

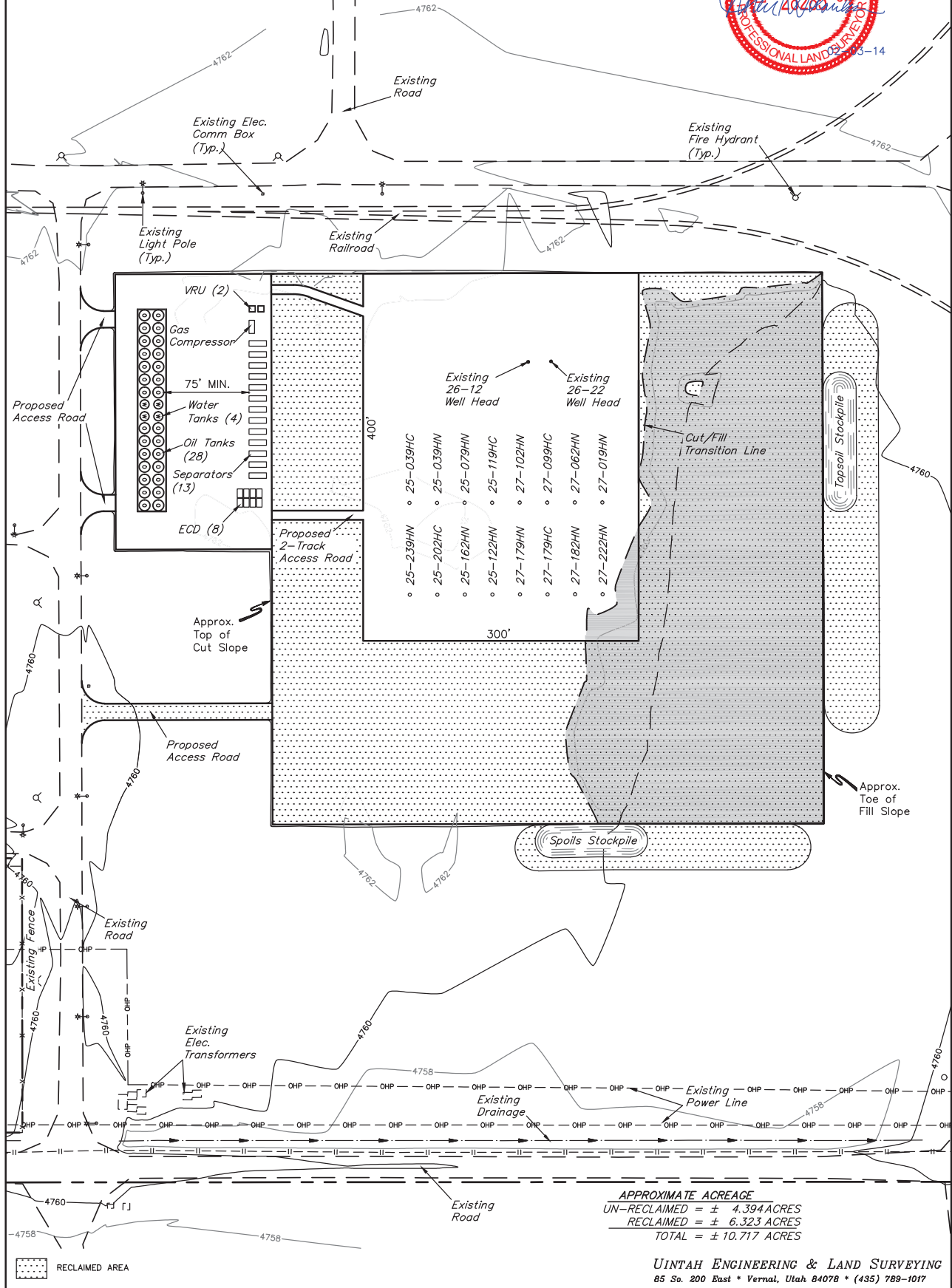
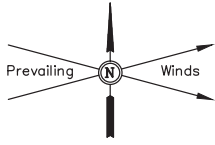
GREAT WESTERN OIL & GAS COMPANY

PRODUCTION FACILITY LAYOUT FOR

KODAK NORTH FD 25-039HC, 25-039HN, 25-079HN, 25-119HC,
 27-102HN, 27-099HC, 27-062HN, 27-019HN, 25-239HN, 25-202HC, 25-162HN,
 25-122HN, 27-179HN, 27-179HC, 27-182HN & 27-222HN
 SECTION 26, T6N, R67W, 6th P.M.
 SE 1/4 NW 1/4

FIGURE #4

SCALE: 1" = 100'
 DATE: 10-31-13
 DRAWN BY: J.W.
 REV: 11-22-13 J.S.
 REV: 01-22-14 H.K.W.
 REV: 01-28-14 H.K.W.
 REV: 02-03-14 H.K.W.



RECLAIMED AREA

APPROXIMATE ACREAGE

UN-RECLAIMED	= ± 4.394 ACRES
RECLAIMED	= ± 6.323 ACRES
TOTAL	= ± 10.717 ACRES

UINTAH ENGINEERING & LAND SURVEYING
 85 So. 200 East • Vernal, Utah 84078 • (435) 789-1017