

T8N, R91W, 6th. P.M.

AXIA ENERGY

Well location, BULLDOG #17-21H-891, located as shown in the NW 1/4 NE 1/4 of Section 17, T8N, R91W, 6th. P.M., Moffat County, Colorado.

BASIS OF ELEVATION

SPOT ELEVATION LOCATED AT THE SOUTHWEST CORNER OF SECTION 15, T7N, R91W, 6th P.M. TAKEN FROM THE CRAIG QUADRANGLE, COLORADO, MOFFAT COUNTY, 7.5 MINUTE QUAD (TOPOGRAPHIC MAP) PUBLISHED BY THE UNITED STATES DEPARTMENT OF THE INTERIOR, GEOLOGICAL SURVEY. SAID ELEVATION IS MARKED AS BEING 6672 FEET.

BASIS OF BEARINGS

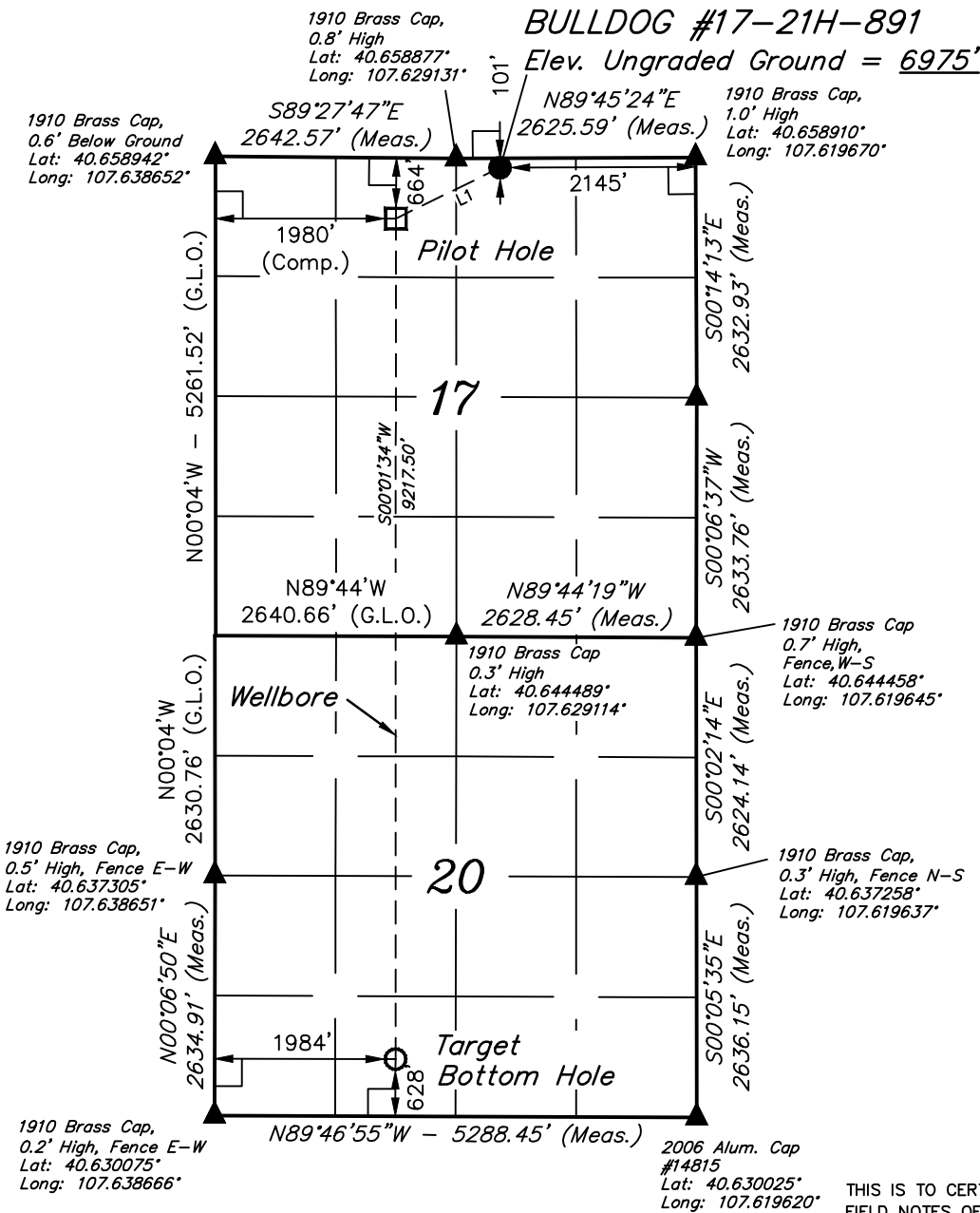
BASIS OF BEARINGS IS A G.P.S. OBSERVATION.

NOTE:
THE PROPOSED PILOT HOLE BEARS
S63°56'33"W 1272.55' FROM THE PROPOSED
WELL HEAD WHICH IS LOCATED IN THE NW
1/4 NE 1/4 OF SECTION 17, T8N, R91W,
6th. P.M. AT 101' FNL 2145' FEL.

NOTE:
THE PROPOSED TARGET BOTTOM HOLE FOR
THIS WELL IS LOCATED IN THE SE 1/4 SW
1/4 OF SECTION 20, T8N, R91W, 6th. P.M. AT
628' FSL 1984' FWL. IT BEARS S00°01'34"W
9217.50' FROM THE PROPOSED PILOT HOLE.

LINE TABLE		
LINE	DIRECTION	LENGTH
L1	S63°56'33"W	1272.55'

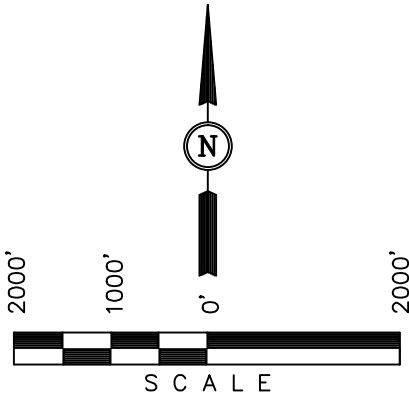
PDOP = 1.1



NAD 83 (SURFACE LOCATION)	
LATITUDE	= 40°39'30.98" (40.658607)
LONGITUDE	= 107°37'38.63" (107.627397)
NAD 27 (SURFACE LOCATION)	
LATITUDE	= 40°39'31.09" (40.657397)
LONGITUDE	= 107°37'38.63" (107.626773)
STATE PLANE NAD 83	
N	: 1489852.83 E: 2409814.83
STATE PLANE NAD 27	
N	: 489851.41 E: 1409972.49

NAD 83 (PILOT HOLE)	
LATITUDE	= 40°39'25.46" (40.657072)
LONGITUDE	= 107°37'53.45" (107.631514)
NAD 27 (PILOT HOLE)	
LATITUDE	= 40°39'25.57" (40.657103)
LONGITUDE	= 107°37'51.21" (107.630892)
STATE PLANE NAD 83	
N	: 1489321.24 E: 2408659.09
STATE PLANE NAD 27	
N	: 489319.82 E: 1408816.77

NAD 83 (TARGET BOTTOM HOLE)	
LATITUDE	= 40°37'54.41" (40.631781)
LONGITUDE	= 107°37'53.47" (107.631519)
NAD 27 (TARGET BOTTOM HOLE)	
LATITUDE	= 40°37'54.52" (40.631811)
LONGITUDE	= 107°37'51.22" (107.630894)
STATE PLANE NAD 83	
N	: 1480109.51 E: 2408436.64
STATE PLANE NAD 27	
N	: 480108.15 E: 1408594.34



CERTIFICATE

THIS IS TO CERTIFY THAT THE ABOVE PLAT WAS PREPARED FROM FIELD NOTES OF ACTUAL SURVEYS MADE BY ME OR UNDER MY SUPERVISION AND THAT THE SAME ARE TRUE AND CORRECT TO THE BEST OF MY KNOWLEDGE AND BELIEF.

REGISTERED LAND SURVEYOR
REGISTRATION NO. 17492
STATE OF COLORADO

REVISED: 01-21-14 T.B.
REVISED: 09-23-13 M.D.

UINTAH ENGINEERING & LAND SURVEYING
85 SOUTH 200 EAST - VERNAL, UTAH 84078
(435) 789-1017

SCALE 1" = 2000'	DATE SURVEYED: 01-11-13	DATE DRAWN: 01-11-13
PARTY G.M. M.A. J.G.G.	REFERENCES G.L.O. PLAT	
WEATHER COLD	FILE AXIA ENERGY	

LEGEND:

- └─┘ = 90° SYMBOL
● = PROPOSED WELL HEAD.
▲ = SECTION CORNERS LOCATED.