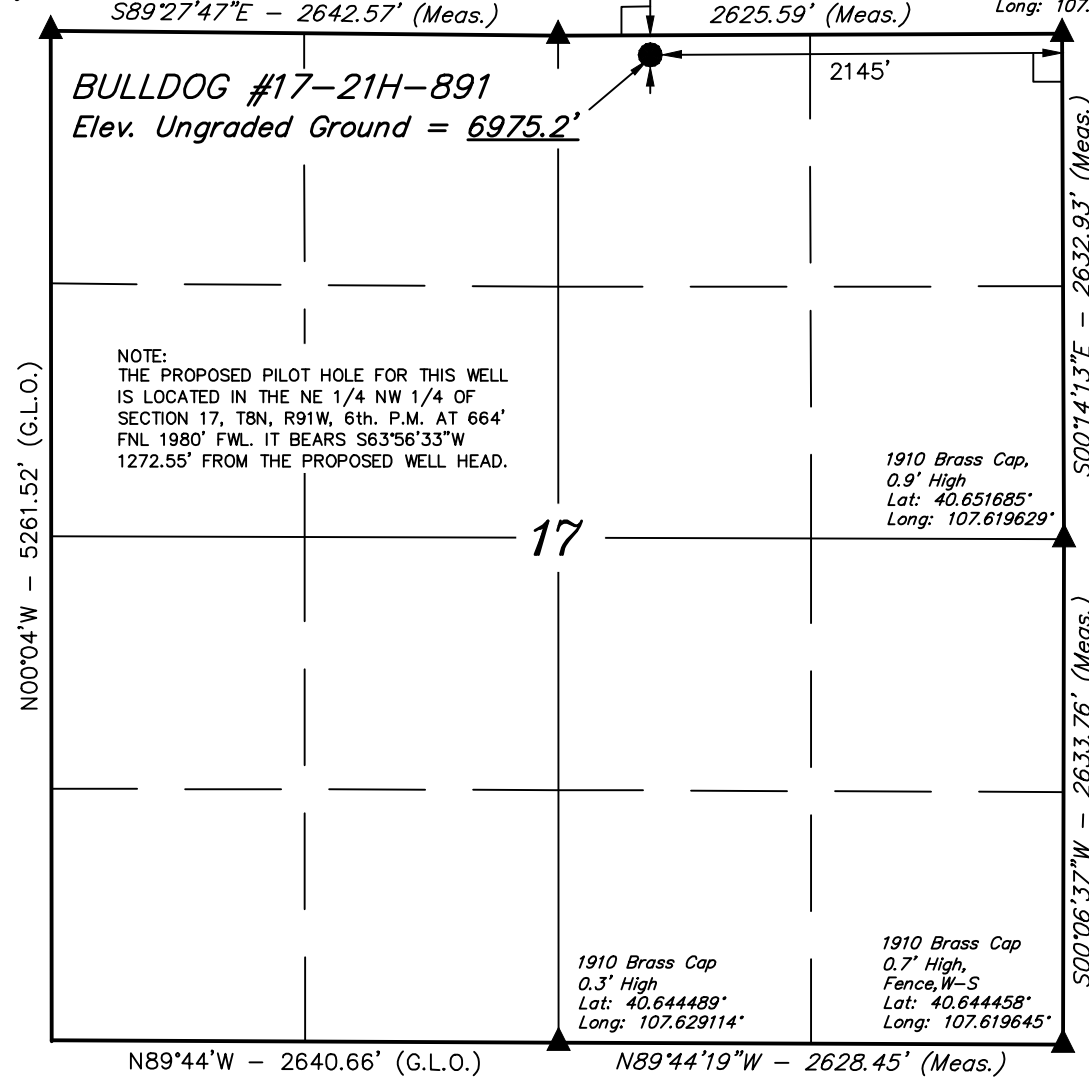


T8N, R91W, 6th. P.M.

1910 Brass Cap,
0.6' Below Ground
Lat: 40.658942°
Long: 107.638652°

1910 Brass Cap,
0.8' High
Lat: 40.658877°
Long: 107.629131°

1910 Brass Cap,
1.0' High
Lat: 40.658910°
Long: 107.619670°



NOTE:
THE PROPOSED PILOT HOLE FOR THIS WELL
IS LOCATED IN THE NE 1/4 NW 1/4 OF
SECTION 17, T8N, R91W, 6th. P.M. AT 664'
FNL 1980' FWL. IT BEARS S63°56'33\"W
1272.55' FROM THE PROPOSED WELL HEAD.

LEGEND:

- └─┘ = 90° SYMBOL
- = PROPOSED WELL HEAD.
- ▲ = SECTION CORNERS LOCATED.

PDOP = 1.1	
NAD 83 (SURFACE LOCATION)	
LATITUDE = 40°39'30.98" (40.658607)	
LONGITUDE = 107°37'38.63" (107.627397)	
NAD 27 (SURFACE LOCATION)	
LATITUDE = 40°39'31.09" (40.657397)	
LONGITUDE = 107°37'38.63" (107.626773)	
STATE PLANE NAD 83	
N: 1489852.83 E: 2409814.83	
STATE PLANE NAD 27	
N: 489851.41 E: 1409972.49	

AXIA ENERGY

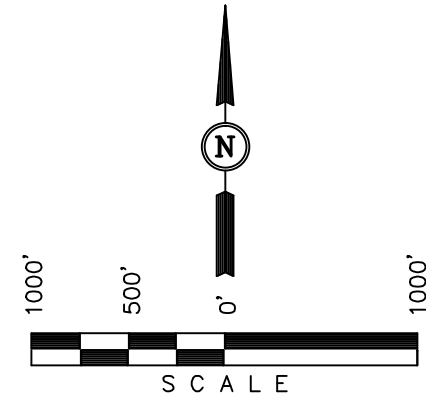
Well location, BULLDOG #17-21H-891(Surface Location), located as shown in the NW 1/4 NE 1/4 of Section 17, T8N, R91W, 6th. P.M., Moffat County, Colorado.

BASIS OF ELEVATION

SPOT ELEVATION LOCATED AT THE SOUTHWEST CORNER OF SECTION 15, T7N, R91W, 6th P.M. TAKEN FROM THE CRAIG QUADRANGLE, COLORADO, MOFFAT COUNTY, 7.5 MINUTE QUAD (TOPOGRAPHIC MAP) PUBLISHED BY THE UNITED STATES DEPARTMENT OF THE INTERIOR, GEOLOGICAL SURVEY. SAID ELEVATION IS MARKED AS BEING 6672 FEET.

BASIS OF BEARINGS

BASIS OF BEARINGS IS A G.P.S. OBSERVATION.



CERTIFICATE

THIS IS TO CERTIFY THAT THE ABOVE PLAT WAS PREPARED FROM FIELD NOTES OF ACTUAL SURVEYS MADE BY ME OR UNDER MY SUPERVISION AND THAT THE SAME ARE TRUE AND CORRECT TO THE BEST OF MY KNOWLEDGE AND BELIEF.

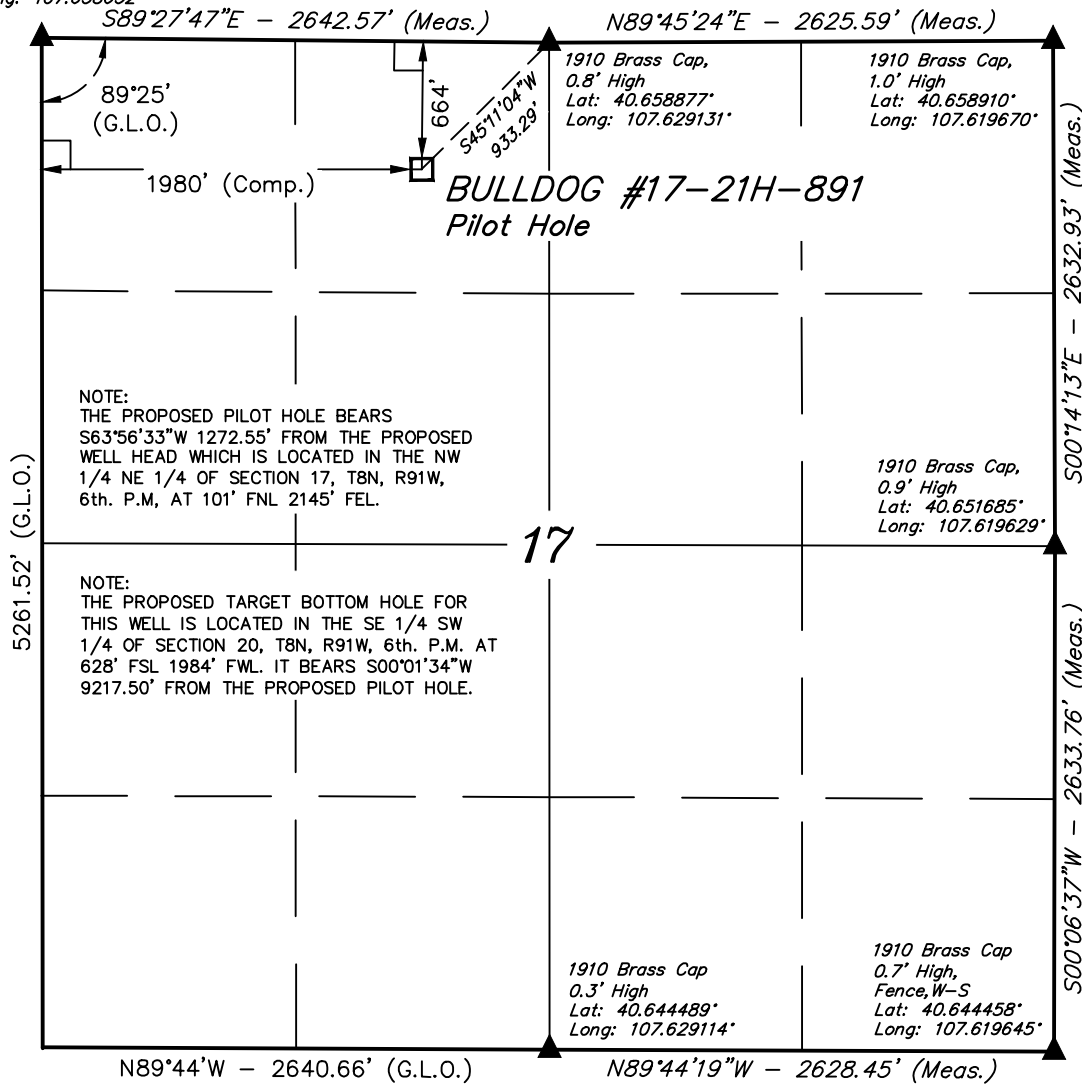
REGISTERED LAND SURVEYOR
REGISTRATION NO. 17492
STATE OF COLORADO

REVISED: 09-23-13 M.D.

UINTAH ENGINEERING & LAND SURVEYING			
85 SOUTH 200 EAST - VERNAL, UTAH 84078			
(435) 789-1017			
SCALE 1" = 1000'		DATE SURVEYED: 01-11-13	DATE DRAWN: 01-11-13
PARTY G.M. M.A. J.G.G.		REFERENCES G.L.O. PLAT	
WEATHER COLD		FILE AXIA ENERGY	

T8N, R91W, 6th. P.M.

1910 Brass Cap,
0.6' Below Ground
Lat: 40.658942°
Long: 107.638652°



LEGEND:

- = 90° SYMBOL
- = PROPOSED WELL HEAD.
- = SECTION CORNERS LOCATED.

NAD 83 (PILOT HOLE)	
LATITUDE	= 40°39'25.46" (40.657072)
LONGITUDE	= 107°37'53.45" (107.631514)
NAD 27 (PILOT HOLE)	
LATITUDE	= 40°39'25.57" (40.657103)
LONGITUDE	= 107°37'51.21" (107.630892)
STATE PLANE NAD 83	
N: 1489321.24	E: 2408659.09
STATE PLANE NAD 27	
N: 489319.82	E: 1408816.77

AXIA ENERGY

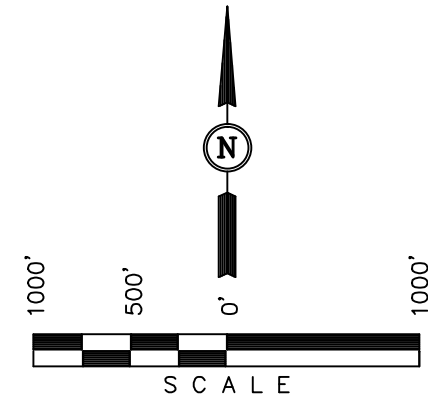
Well location, BULLDOG #17-21H-891 (Pilot Hole), located as shown in the NE 1/4 NW 1/4 of Section 17, T8N, R91W, 6th. P.M., Moffat County, Colorado.

BASIS OF ELEVATION

SPOT ELEVATION LOCATED AT THE SOUTHWEST CORNER OF SECTION 15, T7N, R91W, 6th P.M. TAKEN FROM THE CRAIG QUADRANGLE, COLORADO, MOFFAT COUNTY, 7.5 MINUTE QUAD (TOPOGRAPHIC MAP) PUBLISHED BY THE UNITED STATES DEPARTMENT OF THE INTERIOR, GEOLOGICAL SURVEY. SAID ELEVATION IS MARKED AS BEING 6672 FEET.

BASIS OF BEARINGS

BASIS OF BEARINGS IS A G.P.S. OBSERVATION.



CERTIFICATE

THIS IS TO CERTIFY THAT THE ABOVE PLAT WAS PREPARED FROM FIELD NOTES OF ACTUAL SURVEYS MADE BY ME OR UNDER MY SUPERVISION AND THAT THE SAME ARE TRUE AND CORRECT TO THE BEST OF MY KNOWLEDGE AND BELIEF.

REGISTERED LAND SURVEYOR
REGISTRATION NO. 17492
STATE OF COLORADO

REVISED: 09-23-13 M.D.

UINTAH ENGINEERING & LAND SURVEYING
85 SOUTH 200 EAST - VERNAL, UTAH 84078
(435) 789-1017

SCALE 1" = 1000'	DATE SURVEYED: 01-11-13	DATE DRAWN: 01-11-13
PARTY G.M. M.A. J.G.G.	REFERENCES G.L.O. PLAT	
WEATHER COLD	FILE	AXIA ENERGY