

R. 97 W.



GRID NORTH

SCALE 1" = 1000'
500' 0 1000'

T. 6 S.

SHL
LATITUDE (NAD 83)
 NORTH 39.531109 DEG.
LONGITUDE (NAD 83)
 WEST 108.223167 DEG.
NORTHING (NAD 27)
 629836.85
EASTING (NAD 27)
 1232179.76

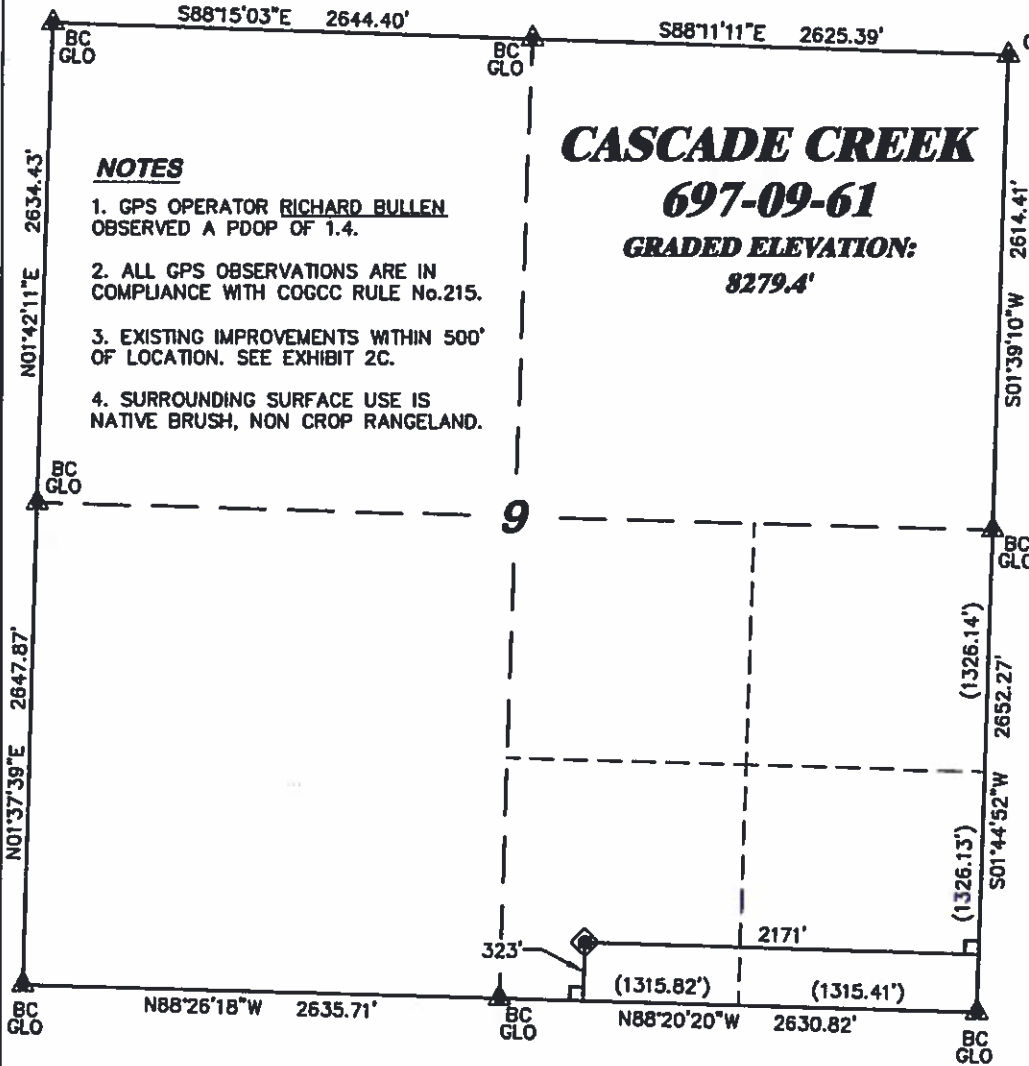
BASIS OF BEARING/DATUM

SPCS CO CENTRAL NAD 27
 BASED ON GPS OBSERVATIONS
 AND OPUS SOLUTION ON DRG
 CONTROL POINT "WILLIAMS"
 HAVING A POSITION OF:
 NAD83(2011)
 LAT 39° 31' 35.18" NORTH
 LONG 108° 12' 16.79" WEST
 NAVD88 ELEVATION: 8618.08'

THE SOUTH LINE OF THE SE¼
 OF SECTION 9, MONUMENTED BY
 GLO BC'S AND BEARING
 N 88°20'20" W.

LEGEND

- ◆ WELL LOCATION
- L DENOTES 90° TIE
- ▲ PREVIOUSLY FOUND MONUMENT



NOTES

1. GPS OPERATOR RICHARD BULLEN OBSERVED A PDOP OF 1.4.
2. ALL GPS OBSERVATIONS ARE IN COMPLIANCE WITH COGCC RULE No.215.
3. EXISTING IMPROVEMENTS WITHIN 500' OF LOCATION. SEE EXHIBIT 2C.
4. SURROUNDING SURFACE USE IS NATIVE BRUSH, NON CROP RANGELAND.

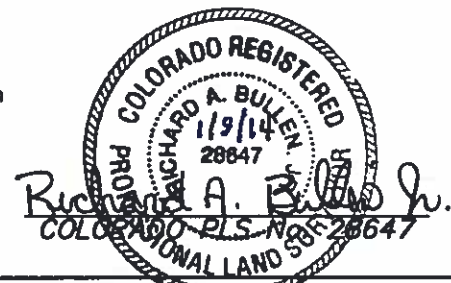
9

SURVEYOR'S STATEMENT

I, RICHARD A. BULLEN JR., AN EMPLOYEE AND AGENT ON BEHALF OF D.R. GRIFFIN & ASSOCIATES, INC. STATE THE PLAT HEREON IS A CORRECT REPRESENTATION OF A SURVEY MADE UNDER MY SUPERVISION ON THE 18th DAY OF DECEMBER, 2013 OF THE SHOWN CC 697-09-61 AND THAT THE LOCATION HAS BEEN STAKED ON THE GROUND.

Notice: In accordance with Colorado State Law, any legal action based upon any defect in this survey plat must commence within three (3) years after first discovery of such defect. In no event, may any action based upon any defect in this survey plat be commenced more than ten (10) years from the date of certification shown hereon.

CC 697-09-61 PAD



DRG GRIFFIN & ASSOCIATES, INC.
 (307) 362-6026 1414 ELK ST., ROCK SPRINGS, WY 82801

**PLAT OF DRILLING LOCATION IN
 SWSE, SECTION 9, FOR
 OXY USA WTP LP**

**323' F/SL, & 2171' F/EL, SECTION 9,
 T. 6 S., R. 97 W., 6TH P.M.,
 GARFIELD COUNTY, COLORADO**

DRAWN: 9/20/2013 - TCM

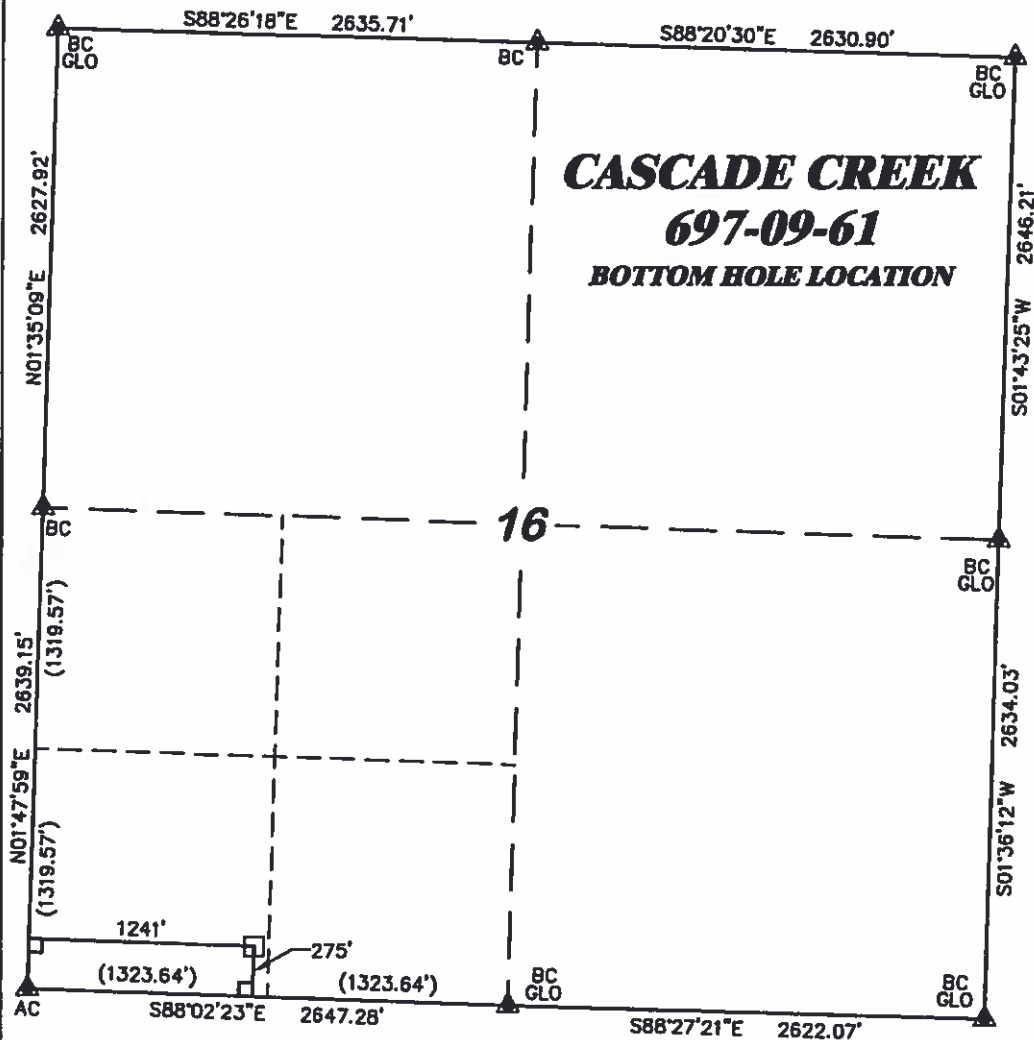
SCALE: 1" = 1000'

REVISED: . . .

DRG JOB No. 20160

EXHIBIT 1

R. 97 W.



GRID NORTH
SCALE 1" = 1000'
500' 0 1000'

T. 6 S.

BH

LATITUDE (NAD 83)
NORTH 39.516503 DEG.
LONGITUDE (NAD 83)
WEST 108.229091 DEG.
NORTHING (NAD 27)
624566
EASTING (NAD 27)
1230169

BASIS OF BEARING/DATUM

SPCS CO CENTRAL NAD 27
BASED ON GPS OBSERVATIONS
AND OPUS SOLUTION ON DRG
CONTROL POINT "WILLIAMS"
HAVING A POSITION OF:
NAD83(2011)
LAT 39° 31' 35.18" NORTH
LONG 108° 12' 16.79" WEST
NAVD88 ELEVATION: 8618.08'

THE SOUTH LINE OF THE SW $\frac{1}{4}$
OF SECTION 16, MONUMENTED
BY GLO BC AND AN ALUMINUM
CAP AND BEARING
S 88°02'23" E.

LEGEND

- APPROX. BHL
- DENOTES 90° TIE
- PREVIOUSLY FOUND MONUMENT

SURVEYOR'S STATEMENT

I, RICHARD A. BULLEN JR., AN EMPLOYEE AND AGENT ON BEHALF OF D.R. GRIFFIN & ASSOCIATES, INC. STATE THE PLAT HEREON IS A CORRECT REPRESENTATION OF A SURVEY MADE UNDER MY SUPERVISION ON THE 18th DAY OF DECEMBER, 2013 OF THE SHOWN CC 697-09-61 BOTTOM HOLE LOCATION.

Notice: In accordance with Colorado State Law, any legal action based upon any defect in this survey plat must commence within three (3) years after first discovery of such defect. In no event, may any action based upon any defect in this survey plat be commenced more than ten (10) years from the date of certification shown hereon.

CC 697-09-61 PAD



**PLAT OF BOTTOM HOLE LOCATION IN
SWSW, SECTION 16, FOR
OXY USA WTP LP**

DRG RIFFIN & ASSOCIATES, INC.
(307) 362-8028 1414 ELK ST., ROCK SPRINGS, WY 82901

DRAWN: 9/20/2013 - TCM	SCALE: 1" = 1000'
REVISED: 1/10/2014 - TCM	DRG JOB No. 20160
MISC. REVISIONS	EXHIBIT 1

**275' F/SL, & 1241' F/WL, SECTION 16,
T. 6 S., R. 97 W., 6TH P.M.,
GARFIELD COUNTY, COLORADO**