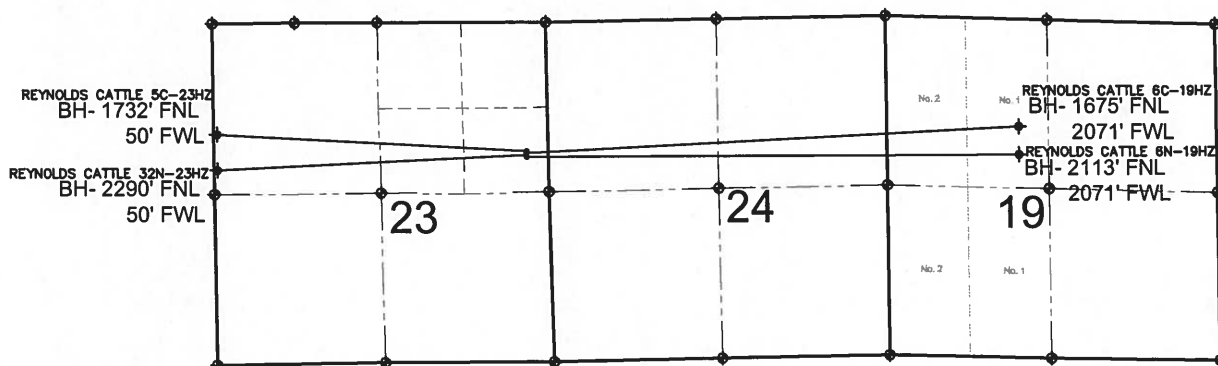


REYNOLDS CATTLE 6C-19HZ MULTI-WELL PLAN

SECTION 23, TOWNSHIP 3 NORTH, RANGE 68 WEST, 6TH P.M.



NOTES:

REYNOLDS CATTLE 5C-23HZ TO BE AT 2011' FNL, 339' FEL.
BOTTOM HOLE AT 1732' FNL & 50' FWL.
REYNOLDS CATTLE 6C-19HZ TO BE AT 2041' FNL, 339' FEL.
BOTTOM HOLE AT 1675' FNL & 2071' FWL, SEC. 19, 3N, 67W.
REYNOLDS CATTLE 32N-23HZ TO BE AT 2071' FNL, 339' FEL.
BOTTOM HOLE AT 2290' FNL & 50' FWL.
REYNOLDS CATTLE 6N-19HZ TO BE AT 2101' FNL, 338' FEL.
BOTTOM HOLE AT 2113' FNL & 2071' FWL, SEC. 19, 3N, 67W.

LEGEND

= EXISTING MONUMENT
 = BOTTOM HOLE
 BH= BOTTOM HOLE
 = PROPOSED WELL
 = EXISTING WELL

PREPARED BY:



KERR-MCGEE OIL & GAS ONSHORE LP

FIELD DATE:
10-09-13

DRAWING DATE:
11-08-13

SURFACE LOCATION:

SE 1/4 NE 1/4, SEC. 23, T3N, R68W, 6TH P.M.
WELD COUNTY, COLORADO

