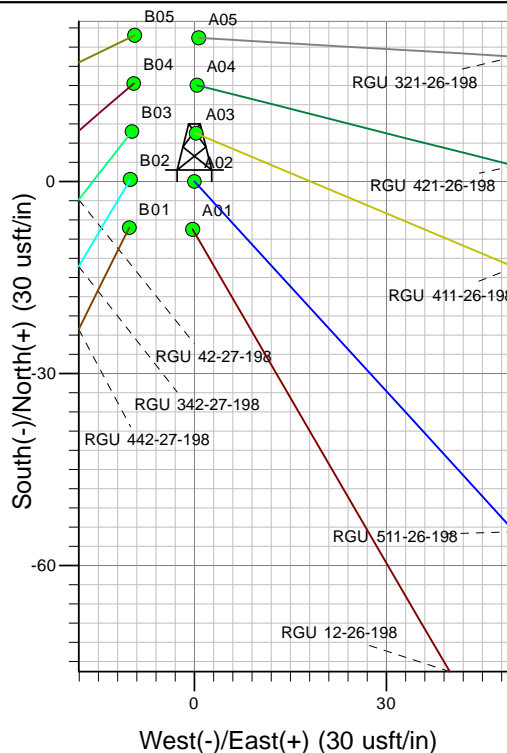
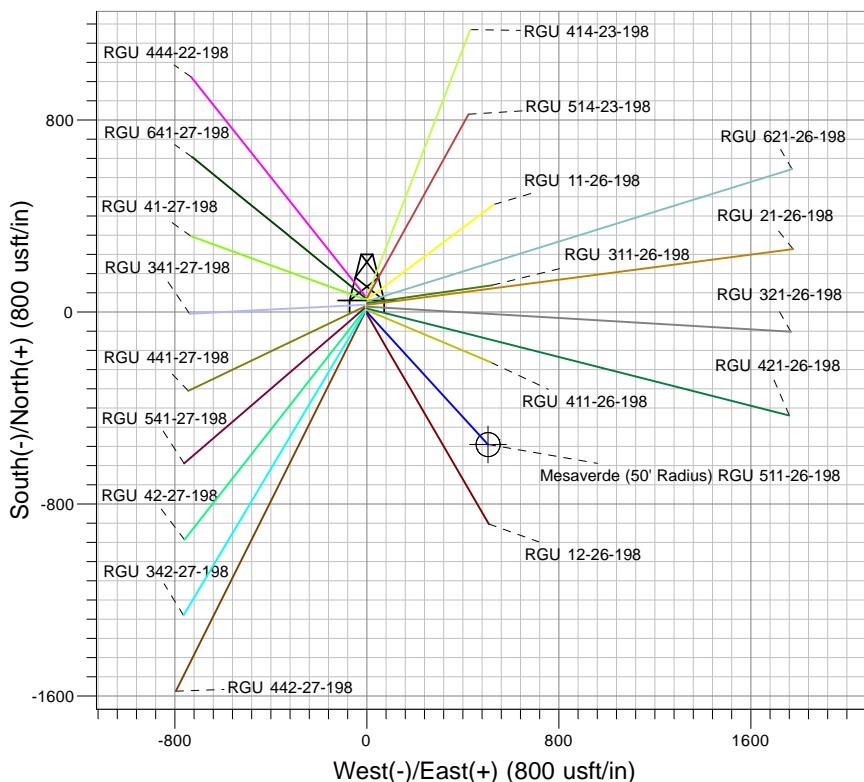
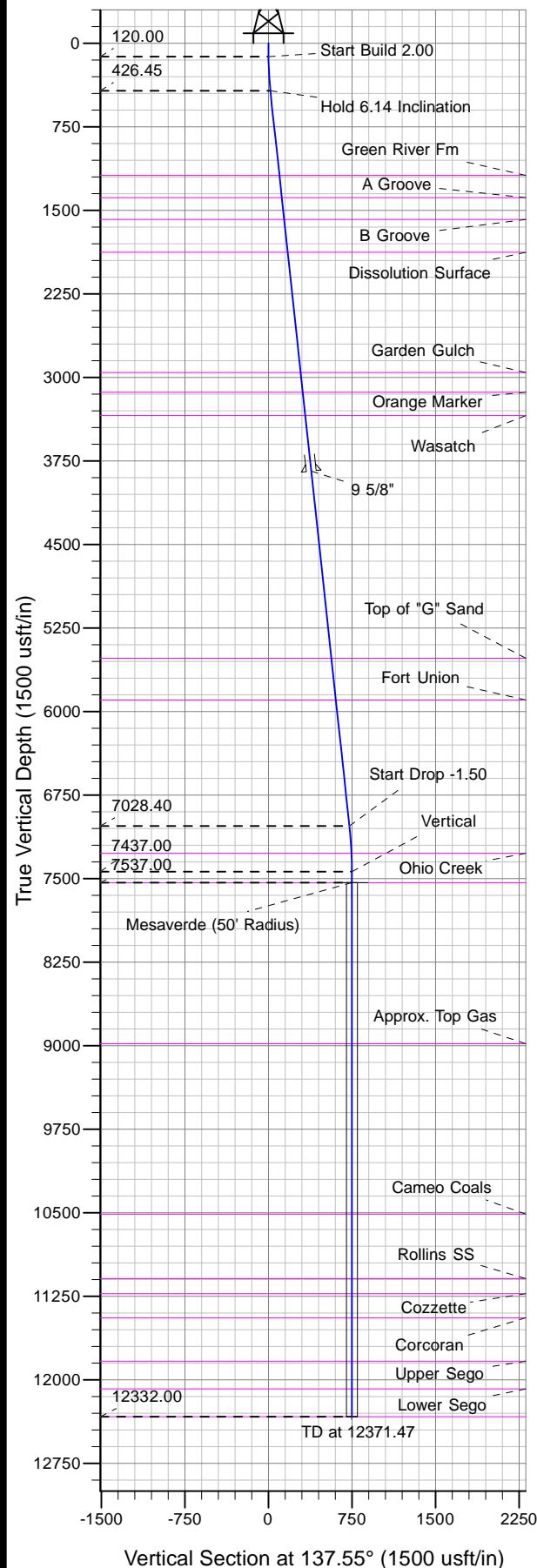




Well Name: RGU 511-26-198
Surface Location: RGU 11-26-198
North American Datum 1983 , US State Plane 1983, Colorado Central Zone
Ground Elevation: 6586.00

+N/-S	+E/-W	Northing	Easting	Latitude	Longitude	Slot
0.00	0.00	1780009.80	2195669.80	39.94008	-108.36878	A02

KELLY BUSHING @ 6607.00usft (Cyclone 29 (21' RKB) kjs)



Project: RG 26-01S-098W
Site: RGU 11-26-198
Well: RGU 511-26-198
Design #2 05Nov13 kjs



Azimuths to True North
Magnetic North: 10.31°
Magnetic Field
Strength: 52229.0snT
Dip Angle: 65.98°
Date: 7/9/2013
Model: IGRF2010

ANNOTATIONS

TVD	MD	Inc	Azi	+N/-S	+E/-W	Vsect	Departure	Annotation
120.00	120.00	0.00	0.00	0.00	0.00	0.00	0.00	Start Build 2.00
426.45	427.04	6.14	137.55	-12.13	11.09	16.44	16.44	Hold 6.14 Inclination
7028.40	7067.09	6.14	137.55	-536.27	490.47	726.74	726.74	Start Drop -1.50
7437.00	7476.47	0.00	0.00	-552.44	505.27	748.65	748.65	Vertical
7537.00	7576.47	0.00	0.00	-552.44	505.27	748.65	748.65	Mesaverde
12332.00	12371.47	0.00	0.00	-552.44	505.27	748.65	748.65	TD at 12371.47