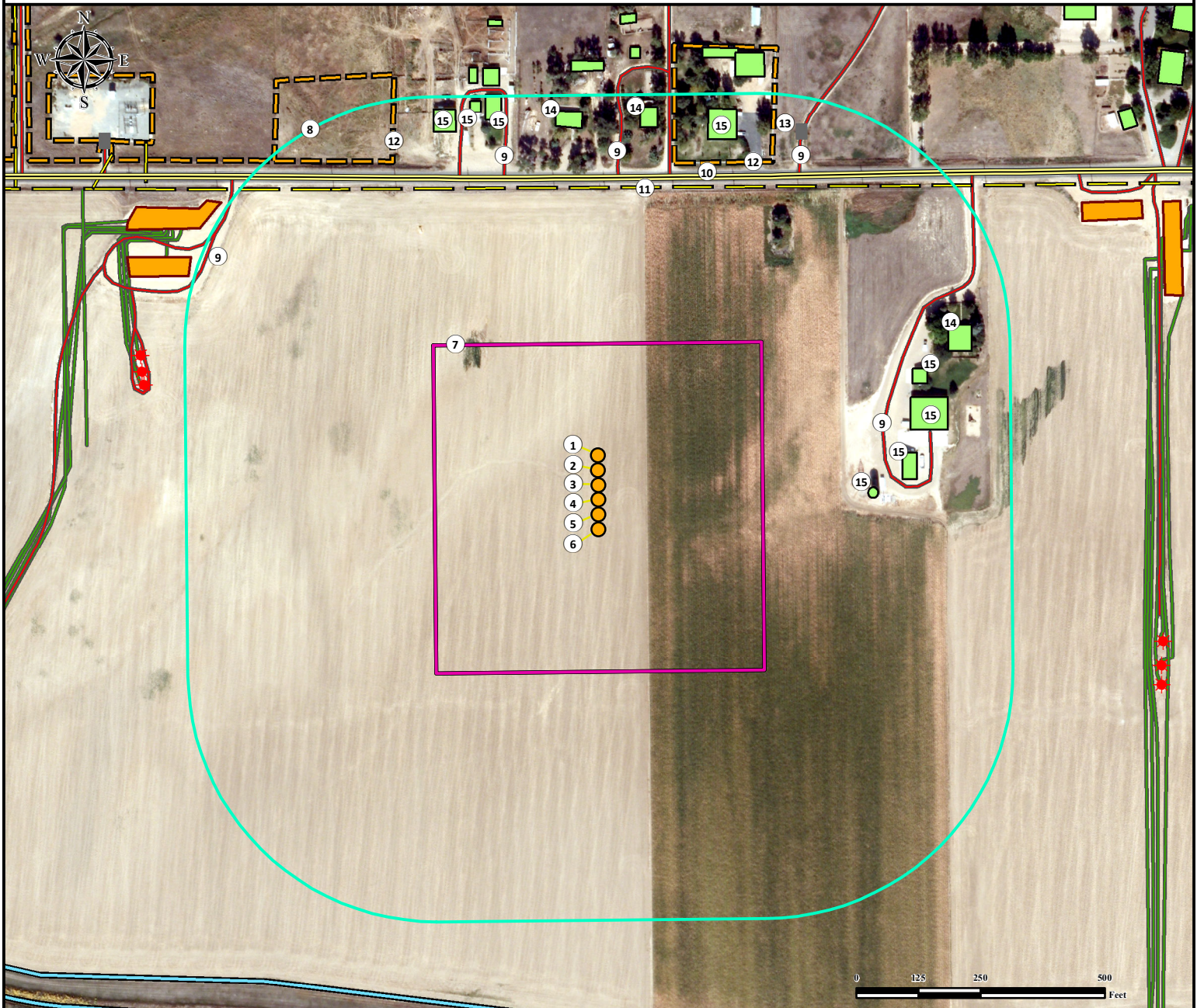


Location Drawing

REYNOLDS CATTLE 31C-23HZ

Horizontal Multi Well Pad

NE¼ NE¼ SECTION 23, TOWNSHIP 3 NORTH, RANGE 68 WEST OF THE 6TH PRINCIPAL MERIDIAN



1. Proposed Well REYNOLDS CATTLE 30N-23HZ.
2. Proposed Well REYNOLDS CATTLE 28N-19HZ.
3. Proposed Well REYNOLDS CATTLE 31C-23HZ.
4. Proposed Well REYNOLDS CATTLE 3C-19HZ.
5. Proposed Well REYNOLDS CATTLE 31N-23HZ.
6. Proposed Well REYNOLDS CATTLE 3N-19HZ.
7. Operational Disturbance Area.

8. 500' Radius.
9. Private Roads are $\pm 577'$ NE, $\pm 621'$ NE, $\pm 636'$ NE, $\pm 647'$ NW, $\pm 741'$ NE, and $\pm 908'$ NW.
10. County Road 32 is $\pm 619'$ N.
11. Powerline is $\pm 599'$ N.
12. Fences are $\pm 666'$ NE and $\pm 771'$ NW.

13. Gate is $\pm 820'$ NE.
14. Building Units are $\pm 719'$ NW, $\pm 724'$ NE, and $\pm 753'$ NE.
15. Buildings are $\pm 541'$ E, $\pm 610'$ E, $\pm 637'$ NE, $\pm 663'$ NE, $\pm 729'$ NE, $\pm 760'$ NW, $\pm 767'$ NW, and $\pm 788'$ NW.

Legend	Proposed Well	500' Radius	Public Road	Pipeline
Existing Well	Facility Enclosure	Private Road	Powerline	
Gate	Building/Building Unit	Ditch		
Disturbance Area	Fence			

Reference Location

** All measurements are made from
Reference Well REYNOLDS CATTLE 31C-23HZ **
Lat: 40.217216° Long: -104.961383° (NAD83)
Elevation: 4932 Feet

Surface Use: Irrigated Crop

Nearest Building Unit: $\pm 719'$ NW

Prepared for:

Anadarko
Petroleum Corporation
KERR-MCGEE OIL & GAS ONSHORE LP



Use our resources to find yours!
www.petro-fs.com
(303) 928-7128

Field Date: 09/23/2013
Drafting Date: 10/31/2013
Drafter: CPO
Revision: 1

Data Sources:

- Aerial courtesy of Anadarko
Petroleum Corporation (2010)