



Scale: 5" / 100'
Measured Depth Log

Well Name Frye Farms #13

Location 1246FSL & 1166FEL, Sec 32

State Colorado

Country U.S.A

API Number #05-123-34960-00

Region DJ Basin

Spud Date 10-30-13 (Curve) / 11-04-13 (Lateral)

Drilling Completed 11-02-13 (Curve) / 11-07-13 (Lateral)

Surface Coordinates Lat: 40.439430

Long: -104.9107

Bottom Hole Coordinates Lat: 40.44288899

Long: -104.8901802

Ground Elevation 4,880'

K.B. Elevation 4,902.5'

Logged Interval 5,000' To 11,903'

Total Depth 11,903'

Formation Sharon Springs- Codell

Type of Drilling Fluid Fresh Water

Company Tekon Windsor LLC

Address 640 PLAZA DRIVE, SUITE
HIGHLANDS RANCH, CO

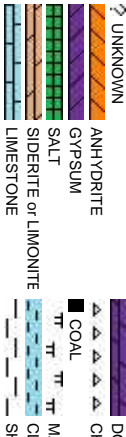
Name Dominic Pitre / Dan Scott

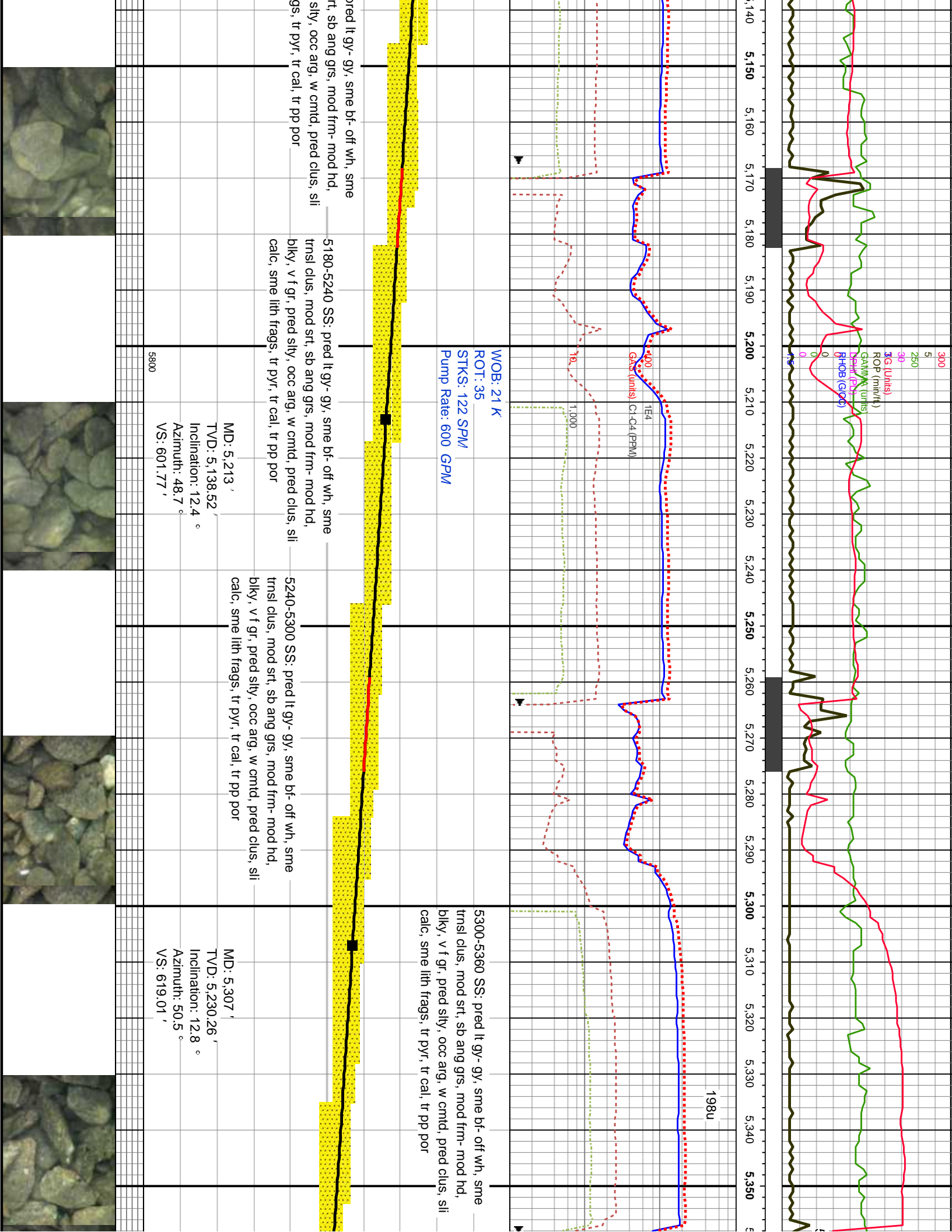
Company Empirica

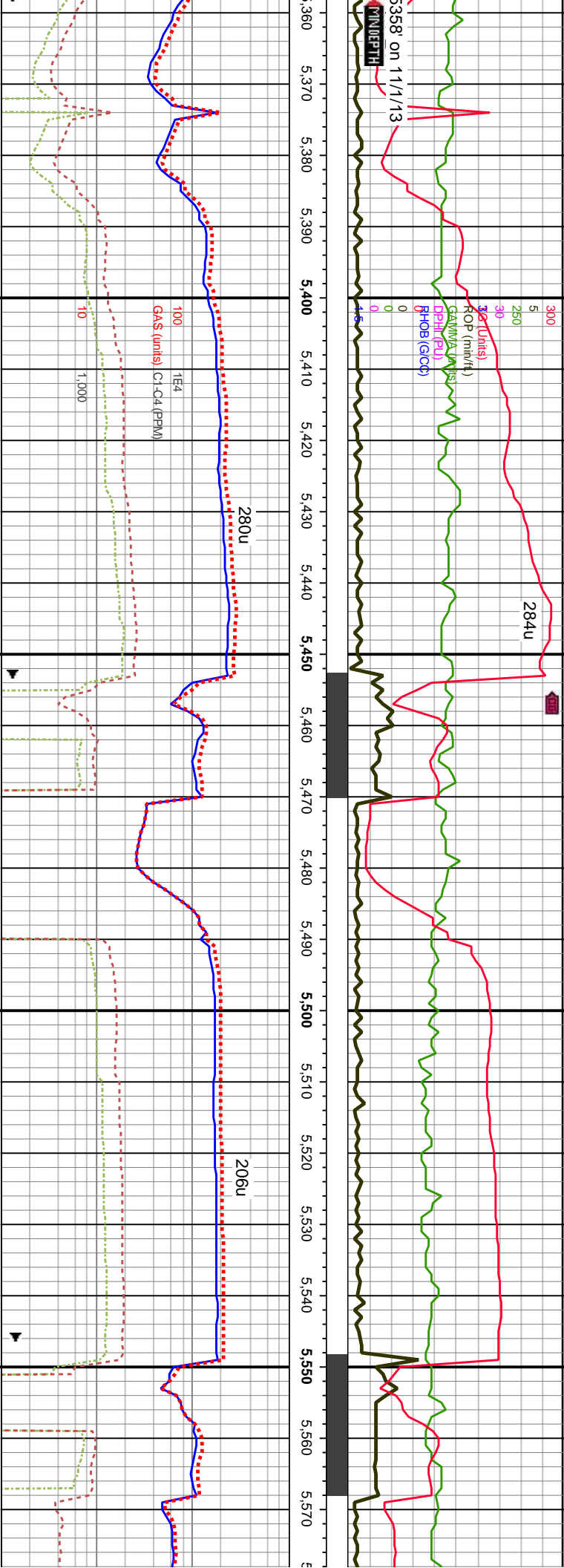
6741 Satsuma Dr.
Houston, TX 77041
(713)-466-7400

Equipment ML-089

Comments 2 Man Logging
Start Date: 10
Standby: 10-0







5360-5420 SS: pred lt gy- gy, sme bf- off wh, sme trns1 clus, mod srt, sb ang grs, mod frm- mod hd, bily, v f gr, pred slty, occ arg, w cmt, pred clus, sil calc, sme lith frags, tr pyr, tr cal, tr pp, por

5420-5480 SS: pred lt gy- gy, sme bf- off wh, sme
trns1 clus, mod srt, sb ang grs, mod frm- mod hd,
biky, v f gr, pred slty, occ arg, w cmtd, pred clus, sli
calc, sme lth frags, tr pyr, tr cal, tr pp por

5480-5540 SS: pred lt gy-gy, sme b- off wh, sme
trns1 clus, mod srt, sb ang grs, mod frm-mod hd,
bily, v f gr, pred slty, occ arg, w cmt, pred clus, sli
calc, sme lth frags, tr pyr, tr cal, tr pp por

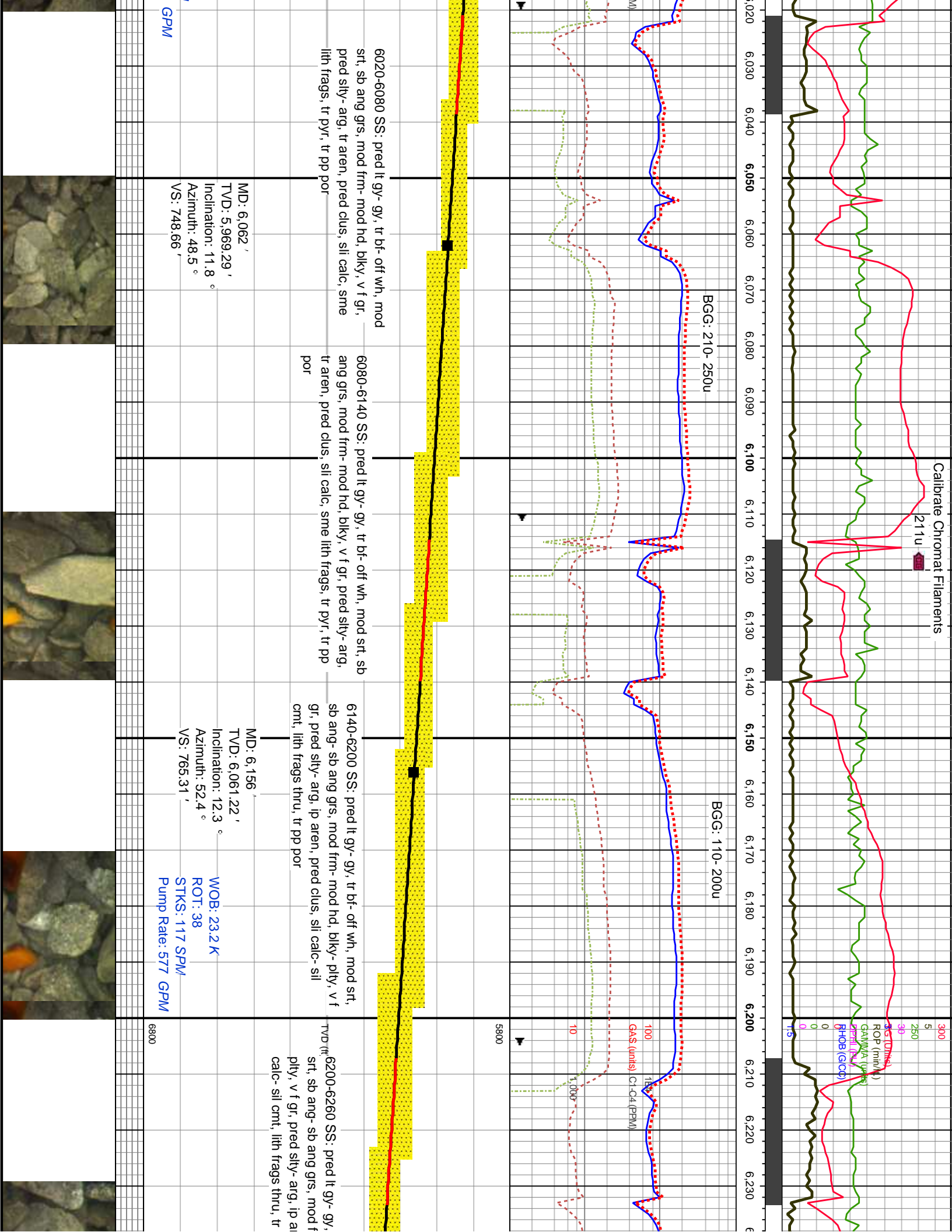
5540-5600 SS: pred lt gy-gy, sme l
trnsi clus, mod srt, sb ang grs, mod
billy, v f gr, pred slty, occ arg, w cm
calc, sme lith frags, tr pyr, tr cal, tr f

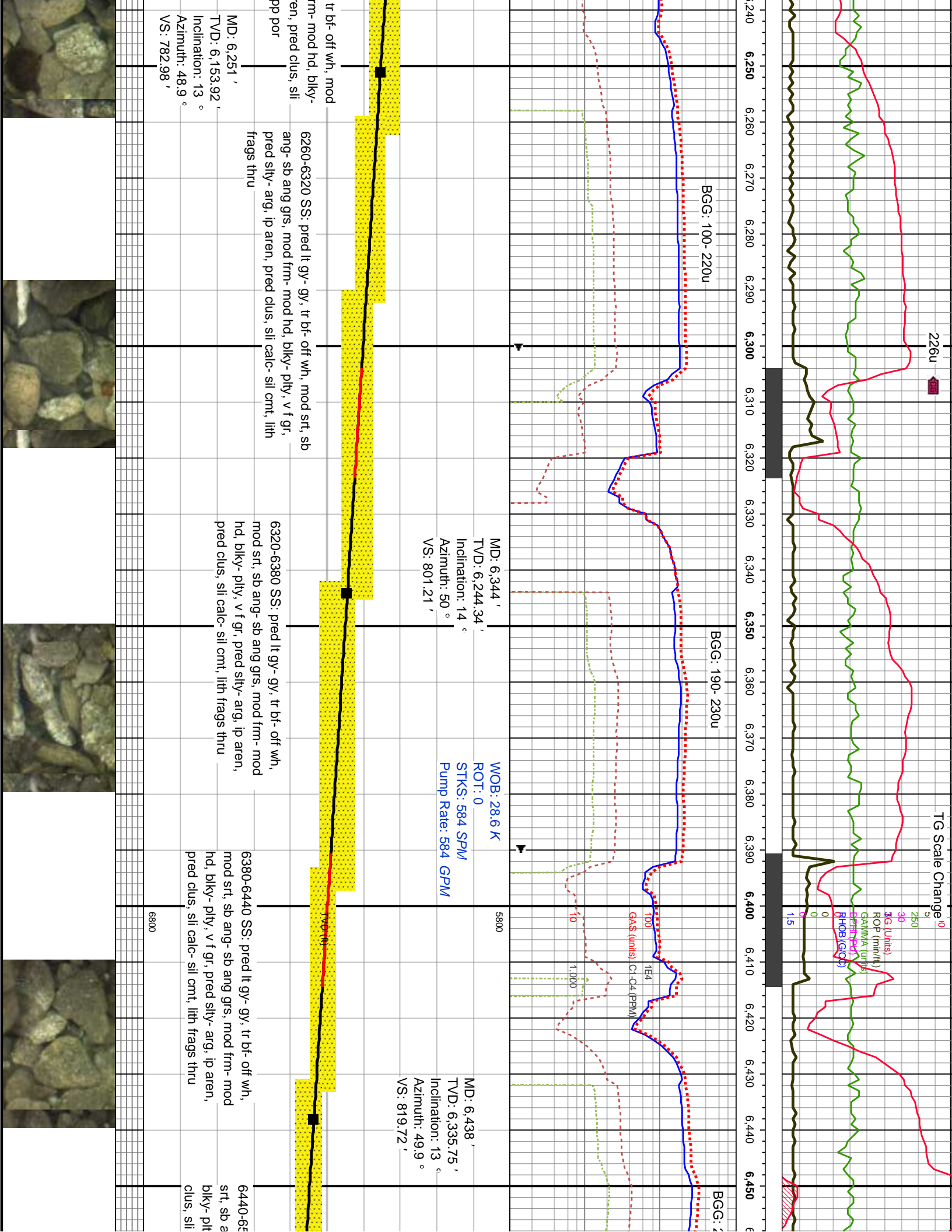
WOB: 16 K
ROT: 35
STKS: 120 SPM
Pump Rate: 589 GPM

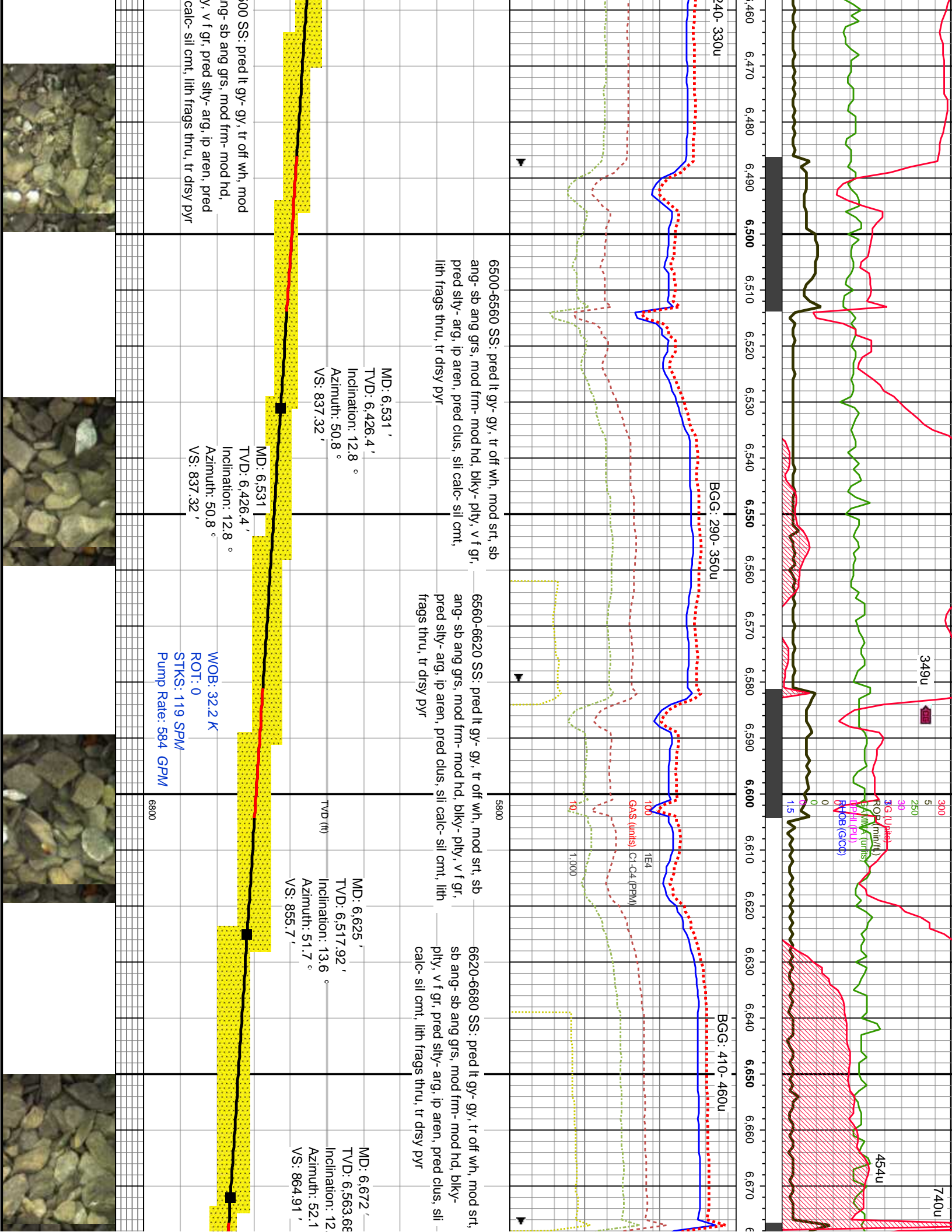
MD: 5,403 "
TVD: 5,324.28 "
Inclination: 10.5 °
Azimuth: 46.3 °
VS: 635.11 '
5800

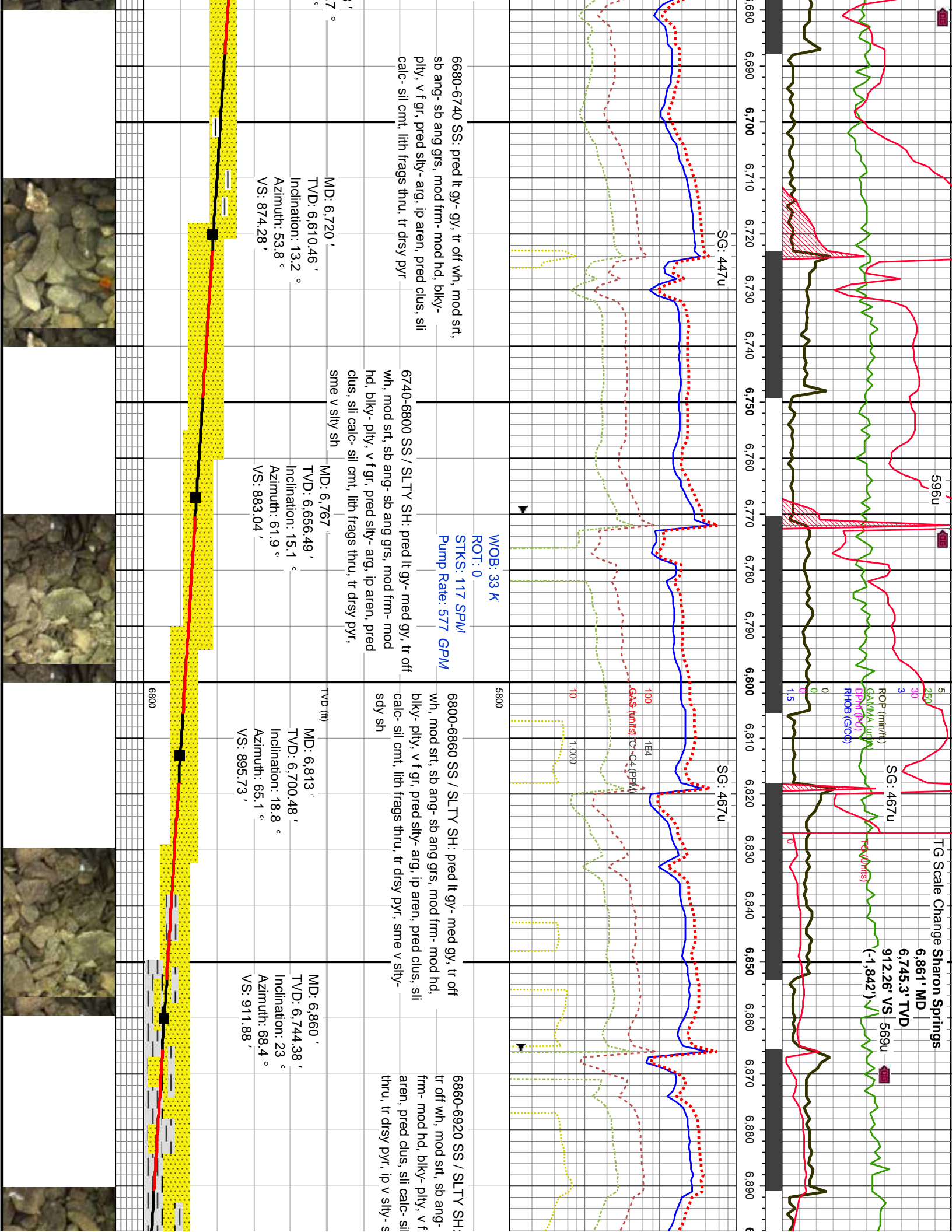
MD: 5,497 '
TV D: 5,416.71 '
Inclination: 10.5 °
Azimuth: 50.5 °
VS: 649.3 '

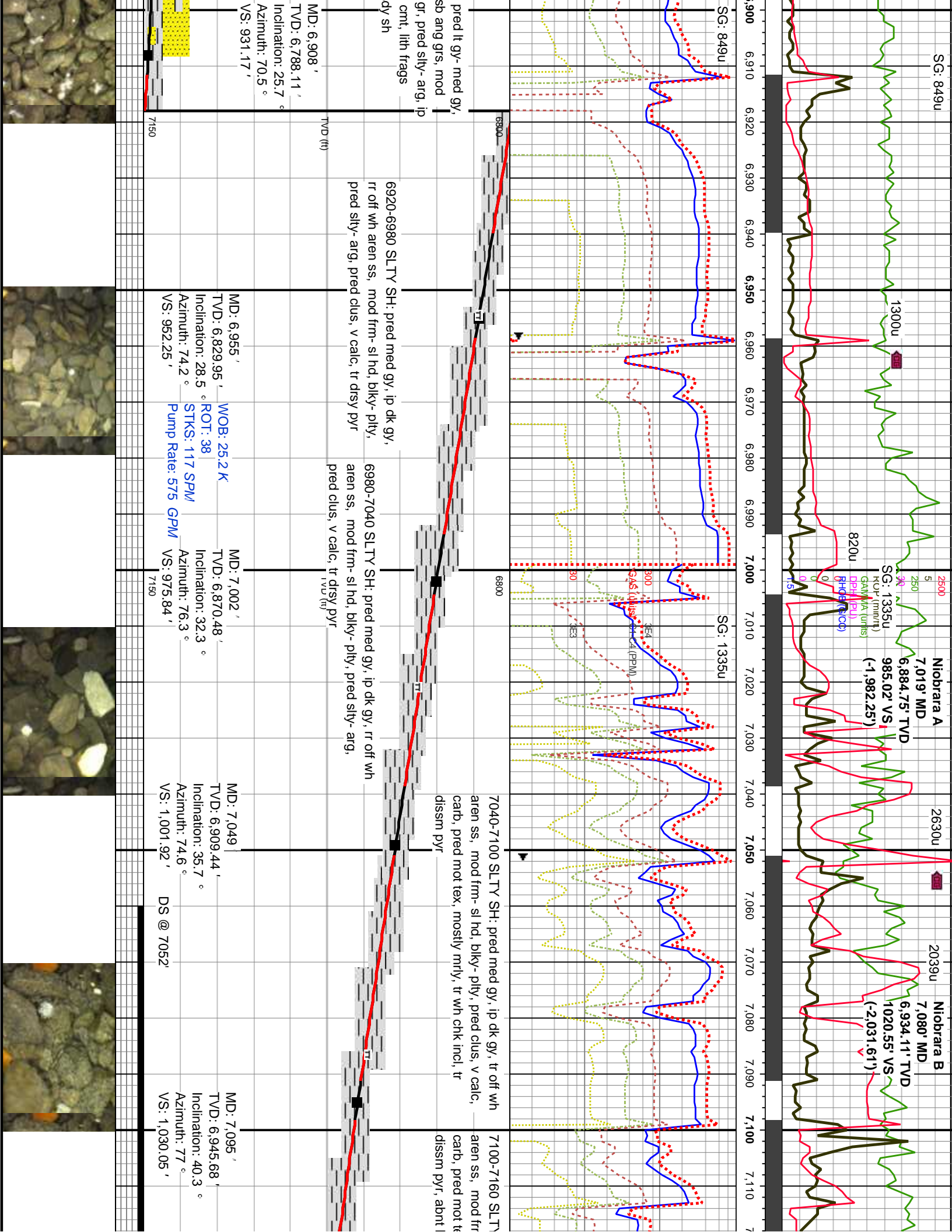


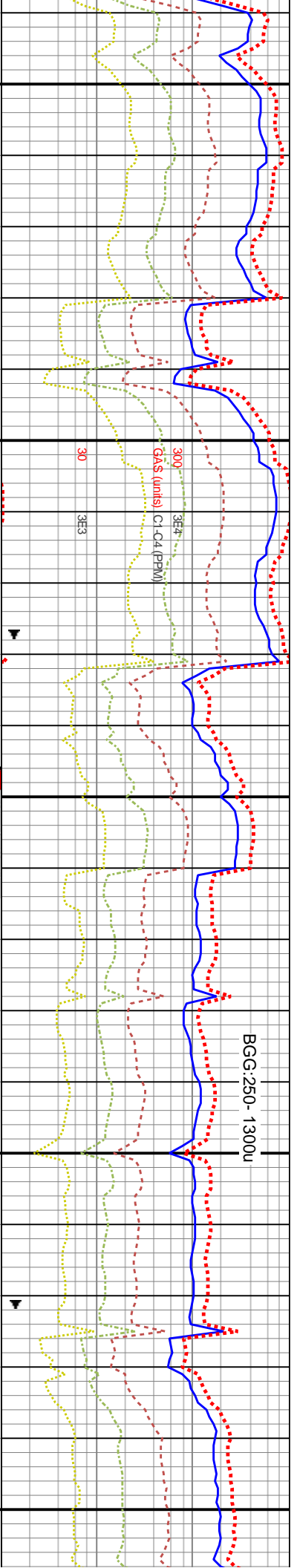
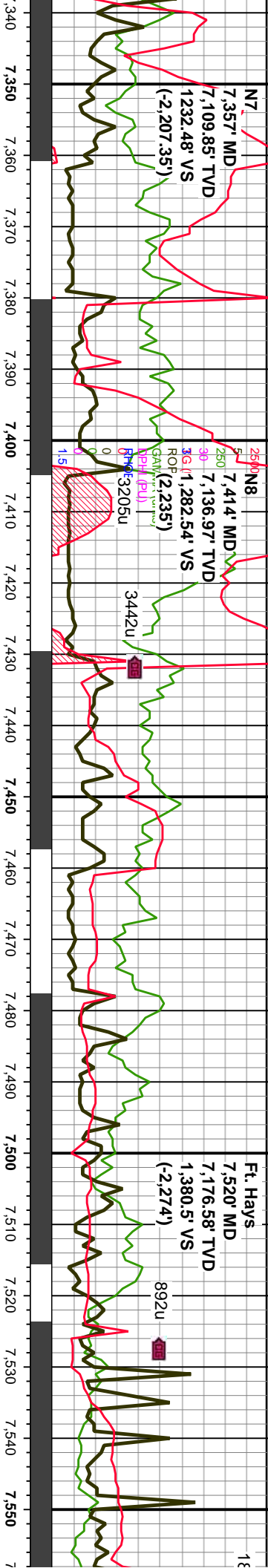












7340-7400 SLTY SH: pred med gy, ip dk gy, mod frm-
sl hd, blk-y- pily, v calc, carb, pred mot tex, ip mry, tr
wh chk incl, tr lt yel flor, no cut

MD: 7,378'
TVD: 7,120.26'
Inclination: 61°
Azimuth: 85.1°
VS: 1,250.7'

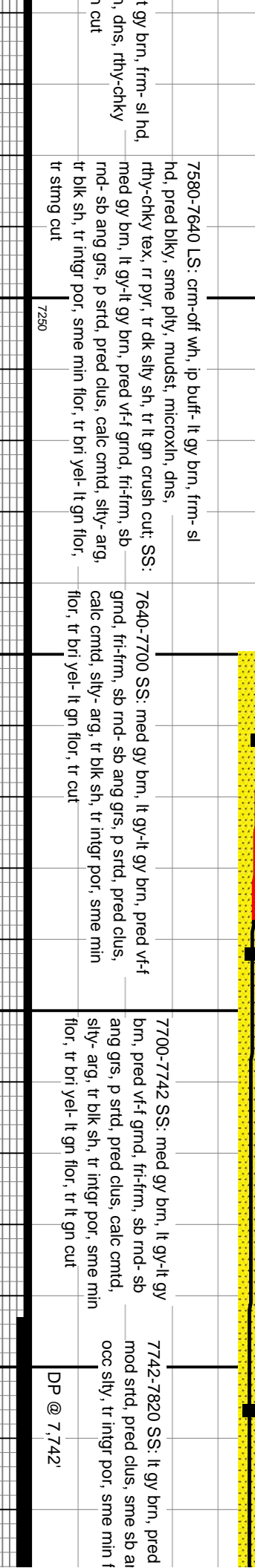
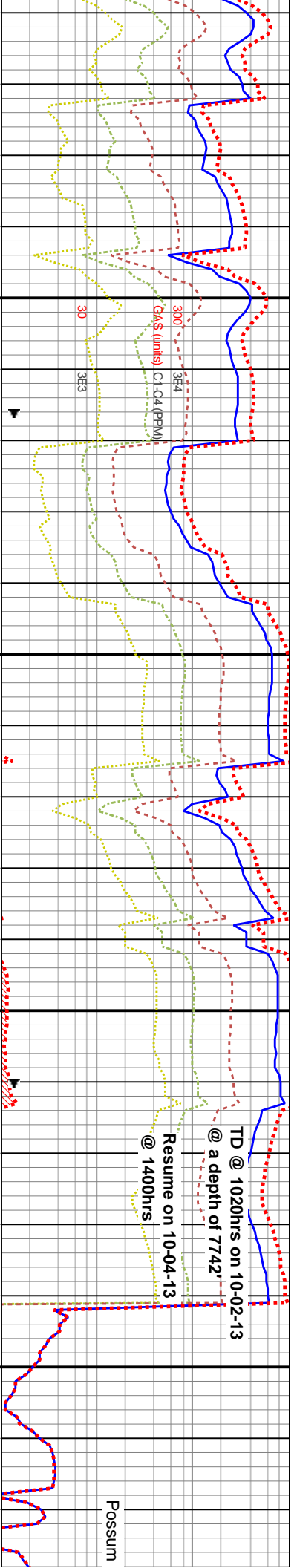
7400-7460 SLTY SH: pred med gy, ip dk gy, mod frm-sl hd, blkly-pty, v calc, carb, pred mot tex, ip mrlly, tr wh chlk incl, tr lt yel flor, no cut

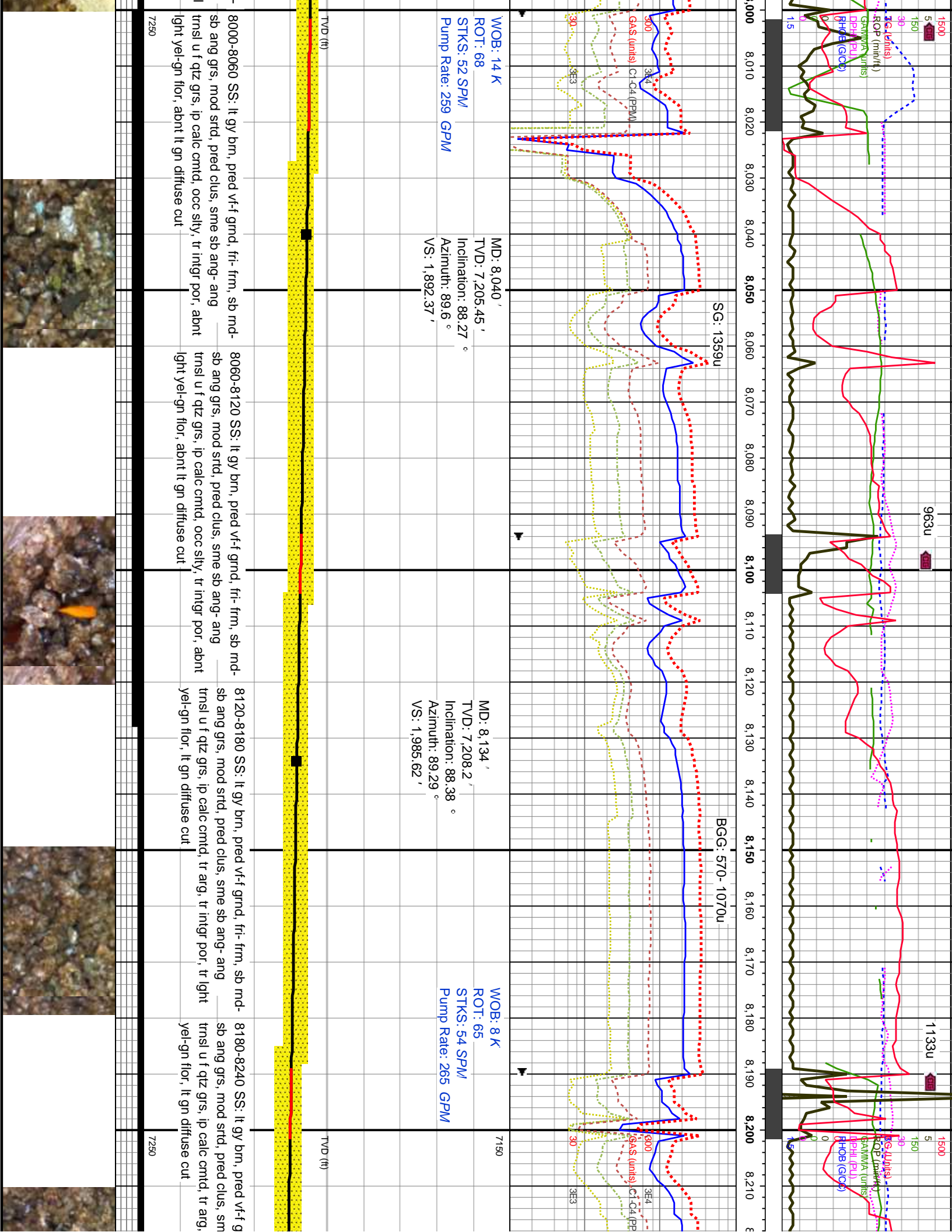
MD: 7,472 '
TVD: 7,160.59 '
Inclination: 68.3 °
Azimuth: 85.8 °
VS: 1,335.4 '

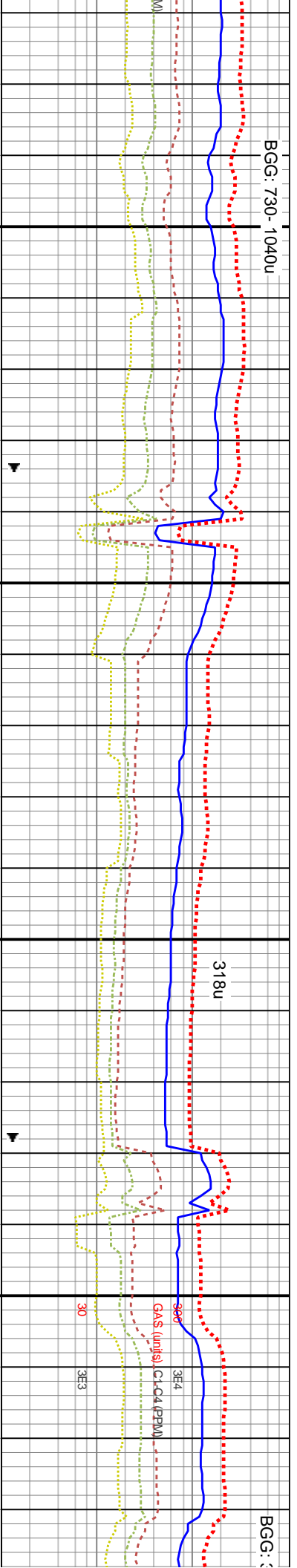
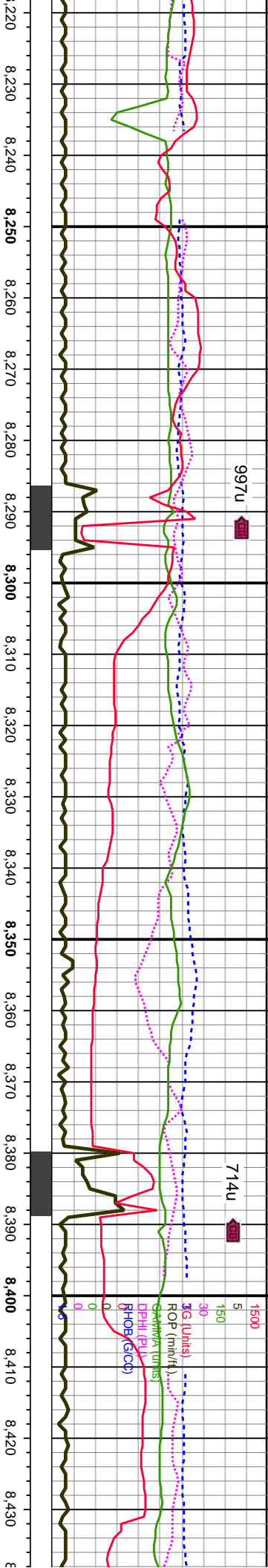
7460-7520 LS: crm-off wh, ip buff- lt gy brn, frm- sl hd, pred blkly, sme pily, mudst, microxln, dns, rthy- chky tex, v tr lt gn flor, rr pyr, sme dk silty sh

MD: 7,519 '
TVD: 7,176.28 '
Inclination: 72.7
Azimuth: 88.1 °
VS: 1,379.55 '

7520-7580 LS: crm-off wh, ip buff-
pred blkly, sme pty, mudst, microxli
tex, rr pyr, tr dk slty sh, tr lt gn crust







MD: 8,228 '
TVD: 7,210.77 '
Inclination: 88.49 °
Azimuth: 88.48 °
VS: 2,078.98 '

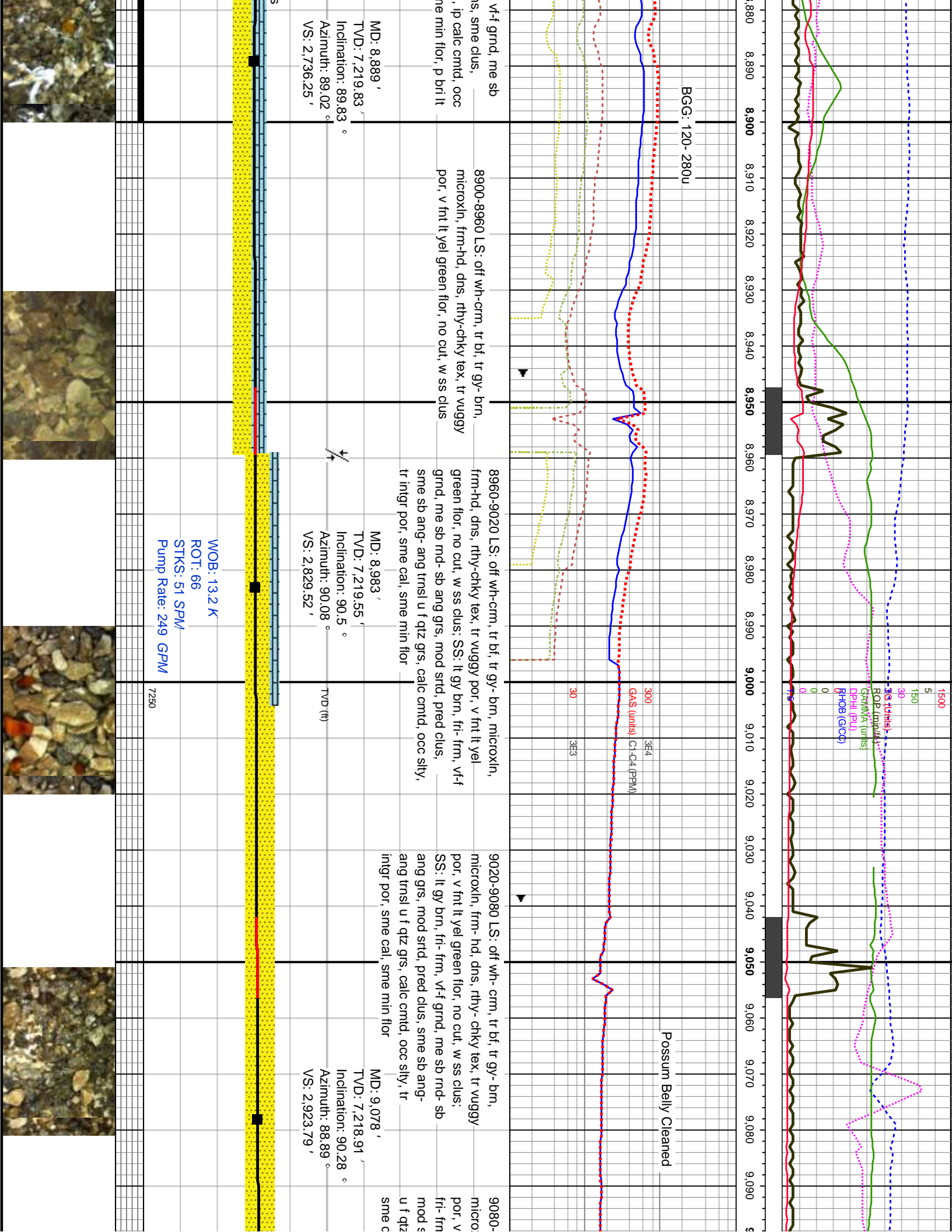
MD: 8,323 '
TVD: 7,213.09 '
Inclination: 88.71 °
Azimuth: 87.11 °
VS: 2,173.53 '

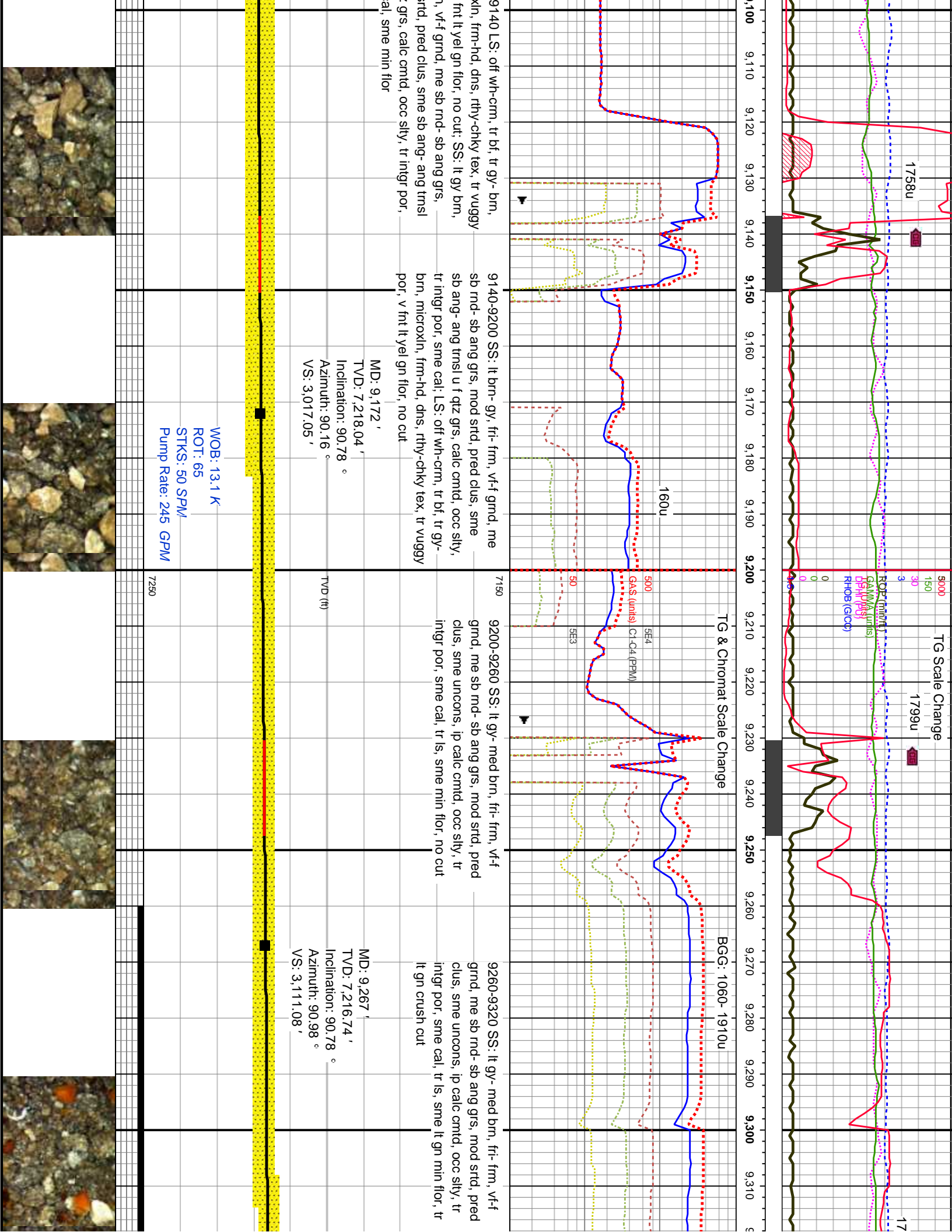
WOB: 8 K
ROT: 66
STKS: 53 SPM/
Pump Rate: 261 GPM

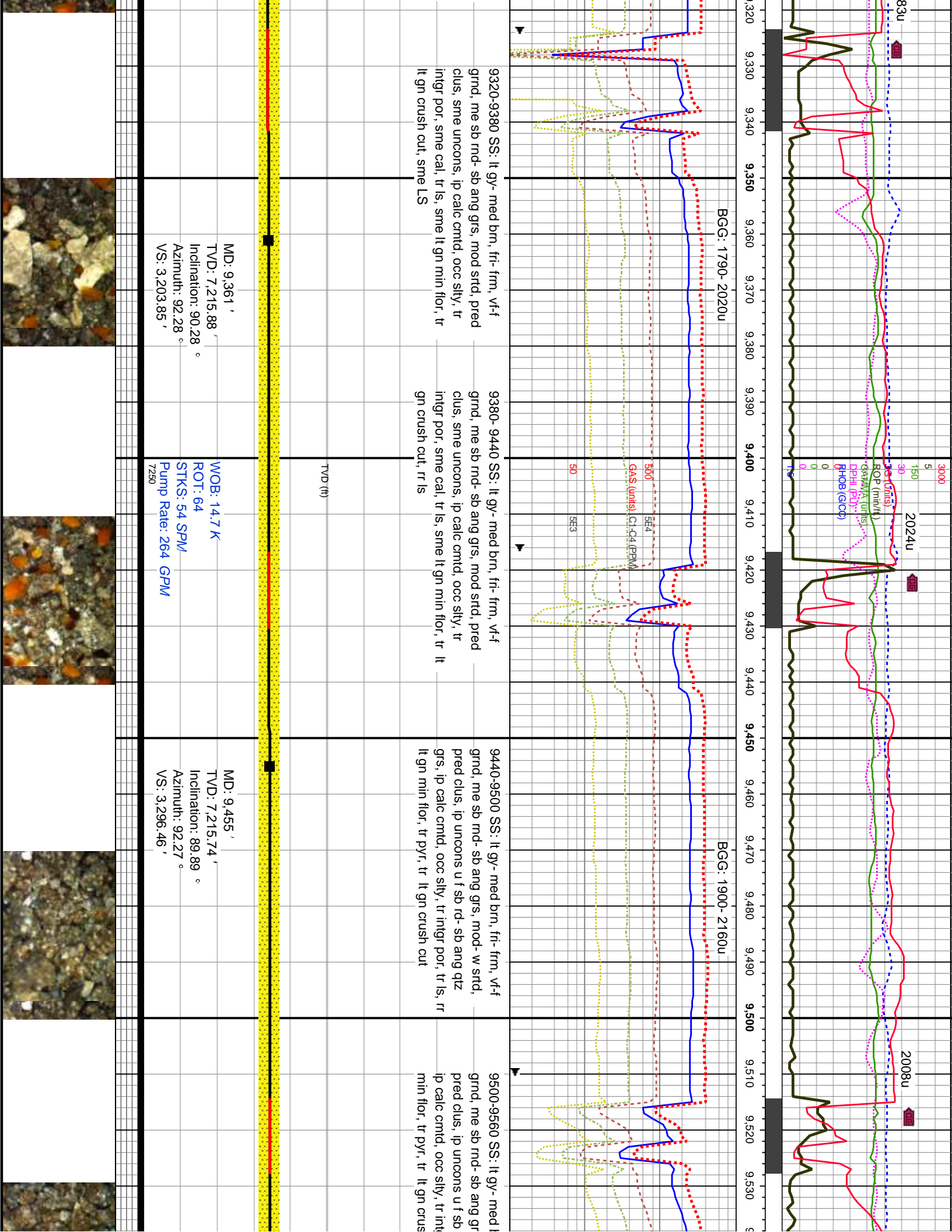
MD: 8,417 '
TVD: 7,214.33 '
Inclination: 89.78 °
Azimuth: 87.61 °
VS: 2,267.17 '

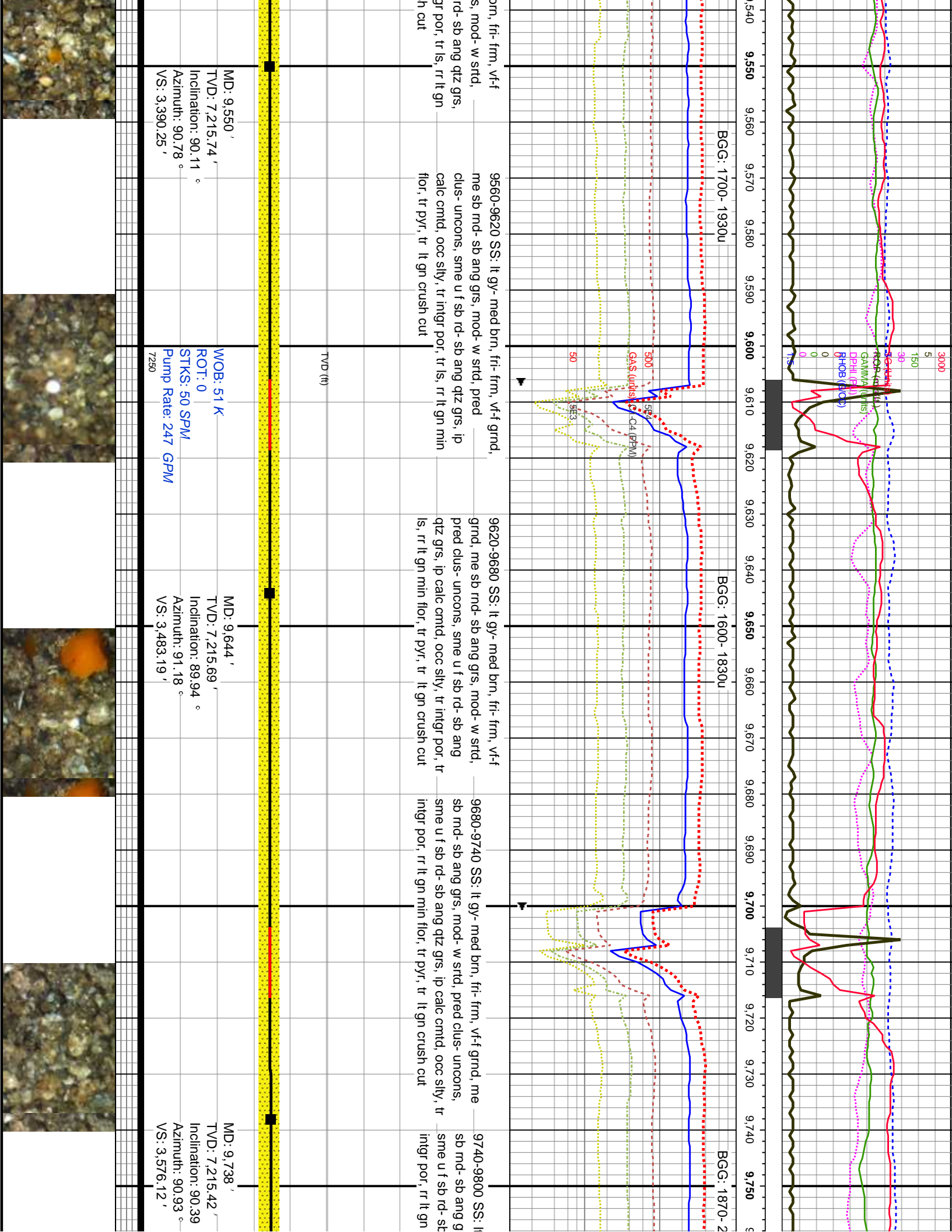
8240-8300 SS: lt gy brn, pred vf-f gmd, fri-frm, sb md- sb ang grs, mod strd, pred clus, sme sb ang- ang trns l u f qtz grs, ip calc cmtd, ply cmtd, tr arg, tr ingr por, tr lght yel-gn flor, lt gn stmg cut	8300-8360 SS: lt gy brn, pred vf-f gmd, fri-frm, sb md- sb ang grs, mod strd, pred clus, sme sb ang- ang trns l u f qtz grs, ip calc cmtd, ply cmtd, tr arg, tr ingr por, tr lght yel-gn flor, lt gn stmg cut	8360-8420 SS: lt gy brn, pred vf-f gmd, fri-frm, sb md- sb ang grs, mod strd, pred clus, occ unconcs qtz grs, sme sb ang- ang trns l u f qtz grs, ip calc cmtd, ply cmtd, tr arg, tr ingr por, tr lght yel-gn flor, lt gn stmg cut	8420-8480 SS: l sb ang grs, mod sme sb ang-ang cmtd, tr arg, tr in diffuse cut
--	--	---	--

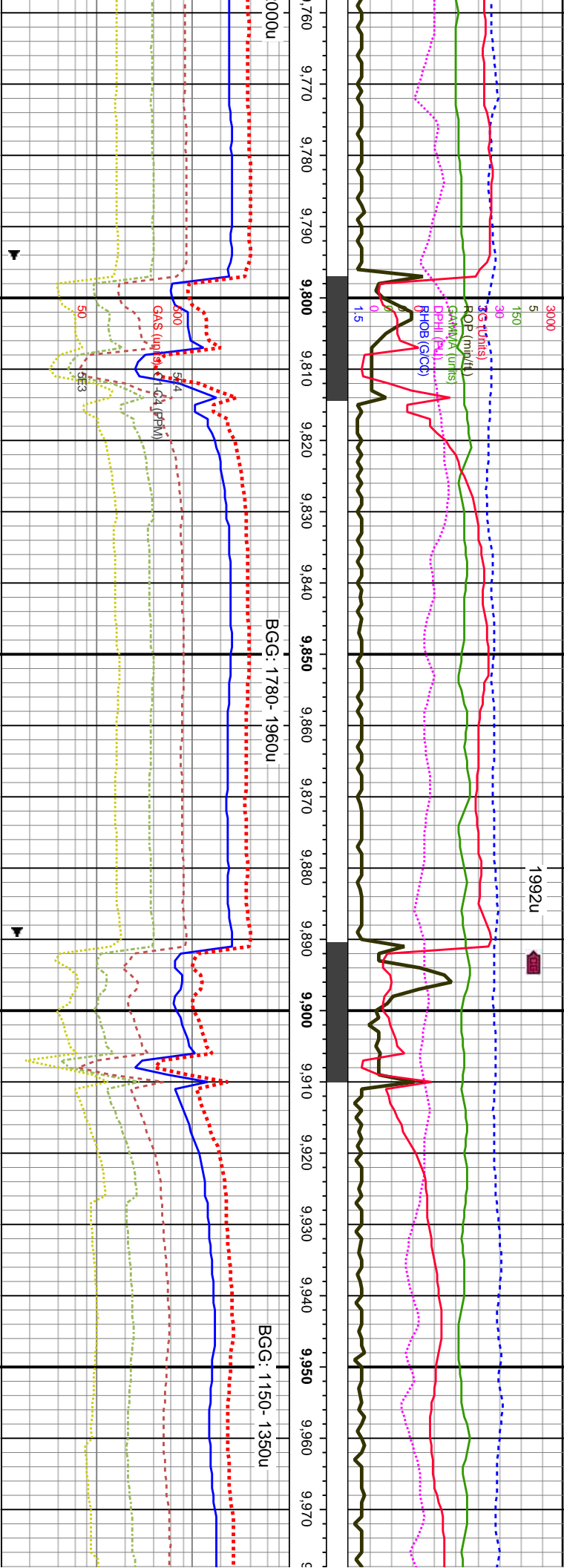












gy- med brn, fri- frm, vf-f grnd, me
s, mod- w strd, pred clus- unconcs,
ang qtz grs, ip calc cmtid, occ sily, tr
min flor, tr pyr, tr lt gn crush cut

9800-9860 SS: lt gy- med brn, fri- frm, vf-f grnd, me
sb md- sb ang grs, mod- w strd, pred clus- unconcs,
sme u f sb rd- sb ang qtz grs, ip calc cmtid, occ sily, tr
intgr por, rr lt gn min flor, tr pyr, tr lt gn crush cut

9860-9920 SS: lt gy- med brn, fri- frm, vf-f grnd, me
sb md- sb ang grs, mod- w strd, pred clus- unconcs,
sme u f sb rd- sb ang qtz grs, ip calc cmtid, occ sily, tr
intgr por, rr lt gn min flor, tr pyr, tr lt gn crush cut

9920-9980 SS: lt gy- gy med brn, fri-frm, vf-f grnd, me
sb md- sb ang grs, mod-w strd, pred clus- com
uncons, sme u f sb rd-sb ang qtz grs, com calc cmtid,
mod-w cmtid, tr intgr por, no visible flor, v frnt lt gn
crush cut

TVD (ft)

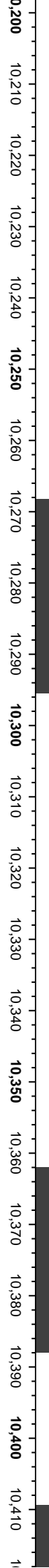
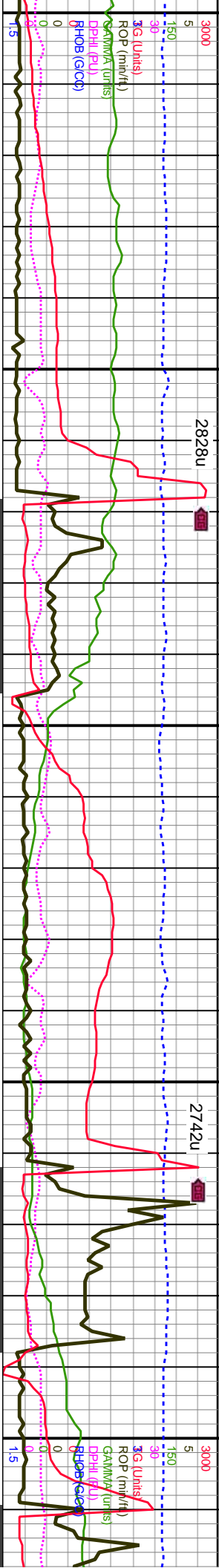
DS @ 9,770'

WOB: 14 K
ROT: 66
STKS: 52 SPM/
Pump Rate: 255 GPM

MD: 9,833 '
TVD: 7,215.05 '
Inclination: 90.06 °
Azimuth: 89.14 °
VS: 3,670.27 '
7250

MD: 9,927 '
TVD: 7,215 '
Inclination: 90 °
Azimuth: 87.87 °
VS: 3,763.73 '

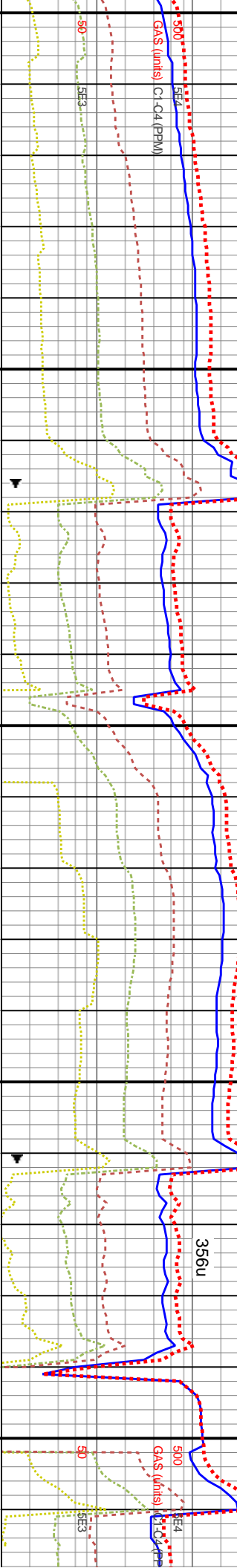




BGG: 270- 760u

BGG: 940- 1540u

SG: 2095u

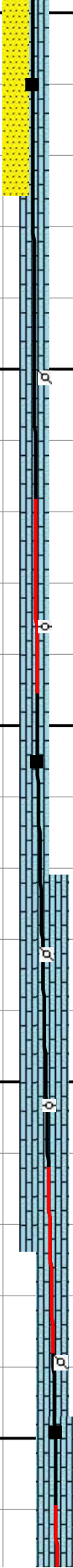


10220-10280 LS: mudst, tr wkst, off wh-crm, tr bf, tr lt
gy brn, microxln, frm-hd, dns, rthy-chky tex, tr vuggy
por, com pels, tr ool, com v frnt lt yel green flor, no cut,
SS: lt gy- gy med brn, fir-fim, vf-f gnd, me sb rnd- sb
ang grs, mod-w srd, pred clus- com uncons, sme u f
sb rd-sb ang qtz grs, com calc cmtd, mod-w cntld, tr
intgr por, no visible flor, v frnt lt gn crush cut

10280-10340 LS: mudst, tr wkst, off wh-crm, tr bf, tr lt
gy brn, microxln, frm-hd, dns, rthy-chky tex, tr vuggy
por, com pels, tr ool, com v frnt lt yel green flor, no cut

10340-10400 LS: mudst, tr wkst, off wh-crm, tr bf, tr lt
gy brn, microxln, frm-hd, dns, rthy-chky tex, tr vuggy
por, com pels, tr ool, com v frnt lt yel green flor, no cut

MD: 10,399 '
TVD: 7,208.7 '
Inclination: 92.75 °
Azimuth: 89.83 °
VS: 4,234.01 1/2 (ft)



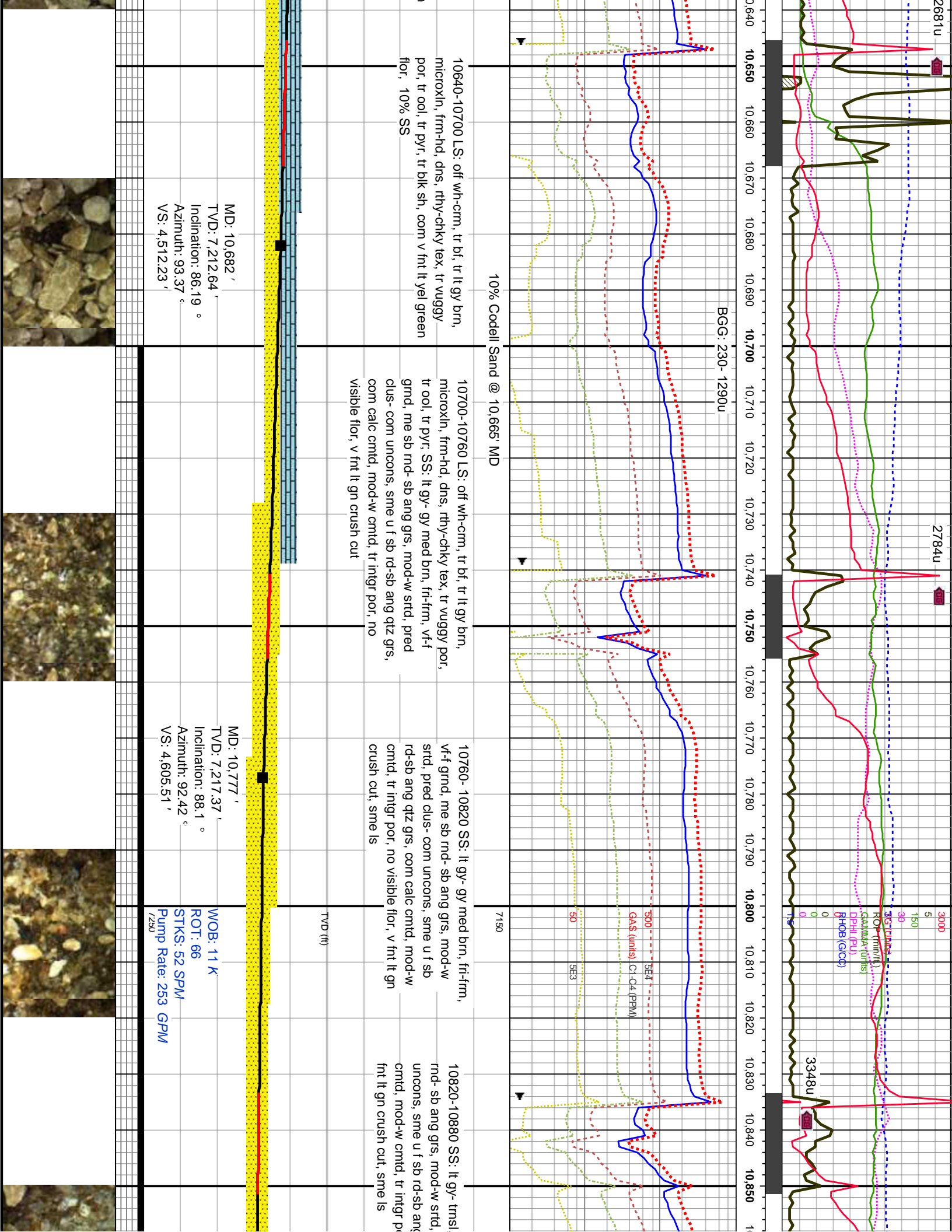
MD: 10,210 '
TVD: 7,213.54 '
Inclination: 89.44 °
Azimuth: 86.26 °
VS: 4,046.02 '
725u

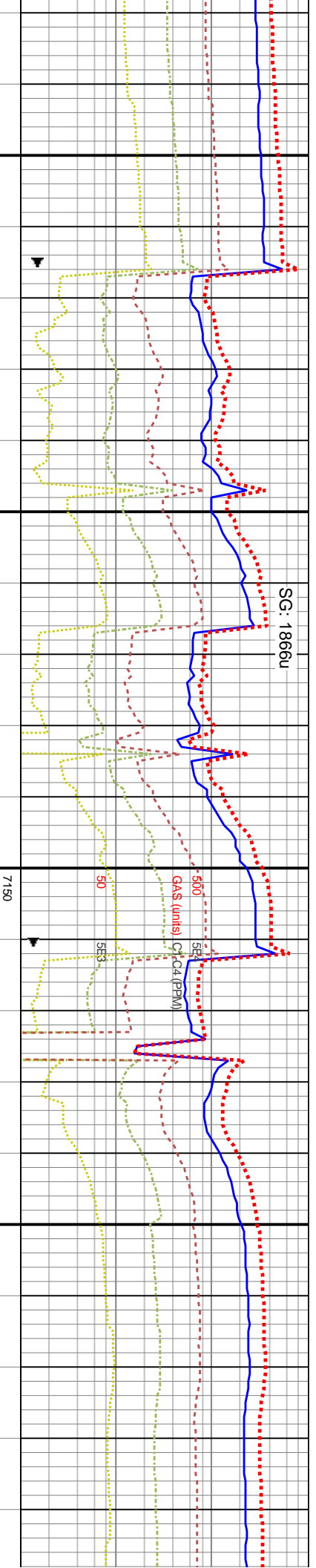
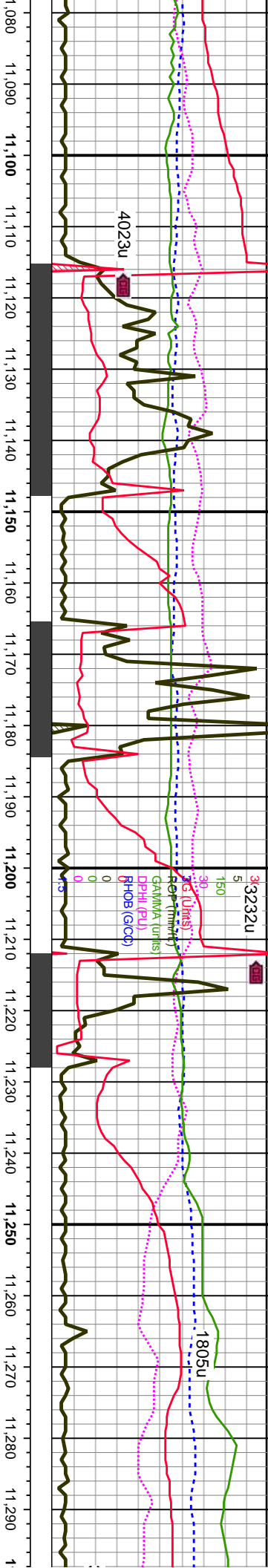
MD: 10,305 '
TVD: 7,212.47 '
Inclination: 91.85 °
Azimuth: 87.91 °
VS: 4,140.69 '
725u

WOB: 20.5 K
ROT: 55
STKS: 52 SPM
Pump Rate: 262 GPM

725u







3.5: It gy- trnsl, fri-firm, vf- f grnd, sb mod-w strd, pred fri-ucons, pred rd-sb ang qtz grs, com calc cmtd, por, tr pyr, very fnt yellow flor, no

11120-11180 SS: lt gy- brn, fri-frm, vf- f gmd, sb md-
sb ang grs, mod-w strd, pred fri-ucons, pred clus
some u f sb rd-sb ang qtz grs, com calc cmt, ply
cmt, intgr por, tr pyr, very fnt yellow flor, no visible cu

11180-11240 SS: lt gy- brn, fir-firm, vf- f gmd, sb md-
sb ang grs, mod-w std, pred fir-ucons, pred clus
some u f sb rd-sb ang qtz grs, com calc cmdt, ply
cmdt, ingr por, tr pyr, very fnt yellow flor, no visible cut

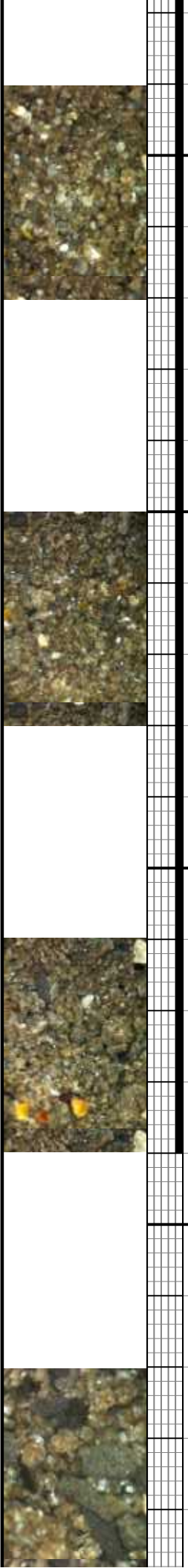
11240-11300 SS: lt gy- bn, fri-frm, vf- f gmd, sb md-sb ang grs, mod-w srid, pred fri-ucons, pred clus some u f sb rd-sb ang qtz grs, com calc cmt, ply cmt, intr por, tr pyr, increasing dk gy silt content, very fin yellow flor, no visible cut

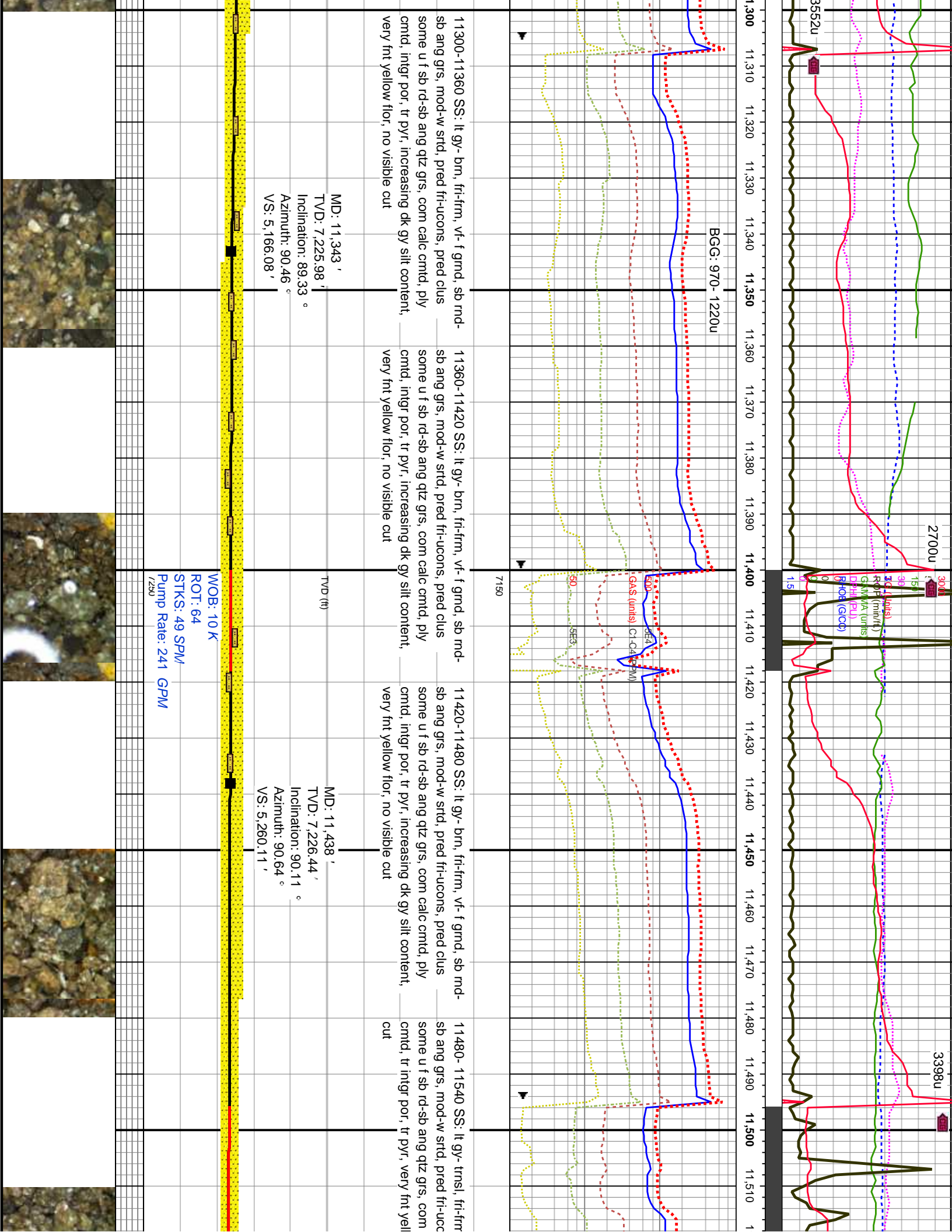
TV_D (ft)

MD: 11,249 '
TVD: 7,223.59 '
Inclination: 87.76 °
Azimuth: 89.14 °
VS: 5,072.9 '

MD: 11,154 "
 TVD: 7,220.44 '
 Inclination: 88.43 °
 Azimuth: 90.27 °
 VS: 4,978.72 '

WOB: 6K
ROT: 65
STKS: 56 SPM
Pump Rate: 275 GPM
7250





3552u

2700u

3398u

BGC: 970- 1220u

GDS (units) C-1-Q4 (BTM)

7150

11300-11360 SS: lt gy- brn, fri-firm, vf- f gmd, sb md-sb ang grs, mod-w srt, pred fri-ucons, pred clus some u f sb rd-sb ang qtz grs, com calc cmt, ply cmt, intgr por, tr pyr, increasing dk gy silt content, very fnt yellow flor, no visible cut

11360-11420 SS: lt gy- brn, fri-firm, vf- f gmd, sb md-sb ang grs, mod-w srt, pred fri-ucons, pred clus some u f sb rd-sb ang qtz grs, com calc cmt, ply cmt, intgr por, tr pyr, increasing dk gy silt content, very fnt yellow flor, no visible cut

11420-11480 SS: lt gy- brn, fri-firm, vf- f gmd, sb md-sb ang grs, mod-w srt, pred fri-ucons, pred clus some u f sb rd-sb ang qtz grs, com calc cmt, ply cmt, intgr por, tr pyr, increasing dk gy silt content, very fnt yellow flor, no visible cut

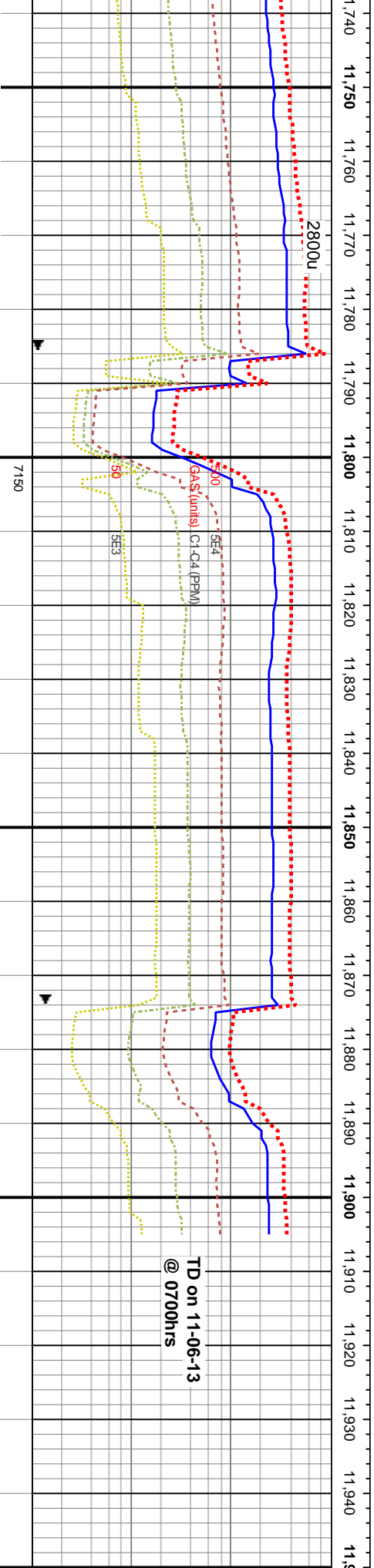
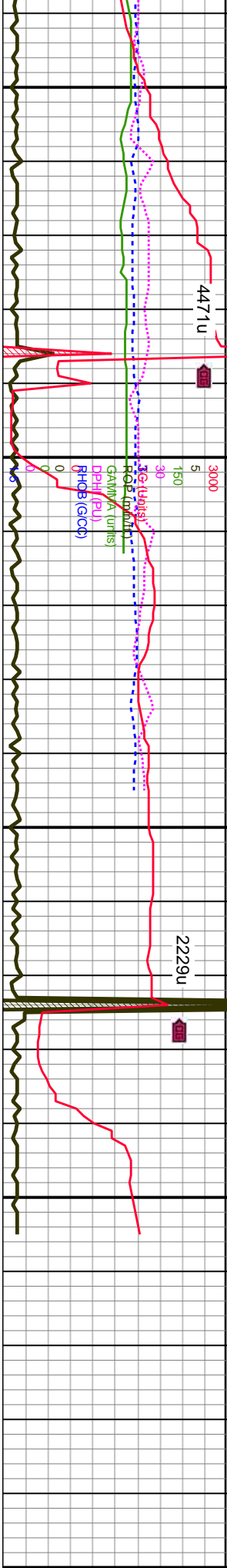
11480- 11540 SS: lt gy- trns, fri-firm sb ang grs, mod-w srt, pred fri-ucons, pred clus some u f sb rd-sb ang qtz grs, com calc cmt, intgr por, tr pyr, very fnt yell cut

MD: 11,343 '
TVD: 7,225.98 '
Inclination: 89.33 °
Azimuth: 90.46 °
VS: 5,166.08 '

TVD (ft)

MD: 11,438 '
TVD: 7,226.44 '
Inclination: 90.11 °
Azimuth: 90.64 °
VS: 5,260.11 '

WOB: 10 K
ROT: 64
STKS: 49 SPM
Pump Rate: 241 GPM
/ZSU



SS: lt gy- med brn, tr, tmsl, fri-frm, vf-
sb ang grs, mod-w strd, pred
clus some u f sb rd-sb ang qtz grs,
ply cmtd, tr intgr por, tr pyr, very fnt
visible cut

11780-11840 SS: pred med brn- tmsl brn-
trsl, fri-frm, vf- f grnd, sb rnd- sb ang grs,
mod-w strd, pred fri-ucons, pred clus, sme u
f sb rd-sb ang qtz grs, com calc cmtd, ply
cmtd, tr intgr por, tr pyr, v fnt yel flr

11840-11900 SS: pred med brn- trsl brn-
trsl, fri-frm, vf- f grnd, sb rnd- sb ang grs,
mod-w strd, pred fri-ucons, pred clus, sme u f
sb rd-sb ang qtz grs, com calc cmtd, ply cmtd,
tr intgr por, tr pyr, v fnt yel flr

MD: 11,815 '
TVD: 7,227.69 '
Inclination: 90.84 °
Azimuth: 87.11 °
VS: 5,583.7 '

MD: 11,903 '
TVD: 7,225.8 '
Inclination: 91.62 °
Azimuth: 87.69 °
VS: 5,671.59 '

DP @ 11,800'

7250

TD on 11-06-13
@ 0700hrs

