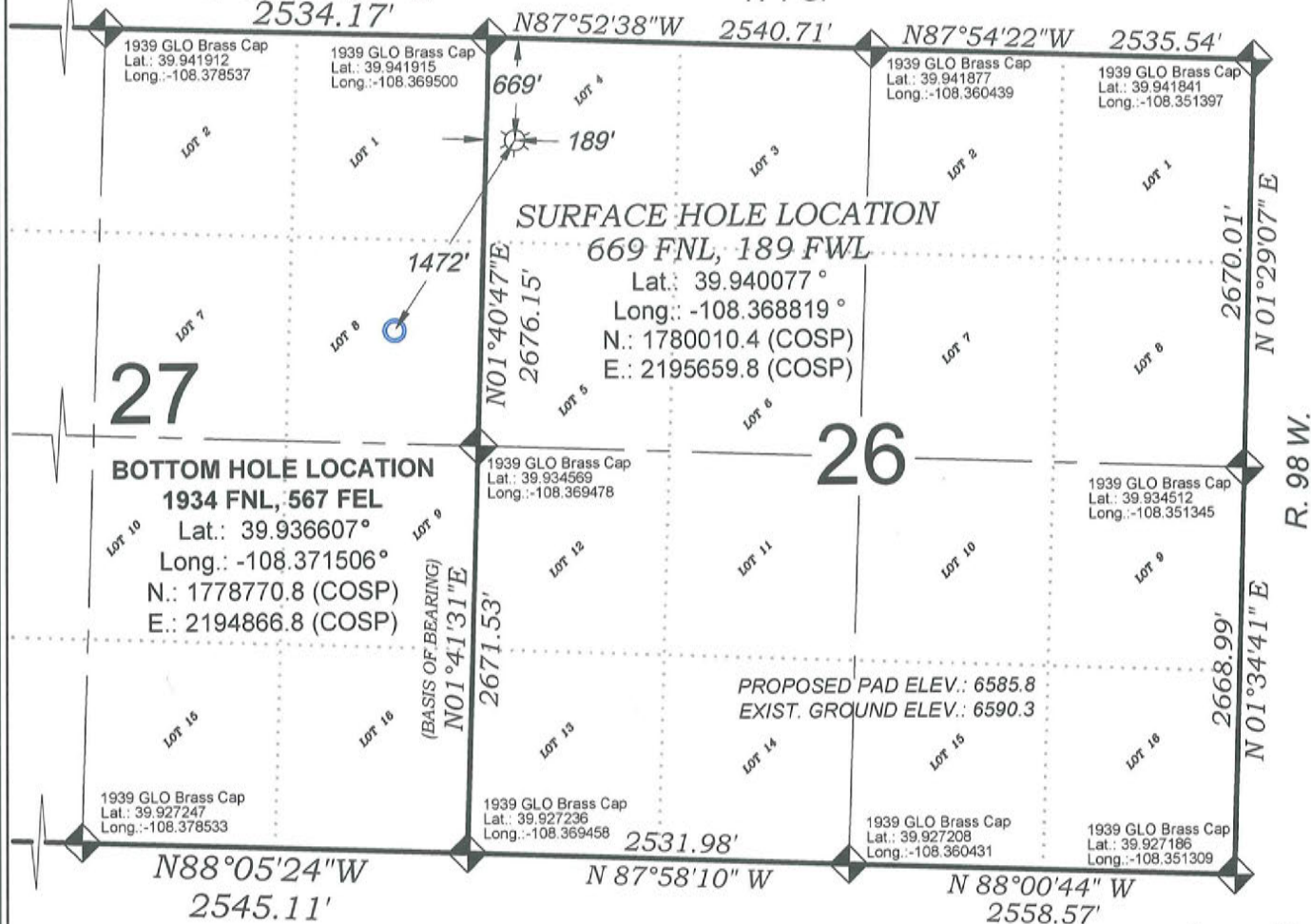


# Federal RGU 342-27-198

T. 1 S.



THERE ARE NO VISIBLE  
IMPROVEMENTS WITHIN 400'  
OF THIS LOCATION

## SURVEYORS STATEMENT

I, MICHAEL J. LANGHORNE, A REGISTERED LAND SURVEYOR IN THE STATE OF COLORADO DO HEREBY CERTIFY THAT THE SURVEY SHOWN HEREON WAS PREPARED UNDER MY DIRECT SUPERVISION AND HAS BEEN STAKED ON THE GROUND AS SHOWN ON THE PLAT AND CHECKING THAT THIS MAP IS A TRUE REPRESENTATION THEREOF.

MICHAEL J. LANGHORNE, COLORADO REGISTRATION NO. 36572  
FOR AND ON BEHALF OF  
BOOKCLIFF SURVEY SERVICES, INC.

## REFERENCES

- DEPENDENT RESURVEY and Subdivision of Certain Sections T. 1 S., R. 98 W., 6<sup>th</sup> P.M (BLM PLAT)
- U.S.G.S. QUAD: Square S Ranch, CO

SURVEY DATE: 2/14/13

MAP DATE: 7/25/13

SCALE: 1" = 1200'

PLAT: 1 of 1

PROJECT: Highlands

NW1/4 NW1/4, SECTION 26  
T. 1 S., R. 98 W. of the 6th. P.M.  
Rio BLANCO COUNTY, COLORADO