



410 17th Street, Suite 1500  
Denver, CO 80202  
(720) 440-6100 phone  
(720) 305-0804 fax

[Bonanzacrk.com](http://Bonanzacrk.com)

January 30, 2014

Colorado Oil and Gas Conservation Commission  
The Chancery Building  
1120 Lincoln Street, Suite 801  
Denver, CO 80203

Attn: Director Matt Lepore

Re: Notice of 318A.a.(4)D. Horizontal Wellbore Spacing Unit Proposal  
State Pronghorn A-E-16HNB  
SHL: NWNW Sec 16-5N-61W, 6<sup>TH</sup> PM  
Top of Production: NWNW Sec 16-5N-61W, 6<sup>TH</sup> PM  
Bottom of Production: SWSW Sec 16-5N-61W, 6<sup>TH</sup> PM  
Weld County, Colorado

Director Lepore:

Bonanza Creek Energy, Inc. (Bonanza) intends to permit, drill and operate the referenced Niobrara horizontal well. As defined by Colorado Oil and Gas Conservation Commission (COGCC) Rule 318A.a.(4)D., Bonanza proposes the following wellbore spacing unit:

5N 63W Section 16 W/2W/2 and 5N 61W Section 17 E/2E/2, containing 320 acres more or less

Bonanza has notified the other owners in the unit and no objections were received. Copies of the notifications are maintained in Bonanza's files.

Bonanza respectfully requests that you review the enclosed wellbore spacing unit documentation and approve the referenced APD.

Please do not hesitate to call or email me at (720) 440-6100 or [REdelen@BonanzaCrk.com](mailto:REdelen@BonanzaCrk.com), should you have any questions pertaining to this matter.

Thank you for your cooperation.

Sincerely,

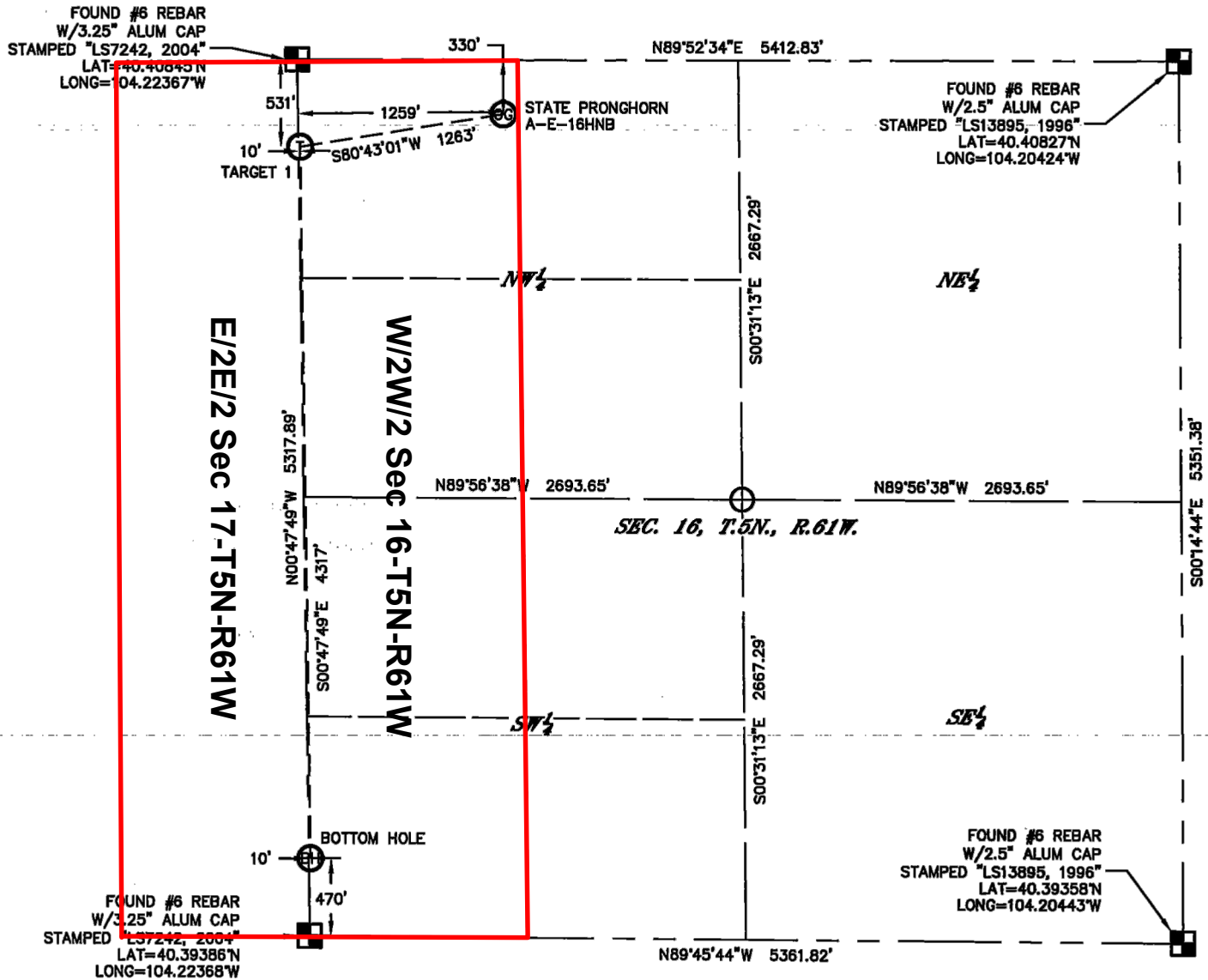
A handwritten signature in blue ink that reads 'Randy Edelen'.

Randy Edelen, P. E.  
Regulatory Specialist  
BONANZA CREEK ENERGY, INC.  
BONANZA CREEK ENERGY OPERATING COMPANY, LLC

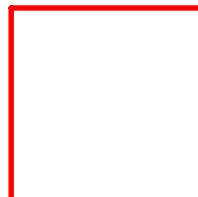
KING SURVEYORS 650 E. GARDEN DR. WINDSOR, CO 80550  
**WELL LOCATION CERTIFICATE**

STATE PRONGHORN A-E-16HNB  
 THIS MAP DOES NOT REPRESENT A BOUNDARY SURVEY

SECTION: 16  
 TOWNSHIP: 5N  
 RANGE: 61W



In accordance with a request from RANDY EDELEN with BONANZA CREEK ENERGY, INC., King Surveyors has determined the surface location of STATE PRONGHORN A-E-16HNB to be 330' from the NORTH line and 1259' from the WEST line and the bottom hole to be 470' from the SOUTH line and 10' from the WEST line as measured at right angles from the section



Wellbore Spacing Unit Outline



**Wellbore Spacing Unit Map**

17 December 2013 ksc

State Pronghorn A-E-16HNB  
 W/2W/2 Sec 16-T5N-R61W 6th PM  
 E/2E/2 Sec 17-T5N-R61W 6th PM  
 Weld County, Colorado