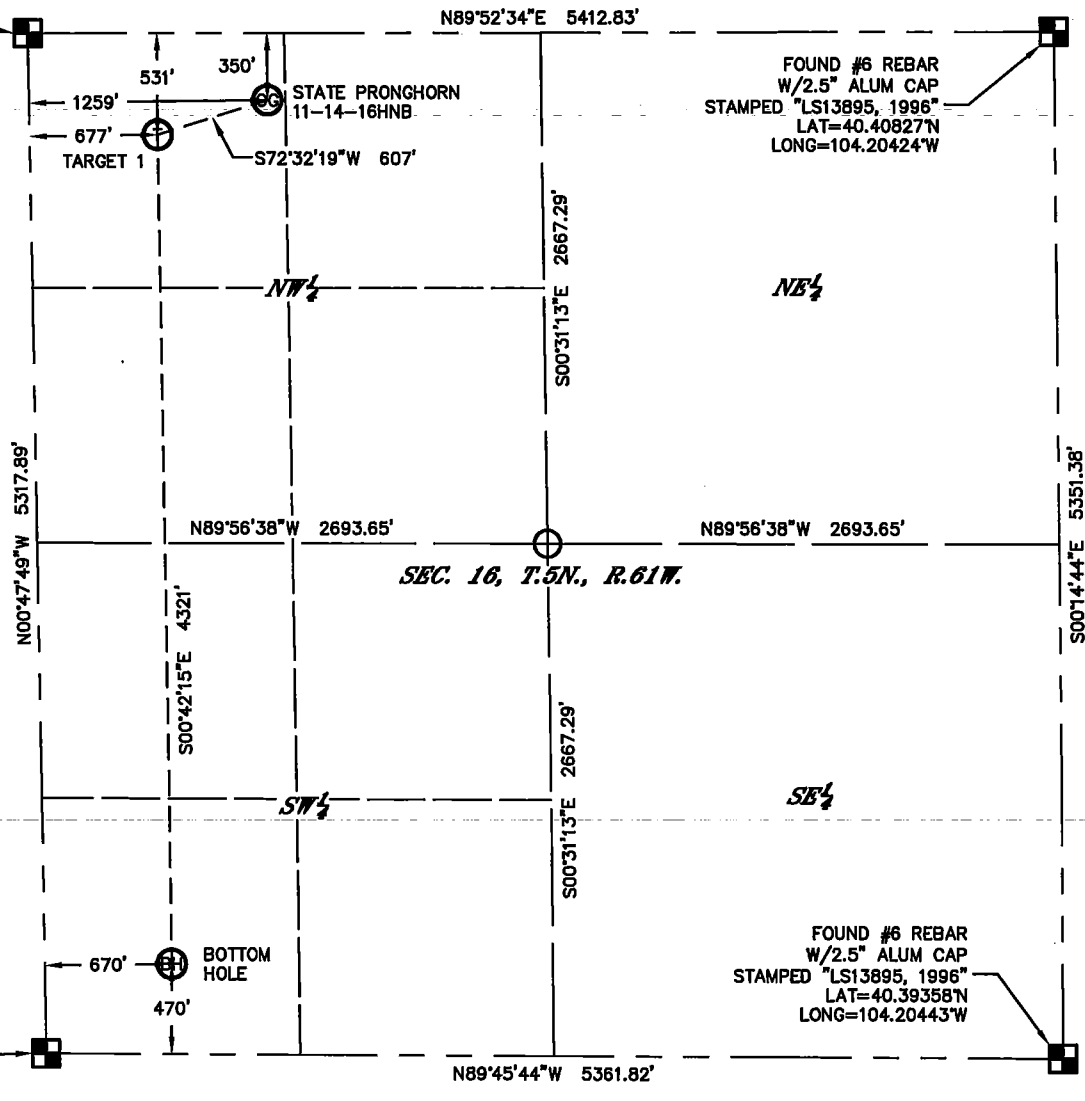


WELL LOCATION CERTIFICATE

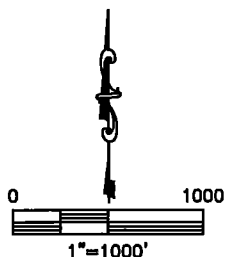
STATE PRONGHORN 11-14-16HNB

THIS MAP DOES NOT REPRESENT A BOUNDARY SURVEY

SECTION: 16
TOWNSHIP: 5N
RANGE: 61WFOUND #6 REBAR
W/3.25" ALUM CAP
STAMPED "LS7242, 2004"
LAT=40.40845N
LONG=104.22367W

In accordance with a request from RANDY EDELEN with BONANZA CREEK ENERGY, INC., King Surveyors has determined the surface location of STATE PRONGHORN 11-14-16HNB to be 350' from the NORTH line and 1259' from the WEST line and the bottom hole to be 470' from the SOUTH line and 670' from the WEST line, as measured at right angles, from the section lines of Section 16, Township 5 North, Range 61 West of the Sixth Principal Meridian, County of Weld, State of Colorado.

I hereby state that this Well Location Certificate was prepared by me, or under my direct supervision, that the fieldwork was completed on 11-20-2013, for and on behalf of BONANZA CREEK ENERGY, INC., that this is not a Land Survey Plat or an Improvement Survey Plat, and that it is not to be relied upon for establishment of fence, building, or other future improvement lines.



NOTES:

- 1) Bearings shown are Grid Bearings of the Colorado State Plane Coordinate System, North Zone, North American Datum 1983. The lineal dimensions as contained herein are based upon the "U.S. Survey Foot."
- 2) Ground elevations are based on an observed GPS elevation (NAVD 1988 DATUM).
- 4) IMPROVEMENTS: See LOCATION DRAWING for all visible Improvements within 500' of the disturbed area.
- 5) SURFACE USE: WELL PAD/PASTURE/PRAIRIE
- 6) INSTRUMENT OPERATOR: STEVEN WOOD

NOTICE

According to Colorado law, you must commence any legal action based upon any defect in this W.L.C. within three years after you first discover such defect. In no event, may any action based upon any defect in this survey be commenced more than ten years after the date of the certificate shown hereon. (13-80-105 C.R.S.)

LEGEND

- = FOUND ALIQUOT MONUMENT AS DESCRIBED
- = CALCULATED POSITION

SURFACE LOCATION

LATITUDE: 40.40745N
LONGITUDE: 104.21915W
PDOP: 1.2
ELEV: 4642'

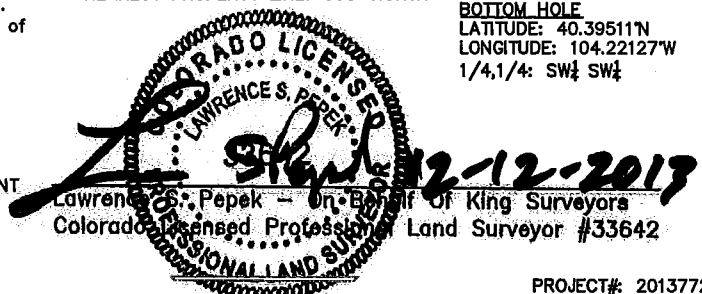
1/4,1/4: NW 1/4 NW 1/4
NEAREST PROPERTY LINE: 350' NORTH

TARGET

LATITUDE: 40.40697N
LONGITUDE: 104.22124W
1/4,1/4: NW 1/4 NW 1/4

BOTTOM HOLE

LATITUDE: 40.39511N
LONGITUDE: 104.22127W
1/4,1/4: SW 1/4 SW 1/4



PROJECT#: 2013772