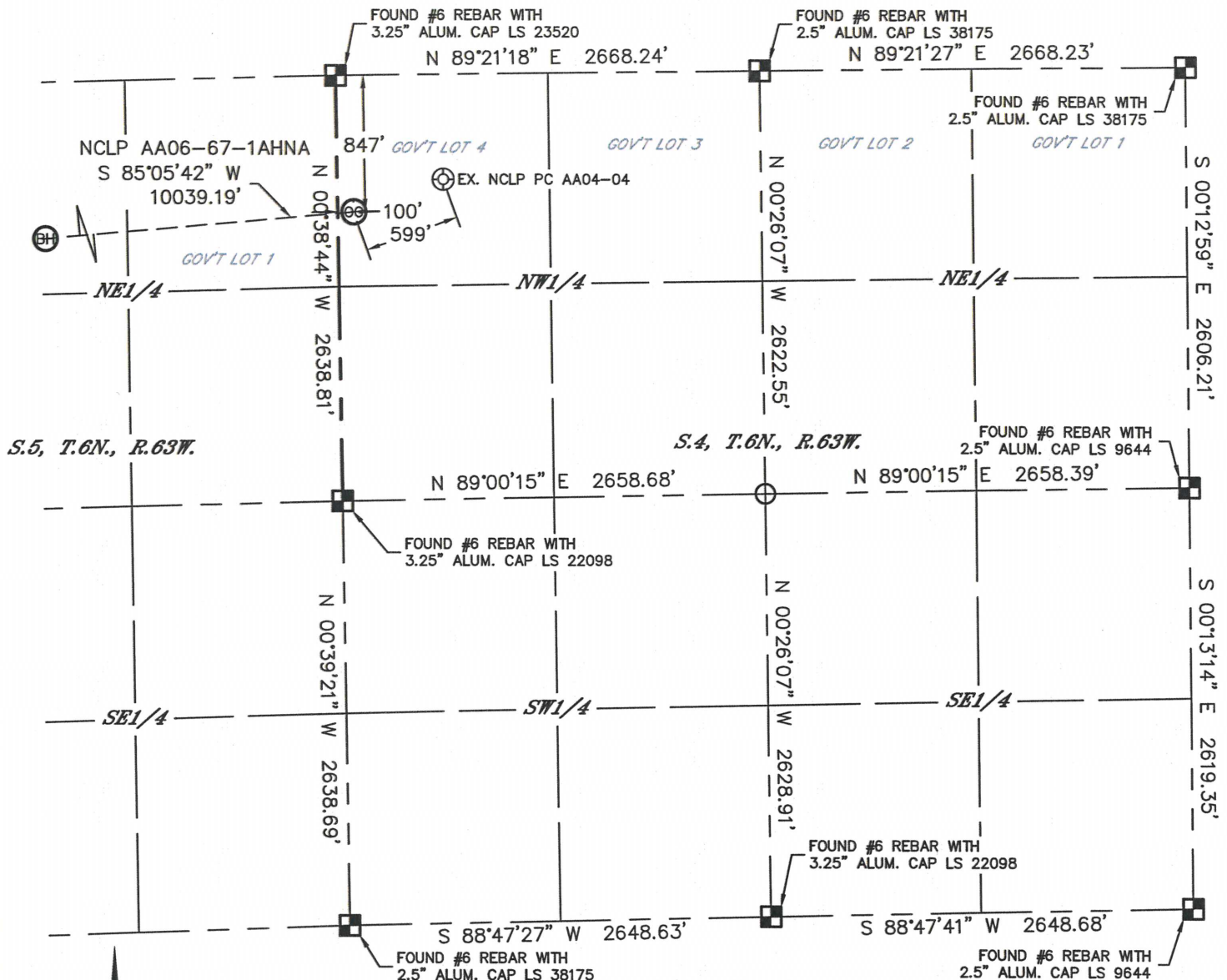


# WELL LOCATION CERTIFICATE

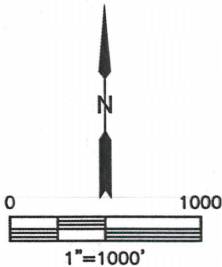
THIS MAP DOES NOT REPRESENT A BOUNDARY SURVEY

SECTION: 4  
TOWNSHIP: 6N  
RANGE: 63W



In accordance with a request from Greg Wilson with Noble Energy Inc., Lat40, Inc. has determined the surface location of the NCLP AA06-67-1AHNA to be 847' from the NORTH line and 100' from the WEST line as measured at right angles from the section lines of Section 4, Township 6 North, Range 63 West and the bottom hole to be 1485' from the NORTH line and 535' from the WEST line as measured at right angles from the section lines of Section 6, Township 6 North, Range 63 West of the Sixth Principal Meridian, County of Weld, State of Colorado.

I hereby state that this Well Location Certificate was prepared by me, or under my direct supervision, that the fieldwork was completed on 7/12/2013, for and on behalf of Noble Energy Inc.. That this is not a Land Survey Plat or an Improvement Survey Plat, and that it is not to be relied upon for establishment of fence, building, or other future improvement lines.





SURFACE LOCATION

LAT: 40.52068°N  
LONG: 104.45086°W  
PDOP: 1.2  
ELEV: 4715'  
1/4,1/4: NW1/4NW1/4 (GOV'T LOT 4)



BOTTOM HOLE

LAT: 40.51864N  
LONG: 104.48686W

**NOTE:**

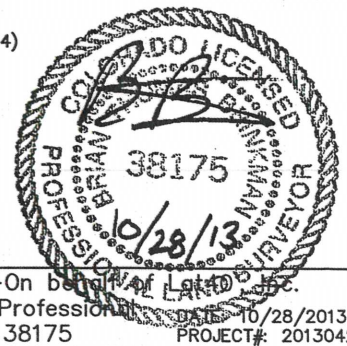
- 1) Bearings shown are Grid Bearings of the Colorado State Plane Coordinate System, North Zone, North American Datum 1983/2007. The lineal dimensions as contained herein are based upon the "U.S. Survey Foot."  
2) Ground elevations are based on an observed GPS elevation (NAVD 1988 DATUM).  
3) IMPROVEMENTS: See LOCATION DRAWING for all visible improvements within 500' of disturbed area.  
4) SURFACE USE: RANGELAND/PASTURE  
5) INSTRUMENT OPERATOR: ADAM KELLY  
6) NEAREST EXISTING WELL: NCLP PC AA04-04, 599'  
NEAREST CULTURAL ITEMS:  
BUILDING: ±2303' NW  
BUILDING UNIT: ±2303' NW  
HIGH OCCUPANCY BUILDING UNIT: 1001'+  
DESIGNATED OUTSIDE ACTIVITY AREA: 1001'+  
PUBLIC ROAD: COUNTY ROAD 74, 839' N  
ABOVEGROUND UTILITY: 816' N  
RAILROAD: 5280'+  
PROPERTY LINE: 847' N
- LEGEND  
 = ALIQUOT MONUMENT AS DE  
 = CALCULATED POSITION

### LEGEND

-  = ALIQUOT MONUMENT AS DESCRIBED  
 = CALCULATED POSITION

*SHEET 1 OF 3*

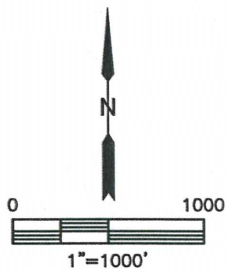
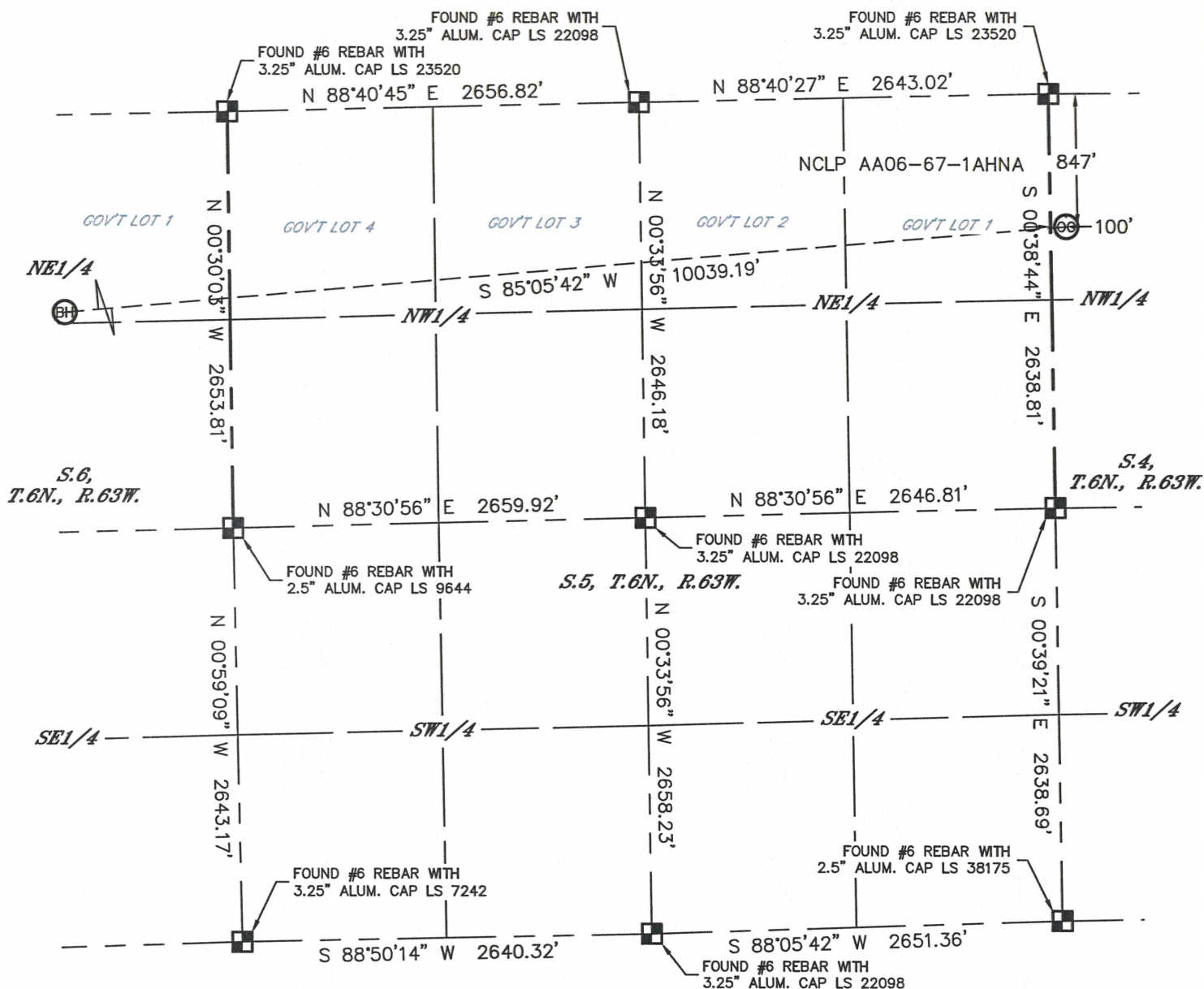
Brian T. Brinkman—On behalf of LATAD, LLC.  
Colorado Licensed Professional Land Surveyor No. 38175  
DATE: 10/28/2013  
PROJECT#: 2013042



# WELL LOCATION CERTIFICATE

THIS MAP DOES NOT REPRESENT A BOUNDARY SURVEY


SECTION: 4  
TOWNSHIP: 6N  
RANGE: 63W



**NOTE**

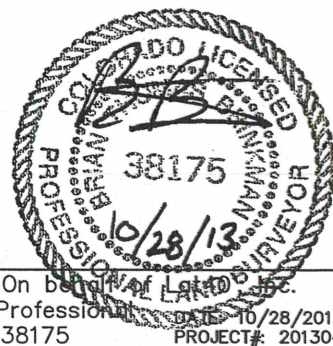
According to Colorado law, you must commence any legal action based upon any defect in this W.L.C. within three years after you discover such defect. In no event, may any action based upon any defect in this survey be commenced more than ten years after the date of the certificate shown hereon. (13-80-105 C.R.S.)

### LEGEND

-  = ALIQUOT MONUMENT AS DESCRIBED  
 = CALCULATED POSITION

*SHEET 2 OF 3*

Brian T. Brinkman—On behalf of LAND, Inc.  
Colorado Licensed Professional Land Surveyor No. 38175  
DATE: 10/28/2013  
PROJECT#: 2013042



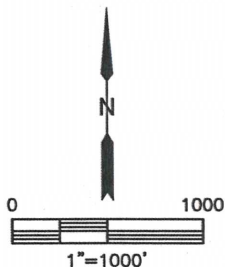
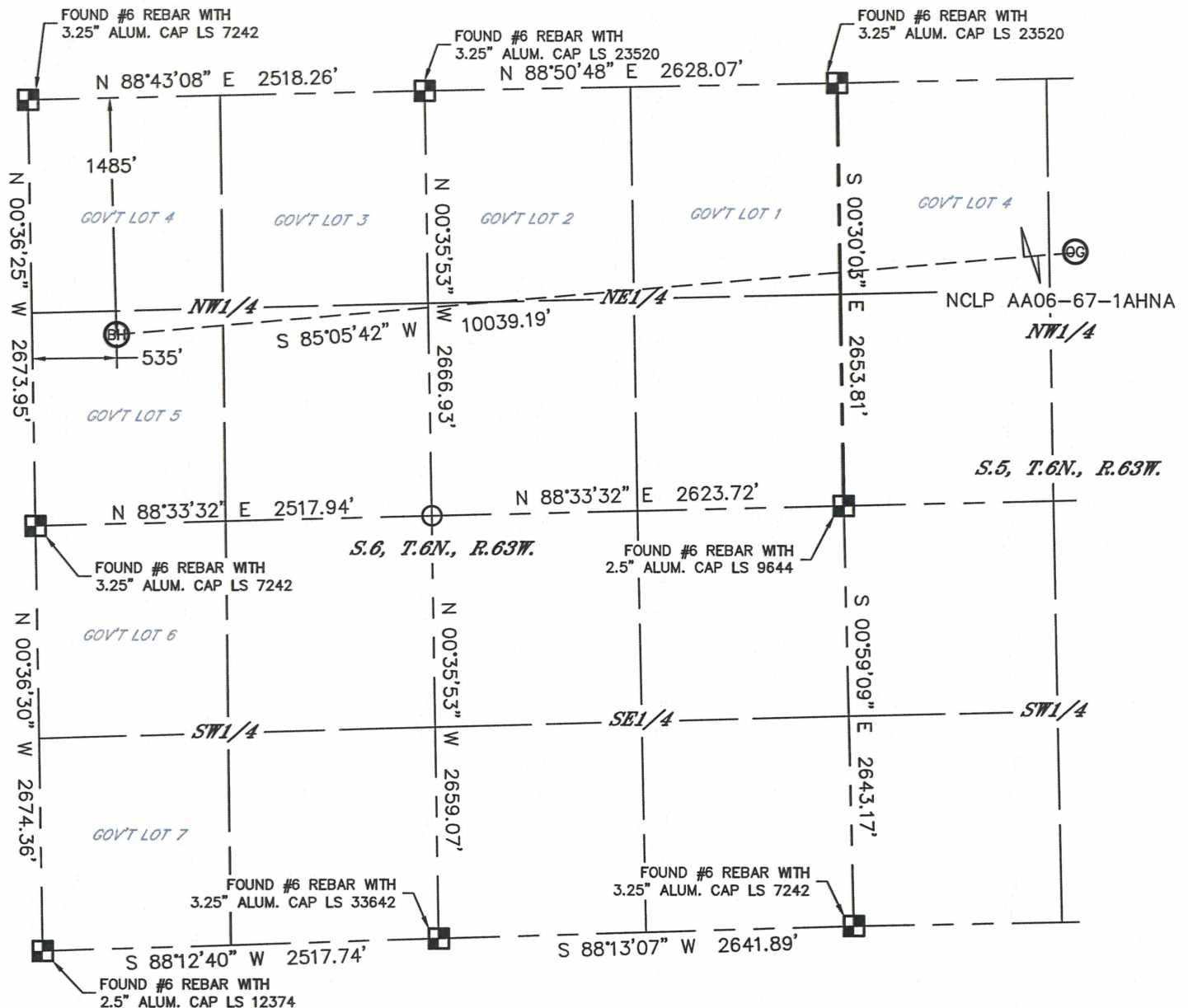


Lat40°, Inc. 1635 Foxtrail Drive, Suite 325 Loveland, CO 970-776-3321

# WELL LOCATION CERTIFICATE

THIS MAP DOES NOT REPRESENT A BOUNDARY SURVEY



SECTION: 4  
TOWNSHIP: 6N  
RANGE: 63W



### NOTE

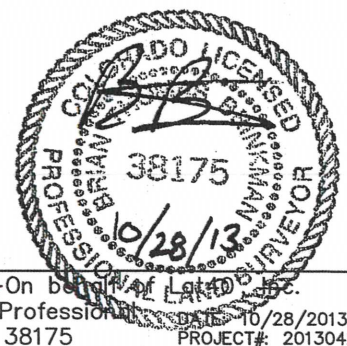
According to Colorado law, you must commence any legal action based upon any defect in this W.L.C. within three years after you discover such defect. In no event, may any action based upon any defect in this survey be commenced more than ten years after the date of the certificate shown hereon. (13-80-105 C.R.S.)

### LEGEND

-  = ALIQUOT MONUMENT AS DESCRIBED  
 = CALCULATED POSITION

***SHEET 3 OF 3***

Brian T. Brinkman—On behalf of LATCO, Inc.  
Colorado Licensed Professional Land Surveyor No. 38175  
DATE: 10/28/2013  
PROJECT#: 2013042



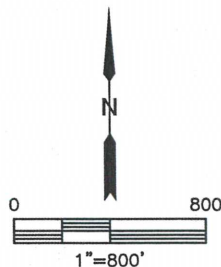
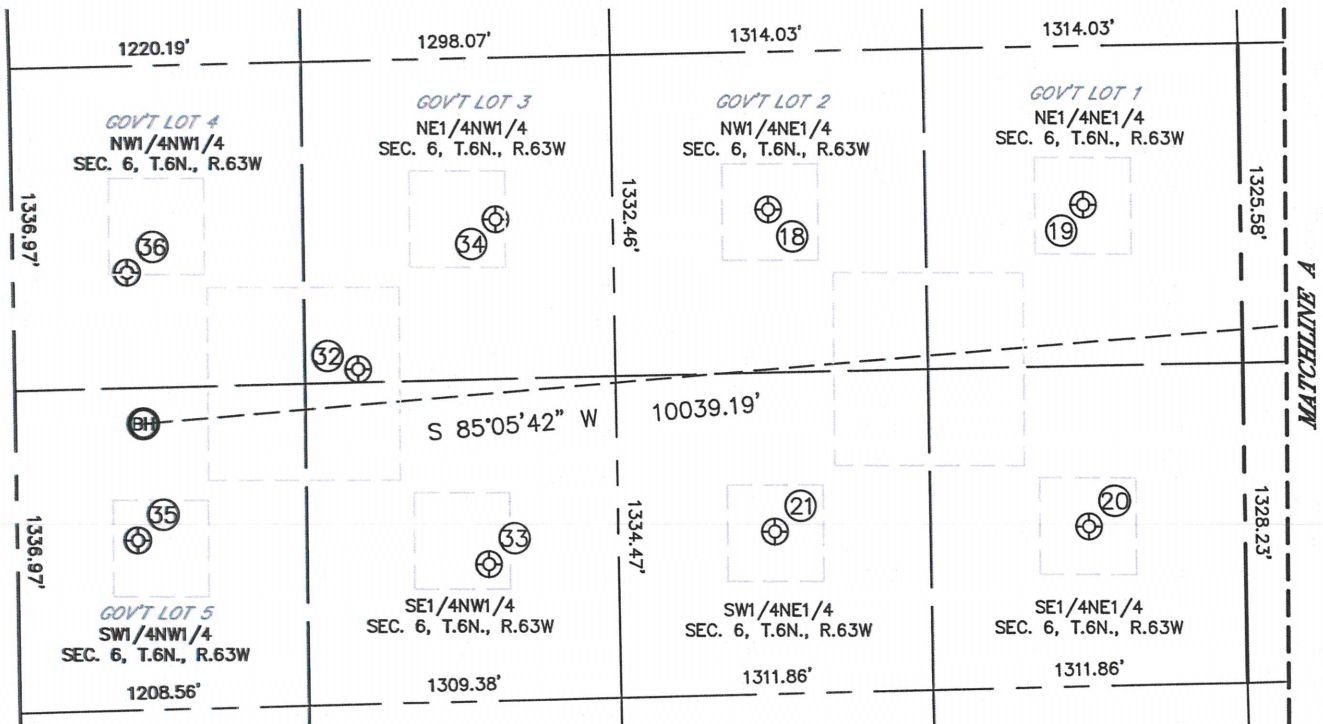
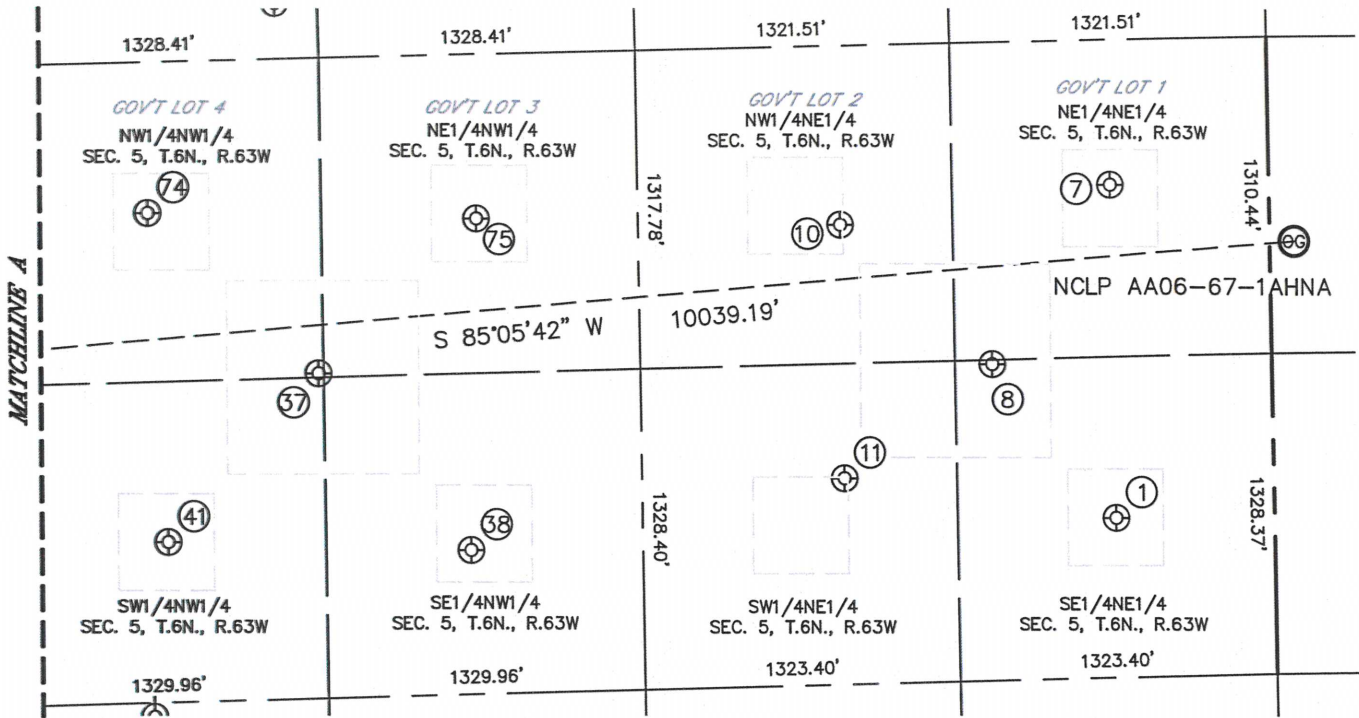


Lat40°, Inc. 1635 Foxtrail Drive, Suite 325 Loveland, CO 970-776-3321

# SITE SKETCH

NCLP AA06-67-1AHNA

SECTION: 4  
TOWNSHIP: 6N  
RANGE: 63W



SHEET 1 OF 2

DATE: 10/28/2013  
PROJECT#: 2013042



Lat40°, Inc. 1635 Foxtrail Drive, Suite 325 Loveland, CO 970-776-3321

# SITE SKETCH

NCLP AA06-67-1AHNA

SECTION: 4  
TOWNSHIP: 6N  
RANGE: 63W

WELL #	WELL NAME	SHL FOOTAGE				SHL LAT °	SHL LONG °	PDOP	ELEV (FT.)	1/4/1/4
1	NCLP USX AA 5-8	1980	FNL	657	FEL	40.51755	-104.45358	1.2	4718	SENE
7	NCLP USX AA 5-1	600	FNL	659	FEL	40.52134	-104.45359	1.4	4713	NENE
8	CACHE-USX AA 5-17	1331	FNL	1165	FEL	40.51931	-104.45541	1.4	4722	SENE
10	BIXLER 31-5	741	FNL	1795	FEL	40.52091	-104.45767	1.4	4721	NWNE
11	BIXLER 32-5	1790	FNL	1797	FEL	40.51803	-104.45768	1.4	4715	SWNE
18	PEIKER 31-6	654	FNL	1977	FEL	40.52100	-104.47739	2.3	4732	NWNE
19	PEIKER 41-6	660	FNL	652	FEL	40.52101	-104.47263	2.0	4744	NENE
20	PEIKER 42-6	1994	FNL	649	FEL	40.51735	-104.47263	2.0	4729	SENE
21	PEIKER 32-6	1991	FNL	1970	FEL	40.51733	-104.47738	1.7	4707	SWNE
32	DILKA 6-52	1280	FNL	1438	FWL	40.51923	-104.48361	1.5	4722	NENW
33	DILKA 22-6	2100	FNL	1973	FWL	40.51700	-104.48169	1.6	4729	SENW
34	DILKA 21-6	672	FNL	2026	FWL	40.52092	-104.48150	1.9	4724	NENW
35	DILKA 6-12	1968	FNL	503	FWL	40.51731	-104.48698	2.6	4736	SWNW
36	DILKA 6-11	857	FNL	476	FWL	40.52036	-104.48707	1.9	4724	NWNW
37	FOSS - USX AA 5-19	1305	FNL	1307	FWL	40.51930	-104.46559	1.6	4717	NWNW
38	FOSS USX AA 05-06	2051	FNL	1936	FWL	40.51727	-104.46333	1.7	4709	SENW
41	FOSS - USX AA 5-5	1988	FNL	667	FWL	40.51740	-104.46789	2.1	4713	SWNW
74	FOSS USX AA 5-4	625	FNL	602	FWL	40.52114	-104.46812	2.1	4737	NWNW
75	FOSS USX AA 5-3	681	FNL	1977	FWL	40.52103	-104.46317	3.0	4711	NENW