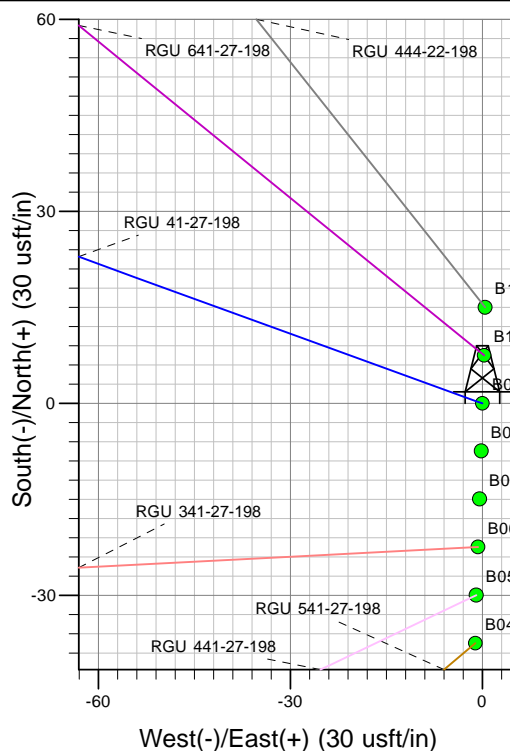
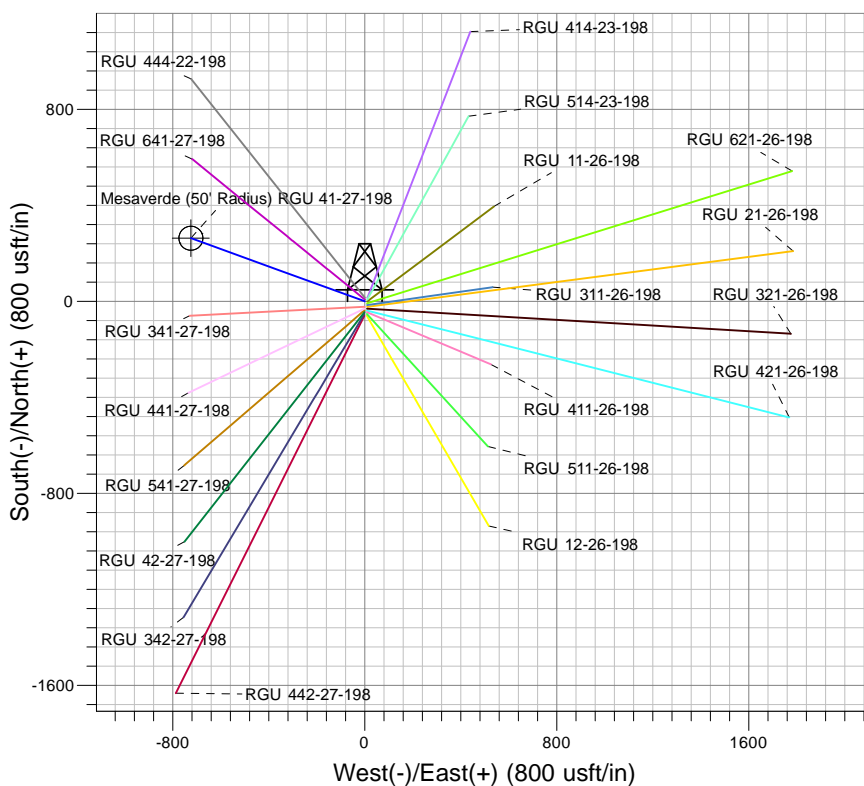
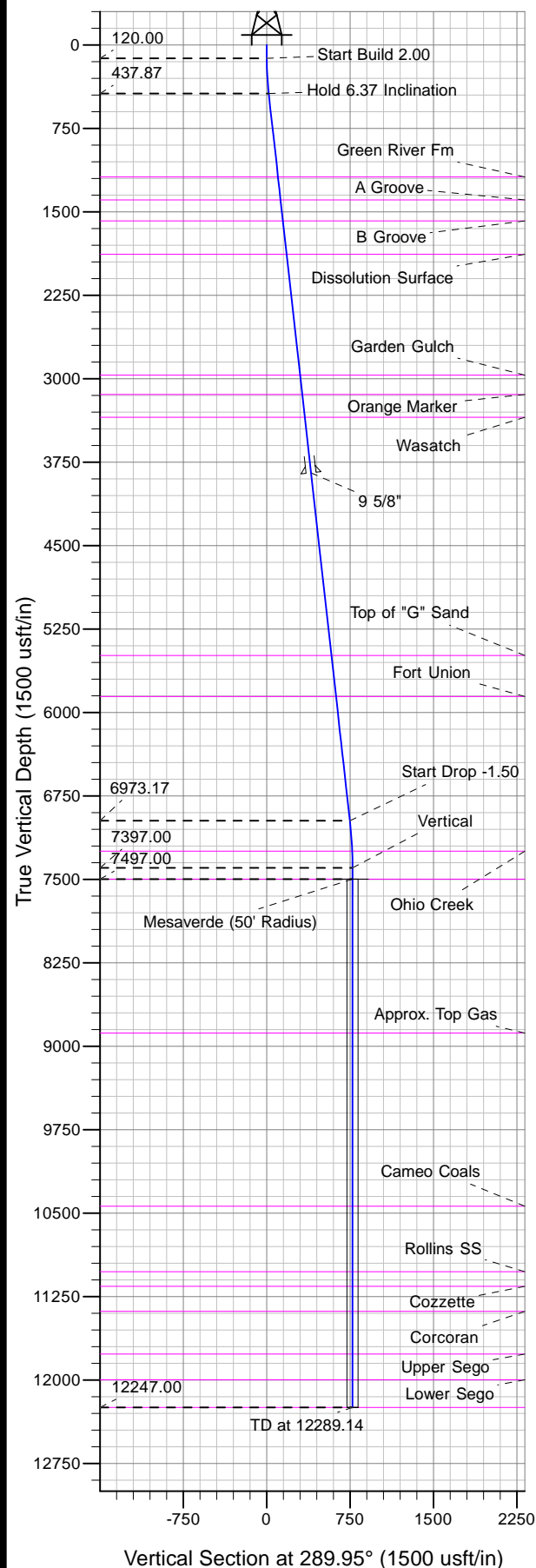




Well Name: RGU 41-27-198
Surface Location: RGU 11-26-198
North American Datum 1983 , US State Plane 1983, Colorado Central Zone
Ground Elevation: 6586.00

+N/-S	+E/-W	Northing	Easting	Latitude	Longitude	Slot
0.00	0.00	1780062.80	2195663.10	39.94022	-108.36881	B09

KELLY BUSHING @ 6607.00usft (Cyclone 29 (21' RKB) kjs)



Project: RG 26-01S-098W
Site: RGU 11-26-198
Well: RGU 41-27-198
Design #2 05Nov13 kjs

Azimuths to True North
Magnetic North: 10.31°
Magnetic Field
Strength: 52229.0snT
Dip Angle: 65.98°
Date: 7/9/2013
Model: IGRF2010

ANNOTATIONS

TVD	MD	Inc	Azi	+N/-S	+E/-W	Vsect	Departure	Annotation
120.00	120.00	0.00	0.00	0.00	0.00	0.00	0.00	Start Build 2.00
437.87	438.53	6.37	289.95	6.03	-16.63	17.69	17.69	Hold 6.37 Inclination
6973.17	7014.43	6.37	289.95	254.95	-702.51	747.34	747.34	Start Drop -1.50
7397.00	7439.14	0.00	0.00	263.00	-724.68	770.93	770.93	Vertical
7497.00	7539.14	0.00	0.00	263.00	-724.68	770.93	770.93	Mesaverde
12247.00	12289.14	0.00	0.00	263.00	-724.68	770.93	770.93	TD at 12289.14