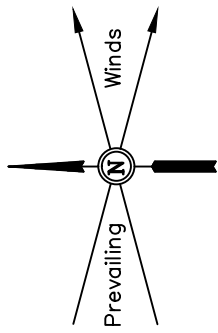


ConocoPhillips Company

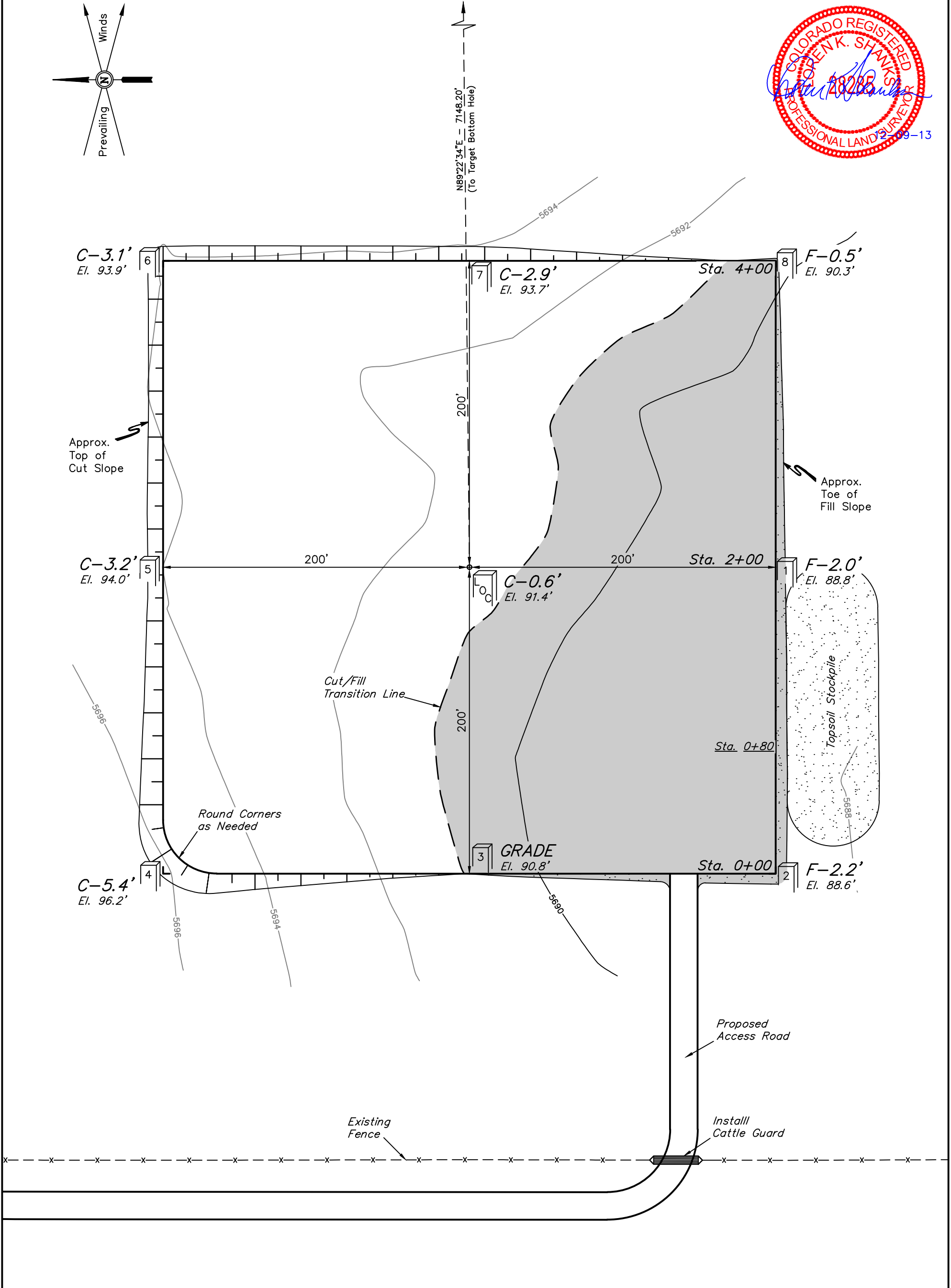
CONSTRUCTION LAYOUT FOR
PROSPER FARMS #4-65 13-14 1H
SECTION 14, T4S, R65W, 6th P.M.
2165' FNL 350' FWL

FIGURE #1

SCALE: 1" = 60'
DATE: 08-17-13
DRAWN BY: B.D.H.
REV: 10-29-13 J.W.
REV: 12-09-13 J.W.



N89°22'34"E = 7148.20'
(To Target Bottom Hole)



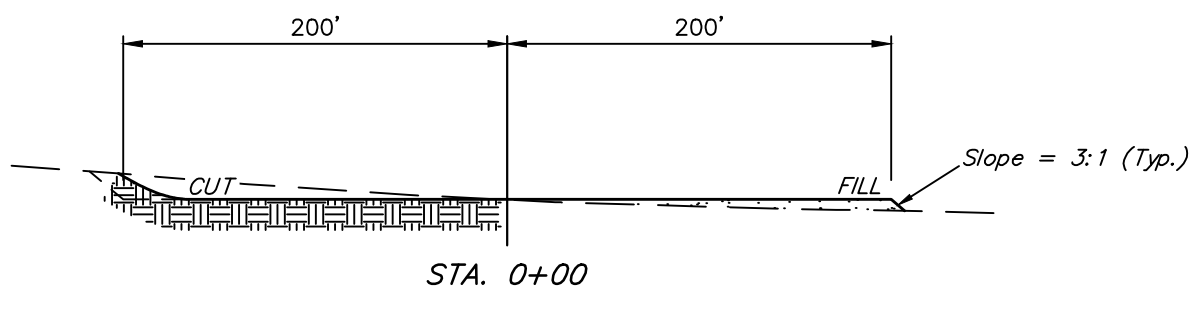
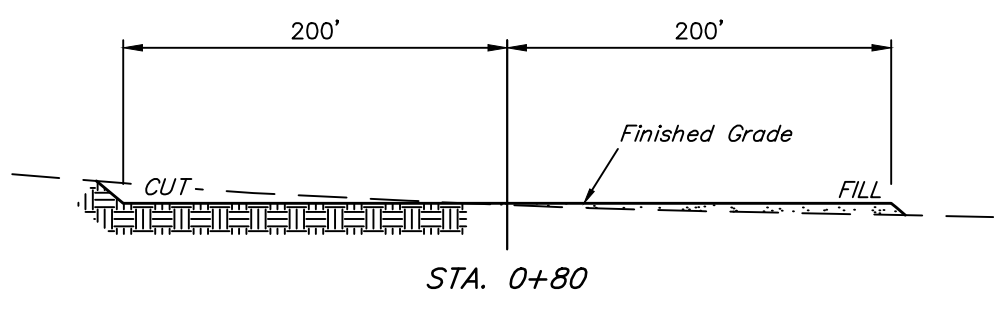
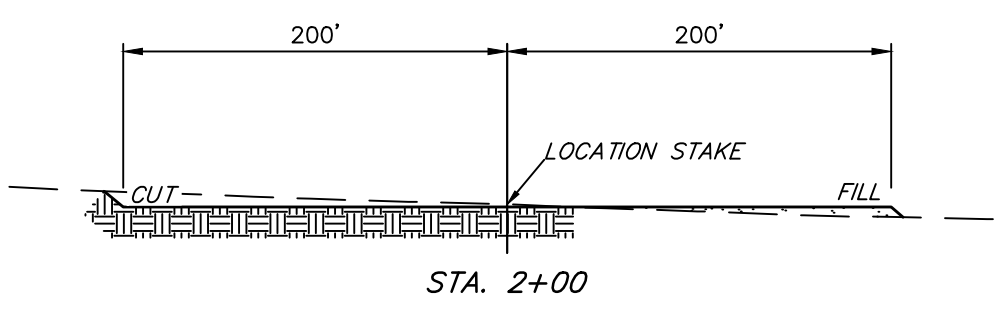
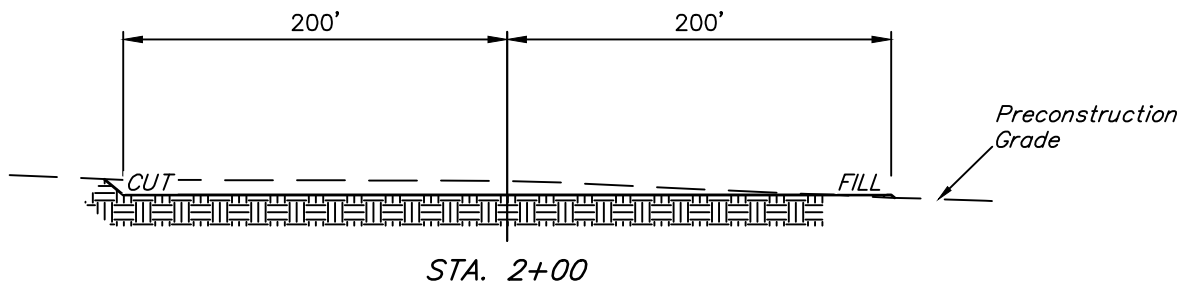
Elev. Ungraded Ground At Loc. Stake = 5691.4'
FINISHED GRADE ELEV. AT LOC. STAKE = 5690.8'

UINTAH ENGINEERING & LAND SURVEYING
85 So. 200 East * Vernal, Utah 84078 * (435) 789-1017

ConocoPhillips Company
CONSTRUCTION LAYOUT CROSS SECTIONS FOR
PROSPER FARMS #4-65 13-14 1H
SECTION 14, T4S, R65W, 6th P.M.
2165' FNL 350' FWL

FIGURE #2

1" = 40'
 X-Section Scale
 1" = 100'
 DATE: 08-17-13
 DRAWN BY: B.D.H.
 REV: 12-09-13 J.W.



NOTE:
 Topsoil should not be Stripped Below Finished Grade on Substructure Area.

* NOTE:
 FILL QUANTITY INCLUDES 10% FOR COMPACTION

APPROXIMATE YARDAGES

(6") Topsoil Stripping	=	3,180 Cu. Yds.
Remaining Location	=	4,740 Cu. Yds.
TOTAL CUT	=	7,920 CU. YDS.
FILL	=	4,740 CU. YDS.

EXCESS MATERIAL	=	3,180 Cu. Yds.
Topsoil	=	3,180 Cu. Yds.
EXCESS UNBALANCE	=	0 Cu. Yds.
(After Interim Rehabilitation)		

APPROXIMATE ACREAGE	
WELL SITE DISTURBANCE	= ± 4.181 ACRES
ACCESS ROAD DISTURBANCE	= ± 22.408 ACRES
TOTAL	= ± 26.599 ACRES

UINTAH ENGINEERING & LAND SURVEYING
 85 So. 200 East * Vernal, Utah 84078 * (435) 789-1017