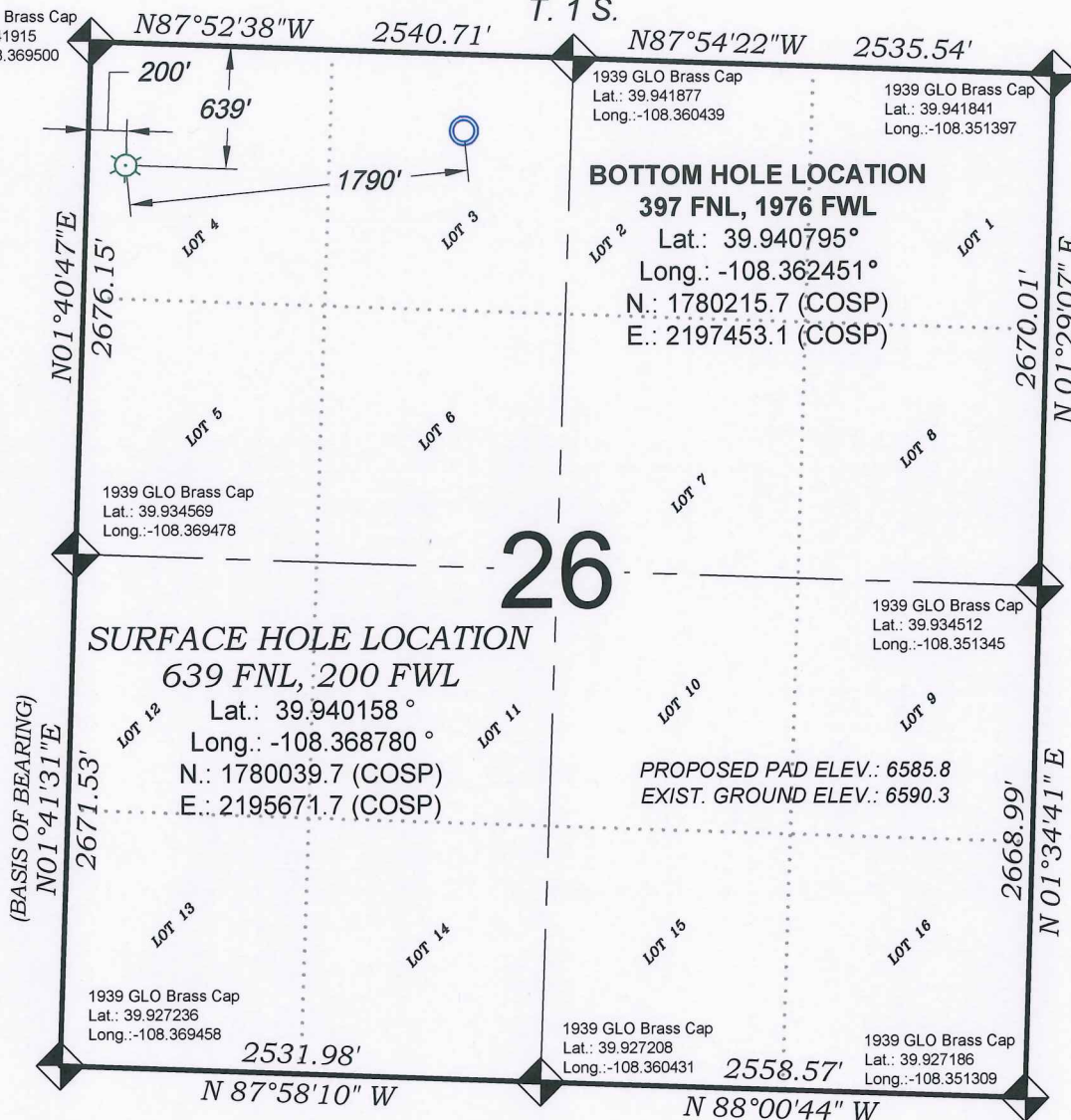


# Federal RGU 21-26-198

T. 1 S.

1939 GLO Brass Cap  
Lat.: 39.941915  
Long.: -108.369500



0 500 1000  
GRAPHIC SCALE IN FEET  
1 INCH = 1000 FEET

THERE ARE NO VISIBLE  
IMPROVEMENTS WITHIN 400'  
OF THIS LOCATION

## SURVEYORS STATEMENT

I, MICHAEL J. LANGHORNE, A REGISTERED LAND SURVEYOR IN THE STATE OF COLORADO DO HEREBY CERTIFY THAT THE SURVEY SHOWN HEREON WAS PREPARED UNDER MY DIRECT SUPERVISION AND HAS BEEN STAKED ON THE GROUND AS SHOWN ON THE PLAT AND CHECKING THAT THIS MAP IS A TRUE REPRESENTATION THEREOF.

*Michael J. Langhorne*

MICHAEL J. LANGHORNE, COLORADO REGISTRATION NO. 36572  
FOR AND ON BEHALF OF  
BOOKCLIFF SURVEY SERVICES, INC.

## REFERENCES

- 1) DEPENDENT RESURVEY and Subdivision of Certain Sections T. 1 S., R. 98 W., 6<sup>th</sup> P.M (BLM PLAT)
- 2) U.S.G.S. QUAD: Square S Ranch, CO

REVISED: 8/15/13

136 East Third Street  
Rifle, Colorado  
81650 Ph. (970)  
625-2720 Fax (970)  
625-2773

**BOOKCLIFF**  
Survey Services, Inc.

SURVEY DATE: 2/14/13  
MAP DATE: 7/25/13  
SCALE: 1" = 1000'  
PLAT: 1 of 1  
PROJECT: Highlands

## - LEGEND -

FIELD LOCATED SECTION  
MONUMENTS AS DESCRIBED



FIELD SURVEYED  
WELL LOCATION



CALCULATED BOTTOM  
HOLE LOCATION



CALCULATED SECTION  
CORNER LOCATION



## NOTES

- 1) ELEVATIONS BASED ON N.A.V.D. 1988 PUBLISHED COORDINATES.
- 2) LATITUDES AND LONGITUDES ARE BASE ON NAD 83, PUBLISHED COORDINATES.
- 3) STATE PLANE COORDINATES ARE BASED ON COLORADO CENTRAL ZONE, U.S. SURVEY FEET.
- 4) ELEVATION MASK SET TO 15°
- 5) GPS OPERATOR J. KIRKPATRICK, OBSERVED A PDOP OF 2.7 FOR SURVEY POINT NUMBER 323.
- 6) SURFACE AND BOTTOM HOLE LOCATIONS ARE MEASURED 90° FROM SECTION LINES.

**WELL LOCATION PLAT Prepared for:**  
**WPXENERGY.**

WPX Energy Rocky Mountain, LLC

NW1/4 NW1/4, SECTION 26  
T. 1 S., R. 98 W. of the 6th. P.M.  
Rio BLANCO COUNTY, COLORADO