

T8N, R92W, 6th P.M.

AXIA ENERGY

Well location, BULLDOG #23-41H-892 (SURFACE LOCATION), located as shown in the NE 1/4 NE 1/4 of Section 23, T8N, R92W, 6th P.M., Moffat County, Colorado.

BASIS OF ELEVATION

SPOT ELEVATION LOCATED AT THE SOUTHWEST CORNER OF SECTION 15, T7N, R91W, 6th P.M. TAKEN FROM THE CRAIG QUADRANGLE, COLORADO, MOFFAT COUNTY, 7.5 MINUTE QUAD (TOPOGRAPHIC MAP) PUBLISHED BY THE UNITED STATES DEPARTMENT OF THE INTERIOR, GEOLOGICAL SURVEY. SAID ELEVATION IS MARKED AS BEING 6672 FEET.

BASIS OF BEARINGS

BASIS OF BEARINGS IS A G.P.S. OBSERVATION.

1991 B.L.M. Alum. Cap.
0.2' High,
Lat: 40.623019°
Long: 107.696386°

NOTE:
THE PROPOSED BOTTOM HOLE FOR THIS WELL IS LOCATED IN THE NE 1/4 SE 1/4 OF SECTION 26, T8N, R92W, 6th P.M. AT 1945' FSL 660' FEL IT BEARS S03°07'50"W 7327.16' FROM THE PROPOSED WELL HEAD.

23

BULLDOG #23-41H-892
Elev. Ungraded Ground = 6925'

N89°58'21"W - 5280.64' (Meas.)

2013 UE#Alum. Cap
Flush W/Ground
#17492
Lat: 40.637511°
Long: 107.696364°

1304'

265'

N00°05'46"E

2641.92' (Meas.)

1992 B.L.M. Alum. Cap.
0.8' High,
Lat: 40.630269°
Long: 107.677353°

N00°02'22"E - 2641.31' (Meas.)

S03°07'50"W
7327.16'

2002 B.L.M. Alum. Cap.
0.7' High,
Lat: 40.623022°
Long: 107.677350°

N89°57'35"W - 2643.09' (Meas.)

N89°57'51"W - 2643.43' (Meas.)

2002 B.L.M. Alum. Cap.
0.8' High,
Lat: 40.623019°
Long: 107.686869°

Target Bottom Hole

PDOP = 1.5

LEGEND:

— = 90° SYMBOL

● = PROPOSED WELL HEAD.

▲ = SECTION CORNERS LOCATED.

NAD 83 (SURFACE LOCATION)

LATITUDE = 40°38'02.19" (40.633942)
LONGITUDE = 107°40'41.89" (107.678303)

NAD 27 (SURFACE LOCATION)

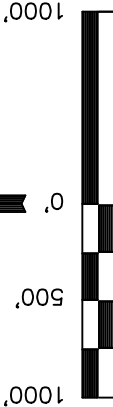
LATITUDE = 40°38'02.30" (40.633972)
LONGITUDE = 107°40'39.64" (107.677678)

STATE PLANE NAD 83

N: 1481212.80 E: 2395474.42

STATE PLANE NAD 27

N: 481211.41 E: 1395632.20



SCALE

CERTIFICATE

THIS IS TO CERTIFY THAT THE ABOVE PLAT WAS PREPARED FROM FIELD NOTES OF ACTUAL SURVEYS MADE BY ME OR UNDER MY SUPERVISION AND THAT THE SAME ARE TRUE AND CORRECT TO THE BEST OF MY KNOWLEDGE AND BELIEF.

REGISTERED LAND SURVEYOR
STATE OF COLORADO
REGISTRATION NO. 17492
EXPIRATION DATE 04-12-13

UNTAAH ENGINEERING & LAND SURVEYING

85 SOUTH 200 EAST - VERNAL, UTAH 84078

(435) 789-1017

SCALE 1" = 1000' DATE SURVEYED: 04-05-13 DATE DRAWN: 04-12-13

PARTY G.M. C.I. M.D. REFERENCES G.L.O. PLAT

WEATHER COOL FILE AXIA ENERGY

T8N, R92W, 6th P.M.

AXIA ENERGY

Surface Location

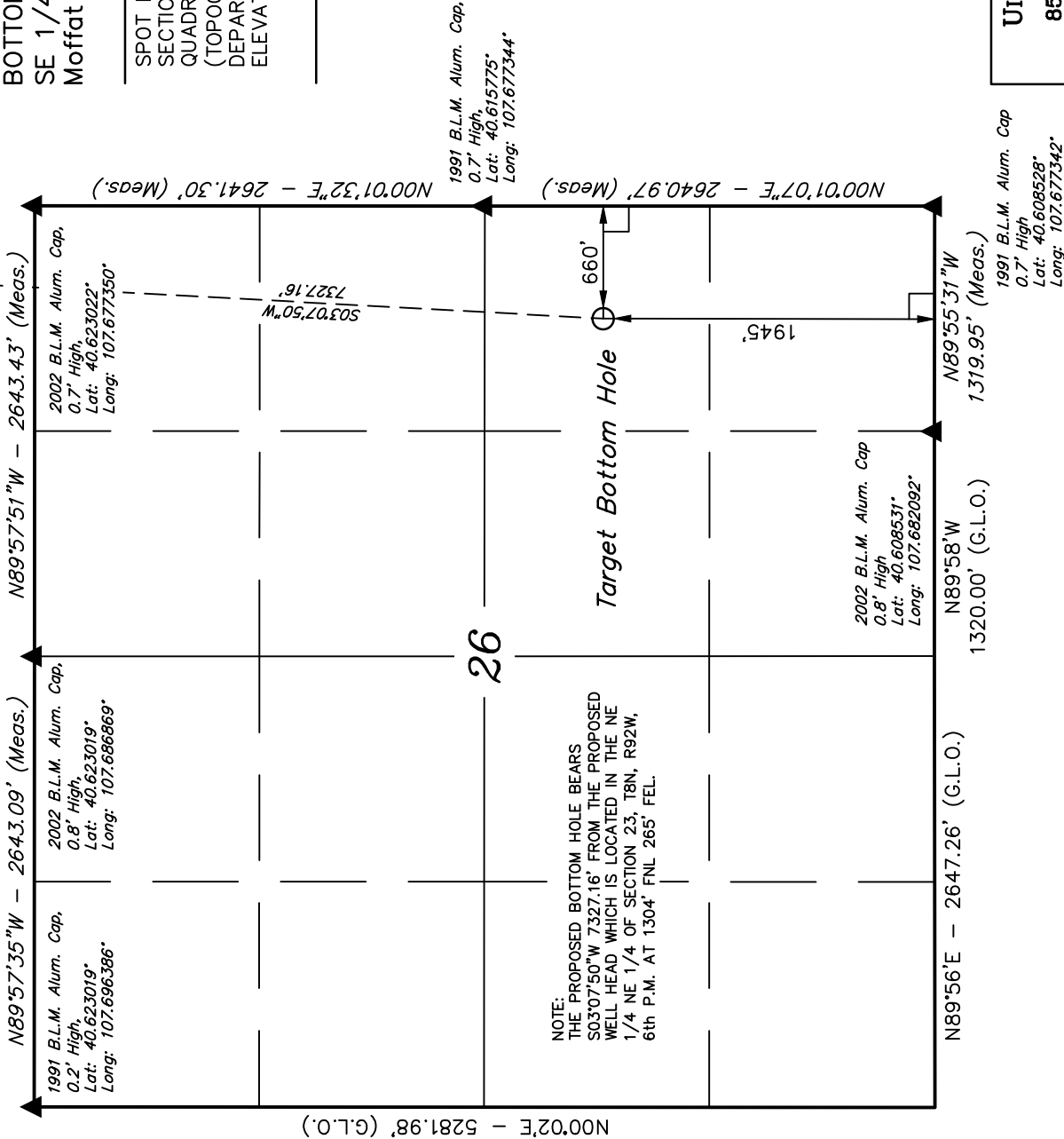
Well location, BULLDOG #23-41H-892 (TARGET BOTTOM HOLE), located as shown in the NE 1/4 SE 1/4 of Section 26, T8N, R92W, 6th P.M., Moffat County, Colorado.

BASIS OF ELEVATION

SPOT ELEVATION LOCATED AT THE SOUTHWEST CORNER OF SECTION 15, T7N, R91W, 6th P.M. TAKEN FROM THE CRAIG QUADRANGLE, COLORADO, MOFFAT COUNTY, 7.5 MINUTE QUAD (TOPOGRAPHIC MAP) PUBLISHED BY THE UNITED STATES DEPARTMENT OF THE INTERIOR, GEOLOGICAL SURVEY. SAID ELEVATION IS MARKED AS BEING 6672 FEET.

BASIS OF BEARINGS

BASIS OF BEARINGS IS A G.P.S. OBSERVATION.

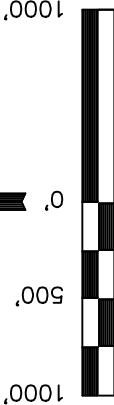


LEGEND:

— = 90° SYMBOL

● = PROPOSED WELL HEAD.

▲ = SECTION CORNERS LOCATED.



SCALE

CERTIFICATE

THIS IS TO CERTIFY THAT THE ABOVE PLAT WAS PREPARED FROM FIELD NOTES OF ACTUAL SURVEYS MADE BY ME OR UNDER MY SUPERVISION AND THAT THE SAME ARE TRUE AND CORRECT TO THE BEST OF MY KNOWLEDGE AND BELIEF.

REGISTERED LAND SURVEYOR
STATE OF COLORADO
REGISTRATION NO. 17492
EXPIRATION DATE 04-12-13

UNTAH ENGINEERING & LAND SURVEYING
85 SOUTH 200 EAST - VERNAL, UTAH 84078
(435) 789-1017

NAD 83 (TARGET BOTTOM HOLE)
LATITUDE = 40°36'49.92" (40.613867)
LONGITUDE = 107°40'46.99" (107.679719)
NAD 27 (TARGET BOTTOM HOLE)
LATITUDE = 40°36'50.03" (40.613897)
LONGITUDE = 107°40'44.74" (107.679094)
STATE PLANE NAD 83
N: 1475910.56 E: 2394901.31
STATE PLANE NAD 27
N: 473909.22 E: 1395059.11