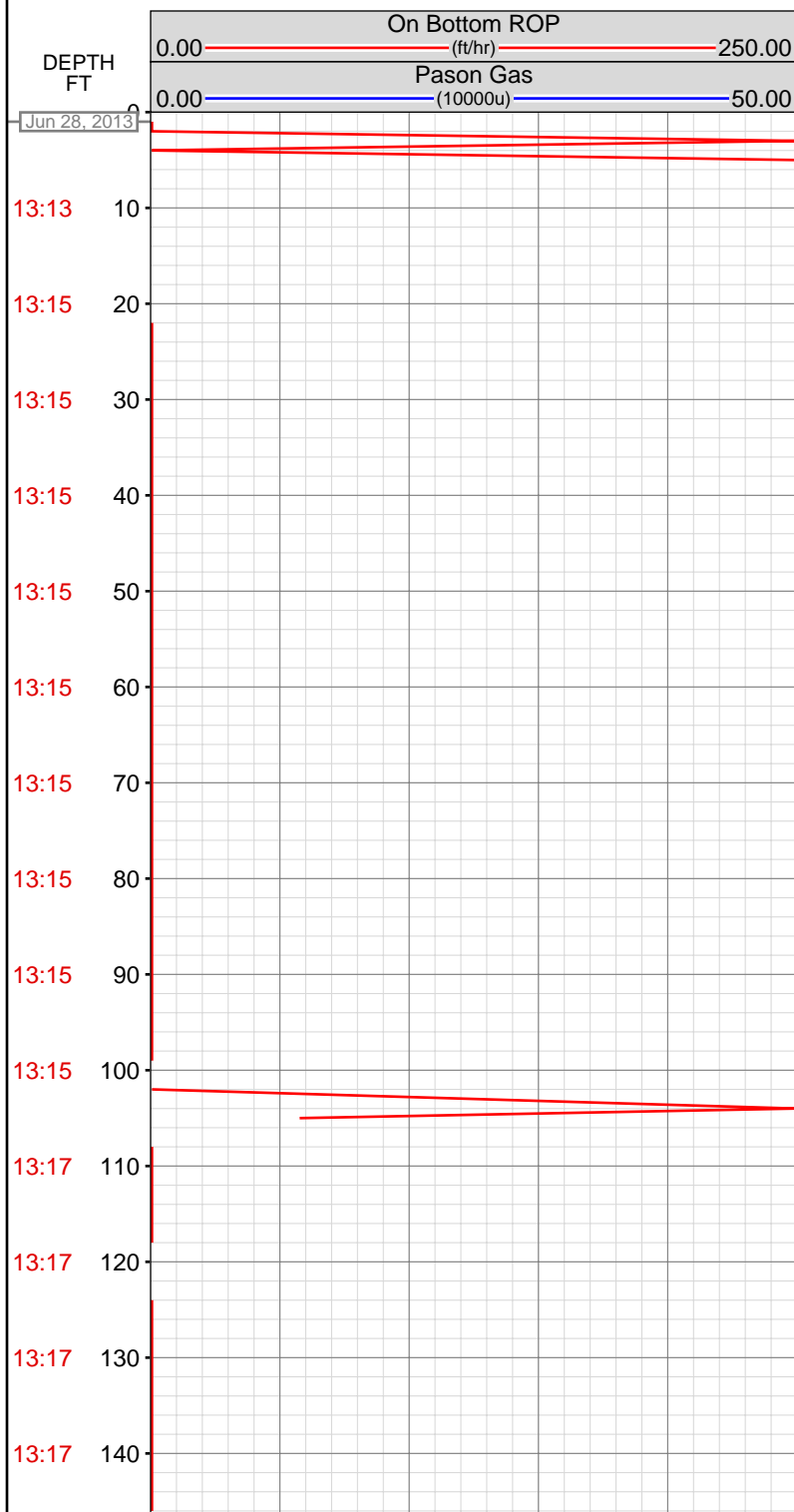


DataHub EDR Log

Tue Jul 02, 2013 13:40:14
Well Dossier 1372409565
Greg Veregin

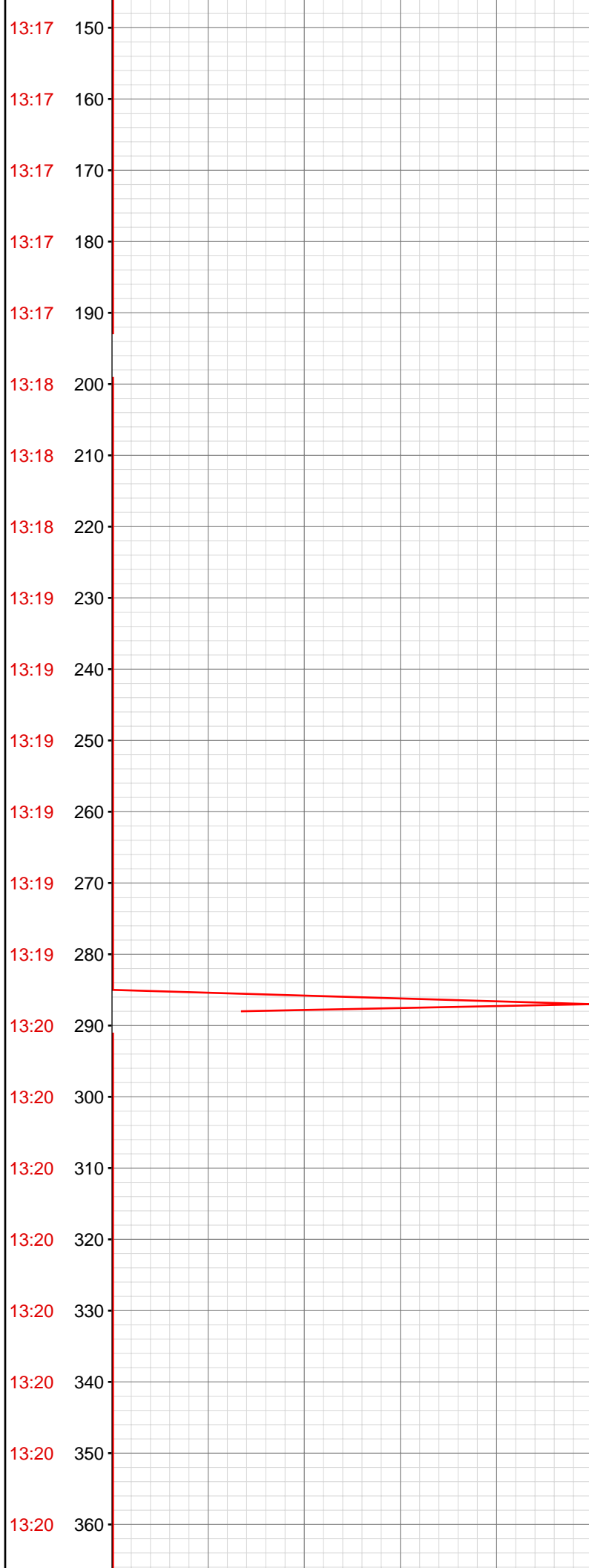
OPERATOR: EnCana Oil & Gas (USA), Inc.
WELL: HAGEN FEDERAL 22-4B
FIELD:
LOCATION: NE NW SEC 22, T007S, R95W6
COUNTRY: USA
RIG: Pat-UTI 303

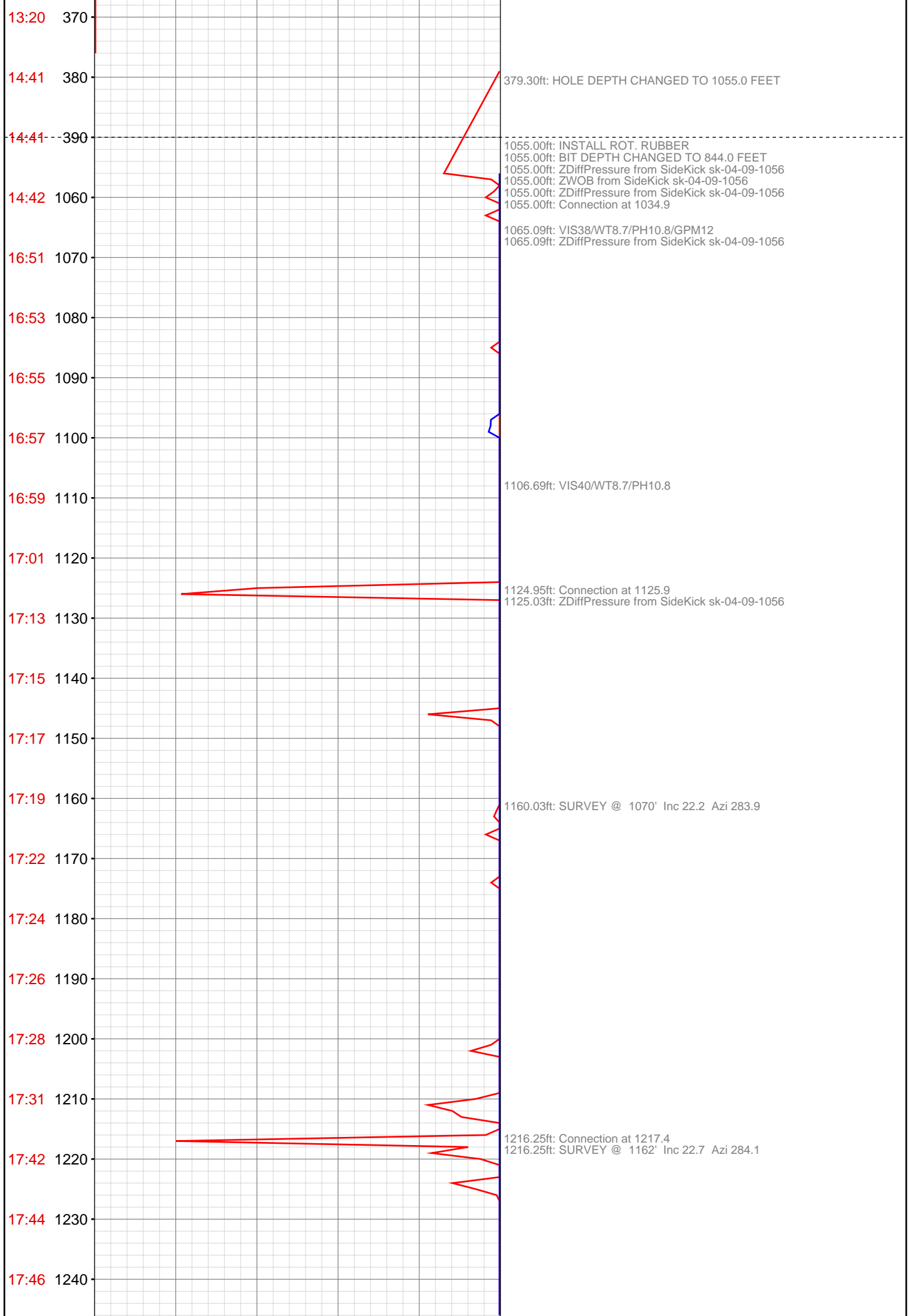
CONTRACTOR: Patterson-UTI Drilling Company
UNIQUE WELL ID: 05 045 22008
SPUD DATE: Jun 28, 2013 14:30
RELEASE DATE:

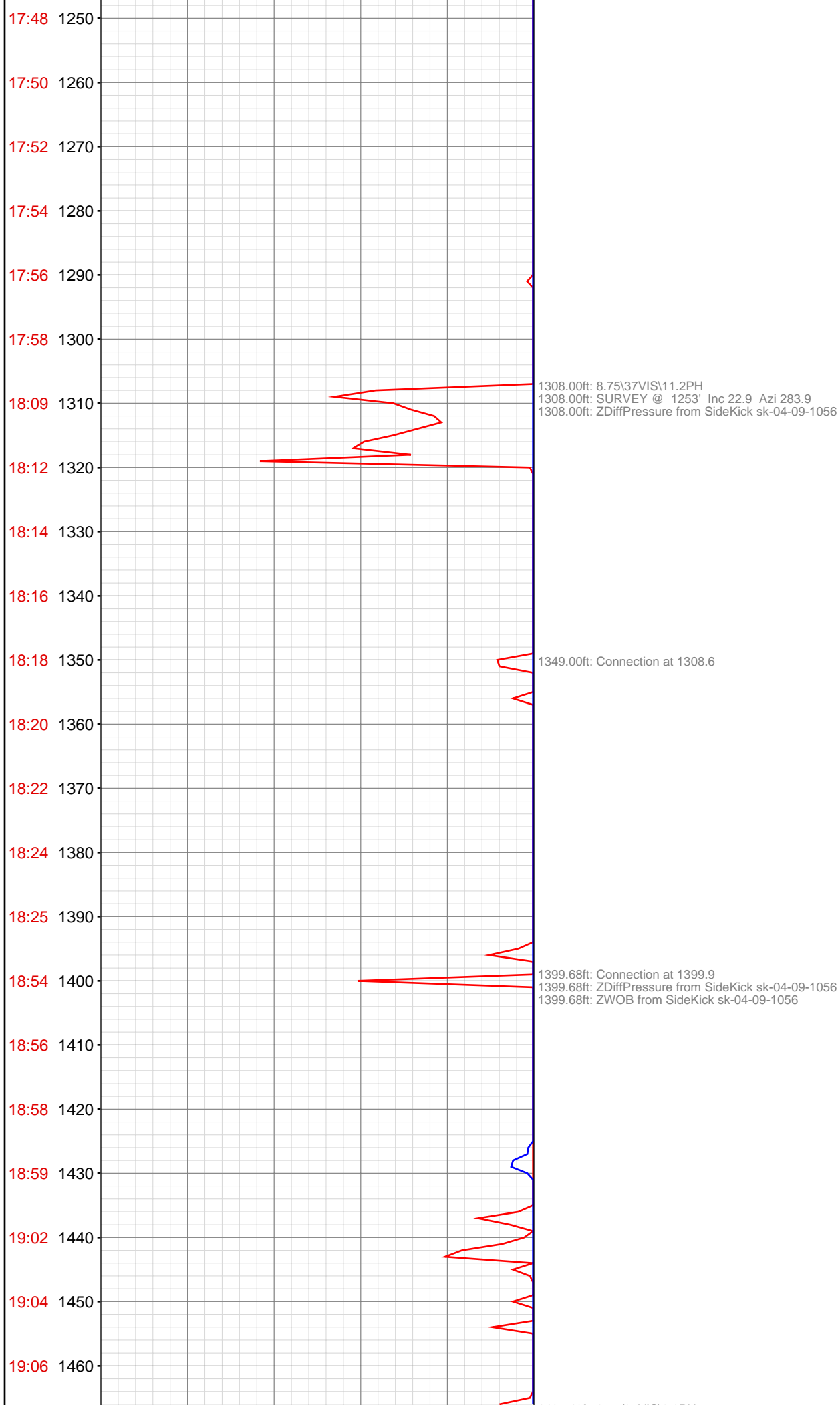


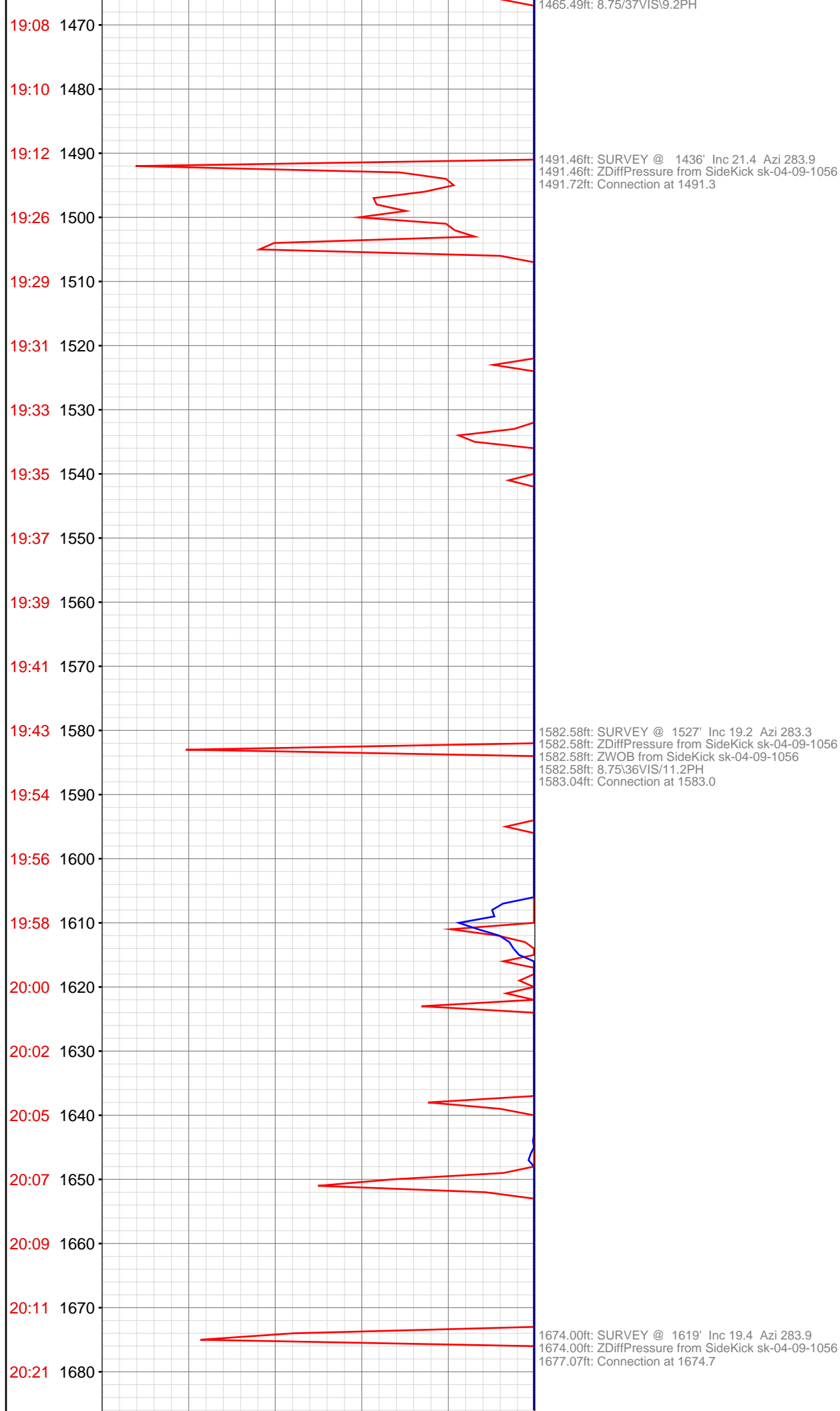
MEMOS

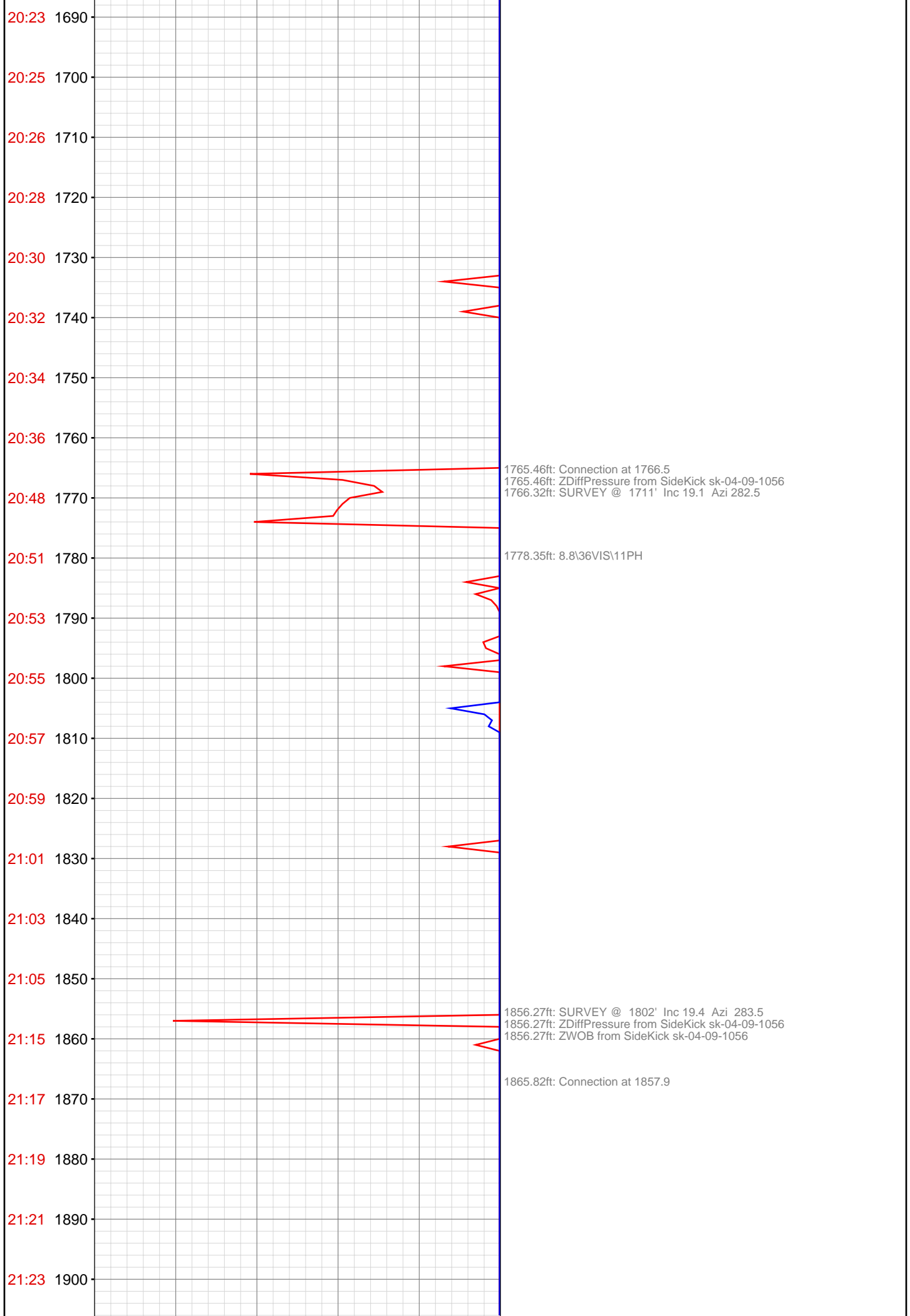
0.00ft: TRANSFER TO UPRIGHT
0.00ft: TRANSFER 200BBLs
0.00ft: VIS30/WT8.7
0.00ft: VIS52/WT8.7











21:25 1910

21:27 1920

21:29 1930

21:31 1940

21:42 1950

21:46 1960

21:48 1970

21:51 1980

21:52 1990

21:54 2000

21:56 2010

21:58 2020

22:00 2030

22:09 2040

22:11 2050

22:13 2060

22:15 2070

22:17 2080

22:19 2090

22:20 2100

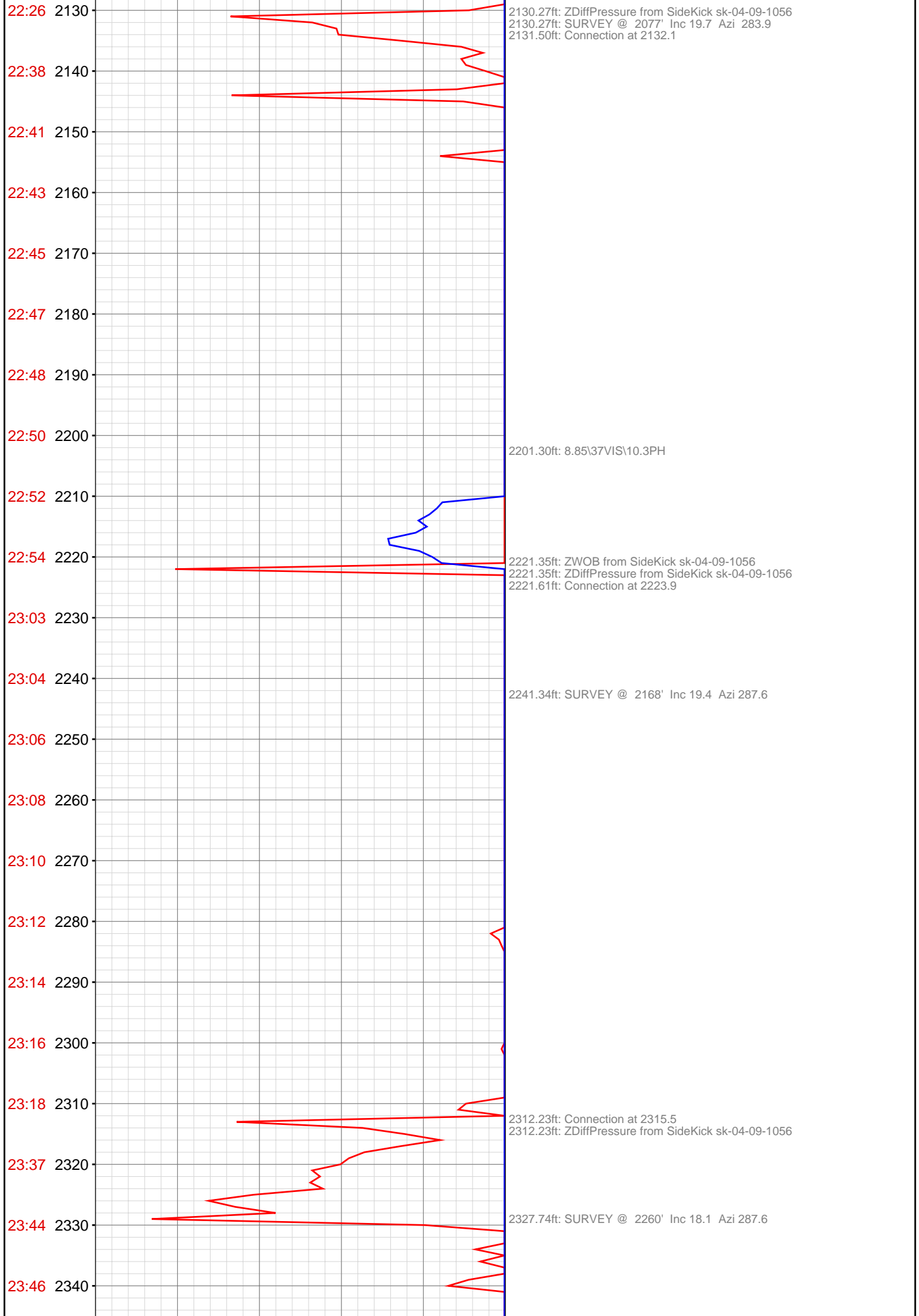
22:22 2110

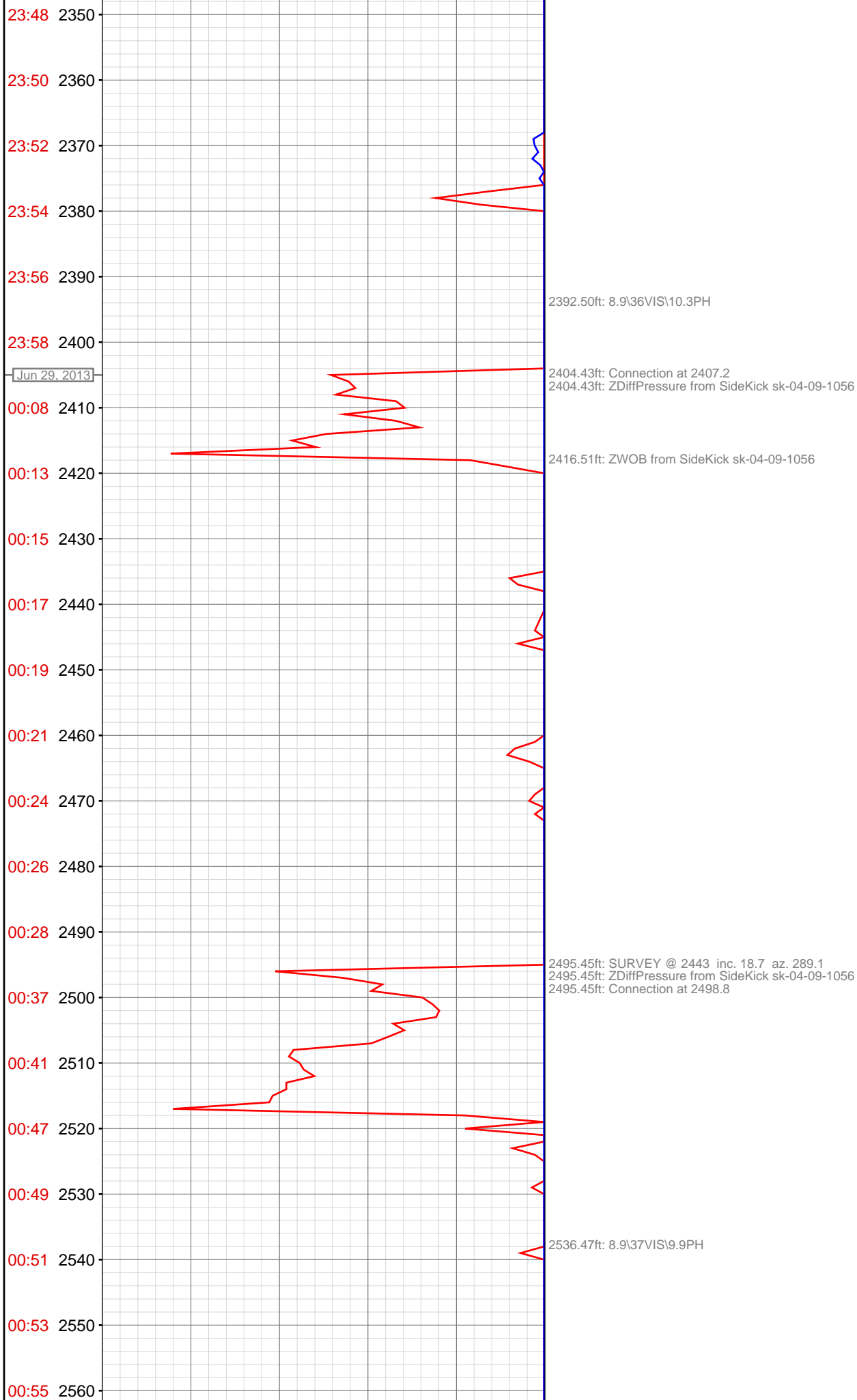
22:24 2120

1947.09ft: ZDiffPressure from SideKick sk-04-09-1056
1947.09ft: Connection at 1949.1
1950.31ft: SURVEY @ 1894' Inc 19.6 Azi 282.9

2002.78ft: 8.9\37VIS\11PH

2038.55ft: SURVEY @ 1986' Inc 19.8 Azi 284.7
2038.55ft: ZDiffPressure from SideKick sk-04-09-1056
2038.55ft: ZWOB from SideKick sk-04-09-1056
2040.34ft: Connection at 2041.0





00:57 2570

00:58 2580

01:07 2590 2586.81ft: Connection at 2590.3 SURVEY @ 2535 inc. 19.7 az. 287.5
2586.81ft: ZDiffPressure from SideKick sk-04-09-1056

01:10 2600

01:15 2610

01:17 2620

01:18 2630

01:20 2640

01:22 2650

01:24 2660

01:26 2670

01:35 2680 2677.93ft: SURVEY @ 2627 inc. 20.6 az. 286.0
2677.93ft: ZDiffPressure from SideKick sk-04-09-1056
2677.93ft: ZWOB from SideKick sk-04-09-1056
2680.48ft: Connection at 2682.1

01:37 2690

01:39 2700

01:41 2710

01:43 2720

01:45 2730

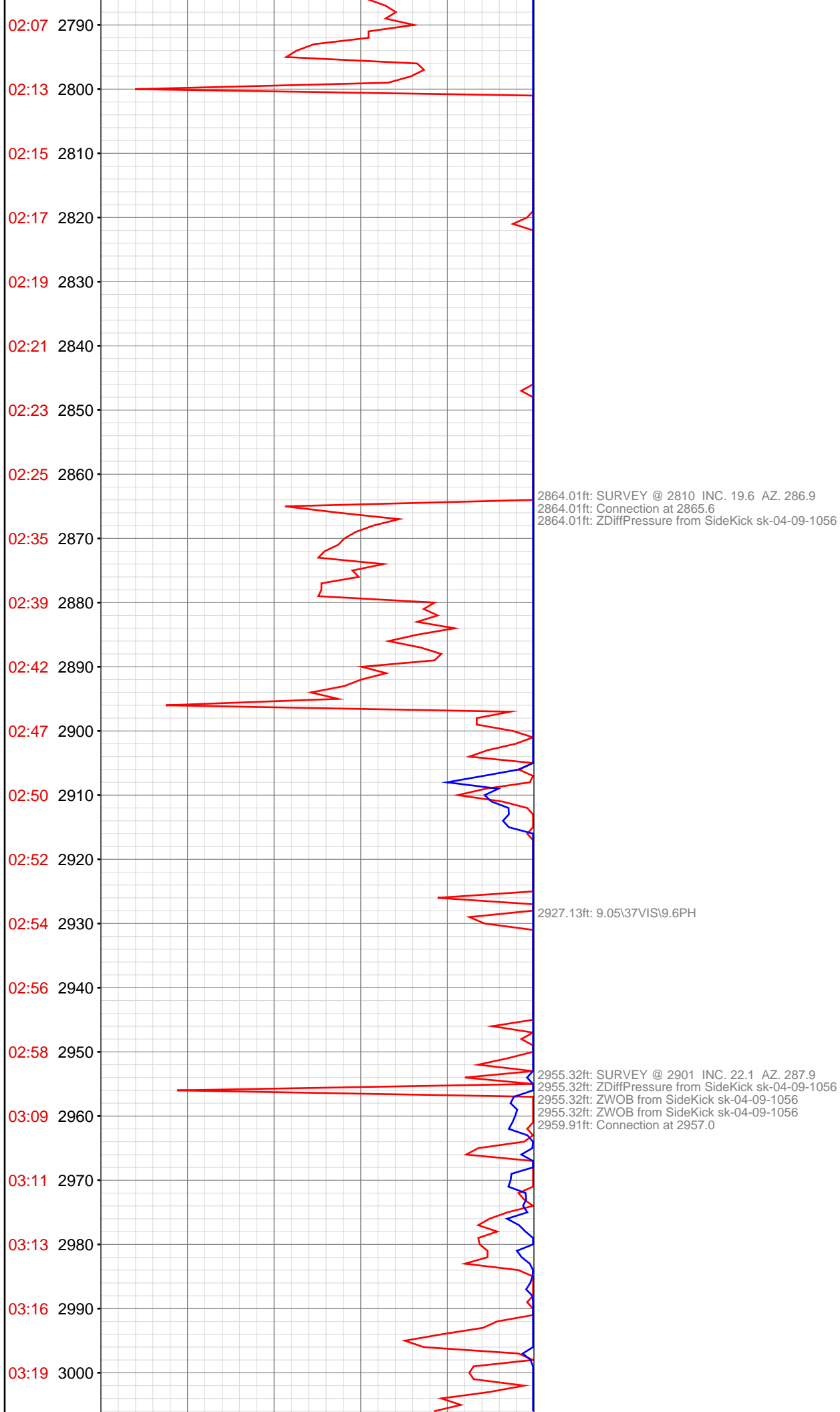
01:47 2740

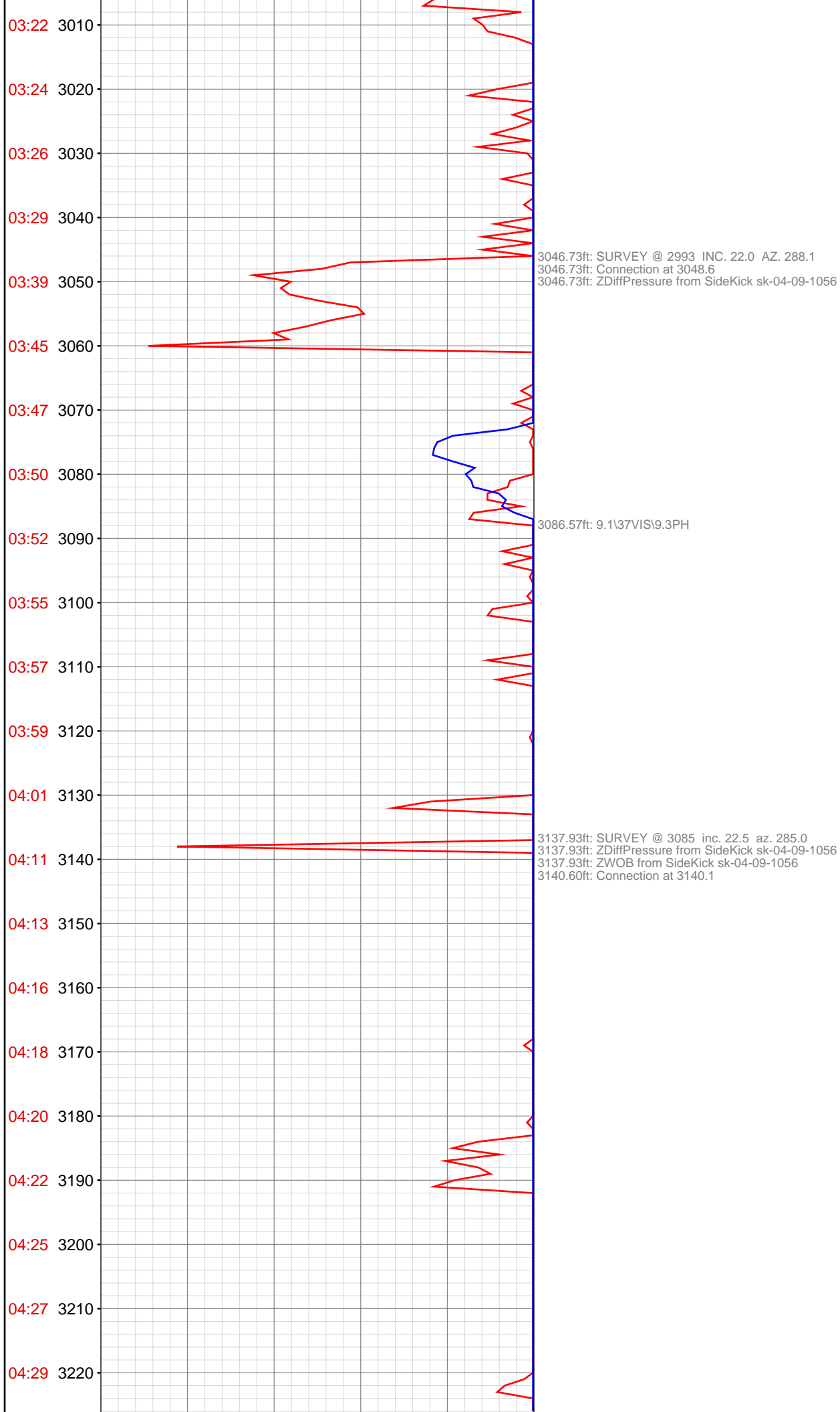
01:49 2750

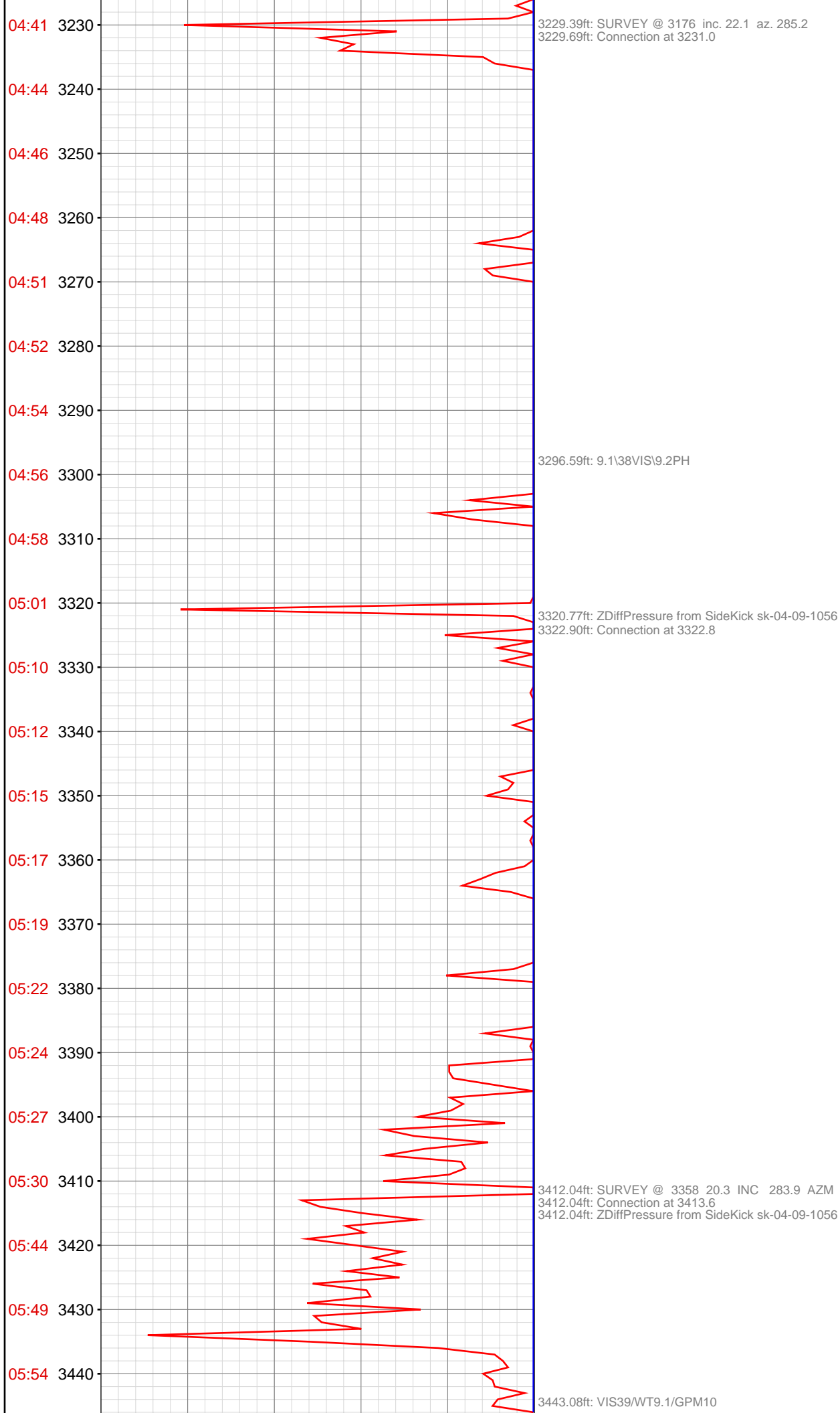
01:52 2760

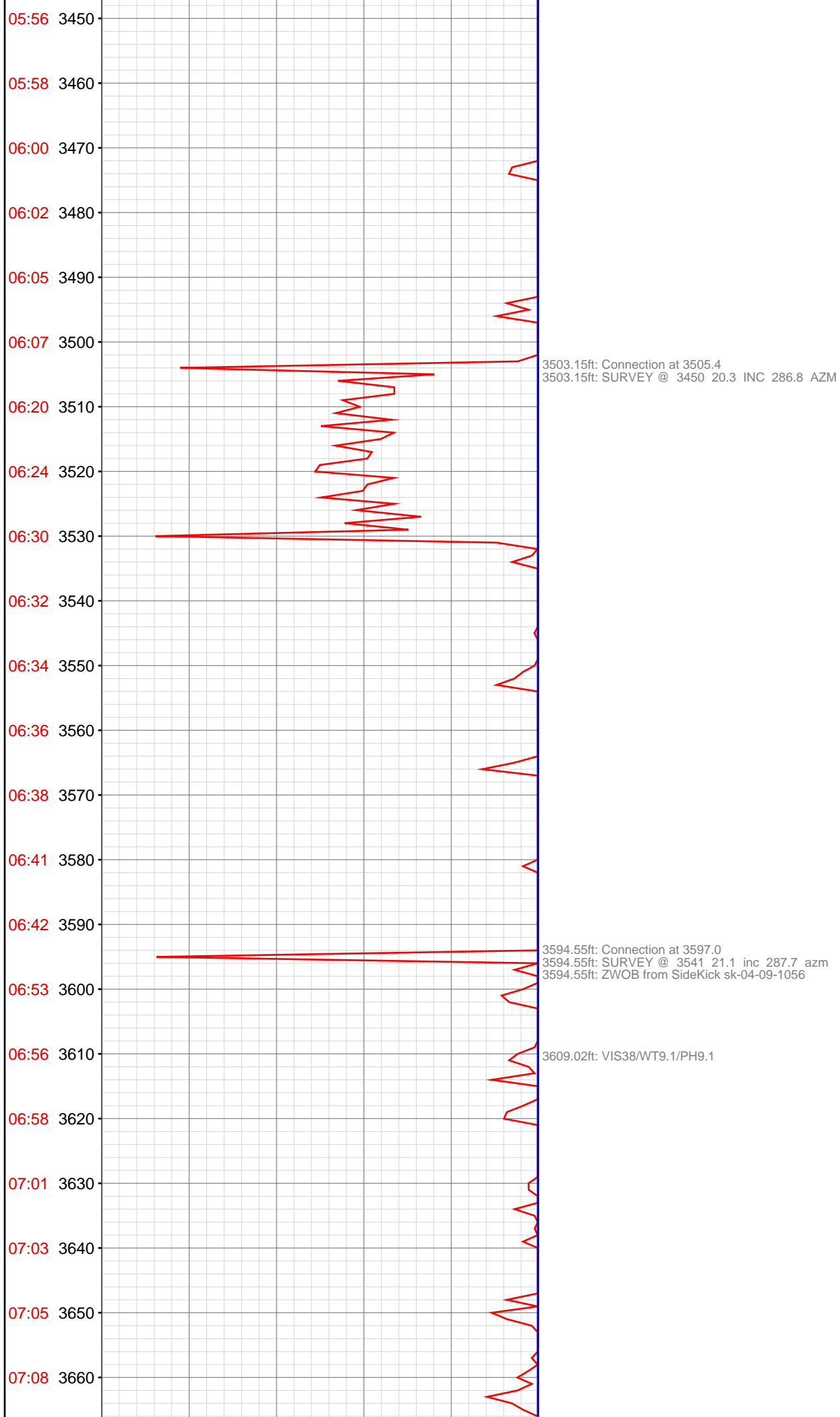
02:00 2770 2769.33ft: SURVEY @ 2718 INC. 19.2 AZ. 284.9
2769.33ft: Connection at 2773.9
2770.35ft: IN TALLY: HOLE DEPTH SET TO 2773.9

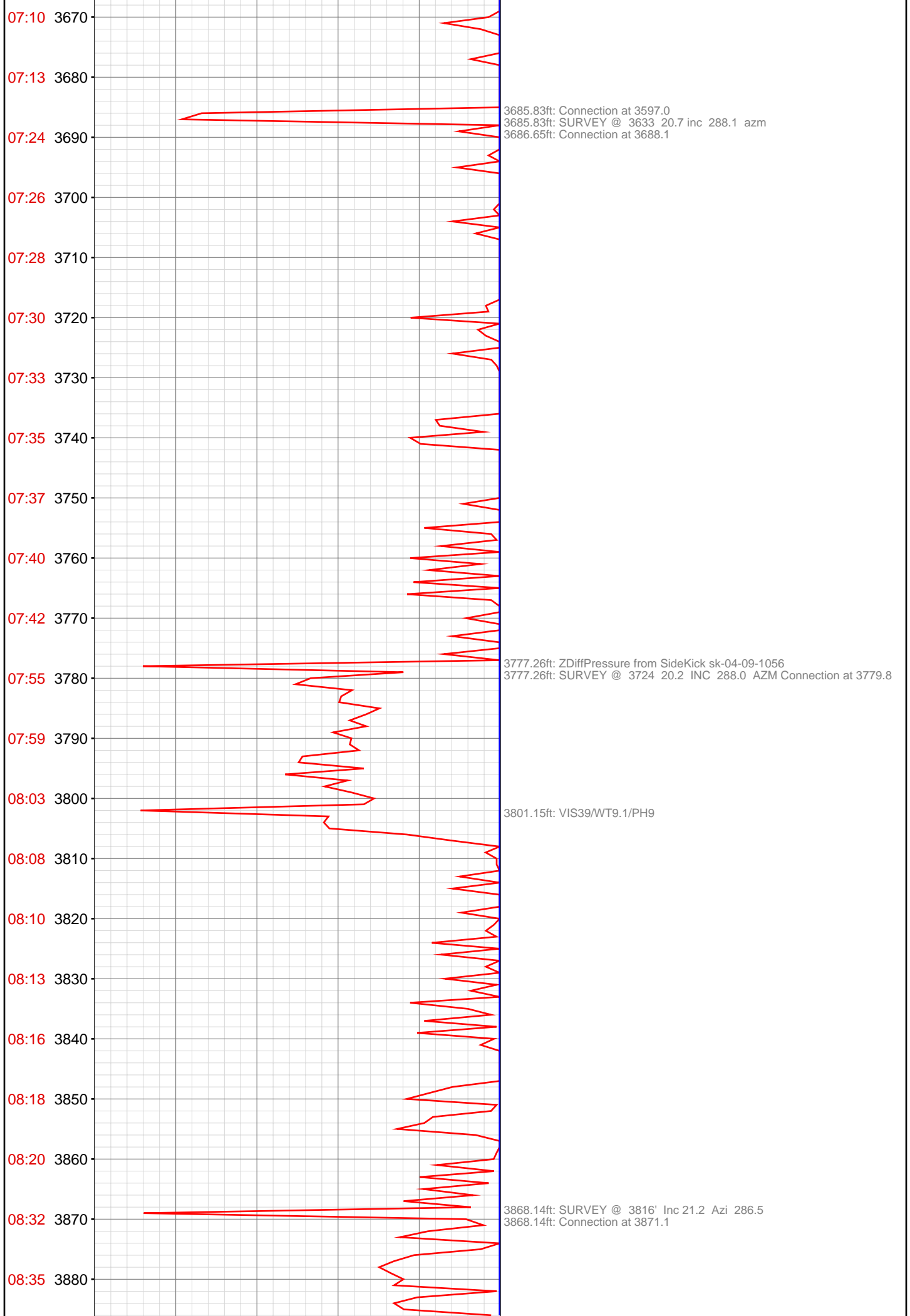
02:02 2780 2780.31ft: 9.0\36VIS\9.3PH

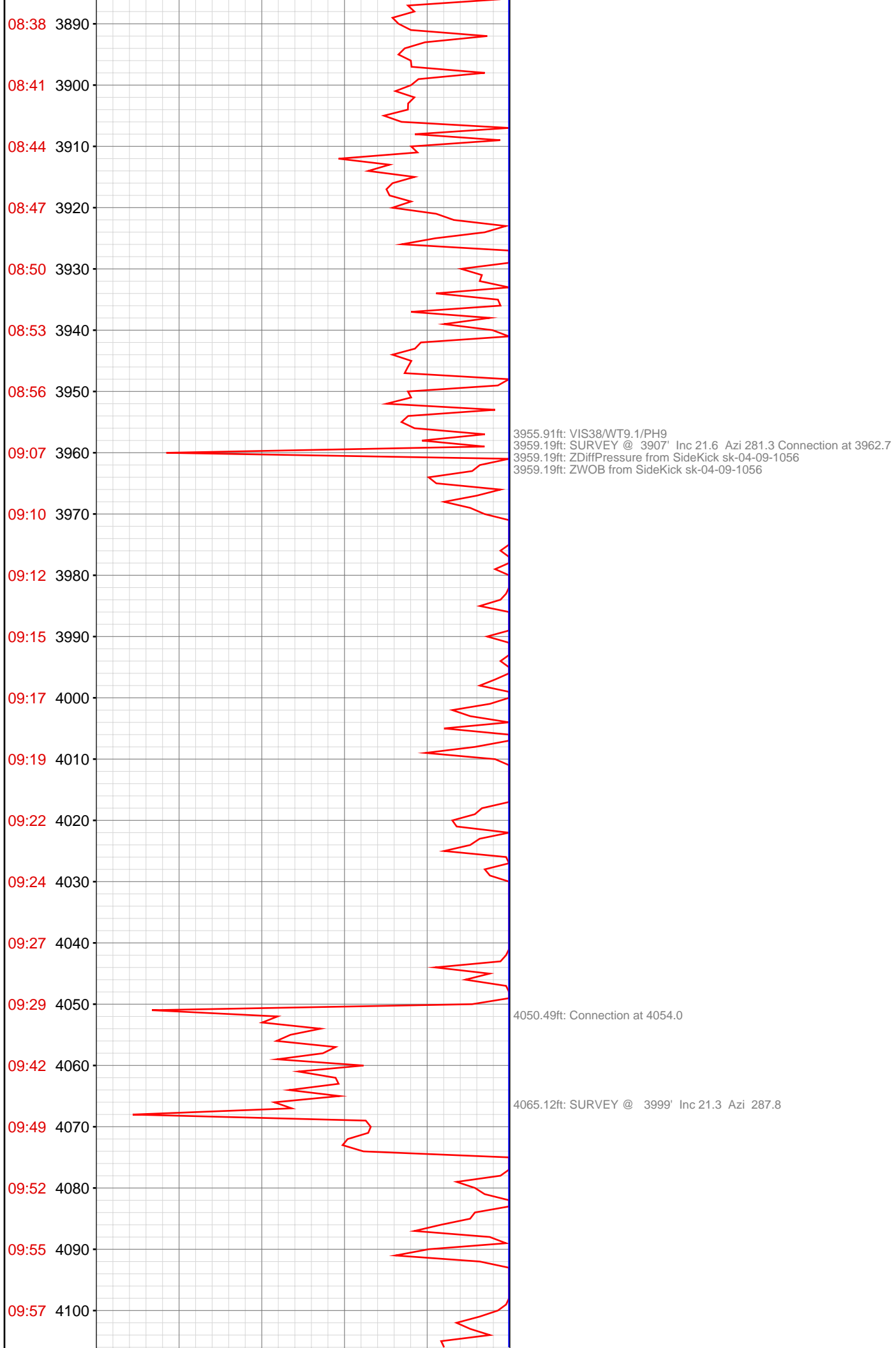


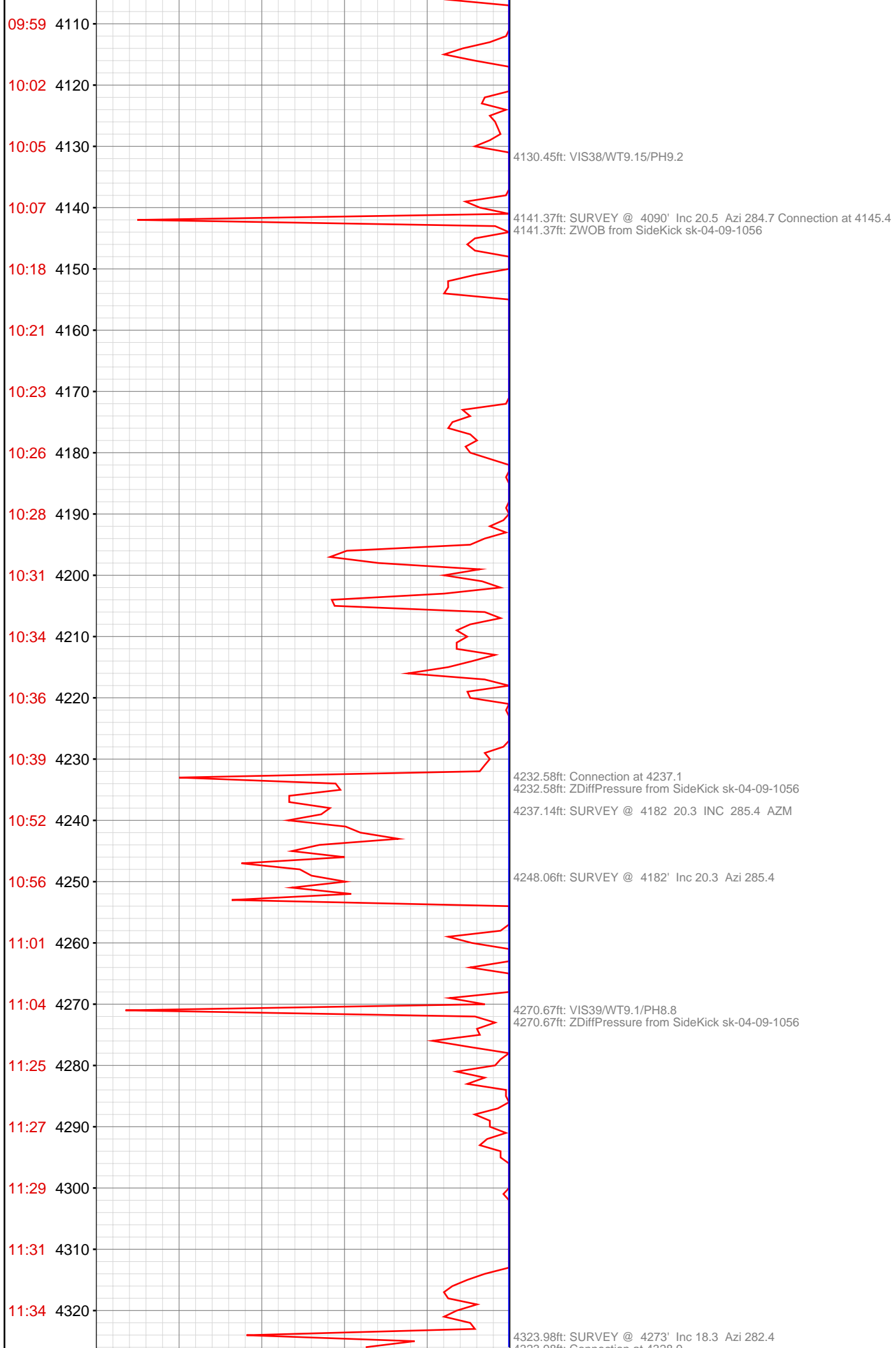


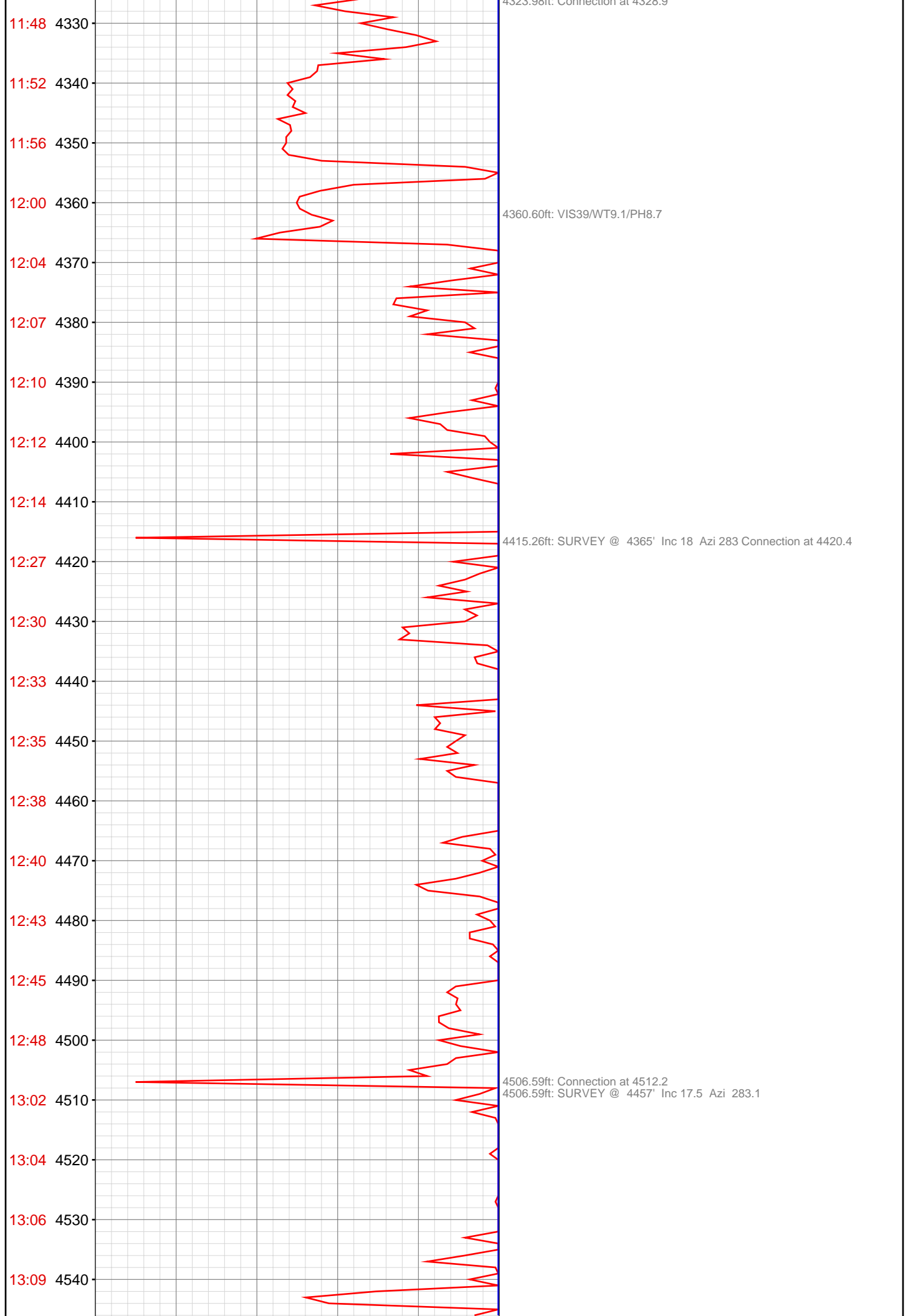


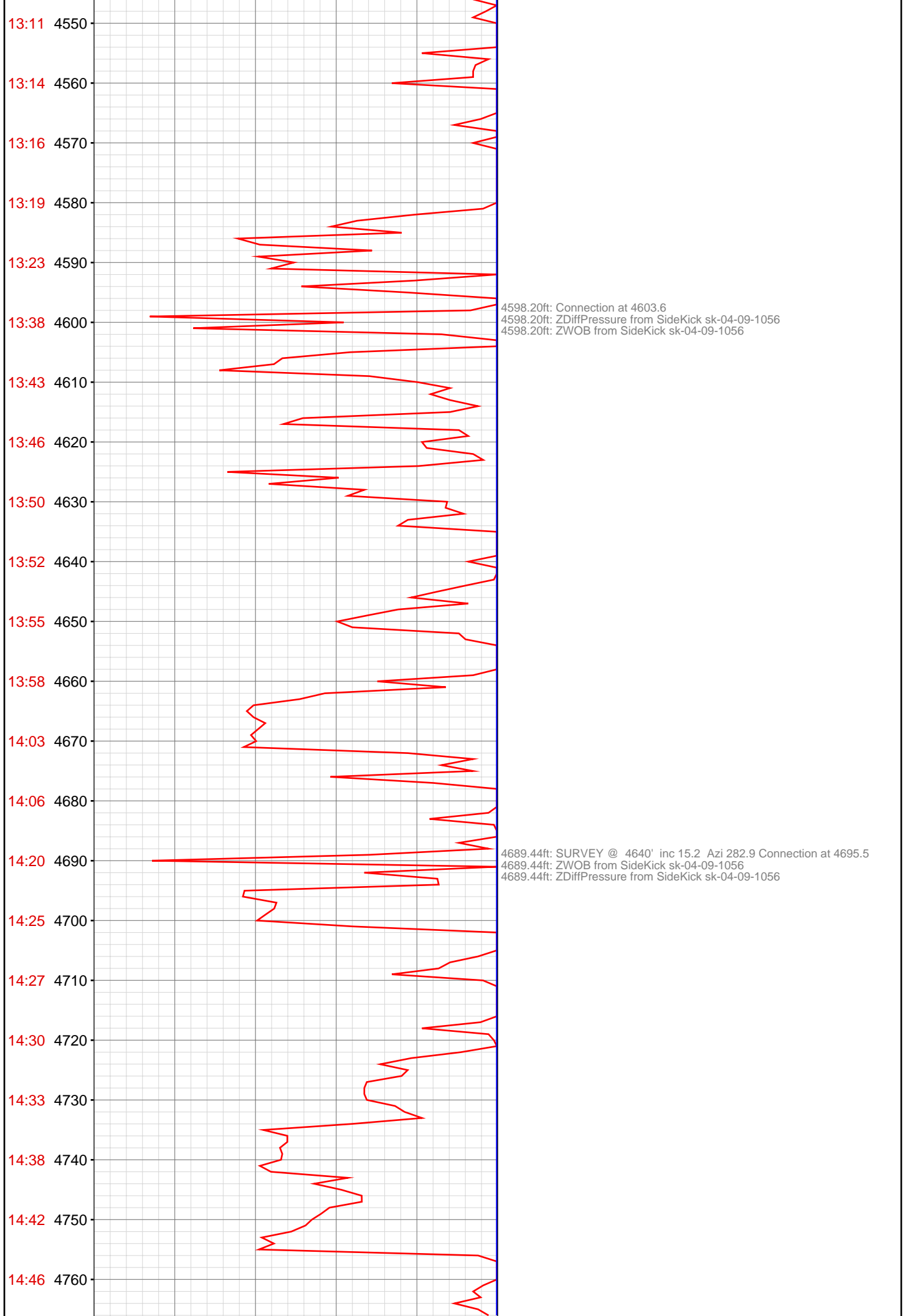


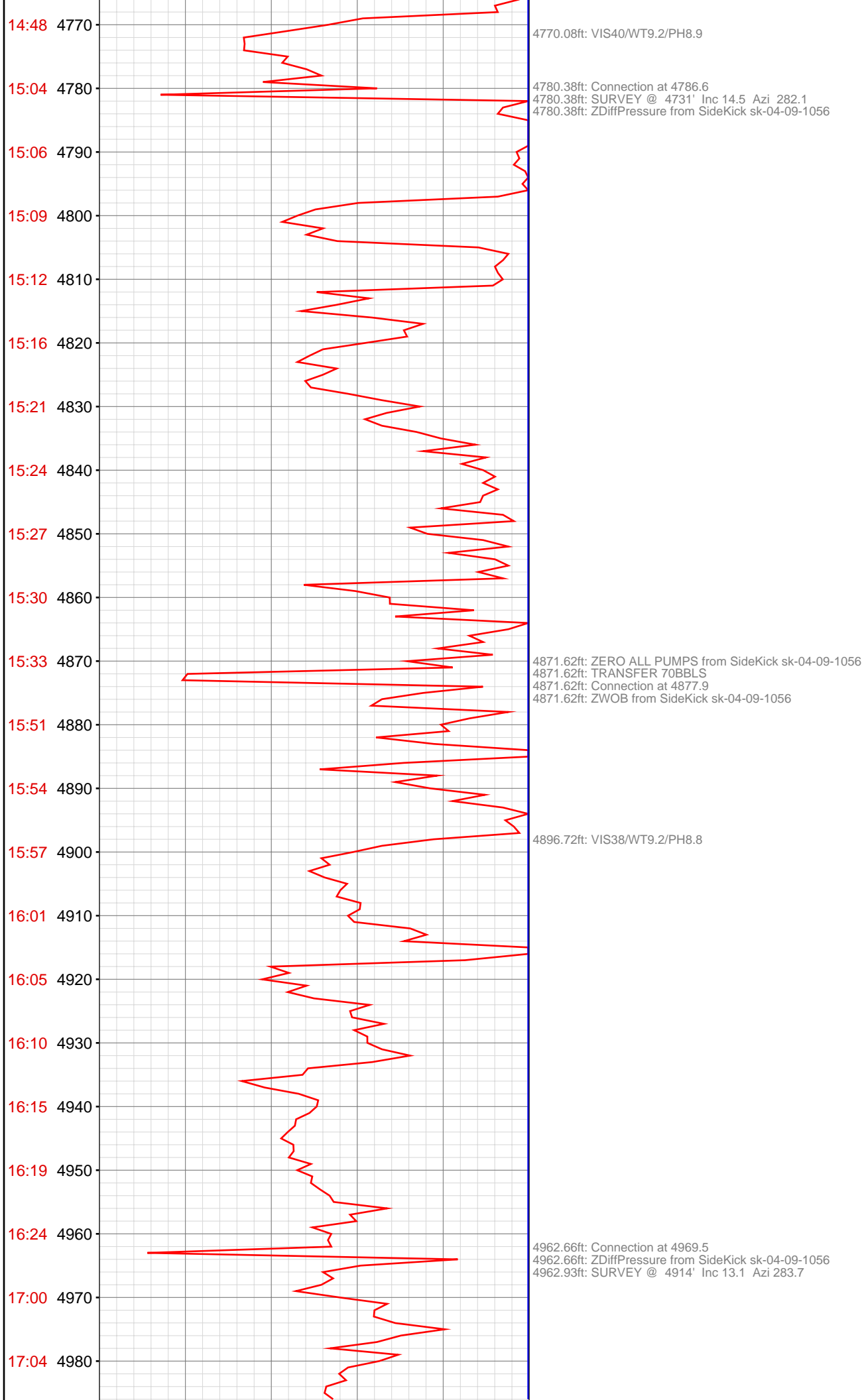


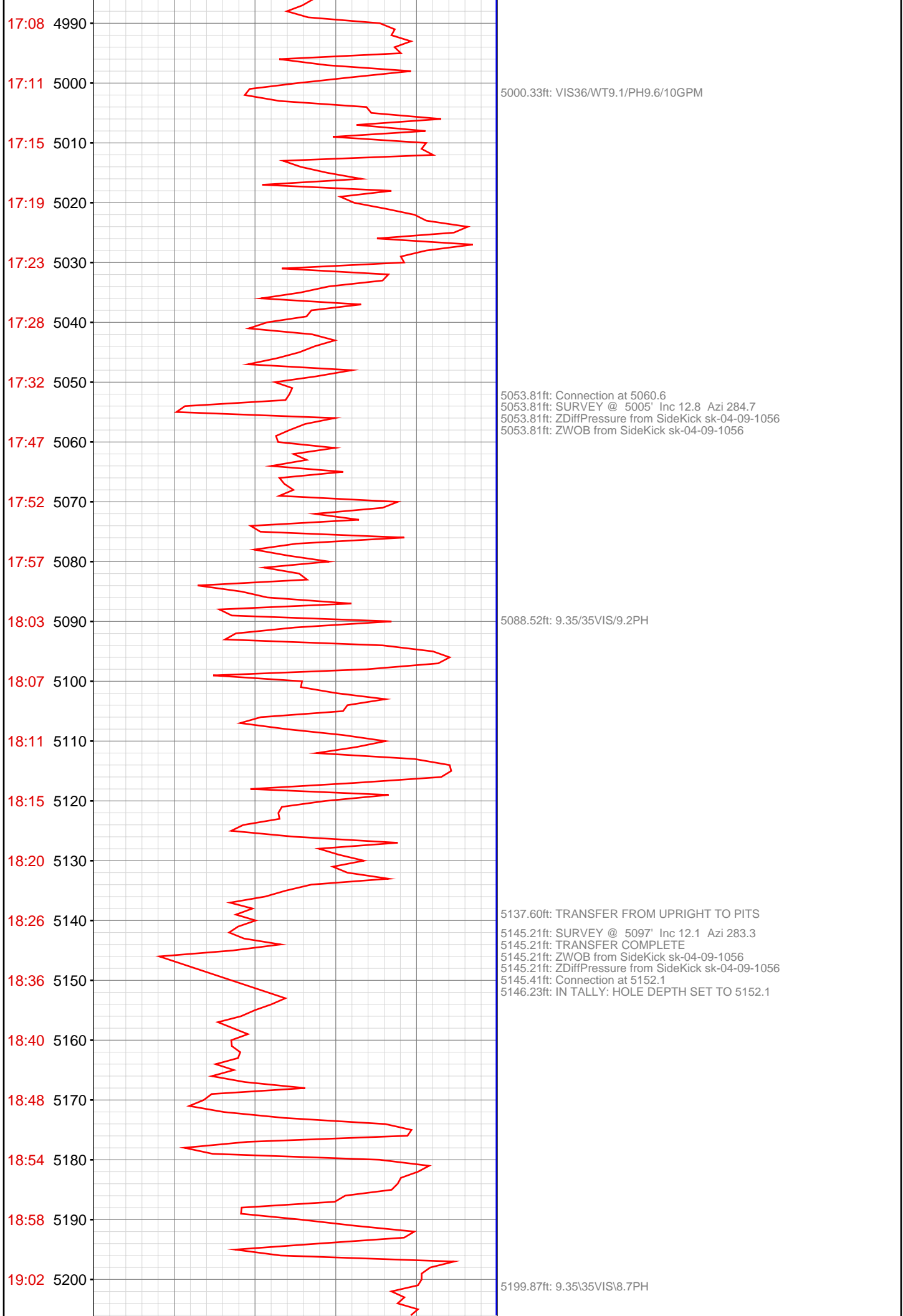


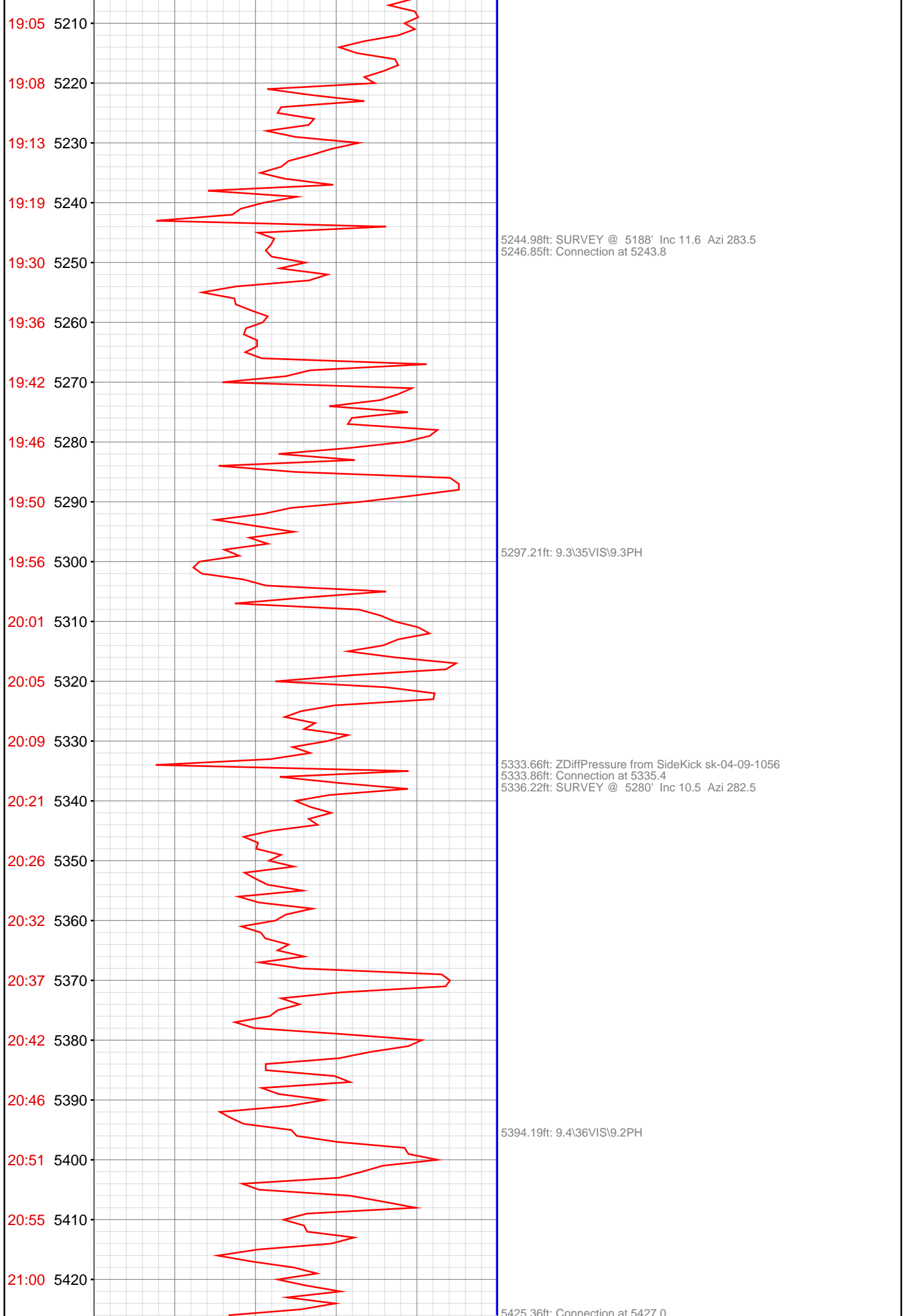


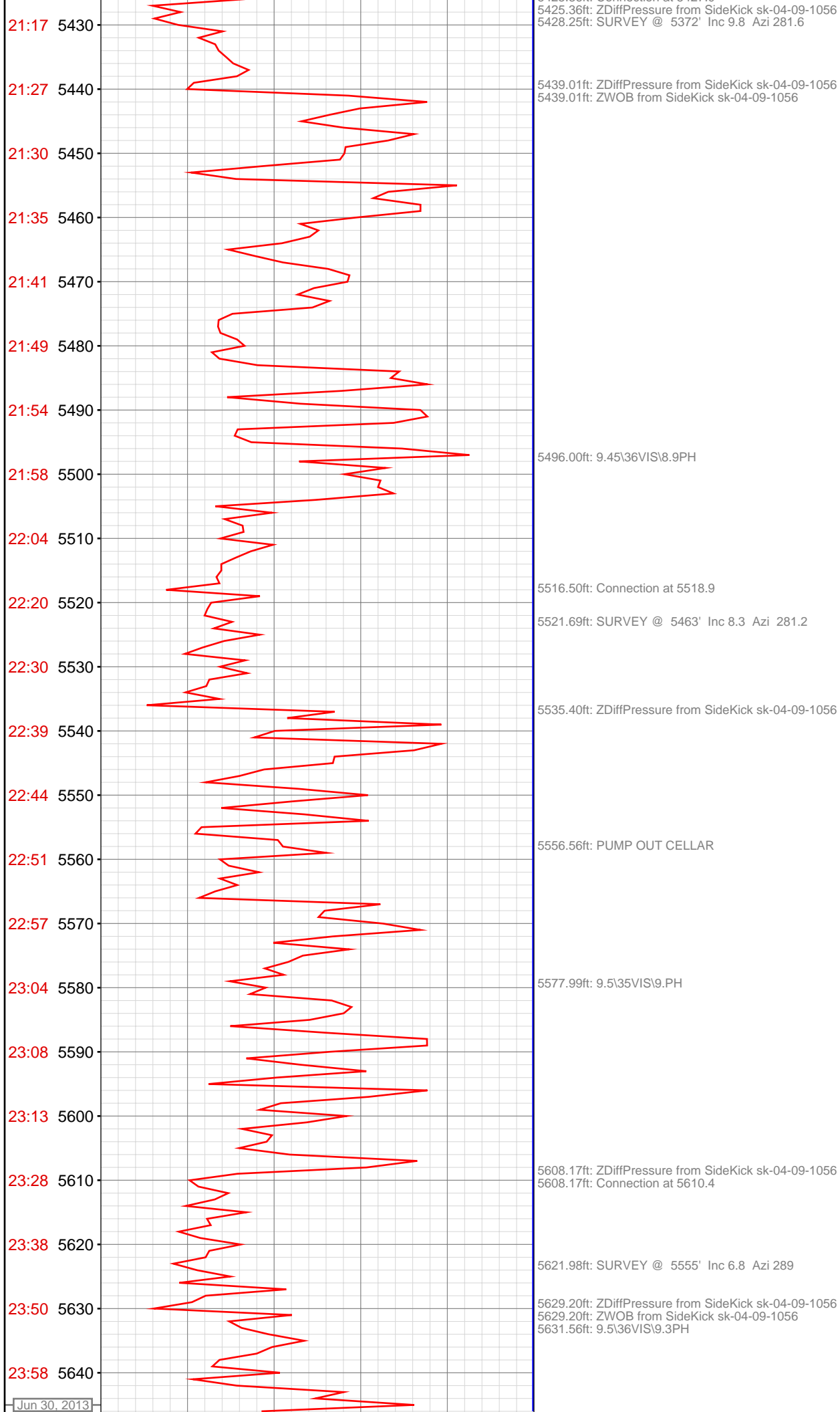


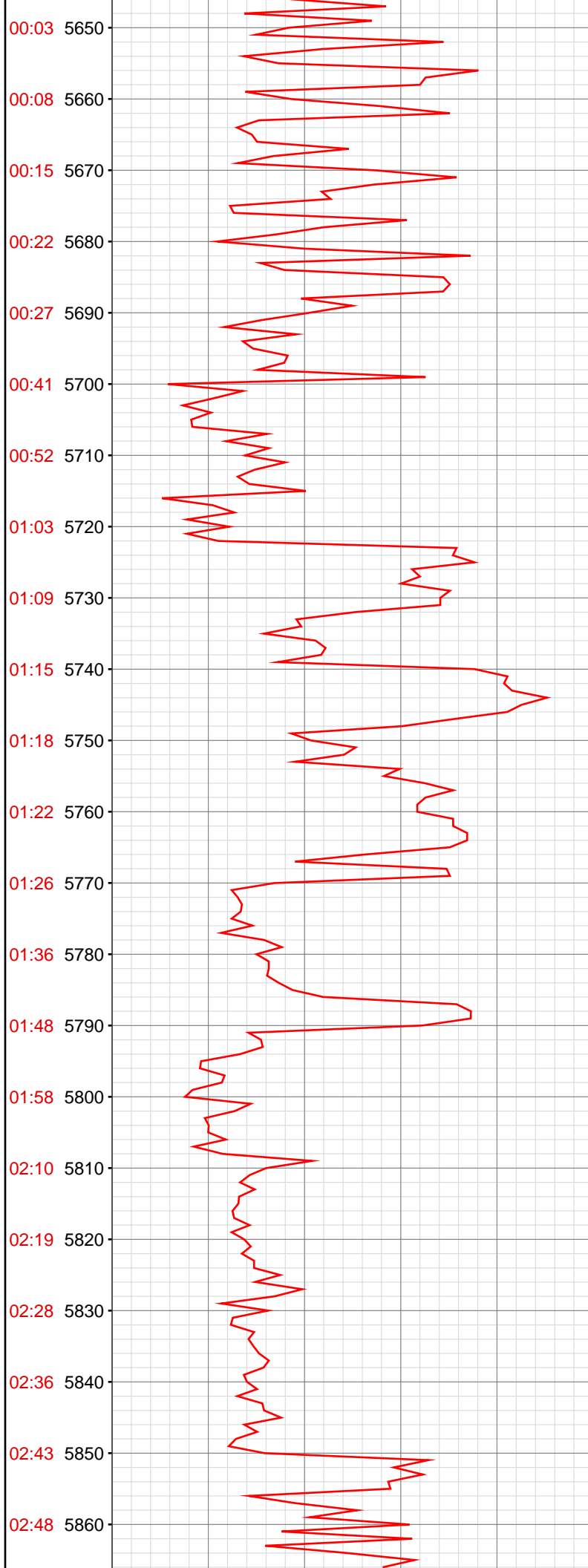










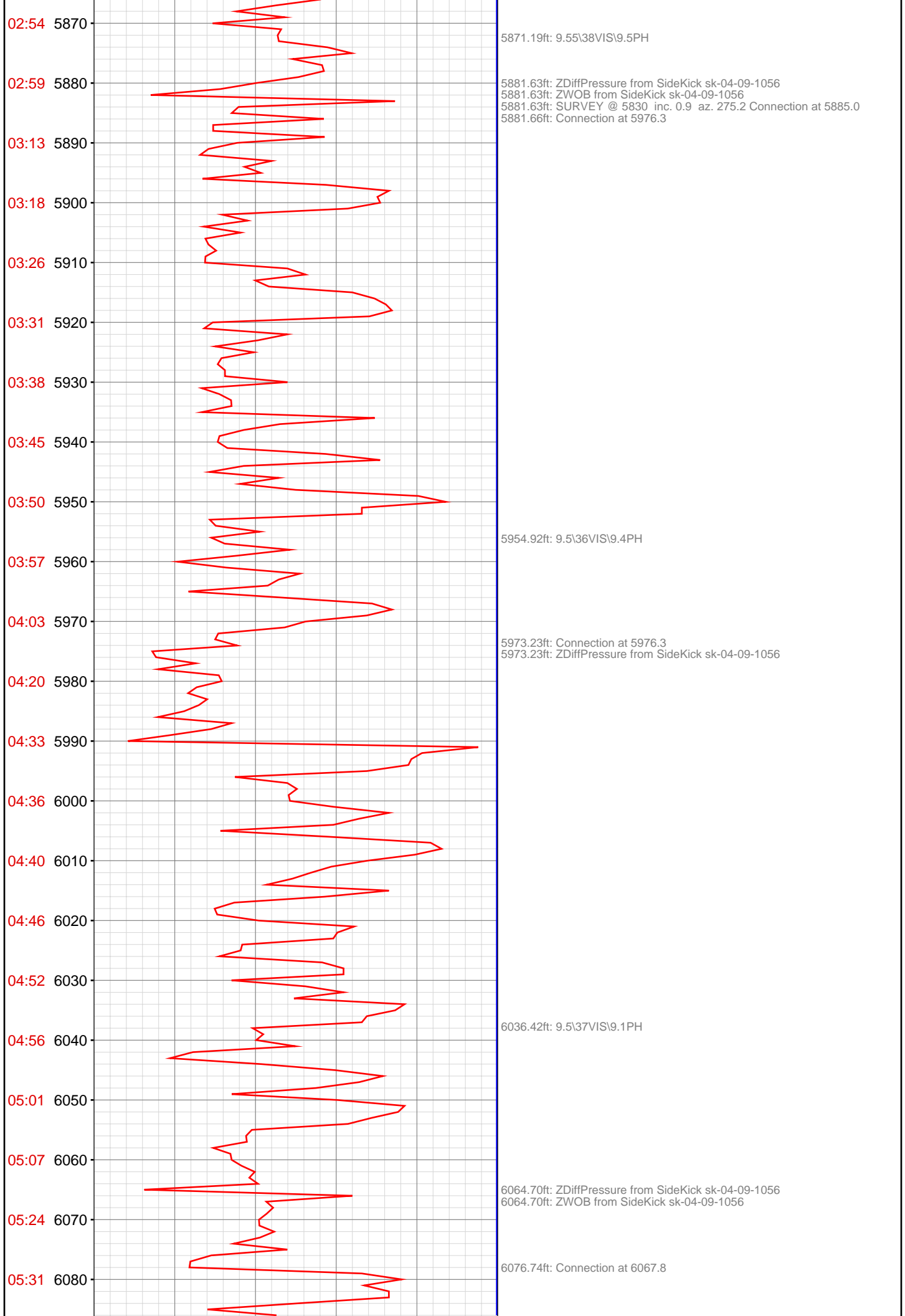


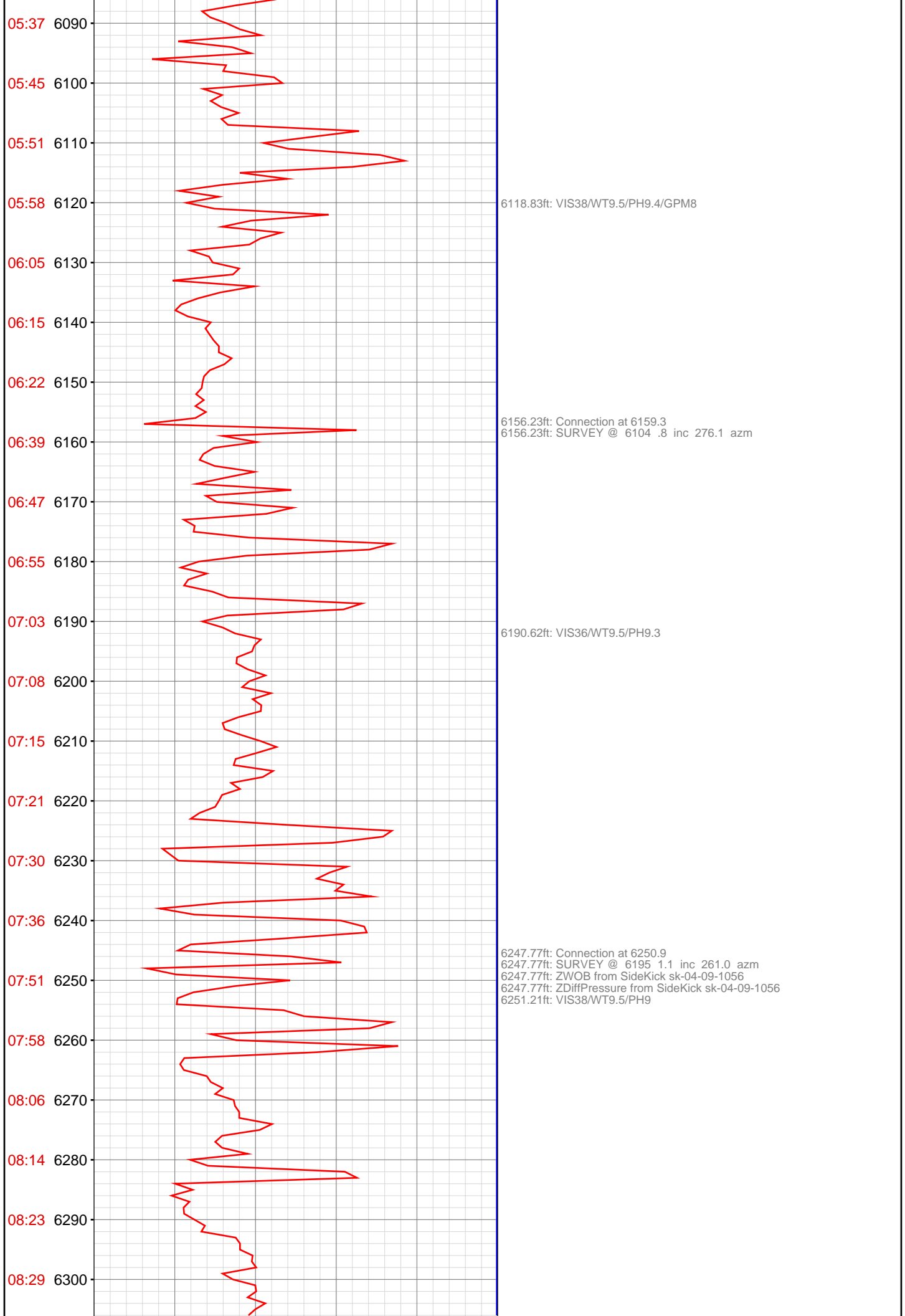
5699.21ft: ZDiffPressure from SideKick sk-04-09-1056
5699.21ft: Connection at 5702.0
5700.66ft: SURVEY @ 5647' Inc 4.8 Azi 291.7

5709.19ft: 9.5\35VIS\9.1PH

5790.52ft: Connection at 5793.4
5790.52ft: ZDiffPressure from SideKick sk-04-09-1056
5790.52ft: SURVEY @ 5738' Inc 2.3 Azi 298.9

5796.52ft: 9.55\37VIS\9.3PH



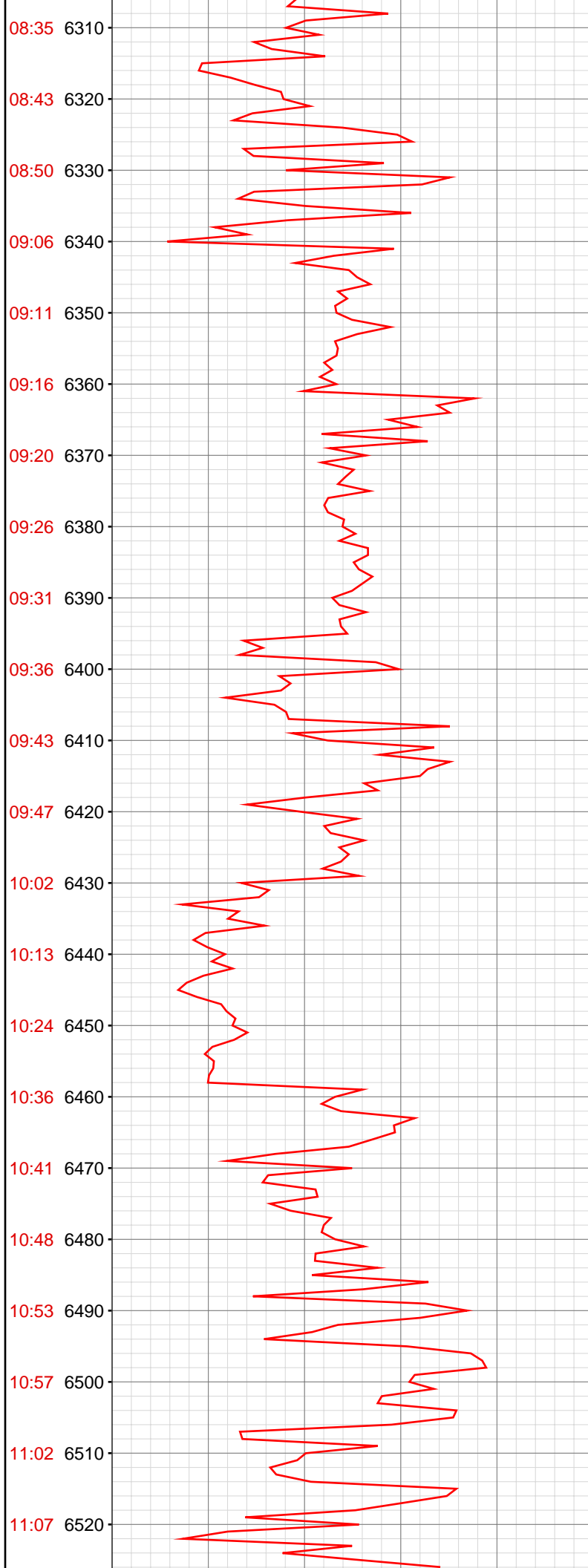


6118.83ft: VIS38/WT9.5/PH9.4/GPM8

6156.23ft: Connection at 6159.3
6156.23ft: SURVEY @ 6104 .8 inc 276.1 azm

6190.62ft: VIS36/WT9.5/PH9.3

6247.77ft: Connection at 6250.9
6247.77ft: SURVEY @ 6195 1.1 inc 261.0 azm
6247.77ft: ZWOB from SideKick sk-04-09-1056
6247.77ft: ZDiffPressure from SideKick sk-04-09-1056
6251.21ft: VIS38/WT9.5/PH9



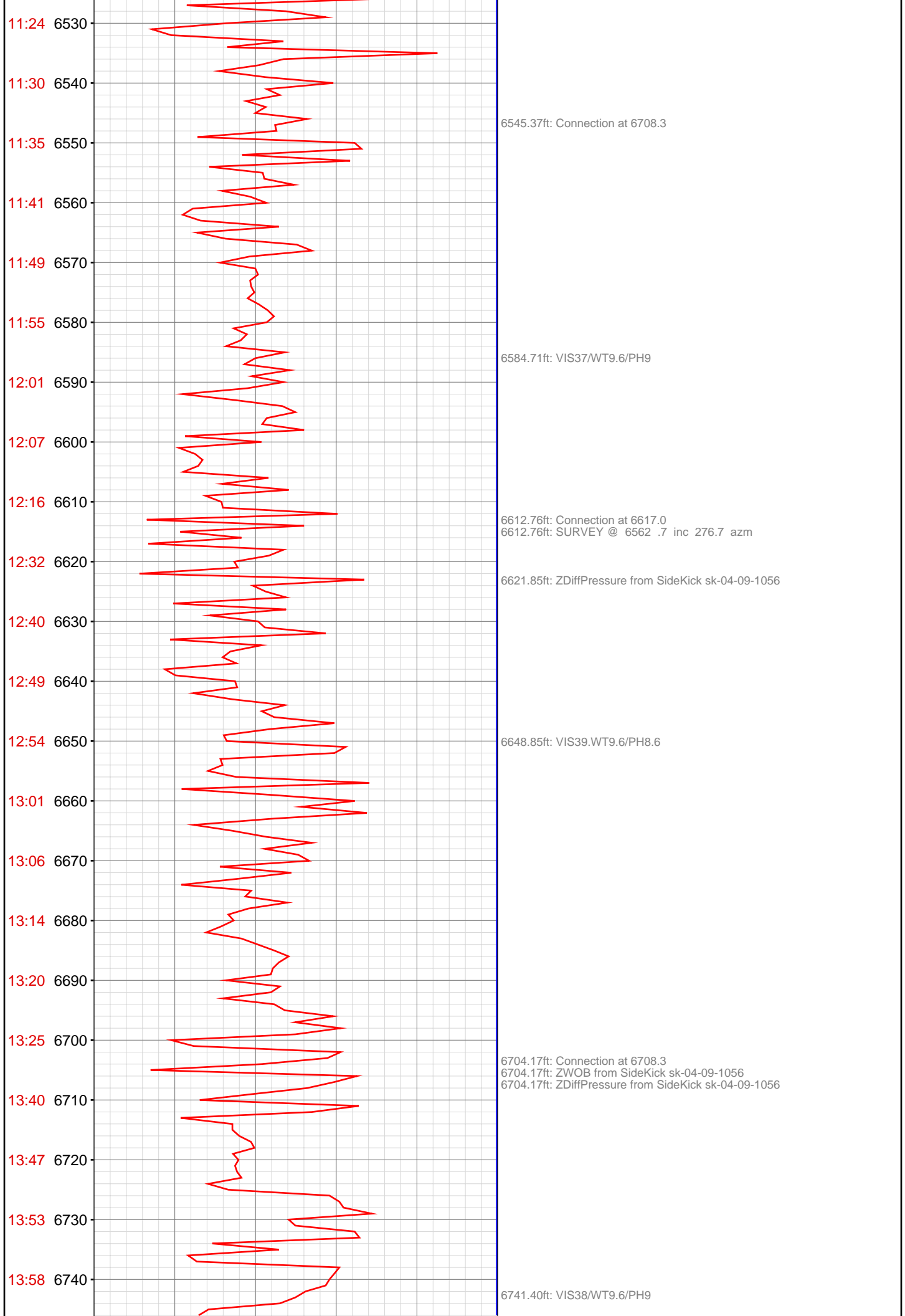
6336.55ft: VIS38/WT9.5
6339.04ft: SURVEY @ 6287 1.1 inc 254.2 azm Connection at 6342.3
6339.04ft: ZWOB from SideKick sk-04-09-1056

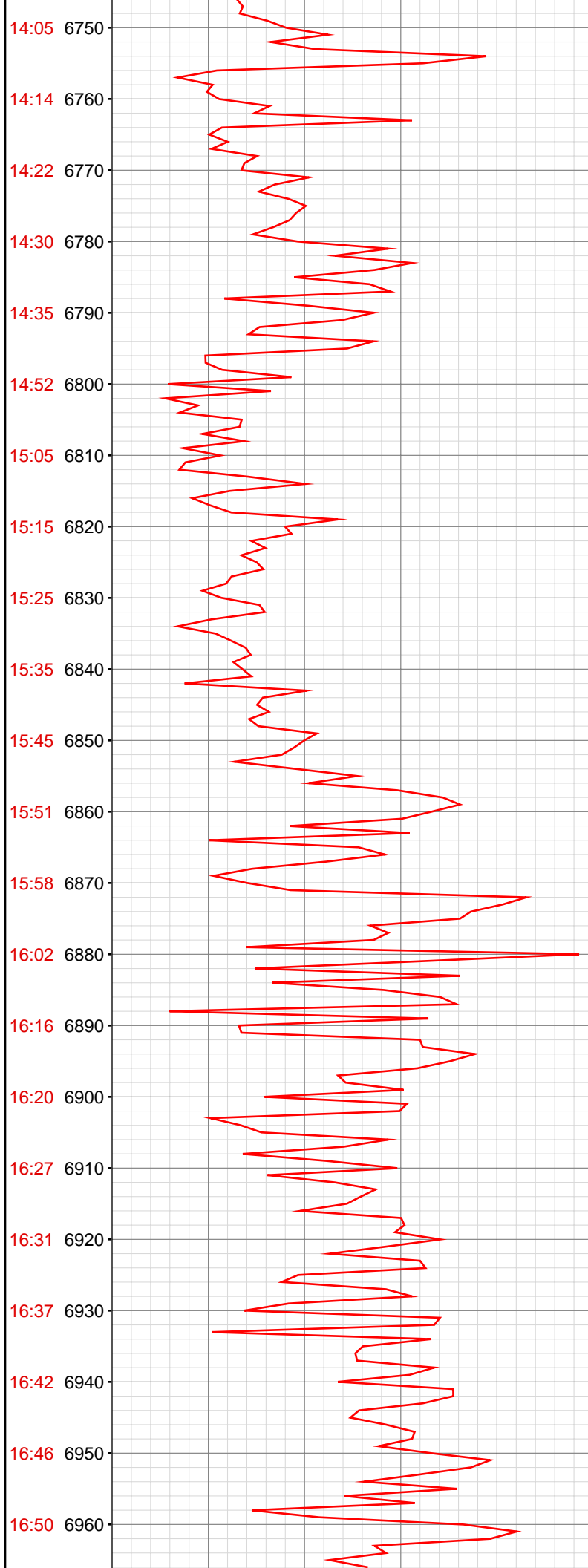
6429.86ft: Connection at 6434.0
6429.86ft: SURVEY @ 6378 1.4 INC 245.0 azm

6440.45ft: VIS37/WT9.5/PH9.3

6504.89ft: VIS37/WT9.55/PH9

6521.26ft: Connection at 6525.5
6521.26ft: SURVEY @ 6470 .6 inc 280.1 azm





6795.80ft: Connection at 6799.5
6795.80ft: ZDiffPressure from SideKick sk-04-09-1056

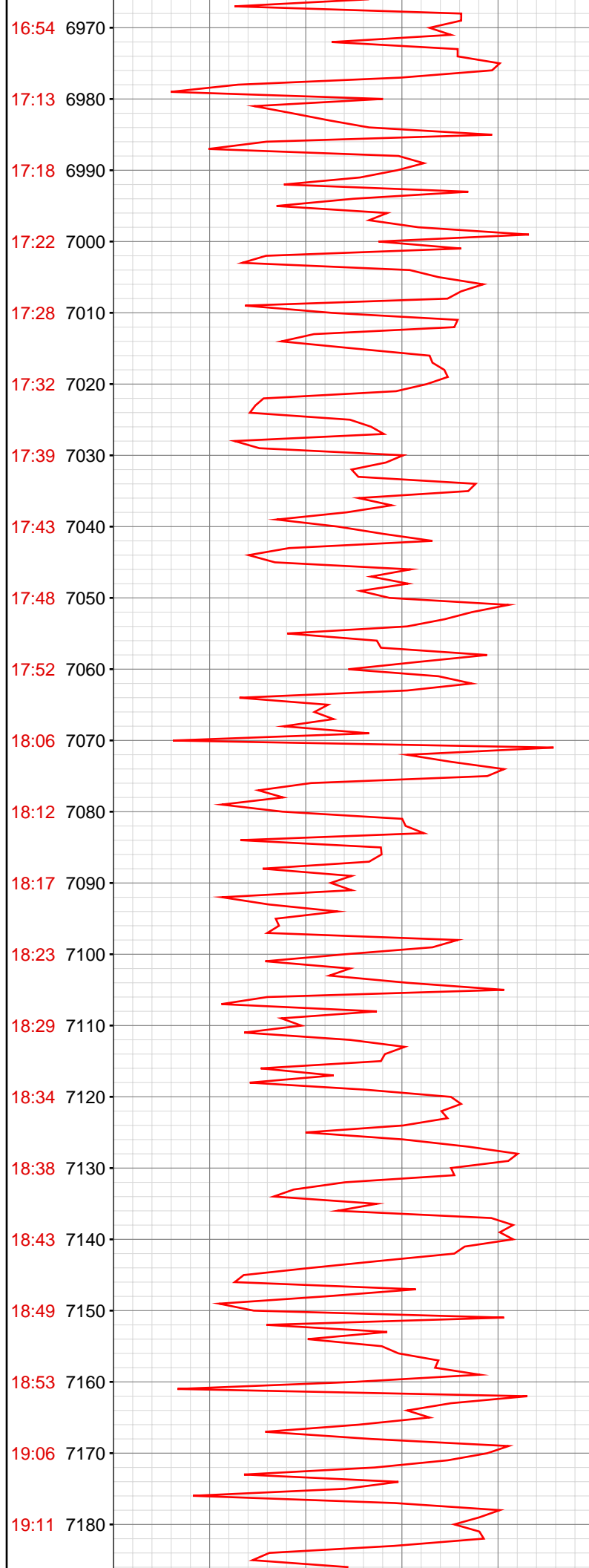
6803.51ft: SURVEY @ 6744' Inc .8 Azi 269.4

6810.60ft: VIS39/WT9.75/PH8.8

6841.70ft: ZDiffPressure from SideKick sk-04-09-1056

6863.45ft: VIS39/WT9.75

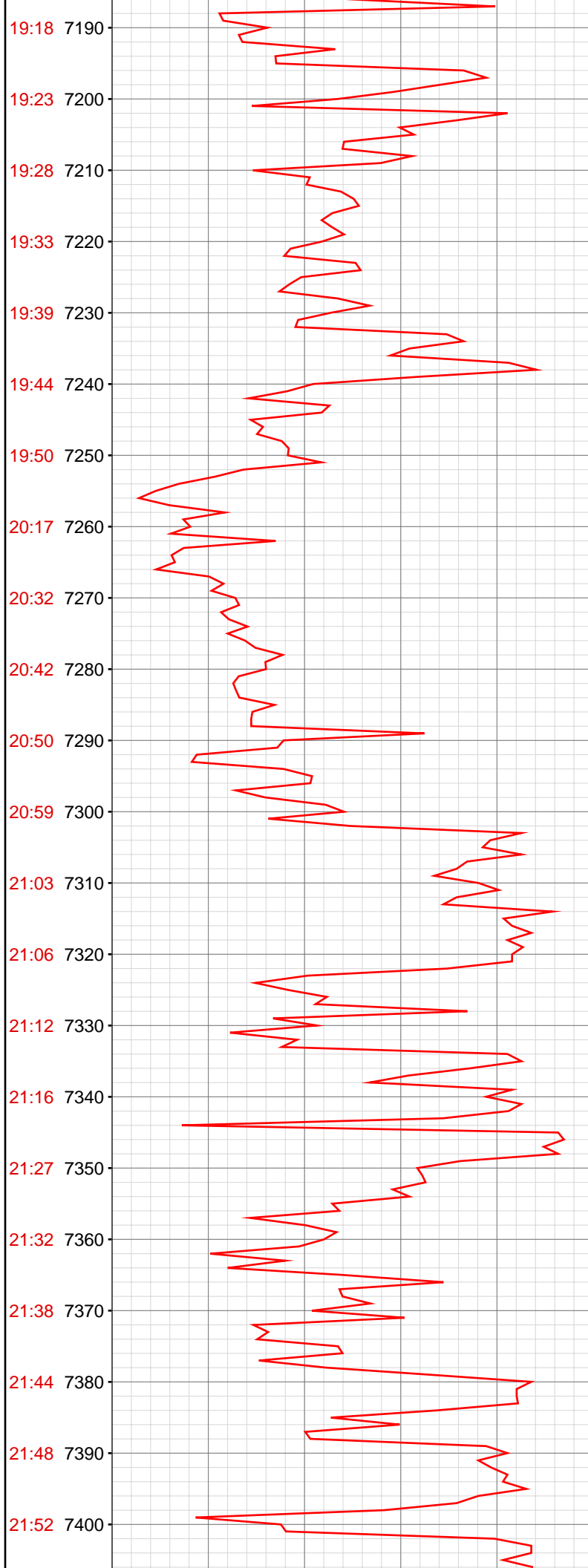
6887.04ft: Connection at 6891.0
6887.04ft: ZDiffPressure from SideKick sk-04-09-1056
6890.22ft: SURVEY @ 6836' Inc .8 Azi 92.5



6978.38ft: Connection at 6982.2
6978.38ft: VIS37/WT9.75/PH9.4
6978.38ft: SURVEY 6927 0.7 inc 114.4 azi
6978.38ft: ZDiffPressure from SideKick sk-04-09-1056

7066.90ft: 9.85\36VIS\9.2PH
7069.85ft: SURVEY @ '7019' Inc .9 Azi 151.1
7069.85ft: ZDiffPressure from SideKick sk-04-09-1056
7069.85ft: ZWOB from SideKick sk-04-09-1056
7071.59ft: Connection at 7074.0

7160.99ft: 9.85\36VIS\9.1PH SURVEY 7110 1.6 inc 162.3 azi
7160.99ft: ZDiffPressure from SideKick sk-04-09-1056
7162.73ft: Connection at 7165.7



7252.40ft: 9.9\36VIS\9.PH
7252.40ft: Connection at 7257.0
7252.40ft: SURVEY 7202 1.8 inc 181.6 azi

7292.16ft: ZDiffPressure from SideKick sk-04-09-1056

7309.25ft: 9.95\37VIS\9.5PH

7343.83ft: SURVEY 7293 0.4 inc 163.3 azi
7343.83ft: ZDiffPressure from SideKick sk-04-09-1056
7343.83ft: ZWOB from SideKick sk-04-09-1056
7346.72ft: Connection at 7348.8

21:56 7410

22:02 7420

22:07 7430

22:19 7440

22:23 7450

22:27 7460

22:32 7470

22:37 7480

22:43 7490

22:48 7500

22:52 7510

22:58 7520

23:15 7530

23:21 7540

23:25 7550

23:28 7560

23:35 7570

23:40 7580

23:48 7590

23:54 7600

23:57 7610

00:15 7620

7409.29ft: 9.9\37VIS\9.5PH

7435.14ft: SURVEY 7385 0.3 inc 344.3 azi
7435.14ft: ZDiffPressure from SideKick sk-04-09-1056
7435.14ft: Connection at 7440.4

7506.92ft: 9.9\36VIS\9.4PH

7526.25ft: SURVEY 7476 0.5 inc 297.4 azi
7526.25ft: ZDiffPressure from SideKick sk-04-09-1056
7526.25ft: Connection at 7531.4

7596.69ft: 9.8\36VIS\9.3PH

7617.65ft: SURVEY 7567 0.7 inc 308.0 azi
7617.65ft: Connection at 7622.4
7617.65ft: ZDiffPressure from SideKick sk-04-09-1056
7617.65ft: ZWOB from SideKick sk-04-09-1056

Jul 01, 2013

