

**BILL BARRETT CORPORATION E-BILL  
DO NOT MAIL-1099 18TH ST,STE 2300W  
DENVER, Colorado**

Dutch Lake 03-03H

CADE 24

## **Post Job Summary** **Cement Surface Casing**

Date Prepared: 11/14/2013  
Version: 1

Service Supervisor: LAVALLEY, LARRY

Submitted by: ESTENSSORO, SEBASTIAN

**HALLIBURTON**

# HALLIBURTON

## Wellbore Geometry

---

Job Tubulars					MD		Shoe Joint Length ft
Type	Description	Size in	ID in	Wt lbm/ft	Top ft	Bottom ft	
Open Hole Section	13 1/2" Open Hole		13.500		0.00	863.00	
Casing	9 5/8" Surface Casing	9.63	8.921	36.00	0.00	866.00	42.00

# HALLIBURTON

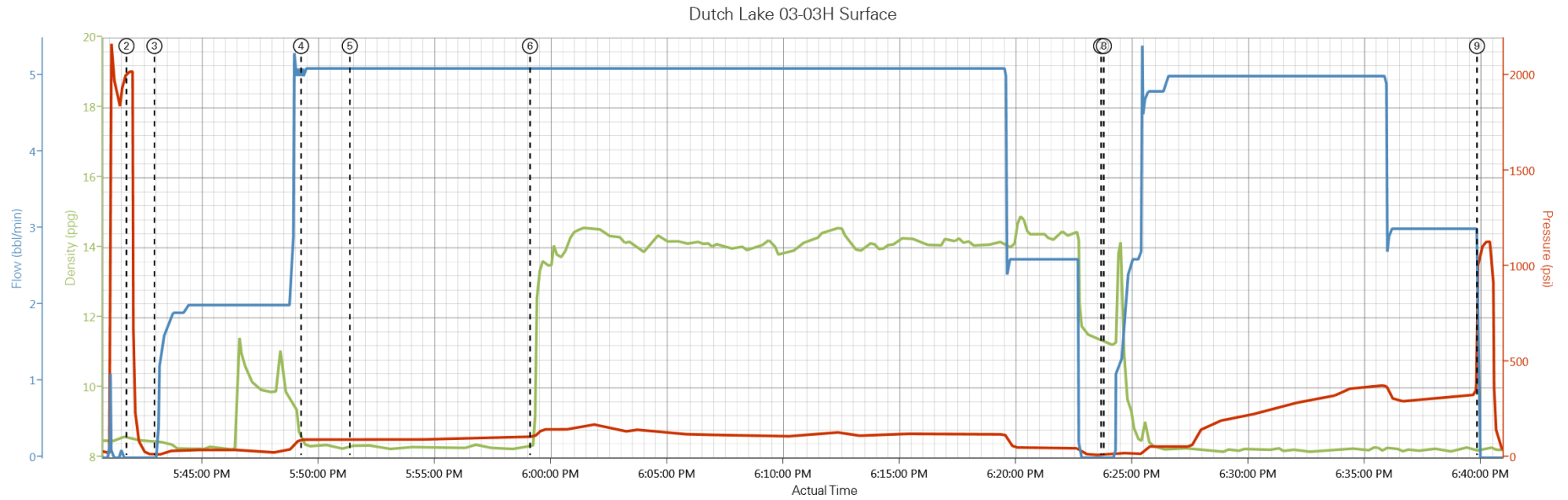
## ***Pumping Schedule***

---

<b>Stage /Plug #</b>	<b>Fluid #</b>	<b>Fluid Type</b>	<b>Fluid Name</b>	<b>Surface Density lbm/gal</b>	<b>Avg Rate bbl/min</b>	<b>Surface Volume</b>	<b>Downhole Volume</b>
1	1	Spacer	FRESH WATER	8.33	2.00	10.0 bbl	10.0 bbl
1	2	Spacer	Dye Water Spacer	0.00	2.00	10.0 bbl	10.0 bbl
1	3	Spacer	Fresh Water Spacer	0.00	5.00	40.0 bbl	40.0 bbl
1	4	Cement Slurry	Tail Cement	14.20	5.00	400.0 sacks	400.0 sacks
1	5	Spacer	DISPLACEMENT	8.33	5.00	63.0 bbl	63.0 bbl

# HALLIBURTON

## Data Acquisition



— DH Density (ppg)   
 — PS Pump Press (psi)   
 — Comb Pump Rate (bb/min)

- ① Start Job 8.47;7;0    ③ Pump Spacer 1 8.47;15;0    ⑤ Pump Spacer 1 8.34;94;5.1    ⑦ Drop Top Plug 11.31;15;0    ⑨ Bump Plug 8.18;1056;0
- ② Test Lines 8.58;2023;0    ④ Pump Spacer 2 8.37;95;5.1    ⑥ Pump Lead Cement 8.33;111;5.1    ⑧ Pump Displacement 11.3;15;0    ⑩ End Job 8.24;21;0

# HALLIBURTON

## Service Supervisor Reports

### Job Log

Date/Time	Chart #	Activity Code	Pump Rate	Cum Vol	Pump	Pressure (psig)	Comments
11/07/2013 12:00		Call Out					CREW CALLED AT 02:00 AM
11/07/2013 15:30		Arrive at Location from Service Center					
11/07/2013 15:30		Assessment Of Location Safety Meeting					HAZARD HUNT DONE ON LOCATION
11/07/2013 15:30		Waiting - Arrived Early to Location - Start Time					WAIT ON RIG TO FINISH RUNNING CASING
11/07/2013 15:35		Waiting - Arrived Early to Location - End Time					RIG TURNED OVER TO HES TO RIG UP
11/07/2013 17:15		Safety Meeting - Pre Job					WITH RIG CREW AND ALL 3RD PARTIES ON LOCATION
11/07/2013 17:30		Start Job					
11/07/2013 17:41		Test Lines				2023.0	FRESH WATER WITH NO ADDITIVES
11/07/2013 17:43		Pump Spacer 1	2	10		95.0	FRESH WATER WITH RED DYE ADDED
11/07/2013 17:49		Pump Spacer 2	2	10		94.0	FRESH WATER WITH NO ADDITIVES
11/07/2013 17:51		Pump Spacer 1	5	40		95.0	FRESH WATER WITH NO ADDITIVES
11/07/2013 17:59		Pump Lead Cement	5	110		111.0	400 SKS SWIFCEM B2 MIXED @ 14.2PPG YIELD 1.55 FT3/FT AND 7.68 GAL/SK. VERIFIED BY PRESSURIZED SCALES
11/07/2013 18:22		Shutdown					
11/07/2013 18:23		Drop Top Plug					HWE TOP PLUG PRELOADED
11/07/2013 18:23		Pump Displacement	5	63		335.0	FRESH WATER WITH NO ADDITIVES. CAUGHT CEMENT @ 26 BBLS AWAY AND SPACER RETURNED TO SURFACE @ END OF CEMENT AND 13 BBLS CEMENT BACK TO SURFACE
11/07/2013 18:39		Bump Plug	3			1056.0	CALCULATED PRESSURE TO LAND WAS 385 AND PRESSURE TO LIFT WAS 367 PSI
11/07/2013 18:40		Other					FLOATS HELD AND GOT 1 BBLS BACK.
11/07/2013 18:41		End Job					HELD SAFETY MEETING TO RIG DOWN AND DEPART LOCATION

**The Road to Excellence Starts with Safety**

<b>Sold To #:</b> 343492		<b>Ship To #:</b> 3187797		<b>Quote #:</b>		<b>Sales Order #:</b> 900883401	
<b>Customer:</b> BILL BARRETT CORPORATION E-BILL				<b>Customer Rep:</b> Gritts, Kim			
<b>Well Name:</b> Dutch Lake			<b>Well #:</b> 03-03H		<b>API/UWI #:</b> 05-123-33184		
<b>Field:</b> WATTENBURG		<b>City (SAP):</b> BRIGGSDALE		<b>County/Parish:</b> Weld		<b>State:</b> Colorado	
<b>Contractor:</b> CADE			<b>Rig/Platform Name/Num:</b> Cade24				
<b>Job Purpose:</b> Cement Surface Casing							
<b>Well Type:</b> Development Well				<b>Job Type:</b> Cement Surface Casing			
<b>Sales Person:</b> GREGORY, JON			<b>Srvc Supervisor:</b> LAVALLEY, LARRY			<b>MBU ID Emp #:</b> 419296	

**Job Personnel**

HES Emp Name	Exp Hrs	Emp #	HES Emp Name	Exp Hrs	Emp #	HES Emp Name	Exp Hrs	Emp #
BROOM, KENDALL L	0.0	524682	LAVALLEY, LARRY P	0.0	419296	MYRE, JAMES	0.0	549859
WILEY, JAMES A	0.0	440080						

**Equipment**

HES Unit #	Distance-1 way	HES Unit #	Distance-1 way	HES Unit #	Distance-1 way	HES Unit #	Distance-1 way
10866497C	56 mile	11488570C	56 mile	11518549	56 mile	11562570C	56 mile

**Job Hours**

Date	On Location Hours	Operating Hours	Date	On Location Hours	Operating Hours	Date	On Location Hours	Operating Hours
<b>TOTAL</b>								
<i>Total is the sum of each column separately</i>								

**Job**

**Job Times**

Formation Name	Formation Depth (MD)	Top	Bottom	Called Out	Date	Time	Time Zone
					07 - Nov - 2013	12:00	MST
<b>Form Type</b>			<b>BHST</b>	<b>On Location</b>	07 - Nov - 2013	15:30	MST
<b>Job depth MD</b>	863. ft		<b>Job Depth TVD</b>	863. ft	<b>Job Started</b>	07 - Nov - 2013	17:30
<b>Water Depth</b>			<b>Wk Ht Above Floor</b>	6. ft	<b>Job Completed</b>	07 - Nov - 2013	18:40
<b>Perforation Depth (MD)</b>	<i>From</i>		<i>To</i>		<b>Departed Loc</b>	07 - Nov - 2013	19:30

**Well Data**

Description	New / Used	Max pressure psig	Size in	ID in	Weight lbm/ft	Thread	Grade	Top MD ft	Bottom MD ft	Top TVD ft	Bottom TVD ft
13 1/2" Open Hole				13.5				.	863.		
9 5/8" Surface Casing	Unknown		9.625	8.921	36.		J-55	.	866.		

**Sales/Rental/3<sup>rd</sup> Party (HES)**

Description	Qty	Qty uom	Depth	Supplier
CMT CASING EQUIPMENT BOM	1	JOB		
MILEAGE FOR CEMENTING CREW,ZI	80	MI		
ZI FUEL SURCHG-CARS/PICKUPS<1 1/2TON	80	MI		
SHOE,GID,9-5/8 8RD	1	EA		
CLR,FLT,9-5/8 8RD 29.3-40PPF,2-3/4	1	EA		
PLUG,CMTG,TOP,9 5/8,HWE,8.16 MIN/9.06 MA	1	EA		
CENTRALIZER-9-5/8"-CSG-12 1/4"-HINGED	4	EA		
COLLAR-STOP-9 5/8"-FRICTION-HINGED	1	EA		
Description	Qty	Qty uom	Depth	Supplier

KIT,HALL WELD-A						1	EA		
Fluid Data									
Stage/Plug #: 1									
Fluid #	Stage Type	Fluid Name	Qty	Qty uom	Mixing Density lbm/gal	Yield ft <sup>3</sup> /sk	Mix Fluid Gal/sk	Rate bbl/min	Total Mix Fluid Gal/sk
1	FRESH WATER		10.00	bbl	8.33			2.0	
2	Dye Water Spacer		10.00	bbl	8.33			2.0	
3	Fresh Water Spacer		40.00	bbl	8.33			5.0	
4	Tail Cement	SWIFTCEM (TM) SYSTEM (452990)	400.0	sacks	14.2	1.55	7.68	5.0	7.68
	7.68 Gal	FRESH WATER							
5	DISPLACEMENT		63.00	bbl	8.33			5.0	
<i>The Information Stated Herein Is Correct</i>				<i>Customer Representative Signature</i>					

