

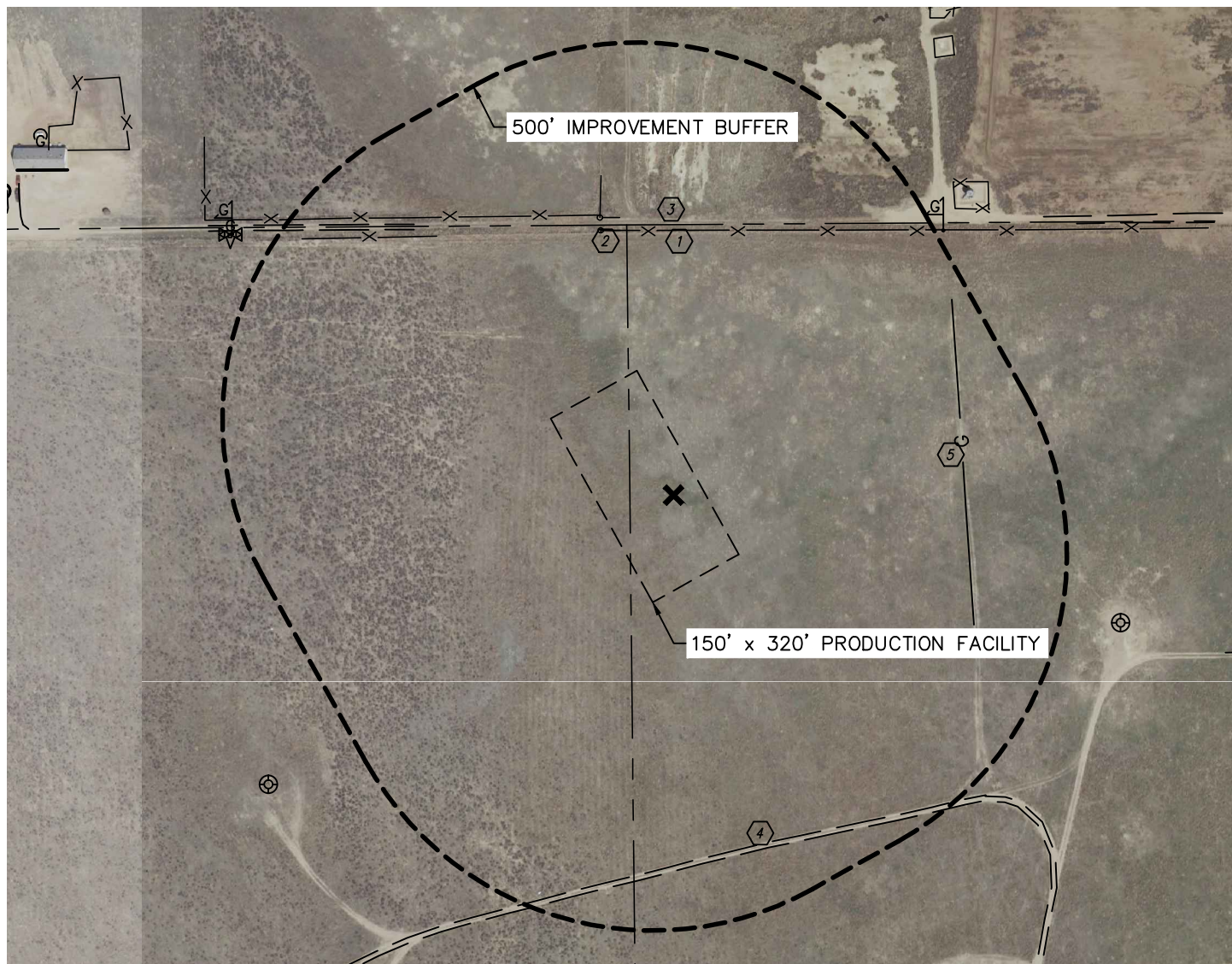


Lat40°, Inc. 1635 Foxtrail Drive, Suite 325 Loveland, CO 970-776-3321

PRODUCTION FACILITY LOCATION DRAWING

BECKER RANCH 5M-TB PAD

SECTION: 5
TOWNSHIP: 3N
RANGE: 64W



REFERENCE POINT LOCATION:

LAT: 40.26063°N
LONG: 104.57456°W

ELEV: 4799'
PDOP: 1.5

DATE: 7/18/2013
OPERATOR: ADAM KELLY
1/41/4: NW1/4NE1/4

FNL: 412'
FEL: 2567'

DISTANCE TO WELL: 521'
ASSOCIATED NEW WELLS:

BECKER RANCH 5J-403
BECKER RANCH 5J-223
BECKER RANCH 5M-443
BECKER RANCH 5M-303

ASSOCIATED EXISTING WELLS:
N/A

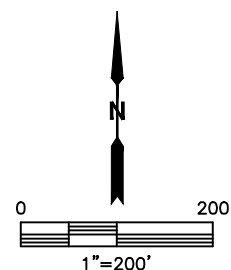
IMPROVEMENTS:

- ① FENCE 398' N, 437' NW
- ② GATE 418' & 437' NW
- ③ PUBLIC ROAD 415' N
- ④ FIELD ROAD 552' SE
- ⑤ GAS LINE SCAR 443' E

NEAREST: BUILDING 1039' NE, BUILDING UNIT 1048' NW,
HIGH OCCUPANCY BUILDING UNIT 5280'+,
DESIGNATED OUTSIDE ACTIVITY AREA 5280'+,
PUBLIC ROAD 415' N, ABOVE GROUND UTILITY 1136' NW,
RAILROAD 5280'+, PROPERTY LINE 412' N

LEGEND

X - REFERENCE POINT
ALL DISTANCES ARE APPROXIMATE.



DATE: 8/26/2013
PROJECT#: 2013107