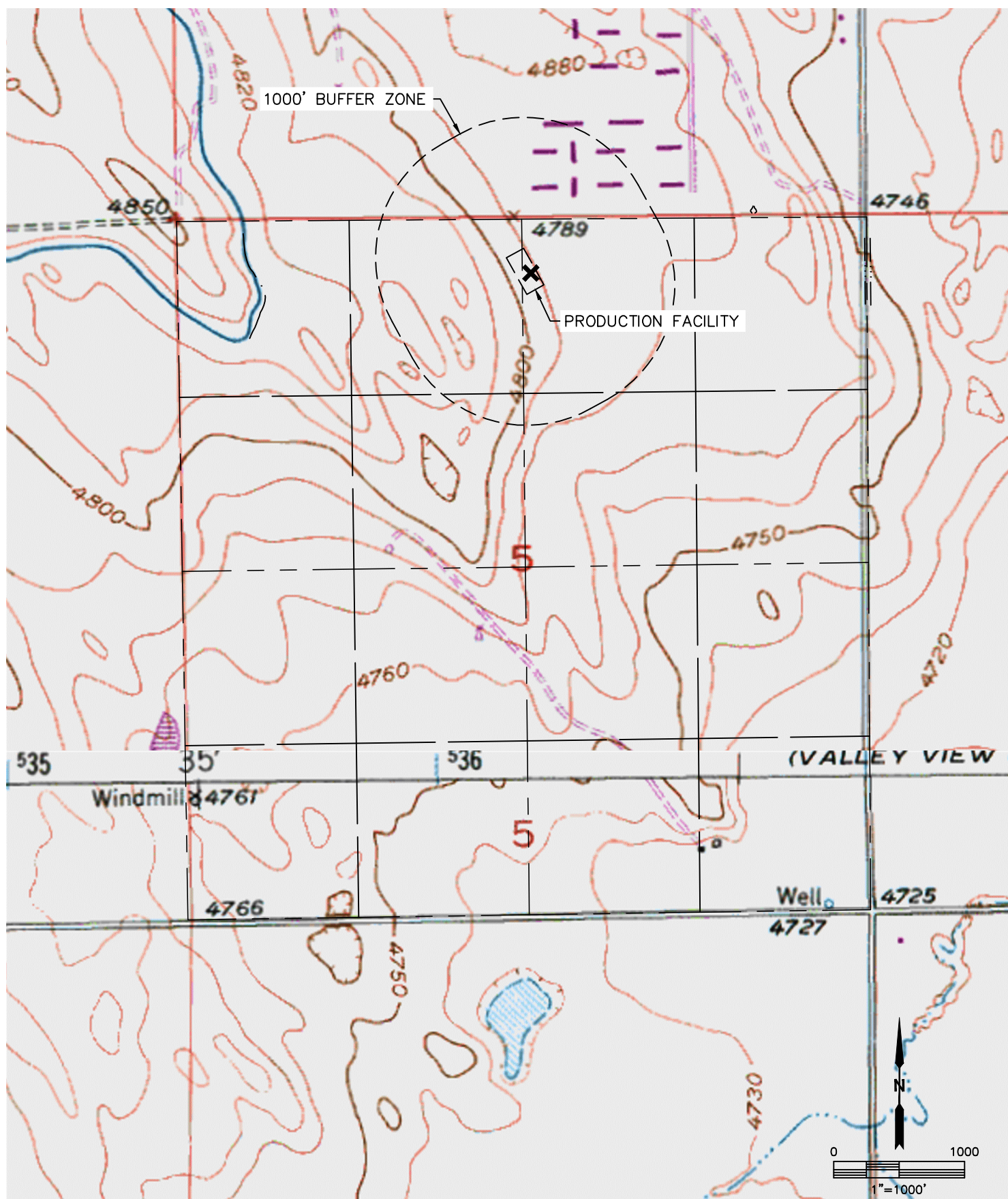


Lat40°, Inc. 1635 Foxtrail Drive, Suite 325 Loveland, CO 970-776-3321

PRODUCTION FACILITY HYDROLOGY MAP

BECKER RANCH 5M-TB PAD

SECTION: 5
TOWNSHIP: 3N
RANGE: 64W



NO VISIBLE SURFACE WATER WITHIN 1000'

DATE: 8/26/2013
PROJECT#: 2013107