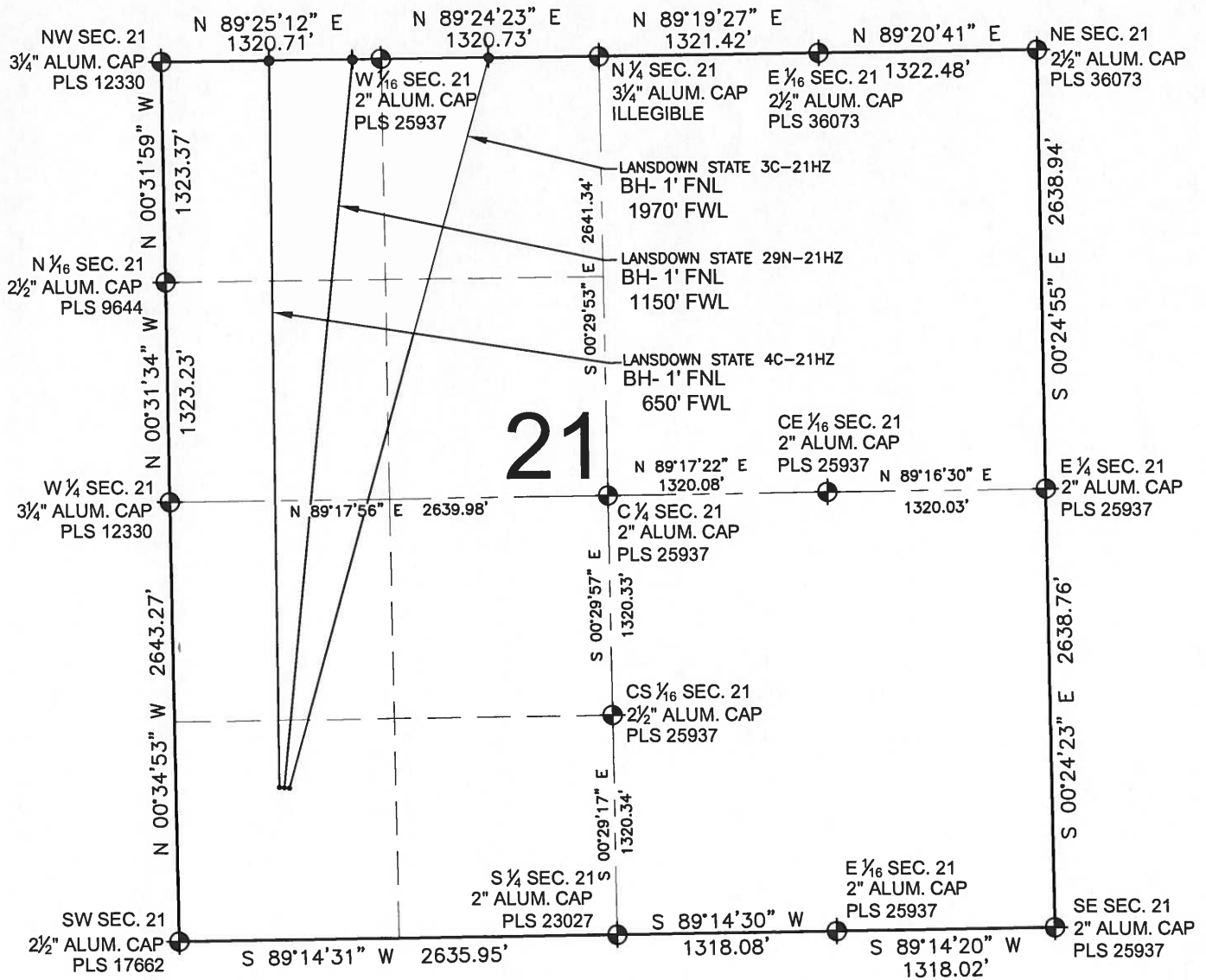


# LANDSDOWN STATE 29N-21HZ MULTI-WELL PLAN

SECTION 21, TOWNSHIP 2 NORTH, RANGE 66 WEST, 6TH P.M.



## LEGEND

- ⊕ = EXISTING MONUMENT
- = PROPOSED WELL
- ⬮ = BOTTOM HOLE
- ◆ = EXISTING WELL
- BH = BOTTOM HOLE

## NOTES:

LANDSDOWN STATE 3C-21HZ TO BE AT 914' FSL, 682' FWL.  
BOTTOM HOLE AT 1' FNL & 1970' FWL  
LANDSDOWN STATE 29N-21HZ TO BE AT 917' FSL, 652' FWL.  
BOTTOM HOLE AT 1' FNL & 1150' FWL  
LANDSDOWN STATE 4C-21HZ TO BE AT 919' FSL, 622' FWL.  
BOTTOM HOLE AT 1' FNL & 650' FWL

PREPARED BY:



KERR-MCGEE OIL & GAS ONSHORE LP

FIELD DATE:  
09-05-13

DRAWING DATE:  
09-06-13

SURFACE LOCATION:

SW 1/4, SW 1/4, SEC. 21, T2N, R66W, 6TH P.M.  
WELD COUNTY, COLORADO

