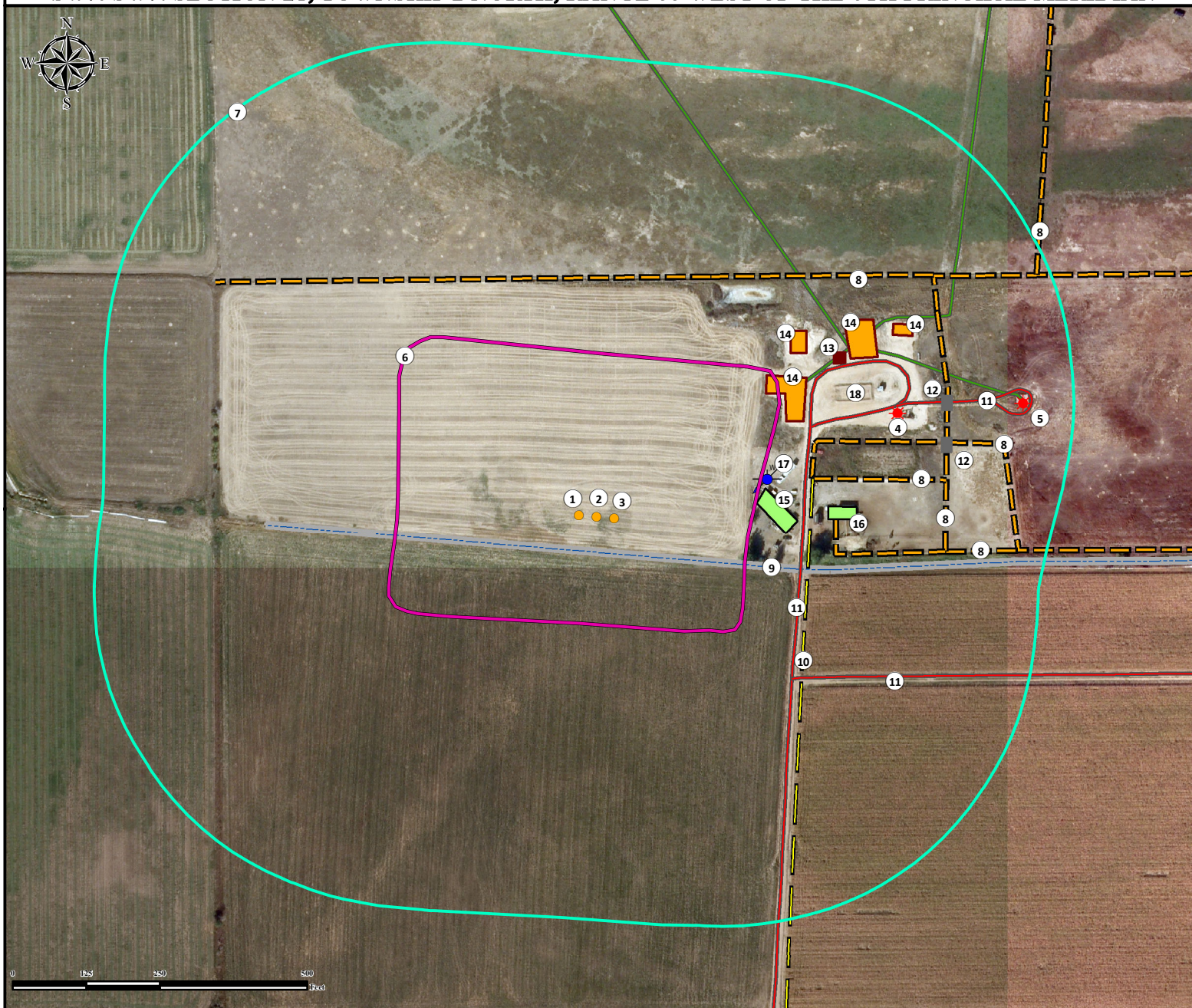


Location Drawing

LANDDOWN STATE 29N-21HZ

Horizontal Multi Well Pad

SW¼ SW¼ SECTION 21, TOWNSHIP 2 NORTH, RANGE 66 WEST OF THE 6TH PRINCIPAL MERIDIAN



1. Proposed Well LANDDOWN STATE 4C-21HZ
2. Proposed Well LANDDOWN STATE 29N-21HZ
3. Proposed Well LANDDOWN STATE 3C-21HZ
4. Existing Well WILLIAM D. LANDDOWN 1 is ±540' NE.
5. Existing Well WILLIAM D. LANDDOWN B UNIT 1 is ±749' NE.
6. Operational Disturbance Area.
7. 500' Radius.

8. Fences are ±373' NE, ±405' N, ±406' E, ±593' E, and ±852' NE.
9. Concrete Ditch is ±60' S.
10. Powerline is ±363' E.
11. Private Roads are ±352' E, ±430' SE, and ±542' NE.
12. Gates are ±607' NE, and ±626' NE.
13. ECD is ±493' NE.

14. Existing Facilities are ±431' NE, ±508' NE, ±590' NE, and ±880' N.
15. Building Unit is ±273' E (Abandoned).
16. Building is ±394' E (Abandoned).
17. Water Well (Permit #204478) is ±298' NE.
18. Abandoned Facility is ±356' NE.

Legend

Proposed Well	ECD	Facility Enclosure	Canal
Existing Well	Disturbance Area	Proposed Facility	Powerline
Gate	500' Radius	Fence	Concrete Ditch
Water Well	Outbuilding/Building Unit	Private Road	Pipeline

Reference Location

All measurements are made from Reference Well LANDDOWN STATE 29N-21HZ

Lat: 40.118964° Long: -104.789368° (NAD83)
Elevation: 4935 Feet

Surface Use: Rangeland

Nearest Building Unit: >1000' SW



Use our resources to find yours!
www.petro-fs.com
(303) 928-7128

Field Date: 09/05/2013
Drafting Date: 12/18/2013
Drafter: SMG
Revision: 3

Data Sources:
- Aerial courtesy of Anadarko Petroleum Corporation (2010)

Prepared for:

Anadarko
Petroleum Corporation
KERR-MCGEE OIL & GAS ONSHORE LP