

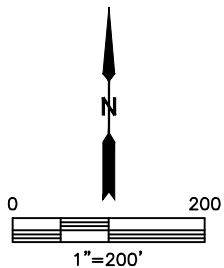
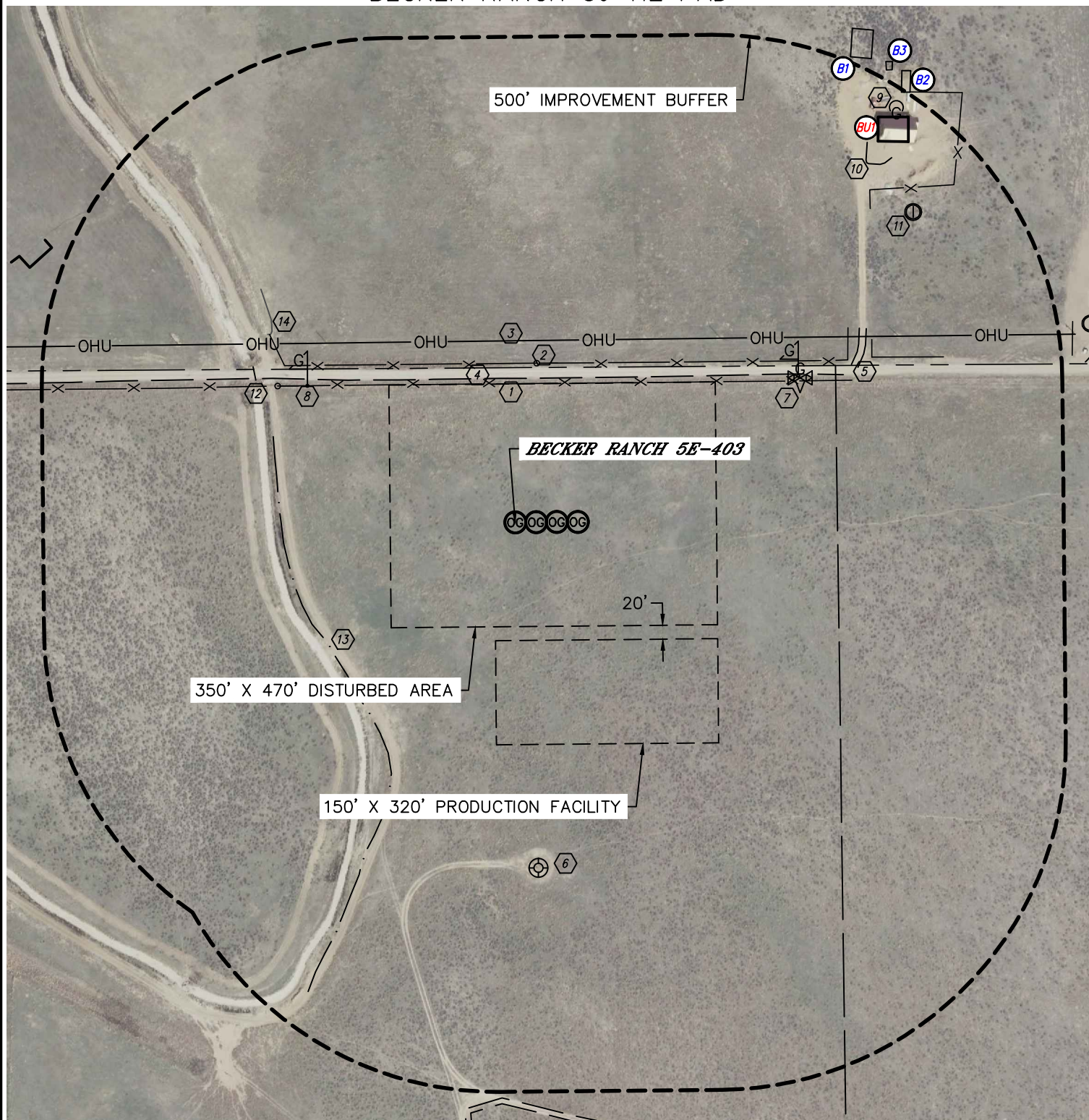


Lat40°, Inc. 1635 Foxtrail Drive, Suite 325 Loveland, CO 970-776-3321

LOCATION DRAWING

BECKER RANCH 5J-HZ PAD

SECTION: 5
TOWNSHIP: 3N
RANGE: 64W





LOCATION DRAWING

BECKER RANCH 5J-HZ PAD

SECTION: 5
TOWNSHIP: 3N
RANGE: 64W

IMPROVEMENTS:

(MEASURED FROM THE PROPOSED BECKER RANCH 5E-403 WELL LOCATION)

- ⓑ BUILDING UNIT BU1 758' NE
- ⓑ BUILDING B1 827' NE, B2 833' NE, B3 843' NE
- ① FENCE 200' & 229' N, 566' NE
- ② GATE 232' NE, 394' NW
- ③ ABOVE GROUND UTILITY 262' N
- ④ PUBLIC ROAD 208' N
- ⑤ ACCESS ROAD 539' NE
- ⑥ EX. WELL HEAD 499' S
- ⑦ GAS VALVE 460' NE
- ⑧ GAS MARKER 358' NW, 459' NE
- ⑨ PROPANE TANK 812' NE
- ⑩ WALL 725' NE
- ⑪ DOMESTIC WELL 727' NE
- ⑫ CULVERT 426' NW
- ⑬ CANAL 321' SW
- ⑭ WET AREA 444' NW

NEAREST CULTURAL ITEMS:

BUILDING: BU1 758' NE, BUILDING UNIT: BU1 758' NE, HIGH OCCUPANCY BUILDING UNIT: 5280'+,
DESIGNATED OUTSIDE ACTIVITY AREA: 5280'+, PUBLIC ROAD: 208' N, ABOVE GROUND UTILITY: 262' N,
RAILROAD: 5280'+, PROPERTY LINE: 223' N