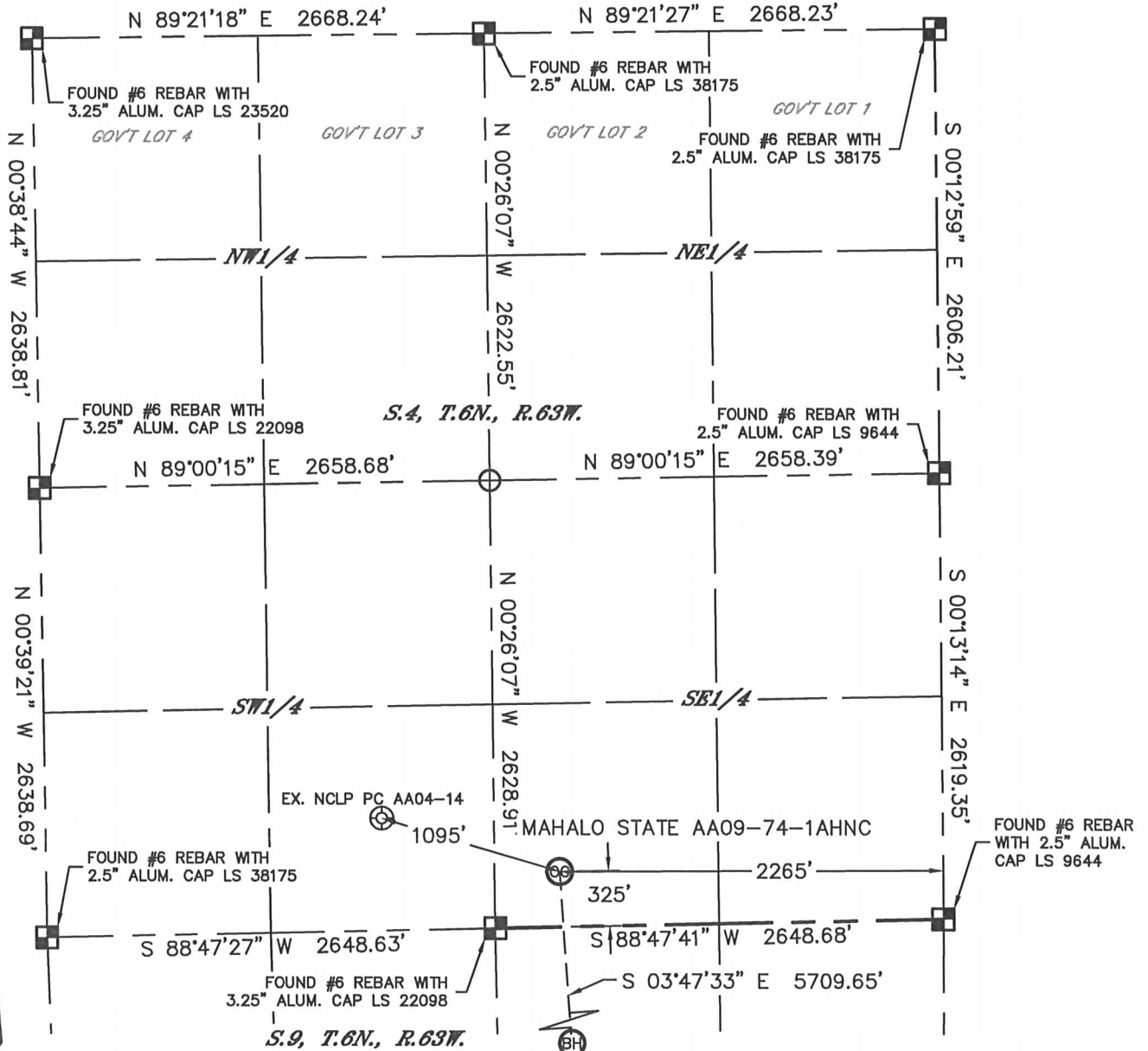




WELL LOCATION CERTIFICATE

THIS MAP DOES NOT REPRESENT A BOUNDARY SURVEY

SECTION: 4
TOWNSHIP: 6N
RANGE: 63W



In accordance with a request from Cody Ball with Noble Energy Inc. Lat40, Inc. has determined the surface location of the MAHALO STATE AA09-74-1AHNC to be 325' from the SOUTH line and 2265' from the EAST line as measured at right angles from the section lines of Section 4, Township 6 North, Range 63 West and the bottom hole to be 30' from the NORTH line and 1860' from the EAST line as measured at right angles from the section lines of Section 16, Township 6 North, Range 63 West of the Sixth Principal Meridian, County of Weld, State of Colorado.

I hereby state that this Well Location Certificate was prepared by me, or under my direct supervision, that the fieldwork was completed on 8/9/2013, for and on behalf of Noble Energy Inc. That this is not a Land Survey Plat or an Improvement Survey Plat, and that it is not to be relied upon for establishment of fence, building, or other future improvement lines.

- NOTE:
- 1) Bearings shown are Grid Bearings of the Colorado State Plane Coordinate System, North Zone, North American Datum 1983/2007. The lineal dimensions as contained herein are based upon the "U.S. Survey Foot."
 - 2) Ground elevations are based on an observed GPS elevation (NAVD 1988 DATUM).
 - 3) IMPROVEMENTS: See LOCATION DRAWING for all visible improvements within 500' of disturbed area.
 - 4) SURFACE USE: RANGELAND
 - 5) INSTRUMENT OPERATOR: BRIAN ROTTINGHAUS
 - 6) NEAREST EXISTING WELL: NCLP PC AA04-14, 1095'
- NEAREST CULTURAL ITEMS:
BUILDING: ±3195' SE
BUILDING UNIT: ±3195' SE
HIGH OCCUPANCY BUILDING UNIT: 5280'+
DESIGNATED OUTSIDE ACTIVITY AREA: 5280'+
PUBLIC ROAD: 1544' SE
ABOVE GROUND UTILITY: 1484' SE
RAILROAD: 5280'+
PROPERTY LINE: 325' S

SURFACE LOCATION
LAT: 40.50949°N
LONG: 104.44031°W
PDOP: 2.0
ELEV: 4694'
1/4,1/4: SW1/4SE1/4

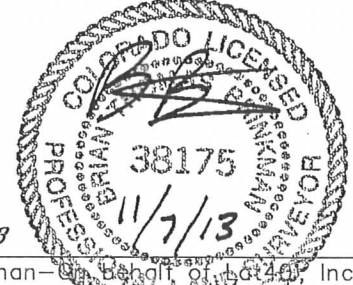
BOTTOM HOLE
LAT: 40.49384°N
LONG: 104.43920°W

LEGEND

- = ALIQUOT MONUMENT AS DESCRIBED
- = CALCULATED POSITION

SHEET 1 OF 3

Brian T. Brinkman—in behalf of Lat40, Inc.
Colorado Licensed Professional Land Surveyor No. 38175
DATE: 11/7/2013
PROJECT#: 2013042

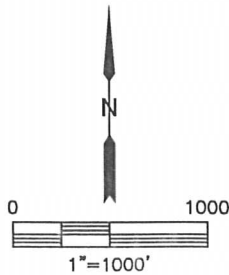
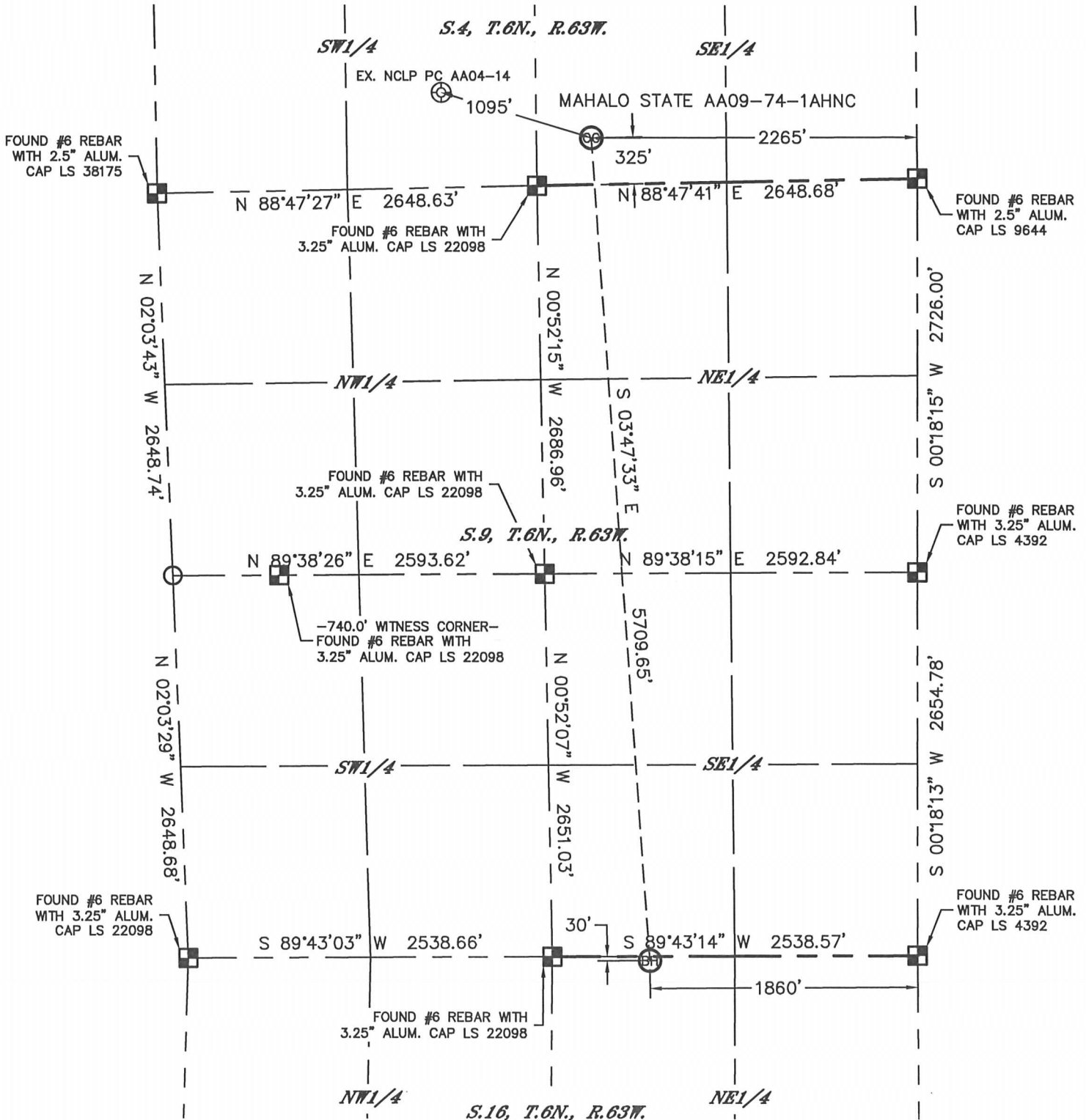




WELL LOCATION CERTIFICATE

THIS MAP DOES NOT REPRESENT A BOUNDARY SURVEY

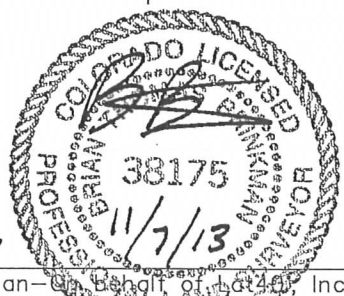
SECTION: 4
TOWNSHIP: 6N
RANGE: 63W



- LEGEND
- = ALIQUOT MONUMENT AS DESCRIBED
 - = CALCULATED POSITION

SHEET 2 OF 3

Brian T. Brinkman—*in behalf of* Lat40°, Inc.
 Colorado Licensed Professional Land Surveyor No. 38175
 DATE: 11/7/2013
 PROJECT#: 2013042



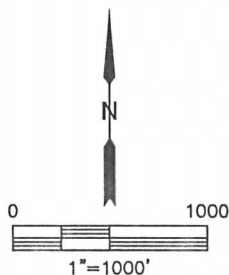
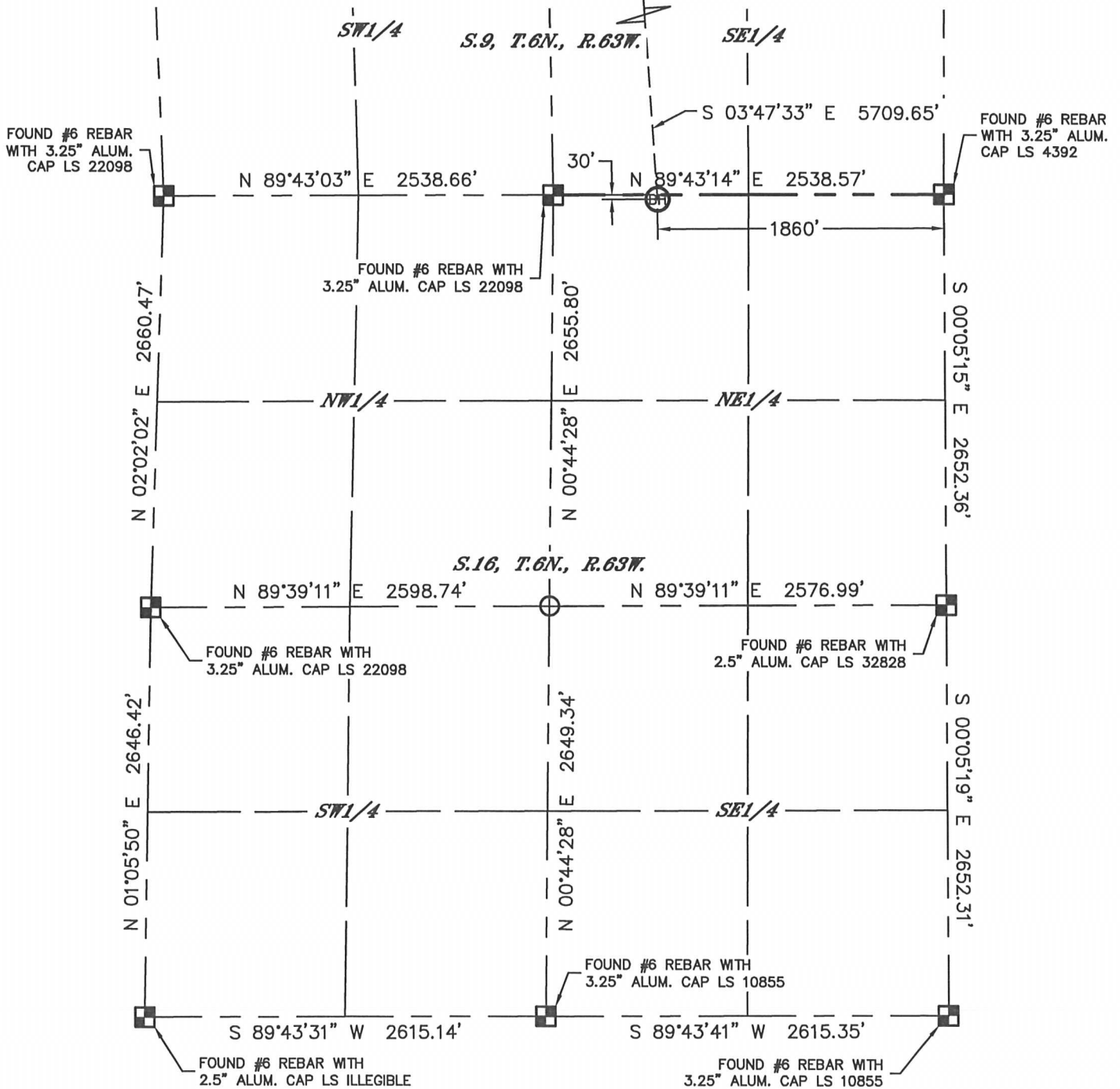


WELL LOCATION CERTIFICATE

THIS MAP DOES NOT REPRESENT A BOUNDARY SURVEY

SECTION: 4
TOWNSHIP: 6N
RANGE: 63W

MAHALO STATE AA09-74-1AHNC



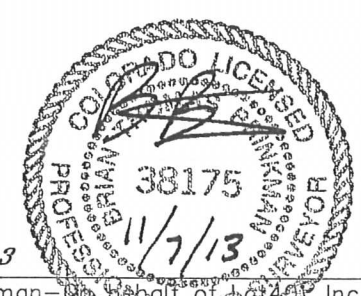
LEGEND

■ = ALIQUOT MONUMENT AS DESCRIBED

○ = CALCULATED POSITION

SHEET 3 OF 3

Brian T. Brinkman - in behalf of Lat40°, Inc.
 Colorado Licensed Professional Land Surveyor No. 38175
 DATE: 11/7/2013
 PROJECT#: 2013042

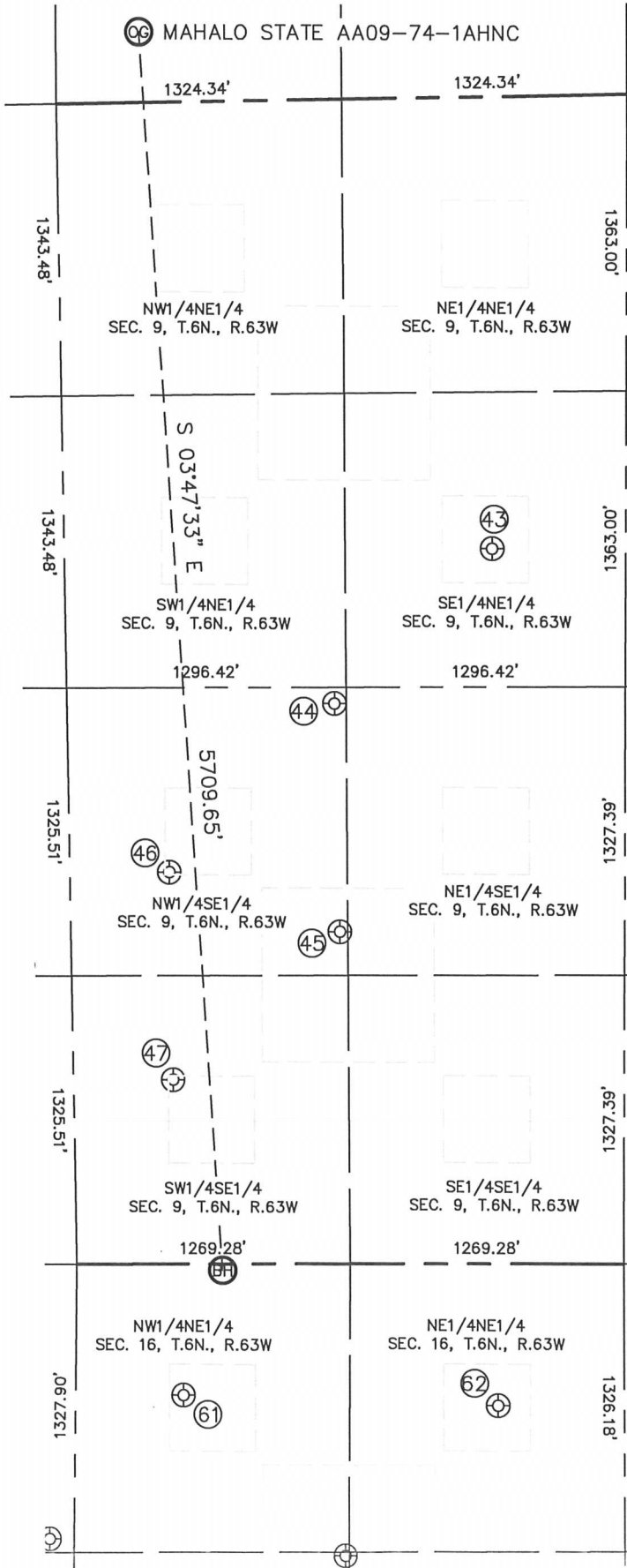




SITE SKETCH

MAHALO STATE AA09-74-1AHNC

SECTION: 4
TOWNSHIP: 6N
RANGE: 63W



WELL #	WELL NAME	SHL FOOTAGE		SHL LAT °	SHL LONG °	PDOP	ELEV (FT.)	1/4/1/4
		FNL	FSL					
43	BASHOR PC AA 9-8	2080	FEL	40.50293	-104.43454	1.9	4694	SENE
44	BASHOR PC AA 9-22	2578	FEL	40.50099	-104.43721	1.5	4691	NWSE
45	BASHOR PC AA 9-23	1527	FEL	40.49811	-104.43717	1.4	4691	NWSE
46	BASHOR 9-42	1801	FEL	40.49887	-104.44000	1.7	4689	NWSE
47	BASHOR 9-43	847	FEL	40.49625	-104.43998	1.7	4690	SWSE
61	BASHOR STATE AA 16-2	605	FEL	40.49227	-104.43989	1.8	4688	NWNE
62	BASHOR STATE AA 16-1	653	FEL	40.49211	-104.43464	1.9	4688	NENE

