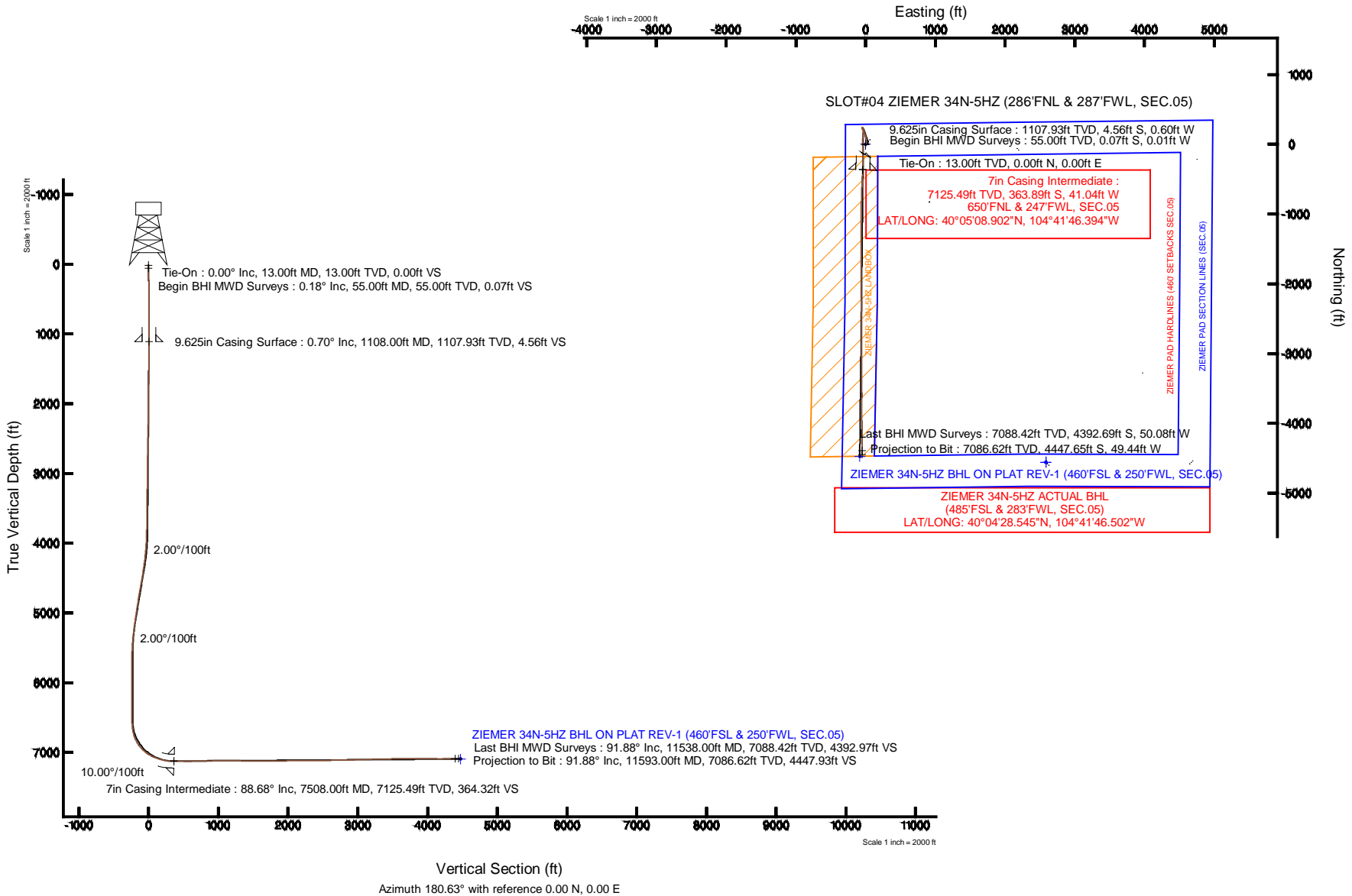


# KERR-MCGEE OIL & GAS ONSHORE LP

Location: COLORADO Slot: SLOT#04 ZIEMER 34N-5HZ (286°FNL & 287°FWL, SEC.05)  
 Field: WELD COUNTY (KERR MCGEE) Well: ZIEMER 34N-5HZ  
 Facility: SEC.05-T1N-R65W Wellbore: ZIEMER 34N-5HZ PWB

Plot reference wellpath is ZIEMER 34N-5HZ (REV-C.0) PWP

True vertical depths are referenced to ENSIGN 145 (13KB) (RKB)	Grid System: NAD83 / Lambert Colorado SP, Northern Zone (501), US feet
Measured depths are referenced to ENSIGN 145 (13KB) (RKB)	North Reference: True north
ENSGN 145 (13KB) (RKB) to Mean Sea Level: 4970 feet	Scale: True distance
Mean Sea Level to Mud line (At Slot: SLOT#04 ZIEMER 34N-5HZ (286°FNL & 287°FWL, SEC.05)): 0 feet	Depths are in feet
Coordinates are in feet referenced to Slot	Created by: precain on 29/Jan/2014



### REFERENCE WELLPATH IDENTIFICATION

Operator	<b>KERR-MCGEE OIL &amp; GAS ONSHORE LP</b>	Slot	<b>SLOT#04 ZIEMER 34N-5HZ (286'FNL &amp; 287'FWL, SEC.05)</b>
Area	<b>COLORADO</b>	Well	<b>ZIEMER 34N-5HZ</b>
Field	<b>WELD COUNTY (KERR MCGEE)</b>	Wellbore	<b>ZIEMER 34N-5HZ AWB</b>
Facility	<b>SEC.05-T1N-R65W</b>		

### REPORT SETUP INFORMATION

Projection System	<b>NAD83 / Lambert Colorado SP, Northern Zone (501), US feet</b>	Software System	<b>WellArchitect® 4.0.0</b>
North Reference	<b>True</b>	User	<b>Precain</b>
Scale	<b>0.999961</b>	Report Generated	<b>29/Jan/2014 at 10:02</b>
Convergence at slot	<b>n/a</b>	Database/Source file	<b>WellArchitectDB/ZIEMER_34N-5HZ_AWB.xml</b>

### WELLPATH LOCATION

	Local coordinates		Grid coordinates		Geographic coordinates	
	North[ft]	East[ft]	Easting[US ft]	Northing[US ft]	Latitude	Longitude
Slot Location	2271.35	-2322.57	3224933.03	1275487.40	<b>40°05'12.498"N</b>	<b>104°41'45.866"W</b>
Facility Reference Pt			<b>3227276.21</b>	<b>1273237.51</b>	40°04'50.053"N	104°41'15.984"W
Field Reference Pt			<b>3197771.84</b>	<b>1268891.29</b>	40°04'09.600"N	104°47'36.000"W

### WELLPATH DATUM

Calculation method	<b>Minimum curvature</b>	ENSIGN 145 (13'KB) (RKB) to Facility Vertical Datum	<b>4970.00ft</b>
Horizontal Reference Pt	<b>Slot</b>	ENSIGN 145 (13'KB) (RKB) to Mean Sea Level	<b>4970.00ft</b>
Vertical Reference Pt	<b>ENSIGN 145 (13'KB) (RKB)</b>	ENSIGN 145 (13'KB) (RKB) to Mud Line at Slot (SLOT#04 ZIEMER 34N-5HZ (286'FNL & 287'FWL, SEC.05))	<b>4970.00ft</b>
MD Reference Pt	<b>ENSIGN 145 (13'KB) (RKB)</b>	Section Origin	<b>N 0.00, E 0.00 ft</b>
Field Vertical Reference	<b>Mean Sea Level</b>	Section Azimuth	<b>180.63°</b>

REFERENCE WELLPATH IDENTIFICATION			
Operator	KERR-MCGEE OIL & GAS ONSHORE LP	Slot	SLOT#04 ZIEMER 34N-5HZ (286'FNL & 287'FWL, SEC.05)
Area	COLORADO	Well	ZIEMER 34N-5HZ
Field	WELD COUNTY (KERR MCGEE)	Wellbore	ZIEMER 34N-5HZ AWB
Facility	SEC.05-T1N-R65W		

WELLPATH DATA (111 stations) † = interpolated/extrapolated station										
MD [ft]	Inclination [°]	Azimuth [°]	TVD [ft]	Vert Sect [ft]	North [ft]	East [ft]	Latitude	Longitude	DLS [°/100ft]	Comments
0.00†	0.000	189.750	0.00	0.00	0.00	0.00	40°05'12.498"N	104°41'45.866"W	0.00	
13.00	0.000	189.750	13.00	0.00	0.00	0.00	40°05'12.498"N	104°41'45.866"W	0.00	Tie-On
55.00	0.180	189.750	55.00	0.07	-0.07	-0.01	40°05'12.497"N	104°41'45.866"W	0.43	Begin BHI MWD Surveys
145.00	0.590	179.290	145.00	0.67	-0.67	-0.03	40°05'12.491"N	104°41'45.866"W	0.46	
235.00	0.530	193.480	234.99	1.54	-1.54	-0.12	40°05'12.483"N	104°41'45.868"W	0.17	
325.00	0.590	201.350	324.99	2.38	-2.37	-0.39	40°05'12.475"N	104°41'45.871"W	0.11	
419.00	0.670	222.150	418.98	3.24	-3.23	-0.93	40°05'12.466"N	104°41'45.878"W	0.26	
512.00	0.750	226.010	511.98	4.08	-4.06	-1.73	40°05'12.458"N	104°41'45.888"W	0.10	
606.00	0.790	214.810	605.97	5.04	-5.02	-2.55	40°05'12.448"N	104°41'45.899"W	0.17	
699.00	0.770	215.480	698.96	6.09	-6.05	-3.28	40°05'12.438"N	104°41'45.908"W	0.02	
793.00	0.030	295.560	792.96	6.59	-6.55	-3.66	40°05'12.433"N	104°41'45.913"W	0.81	
886.00	0.700	46.890	885.95	6.19	-6.16	-3.27	40°05'12.437"N	104°41'45.908"W	0.77	
980.00	0.890	60.370	979.95	5.43	-5.40	-2.22	40°05'12.445"N	104°41'45.895"W	0.28	
1053.00	0.830	60.800	1052.94	4.88	-4.86	-1.26	40°05'12.450"N	104°41'45.882"W	0.08	
1169.00	0.580	84.540	1168.93	4.40	-4.40	0.05	40°05'12.455"N	104°41'45.865"W	0.33	
1544.00	0.590	49.170	1543.91	2.92	-2.96	3.40	40°05'12.469"N	104°41'45.822"W	0.09	
1918.00	0.680	14.160	1917.89	-0.51	0.46	5.40	40°05'12.502"N	104°41'45.796"W	0.10	
2291.00	0.860	359.470	2290.85	-5.47	5.40	5.92	40°05'12.551"N	104°41'45.790"W	0.07	
2662.00	0.920	15.730	2661.81	-11.12	11.05	6.70	40°05'12.607"N	104°41'45.780"W	0.07	
3022.00	1.190	42.670	3021.75	-16.69	16.58	10.02	40°05'12.662"N	104°41'45.737"W	0.15	
3382.00	0.600	32.200	3381.71	-21.07	20.93	13.56	40°05'12.705"N	104°41'45.692"W	0.17	
3742.00	0.930	29.850	3741.67	-25.23	25.05	16.02	40°05'12.746"N	104°41'45.660"W	0.09	
3832.00	1.570	345.710	3831.65	-27.06	26.88	16.08	40°05'12.764"N	104°41'45.659"W	1.23	
3922.00	2.350	343.160	3921.60	-30.01	29.84	15.24	40°05'12.793"N	104°41'45.670"W	0.87	
4012.00	3.640	0.530	4011.48	-34.63	34.47	14.73	40°05'12.839"N	104°41'45.677"W	1.74	
4102.00	4.780	359.410	4101.23	-41.23	41.07	14.72	40°05'12.904"N	104°41'45.677"W	1.27	
4192.00	6.090	354.180	4190.83	-49.73	49.57	14.19	40°05'12.988"N	104°41'45.683"W	1.55	
4282.00	7.830	354.180	4280.16	-60.56	60.42	13.09	40°05'13.095"N	104°41'45.698"W	1.93	
4372.00	8.730	345.830	4369.22	-73.26	73.14	10.79	40°05'13.221"N	104°41'45.727"W	1.67	
4462.00	9.410	341.680	4458.10	-86.82	86.75	6.81	40°05'13.355"N	104°41'45.778"W	1.05	
4552.00	10.440	342.170	4546.75	-101.51	101.50	2.00	40°05'13.501"N	104°41'45.840"W	1.15	
4642.00	11.100	343.780	4635.17	-117.54	117.58	-2.92	40°05'13.660"N	104°41'45.904"W	0.81	
4732.00	10.030	343.880	4723.64	-133.34	133.43	-7.51	40°05'13.817"N	104°41'45.963"W	1.19	
4822.00	9.190	343.360	4812.38	-147.71	147.84	-11.75	40°05'13.959"N	104°41'46.017"W	0.94	
4912.00	8.660	342.670	4901.29	-161.02	161.20	-15.82	40°05'14.091"N	104°41'46.070"W	0.60	
5003.00	9.050	340.630	4991.20	-174.26	174.49	-20.24	40°05'14.222"N	104°41'46.126"W	0.55	
5093.00	9.670	340.140	5080.00	-187.99	188.28	-25.15	40°05'14.359"N	104°41'46.190"W	0.69	
5183.00	8.890	334.600	5168.83	-201.32	201.67	-30.71	40°05'14.491"N	104°41'46.261"W	1.32	
5273.00	8.220	332.420	5257.82	-213.24	213.65	-36.67	40°05'14.609"N	104°41'46.338"W	0.83	
5363.00	6.120	331.350	5347.11	-223.10	223.57	-41.95	40°05'14.707"N	104°41'46.406"W	2.34	
5453.00	4.370	337.930	5436.74	-230.44	230.96	-45.54	40°05'14.780"N	104°41'46.452"W	2.05	
5543.00	2.920	341.260	5526.55	-235.77	236.30	-47.56	40°05'14.833"N	104°41'46.478"W	1.63	
5633.00	1.940	354.310	5616.47	-239.45	239.99	-48.45	40°05'14.870"N	104°41'46.489"W	1.24	
5723.00	0.860	64.910	5706.45	-241.25	241.79	-47.99	40°05'14.887"N	104°41'46.483"W	2.05	
5813.00	0.370	39.110	5796.44	-241.78	242.31	-47.19	40°05'14.893"N	104°41'46.473"W	0.61	

REFERENCE WELLPATH IDENTIFICATION			
Operator	KERR-MCGEE OIL & GAS ONSHORE LP	Slot	SLOT#04 ZIEMER 34N-5HZ (286'FNL & 287'FWL, SEC.05)
Area	COLORADO	Well	ZIEMER 34N-5HZ
Field	WELD COUNTY (KERR MCGEE)	Wellbore	ZIEMER 34N-5HZ AWB
Facility	SEC.05-T1N-R65W		

WELLPATH DATA (111 stations) † = interpolated/extrapolated station										
MD [ft]	Inclination [°]	Azimuth [°]	TVD [ft]	Vert Sect [ft]	North [ft]	East [ft]	Latitude	Longitude	DLS [°/100ft]	Comments
5903.00	0.280	147.710	5886.44	-241.82	242.35	-46.89	40°05'14.893"N	104°41'46.469"W	0.59	
6263.00	0.500	109.950	6246.43	-240.56	241.07	-44.94	40°05'14.880"N	104°41'46.444"W	0.09	
6512.00	0.770	131.170	6495.42	-239.11	239.59	-42.66	40°05'14.866"N	104°41'46.415"W	0.14	
6578.00	2.030	157.420	6561.40	-237.75	238.22	-41.88	40°05'14.852"N	104°41'46.405"W	2.09	
6623.00	5.020	169.850	6606.31	-235.08	235.55	-41.23	40°05'14.826"N	104°41'46.396"W	6.82	
6668.00	7.700	175.560	6651.03	-230.14	230.60	-40.65	40°05'14.777"N	104°41'46.389"W	6.11	
6713.00	10.710	175.600	6695.44	-222.98	223.43	-40.09	40°05'14.706"N	104°41'46.382"W	6.69	
6755.00	14.090	176.640	6736.46	-213.98	214.43	-39.49	40°05'14.617"N	104°41'46.374"W	8.06	
6800.00	19.320	176.710	6779.54	-201.09	201.52	-38.75	40°05'14.489"N	104°41'46.365"W	11.62	
6846.00	25.070	178.440	6822.12	-183.74	184.17	-38.04	40°05'14.318"N	104°41'46.355"W	12.58	
6891.00	30.560	179.530	6861.90	-162.76	163.18	-37.69	40°05'14.111"N	104°41'46.351"W	12.25	
6936.00	35.910	181.250	6899.53	-138.11	138.53	-37.88	40°05'13.867"N	104°41'46.353"W	12.07	
6981.00	40.390	182.300	6934.91	-110.32	110.75	-38.76	40°05'13.592"N	104°41'46.365"W	10.06	
7026.00	46.790	181.320	6967.48	-79.32	79.76	-39.72	40°05'13.286"N	104°41'46.377"W	14.30	
7071.00	52.560	179.520	6996.59	-45.03	45.47	-39.95	40°05'12.947"N	104°41'46.380"W	13.18	
7116.00	56.640	180.150	7022.66	-8.36	8.80	-39.85	40°05'12.585"N	104°41'46.379"W	9.14	
7161.00	61.310	178.410	7045.84	30.18	-29.75	-39.35	40°05'12.204"N	104°41'46.372"W	10.89	
7206.00	66.100	177.460	7065.77	70.46	-70.05	-37.89	40°05'11.806"N	104°41'46.353"W	10.81	
7251.00	70.400	178.810	7082.45	112.21	-111.82	-36.54	40°05'11.393"N	104°41'46.336"W	9.95	
7296.00	74.190	179.920	7096.13	155.06	-154.68	-36.07	40°05'10.969"N	104°41'46.330"W	8.74	
7341.00	77.750	180.390	7107.04	198.71	-198.33	-36.19	40°05'10.538"N	104°41'46.332"W	7.98	
7386.00	80.310	181.090	7115.60	242.88	-242.50	-36.76	40°05'10.102"N	104°41'46.339"W	5.89	
7431.00	84.540	181.540	7121.53	287.48	-287.08	-37.78	40°05'09.661"N	104°41'46.352"W	9.45	
7468.00	87.410	182.600	7124.13	324.37	-323.96	-39.12	40°05'09.297"N	104°41'46.369"W	8.27	
7508.00†	88.678	182.921	7125.49	364.32	-363.89	-41.04	40°05'08.902"N	104°41'46.394"W	3.27	7" Casing Point
7539.00	89.660	183.170	7125.94	395.29	-394.84	-42.69	40°05'08.596"N	104°41'46.415"W	3.27	
7629.00	89.690	182.840	7126.45	485.21	-484.72	-47.41	40°05'07.708"N	104°41'46.476"W	0.37	
7719.00	90.000	182.460	7126.70	575.15	-574.62	-51.57	40°05'06.819"N	104°41'46.529"W	0.54	
7809.00	90.640	182.170	7126.19	665.11	-664.55	-55.20	40°05'05.931"N	104°41'46.576"W	0.78	
7899.00	91.350	181.820	7124.63	755.07	-754.48	-58.34	40°05'05.042"N	104°41'46.617"W	0.88	
7989.00	92.240	181.620	7121.81	845.01	-844.39	-61.04	40°05'04.154"N	104°41'46.651"W	1.01	
8079.00	91.500	180.960	7118.87	934.95	-934.32	-63.06	40°05'03.265"N	104°41'46.677"W	1.10	
8169.00	90.640	180.460	7117.19	1024.94	-1024.30	-64.18	40°05'02.376"N	104°41'46.692"W	1.11	
8259.00	89.320	179.890	7117.22	1114.93	-1114.29	-64.45	40°05'01.486"N	104°41'46.695"W	1.60	
8349.00	89.410	179.960	7118.22	1204.92	-1204.29	-64.33	40°05'00.597"N	104°41'46.694"W	0.13	
8439.00	89.320	180.000	7119.22	1294.91	-1294.28	-64.30	40°04'59.708"N	104°41'46.693"W	0.11	
8619.00	89.190	179.890	7121.56	1474.88	-1474.27	-64.13	40°04'57.929"N	104°41'46.691"W	0.09	
8709.00	89.930	180.060	7122.25	1564.87	-1564.26	-64.09	40°04'57.040"N	104°41'46.691"W	0.84	
8889.00	89.070	179.020	7123.82	1744.83	-1744.25	-62.64	40°04'55.261"N	104°41'46.672"W	0.75	
8979.00	91.100	179.860	7123.69	1834.80	-1834.24	-61.76	40°04'54.372"N	104°41'46.661"W	2.44	
9069.00	92.050	180.140	7121.21	1924.76	-1924.20	-61.76	40°04'53.483"N	104°41'46.661"W	1.10	
9160.00	90.770	179.870	7118.98	2015.73	-2015.17	-61.77	40°04'52.584"N	104°41'46.661"W	1.44	
9250.00	90.740	179.630	7117.79	2105.71	-2105.16	-61.38	40°04'51.694"N	104°41'46.656"W	0.27	
9340.00	90.890	179.670	7116.51	2195.69	-2195.15	-60.83	40°04'50.805"N	104°41'46.649"W	0.17	
9430.00	90.890	179.790	7115.11	2285.66	-2285.14	-60.41	40°04'49.916"N	104°41'46.643"W	0.13	

### REFERENCE WELLPATH IDENTIFICATION

Operator	KERR-MCGEE OIL & GAS ONSHORE LP	Slot	SLOT#04 ZIEMER 34N-5HZ (286'FNL & 287'FWL, SEC.05)
Area	COLORADO	Well	ZIEMER 34N-5HZ
Field	WELD COUNTY (KERR MCGEE)	Wellbore	ZIEMER 34N-5HZ AWB
Facility	SEC.05-T1N-R65W		

### WELLPATH DATA (111 stations)

MD [ft]	Inclination [°]	Azimuth [°]	TVD [ft]	Vert Sect [ft]	North [ft]	East [ft]	Latitude	Longitude	DLS [°/100ft]	Comments
9610.00	89.880	179.210	7113.90	2465.62	-2465.13	-58.83	40°04'48.137"N	104°41'46.623"W	0.65	
9700.00	90.680	179.730	7113.46	2555.60	-2555.12	-58.00	40°04'47.248"N	104°41'46.612"W	1.06	
9790.00	91.230	179.930	7111.96	2645.58	-2645.11	-57.74	40°04'46.359"N	104°41'46.609"W	0.65	
9880.00	91.110	179.940	7110.12	2735.55	-2735.09	-57.63	40°04'45.469"N	104°41'46.607"W	0.13	
10060.00	91.110	179.500	7106.64	2915.50	-2915.05	-56.75	40°04'43.691"N	104°41'46.596"W	0.24	
10240.00	92.130	179.310	7101.55	3095.38	-3094.97	-54.89	40°04'41.913"N	104°41'46.572"W	0.58	
10331.00	91.540	179.820	7098.64	3186.32	-3185.92	-54.19	40°04'41.014"N	104°41'46.563"W	0.86	
10421.00	91.970	179.660	7095.88	3276.27	-3275.87	-53.79	40°04'40.125"N	104°41'46.558"W	0.51	
10511.00	90.830	180.200	7093.68	3366.23	-3365.85	-53.68	40°04'39.236"N	104°41'46.557"W	1.40	
10601.00	91.420	180.090	7091.91	3456.21	-3455.83	-53.90	40°04'38.347"N	104°41'46.559"W	0.67	
10691.00	91.450	179.500	7089.66	3546.17	-3545.80	-53.58	40°04'37.458"N	104°41'46.555"W	0.66	
10781.00	90.740	180.500	7087.94	3636.15	-3635.78	-53.58	40°04'36.569"N	104°41'46.555"W	1.36	
10872.00	89.970	179.960	7087.38	3727.14	-3726.78	-53.95	40°04'35.669"N	104°41'46.560"W	1.03	
10961.00	90.300	179.990	7087.17	3816.14	-3815.78	-53.91	40°04'34.790"N	104°41'46.559"W	0.37	
11051.00	88.980	179.840	7087.73	3906.13	-3905.77	-53.78	40°04'33.900"N	104°41'46.558"W	1.48	
11141.00	89.040	179.330	7089.29	3996.10	-3995.76	-53.12	40°04'33.011"N	104°41'46.549"W	0.57	
11231.00	88.910	179.140	7090.90	4086.06	-4085.73	-51.92	40°04'32.122"N	104°41'46.534"W	0.26	
11321.00	90.060	179.790	7091.71	4176.03	-4175.72	-51.08	40°04'31.233"N	104°41'46.523"W	1.47	
11411.00	90.610	179.950	7091.18	4266.02	-4265.72	-50.88	40°04'30.343"N	104°41'46.520"W	0.64	
11538.00	91.880	179.330	7088.42	4392.97	-4392.69	-50.08	40°04'29.089"N	104°41'46.510"W	1.11	Last BHI MWD Surveys
11593.00	91.880	179.330	7086.62	4447.93	-4447.65	-49.44	40°04'28.545"N	104°41'46.502"W	0.00	Projection to Bit

### HOLE & CASING SECTIONS - Ref Wellbore: ZIEMER 34N-5HZ AWB Ref Wellpath: ZIEMER 34N-5HZ AWP

String/Diameter	Start MD [ft]	End MD [ft]	Interval [ft]	Start TVD [ft]	End TVD [ft]	Start N/S [ft]	Start E/W [ft]	End N/S [ft]	End E/W [ft]
13.5in Open Hole	13.00	1120.00	1107.00	13.00	1119.93	0.00	0.00	-4.51	-0.47
9.625in Casing Surface	13.00	1108.00	1095.00	13.00	1107.93	0.00	0.00	-4.56	-0.60
8.75in Open Hole	1120.00	7520.00	6400.00	1119.93	7125.73	-4.51	-0.47	-375.87	-41.66
7in Casing Intermediate	13.00	7508.00	7495.00	13.00	7125.49	0.00	0.00	-363.89	-41.04
6.125in Open Hole	7520.00	11593.00	4073.00	7125.73	7086.62	-375.87	-41.66	-4447.65	-49.44

# Actual Wellpath Report

ZIEMER 34N-5HZ AWP

Page 5 of 6

REFERENCE WELLPATH IDENTIFICATION			
Operator	KERR-MCGEE OIL & GAS ONSHORE LP	Slot	SLOT#04 ZIEMER 34N-5HZ (286'FNL & 287'FWL, SEC.05)
Area	COLORADO	Well	ZIEMER 34N-5HZ
Field	WELD COUNTY (KERR MCGEE)	Wellbore	ZIEMER 34N-5HZ AWB
Facility	SEC.05-T1N-R65W		

TARGETS									
Name	MD [ft]	TVD [ft]	North [ft]	East [ft]	Grid East [US ft]	Grid North [US ft]	Latitude	Longitude	Shape
ZIEMER PAD HARDLINES LINES (460' SETBACKS SEC.05)		4970.00	-4556.45	2585.05	3227559.17	1270954.76	40°04'27.469"N	104°41'12.613"W	polygon
ZIEMER PAD SECTION LINES (SEC.05)		4970.00	-4556.45	2585.05	3227559.17	1270954.76	40°04'27.469"N	104°41'12.613"W	polygon
ZIEMER 34N-5HZ BHL ON PLAT REV-1 (460'FSL & 250'FWL, SEC.05)		7094.00	-4472.78	-83.43	3224890.16	1271014.23	<b>40°04'28.297"N</b>	<b>104°41'46.939"W</b>	point
ZIEMER 34N-5HZ LANDBOX		7094.00	0.00	0.00	3224933.03	1275487.40	40°05'12.498"N	104°41'45.866"W	polygon

WELLPATH COMPOSITION - Ref Wellbore: ZIEMER 34N-5HZ AWB Ref Wellpath: ZIEMER 34N-5HZ AWP				
Start MD [ft]	End MD [ft]	Positional Uncertainty Model	Log Name/Comment	Wellbore
13.00	1053.00	NaviTrak (MagCorr)	BHI MWD SURVEYS 13 1/2" HOLE <55-1053>	ZIEMER 34N-5HZ AWB
1053.00	7468.00	NaviTrak (MagCorr)	BHI MWD SURVEYS 8 3/4" HOLE <1169-7468>	ZIEMER 34N-5HZ AWB
7468.00	11538.00	NaviTrak (MagCorr)	BHI MWD SURVEYS 6 1/8" HOLE <7539-11538>	ZIEMER 34N-5HZ AWB
11538.00	11593.00	Blind Drilling (std)	Projection to bit	ZIEMER 34N-5HZ AWB

# Actual Wellpath Report

ZIEMER 34N-5HZ AWP

Page 6 of 6

## REFERENCE WELLPATH IDENTIFICATION

Operator	KERR-MCGEE OIL & GAS ONSHORE LP	Slot	SLOT#04 ZIEMER 34N-5HZ (286'FNL & 287'FWL, SEC.05)
Area	COLORADO	Well	ZIEMER 34N-5HZ
Field	WELD COUNTY (KERR MCGEE)	Wellbore	ZIEMER 34N-5HZ AWB
Facility	SEC.05-T1N-R65W		

## WELLPATH COMMENTS

MD [ft]	Inclination [°]	Azimuth [°]	TVD [ft]	Comment
13.00	0.000	189.750	13.00	Tie-On
55.00	0.180	189.750	55.00	Begin BHI MWD Surveys
7508.00	88.678	182.921	7125.49	7" Casing Point
11538.00	91.880	179.330	7088.42	Last BHI MWD Surveys
11593.00	91.880	179.330	7086.62	Projection to Bit