

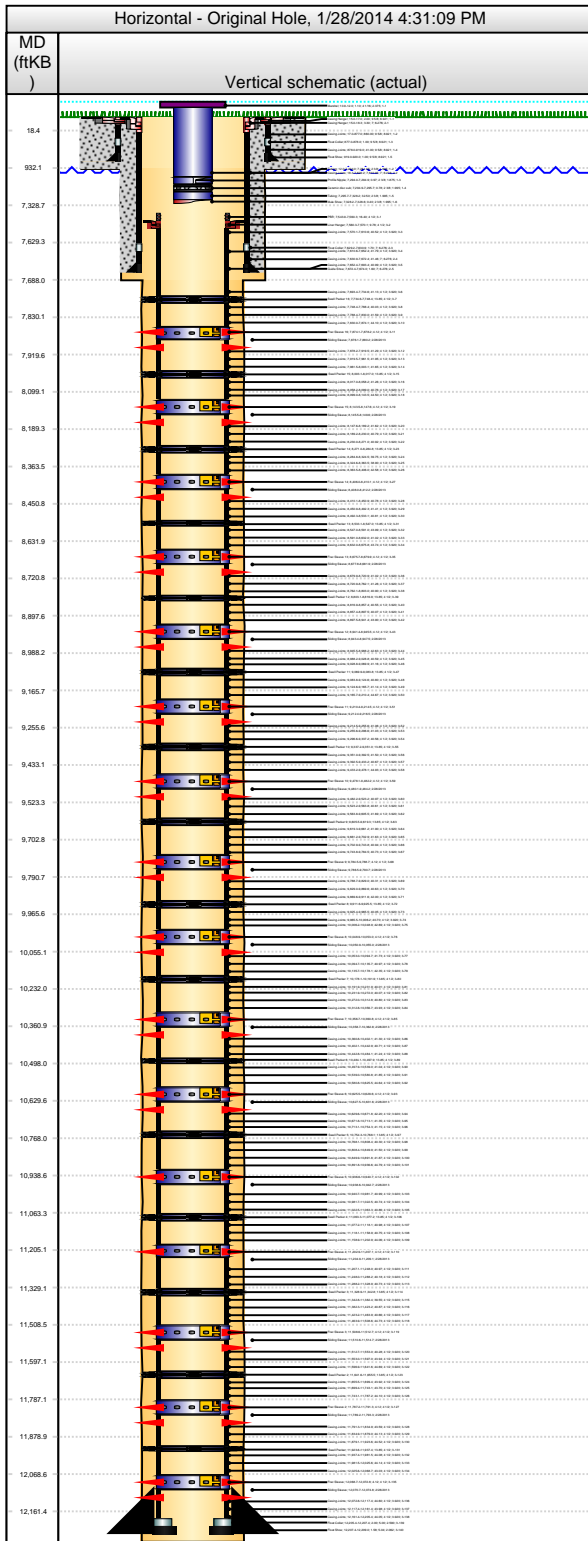


## Downhole Well Profile

Well Name: Simonsen 11-421

API 05123359760000	Surface Legal Location NWNW 12 6N 67W	Field Name Wattenberg	State CO
Well Configuration Type Horizontal	Ground Elevation (ft) 4,848.00	Original KB Elevation (ft) 4,863.00	KB-Ground Distance (ft) 15.00

Type							
Des	Make	Model	WP (psi)	Service	WP Top (psi)	Top Ring Gasket	Bore Min (in)



Casing Strings					
Csg Des	OD (in)	Wt/Len (lb/ft)	Grade	Top Thread	Set Depth (ftKB)
Surface	9 5/8	36.00	J-55		920.0
Intermediate	7	26.00	P-110		7,674.0
Liner	4 1/2	13.50	P-110		12,209.0

Perforations			
Date	Top (ftKB)	Btm (ftKB)	Zone
2/28/2013	7,876.1	7,880.2	Codell, Original Hole
2/28/2013	8,145.5	8,149.6	Codell, Original Hole
2/28/2013	8,408.0	8,412.2	Codell, Original Hole
2/28/2013	8,677.8	8,681.9	Codell, Original Hole
2/28/2013	8,943.4	8,947.5	Codell, Original Hole
2/28/2013	9,212.4	9,216.5	Codell, Original Hole
2/28/2013	9,480.1	9,484.2	Codell, Original Hole
2/28/2013	9,786.5	9,790.7	Codell, Original Hole
2/28/2013	10,050.9	10,055.0	Codell, Original Hole
2/28/2013	10,358.7	10,362.8	Codell, Original Hole
2/28/2013	10,627.5	10,631.6	Codell, Original Hole
2/28/2013	10,938.6	10,942.7	Codell, Original Hole
2/28/2013	11,205.0	11,209.1	Codell, Original Hole
2/28/2013	11,510.6	11,514.7	Codell, Original Hole
2/28/2013	11,789.2	11,793.3	Codell, Original Hole
2/28/2013	12,070.7	12,074.8	Codell, Original Hole

Tubing - Production set at 7,328.6ftKB on 3/15/2013 16:30							
Tubing Description		Run Date	String Length (ft)		Set Depth (ftKB)		
Tubing - Production		3/15/2013	7,317.70		7,328.6		
Item Des	Jts	Make	Model	OD (in)	Wt (lb/ft)	Grade	Len (ft)
Mandrel	1			4 1/16	4.70	N-80	1.10
Tubing	228		T&C Upset	2 3/8	4.70	J-55	7,281.95
Profile Nipple	1			2 3/8	4.70	N-80	0.97
Ceramic disc sub	1			2 3/8	4.70	N-80	0.78
Tubing	1		T&C Upset	2 3/8	4.70	J-55	32.50
Mule Shoe	1			2 3/8	4.70	N-80	0.40

Rod String: <des> on <dtmrun>							
Rod Description		Run Date	String Length (ft)		Set Depth (ftKB)		
Item Des	Jts	Make	Model	OD (in)	Wt (lb/ft)	Grade	Len (ft)