

RMWS

ROCKY MOUNTAIN WIRELINE SERVICE

CEMENT BOND LOG

GAMMA RAY / CCL

Company

BERRY PETROLEUM COMPANY

Well

CHEVRON 11-342D

Field

N. PARACHUTE

County

GARFIELD

State

COLORADO

Location:

API #: 05-045-13552

Other Services

SEC

12

TWP

6S

RGE

97W

Elevation

8129

Elevation

8157

Log Measured From

K.B.

Fl Above PD

23'

GL

8129

Date

01-28-2014

Run Number

ONE

Depth

4330'

Present Depth

4330'

Depth Logger

2190'

Bottom Logged Interval

2190'

Top Log Interval

2000'

Fluid Level

542'

Type Fluid

WATER

Max. Recorded Temp

N/A

Estimated Cement Top

2200'

Equipment Number

299

Location

GRAND JCT.

Recorded By

MCBRIDGM

Witnessed By

MIC SNOW

FERNANDEZ

Run Number

Bit

From

To

Size

4.50"

Weight

11.0#

SURFACE

From

To

<<< Fold Here >>>

All interpretations are opinions based on inferences from electrical or other measurements and we cannot and do not guarantee the accuracy or correctness of any interpretation, and we shall not, except in the case of gross or willful negligence on our part, be liable or responsible for any loss, costs, damages, or expenses incurred or sustained by anyone resulting from any interpretation made by any of our officers, agents or employees. These interpretations are also subject to our general terms and conditions set out in our current Price Schedule.

WARRIOR 7.0 SOFTWARE - Comments

NOTE: THIS LOG IS CORRELATED WITH A SCHLUMBERGER CEMENT BOND LOG DATED 04-16-2008
MAIN PASS = 5" = 100'
CASING PSI = STATIC

Database File: 012814_berry_chevron11-342d_cbl.db

Dataset Pathname: mainpas/pass1

Dataset Creation: Tue Jan 28 18:21:06 2014 by Log SCH 120430

Calibration Report

Gamma Ray Calibration Report

Serial Number: TEKCO234_352

Tool Model: TEKCO234

Performed: Tue Oct 30 09:17:24 2012

Calibrator Value: 1.0

Background Reading: 0.0

Calibrator Reading: 1.0

Sensitivity: 0.7000

Calibrator Value: 1.0

Background Reading: 0.0

Calibrator Reading: 1.0

Sensitivity: 0.7000

CBL Calibration Report

Serial Number: TEKCO_8009

Tool Model: TEKCO

Performed: Tue Jan 28 17:59:56 2014

Depth: 2796.717

Casing Diameter: 4.500

3' Spacing

5' Spacing

Signal Zero: 1.000

Calibrated Amplitude: 81.196

Reading at Signal Zero: -0.000

Gain: 54.821

Offset: 1.005

Signal Zero: 1.000

Calibrated Amplitude: 81.196

Reading at Signal Zero: -0.010

Gain: 45.420

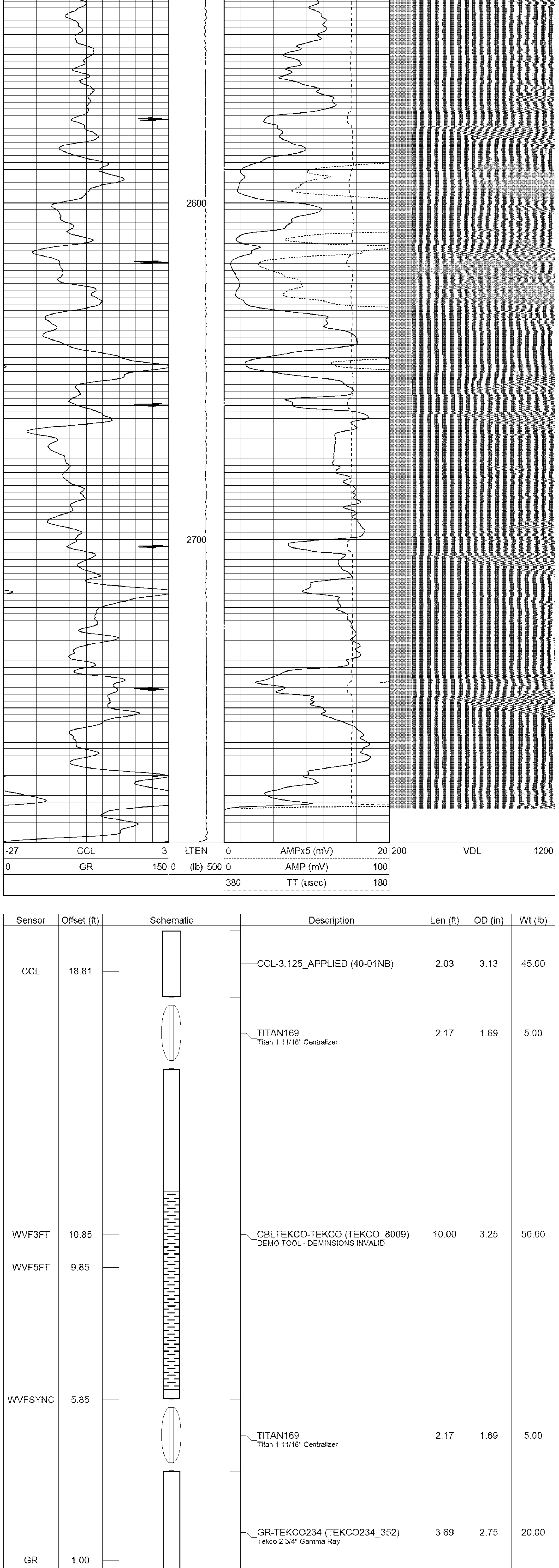
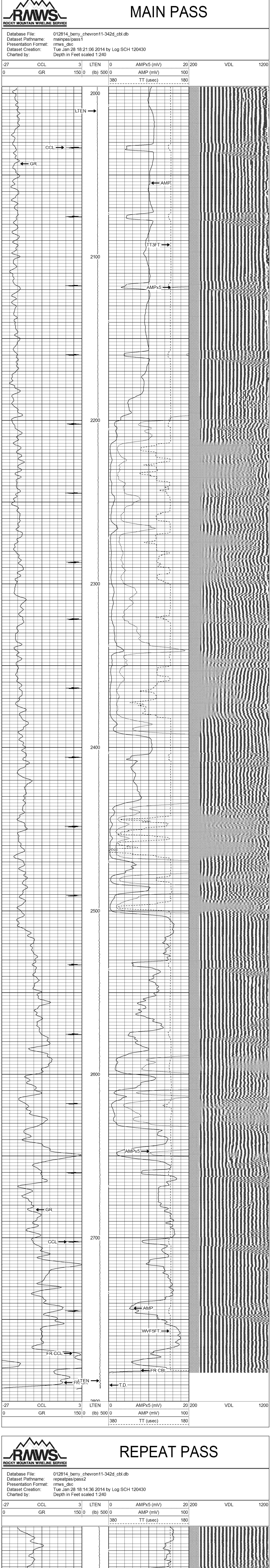
Offset: 1.437

mV

mV

V

V



Sensor	Offset (ft)	Schematic	Description	Len (ft)	OD (in)	Wt (lb)
CCL	18.81		CCL-3.125 APPLIED (40-01NB)	2.03	3.13	45.00
			TITAN169 Titan 1 11/16" Centralizer	2.17	1.69	5.00
WVF3FT	10.85		CBLTEKCO-TEKCO (TEKCO_8009) DEMO TOOL - DIMENSIONS INVALID	10.00	3.25	50.00
WVF5FT	9.85					
WVFSYNC	5.85		TITAN169 Titan 1 11/16" Centralizer	2.17	1.69	5.00
GR	1.00		GR-TEKCO234 (TEKCO234_352) Tekco 2 3/4" Gamma Ray	3.69	2.75	20.00

Dataset: 012814_berry_chevron11-342d_cbl.db; field/well/mainpas/pass1

Total Length: 20.05 ft

Total Weight: 125.00 lb

O.D.: 3.25 in

RMWS

ROCKY MOUNTAIN WIRELINE SERVICE

Company

BERRY PETROLEUM COMPANY

Well

CHEVRON 11-342D

Field

N. PARACHUTE

County

GARFIELD

State

COLORADO