

# BONANZA CREEK OIL COMPANY

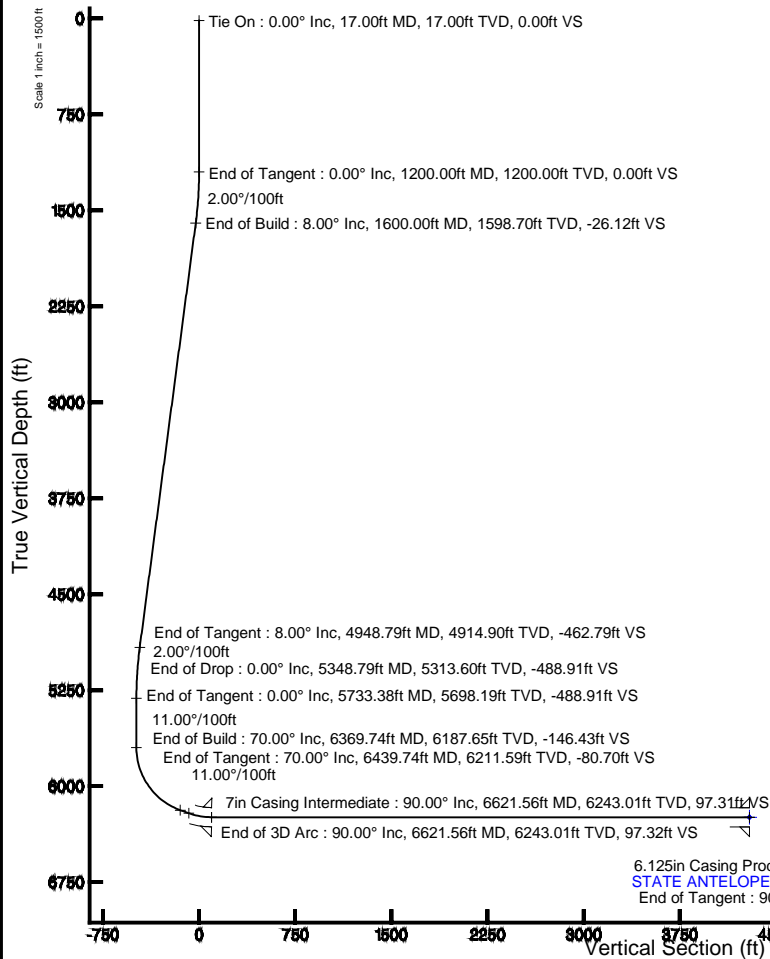
Location: COLORADO Slot: SLOT#06 STATE ANTELOPE P41-T44-32HNB (508'FNL & 1140'FEL, SEC.32)  
Field: WELD COUNTY Well: STATE ANTELOPE P41-T44-32HNB  
Facility: SEC.32-T5N-R62W Wellbore: STATE ANTELOPE P41-T44-32HNB PWB

Plot reference wellpath is STATE ANTELOPE P41-T44-32HNB (REV-A.0) PWP

True vertical depths are referenced to RIG (RKB)	Grid System: NAD83 / Lambert Colorado SP, Northern Zone (501), US feet
Measured depths are referenced to RIG (RKB)	North Reference: True north
RIG (RKB) to Mean Sea Level: 4590 feet	Scale: True distance
Mean Sea Level to Mud line (At Slot: SLOT#06 STATE ANTELOPE P41-T44-32HNB (508'FNL & 1140'FEL, SEC.32)): 0 feet	Depths are in feet
Coordinates are in feet referenced to Slot	Created by: guenaler on 1/17/2014

## Location Information

Facility Name			Grid East (US ft)	Grid North (US ft)	Latitude	Longitude
SEC.32-T5N-R62W			3320239.453	1376843.336	40°21'43.704"N	104°21'02.808"W
Slot	Local N (ft)	Local E (ft)	Grid East (US ft)	Grid North (US ft)	Latitude	Longitude
SLOT#06 STATE ANTELOPE P41-T44-32HNB (508'FNL & 1140'FEL, SEC.32)	-39.96	2352.05	3322591.717	1376833.859	40°21'43.308"N	104°20'32.424"W
RIG (RKB) to Mud line (At Slot: SLOT#06 STATE ANTELOPE P41-T44-32HNB (508'FNL & 1140'FEL, SEC.32))					4590ft	
Mean Sea Level to Mud line (At Slot: SLOT#06 STATE ANTELOPE P41-T44-32HNB (508'FNL & 1140'FEL, SEC.32))					0ft	
RIG (RKB) to Mean Sea Level					4590ft	



## Well Profile Data

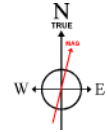
Design Comment	MD (ft)	Inc (°)	Az (°)	TVD (ft)	Local N (ft)	Local E (ft)	DLS (°/100ft)	VS (ft)
Tie On	17.00	0.000	18.450	17.00	0.00	0.00	0.00	0.00
End of Tangent	1200.00	0.000	18.450	1200.00	0.00	0.00	0.00	0.00
End of Build	1600.00	8.000	18.450	1598.70	26.45	8.82	2.00	-26.12
End of Tangent	4948.79	8.000	18.450	4914.90	468.55	156.32	0.00	-462.79
End of Drop	5348.79	0.000	180.175	5313.60	495.00	165.14	2.00	-488.91
End of Tangent	5733.38	0.000	180.175	5698.19	495.00	165.14	0.00	-488.91
End of Build	6369.74	70.000	180.175	6187.65	152.28	164.10	11.00	-146.43
End of Tangent	6439.74	70.000	180.175	6211.59	86.50	163.90	0.00	-80.70
End of 3D Arc	6621.56	90.000	180.175	6243.01	-91.65	163.35	11.00	97.32
End of Tangent	10821.50	90.000	180.175	6243.00	-4291.56	150.51	0.00	4294.20

## Survey Program

Start MD (ft)	End MD (ft)	Tool	Model	Log Name/Comment	Wellbore
17.00	10821.50	NavTrak	NavTrak (Standard)		STATE ANTELOPE P41-T44-32HNB PWB

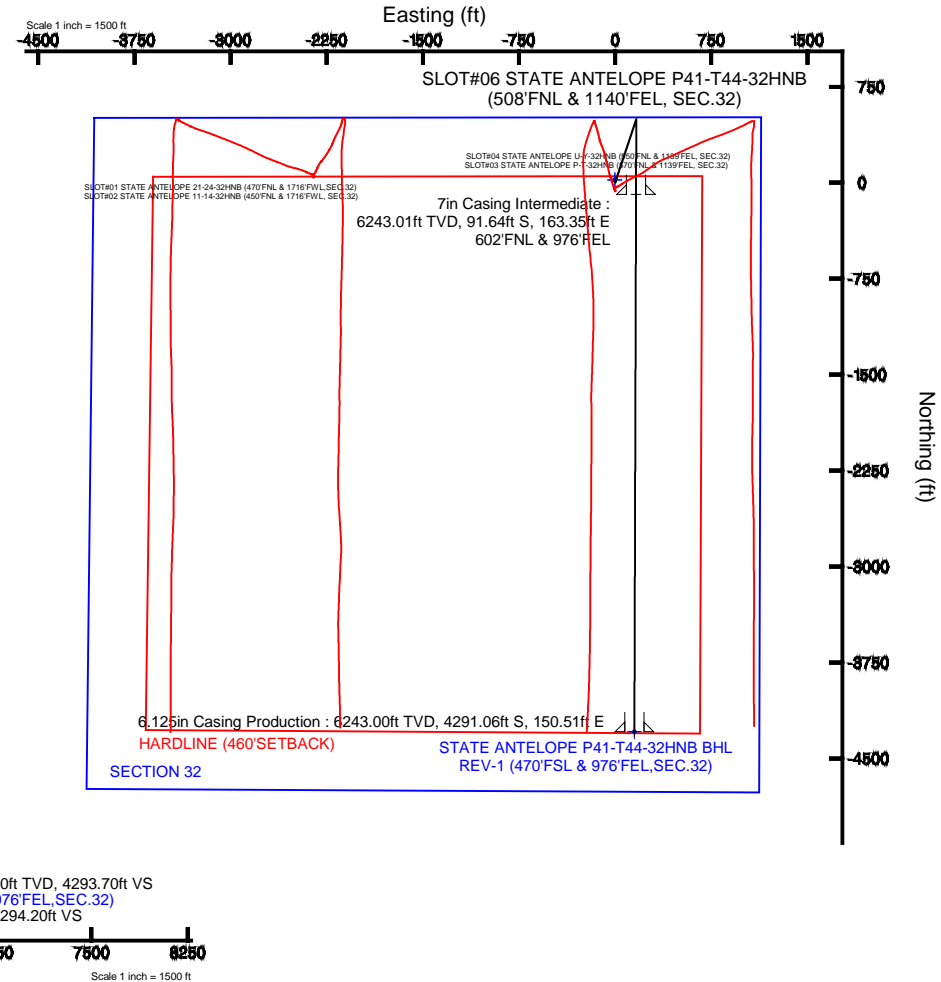
## Bottom Hole Location

MD (ft)	Inc (°)	Az (°)	TVD (ft)	Local N (ft)	Local E (ft)	Grid East (US ft)	Grid North (US ft)	Latitude	Longitude
10821.50	90.000	180.175	6243.00	-4291.56	150.51	3322798.23	1372544.81	40°21'00.900"N	104°20'30.480"W



BGGM (1945.0 to 2015.0) Dip: 66.99° Field: 52805.3 nT  
Magnetic North is 8.32 degrees East of True North (at 1/16/2014)

To correct azimuth from Magnetic to True add 8.32 degrees





# Planned Wellpath Report

STATE ANTELOPE P41-T44-32HNB (REV-A.0) PWP  
Page 1 of 7



## REFERENCE WELLPATH IDENTIFICATION

Operator	BONANZA CREEK OIL COMPANY	Slot	SLOT#06 STATE ANTELOPE P41-T44-32HNB (508'FNL & 1140'FEL, SEC.32)
Area	COLORADO	Well	STATE ANTELOPE P41-T44-32HNB
Field	WELD COUNTY	Wellbore	STATE ANTELOPE P41-T44-32HNB PWB
Facility	SEC.32-T5N-R62W		

## REPORT SETUP INFORMATION

Projection System	NAD83 / Lambert Colorado SP, Northern Zone (501), US feet	Software System	WellArchitect® 4.0.0
North Reference	True	User	Guenaler
Scale	0.999959	Report Generated	1/17/2014 at 10:56:12 AM
Convergence at slot	n/a	Database/Source file	WA_Denver/STATE_ANTELOPE_P41-T44-32HNB_PWB.xml

## WELLPATH LOCATION

	Local coordinates		Grid coordinates		Geographic coordinates	
	North[ft]	East[ft]	Easting[US ft]	Northing[US ft]	Latitude	Longitude
Slot Location	-39.96	2352.05	3322591.72	1376833.86	40°21'43.308"N	104°20'32.424"W
Facility Reference Pt			3320239.45	1376843.34	40°21'43.704"N	104°21'02.808"W
Field Reference Pt			3327718.19	1377782.99	40°21'52.020"N	104°19'26.040"W

## WELLPATH DATUM

Calculation method	Minimum curvature	RIG (RKB) to Facility Vertical Datum	4590.00ft
Horizontal Reference Pt	Slot	RIG (RKB) to Mean Sea Level	4590.00ft
Vertical Reference Pt	RIG (RKB)	RIG (RKB) to Mud Line at Slot (SLOT#06 STATE ANTELOPE P41-T44-32HNB (508'FNL & 1140'FEL, SEC.32))	4590.00ft
MD Reference Pt	RIG (RKB)	Section Origin	N 0.00, E 0.00 ft
Field Vertical Reference	Mean Sea Level	Section Azimuth	177.99°



# Planned Wellpath Report

STATE ANTELOPE P41-T44-32HNB (REV-A.0) PWP  
Page 2 of 7



## REFERENCE WELLPATH IDENTIFICATION

Operator	BONANZA CREEK OIL COMPANY	Slot	SLOT#06 STATE ANTELOPE P41-T44-32HNB (508'FNL & 1140'FEL, SEC.32)
Area	COLORADO	Well	STATE ANTELOPE P41-T44-32HNB
Field	WELD COUNTY	Wellbore	STATE ANTELOPE P41-T44-32HNB PWB
Facility	SEC.32-T5N-R62W		

## WELLPATH DATA (119 stations) † = interpolated/extrapolated station

MD [ft]	Inclination [°]	Azimuth [°]	TVD [ft]	Vert Sect [ft]	North [ft]	East [ft]	Latitude	Longitude	DLS [°/100ft]	Comments
0.00†	0.000	18.450	0.00	0.00	0.00	0.00	40°21'43.308"N	104°20'32.424"W	0.00	
17.00	0.000	18.450	17.00	0.00	0.00	0.00	40°21'43.308"N	104°20'32.424"W	0.00	Tie On
117.00†	0.000	18.450	117.00	0.00	0.00	0.00	40°21'43.308"N	104°20'32.424"W	0.00	
217.00†	0.000	18.450	217.00	0.00	0.00	0.00	40°21'43.308"N	104°20'32.424"W	0.00	
317.00†	0.000	18.450	317.00	0.00	0.00	0.00	40°21'43.308"N	104°20'32.424"W	0.00	
417.00†	0.000	18.450	417.00	0.00	0.00	0.00	40°21'43.308"N	104°20'32.424"W	0.00	
517.00†	0.000	18.450	517.00	0.00	0.00	0.00	40°21'43.308"N	104°20'32.424"W	0.00	
617.00†	0.000	18.450	617.00	0.00	0.00	0.00	40°21'43.308"N	104°20'32.424"W	0.00	
717.00†	0.000	18.450	717.00	0.00	0.00	0.00	40°21'43.308"N	104°20'32.424"W	0.00	
817.00†	0.000	18.450	817.00	0.00	0.00	0.00	40°21'43.308"N	104°20'32.424"W	0.00	
917.00†	0.000	18.450	917.00	0.00	0.00	0.00	40°21'43.308"N	104°20'32.424"W	0.00	
1017.00†	0.000	18.450	1017.00	0.00	0.00	0.00	40°21'43.308"N	104°20'32.424"W	0.00	
1117.00†	0.000	18.450	1117.00	0.00	0.00	0.00	40°21'43.308"N	104°20'32.424"W	0.00	
1200.00	0.000	18.450	1200.00	0.00	0.00	0.00	40°21'43.308"N	104°20'32.424"W	0.00	End of Tangent
1217.00†	0.340	18.450	1217.00	-0.05	0.05	0.02	40°21'43.308"N	104°20'32.424"W	2.00	
1317.00†	2.340	18.450	1316.97	-2.24	2.27	0.76	40°21'43.330"N	104°20'32.414"W	2.00	
1417.00†	4.340	18.450	1416.79	-7.70	7.79	2.60	40°21'43.385"N	104°20'32.390"W	2.00	
1517.00†	6.340	18.450	1516.35	-16.42	16.62	5.54	40°21'43.472"N	104°20'32.352"W	2.00	
1600.00	8.000	18.450	1598.70	-26.12	26.45	8.82	40°21'43.569"N	104°20'32.310"W	2.00	End of Build
1617.00†	8.000	18.450	1615.54	-28.34	28.69	9.57	40°21'43.592"N	104°20'32.300"W	0.00	
1717.00†	8.000	18.450	1714.56	-41.38	41.89	13.98	40°21'43.722"N	104°20'32.243"W	0.00	
1817.00†	8.000	18.450	1813.59	-54.42	55.10	18.38	40°21'43.852"N	104°20'32.187"W	0.00	
1917.00†	8.000	18.450	1912.62	-67.46	68.30	22.79	40°21'43.983"N	104°20'32.130"W	0.00	
2017.00†	8.000	18.450	2011.64	-80.50	81.50	27.19	40°21'44.113"N	104°20'32.073"W	0.00	
2117.00†	8.000	18.450	2110.67	-93.54	94.70	31.59	40°21'44.244"N	104°20'32.016"W	0.00	
2217.00†	8.000	18.450	2209.70	-106.57	107.90	36.00	40°21'44.374"N	104°20'31.959"W	0.00	
2317.00†	8.000	18.450	2308.72	-119.61	121.10	40.40	40°21'44.505"N	104°20'31.902"W	0.00	
2417.00†	8.000	18.450	2407.75	-132.65	134.31	44.81	40°21'44.635"N	104°20'31.845"W	0.00	
2517.00†	8.000	18.450	2506.78	-145.69	147.51	49.21	40°21'44.766"N	104°20'31.788"W	0.00	
2617.00†	8.000	18.450	2605.80	-158.73	160.71	53.62	40°21'44.896"N	104°20'31.731"W	0.00	



# Planned Wellpath Report

## STATE ANTELOPE P41-T44-32HNB (REV-A.0) PWP

Page 3 of 7



### REFERENCE WELLPATH IDENTIFICATION

Operator	BONANZA CREEK OIL COMPANY	Slot	SLOT#06 STATE ANTELOPE P41-T44-32HNB (508'FNL & 1140'FEL, SEC.32)
Area	COLORADO	Well	STATE ANTELOPE P41-T44-32HNB
Field	WELD COUNTY	Wellbore	STATE ANTELOPE P41-T44-32HNB PWB
Facility	SEC.32-T5N-R62W		

### WELLPATH DATA (119 stations) † = interpolated/extrapolated station

MD [ft]	Inclination [°]	Azimuth [°]	TVD [ft]	Vert Sect [ft]	North [ft]	East [ft]	Latitude	Longitude	DLS [°/100ft]	Comments
2717.00†	8.000	18.450	2704.83	-171.77	173.91	58.02	40°21'45.027"N	104°20'31.674"W	0.00	
2817.00†	8.000	18.450	2803.86	-184.81	187.11	62.43	40°21'45.157"N	104°20'31.618"W	0.00	
2917.00†	8.000	18.450	2902.88	-197.85	200.32	66.83	40°21'45.287"N	104°20'31.561"W	0.00	
3017.00†	8.000	18.450	3001.91	-210.89	213.52	71.24	40°21'45.418"N	104°20'31.504"W	0.00	
3117.00†	8.000	18.450	3100.94	-223.93	226.72	75.64	40°21'45.548"N	104°20'31.447"W	0.00	
3217.00†	8.000	18.450	3199.97	-236.97	239.92	80.04	40°21'45.679"N	104°20'31.390"W	0.00	
3317.00†	8.000	18.450	3298.99	-250.01	253.12	84.45	40°21'45.809"N	104°20'31.333"W	0.00	
3417.00†	8.000	18.450	3398.02	-263.05	266.33	88.85	40°21'45.940"N	104°20'31.276"W	0.00	
3517.00†	8.000	18.450	3497.05	-276.09	279.53	93.26	40°21'46.070"N	104°20'31.219"W	0.00	
3617.00†	8.000	18.450	3596.07	-289.13	292.73	97.66	40°21'46.201"N	104°20'31.162"W	0.00	
3717.00†	8.000	18.450	3695.10	-302.17	305.93	102.07	40°21'46.331"N	104°20'31.105"W	0.00	
3817.00†	8.000	18.450	3794.13	-315.21	319.13	106.47	40°21'46.462"N	104°20'31.049"W	0.00	
3917.00†	8.000	18.450	3893.15	-328.25	332.34	110.88	40°21'46.592"N	104°20'30.992"W	0.00	
4017.00†	8.000	18.450	3992.18	-341.29	345.54	115.28	40°21'46.723"N	104°20'30.935"W	0.00	
4117.00†	8.000	18.450	4091.21	-354.32	358.74	119.68	40°21'46.853"N	104°20'30.878"W	0.00	
4217.00†	8.000	18.450	4190.23	-367.36	371.94	124.09	40°21'46.983"N	104°20'30.821"W	0.00	
4317.00†	8.000	18.450	4289.26	-380.40	385.14	128.49	40°21'47.114"N	104°20'30.764"W	0.00	
4417.00†	8.000	18.450	4388.29	-393.44	398.35	132.90	40°21'47.244"N	104°20'30.707"W	0.00	
4517.00†	8.000	18.450	4487.31	-406.48	411.55	137.30	40°21'47.375"N	104°20'30.650"W	0.00	
4617.00†	8.000	18.450	4586.34	-419.52	424.75	141.71	40°21'47.505"N	104°20'30.593"W	0.00	
4717.00†	8.000	18.450	4685.37	-432.56	437.95	146.11	40°21'47.636"N	104°20'30.536"W	0.00	
4817.00†	8.000	18.450	4784.39	-445.60	451.15	150.52	40°21'47.766"N	104°20'30.480"W	0.00	
4917.00†	8.000	18.450	4883.42	-458.64	464.36	154.92	40°21'47.897"N	104°20'30.423"W	0.00	
4948.79	8.000	18.450	4914.90	-462.79	468.55	156.32	40°21'47.938"N	104°20'30.405"W	0.00	End of Tangent
5017.00†	6.636	18.450	4982.55	-470.93	476.79	159.07	40°21'48.020"N	104°20'30.369"W	2.00	
5117.00†	4.636	18.450	5082.07	-480.13	486.11	162.18	40°21'48.112"N	104°20'30.329"W	2.00	
5217.00†	2.636	18.450	5181.86	-486.07	492.12	164.19	40°21'48.171"N	104°20'30.303"W	2.00	
5317.00†	0.636	18.450	5281.81	-488.74	494.83	165.09	40°21'48.198"N	104°20'30.291"W	2.00	
5348.79	0.000	180.175	5313.60	-488.91	495.00	165.14	40°21'48.199"N	104°20'30.291"W	2.00	End of Drop
5417.00†	0.000	180.175	5381.81	-488.91	495.00	165.14	40°21'48.199"N	104°20'30.291"W	0.00	



# Planned Wellpath Report

## STATE ANTELOPE P41-T44-32HNB (REV-A.0) PWP

Page 4 of 7



### REFERENCE WELLPATH IDENTIFICATION

Operator	BONANZA CREEK OIL COMPANY	Slot	SLOT#06 STATE ANTELOPE P41-T44-32HNB (508'FNL & 1140'FEL, SEC.32)
Area	COLORADO	Well	STATE ANTELOPE P41-T44-32HNB
Field	WELD COUNTY	Wellbore	STATE ANTELOPE P41-T44-32HNB PWB
Facility	SEC.32-T5N-R62W		

### WELLPATH DATA (119 stations) † = interpolated/extrapolated station

MD [ft]	Inclination [°]	Azimuth [°]	TVD [ft]	Vert Sect [ft]	North [ft]	East [ft]	Latitude	Longitude	DLS [°/100ft]	Comments
5517.00†	0.000	180.175	5481.81	-488.91	495.00	165.14	40°21'48.199"N	104°20'30.291"W	0.00	
5617.00†	0.000	180.175	5581.81	-488.91	495.00	165.14	40°21'48.199"N	104°20'30.291"W	0.00	
5717.00†	0.000	180.175	5681.81	-488.91	495.00	165.14	40°21'48.199"N	104°20'30.291"W	0.00	
5733.38	0.000	180.175	5698.19	-488.91	495.00	165.14	40°21'48.199"N	104°20'30.291"W	0.00	End of Tangent
5817.00†	9.198	180.175	5781.45	-482.21	488.30	165.12	40°21'48.133"N	104°20'30.291"W	11.00	
5917.00†	20.198	180.175	5878.03	-456.90	462.97	165.05	40°21'47.883"N	104°20'30.292"W	11.00	
6017.00†	31.198	180.175	5968.00	-413.63	419.67	164.91	40°21'47.455"N	104°20'30.294"W	11.00	
6117.00†	42.198	180.175	6048.06	-354.01	360.01	164.73	40°21'46.865"N	104°20'30.296"W	11.00	
6217.00†	53.198	180.175	6115.26	-280.22	286.16	164.51	40°21'46.136"N	104°20'30.299"W	11.00	
6317.00†	64.198	180.175	6167.14	-194.97	200.85	164.25	40°21'45.293"N	104°20'30.302"W	11.00	
6369.74	70.000	180.175	6187.65	-146.43	152.28	164.10	40°21'44.813"N	104°20'30.304"W	11.00	End of Build
6417.00†	70.000	180.175	6203.81	-102.06	107.87	163.96	40°21'44.374"N	104°20'30.306"W	0.00	
6439.74	70.000	180.175	6211.59	-80.70	86.50	163.90	40°21'44.163"N	104°20'30.307"W	0.00	End of Tangent
6517.00†	78.498	180.175	6232.55	-6.47	12.22	163.67	40°21'43.429"N	104°20'30.310"W	11.00	
6617.00†	89.498	180.175	6242.99	92.76	-87.08	163.37	40°21'42.447"N	104°20'30.314"W	11.00	
6621.56	90.000	180.175	6243.01	97.32	-91.65	163.35	40°21'42.402"N	104°20'30.314"W	11.00	End of 3D Arc
6717.00†	90.000	180.175	6243.01	192.68	-187.08	163.06	40°21'41.459"N	104°20'30.318"W	0.00	
6817.00†	90.000	180.175	6243.01	292.61	-287.08	162.75	40°21'40.471"N	104°20'30.322"W	0.00	
6917.00†	90.000	180.175	6243.01	392.54	-387.08	162.45	40°21'39.483"N	104°20'30.325"W	0.00	
7017.00†	90.000	180.175	6243.01	492.47	-487.08	162.14	40°21'38.495"N	104°20'30.329"W	0.00	
7117.00†	90.000	180.175	6243.01	592.39	-587.08	161.84	40°21'37.507"N	104°20'30.333"W	0.00	
7217.00†	90.000	180.175	6243.01	692.32	-687.08	161.53	40°21'36.518"N	104°20'30.337"W	0.00	
7317.00†	90.000	180.175	6243.01	792.25	-787.08	161.23	40°21'35.530"N	104°20'30.341"W	0.00	
7417.00†	90.000	180.175	6243.01	892.17	-887.08	160.92	40°21'34.542"N	104°20'30.345"W	0.00	
7517.00†	90.000	180.175	6243.00	992.10	-987.08	160.61	40°21'33.554"N	104°20'30.349"W	0.00	
7617.00†	90.000	180.175	6243.00	1092.03	-1087.08	160.31	40°21'32.566"N	104°20'30.353"W	0.00	
7717.00†	90.000	180.175	6243.00	1191.96	-1187.08	160.00	40°21'31.578"N	104°20'30.357"W	0.00	
7817.00†	90.000	180.175	6243.00	1291.88	-1287.08	159.70	40°21'30.589"N	104°20'30.361"W	0.00	
7917.00†	90.000	180.175	6243.00	1391.81	-1387.08	159.39	40°21'29.601"N	104°20'30.365"W	0.00	
8017.00†	90.000	180.175	6243.00	1491.74	-1487.08	159.09	40°21'28.613"N	104°20'30.369"W	0.00	



# Planned Wellpath Report

## STATE ANTELOPE P41-T44-32HNB (REV-A.0) PWP

Page 5 of 7



### REFERENCE WELLPATH IDENTIFICATION

Operator	BONANZA CREEK OIL COMPANY	Slot	SLOT#06 STATE ANTELOPE P41-T44-32HNB (508'FNL & 1140'FEL, SEC.32)
Area	COLORADO	Well	STATE ANTELOPE P41-T44-32HNB
Field	WELD COUNTY	Wellbore	STATE ANTELOPE P41-T44-32HNB PWB
Facility	SEC.32-T5N-R62W		

### WELLPATH DATA (119 stations) † = interpolated/extrapolated station

MD [ft]	Inclination [°]	Azimuth [°]	TVD [ft]	Vert Sect [ft]	North [ft]	East [ft]	Latitude	Longitude	DLS [°/100ft]	Comments
8117.00†	90.000	180.175	6243.00	1591.67	-1587.08	158.78	40°21'27.625"N	104°20'30.373"W	0.00	
8217.00†	90.000	180.175	6243.00	1691.59	-1687.08	158.47	40°21'26.637"N	104°20'30.377"W	0.00	
8317.00†	90.000	180.175	6243.00	1791.52	-1787.08	158.17	40°21'25.649"N	104°20'30.381"W	0.00	
8417.00†	90.000	180.175	6243.00	1891.45	-1887.07	157.86	40°21'24.660"N	104°20'30.385"W	0.00	
8517.00†	90.000	180.175	6243.00	1991.38	-1987.07	157.56	40°21'23.672"N	104°20'30.389"W	0.00	
8617.00†	90.000	180.175	6243.00	2091.30	-2087.07	157.25	40°21'22.684"N	104°20'30.393"W	0.00	
8717.00†	90.000	180.175	6243.00	2191.23	-2187.07	156.95	40°21'21.696"N	104°20'30.397"W	0.00	
8817.00†	90.000	180.175	6243.00	2291.16	-2287.07	156.64	40°21'20.708"N	104°20'30.401"W	0.00	
8917.00†	90.000	180.175	6243.00	2391.09	-2387.07	156.33	40°21'19.720"N	104°20'30.405"W	0.00	
9017.00†	90.000	180.175	6243.00	2491.01	-2487.07	156.03	40°21'18.731"N	104°20'30.409"W	0.00	
9117.00†	90.000	180.175	6243.00	2590.94	-2587.07	155.72	40°21'17.743"N	104°20'30.413"W	0.00	
9217.00†	90.000	180.175	6243.00	2690.87	-2687.07	155.42	40°21'16.755"N	104°20'30.417"W	0.00	
9317.00†	90.000	180.175	6243.00	2790.79	-2787.07	155.11	40°21'15.767"N	104°20'30.420"W	0.00	
9417.00†	90.000	180.175	6243.00	2890.72	-2887.07	154.81	40°21'14.779"N	104°20'30.424"W	0.00	
9517.00†	90.000	180.175	6243.00	2990.65	-2987.07	154.50	40°21'13.791"N	104°20'30.428"W	0.00	
9617.00†	90.000	180.175	6243.00	3090.58	-3087.07	154.19	40°21'12.802"N	104°20'30.432"W	0.00	
9717.00†	90.000	180.175	6243.00	3190.50	-3187.07	153.89	40°21'11.814"N	104°20'30.436"W	0.00	
9817.00†	90.000	180.175	6243.00	3290.43	-3287.07	153.58	40°21'10.826"N	104°20'30.440"W	0.00	
9917.00†	90.000	180.175	6243.00	3390.36	-3387.07	153.28	40°21'09.838"N	104°20'30.444"W	0.00	
10017.00†	90.000	180.175	6243.00	3490.29	-3487.07	152.97	40°21'08.850"N	104°20'30.448"W	0.00	
10117.00†	90.000	180.175	6243.00	3590.21	-3587.07	152.67	40°21'07.862"N	104°20'30.452"W	0.00	
10217.00†	90.000	180.175	6243.00	3690.14	-3687.07	152.36	40°21'06.873"N	104°20'30.456"W	0.00	
10317.00†	90.000	180.175	6243.00	3790.07	-3787.07	152.05	40°21'05.885"N	104°20'30.460"W	0.00	
10417.00†	90.000	180.175	6243.00	3890.00	-3887.07	151.75	40°21'04.897"N	104°20'30.464"W	0.00	
10517.00†	90.000	180.175	6243.00	3989.92	-3987.07	151.44	40°21'03.909"N	104°20'30.468"W	0.00	
10617.00†	90.000	180.175	6243.00	4089.85	-4087.06	151.14	40°21'02.921"N	104°20'30.472"W	0.00	
10717.00†	90.000	180.175	6243.00	4189.78	-4187.06	150.83	40°21'01.933"N	104°20'30.476"W	0.00	
10817.00†	90.000	180.175	6243.00	4289.71	-4287.06	150.53	40°21'00.944"N	104°20'30.480"W	0.00	
10821.50	90.000	180.175	6243.00 <sup>1</sup>	4294.20	-4291.56	150.51	40°21'00.900"N	104°20'30.480"W	0.00	End of Tangent



# Planned Wellpath Report

## STATE ANTELOPE P41-T44-32HNB (REV-A.0) PWP

Page 6 of 7



### REFERENCE WELLPATH IDENTIFICATION

Operator	BONANZA CREEK OIL COMPANY	Slot	SLOT#06 STATE ANTELOPE P41-T44-32HNB (508'FNL & 1140'FEL, SEC.32)
Area	COLORADO	Well	STATE ANTELOPE P41-T44-32HNB
Field	WELD COUNTY	Wellbore	STATE ANTELOPE P41-T44-32HNB PWB
Facility	SEC.32-T5N-R62W		

### HOLE & CASING SECTIONS -

Ref Wellbore: STATE ANTELOPE P41-T44-32HNB PWB

Ref Wellpath: STATE ANTELOPE P41-T44-32HNB (REV-A.0) PWP

String/Diameter	Start MD [ft]	End MD [ft]	Interval [ft]	Start TVD [ft]	End TVD [ft]	Start N/S [ft]	Start E/W [ft]	End N/S [ft]	End E/W [ft]
7in Casing Intermediate	17.00	6621.56	6604.56	17.00	6243.01	0.00	0.00	-91.64	163.35
6.125in Casing Production	17.00	10821.00	10804.00	17.00	6243.00	0.00	0.00	-4291.06	150.51

### TARGETS

Name	MD [ft]	TVD [ft]	North [ft]	East [ft]	Grid East [US ft]	Grid North [US ft]	Latitude	Longitude	Shape
STATE ANTELOPE 41-44-32HNB SECTION 32		0.00	21.86	-2.79	3322588.65	1376855.68	40°21'43.524"N	104°20'32.460"W	polygon
STATE ANTELOPE 41-44-32HNB HARDLINE (460'SETBACK)		6243.00	21.86	-2.79	3322588.65	1376855.68	40°21'43.524"N	104°20'32.460"W	polygon
1) STATE ANTELOPE P41-T44-32HNB BHL REV-1 (470'FSL & 976'FEL,SEC.32)	10821.50	6243.00	-4291.56	150.51	3322798.23	1372544.81	40°21'00.900"N	104°20'30.480"W	point

### SURVEY PROGRAM -

Ref Wellbore: STATE ANTELOPE P41-T44-32HNB PWB

Ref Wellpath: STATE ANTELOPE P41-T44-32HNB (REV-A.0) PWP

Start MD [ft]	End MD [ft]	Positional Uncertainty Model	Log Name/Comment	Wellbore
17.00	10821.50	NaviTrak (Standard)		STATE ANTELOPE P41-T44-32HNB PWB





# Planned Wellpath Report

STATE ANTELOPE P41-T44-32HNB (REV-A.0) PWP

Page 7 of 7



REFERENCE WELLPATH IDENTIFICATION			
Operator	BONANZA CREEK OIL COMPANY	Slot	SLOT#06 STATE ANTELOPE P41-T44-32HNB (508'FNL & 1140'FEL, SEC.32)
Area	COLORADO	Well	STATE ANTELOPE P41-T44-32HNB
Field	WELD COUNTY	Wellbore	STATE ANTELOPE P41-T44-32HNB PWB
Facility	SEC.32-T5N-R62W		

DESIGN COMMENTS				
MD [ft]	Inclination [°]	Azimuth [°]	TVD [ft]	Comment
17.00	0.000	18.450	17.00	Tie On
1200.00	0.000	18.450	1200.00	End of Tangent
1600.00	8.000	18.450	1598.70	End of Build
4948.79	8.000	18.450	4914.90	End of Tangent
5348.79	0.000	180.175	5313.60	End of Drop
5733.38	0.000	180.175	5698.19	End of Tangent
6369.74	70.000	180.175	6187.65	End of Build
6439.74	70.000	180.175	6211.59	End of Tangent
6621.56	90.000	180.175	6243.01	End of 3D Arc
10821.50	90.000	180.175	6243.00	End of Tangent