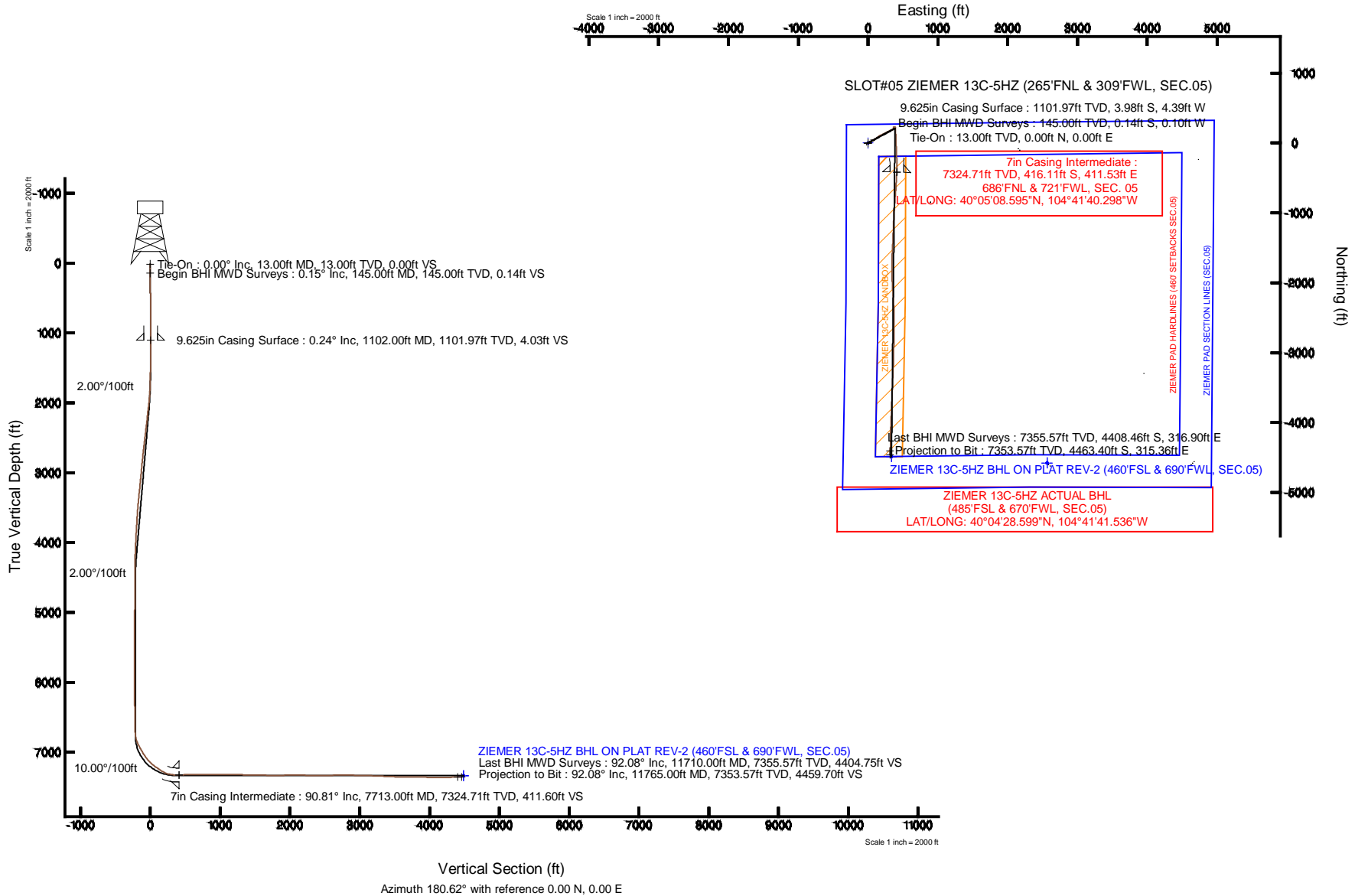


KERR-MCGEE OIL & GAS ONSHORE LP

Location: COLORADO Slot: SLOT#05 ZIEMER 13C-5HZ (265°FNL & 309°FWL, SEC.05)
 Field: WELD COUNTY (KERR MCGEE) Well: ZIEMER 13C-5HZ
 Facility: SEC.05-T1N-R65W Wellbore: ZIEMER 13C-5HZ PWB

Plot reference wellpath is ZIEMER 13C-5HZ (REV-B.0) PWP

True vertical depths are referenced to ENSIGN 145 (13KB) (RKB)	Grid System: NAD83 / Lambert Colorado SP, Northern Zone (501), US feet
Measured depths are referenced to ENSIGN 145 (13KB) (RKB)	North Reference: True north
ENSIGN 145 (13KB) (RKB) to Mean Sea Level: 4970 feet	Scale: True distance
Mean Sea Level to Mud line (At Slot: SLOT#05 ZIEMER 13C-5HZ (265°FNL & 309°FWL, SEC.05)): 0 feet	Depths are in feet
Coordinates are in feet referenced to Slot	Created by: preacin on 29/Jan/2014



REFERENCE WELLPATH IDENTIFICATION

Operator	KERR-MCGEE OIL & GAS ONSHORE LP	Slot	SLOT#05 ZIEMER 13C-5HZ (265'FNL & 309'FWL, SEC.05)
Area	COLORADO	Well	ZIEMER 13C-5HZ
Field	WELD COUNTY (KERR MCGEE)	Wellbore	ZIEMER 13C-5HZ AWB
Facility	SEC.05-T1N-R65W		

REPORT SETUP INFORMATION

Projection System	NAD83 / Lambert Colorado SP, Northern Zone (501), US feet	Software System	WellArchitect® 4.0.0
North Reference	True	User	Precaín
Scale	0.999961	Report Generated	29/Jan/2014 at 08:08
Convergence at slot	n/a	Database/Source file	WellArchitectDB/ZIEMER_13C-5HZ_AWB.xml

WELLPATH LOCATION

	Local coordinates		Grid coordinates		Geographic coordinates	
	North[ft]	East[ft]	Easting[US ft]	Northing[US ft]	Latitude	Longitude
Slot Location	2292.49	-2301.35	3224954.06	1275508.74	40°05'12.707"N	104°41'45.593"W
Facility Reference Pt			3227276.21	1273237.51	40°04'50.053"N	104°41'15.984"W
Field Reference Pt			3197771.84	1268891.29	40°04'09.600"N	104°47'36.000"W

WELLPATH DATUM

Calculation method	Minimum curvature	ENSIGN 145 (13'KB) (RKB) to Facility Vertical Datum	4970.00ft
Horizontal Reference Pt	Slot	ENSIGN 145 (13'KB) (RKB) to Mean Sea Level	4970.00ft
Vertical Reference Pt	ENSIGN 145 (13'KB) (RKB)	ENSIGN 145 (13'KB) (RKB) to Mud Line at Slot (SLOT#05 ZIEMER 13C-5HZ (265'FNL & 309'FWL, SEC.05))	4970.00ft
MD Reference Pt	ENSIGN 145 (13'KB) (RKB)	Section Origin	N 0.00, E 0.00 ft
Field Vertical Reference	Mean Sea Level	Section Azimuth	180.62°

REFERENCE WELLPATH IDENTIFICATION			
Operator	KERR-MCGEE OIL & GAS ONSHORE LP	Slot	SLOT#05 ZIEMER 13C-5HZ (265'FNL & 309'FWL, SEC.05)
Area	COLORADO	Well	ZIEMER 13C-5HZ
Field	WELD COUNTY (KERR MCGEE)	Wellbore	ZIEMER 13C-5HZ AWB
Facility	SEC.05-T1N-R65W		

WELLPATH DATA (111 stations) † = interpolated/extrapolated station										
MD [ft]	Inclination [°]	Azimuth [°]	TVD [ft]	Vert Sect [ft]	North [ft]	East [ft]	Latitude	Longitude	DLS [°/100ft]	Comments
0.00†	0.000	214.360	0.00	0.00	0.00	0.00	40°05'12.707"N	104°41'45.593"W	0.00	
13.00	0.000	214.360	13.00	0.00	0.00	0.00	40°05'12.707"N	104°41'45.593"W	0.00	Tie-On
145.00	0.150	214.360	145.00	0.14	-0.14	-0.10	40°05'12.706"N	104°41'45.594"W	0.11	Begin BHI MWD Surveys
235.00	0.230	199.330	235.00	0.41	-0.41	-0.22	40°05'12.703"N	104°41'45.596"W	0.10	
325.00	0.480	217.600	325.00	0.89	-0.88	-0.51	40°05'12.698"N	104°41'45.600"W	0.30	
419.00	0.710	236.860	418.99	1.52	-1.51	-1.24	40°05'12.692"N	104°41'45.609"W	0.32	
512.00	0.630	223.610	511.99	2.22	-2.20	-2.08	40°05'12.685"N	104°41'45.620"W	0.19	
606.00	0.660	215.360	605.98	3.04	-3.01	-2.75	40°05'12.677"N	104°41'45.628"W	0.10	
699.00	0.490	207.790	698.98	3.83	-3.80	-3.24	40°05'12.669"N	104°41'45.635"W	0.20	
793.00	0.660	223.030	792.97	4.59	-4.55	-3.80	40°05'12.662"N	104°41'45.642"W	0.24	
886.00	0.240	345.950	885.97	4.80	-4.75	-4.21	40°05'12.660"N	104°41'45.647"W	0.88	
980.00	0.220	335.520	979.97	4.45	-4.40	-4.33	40°05'12.664"N	104°41'45.649"W	0.05	
1048.00	0.190	346.670	1047.97	4.22	-4.17	-4.41	40°05'12.666"N	104°41'45.650"W	0.07	
1198.00	0.460	51.130	1197.97	3.59	-3.55	-4.00	40°05'12.672"N	104°41'45.644"W	0.28	
1541.00	0.380	17.410	1540.96	1.63	-1.60	-2.59	40°05'12.691"N	104°41'45.626"W	0.07	
1634.00	2.370	72.660	1633.93	0.74	-0.73	-0.66	40°05'12.700"N	104°41'45.602"W	2.34	
1728.00	5.370	74.150	1727.70	-1.11	1.05	5.43	40°05'12.717"N	104°41'45.523"W	3.19	
1821.00	7.450	66.350	1820.12	-4.82	4.66	15.14	40°05'12.753"N	104°41'45.398"W	2.42	
1915.00	8.770	55.400	1913.18	-11.46	11.17	26.62	40°05'12.817"N	104°41'45.251"W	2.16	
2008.00	11.130	56.440	2004.78	-20.59	20.16	39.94	40°05'12.906"N	104°41'45.079"W	2.54	
2195.00	11.910	59.580	2188.01	-40.69	39.91	71.62	40°05'13.101"N	104°41'44.672"W	0.54	
2382.00	12.690	57.360	2370.72	-61.90	60.76	105.55	40°05'13.307"N	104°41'44.235"W	0.49	
2569.00	11.820	56.270	2553.45	-83.98	82.47	138.78	40°05'13.522"N	104°41'43.807"W	0.48	
2756.00	11.480	59.860	2736.60	-104.30	102.45	170.80	40°05'13.719"N	104°41'43.395"W	0.43	
2940.00	11.210	62.420	2917.01	-122.12	119.92	202.49	40°05'13.892"N	104°41'42.988"W	0.31	
3120.00	12.480	63.780	3093.17	-139.17	136.62	235.45	40°05'14.057"N	104°41'42.564"W	0.72	
3300.00	12.440	63.440	3268.93	-156.81	153.88	270.23	40°05'14.228"N	104°41'42.116"W	0.05	
3390.00	12.170	61.470	3356.87	-165.86	162.75	287.24	40°05'14.315"N	104°41'41.897"W	0.55	
3480.00	11.630	66.710	3444.93	-174.16	170.86	303.91	40°05'14.395"N	104°41'41.683"W	1.34	
3570.00	9.250	65.140	3533.44	-180.95	177.49	318.81	40°05'14.461"N	104°41'41.491"W	2.66	
3660.00	8.730	64.330	3622.33	-187.09	183.49	331.52	40°05'14.520"N	104°41'41.328"W	0.59	
3750.00	7.890	63.850	3711.39	-192.90	189.17	343.23	40°05'14.576"N	104°41'41.177"W	0.94	
3840.00	7.420	65.090	3800.58	-198.19	194.34	354.04	40°05'14.628"N	104°41'41.038"W	0.55	
3930.00	6.940	60.290	3889.88	-203.44	199.49	364.03	40°05'14.678"N	104°41'40.909"W	0.85	
4021.00	4.710	56.960	3980.40	-208.29	204.25	371.94	40°05'14.725"N	104°41'40.808"W	2.48	
4111.00	4.350	53.060	4070.12	-212.42	208.31	377.77	40°05'14.766"N	104°41'40.733"W	0.53	
4201.00	3.170	60.470	4159.93	-215.75	211.59	382.66	40°05'14.798"N	104°41'40.670"W	1.42	
4291.00	2.150	90.060	4249.83	-217.01	212.82	386.52	40°05'14.810"N	104°41'40.620"W	1.86	
4381.00	0.840	128.110	4339.80	-216.63	212.41	388.72	40°05'14.806"N	104°41'40.592"W	1.75	
4831.00	1.730	317.580	4789.75	-219.59	215.39	386.74	40°05'14.835"N	104°41'40.617"W	0.57	
5281.00	3.150	282.060	5239.35	-227.00	222.99	370.06	40°05'14.911"N	104°41'40.832"W	0.45	
5371.00	1.700	287.210	5329.27	-227.87	223.90	366.37	40°05'14.920"N	104°41'40.879"W	1.63	
5461.00	0.840	93.540	5419.26	-228.22	224.25	365.75	40°05'14.923"N	104°41'40.887"W	2.80	
5641.00	2.030	87.600	5599.20	-228.32	224.30	370.25	40°05'14.924"N	104°41'40.829"W	0.67	
5821.00	2.000	82.010	5779.09	-228.96	224.87	376.55	40°05'14.929"N	104°41'40.748"W	0.11	

REFERENCE WELLPATH IDENTIFICATION

Operator	KERR-MCGEE OIL & GAS ONSHORE LP	Slot	SLOT#05 ZIEMER 13C-5HZ (265'FNL & 309'FWL, SEC.05)
Area	COLORADO	Well	ZIEMER 13C-5HZ
Field	WELD COUNTY (KERR MCGEE)	Wellbore	ZIEMER 13C-5HZ AWB
Facility	SEC.05-T1N-R65W		

WELLPATH DATA (111 stations) † = interpolated/extrapolated station

MD [ft]	Inclination [°]	Azimuth [°]	TVD [ft]	Vert Sect [ft]	North [ft]	East [ft]	Latitude	Longitude	DLS [°/100ft]	Comments
6001.00	1.460	112.510	5959.01	-228.58	224.43	381.78	40°05'14.925"N	104°41'40.681"W	0.58	
6181.00	1.710	133.270	6138.94	-225.90	221.71	385.85	40°05'14.898"N	104°41'40.629"W	0.35	
6361.00	0.920	132.710	6318.90	-223.11	218.89	388.87	40°05'14.870"N	104°41'40.590"W	0.44	
6690.00	1.100	168.970	6647.85	-218.25	214.00	391.41	40°05'14.822"N	104°41'40.557"W	0.20	
6722.00	0.820	166.770	6679.84	-217.73	213.48	391.53	40°05'14.817"N	104°41'40.556"W	0.88	
6812.00	8.640	179.340	6769.47	-210.33	206.08	391.75	40°05'14.743"N	104°41'40.553"W	8.71	
6902.00	22.360	178.340	6855.99	-186.35	182.09	392.33	40°05'14.506"N	104°41'40.545"W	15.25	
6992.00	29.040	176.410	6937.04	-147.42	143.13	394.19	40°05'14.121"N	104°41'40.521"W	7.48	
7082.00	30.300	176.930	7015.24	-102.98	98.66	396.78	40°05'13.682"N	104°41'40.488"W	1.43	
7172.00	38.140	178.040	7089.60	-52.48	48.14	398.95	40°05'13.183"N	104°41'40.460"W	8.74	
7262.00	47.820	177.780	7155.37	8.74	-13.11	401.19	40°05'12.577"N	104°41'40.431"W	10.76	
7352.00	54.410	177.850	7211.83	78.67	-83.07	403.86	40°05'11.886"N	104°41'40.397"W	7.32	
7397.00	55.960	177.770	7237.52	115.57	-119.99	405.27	40°05'11.521"N	104°41'40.379"W	3.45	
7442.00	57.600	177.230	7262.18	153.16	-157.60	406.92	40°05'11.150"N	104°41'40.358"W	3.78	
7487.00	62.930	176.970	7284.49	192.15	-196.61	408.90	40°05'10.764"N	104°41'40.332"W	11.86	
7532.00	69.510	178.040	7302.62	233.24	-237.73	410.68	40°05'10.358"N	104°41'40.309"W	14.78	
7577.00	77.240	178.510	7315.49	276.29	-280.79	411.97	40°05'09.932"N	104°41'40.293"W	17.21	
7622.00	84.900	179.040	7322.47	320.69	-325.21	412.92	40°05'09.493"N	104°41'40.280"W	17.06	
7667.00	89.290	180.850	7324.75	365.62	-370.13	412.96	40°05'09.049"N	104°41'40.280"W	10.55	
7713.00†	90.812	182.707	7324.71	411.60	-416.11	411.53	40°05'08.595"N	104°41'40.298"W	5.22	7" Casing Point
7748.00	91.970	184.120	7323.86	446.55	-451.04	409.45	40°05'08.250"N	104°41'40.325"W	5.22	
7808.00	92.190	183.240	7321.68	506.42	-510.87	405.60	40°05'07.658"N	104°41'40.375"W	1.51	
7898.00	89.930	183.360	7320.02	596.30	-600.70	400.42	40°05'06.771"N	104°41'40.441"W	2.51	
7988.00	89.810	184.510	7320.22	686.15	-690.49	394.25	40°05'05.883"N	104°41'40.521"W	1.28	
8078.00	90.580	183.960	7319.91	775.97	-780.24	387.60	40°05'04.997"N	104°41'40.606"W	1.05	
8168.00	89.720	184.280	7319.68	865.80	-870.01	381.13	40°05'04.109"N	104°41'40.690"W	1.02	
8258.00	89.130	183.900	7320.58	955.63	-959.77	374.72	40°05'03.222"N	104°41'40.772"W	0.78	
8348.00	89.660	182.880	7321.53	1045.52	-1049.61	369.39	40°05'02.335"N	104°41'40.841"W	1.28	
8438.00	90.360	181.800	7321.52	1135.48	-1139.53	365.72	40°05'01.446"N	104°41'40.888"W	1.43	
8528.00	89.320	182.550	7321.77	1225.45	-1229.46	362.30	40°05'00.557"N	104°41'40.932"W	1.42	
8619.00	89.500	181.370	7322.70	1316.41	-1320.40	359.19	40°04'59.659"N	104°41'40.972"W	1.31	
8709.00	89.130	183.330	7323.78	1406.36	-1410.32	355.50	40°04'58.770"N	104°41'41.019"W	2.22	
8799.00	89.440	183.490	7324.90	1496.25	-1500.15	350.15	40°04'57.882"N	104°41'41.088"W	0.39	
8889.00	87.560	182.140	7327.26	1586.15	-1590.01	345.73	40°04'56.994"N	104°41'41.145"W	2.57	
8979.00	88.820	181.640	7330.10	1676.08	-1679.91	342.76	40°04'56.106"N	104°41'41.183"W	1.51	
9069.00	90.210	180.600	7330.86	1766.07	-1769.89	341.00	40°04'55.217"N	104°41'41.206"W	1.93	
9159.00	90.490	178.920	7330.31	1856.05	-1859.88	341.38	40°04'54.327"N	104°41'41.201"W	1.89	
9249.00	90.300	176.780	7329.69	1945.94	-1949.81	344.76	40°04'53.439"N	104°41'41.158"W	2.39	
9339.00	90.030	176.990	7329.43	2035.75	-2039.68	349.65	40°04'52.551"N	104°41'41.095"W	0.38	
9429.00	89.840	175.620	7329.54	2125.49	-2129.49	355.45	40°04'51.663"N	104°41'41.020"W	1.54	
9519.00	89.840	176.240	7329.79	2215.19	-2219.26	361.84	40°04'50.776"N	104°41'40.938"W	0.69	
9609.00	89.290	177.140	7330.47	2304.97	-2309.10	367.03	40°04'49.888"N	104°41'40.871"W	1.17	
9699.00	90.550	179.890	7330.60	2394.90	-2399.06	369.36	40°04'48.999"N	104°41'40.841"W	3.36	
9789.00	90.000	178.610	7330.17	2484.87	-2489.05	370.54	40°04'48.110"N	104°41'40.826"W	1.55	
9879.00	90.180	178.970	7330.02	2574.82	-2579.03	372.44	40°04'47.221"N	104°41'40.802"W	0.45	

REFERENCE WELLPATH IDENTIFICATION

Operator	KERR-MCGEE OIL & GAS ONSHORE LP	Slot	SLOT#05 ZIEMER 13C-5HZ (265'FNL & 309'FWL, SEC.05)
Area	COLORADO	Well	ZIEMER 13C-5HZ
Field	WELD COUNTY (KERR MCGEE)	Wellbore	ZIEMER 13C-5HZ AWB
Facility	SEC.05-T1N-R65W		

WELLPATH DATA (111 stations)

MD [ft]	Inclination [°]	Azimuth [°]	TVD [ft]	Vert Sect [ft]	North [ft]	East [ft]	Latitude	Longitude	DLS [°/100ft]	Comments
9969.00	90.980	180.640	7329.11	2664.81	-2669.02	372.75	40°04'46.331"N	104°41'40.798"W	2.06	
10059.00	89.780	181.520	7328.52	2754.80	-2759.00	371.05	40°04'45.442"N	104°41'40.820"W	1.65	
10149.00	89.780	181.040	7328.86	2844.79	-2848.98	369.04	40°04'44.553"N	104°41'40.845"W	0.53	
10239.00	88.060	181.600	7330.56	2934.77	-2938.94	366.97	40°04'43.664"N	104°41'40.872"W	2.01	
10329.00	89.010	181.170	7332.86	3024.73	-3028.88	364.80	40°04'42.775"N	104°41'40.900"W	1.16	
10419.00	88.460	181.620	7334.85	3114.70	-3118.83	362.60	40°04'41.886"N	104°41'40.928"W	0.79	
10509.00	88.370	181.910	7337.33	3204.64	-3208.75	359.83	40°04'40.998"N	104°41'40.964"W	0.34	
10599.00	86.820	182.730	7341.11	3294.52	-3298.60	356.19	40°04'40.110"N	104°41'41.011"W	1.95	
10689.00	86.980	182.250	7345.98	3384.34	-3388.38	352.29	40°04'39.222"N	104°41'41.061"W	0.56	
10779.00	87.910	181.920	7349.99	3474.22	-3478.23	349.02	40°04'38.334"N	104°41'41.103"W	1.10	
10869.00	89.540	182.890	7351.99	3564.15	-3568.12	345.24	40°04'37.446"N	104°41'41.152"W	2.11	
10959.00	90.000	182.740	7352.35	3654.09	-3658.01	340.82	40°04'36.558"N	104°41'41.209"W	0.54	
11050.00	89.140	181.690	7353.04	3745.05	-3748.94	337.31	40°04'35.659"N	104°41'41.254"W	1.49	
11140.00	88.710	181.680	7354.73	3835.01	-3838.89	334.66	40°04'34.770"N	104°41'41.288"W	0.48	
11230.00	88.580	182.560	7356.85	3924.96	-3928.80	331.33	40°04'33.882"N	104°41'41.331"W	0.99	
11320.00	88.210	182.710	7359.38	4014.87	-4018.67	327.20	40°04'32.994"N	104°41'41.384"W	0.44	
11410.00	90.220	181.180	7360.61	4104.83	-4108.60	324.14	40°04'32.105"N	104°41'41.423"W	2.81	
11500.00	90.860	181.580	7359.76	4194.81	-4198.57	321.98	40°04'31.216"N	104°41'41.451"W	0.84	
11590.00	90.730	181.180	7358.51	4284.80	-4288.53	319.81	40°04'30.327"N	104°41'41.479"W	0.47	
11710.00	92.080	181.600	7355.57	4404.75	-4408.46	316.90	40°04'29.142"N	104°41'41.517"W	1.18	Last BHI MWD Surveys
11765.00	92.080	181.600	7353.57	4459.70	-4463.40	315.36	40°04'28.599"N	104°41'41.536"W	0.00	Projection to Bit

HOLE & CASING SECTIONS - Ref Wellbore: ZIEMER 13C-5HZ AWB Ref Wellpath: ZIEMER 13C-5HZ AWP

String/Diameter	Start MD [ft]	End MD [ft]	Interval [ft]	Start TVD [ft]	End TVD [ft]	Start N/S [ft]	Start E/W [ft]	End N/S [ft]	End E/W [ft]
13.5in Open Hole	13.00	1115.00	1102.00	13.00	1114.97	0.00	0.00	-3.93	-4.36
9.625in Casing Surface	13.00	1102.00	1089.00	13.00	1101.97	0.00	0.00	-3.98	-4.39
8.75in Open Hole	1115.00	7723.00	6608.00	1114.97	7324.54	-3.93	-4.36	-426.10	411.03
7in Casing Intermediate	13.00	7713.00	7700.00	13.00	7324.71	0.00	0.00	-416.11	411.53
6.125in Open Hole	7723.00	11765.00	4042.00	7324.54	7353.57	-426.10	411.03	-4463.40	315.36

REFERENCE WELLPATH IDENTIFICATION			
Operator	KERR-MCGEE OIL & GAS ONSHORE LP	Slot	SLOT#05 ZIEMER 13C-5HZ (265'FNL & 309'FWL, SEC.05)
Area	COLORADO	Well	ZIEMER 13C-5HZ
Field	WELD COUNTY (KERR MCGEE)	Wellbore	ZIEMER 13C-5HZ AWB
Facility	SEC.05-T1N-R65W		

TARGETS									
Name	MD [ft]	TVD [ft]	North [ft]	East [ft]	Grid East [US ft]	Grid North [US ft]	Latitude	Longitude	Shape
ZIEMER PAD HARDLINES LINES (460' SETBACKS SEC.05)		4970.00	-4577.60	2563.83	3227559.17	1270954.76	40°04'27.469"N	104°41'12.613"W	polygon
ZIEMER PAD SECTION LINES (SEC.05)		4970.00	-4577.60	2563.83	3227559.17	1270954.76	40°04'27.469"N	104°41'12.613"W	polygon
ZIEMER 13C-5HZ BHL ON PLAT REV-2 (460'FSL & 690'FWL, SEC.05)		7333.00	-4488.48	335.60	3225330.32	1271023.67	40°04'28.351"N	104°41'41.276"W	point
ZIEMER 13C-5HZ LANDBOX		7333.00	0.00	0.00	3224954.06	1275508.74	40°05'12.707"N	104°41'45.593"W	polygon
ZIEMER 13C-5HZ BHL ON PLAT REV-1 (460'FSL & 690'FWL, SEC.05)		7337.00	-4488.46	335.57	3225330.29	1271023.69	40°04'28.351"N	104°41'41.276"W	point

WELLPATH COMPOSITION - Ref Wellbore: ZIEMER 13C-5HZ AWB Ref Wellpath: ZIEMER 13C-5HZ AWP				
Start MD [ft]	End MD [ft]	Positional Uncertainty Model	Log Name/Comment	Wellbore
13.00	1048.00	NaviTrak (MagCorr)	BHI MWD SURVEYS 13 1/2" HOLE <145-1048>	ZIEMER 13C-5HZ AWB
1048.00	7667.00	NaviTrak (MagCorr)	BHI MWD SURVEYS 8 3/4" HOLE <1198-7667>	ZIEMER 13C-5HZ AWB
7667.00	11710.00	OnTrak (MagCorr)	BHI MWD SURVEYS 6 1/8" HOLE <7748-11710>	ZIEMER 13C-5HZ AWB
11710.00	11765.00	Blind Drilling (std)	Projection to bit	ZIEMER 13C-5HZ AWB

Actual Wellpath Report

ZIEMER 13C-5HZ AWP

Page 6 of 6

REFERENCE WELLPATH IDENTIFICATION

Operator	KERR-MCGEE OIL & GAS ONSHORE LP	Slot	SLOT#05 ZIEMER 13C-5HZ (265'FNL & 309'FWL, SEC.05)
Area	COLORADO	Well	ZIEMER 13C-5HZ
Field	WELD COUNTY (KERR MCGEE)	Wellbore	ZIEMER 13C-5HZ AWB
Facility	SEC.05-T1N-R65W		

WELLPATH COMMENTS

MD [ft]	Inclination [°]	Azimuth [°]	TVD [ft]	Comment
13.00	0.000	214.360	13.00	Tie-On
145.00	0.150	214.360	145.00	Begin BHI MWD Surveys
7713.00	90.812	182.707	7324.71	7" Casing Point
11710.00	92.080	181.600	7355.57	Last BHI MWD Surveys
11765.00	92.080	181.600	7353.57	Projection to Bit