

# **BILL BARRETT CORP**

**WELD COUNTY, COLORADO**

**Anschutz State 4-62-2 Pad**

**ANSCHUTZ STATE 4-62-2-3228BH2**

**Wellbore #1**

**Plan: Design #1**

## **Standard Planning Report**

**13 January, 2014**



**Bill Barrett Corporation**

## COMPANY DETAILS: BILL BARRETT CORP

Calculation Method: Minimum Curvature  
Error System: ISCWSA  
Scan Method: Closest Approach 3D  
Error Surface: Elliptical Conic  
Warning Method: Error Ratio

## REFERENCE INFORMATION

Co-ordinate (N/E) Reference: Well ANSCHUTZ STATE 4-62-2-3228BH2, True North  
Vertical (TVD) Reference: KB @ 4566.0ft (Original Well Elev)  
Section (VS) Reference: Slot - (0.0N, 0.0E)  
Measured Depth Reference: KB @ 4566.0ft (Original Well Elev)  
Calculation Method: Minimum Curvature

## WELL DETAILS: ANSCHUTZ STATE 4-62-2-3228BH2

+N/-S	+E/-W	Northing	Easting	Latitude	Longitude
0.0	0.0	1370656.33	3333998.17	40° 20' 40.769 N	104° 18' 6.160 W

## SECTION DETAILS

Sec	MD	Inc	Azi	TVD	+N/-S	+E/-W	DLeg	TFace	VSec	Target
1	0.0	0.00	0.00	0.0	0.0	0.0	0.00	0.00	0.0	
2	1000.0	0.00	0.00	1000.0	0.0	0.0	0.00	0.00	0.0	
3	1450.5	9.01	199.41	1448.6	-33.3	-11.7	2.00	199.41	-9.9	
4	4955.0	9.01	199.41	4909.9	-551.0	-194.1	0.00	0.00	-164.0	
5	5405.5	0.00	88.96	5358.5	-584.3	-205.8	2.00	180.00	-173.9	
6	5655.5	0.00	88.96	5608.5	-584.3	-205.8	0.00	88.96	-173.9	
7	6408.0	90.30	88.96	6086.0	-575.6	274.0	12.00	88.96	304.8	AS 2-3228BH2 LP
8	14147.0	90.30	88.96	6046.0	-434.7	8011.6	0.00	0.00	8023.4	AS 2-3228BH2 PBHL

## PROJECT DETAILS: WELD COUNTY, COLORADO

Geodetic System: US State Plane 1983  
Datum: North American Datum 1983  
Ellipsoid: GRS 1980  
Zone: Colorado Northern Zone

## FORMATION TOP DETAILS

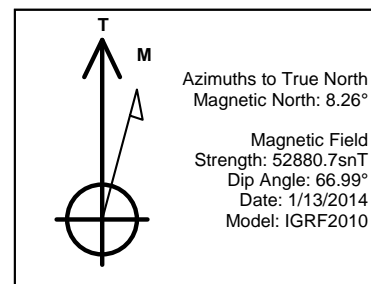
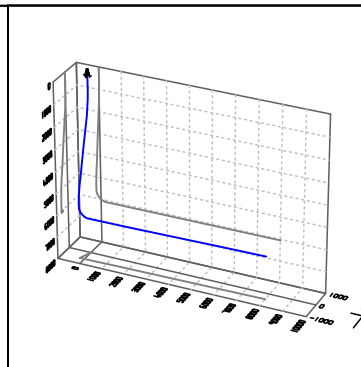
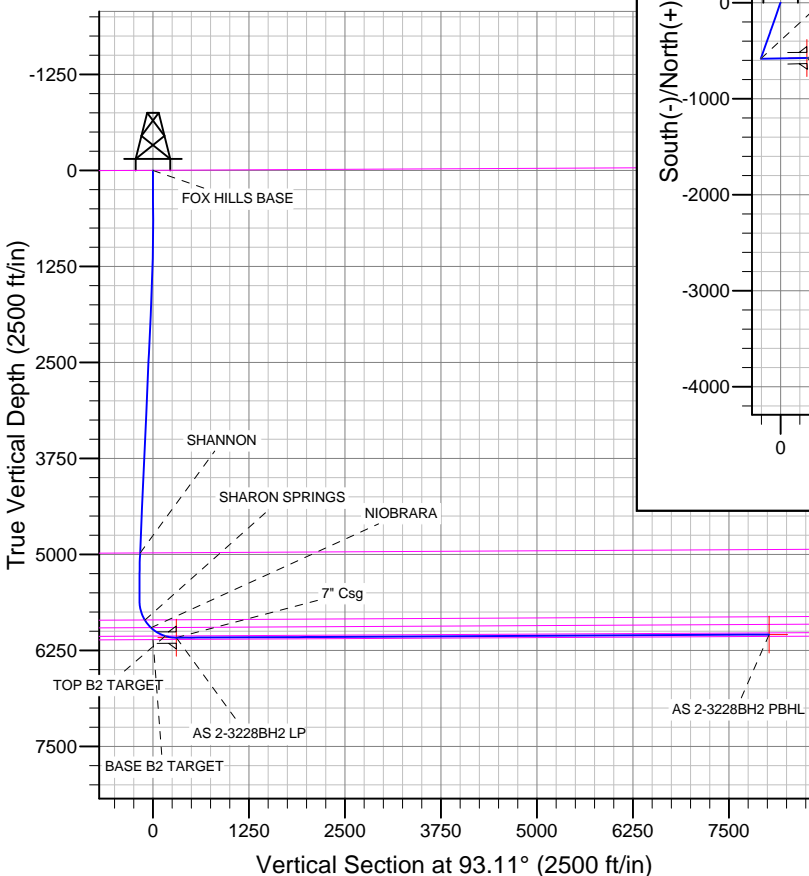
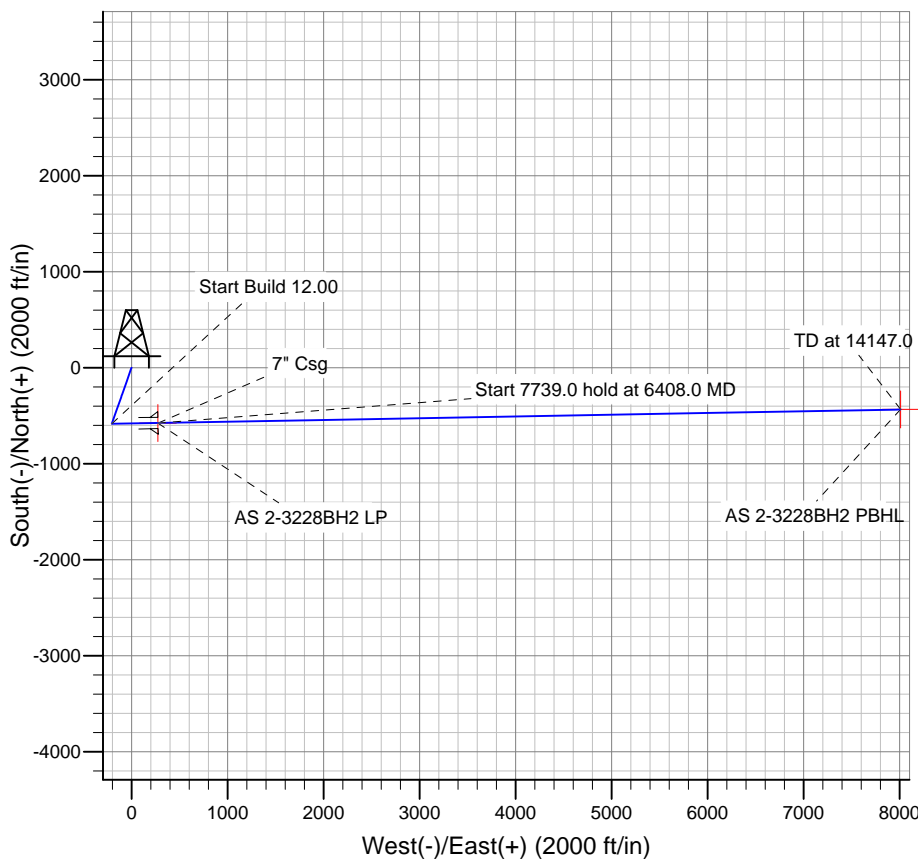
TVDPath	MDPath	Formation
		BASE B2 TARGET
		FOX HILLS BASE
4983.1	5029.0	SHANNON
5856.8	5916.5	SHARON SPRINGS
5956.3	6045.1	NIOBRARA
6064.4	6261.2	TOP B2 TARGET

## WELLBORE TARGET DETAILS

Name	TVD	+N/-S	+E/-W	Shape
AS 2-3228BH2 PBHL	6046.0	-434.7	8011.6	Point
AS 2-3228BH2 LP	6086.0	-575.6	274.0	Point

## CASING DETAILS

TVD	MD	Name	Size
6086.0	6410.0	7" Csg	7



# Bill Barrett Corp

## Planning Report

<b>Database:</b>	Compass	<b>Local Co-ordinate Reference:</b>	Well ANSCHUTZ STATE 4-62-2-3228BH2
<b>Company:</b>	BILL BARRETT CORP	<b>TVD Reference:</b>	KB @ 4566.0ft (Original Well Elev)
<b>Project:</b>	WELD COUNTY, COLORADO	<b>MD Reference:</b>	KB @ 4566.0ft (Original Well Elev)
<b>Site:</b>	Anschutz State 4-62-2 Pad	<b>North Reference:</b>	True
<b>Well:</b>	ANSCHUTZ STATE 4-62-2-3228BH2	<b>Survey Calculation Method:</b>	Minimum Curvature
<b>Wellbore:</b>	Wellbore #1		
<b>Design:</b>	Design #1		

<b>Project</b>	WELD COUNTY, COLORADO		
<b>Map System:</b>	US State Plane 1983	<b>System Datum:</b>	Mean Sea Level
<b>Geo Datum:</b>	North American Datum 1983		
<b>Map Zone:</b>	Colorado Northern Zone		

Site		Anschutz State 4-62-2 Pad				
Site Position:		Northing:	1,370,746.63ft	Latitude:	40° 20' 41.662 N	
From:	Lat/Long	Easting:	3,333,993.88ft	Longitude:	104° 18' 6.199 W	
Position Uncertainty:		0.0 ft	Slot Radius:	"	Grid Convergence:	0.77 °

Well	ANSCHUTZ STATE 4-62-2-3228BH2					
Well Position	+N-S	-90.4 ft	Northing:	1,370,656.33 ft	Latitude:	40° 20' 40.769 N
	+E-W	3.1 ft	Easting:	3,333,998.17 ft	Longitude:	104° 18' 6.160 W
Position Uncertainty		0.0 ft	Wellhead Elevation:	ft	Ground Level:	4,544.0 ft

<b>Wellbore</b>	Wellbore #1				
<b>Magnetics</b>	<b>Model Name</b>	<b>Sample Date</b>	<b>Declination (°)</b>	<b>Dip Angle (°)</b>	<b>Field Strength (nT)</b>
	IGRF2010	1/13/2014	8.26	66.99	52,881

<b>Design</b>	Design #1				
<b>Audit Notes:</b>					
<b>Version:</b>	<b>Phase:</b>	PLAN	<b>Tie On Depth:</b>	0.0	
<b>Vertical Section:</b>	<b>Depth From (TVD) (ft)</b>	<b>+N/-S (ft)</b>	<b>+E/-W (ft)</b>	<b>Direction (°)</b>	
	0.0	0.0	0.0	93.11	

<b>Plan Sections</b>										
Measured Depth (ft)	Inclination (°)	Azimuth (°)	Vertical Depth (ft)	+N/-S (ft)	+E/-W (ft)	Dogleg Rate (°/100ft)	Build Rate (°/100ft)	Turn Rate (°/100ft)	TFO (°)	Target
0.0	0.00	0.00	0.0	0.0	0.0	0.00	0.00	0.00	0.00	
1,000.0	0.00	0.00	1,000.0	0.0	0.0	0.00	0.00	0.00	0.00	
1,450.5	9.01	199.41	1,448.6	-33.3	-11.7	2.00	2.00	0.00	199.41	
4,955.0	9.01	199.41	4,909.9	-551.0	-194.1	0.00	0.00	0.00	0.00	
5,405.5	0.00	88.96	5,358.5	-584.3	-205.8	2.00	-2.00	0.00	180.00	
5,655.5	0.00	88.96	5,608.5	-584.3	-205.8	0.00	0.00	0.00	88.96	
6,408.0	90.30	88.96	6,086.0	-575.6	274.0	12.00	12.00	0.00	88.96	AS 2-3228BH2 LP
14,147.0	90.30	88.96	6,046.0	-434.7	8,011.6	0.00	0.00	0.00	0.00	AS 2-3228BH2 PB

# Bill Barrett Corp

## Planning Report

<b>Database:</b>	Compass	<b>Local Co-ordinate Reference:</b>	Well ANSCHUTZ STATE 4-62-2-3228BH2
<b>Company:</b>	BILL BARRETT CORP	<b>TVD Reference:</b>	KB @ 4566.0ft (Original Well Elev)
<b>Project:</b>	WELD COUNTY, COLORADO	<b>MD Reference:</b>	KB @ 4566.0ft (Original Well Elev)
<b>Site:</b>	Anschutz State 4-62-2 Pad	<b>North Reference:</b>	True
<b>Well:</b>	ANSCHUTZ STATE 4-62-2-3228BH2	<b>Survey Calculation Method:</b>	Minimum Curvature
<b>Wellbore:</b>	Wellbore #1		
<b>Design:</b>	Design #1		

Planned Survey									
Measured Depth (ft)	Inclination (°)	Azimuth (°)	Vertical Depth (ft)	+N/-S (ft)	+E/-W (ft)	Vertical Section (ft)	Dogleg Rate (°/100ft)	Build Rate (°/100ft)	Turn Rate (°/100ft)
0.0	0.00	0.00	0.0	0.0	0.0	0.0	0.00	0.00	0.00
100.0	0.00	0.00	100.0	0.0	0.0	0.0	0.00	0.00	0.00
200.0	0.00	0.00	200.0	0.0	0.0	0.0	0.00	0.00	0.00
300.0	0.00	0.00	300.0	0.0	0.0	0.0	0.00	0.00	0.00
400.0	0.00	0.00	400.0	0.0	0.0	0.0	0.00	0.00	0.00
500.0	0.00	0.00	500.0	0.0	0.0	0.0	0.00	0.00	0.00
600.0	0.00	0.00	600.0	0.0	0.0	0.0	0.00	0.00	0.00
700.0	0.00	0.00	700.0	0.0	0.0	0.0	0.00	0.00	0.00
800.0	0.00	0.00	800.0	0.0	0.0	0.0	0.00	0.00	0.00
900.0	0.00	0.00	900.0	0.0	0.0	0.0	0.00	0.00	0.00
1,000.0	0.00	0.00	1,000.0	0.0	0.0	0.0	0.00	0.00	0.00
1,100.0	2.00	199.41	1,100.0	-1.6	-0.6	-0.5	2.00	2.00	0.00
1,200.0	4.00	199.41	1,199.8	-6.6	-2.3	-2.0	2.00	2.00	0.00
1,300.0	6.00	199.41	1,299.5	-14.8	-5.2	-4.4	2.00	2.00	0.00
1,400.0	8.00	199.41	1,398.7	-26.3	-9.3	-7.8	2.00	2.00	0.00
1,450.5	9.01	199.41	1,448.6	-33.3	-11.7	-9.9	2.00	2.00	0.00
1,500.0	9.01	199.41	1,497.5	-40.7	-14.3	-12.1	0.00	0.00	0.00
1,600.0	9.01	199.41	1,596.3	-55.4	-19.5	-16.5	0.00	0.00	0.00
1,700.0	9.01	199.41	1,695.1	-70.2	-24.7	-20.9	0.00	0.00	0.00
1,800.0	9.01	199.41	1,793.8	-85.0	-29.9	-25.3	0.00	0.00	0.00
1,900.0	9.01	199.41	1,892.6	-99.7	-35.1	-29.7	0.00	0.00	0.00
2,000.0	9.01	199.41	1,991.4	-114.5	-40.3	-34.1	0.00	0.00	0.00
2,100.0	9.01	199.41	2,090.1	-129.3	-45.5	-38.5	0.00	0.00	0.00
2,200.0	9.01	199.41	2,188.9	-144.0	-50.7	-42.9	0.00	0.00	0.00
2,300.0	9.01	199.41	2,287.7	-158.8	-55.9	-47.3	0.00	0.00	0.00
2,400.0	9.01	199.41	2,386.4	-173.6	-61.2	-51.7	0.00	0.00	0.00
2,500.0	9.01	199.41	2,485.2	-188.4	-66.4	-56.1	0.00	0.00	0.00
2,600.0	9.01	199.41	2,584.0	-203.1	-71.6	-60.4	0.00	0.00	0.00
2,700.0	9.01	199.41	2,682.7	-217.9	-76.8	-64.8	0.00	0.00	0.00
2,800.0	9.01	199.41	2,781.5	-232.7	-82.0	-69.2	0.00	0.00	0.00
2,900.0	9.01	199.41	2,880.3	-247.4	-87.2	-73.6	0.00	0.00	0.00
3,000.0	9.01	199.41	2,979.0	-262.2	-92.4	-78.0	0.00	0.00	0.00
3,100.0	9.01	199.41	3,077.8	-277.0	-97.6	-82.4	0.00	0.00	0.00
3,200.0	9.01	199.41	3,176.6	-291.7	-102.8	-86.8	0.00	0.00	0.00
3,300.0	9.01	199.41	3,275.3	-306.5	-108.0	-91.2	0.00	0.00	0.00
3,400.0	9.01	199.41	3,374.1	-321.3	-113.2	-95.6	0.00	0.00	0.00
3,500.0	9.01	199.41	3,472.9	-336.1	-118.4	-100.0	0.00	0.00	0.00
3,600.0	9.01	199.41	3,571.6	-350.8	-123.6	-104.4	0.00	0.00	0.00
3,700.0	9.01	199.41	3,670.4	-365.6	-128.8	-108.8	0.00	0.00	0.00
3,800.0	9.01	199.41	3,769.2	-380.4	-134.0	-113.2	0.00	0.00	0.00
3,900.0	9.01	199.41	3,867.9	-395.1	-139.2	-117.6	0.00	0.00	0.00
4,000.0	9.01	199.41	3,966.7	-409.9	-144.4	-122.0	0.00	0.00	0.00
4,100.0	9.01	199.41	4,065.5	-424.7	-149.6	-126.4	0.00	0.00	0.00
4,200.0	9.01	199.41	4,164.2	-439.5	-154.8	-130.8	0.00	0.00	0.00
4,300.0	9.01	199.41	4,263.0	-454.2	-160.0	-135.2	0.00	0.00	0.00
4,400.0	9.01	199.41	4,361.8	-469.0	-165.2	-139.6	0.00	0.00	0.00
4,500.0	9.01	199.41	4,460.5	-483.8	-170.4	-144.0	0.00	0.00	0.00
4,600.0	9.01	199.41	4,559.3	-498.5	-175.6	-148.4	0.00	0.00	0.00
4,700.0	9.01	199.41	4,658.1	-513.3	-180.8	-152.8	0.00	0.00	0.00
4,800.0	9.01	199.41	4,756.8	-528.1	-186.0	-157.2	0.00	0.00	0.00
4,900.0	9.01	199.41	4,855.6	-542.8	-191.2	-161.5	0.00	0.00	0.00
4,955.0	9.01	199.41	4,909.9	-551.0	-194.1	-164.0	0.00	0.00	0.00
5,000.0	8.11	199.41	4,954.4	-557.3	-196.3	-165.8	2.00	-2.00	0.00
5,029.0	7.53	199.41	4,983.1	-561.0	-197.6	-167.0	2.00	-2.00	0.00

# Bill Barrett Corp

## Planning Report

<b>Database:</b>	Compass	<b>Local Co-ordinate Reference:</b>	Well ANSCHUTZ STATE 4-62-2-3228BH2
<b>Company:</b>	BILL BARRETT CORP	<b>TVD Reference:</b>	KB @ 4566.0ft (Original Well Elev)
<b>Project:</b>	WELD COUNTY, COLORADO	<b>MD Reference:</b>	KB @ 4566.0ft (Original Well Elev)
<b>Site:</b>	Anschutz State 4-62-2 Pad	<b>North Reference:</b>	True
<b>Well:</b>	ANSCHUTZ STATE 4-62-2-3228BH2	<b>Survey Calculation Method:</b>	Minimum Curvature
<b>Wellbore:</b>	Wellbore #1		
<b>Design:</b>	Design #1		

Planned Survey									
Measured Depth (ft)	Inclination (°)	Azimuth (°)	Vertical Depth (ft)	+N/-S (ft)	+E/-W (ft)	Vertical Section (ft)	Dogleg Rate (°/100ft)	Build Rate (°/100ft)	Turn Rate (°/100ft)
<b>SHANNON</b>									
5,100.0	6.11	199.41	5,053.6	-569.0	-200.4	-169.3	2.00	-2.00	0.00
5,200.0	4.11	199.41	5,153.2	-577.4	-203.4	-171.8	2.00	-2.00	0.00
5,300.0	2.11	199.41	5,253.1	-582.5	-205.2	-173.3	2.00	-2.00	0.00
5,400.0	0.11	199.41	5,353.1	-584.3	-205.8	-173.9	2.00	-2.00	0.00
5,405.5	0.00	88.96	5,358.5	-584.3	-205.8	-173.9	2.00	-2.00	0.00
5,500.0	0.00	88.96	5,453.1	-584.3	-205.8	-173.9	0.00	0.00	0.00
5,600.0	0.00	88.96	5,553.1	-584.3	-205.8	-173.9	0.00	0.00	0.00
5,655.5	0.00	88.96	5,608.5	-584.3	-205.8	-173.9	0.00	0.00	0.00
5,700.0	5.34	88.96	5,653.0	-584.3	-203.8	-171.8	12.00	12.00	0.00
5,800.0	17.34	88.96	5,750.9	-583.9	-184.1	-152.2	12.00	12.00	0.00
5,900.0	29.34	88.96	5,842.5	-583.2	-144.6	-112.8	12.00	12.00	0.00
5,916.5	31.32	88.96	5,856.8	-583.0	-136.3	-104.5	12.00	12.00	0.00
<b>SHARON SPRINGS</b>									
6,000.0	41.34	88.96	5,923.9	-582.1	-86.9	-55.2	12.00	12.00	0.00
6,045.1	46.76	88.96	5,956.3	-581.6	-55.5	-23.9	12.00	12.00	0.00
<b>NIOBRARA</b>									
6,100.0	53.34	88.96	5,991.6	-580.8	-13.5	18.0	12.00	12.00	0.00
6,200.0	65.34	88.96	6,042.5	-579.2	72.4	103.6	12.00	12.00	0.00
6,261.2	72.69	88.96	6,064.4	-578.2	129.5	160.6	12.00	12.00	0.00
<b>TOP B2 TARGET</b>									
6,300.0	77.34	88.96	6,074.4	-577.5	166.9	198.0	12.00	12.00	0.00
6,400.0	89.34	88.96	6,086.0	-575.7	266.0	296.9	12.00	12.00	0.00
6,408.0	90.30	88.96	6,086.0	-575.6	274.0	304.8	12.00	12.00	0.00
<b>AS 2-3228BH2 LP</b>									
6,410.0	90.30	88.96	6,086.0	-575.5	276.0	306.8	0.00	0.00	0.00
<b>7" Csg</b>									
6,500.0	90.30	88.96	6,085.5	-573.9	366.0	396.6	0.00	0.00	0.00
6,600.0	90.30	88.96	6,085.0	-572.1	466.0	496.3	0.00	0.00	0.00
6,700.0	90.30	88.96	6,084.5	-570.3	566.0	596.1	0.00	0.00	0.00
6,800.0	90.30	88.96	6,084.0	-568.4	666.0	695.8	0.00	0.00	0.00
6,900.0	90.30	88.96	6,083.5	-566.6	766.0	795.5	0.00	0.00	0.00
7,000.0	90.30	88.96	6,082.9	-564.8	865.9	895.3	0.00	0.00	0.00
7,100.0	90.30	88.96	6,082.4	-563.0	965.9	995.0	0.00	0.00	0.00
7,200.0	90.30	88.96	6,081.9	-561.2	1,065.9	1,094.7	0.00	0.00	0.00
7,300.0	90.30	88.96	6,081.4	-559.3	1,165.9	1,194.5	0.00	0.00	0.00
7,400.0	90.30	88.96	6,080.9	-557.5	1,265.9	1,294.2	0.00	0.00	0.00
7,500.0	90.30	88.96	6,080.4	-555.7	1,365.9	1,394.0	0.00	0.00	0.00
7,600.0	90.30	88.96	6,079.8	-553.9	1,465.8	1,493.7	0.00	0.00	0.00
7,700.0	90.30	88.96	6,079.3	-552.1	1,565.8	1,593.4	0.00	0.00	0.00
7,800.0	90.30	88.96	6,078.8	-550.2	1,665.8	1,693.2	0.00	0.00	0.00
7,900.0	90.30	88.96	6,078.3	-548.4	1,765.8	1,792.9	0.00	0.00	0.00
8,000.0	90.30	88.96	6,077.8	-546.6	1,865.8	1,892.6	0.00	0.00	0.00
8,100.0	90.30	88.96	6,077.3	-544.8	1,965.7	1,992.4	0.00	0.00	0.00
8,200.0	90.30	88.96	6,076.7	-543.0	2,065.7	2,092.1	0.00	0.00	0.00
8,300.0	90.30	88.96	6,076.2	-541.1	2,165.7	2,191.8	0.00	0.00	0.00
8,400.0	90.30	88.96	6,075.7	-539.3	2,265.7	2,291.6	0.00	0.00	0.00
8,500.0	90.30	88.96	6,075.2	-537.5	2,365.7	2,391.3	0.00	0.00	0.00
8,600.0	90.30	88.96	6,074.7	-535.7	2,465.7	2,491.1	0.00	0.00	0.00
8,700.0	90.30	88.96	6,074.2	-533.9	2,565.6	2,590.8	0.00	0.00	0.00
8,800.0	90.30	88.96	6,073.6	-532.0	2,665.6	2,690.5	0.00	0.00	0.00
8,900.0	90.30	88.96	6,073.1	-530.2	2,765.6	2,790.3	0.00	0.00	0.00
9,000.0	90.30	88.96	6,072.6	-528.4	2,865.6	2,890.0	0.00	0.00	0.00

# Bill Barrett Corp

## Planning Report

<b>Database:</b>	Compass	<b>Local Co-ordinate Reference:</b>	Well ANSCHUTZ STATE 4-62-2-3228BH2
<b>Company:</b>	BILL BARRETT CORP	<b>TVD Reference:</b>	KB @ 4566.0ft (Original Well Elev)
<b>Project:</b>	WELD COUNTY, COLORADO	<b>MD Reference:</b>	KB @ 4566.0ft (Original Well Elev)
<b>Site:</b>	Anschutz State 4-62-2 Pad	<b>North Reference:</b>	True
<b>Well:</b>	ANSCHUTZ STATE 4-62-2-3228BH2	<b>Survey Calculation Method:</b>	Minimum Curvature
<b>Wellbore:</b>	Wellbore #1		
<b>Design:</b>	Design #1		

Planned Survey									
Measured Depth (ft)	Inclination (°)	Azimuth (°)	Vertical Depth (ft)	+N/-S (ft)	+E/-W (ft)	Vertical Section (ft)	Dogleg Rate (°/100ft)	Build Rate (°/100ft)	Turn Rate (°/100ft)
9,100.0	90.30	88.96	6,072.1	-526.6	2,965.6	2,989.7	0.00	0.00	0.00
9,200.0	90.30	88.96	6,071.6	-524.8	3,065.5	3,089.5	0.00	0.00	0.00
9,300.0	90.30	88.96	6,071.1	-522.9	3,165.5	3,189.2	0.00	0.00	0.00
9,400.0	90.30	88.96	6,070.5	-521.1	3,265.5	3,288.9	0.00	0.00	0.00
9,500.0	90.30	88.96	6,070.0	-519.3	3,365.5	3,388.7	0.00	0.00	0.00
9,600.0	90.30	88.96	6,069.5	-517.5	3,465.5	3,488.4	0.00	0.00	0.00
9,700.0	90.30	88.96	6,069.0	-515.7	3,565.5	3,588.2	0.00	0.00	0.00
9,800.0	90.30	88.96	6,068.5	-513.8	3,665.4	3,687.9	0.00	0.00	0.00
9,900.0	90.30	88.96	6,068.0	-512.0	3,765.4	3,787.6	0.00	0.00	0.00
10,000.0	90.30	88.96	6,067.4	-510.2	3,865.4	3,887.4	0.00	0.00	0.00
10,100.0	90.30	88.96	6,066.9	-508.4	3,965.4	3,987.1	0.00	0.00	0.00
10,200.0	90.30	88.96	6,066.4	-506.6	4,065.4	4,086.8	0.00	0.00	0.00
10,300.0	90.30	88.96	6,065.9	-504.7	4,165.4	4,186.6	0.00	0.00	0.00
10,400.0	90.30	88.96	6,065.4	-502.9	4,265.3	4,286.3	0.00	0.00	0.00
10,500.0	90.30	88.96	6,064.8	-501.1	4,365.3	4,386.1	0.00	0.00	0.00
10,600.0	90.30	88.96	6,064.3	-499.3	4,465.3	4,485.8	0.00	0.00	0.00
10,700.0	90.30	88.96	6,063.8	-497.5	4,565.3	4,585.5	0.00	0.00	0.00
10,800.0	90.30	88.96	6,063.3	-495.6	4,665.3	4,685.3	0.00	0.00	0.00
10,900.0	90.30	88.96	6,062.8	-493.8	4,765.2	4,785.0	0.00	0.00	0.00
11,000.0	90.30	88.96	6,062.3	-492.0	4,865.2	4,884.7	0.00	0.00	0.00
11,100.0	90.30	88.96	6,061.7	-490.2	4,965.2	4,984.5	0.00	0.00	0.00
11,200.0	90.30	88.96	6,061.2	-488.4	5,065.2	5,084.2	0.00	0.00	0.00
11,300.0	90.30	88.96	6,060.7	-486.5	5,165.2	5,183.9	0.00	0.00	0.00
11,400.0	90.30	88.96	6,060.2	-484.7	5,265.2	5,283.7	0.00	0.00	0.00
11,500.0	90.30	88.96	6,059.7	-482.9	5,365.1	5,383.4	0.00	0.00	0.00
11,600.0	90.30	88.96	6,059.2	-481.1	5,465.1	5,483.2	0.00	0.00	0.00
11,700.0	90.30	88.96	6,058.6	-479.3	5,565.1	5,582.9	0.00	0.00	0.00
11,800.0	90.30	88.96	6,058.1	-477.4	5,665.1	5,682.6	0.00	0.00	0.00
11,900.0	90.30	88.96	6,057.6	-475.6	5,765.1	5,782.4	0.00	0.00	0.00
12,000.0	90.30	88.96	6,057.1	-473.8	5,865.0	5,882.1	0.00	0.00	0.00
12,100.0	90.30	88.96	6,056.6	-472.0	5,965.0	5,981.8	0.00	0.00	0.00
12,200.0	90.30	88.96	6,056.1	-470.1	6,065.0	6,081.6	0.00	0.00	0.00
12,300.0	90.30	88.96	6,055.5	-468.3	6,165.0	6,181.3	0.00	0.00	0.00
12,400.0	90.30	88.96	6,055.0	-466.5	6,265.0	6,281.0	0.00	0.00	0.00
12,500.0	90.30	88.96	6,054.5	-464.7	6,365.0	6,380.8	0.00	0.00	0.00
12,600.0	90.30	88.96	6,054.0	-462.9	6,464.9	6,480.5	0.00	0.00	0.00
12,700.0	90.30	88.96	6,053.5	-461.0	6,564.9	6,580.3	0.00	0.00	0.00
12,800.0	90.30	88.96	6,053.0	-459.2	6,664.9	6,680.0	0.00	0.00	0.00
12,900.0	90.30	88.96	6,052.4	-457.4	6,764.9	6,779.7	0.00	0.00	0.00
13,000.0	90.30	88.96	6,051.9	-455.6	6,864.9	6,879.5	0.00	0.00	0.00
13,100.0	90.30	88.96	6,051.4	-453.8	6,964.8	6,979.2	0.00	0.00	0.00
13,200.0	90.30	88.96	6,050.9	-451.9	7,064.8	7,078.9	0.00	0.00	0.00
13,300.0	90.30	88.96	6,050.4	-450.1	7,164.8	7,178.7	0.00	0.00	0.00
13,400.0	90.30	88.96	6,049.9	-448.3	7,264.8	7,278.4	0.00	0.00	0.00
13,500.0	90.30	88.96	6,049.3	-446.5	7,364.8	7,378.2	0.00	0.00	0.00
13,600.0	90.30	88.96	6,048.8	-444.7	7,464.8	7,477.9	0.00	0.00	0.00
13,700.0	90.30	88.96	6,048.3	-442.8	7,564.7	7,577.6	0.00	0.00	0.00
13,800.0	90.30	88.96	6,047.8	-441.0	7,664.7	7,677.4	0.00	0.00	0.00
13,900.0	90.30	88.96	6,047.3	-439.2	7,764.7	7,777.1	0.00	0.00	0.00
14,000.0	90.30	88.96	6,046.8	-437.4	7,864.7	7,876.8	0.00	0.00	0.00
14,100.0	90.30	88.96	6,046.2	-435.6	7,964.7	7,976.6	0.00	0.00	0.00
14,147.0	90.30	88.96	6,046.0	-434.7	8,011.6	8,023.4	0.00	0.00	0.00
AS 2-3228BH2 PBHL									

# Bill Barrett Corp

## Planning Report

<b>Database:</b>	Compass	<b>Local Co-ordinate Reference:</b>	Well ANSCHUTZ STATE 4-62-2-3228BH2
<b>Company:</b>	BILL BARRETT CORP	<b>TVD Reference:</b>	KB @ 4566.0ft (Original Well Elev)
<b>Project:</b>	WELD COUNTY, COLORADO	<b>MD Reference:</b>	KB @ 4566.0ft (Original Well Elev)
<b>Site:</b>	Anschutz State 4-62-2 Pad	<b>North Reference:</b>	True
<b>Well:</b>	ANSCHUTZ STATE 4-62-2-3228BH2	<b>Survey Calculation Method:</b>	Minimum Curvature
<b>Wellbore:</b>	Wellbore #1		
<b>Design:</b>	Design #1		

Casing Points					
Measured Depth (ft)	Vertical Depth (ft)	Name	Casing Diameter (")	Hole Diameter (")	
6,410.0	6,086.0	7" Csg	7	8-3/4	

Formations						
Measured Depth (ft)	Vertical Depth (ft)	Name	Lithology	Dip (°)	Dip Direction (°)	
	0.0	FOX HILLS BASE		-0.30	88.96	
5,029.0	4,982.0	SHANNON		-0.30	88.96	
5,916.5	5,856.0	SHARON SPRINGS		-0.30	88.96	
6,045.1	5,956.0	NIOBRARA		-0.30	88.96	
6,261.2	6,065.0	TOP B2 TARGET		-0.30	88.96	
	6,110.0	BASE B2 TARGET		-0.30	88.96	