

BILL BARRETT CORP

WELD COUNTY, COLORADO

Anschutz State 4-62-2 Pad

ANSCHUTZ STATE 4-62-2-1721CH2

Wellbore #1

Plan: Design #1

Standard Planning Report

13 January, 2014



Bill Barrett Corporation

COMPANY DETAILS: BILL BARRETT CORP

Calculation Method: Minimum Curvature
Error System: ISCWSA
Scan Method: Closest Approach 3D
Error Surface: Elliptical Conic
Warning Method: Error Ratio

REFERENCE INFORMATION

Co-ordinate (N/E) Reference: Well ANSCHUTZ STATE 4-62-2-1721CH2, True North
Vertical (TVD) Reference: KB @ 4566.0ft (Original Well Elev)
Section (VS) Reference: Slot - (0.0N, 0.0E)
Measured Depth Reference: KB @ 4566.0ft (Original Well Elev)
Calculation Method: Minimum Curvature

WELL DETAILS: ANSCHUTZ STATE 4-62-2-1721CH2

+N/-S	+E/-W	Northing	Easting	Latitude	Longitude
0.0	0.0	1370671.61	3333997.13	40° 20' 40.920 N	104° 18' 6.170 W

SECTION DETAILS

Sec	MD	Inc	Azi	TVD	+N/-S	+E/-W	DLeg	TFace	VSec	Target
1	0.0	0.00	0.00	0.0	0.0	0.0	0.00	0.00	0.0	
2	1000.0	0.00	0.00	1000.0	0.0	0.0	0.00	0.00	0.0	
3	1262.2	5.24	214.41	1261.9	-9.9	-6.8	2.00	214.41	-6.6	
4	5182.4	5.24	214.41	5165.7	-305.5	-209.3	0.00	0.00	-203.2	
5	5444.7	0.00	88.96	5427.5	-315.4	-216.1	2.00	180.00	-209.8	
6	5694.7	0.00	88.96	5677.5	-315.4	-216.1	0.00	88.96	-209.8	
7	6446.8	90.25	88.96	6155.0	-306.7	263.4	12.00	88.96	269.4	AS 2-1721CH2 LP
8	14387.5	90.25	88.96	6120.0	-162.6	8202.8	0.00	0.00	8204.4	AS 2-1721CH2 PBHL

PROJECT DETAILS: WELD COUNTY, COLORADO

Geodetic System: US State Plane 1983
Datum: North American Datum 1983
Ellipsoid: GRS 1980
Zone: Colorado Northern Zone

FORMATION TOP DETAILS

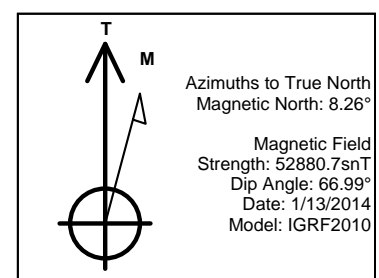
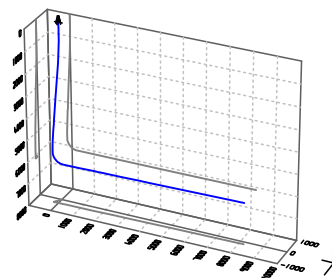
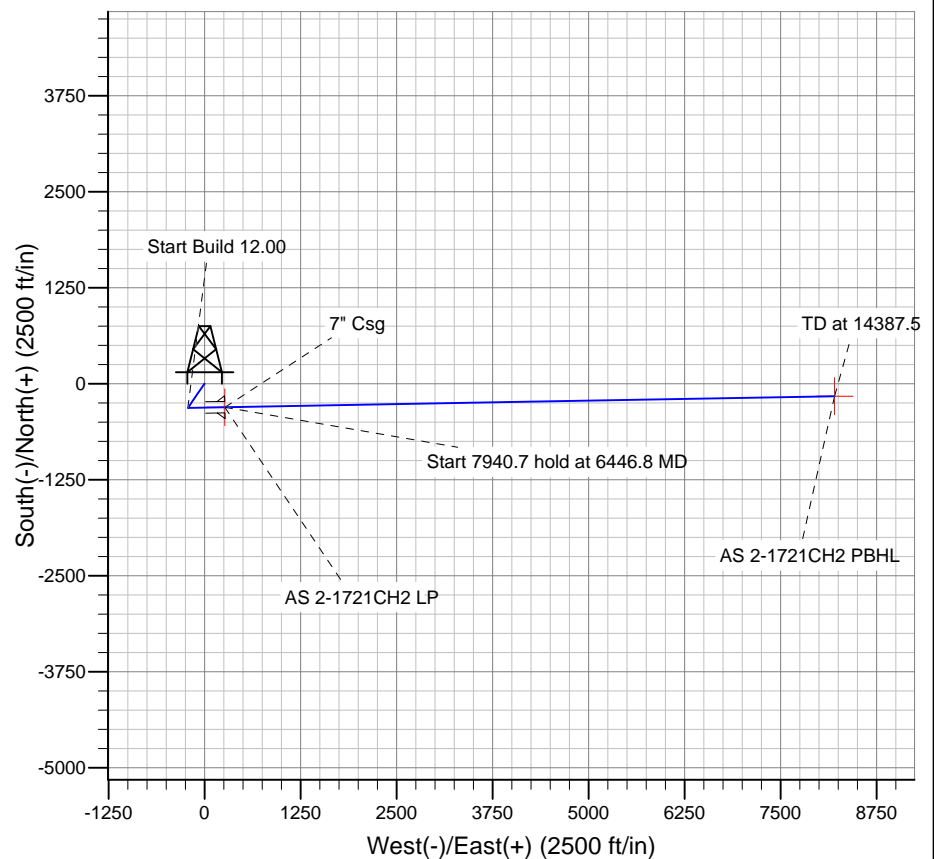
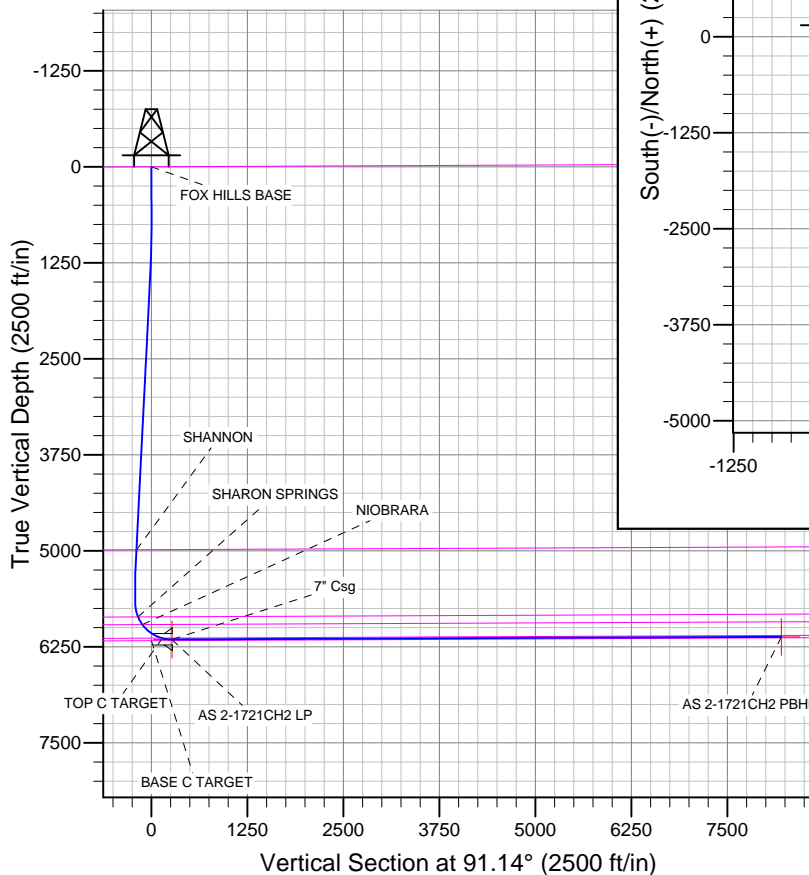
TVDPath	MDPath	Formation
		BASE C TARGET
		FOX HILLS BASE
4987.9	5003.9	SHANNON
5861.8	5883.9	SHARON SPRINGS
5961.6	5998.9	NIOBRARA
6138.4	6318.5	TOP C TARGET

WELLBORE TARGET DETAILS

Name	TVD	+N/-S	+E/-W	Shape
AS 2-1721CH2 PBHL	6120.0	-162.6	8202.8	Point
AS 2-1721CH2 LP	6155.0	-306.7	263.4	Point

CASING DETAILS

TVD	MD	Name	Size
6155.0	6450.0	7" Csg	7



Bill Barrett Corp

Planning Report

Database:	Compass	Local Co-ordinate Reference:	Well ANSCHUTZ STATE 4-62-2-1721CH2
Company:	BILL BARRETT CORP	TVD Reference:	KB @ 4566.0ft (Original Well Elev)
Project:	WELD COUNTY, COLORADO	MD Reference:	KB @ 4566.0ft (Original Well Elev)
Site:	Anschutz State 4-62-2 Pad	North Reference:	True
Well:	ANSCHUTZ STATE 4-62-2-1721CH2	Survey Calculation Method:	Minimum Curvature
Wellbore:	Wellbore #1		
Design:	Design #1		

Project	WELD COUNTY, COLORADO		
Map System:	US State Plane 1983	System Datum:	Mean Sea Level
Geo Datum:	North American Datum 1983		
Map Zone:	Colorado Northern Zone		

Site		Anschutz State 4-62-2 Pad			
Site Position:		Northing:	1,370,746.63ft	Latitude:	40° 20' 41.662 N
From:	Lat/Long	Easting:	3,333,993.88ft	Longitude:	104° 18' 6.199 W
Position Uncertainty:	0.0 ft	Slot Radius:	"	Grid Convergence:	0.77 °

Well		ANSCHUTZ STATE 4-62-2-1721CH2				
Well Position	+N-S	-75.1 ft	Northing:	1,370,671.61 ft	Latitude:	40° 20' 40.920 N
	+E-W	2.2 ft	Easting:	3,333,997.13 ft	Longitude:	104° 18' 6.170 W
Position Uncertainty		0.0 ft	Wellhead Elevation:	ft	Ground Level:	4,544.0 ft

Wellbore	Wellbore #1				
Magnetics	Model Name	Sample Date	Declination (°)	Dip Angle (°)	Field Strength (nT)
	IGRF2010	1/13/2014	8.26	66.99	52,881

Design	Design #1				
Audit Notes:					
Version:	Phase:	PLAN		Tie On Depth:	0.0
Vertical Section:	Depth From (TVD) (ft)	+N/-S (ft)	+E/-W (ft)	Direction (°)	
	0.0	0.0	0.0	91.14	

Plan Sections										
Measured Depth (ft)	Inclination (°)	Azimuth (°)	Vertical Depth (ft)	+N/-S (ft)	+E/-W (ft)	Dogleg Rate (°/100ft)	Build Rate (°/100ft)	Turn Rate (°/100ft)	TFO (°)	Target
0.0	0.00	0.00	0.0	0.0	0.0	0.00	0.00	0.00	0.00	
1,000.0	0.00	0.00	1,000.0	0.0	0.0	0.00	0.00	0.00	0.00	
1,262.2	5.24	214.41	1,261.9	-9.9	-6.8	2.00	2.00	0.00	214.41	
5,182.4	5.24	214.41	5,165.7	-305.5	-209.3	0.00	0.00	0.00	0.00	
5,444.7	0.00	88.96	5,427.5	-315.4	-216.1	2.00	-2.00	0.00	180.00	
5,694.7	0.00	88.96	5,677.5	-315.4	-216.1	0.00	0.00	0.00	88.96	
6,446.8	90.25	88.96	6,155.0	-306.7	263.4	12.00	12.00	0.00	88.96	AS 2-1721CH2 LP
14,387.5	90.25	88.96	6,120.0	-162.6	8,202.8	0.00	0.00	0.00	0.00	AS 2-1721CH2 PB

Bill Barrett Corp

Planning Report

Database:	Compass	Local Co-ordinate Reference:	Well ANSCHUTZ STATE 4-62-2-1721CH2
Company:	BILL BARRETT CORP	TVD Reference:	KB @ 4566.0ft (Original Well Elev)
Project:	WELD COUNTY, COLORADO	MD Reference:	KB @ 4566.0ft (Original Well Elev)
Site:	Anschutz State 4-62-2 Pad	North Reference:	True
Well:	ANSCHUTZ STATE 4-62-2-1721CH2	Survey Calculation Method:	Minimum Curvature
Wellbore:	Wellbore #1		
Design:	Design #1		

Planned Survey									
Measured Depth (ft)	Inclination (°)	Azimuth (°)	Vertical Depth (ft)	+N/-S (ft)	+E/-W (ft)	Vertical Section (ft)	Dogleg Rate (°/100ft)	Build Rate (°/100ft)	Turn Rate (°/100ft)
0.0	0.00	0.00	0.0	0.0	0.0	0.0	0.00	0.00	0.00
100.0	0.00	0.00	100.0	0.0	0.0	0.0	0.00	0.00	0.00
200.0	0.00	0.00	200.0	0.0	0.0	0.0	0.00	0.00	0.00
300.0	0.00	0.00	300.0	0.0	0.0	0.0	0.00	0.00	0.00
400.0	0.00	0.00	400.0	0.0	0.0	0.0	0.00	0.00	0.00
500.0	0.00	0.00	500.0	0.0	0.0	0.0	0.00	0.00	0.00
600.0	0.00	0.00	600.0	0.0	0.0	0.0	0.00	0.00	0.00
700.0	0.00	0.00	700.0	0.0	0.0	0.0	0.00	0.00	0.00
800.0	0.00	0.00	800.0	0.0	0.0	0.0	0.00	0.00	0.00
900.0	0.00	0.00	900.0	0.0	0.0	0.0	0.00	0.00	0.00
1,000.0	0.00	0.00	1,000.0	0.0	0.0	0.0	0.00	0.00	0.00
1,100.0	2.00	214.41	1,100.0	-1.4	-1.0	-1.0	2.00	2.00	0.00
1,200.0	4.00	214.41	1,199.8	-5.8	-3.9	-3.8	2.00	2.00	0.00
1,262.2	5.24	214.41	1,261.9	-9.9	-6.8	-6.6	2.00	2.00	0.00
1,300.0	5.24	214.41	1,299.5	-12.7	-8.7	-8.5	0.00	0.00	0.00
1,400.0	5.24	214.41	1,399.1	-20.3	-13.9	-13.5	0.00	0.00	0.00
1,500.0	5.24	214.41	1,498.6	-27.8	-19.1	-18.5	0.00	0.00	0.00
1,600.0	5.24	214.41	1,598.2	-35.4	-24.2	-23.5	0.00	0.00	0.00
1,700.0	5.24	214.41	1,697.8	-42.9	-29.4	-28.5	0.00	0.00	0.00
1,800.0	5.24	214.41	1,797.4	-50.5	-34.6	-33.6	0.00	0.00	0.00
1,900.0	5.24	214.41	1,897.0	-58.0	-39.7	-38.6	0.00	0.00	0.00
2,000.0	5.24	214.41	1,996.5	-65.5	-44.9	-43.6	0.00	0.00	0.00
2,100.0	5.24	214.41	2,096.1	-73.1	-50.1	-48.6	0.00	0.00	0.00
2,200.0	5.24	214.41	2,195.7	-80.6	-55.2	-53.6	0.00	0.00	0.00
2,300.0	5.24	214.41	2,295.3	-88.2	-60.4	-58.6	0.00	0.00	0.00
2,400.0	5.24	214.41	2,394.9	-95.7	-65.6	-63.6	0.00	0.00	0.00
2,500.0	5.24	214.41	2,494.5	-103.2	-70.7	-68.7	0.00	0.00	0.00
2,600.0	5.24	214.41	2,594.0	-110.8	-75.9	-73.7	0.00	0.00	0.00
2,700.0	5.24	214.41	2,693.6	-118.3	-81.1	-78.7	0.00	0.00	0.00
2,800.0	5.24	214.41	2,793.2	-125.9	-86.2	-83.7	0.00	0.00	0.00
2,900.0	5.24	214.41	2,892.8	-133.4	-91.4	-88.7	0.00	0.00	0.00
3,000.0	5.24	214.41	2,992.4	-140.9	-96.6	-93.7	0.00	0.00	0.00
3,100.0	5.24	214.41	3,091.9	-148.5	-101.7	-98.8	0.00	0.00	0.00
3,200.0	5.24	214.41	3,191.5	-156.0	-106.9	-103.8	0.00	0.00	0.00
3,300.0	5.24	214.41	3,291.1	-163.6	-112.1	-108.8	0.00	0.00	0.00
3,400.0	5.24	214.41	3,390.7	-171.1	-117.2	-113.8	0.00	0.00	0.00
3,500.0	5.24	214.41	3,490.3	-178.7	-122.4	-118.8	0.00	0.00	0.00
3,600.0	5.24	214.41	3,589.8	-186.2	-127.6	-123.8	0.00	0.00	0.00
3,700.0	5.24	214.41	3,689.4	-193.7	-132.7	-128.9	0.00	0.00	0.00
3,800.0	5.24	214.41	3,789.0	-201.3	-137.9	-133.9	0.00	0.00	0.00
3,900.0	5.24	214.41	3,888.6	-208.8	-143.0	-138.9	0.00	0.00	0.00
4,000.0	5.24	214.41	3,988.2	-216.4	-148.2	-143.9	0.00	0.00	0.00
4,100.0	5.24	214.41	4,087.8	-223.9	-153.4	-148.9	0.00	0.00	0.00
4,200.0	5.24	214.41	4,187.3	-231.4	-158.5	-153.9	0.00	0.00	0.00
4,300.0	5.24	214.41	4,286.9	-239.0	-163.7	-158.9	0.00	0.00	0.00
4,400.0	5.24	214.41	4,386.5	-246.5	-168.9	-164.0	0.00	0.00	0.00
4,500.0	5.24	214.41	4,486.1	-254.1	-174.0	-169.0	0.00	0.00	0.00
4,600.0	5.24	214.41	4,585.7	-261.6	-179.2	-174.0	0.00	0.00	0.00
4,700.0	5.24	214.41	4,685.2	-269.2	-184.4	-179.0	0.00	0.00	0.00
4,800.0	5.24	214.41	4,784.8	-276.7	-189.5	-184.0	0.00	0.00	0.00
4,900.0	5.24	214.41	4,884.4	-284.2	-194.7	-189.0	0.00	0.00	0.00
5,000.0	5.24	214.41	4,984.0	-291.8	-199.9	-194.1	0.00	0.00	0.00
5,003.9	5.24	214.41	4,987.9	-292.1	-200.1	-194.3	0.00	0.00	0.00
SHANNON									

Bill Barrett Corp

Planning Report

Database:	Compass	Local Co-ordinate Reference:	Well ANSCHUTZ STATE 4-62-2-1721CH2
Company:	BILL BARRETT CORP	TVD Reference:	KB @ 4566.0ft (Original Well Elev)
Project:	WELD COUNTY, COLORADO	MD Reference:	KB @ 4566.0ft (Original Well Elev)
Site:	Anschutz State 4-62-2 Pad	North Reference:	True
Well:	ANSCHUTZ STATE 4-62-2-1721CH2	Survey Calculation Method:	Minimum Curvature
Wellbore:	Wellbore #1		
Design:	Design #1		

Planned Survey									
Measured Depth (ft)	Inclination (°)	Azimuth (°)	Vertical Depth (ft)	+N/-S (ft)	+E/-W (ft)	Vertical Section (ft)	Dogleg Rate (°/100ft)	Build Rate (°/100ft)	Turn Rate (°/100ft)
5,100.0	5.24	214.41	5,083.6	-299.3	-205.0	-199.1	0.00	0.00	0.00
5,182.4	5.24	214.41	5,165.7	-305.5	-209.3	-203.2	0.00	0.00	0.00
5,200.0	4.89	214.41	5,183.2	-306.8	-210.2	-204.1	2.00	-2.00	0.00
5,300.0	2.89	214.41	5,282.9	-312.4	-214.0	-207.8	2.00	-2.00	0.00
5,400.0	0.89	214.41	5,382.9	-315.1	-215.9	-209.6	2.00	-2.00	0.00
5,444.7	0.00	88.96	5,427.5	-315.4	-216.1	-209.8	2.00	-2.00	0.00
5,500.0	0.00	88.96	5,482.9	-315.4	-216.1	-209.8	0.00	0.00	0.00
5,600.0	0.00	88.96	5,582.9	-315.4	-216.1	-209.8	0.00	0.00	0.00
5,694.7	0.00	88.96	5,677.5	-315.4	-216.1	-209.8	0.00	0.00	0.00
5,700.0	0.64	88.96	5,682.9	-315.4	-216.1	-209.8	12.00	12.00	0.00
5,800.0	12.64	88.96	5,782.0	-315.2	-204.5	-198.2	12.00	12.00	0.00
5,883.9	22.70	88.96	5,861.8	-314.8	-179.1	-172.8	12.00	12.00	0.00
SHARON SPRINGS									
5,900.0	24.64	88.96	5,876.6	-314.6	-172.6	-166.4	12.00	12.00	0.00
5,998.9	36.50	88.96	5,961.6	-313.7	-122.4	-116.2	12.00	12.00	0.00
NIOBRARA									
6,000.0	36.64	88.96	5,962.5	-313.7	-121.8	-115.5	12.00	12.00	0.00
6,100.0	48.64	88.96	6,035.9	-312.5	-54.2	-48.0	12.00	12.00	0.00
6,200.0	60.64	88.96	6,093.7	-311.0	27.2	33.4	12.00	12.00	0.00
6,300.0	72.64	88.96	6,133.2	-309.4	118.8	125.0	12.00	12.00	0.00
6,318.5	74.86	88.96	6,138.4	-309.0	136.6	142.7	12.00	12.00	0.00
TOP C TARGET									
6,400.0	84.64	88.96	6,152.9	-307.6	216.7	222.7	12.00	12.00	0.00
6,446.8	90.25	88.96	6,155.0	-306.7	263.4	269.4	12.00	12.00	0.00
AS 2-1721CH2 LP									
6,450.0	90.25	88.96	6,155.0	-306.7	266.6	272.6	0.00	0.00	0.00
7" Csg									
6,500.0	90.25	88.96	6,154.8	-305.8	316.6	322.6	0.00	0.00	0.00
6,600.0	90.25	88.96	6,154.3	-303.9	416.6	422.5	0.00	0.00	0.00
6,700.0	90.25	88.96	6,153.9	-302.1	516.6	522.5	0.00	0.00	0.00
6,800.0	90.25	88.96	6,153.4	-300.3	616.6	622.4	0.00	0.00	0.00
6,900.0	90.25	88.96	6,153.0	-298.5	716.5	722.3	0.00	0.00	0.00
7,000.0	90.25	88.96	6,152.6	-296.7	816.5	822.2	0.00	0.00	0.00
7,100.0	90.25	88.96	6,152.1	-294.9	916.5	922.2	0.00	0.00	0.00
7,200.0	90.25	88.96	6,151.7	-293.1	1,016.5	1,022.1	0.00	0.00	0.00
7,300.0	90.25	88.96	6,151.2	-291.2	1,116.5	1,122.0	0.00	0.00	0.00
7,400.0	90.25	88.96	6,150.8	-289.4	1,216.5	1,221.9	0.00	0.00	0.00
7,500.0	90.25	88.96	6,150.4	-287.6	1,316.4	1,321.9	0.00	0.00	0.00
7,600.0	90.25	88.96	6,149.9	-285.8	1,416.4	1,421.8	0.00	0.00	0.00
7,700.0	90.25	88.96	6,149.5	-284.0	1,516.4	1,521.7	0.00	0.00	0.00
7,800.0	90.25	88.96	6,149.0	-282.2	1,616.4	1,621.7	0.00	0.00	0.00
7,900.0	90.25	88.96	6,148.6	-280.3	1,716.4	1,721.6	0.00	0.00	0.00
8,000.0	90.25	88.96	6,148.2	-278.5	1,816.3	1,821.5	0.00	0.00	0.00
8,100.0	90.25	88.96	6,147.7	-276.7	1,916.3	1,921.4	0.00	0.00	0.00
8,200.0	90.25	88.96	6,147.3	-274.9	2,016.3	2,021.4	0.00	0.00	0.00
8,300.0	90.25	88.96	6,146.8	-273.1	2,116.3	2,121.3	0.00	0.00	0.00
8,400.0	90.25	88.96	6,146.4	-271.3	2,216.3	2,221.2	0.00	0.00	0.00
8,500.0	90.25	88.96	6,146.0	-269.4	2,316.3	2,321.1	0.00	0.00	0.00
8,600.0	90.25	88.96	6,145.5	-267.6	2,416.2	2,421.1	0.00	0.00	0.00
8,700.0	90.25	88.96	6,145.1	-265.8	2,516.2	2,521.0	0.00	0.00	0.00
8,800.0	90.25	88.96	6,144.6	-264.0	2,616.2	2,620.9	0.00	0.00	0.00
8,900.0	90.25	88.96	6,144.2	-262.2	2,716.2	2,720.9	0.00	0.00	0.00
9,000.0	90.25	88.96	6,143.7	-260.4	2,816.2	2,820.8	0.00	0.00	0.00

Bill Barrett Corp

Planning Report

Database:	Compass	Local Co-ordinate Reference:	Well ANSCHUTZ STATE 4-62-2-1721CH2
Company:	BILL BARRETT CORP	TVD Reference:	KB @ 4566.0ft (Original Well Elev)
Project:	WELD COUNTY, COLORADO	MD Reference:	KB @ 4566.0ft (Original Well Elev)
Site:	Anschutz State 4-62-2 Pad	North Reference:	True
Well:	ANSCHUTZ STATE 4-62-2-1721CH2	Survey Calculation Method:	Minimum Curvature
Wellbore:	Wellbore #1		
Design:	Design #1		

Planned Survey									
Measured Depth (ft)	Inclination (°)	Azimuth (°)	Vertical Depth (ft)	+N/-S (ft)	+E/-W (ft)	Vertical Section (ft)	Dogleg Rate (°/100ft)	Build Rate (°/100ft)	Turn Rate (°/100ft)
9,100.0	90.25	88.96	6,143.3	-258.6	2,916.2	2,920.7	0.00	0.00	0.00
9,200.0	90.25	88.96	6,142.9	-256.7	3,016.1	3,020.6	0.00	0.00	0.00
9,300.0	90.25	88.96	6,142.4	-254.9	3,116.1	3,120.6	0.00	0.00	0.00
9,400.0	90.25	88.96	6,142.0	-253.1	3,216.1	3,220.5	0.00	0.00	0.00
9,500.0	90.25	88.96	6,141.5	-251.3	3,316.1	3,320.4	0.00	0.00	0.00
9,600.0	90.25	88.96	6,141.1	-249.5	3,416.1	3,420.3	0.00	0.00	0.00
9,700.0	90.25	88.96	6,140.7	-247.7	3,516.1	3,520.3	0.00	0.00	0.00
9,800.0	90.25	88.96	6,140.2	-245.8	3,616.0	3,620.2	0.00	0.00	0.00
9,900.0	90.25	88.96	6,139.8	-244.0	3,716.0	3,720.1	0.00	0.00	0.00
10,000.0	90.25	88.96	6,139.3	-242.2	3,816.0	3,820.1	0.00	0.00	0.00
10,100.0	90.25	88.96	6,138.9	-240.4	3,916.0	3,920.0	0.00	0.00	0.00
10,200.0	90.25	88.96	6,138.5	-238.6	4,016.0	4,019.9	0.00	0.00	0.00
10,300.0	90.25	88.96	6,138.0	-236.8	4,115.9	4,119.8	0.00	0.00	0.00
10,400.0	90.25	88.96	6,137.6	-235.0	4,215.9	4,219.8	0.00	0.00	0.00
10,500.0	90.25	88.96	6,137.1	-233.1	4,315.9	4,319.7	0.00	0.00	0.00
10,600.0	90.25	88.96	6,136.7	-231.3	4,415.9	4,419.6	0.00	0.00	0.00
10,700.0	90.25	88.96	6,136.3	-229.5	4,515.9	4,519.5	0.00	0.00	0.00
10,800.0	90.25	88.96	6,135.8	-227.7	4,615.9	4,619.5	0.00	0.00	0.00
10,900.0	90.25	88.96	6,135.4	-225.9	4,715.8	4,719.4	0.00	0.00	0.00
11,000.0	90.25	88.96	6,134.9	-224.1	4,815.8	4,819.3	0.00	0.00	0.00
11,100.0	90.25	88.96	6,134.5	-222.2	4,915.8	4,919.2	0.00	0.00	0.00
11,200.0	90.25	88.96	6,134.0	-220.4	5,015.8	5,019.2	0.00	0.00	0.00
11,300.0	90.25	88.96	6,133.6	-218.6	5,115.8	5,119.1	0.00	0.00	0.00
11,400.0	90.25	88.96	6,133.2	-216.8	5,215.8	5,219.0	0.00	0.00	0.00
11,500.0	90.25	88.96	6,132.7	-215.0	5,315.7	5,319.0	0.00	0.00	0.00
11,600.0	90.25	88.96	6,132.3	-213.2	5,415.7	5,418.9	0.00	0.00	0.00
11,700.0	90.25	88.96	6,131.8	-211.4	5,515.7	5,518.8	0.00	0.00	0.00
11,800.0	90.25	88.96	6,131.4	-209.5	5,615.7	5,618.7	0.00	0.00	0.00
11,900.0	90.25	88.96	6,131.0	-207.7	5,715.7	5,718.7	0.00	0.00	0.00
12,000.0	90.25	88.96	6,130.5	-205.9	5,815.7	5,818.6	0.00	0.00	0.00
12,100.0	90.25	88.96	6,130.1	-204.1	5,915.6	5,918.5	0.00	0.00	0.00
12,200.0	90.25	88.96	6,129.6	-202.3	6,015.6	6,018.4	0.00	0.00	0.00
12,300.0	90.25	88.96	6,129.2	-200.5	6,115.6	6,118.4	0.00	0.00	0.00
12,400.0	90.25	88.96	6,128.8	-198.6	6,215.6	6,218.3	0.00	0.00	0.00
12,500.0	90.25	88.96	6,128.3	-196.8	6,315.6	6,318.2	0.00	0.00	0.00
12,600.0	90.25	88.96	6,127.9	-195.0	6,415.5	6,418.2	0.00	0.00	0.00
12,700.0	90.25	88.96	6,127.4	-193.2	6,515.5	6,518.1	0.00	0.00	0.00
12,800.0	90.25	88.96	6,127.0	-191.4	6,615.5	6,618.0	0.00	0.00	0.00
12,900.0	90.25	88.96	6,126.6	-189.6	6,715.5	6,717.9	0.00	0.00	0.00
13,000.0	90.25	88.96	6,126.1	-187.8	6,815.5	6,817.9	0.00	0.00	0.00
13,100.0	90.25	88.96	6,125.7	-185.9	6,915.5	6,917.8	0.00	0.00	0.00
13,200.0	90.25	88.96	6,125.2	-184.1	7,015.4	7,017.7	0.00	0.00	0.00
13,300.0	90.25	88.96	6,124.8	-182.3	7,115.4	7,117.6	0.00	0.00	0.00
13,400.0	90.25	88.96	6,124.4	-180.5	7,215.4	7,217.6	0.00	0.00	0.00
13,500.0	90.25	88.96	6,123.9	-178.7	7,315.4	7,317.5	0.00	0.00	0.00
13,600.0	90.25	88.96	6,123.5	-176.9	7,415.4	7,417.4	0.00	0.00	0.00
13,700.0	90.25	88.96	6,123.0	-175.0	7,515.4	7,517.3	0.00	0.00	0.00
13,800.0	90.25	88.96	6,122.6	-173.2	7,615.3	7,617.3	0.00	0.00	0.00
13,900.0	90.25	88.96	6,122.1	-171.4	7,715.3	7,717.2	0.00	0.00	0.00
14,000.0	90.25	88.96	6,121.7	-169.6	7,815.3	7,817.1	0.00	0.00	0.00
14,100.0	90.25	88.96	6,121.3	-167.8	7,915.3	7,917.1	0.00	0.00	0.00
14,200.0	90.25	88.96	6,120.8	-166.0	8,015.3	8,017.0	0.00	0.00	0.00
14,300.0	90.25	88.96	6,120.4	-164.2	8,115.2	8,116.9	0.00	0.00	0.00
14,387.5	90.25	88.96	6,120.0	-162.6	8,202.8	8,204.4	0.00	0.00	0.00

Bill Barrett Corp

Planning Report

Database:	Compass	Local Co-ordinate Reference:	Well ANSCHUTZ STATE 4-62-2-1721CH2
Company:	BILL BARRETT CORP	TVD Reference:	KB @ 4566.0ft (Original Well Elev)
Project:	WELD COUNTY, COLORADO	MD Reference:	KB @ 4566.0ft (Original Well Elev)
Site:	Anschutz State 4-62-2 Pad	North Reference:	True
Well:	ANSCHUTZ STATE 4-62-2-1721CH2	Survey Calculation Method:	Minimum Curvature
Wellbore:	Wellbore #1		
Design:	Design #1		

Planned Survey

Measured Depth (ft)	Inclination (°)	Azimuth (°)	Vertical Depth (ft)	+N/-S (ft)	+E/-W (ft)	Vertical Section (ft)	Dogleg Rate (°/100ft)	Build Rate (°/100ft)	Turn Rate (°/100ft)
AS 2-1721CH2 PBHL									

Casing Points

Measured Depth (ft)	Vertical Depth (ft)	Name	Casing Diameter (")	Hole Diameter (")
6,450.0	6,155.0	7" Csg	7	8-3/4

Formations

Measured Depth (ft)	Vertical Depth (ft)	Name	Lithology	Dip (°)	Dip Direction (°)
	0.0	FOX HILLS BASE		-0.25	88.96
5,003.9	4,987.0	SHANNON		-0.25	88.96
5,883.9	5,861.0	SHARON SPRINGS		-0.25	88.96
5,998.9	5,961.0	NIOBRARA		-0.25	88.96
6,318.5	6,139.0	TOP C TARGET		-0.25	88.96
	6,170.0	BASE C TARGET		-0.25	88.96