

T4N, R62W, 6th P.M.

BILL BARRETT CORPORATION

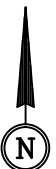
Well location, ANSCHUTZ STATE
#4-62-2-1721CH2, located as shown in the SW
1/4 NW 1/4 of Section 2, T4N, R62W, 6th P.M.,
Weld County, Colorado.

BASIS OF ELEVATION

SPOT ELEVATION LOCATED AT THE NORTHEAST CORNER OF
SECTION 24, T5N, R62W, 6th P.M. TAKEN FROM THE POINT
OF ROCKS, QUADRANGLE, COLORADO, WELD COUNTY, 7.5
MINUTE QUAD (TOPOGRAPHIC MAP) PUBLISHED BY THE UNITED
STATES DEPARTMENT OF THE INTERIOR, GEOLOGICAL SURVEY.
SAID ELEVATION IS MARKED AS BEING 4530 FEET.

BASIS OF BEARINGS

BASIS OF BEARINGS IS A G.P.S. OBSERVATION.



LINE TABLE

LINE	DIRECTION	LENGTH
L1	S40°34'58"E	403.61'

CERTIFICATE

THIS IS TO CERTIFY THAT THE ABOVE PLAT WAS PREPARED FROM
FIELD NOTES OF ACTUAL SURVEYS MADE BY ME OR UNDER MY
SUPERVISION AND THAT THE SAME ARE TRUE AND CORRECT TO THE
BEST OF MY KNOWLEDGE AND BELIEF.

REGISTERED LAND SURVEYOR
REGISTRATION NO. 28285
STATE OF COLORADO

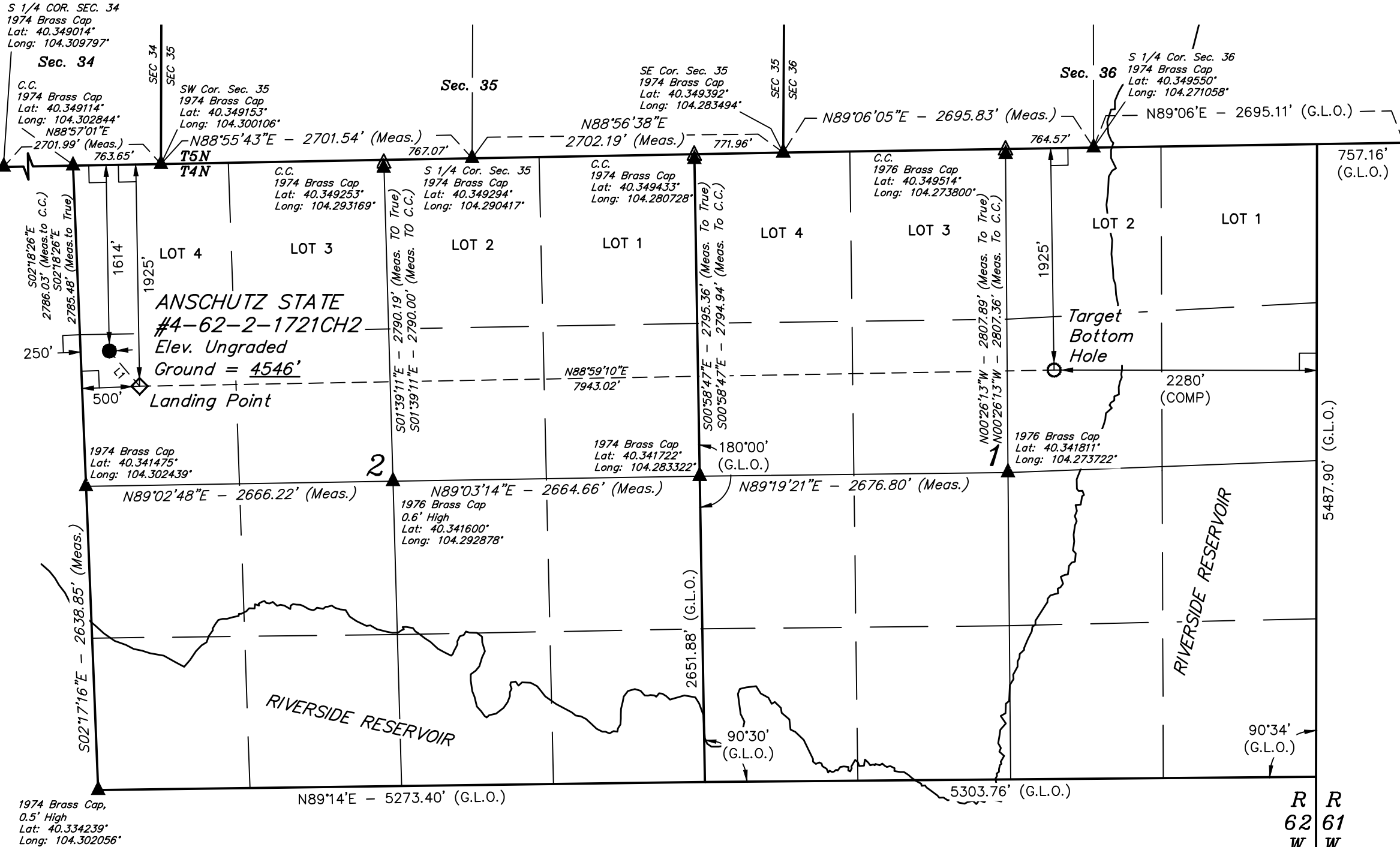
REVISED: 01-06-14

UINTAH ENGINEERING & LAND SURVEYING

85 SOUTH 200 EAST - VERNAL, UTAH 84078

(435) 789-1017

SCALE 1" = 1000'	DATE SURVEYED: 12-02-13	DATE DRAWN: 12-19-13
PARTY DALLAS NIELSEN G.W. J.W.	REFERENCES G.L.O. PLAT	
WEATHER COLD	FILE BILL BARRETT CORPORATION	



LEGEND:

- = 90° SYMBOL
- = PROPOSED WELL HEAD.
- ◇ = PROPOSED LANDING POINT.
- = PROPOSED TARGET BOTTOM HOLE.
- ▲ = SECTION CORNERS LOCATED.
- △ = SECTION CORNERS RE-ESTABLISHED. (Not Set on Ground.)

PDOP = 1.3

NAD 83 (TARGET BOTTOM HOLE)	NAD 83 (LANDING POINT)	NAD 83 (SURFACE LOCATION)
LATITUDE = 40°20'39.30" (40.344250)	LATITUDE = 40°20'37.89" (40.343858)	LATITUDE = 40°20'40.92" (40.344700)
LONGITUDE = 104°16'20.23" (104.272286)	LONGITUDE = 104°18'02.77" (104.300769)	LONGITUDE = 104°18'06.17" (104.301714)
NAD 27 (TARGET BOTTOM HOLE)	NAD 27 (LANDING POINT)	NAD 27 (SURFACE LOCATION)
LATITUDE = 40°20'39.37" (40.344269)	LATITUDE = 40°20'37.96" (40.343878)	LATITUDE = 40°20'41.00" (40.344722)
LONGITUDE = 104°16'18.41" (104.271781)	LONGITUDE = 104°18'00.95" (104.300264)	LONGITUDE = 104°18'04.34" (104.301206)
STATE PLANE NAD 83	STATE PLANE NAD 83	STATE PLANE NAD 83
N: 1370620.45 E: 3342201.25	N: 1370369.08 E: 3334264.29	N: 1370671.83 E: 3333997.54
STATE PLANE NAD 27	STATE PLANE NAD 27	STATE PLANE NAD 27
N: 370622.59 E: 2342351.38	N: 370371.20 E: 2334414.41	N: 370673.94 E: 2334147.65