

WPX Energy Rocky Mtn LLC

RWF 331-4

API #05-045-22090-00

430' FNL x 1690' FEL - (NWNE) - SHL

985' FNL x 2459' FWL - (NENW) - BHL

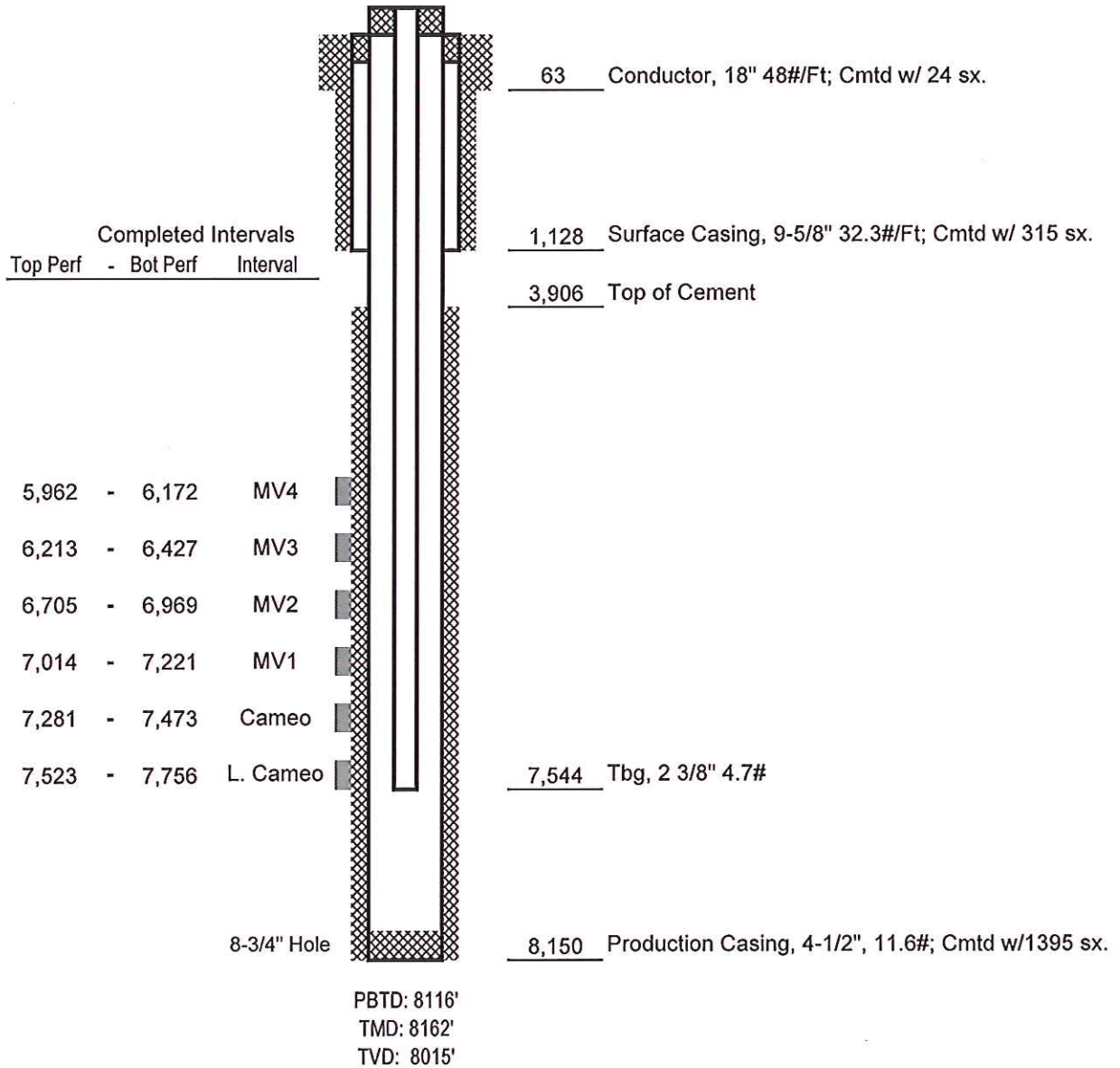
Sec. 4-T7S-R94W

Garfield County, Colorado

Rulison Prospect

FINAL

DATED 01-27-14



Not to Scale