

The Road to Excellence Starts with Safety

Sold To #: 300721	Ship To #: 3123639	Quote #:	Sales Order #: 900872924
Customer: WPX ENERGY ROCKY MOUNTAIN LLC-EBUS	Customer Rep: Vallad, Gary		
Well Name: RWF	Well #: 331-4	API/UWI #: 05-045-22090	
Field: RULISON	City (SAP): RIFLE	County/Parish: Garfield	State: Colorado
Lat: N 39.473 deg. OR N 39 deg. 28 min. 23.851 secs.	Long: W 107.889 deg. OR W -108 deg. 6 min. 39.665 secs.		
Contractor: NABORS 574	Rig/Platform Name/Num: NABORS 574		
Job Purpose: Cement Surface Casing			
Well Type: Development Well	Job Type: Cement Surface Casing		
Sales Person: MAYO, MARK	Srv Supervisor: PONDER, THOMAS	MBU ID Emp #: 427112	

Job Personnel

HES Emp Name	Exp Hrs	Emp #	HES Emp Name	Exp Hrs	Emp #	HES Emp Name	Exp Hrs	Emp #
BRENNECKE, ANDREW Bailey	6	486345	BROWN, JUSTIN Michael	6	549296	PONDER, THOMAS Lynn	6	427112
SCHANZ, ANDREW Jacob	6	544399	SINCLAIR, DAN J	6	338784			

Equipment

HES Unit #	Distance-1 way	HES Unit #	Distance-1 way	HES Unit #	Distance-1 way	HES Unit #	Distance-1 way
10567589C	60 mile	10867531	60 mile	10989685	60 mile	11259884	60 mile
11808829	60 mile	12037685	60 mile				

Job Hours

Date	On Location Hours	Operating Hours	Date	On Location Hours	Operating Hours	Date	On Location Hours	Operating Hours
11/03/2013	6	3						

TOTAL Total is the sum of each column separately

Job				Job Times			
Formation Name	Formation Depth (MD)	Top	Bottom	Called Out	Date	Time	Time Zone
Form Type			BHST	On Location	03 - Nov - 2013	12:00	MST
Job depth MD	1128. ft		Job Depth TVD	Job Started	03 - Nov - 2013	15:53	MST
Water Depth			Wk Ht Above Floor	Job Completed	03 - Nov - 2013	16:57	MST
Perforation Depth (MD)	From		To	Departed Loc	03 - Nov - 2013	18:00	MST

Well Data

Description	New / Used	Max pressure psig	Size in	ID in	Weight lbm/ft	Thread	Grade	Top MD ft	Bottom MD ft	Top TVD ft	Bottom TVD ft
-------------	------------	-------------------	---------	-------	---------------	--------	-------	-----------	--------------	------------	---------------

Tools and Accessories

Type	Size	Qty	Make	Depth	Type	Size	Qty	Make	Depth	Type	Size	Qty	Make
Guide Shoe	9 5/8	1	WTF	1128	Packer					Top Plug	9 5/8	1	HES
Float Shoe					Bridge Plug					Bottom Plug			
Float Collar	9 5/8	1	WTF	1081.6	Retainer					SSR plug set			
Insert Float										Plug Container	9 5/8	1	HES
Stage Tool										Centralizers			

Miscellaneous Materials

Gelling Agt	Conc	Surfactant	Conc	Acid Type	Qty	Conc	%
Treatment Fld	Conc	Inhibitor	Conc	Sand Type	Size	Qty	

Fluid Data

Stage/Plug #: 1										
Fluid #	Stage Type	Fluid Name	Qty	Qty uom	Mixing Density lbm/gal	Yield ft3/sk	Mix Fluid Gal/sk	Rate bbl/min	Total Mix Fluid Gal/sk	

Stage/Plug #: 1										
Fluid #	Stage Type	Fluid Name	Qty	Qty uom	Mixing Density lbm/gal	Yield ft3/sk	Mix Fluid Gal/sk	Rate bbl/min	Total Mix Fluid Gal/sk	

HALLIBURTON**Cementing Job Summary**

Stage/Plug #: 1									
1	Fresh Water Spacer		20.00	bbl	8.34	.0	.0	4.0	
2	VersaCem GJ1 Lead Cement	VARICEM (TM) CEMENT (452009)	155.0	sacks	12.3	2.38	13.75	7.0	13.75
	13.75 Gal	FRESH WATER							
3	VersaCem GJ1 Tail Cement	VARICEM (TM) CEMENT (452009)	160.0	sacks	12.8	2.11	11.75	7.0	11.75
	11.75 Gal	FRESH WATER							
4	Fresh Water Displacement		80.00	bbl	8.34	.0	.0	10.0	
Calculated Values		Pressures		Volumes					
Displacement	85.1	Shut In: Instant		Lost Returns		Cement Slurry	125.8	Pad	
Top Of Cement	SURFACE	5 Min		Cement Returns	35	Actual Displacement	80.1	Treatment	
Frac Gradient		15 Min		Spacers	20	Load and Breakdown		Total Job	225.8
Rates									
Circulating	RIG	Mixing	7	Displacement	10	Avg. Job	7		
Cement Left In Pipe	Amount	0 ft	Reason	Shoe Joint					
Frac Ring # 1 @	ID	Frac ring # 2 @	ID	Frac Ring # 3 @	ID	Frac Ring # 4 @	ID		
The Information Stated Herein Is Correct				Customer Representative Signature					

The Road to Excellence Starts with Safety

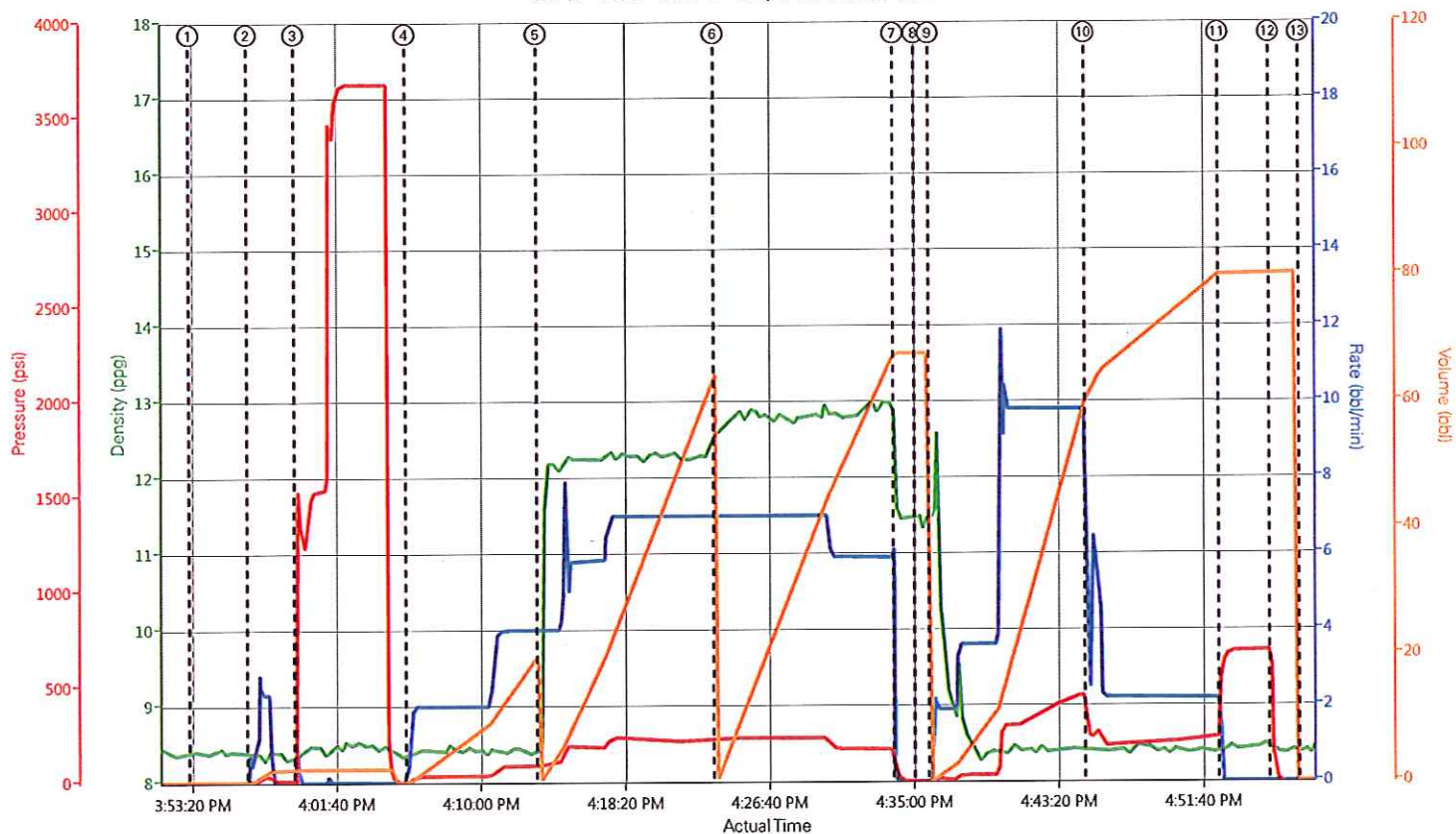
Sold To #: 300721	Ship To #: 3123639	Quote #:	Sales Order #: 900872924
Customer: WPX ENERGY ROCKY MOUNTAIN LLC-EBUS		Customer Rep: Vallad, Gary	
Well Name: RWF	Well #: 331-4	API/UWI #: 05-045-22090	
Field: RULISON	City (SAP): RIFLE	County/Parish: Garfield	State: Colorado
Legal Description:			
Lat: N 39.473 deg. OR N 39 deg. 28 min. 23.851 secs.		Long: W 107.889 deg. OR W -108 deg. 6 min. 39.665 secs.	
Contractor: NABORS 574		Rig/Platform Name/Num: NABORS 574	
Job Purpose: Cement Surface Casing			Ticket Amount:
Well Type: Development Well		Job Type: Cement Surface Casing	
Sales Person: MAYO, MARK		Srvc Supervisor: PONDER, THOMAS	MBU ID Emp #: 427112

Activity Description	Date/Time	Cht #	Rate bbl/min	Volume bbl		Pressure psig		Comments
				Stage	Total	Tubing	Casing	
Call Out	11/03/2013 07:30							
Crew Leave Yard	11/03/2013 10:00							ALL HES PRESENT FOR PRE-CONVOY SAFETY HUDDLE
Arrive At Loc	11/03/2013 12:00							RIG WAS STILL PULLING DRILL PIPE WHEN THE CREW ARRIVED ON LOCATION
Assessment Of Location Safety Meeting	11/03/2013 14:15							TD- 1142', TP- 1128', SJ- 46.4', MUD- 10.2 PPG, HOLE- 13 1/2", SURFACE CASING- 9 5/8" 32.3# H-40
Rig-Up Equipment	11/03/2013 14:30							1-550 PICKUP, 1-ELITE PUMP, 1-660 CUFT BULK TRUCK
Safety Meeting	11/03/2013 15:30							ALL HES PRESENT, RIG CREW PRESENT, RIG STARTED CIRCULATING ON BOTTOM @ 1430
Start Job	11/03/2013 15:53		2	2			30.0	FILL LINES
Test Lines	11/03/2013 15:59		0.1	0.1			3676.0	GOOD PRESSURE TEST, NO LEAKS IN THE LINES
Pump Spacer 1	11/03/2013 16:05		4	20			89.0	FRESH WATER
Pump Lead Cement	11/03/2013 16:13		7	65.7			230.0	155 SKS 12.3 PPG 2.38 FT3/SK 13.75 GAL/SK
Pump Tail Cement	11/03/2013 16:23		7	60.1			230.0	160 SKS 12.8 PPG 2.11 FT3/SK 11.75 GAL/SK

Cementing Job Log

Activity Description	Date/Time	Cht #	Rate bbl/ min	Volume bbl		Pressure psig		Comments
				Stage	Total	Tubing	Casing	
Shutdown	11/03/2013 16:33							
Drop Plug	11/03/2013 16:35							PLUG DROP VERIFIED VIA TATTLE TELL BY CUSTOMER REP
Pump Displacement	11/03/2013 16:36		10	60			450.0	FRESH WATER, WASHED UP MIXING TUB ON TOP OF PLUG WITH FIRST 10 BBL OF DISPLACEMENT, CLEAN HARBOR COULD NOT KEEP UP WITH RETURNS HAD TO SLOW RATE @ 60 BBL AWAY
Slow Rate	11/03/2013 16:45		2	20.1	80.1		175.0	GOOD CIRCULATION THROUGH OUT THE JOB, 35 BBL CEMENT CIRCULATED TO SURFACE
Bump Plug	11/03/2013 16:52				80.1		235.0	PLUG BUMPED, BUMPED PLUG 5 BBL EARLY
Check Floats	11/03/2013 16:55						690.0	FLOATS HELD, 1/2 BBL BACK TO THE DISPLACEMENT TANKS
End Job	11/03/2013 16:57							THANK YOU FOR CHOOSING HALLIBURTON, THOMAS PONDER AND CREW

WPX - RWF 331-4 - 9 5/8" IN SURFACE



DH Density (ppg) 8.35 Comb Pump Rate (bbl/min) 0 PS Pump Press (psi) -14 Pump Stg Tot (bbl) 0

① Start Job 8.4;0;9;0 ③ Test Lines 8.38;0.8;803;2 ⑤ Pump Lead Cement 8.41;4;89;0.1 ⑦ Shutdown 11.57;0;56;67.6 ⑨ Pump Displacement 11.49;0.2;3;0 ⑪ Bump Plug 8.39;0;593;80.2 ⑬ End
 ② Other 8.4;0.4;6;0 ④ Pump Spacer 18.36;0.7;5;0 ⑥ Pump Tail Cement 12.62;7;221;0.1 ⑧ Drop Top Plug 11.48;0;3;67.6 ⑩ Slow Rate 8.43;4.6;296;61.2 ⑫ Check Floats 8.44;0;303;80.2

HALLIBURTON | iCem® Service

Created: 2013-11-03 14:01:19, Version: 2.0.606

Edit

Customer: WPX ENERGY ROCKY MOUNTAIN LLC-
EBUS

Job Date: 11/03/2013

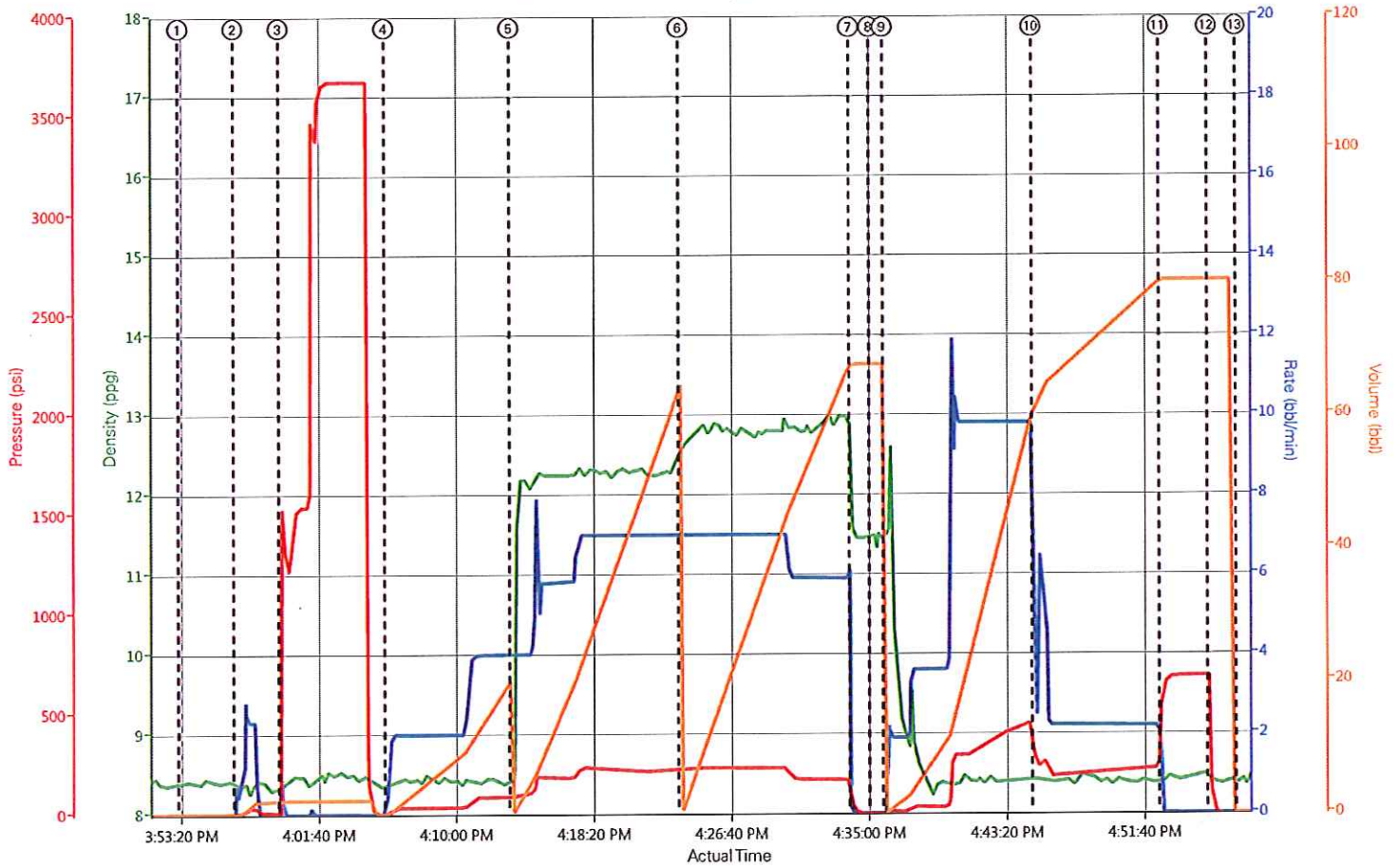
Well: RWF 331-4

Representative: MATT HUDSON

Sales Order #: 900872924

ELITE # 3: THOMAS PONDER / DAN SINCLAIR

WPX - RWF 331-4 - 9 5/8" IN SURFACE



DH Density (ppg) 8.34 Comb Pump Rate (bbl/min) 0 PS Pump Press (psi) -14 Pump Stg Tot (bbl) 0

HALLIBURTON | iCem® Service

Created: 2013-11-03 14:01:19, Version: 2.0.606

Edit

Customer: WPX ENERGY ROCKY MOUNTAIN LLC-EBUS

Job Date: 11/03/2013

Well: RWF 331-4

Representative: MATT HUDSON

Sales Order #: 900872924

ELITE # 3: THOMAS PONDER / DAN SINCLAIR