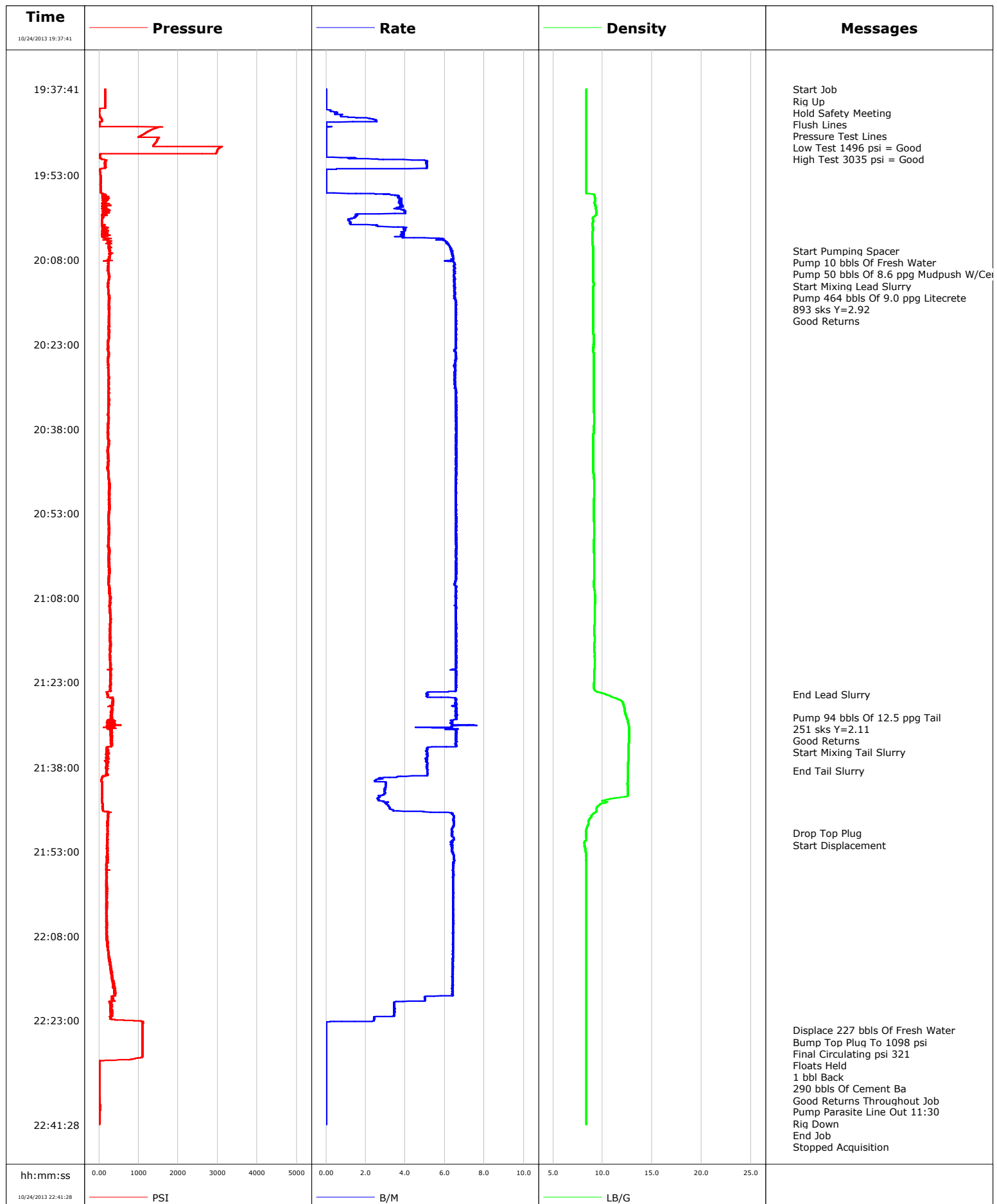


Well	SG 8516E-33 E34 496	Client	Encana
Field	Story Gulch	SIR No.	
Engineer	Justin Zika	Job Type	Surface
Country	United States	Job Date	10-24-2013

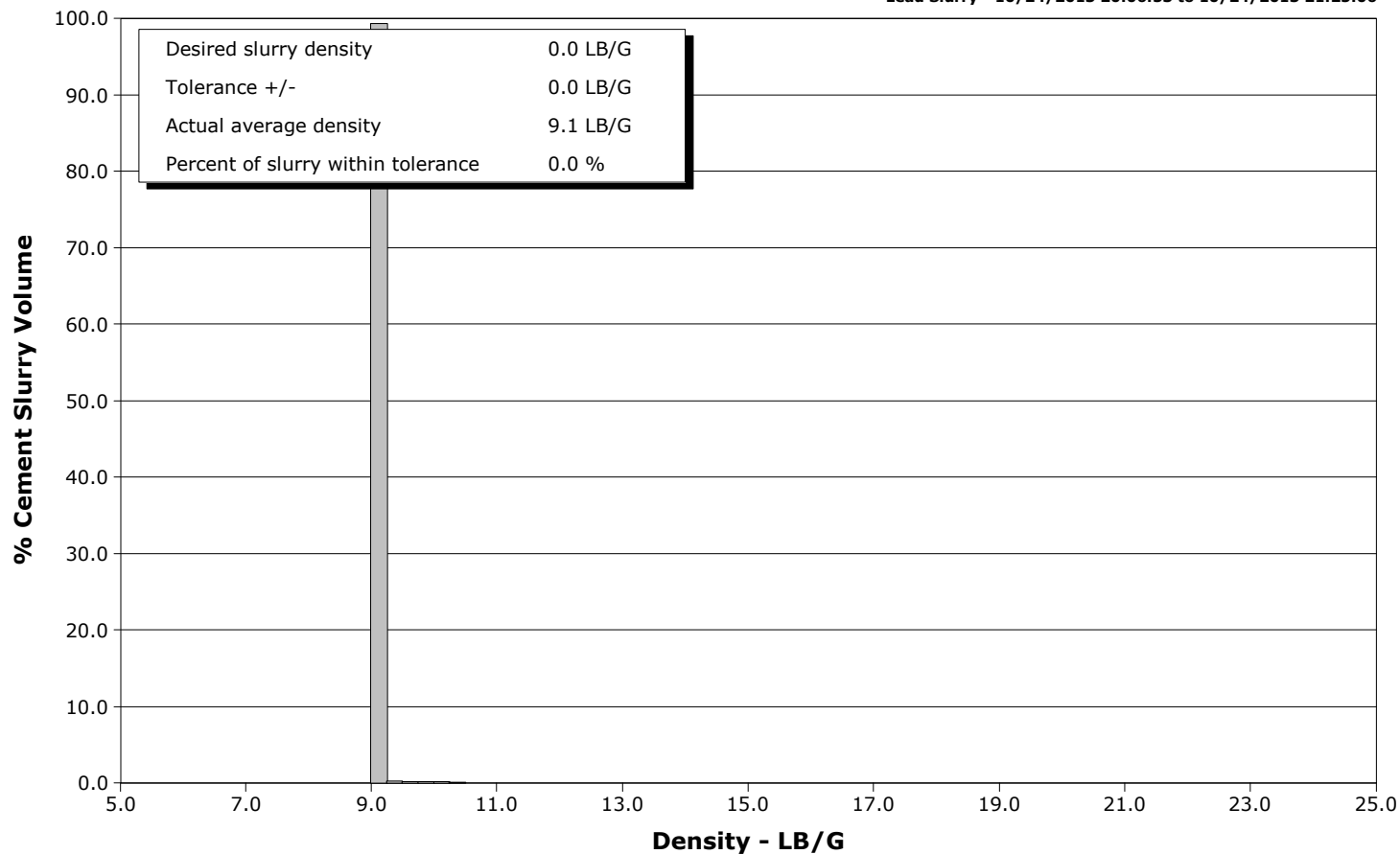


Schlumberger Cementing Qa/Qc Density Report

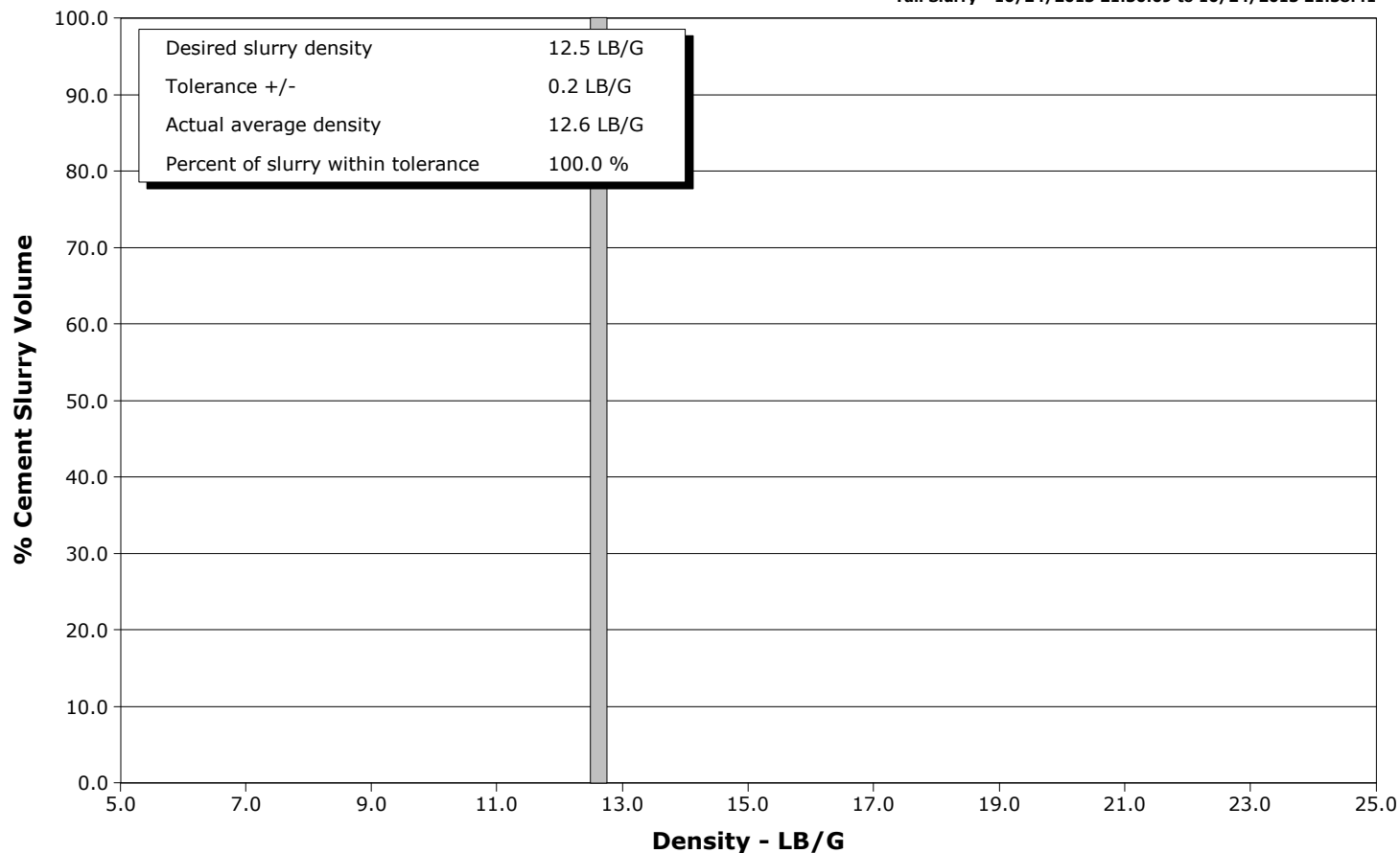
Well SG 8516E-33 E34 496
Field Story Gulch
Engineer Justin Zika
Country United States

Client Encana
SIR No.
Job Type Surface
Job Date 10-24-2013

Lead Slurry - 10/24/2013 20:06:53 to 10/24/2013 21:25:06



Tail Slurry - 10/24/2013 21:30:09 to 10/24/2013 21:38:41

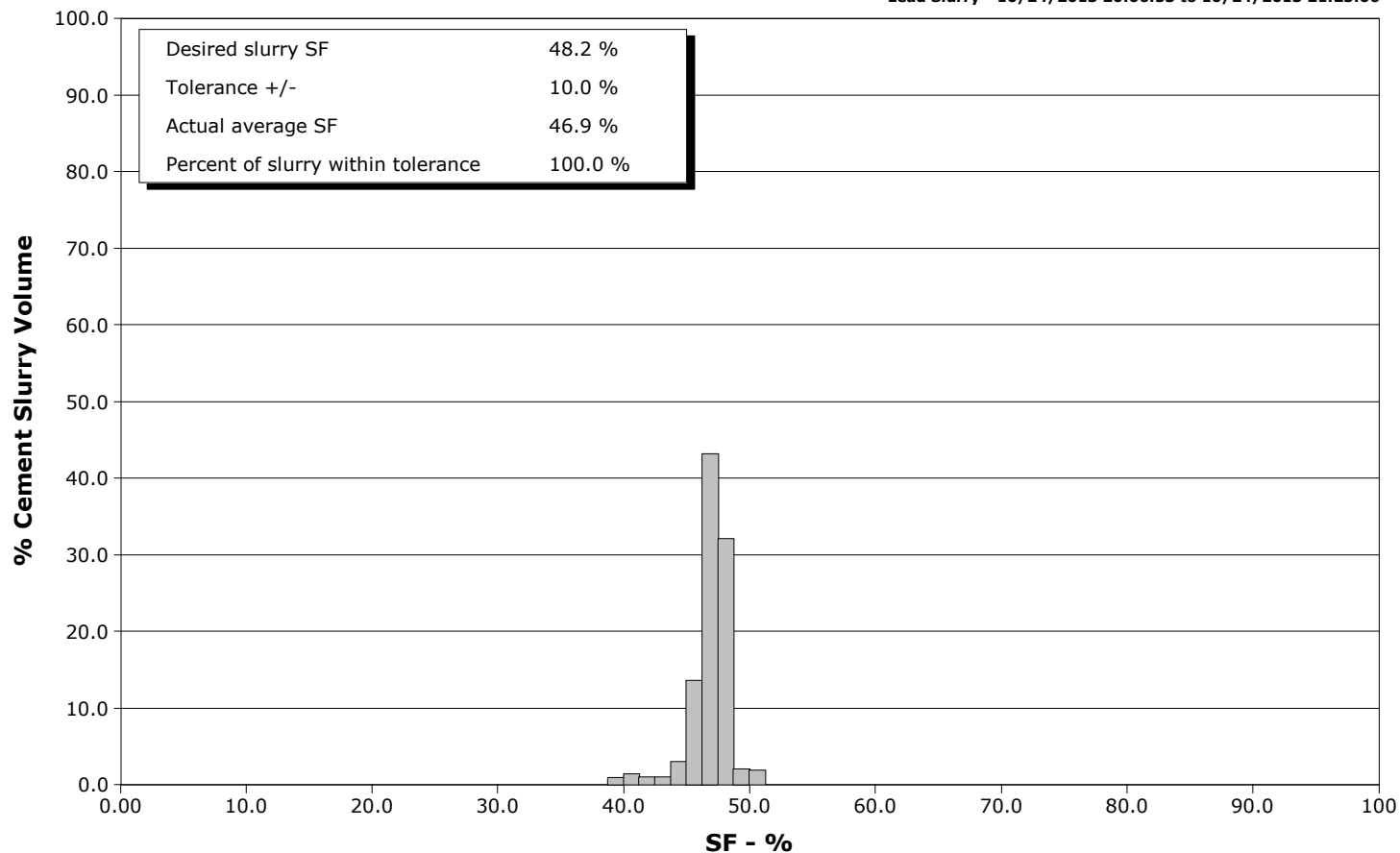


Schlumberger Cementing Qa/Qc SFM Report

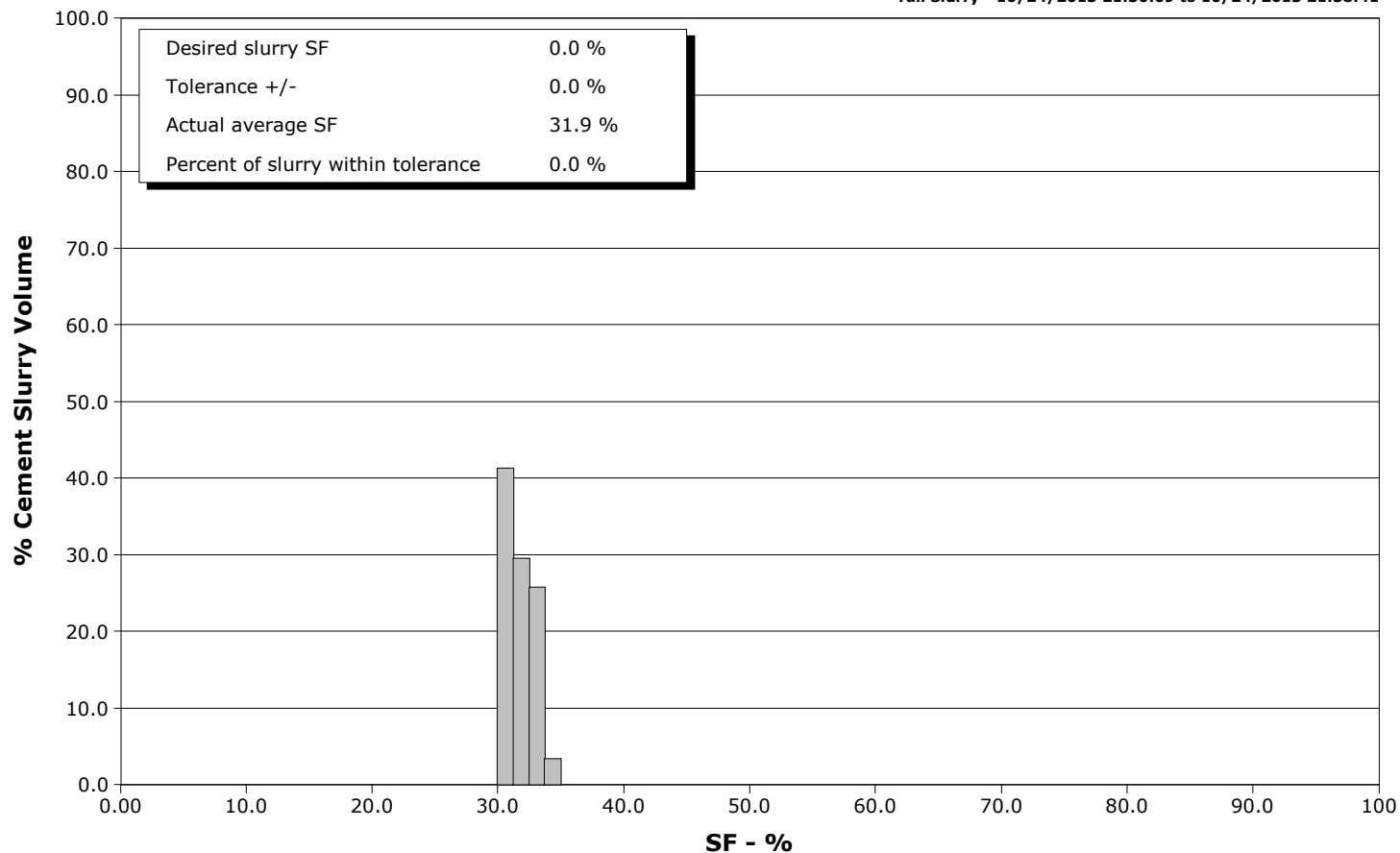
Well SG 8516E-33 E34 496
Field Story Gulch
Engineer Justin Zika
Country United States

Client Encana
SIR No.
Job Type Surface
Job Date 10-24-2013

Lead Slurry - 10/24/2013 20:06:53 to 10/24/2013 21:25:06



Tail Slurry - 10/24/2013 21:30:09 to 10/24/2013 21:38:41





Cementing Service Report

				Customer Encana			Job Number 1864629								
Well SG 8516E-33 E34 496 8516E-33 E34 496				Location (legal) Grand Junction, CO			Schlumberger Location GCO			Job Start Oct/24/2013					
Field Story Gulch			Formation Name/Type			Deviation		Bit Size		Well MD 2978.0 ft		Well TVD 2978.0 ft			
County Garfield			State/Province Colorado			BHP		BHST 120 degF		BHCT 92 degF		Pore Press. Gradient			
Well Master 0631501103			API/UWI												
Rig Name Patterson 326		Drilled For Gas		Service Via Land		Casing/Liner									
Offshore Zone		Well Class New		Well Type Development		Depth, ft		Size, in		Weight, lb/ft		Grade		Thread	
						2978.0		9.630		36.0		J55		8RD	
Drilling Fluid Type		Max. Density		Plastic Viscosity		Tubing/Drill Pipe									
						Depth,		Size,		Weight,		Grade		Thread	
Service Line Cementing		Job Type Surface													
Max. Allowed Tub. Press 1473 psi		Max. Allowed Ann. Press		WH Connection Single Cement head		Perforations/Open Hole									
Service Instructions Rig Up Hold Safety Meeting Flush Lines Pressure Test Lines Pump 10 bbls Of Fresh Water Pump 50 bbls Of 8.6 ppq Mudpush W/Cemnet+ Pump 464 bbls Of 9.0 ppq Litecrete W/Cemnet Pump 94 bbls Of 12.5 ppq Tail Drop Top Plug Displace						Top,		Bottom,				No. of Shots		Total Interval	
						Treat Down Casing		Displacement 227.0 bbl		Packer Type		Packer Depth			
						Tubing Vol.		Casing Vol. 230.0 bbl		Annular Vol. 363.0 bbl		Openhole Vol. 594.0 bbl			
Casing/Tubing Secured <input checked="" type="checkbox"/>		1 Hole Vol. Circulated prior to Cement <input checked="" type="checkbox"/>				Casing Tools				Squeeze Job					
Lift Pressure 1473 psi						Shoe Type Float				Squeeze Type					
Pipe Rotated <input type="checkbox"/>		Pipe Reciprocated <input type="checkbox"/>				Shoe Depth 2978.0 ft				Tool Type					
No. Centralizers		Top Plugs 1		Bottom Plugs		Stage Tool Type				Tool Depth					
Cement Head Type Single						Stage Tool Depth				Tail Pipe Size					
Job Scheduled For Oct/24/2013 15:00		Arrived on Location Oct/24/2013 15:00		Leave Location Oct/25/2013 01:00		Collar Type Float				Tail Pipe Depth					
						Collar Depth 2931.0 ft				Sqz. Total Vol.					
Date	Time 24-hr clock	Treating Pressure PSI	Flow Rate B/M	Density LB/G	Volume BBL	Message									
10/24/2013	19:03:19					Started Acquisition									
10/24/2013	19:37:41	148	0.0	8.37	0.0										
10/24/2013	19:37:45					Start Job									
10/24/2013	19:37:45	149	0.0	8.37	0.0										
10/24/2013	19:37:48					Rig Up									
10/24/2013	19:37:48					Hold Safety Meeting									
10/24/2013	19:37:48	149	0.0	8.37	0.0										
10/24/2013	19:37:49					Flush Lines									
10/24/2013	19:37:49	150	0.0	8.37	0.0										
10/24/2013	19:38:12					Pressure Test Lines									
10/24/2013	19:38:12	148	0.0	8.37	0.0										
10/24/2013	19:38:16					Low Test 1496 psi = Good									
10/24/2013	19:38:16	149	0.0	8.37	0.0										
10/24/2013	19:38:17					High Test 3035 psi = Good									
10/24/2013	19:38:17	148	0.0	8.37	0.0										
10/24/2013	19:38:19	148	0.0	8.37	0.0										
10/24/2013	19:39:59	149	0.0	8.37	0.0										
10/24/2013	19:41:39	1	0.2	8.37	0.1										
10/24/2013	19:43:19	74	2.5	8.36	2.1										
10/24/2013	19:44:59	1318	0.0	8.37	2.6										
10/24/2013	19:46:39	1473	0.0	8.37	2.6										

Well			Field		Job Start		Customer		Job Number	
SG 8516E-33 E34 496 8516E-33 E34 496			Story Gulch		Oct/24/2013		Encana		1864629	
Date	Time 24-hr clock	Treating Pressure PSI	Flow Rate B/M	Density LB/G	Volume BBL	Message				
10/24/2013	19:49:59	32	1.1	8.37	2.8					
10/24/2013	19:51:39	163	5.1	8.37	10.5					
10/24/2013	19:53:19	38	0.0	8.37	11.5					
10/24/2013	19:54:59	39	0.0	8.37	11.5					
10/24/2013	19:56:39	124	3.6	9.16	12.8					
10/24/2013	19:58:19	119	3.8	9.27	19.1					
10/24/2013	19:59:59	189	1.6	9.37	25.1					
10/24/2013	20:01:39	71	1.2	8.95	27.3					
10/24/2013	20:03:19	219	3.8	8.95	33.0					
10/24/2013	20:04:59	241	6.1	8.98	41.2					
10/24/2013	20:06:26					Start Pumping Spacer				
10/24/2013	20:06:26	273	6.4	9.06	50.3					
10/24/2013	20:06:28					Pump 10 bbls Of Fresh Water				
10/24/2013	20:06:28					Pump 50 bbls Of 8.6 ppg Mudpush W/Cemnet+				
10/24/2013	20:06:28	259	6.4	9.06	50.5					
10/24/2013	20:06:39	293	6.4	9.06	51.7					
10/24/2013	20:06:53					Start Mixing Lead Slurry				
10/24/2013	20:06:53	307	6.4	9.06	53.1					
10/24/2013	20:06:55					Pump 464 bbls Of 9.0 ppg Litecrete				
10/24/2013	20:06:55					893 sks Y=2.92				
10/24/2013	20:06:55	253	6.4	9.06	53.3					
10/24/2013	20:06:56					Good Returns				
10/24/2013	20:06:56	270	6.4	9.06	53.5					
10/24/2013	20:08:19	240	6.4	9.05	62.3					
10/24/2013	20:09:59	234	6.5	9.04	73.0					
10/24/2013	20:11:39	233	6.5	9.07	83.8					
10/24/2013	20:13:19	239	6.5	9.06	94.7					
10/24/2013	20:14:59	262	6.5	9.04	105.5					
10/24/2013	20:16:39	243	6.6	9.05	116.4					
10/24/2013	20:18:19	245	6.6	9.06	127.3					
10/24/2013	20:19:59	235	6.6	9.05	138.3					
10/24/2013	20:21:39	246	6.6	9.09	149.2					
10/24/2013	20:23:19	223	6.6	9.07	160.1					
10/24/2013	20:24:59	255	6.5	9.09	171.0					
10/24/2013	20:26:39	220	6.5	9.10	181.9					
10/24/2013	20:28:19	226	6.5	9.11	192.8					
10/24/2013	20:29:59	246	6.5	9.09	203.6					
10/24/2013	20:31:39	230	6.6	9.09	214.5					
10/24/2013	20:33:19	232	6.6	9.09	225.4					
10/24/2013	20:34:59	234	6.6	9.11	236.4					
10/24/2013	20:36:39	237	6.6	9.13	247.3					
10/24/2013	20:38:19	234	6.6	9.09	258.3					
10/24/2013	20:39:59	234	6.6	9.03	269.2					
10/24/2013	20:41:39	209	6.6	9.05	280.2					
10/24/2013	20:43:19	227	6.6	9.03	291.2					
10/24/2013	20:44:59	210	6.5	9.04	302.1					
10/24/2013	20:46:39	243	6.5	9.11	313.1					
10/24/2013	20:48:19	273	6.6	9.15	324.0					
10/24/2013	20:49:59	249	6.6	9.12	334.9					
10/24/2013	20:51:39	262	6.6	9.10	345.8					
10/24/2013	20:53:19	231	6.6	9.10	356.8					
10/24/2013	20:54:59	237	6.6	9.12	367.7					
10/24/2013	20:56:39	247	6.6	9.13	378.7					
10/24/2013	20:58:19	237	6.6	9.11	389.6					

Well			Field		Job Start		Customer		Job Number	
SG 8516E-33 E34 496 8516E-33 E34 496			Story Gulch		Oct/24/2013		Encana		1864629	
Date	Time 24-hr clock	Treating Pressure PSI	Flow Rate B/M	Density LB/G	Volume BBL	Message				
10/24/2013	21:01:39	238	6.6	9.16	411.5					
10/24/2013	21:03:19	258	6.6	9.15	422.5					
10/24/2013	21:04:59	238	6.5	9.11	433.4					
10/24/2013	21:06:39	261	6.6	9.17	444.3					
10/24/2013	21:08:19	285	6.5	9.24	455.2					
10/24/2013	21:09:59	278	6.5	9.17	466.1					
10/24/2013	21:11:39	298	6.5	9.19	477.1					
10/24/2013	21:13:19	268	6.6	9.16	488.0					
10/24/2013	21:14:59	274	6.6	9.17	498.9					
10/24/2013	21:16:39	296	6.6	9.16	509.9					
10/24/2013	21:18:19	273	6.6	9.17	520.8					
10/24/2013	21:19:59	278	6.6	9.17	531.8					
10/24/2013	21:21:39	306	6.6	9.15	542.7					
10/24/2013	21:23:19	299	6.6	9.11	553.6					
10/24/2013	21:24:59	210	5.1	10.11	564.1					
10/24/2013	21:25:06					End Lead Slurry				
10/24/2013	21:25:06	221	5.1	10.30	564.7					
10/24/2013	21:26:39	340	6.6	12.05	574.1					
10/24/2013	21:28:19	284	6.6	12.27	585.0					
10/24/2013	21:29:11					Pump 94 bbls Of 12.5 ppg Tail				
10/24/2013	21:29:11					251 sks Y=2.11				
10/24/2013	21:29:11					Good Returns				
10/24/2013	21:29:11	320	6.6	12.42	590.7					
10/24/2013	21:29:59	279	6.4	12.55	595.9					
10/24/2013	21:30:09					Start Mixing Tail Slurry				
10/24/2013	21:30:09	337	6.4	12.57	596.9					
10/24/2013	21:31:39	328	6.5	12.67	606.6					
10/24/2013	21:33:19	306	6.6	12.65	617.5					
10/24/2013	21:34:59	205	5.1	12.63	627.6					
10/24/2013	21:36:39	223	5.1	12.64	636.1					
10/24/2013	21:38:19	174	5.1	12.58	644.6					
10/24/2013	21:38:41					End Tail Slurry				
10/24/2013	21:38:41	205	5.1	12.58	646.5					
10/24/2013	21:39:59	65	2.7	12.58	652.5					
10/24/2013	21:41:39	79	3.0	12.55	657.2					
10/24/2013	21:43:19	80	2.7	12.21	662.1					
10/24/2013	21:44:59	86	3.1	9.51	666.9					
10/24/2013	21:46:39	232	6.4	8.88	674.5					
10/24/2013	21:48:19	208	6.5	8.51	685.3					
10/24/2013	21:49:43					Drop Top Plug				
10/24/2013	21:49:43	208	6.4	8.33	694.2					
10/24/2013	21:49:44					Start Displacement				
10/24/2013	21:49:44	224	6.4	8.33	694.3					
10/24/2013	21:49:59	214	6.3	8.32	695.9					
10/24/2013	21:51:39	206	6.3	8.16	706.5					
10/24/2013	21:53:19	214	6.4	8.29	717.2					
10/24/2013	21:54:59	200	6.4	8.36	727.9					
10/24/2013	21:56:39	195	6.4	8.36	738.6					
10/24/2013	21:58:19	190	6.4	8.36	749.3					
10/24/2013	21:59:59	206	6.4	8.36	760.0					
10/24/2013	22:01:39	181	6.4	8.36	770.7					
10/24/2013	22:03:19	185	6.4	8.36	781.4					
10/24/2013	22:04:59	182	6.4	8.36	792.1					
10/24/2013	22:06:39	200	6.4	8.36	802.7					

Well			Field		Job Start	Customer	Job Number
SG 8516E-33 E34 496 8516E-33 E34 496			Story Gulch		Oct/24/2013	Encana	1864629
Date	Time 24-hr clock	Treating Pressure PSI	Flow Rate B/M	Density LB/G	Volume BBL	Message	
10/24/2013	22:09:59	206	6.4	8.36	824.1		
10/24/2013	22:11:39	247	6.4	8.36	834.8		
10/24/2013	22:13:19	284	6.4	8.36	845.4		
10/24/2013	22:14:59	334	6.4	8.36	856.1		
10/24/2013	22:16:39	370	6.4	8.36	866.7		
10/24/2013	22:18:19	388	6.4	8.36	877.4		
10/24/2013	22:19:59	265	3.5	8.36	885.6		
10/24/2013	22:21:39	293	3.5	8.36	891.3		
10/24/2013	22:23:19	1094	0.0	8.36	895.7		
10/24/2013	22:24:41					Displace 227 bbls Of Fresh Water	
10/24/2013	22:24:41	1098	0.0	8.36	895.7		
10/24/2013	22:24:42					Bump Top Plug To 1098 psi	
10/24/2013	22:24:42	1098	0.0	8.36	895.7		
10/24/2013	22:24:43					Final Circulating psi 321	
10/24/2013	22:24:43					Floats Held	
10/24/2013	22:24:43	1098	0.0	8.36	895.7		
10/24/2013	22:24:44					1 bbl Back	
10/24/2013	22:24:44					290 bbls Of Cement Ba	
10/24/2013	22:24:44					Good Returns Throughout Job	
10/24/2013	22:24:44					Pump Parasite Line Out 11:30	
10/24/2013	22:24:44					Rig Down	
10/24/2013	22:24:44	1099	0.0	8.36	895.7		
10/24/2013	22:24:59	1098	0.0	8.36	895.7		
10/24/2013	22:26:39	1098	0.0	8.36	895.7		
10/24/2013	22:28:19	1098	0.0	8.36	895.7		
10/24/2013	22:29:59	766	0.0	8.36	895.7		
10/24/2013	22:31:39	5	0.0	8.36	895.7		
10/24/2013	22:33:19	5	0.0	8.37	895.7		
10/24/2013	22:34:59	4	0.0	8.37	895.7		
10/24/2013	22:35:13					End Job	
10/24/2013	22:35:13	5	0.0	8.37	895.7		
10/24/2013	22:36:39	13	0.0	8.37	895.7		
10/24/2013	22:38:19	24	0.0	8.37	895.7		
10/24/2013	22:39:59	18	0.0	8.37	895.7		

Post Job Summary

Average Pump Rates,					Volume of Fluid Injected, bbl				
Slurry	N2	Mud	Maximum Rate		Total Slurry 559.0	Mud	Spacer 60.0	N2	
Treating Pressure Summary, psi					Breakdown Fluid				
Maximum 3000	Final 321	Average	Bump Plug to 1098	Breakdown	Type		Volume		Density
Avg. N2 Percent		Designed Slurry Volume 559.0 bbl		Displacement 227.0 bbl	Mix Water Temp 65 degF	Cement Circulated to Surface? <input checked="" type="checkbox"/>		Volume 290.0 bbl	
						Washed Thru Perfs <input type="checkbox"/>		To	
Customer or Authorized Representative				Schlumberger Supervisor			Circulation Lost <input type="checkbox"/>		Job Completed <input checked="" type="checkbox"/>
Norman Mcreary				Justin Zika			-		-