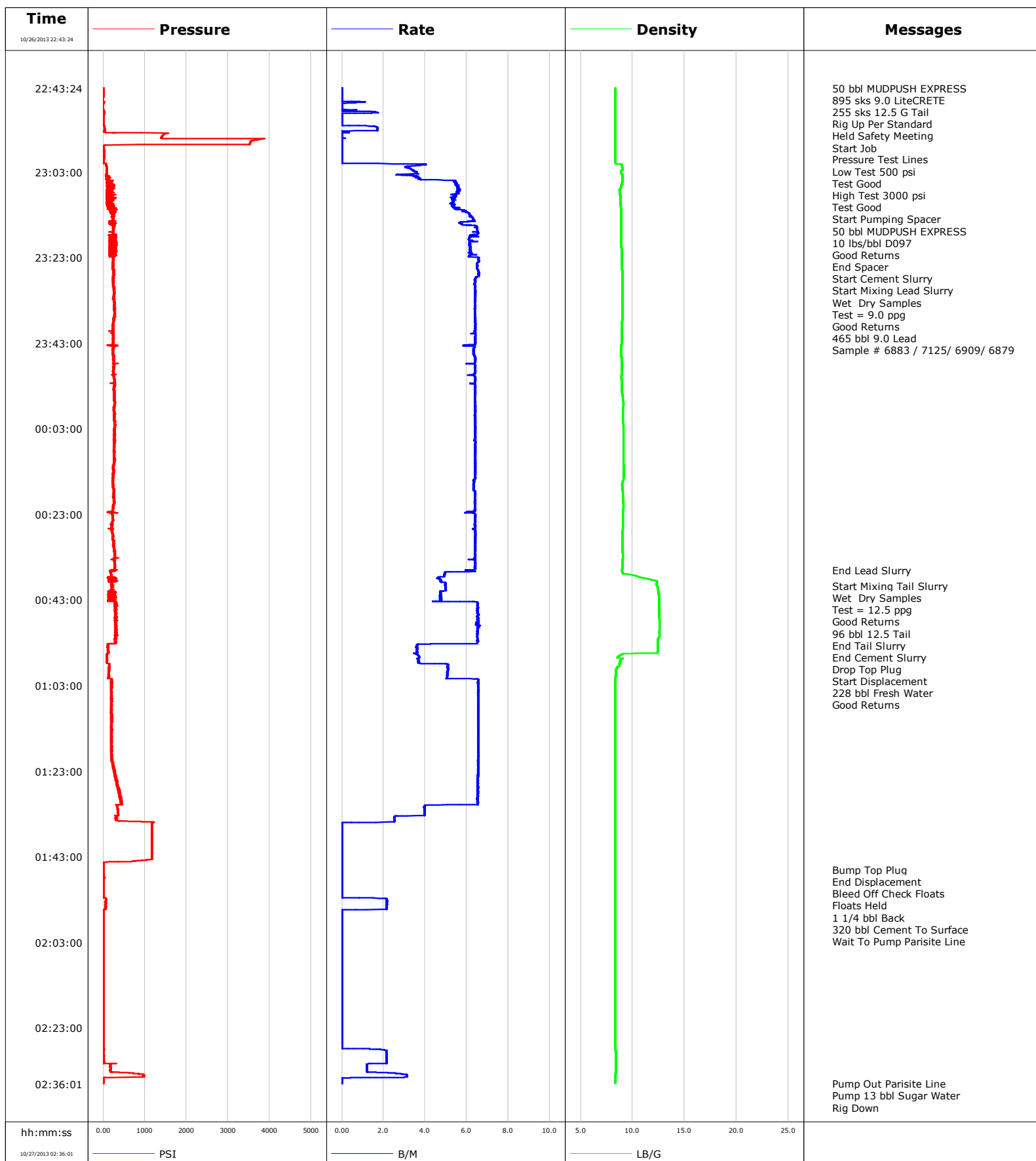


**Well** SGU 8516C-33  
**Field** Story Gulch  
**Engineer** Jordan Moreland / Stacy Terry  
**Country** United States

**Client** Encana  
**SIR No.** COU5-00051  
**Job Type** 9 5/8 Surface  
**Job Date** 10-26-2013





# Cementing Service Report

				Customer Encana		Job Number COU5-00051	
Well SGU 8516C-33			Location (legal) E34		Schlumberger Location GCO		Job Start Oct/26/2013
Field Story Gulch		Formation Name/Type Shale		Deviation	Bit Size 14.8 in	Well MD	Well TVD
County Garfield		State/Province Colorado		BHP	BHST 120 degF	BHCT 92 degF	Pore Press. Gradient
Well Master 0631501102		API/UWI					
Rig Name Patterson 326		Drilled For Gas	Service Via Land	Casing/Liner			
				Depth, ft	Size, in	Weight, lb/ft	Grade
Offshore Zone		Well Class New	Well Type Development	2995.0	9.630	36.0	J55
				0.0	0.000	0.0	
Drilling Fluid Type		Max. Density 8.90 lb/gal	Plastic Viscosity	Tubing/Drill Pipe			
				Depth,	Size,	Weight,	Grade
Service Line Cementing		Job Type 9 5/8 Surface					
Max. Allowed Tub. Press 3000 psi		Max. Allowed Ann. Press	WH Connection Single Cement head	Perforations/Open Hole			
				Top,	Bottom,	No. of Shots	Total Interval
							Diameter
				Treat Down Casing	Displacement 228.0 bbl	Packer Type	Packer Depth
				Tubing Vol.	Casing Vol. 331.0 bbl	Annular Vol. 381.0 bbl	Openhole Vol. 630.0 bbl
Casing/Tubing Secured <input checked="" type="checkbox"/>		1 Hole Vol. Circulated prior to Cement <input checked="" type="checkbox"/>		Casing Tools		Squeeze Job	
Lift Pressure 1482 psi				Shoe Type Guide		Squeeze Type	
Pipe Rotated <input type="checkbox"/>		Pipe Reciprocated <input type="checkbox"/>		Shoe Depth 2995.0 ft		Tool Type	
No. Centralizers		Top Plugs 1	Bottom Plugs	Stage Tool Type		Tool Depth	
Cement Head Type Single				Stage Tool Depth		Tail Pipe Size	
Job Scheduled For Oct/26/2013		Arrived on Location Oct/26/2013	Leave Location Oct/26/2013	Collar Type Float		Tail Pipe Depth	
				Collar Depth 2950.0 ft		Sqz. Total Vol.	
Date	Time 24-hr clock	Treating Pressure PSI	Flow Rate B/M	Density LB/G	Volume BBL	Message	
10/26/2013	22:07:14					Started Acquisition	
10/26/2013	22:43:24	1	0.0	8.37	0.0		
10/26/2013	22:43:27					50 bbl MUDPUSH EXPRESS	
10/26/2013	22:43:27					895 sks 9.0 LiteCRETE	
10/26/2013	22:43:27					255 sks 12.5 G Tail	
10/26/2013	22:43:27					Rig Up Per Standard	
10/26/2013	22:43:27					Held Safety Meeting	
10/26/2013	22:43:27	1	0.0	8.37	0.0		
10/26/2013	22:43:29					Start Job	
10/26/2013	22:43:29	1	0.0	8.37	0.0		
10/26/2013	22:43:31					Pressure Test Lines	
10/26/2013	22:43:31	1	0.0	8.37	0.0		
10/26/2013	22:43:33					Low Test 500 psi	
10/26/2013	22:43:33					Test Good	
10/26/2013	22:43:33					High Test 3000 psi	
10/26/2013	22:43:33					Test Good	
10/26/2013	22:43:33	1	0.0	8.37	0.0		
10/26/2013	22:44:44	1	0.0	8.37	0.0		
10/26/2013	22:47:14	-1	0.0	8.37	0.3		
10/26/2013	22:49:44	12	0.0	8.37	1.2		
10/26/2013	22:52:14	7	0.0	8.37	1.2		

Well			Field		Job Start		Customer		Job Number	
SGU 8516C-33			Story Gulch		Oct/26/2013		Encana		COU5-00051	
Date	Time 24-hr clock	Treating Pressure PSI	Flow Rate B/M	Density LB/G	Volume BBL	Message				
10/26/2013	22:57:14	8	0.0	8.37	3.2					
10/26/2013	22:59:44	18	0.0	8.37	3.2					
10/26/2013	23:00:55					Start Pumping Spacer				
10/26/2013	23:00:55	7	0.0	8.37	3.2					
10/26/2013	23:00:56					50 bbl MUDPUSH EXPRESS				
10/26/2013	23:00:56					10 lbs/bbl D097				
10/26/2013	23:00:56					Good Returns				
10/26/2013	23:00:56	8	0.0	8.37	3.2					
10/26/2013	23:02:14	82	3.3	9.04	7.0					
10/26/2013	23:04:44	76	3.7	9.04	15.7					
10/26/2013	23:07:14	81	5.7	8.77	29.1					
10/26/2013	23:09:44	244	5.4	8.85	42.8					
10/26/2013	23:11:01					End Spacer				
10/26/2013	23:11:01	160	5.3	8.85	49.6					
10/26/2013	23:11:25					Start Cement Slurry				
10/26/2013	23:11:25	230	5.7	8.88	51.8					
10/26/2013	23:11:26					Start Mixing Lead Slurry				
10/26/2013	23:11:26	145	5.7	8.88	51.9					
10/26/2013	23:11:28					Wet Dry Samples				
10/26/2013	23:11:28					Test = 9.0 ppg				
10/26/2013	23:11:28					Good Returns				
10/26/2013	23:11:28	145	5.5	8.88	52.1					
10/26/2013	23:11:29					465 bbl 9.0 Lead				
10/26/2013	23:11:29					Sample # 6883 / 7125/ 6909/ 6879				
10/26/2013	23:11:29	172	5.5	8.88	52.1					
10/26/2013	23:12:14	308	6.0	8.93	56.4					
10/26/2013	23:14:44	143	5.9	8.93	71.9					
10/26/2013	23:17:14	229	6.5	8.95	87.5					
10/26/2013	23:19:44	249	6.1	8.94	103.2					
10/26/2013	23:22:14	160	6.2	8.97	118.7					
10/26/2013	23:24:44	239	6.5	8.97	134.8					
10/26/2013	23:27:14	243	6.6	9.02	151.1					
10/26/2013	23:29:44	240	6.4	9.00	167.2					
10/26/2013	23:32:14	252	6.4	9.03	183.2					
10/26/2013	23:34:44	266	6.4	9.02	199.2					
10/26/2013	23:37:14	243	6.4	9.03	215.2					
10/26/2013	23:39:44	231	6.4	8.97	231.2					
10/26/2013	23:42:14	236	6.4	8.96	247.3					
10/26/2013	23:44:44	233	6.3	8.93	263.0					
10/26/2013	23:47:14	249	6.4	8.98	279.0					
10/26/2013	23:49:44	256	6.4	8.97	295.0					
10/26/2013	23:52:14	269	6.4	8.97	310.9					
10/26/2013	23:54:44	273	6.4	9.00	326.9					
10/26/2013	23:57:14	278	6.4	9.10	342.9					
10/26/2013	23:59:44	263	6.4	9.06	358.9					
10/27/2013	00:02:14	278	6.4	9.10	374.9					
10/27/2013	00:04:44	283	6.4	9.11	390.9					
10/27/2013	00:07:14	278	6.4	9.10	407.0					
10/27/2013	00:09:44	267	6.4	9.11	423.0					
10/27/2013	00:12:14	253	6.4	9.16	439.0					
10/27/2013	00:14:44	234	6.4	9.12	455.0					
10/27/2013	00:17:14	249	6.3	9.04	470.9					
10/27/2013	00:19:44	256	6.4	9.09	486.9					
10/27/2013	00:22:14	220	6.4	9.08	502.9					

Well			Field		Job Start		Customer		Job Number	
SGU 8516C-33			Story Gulch		Oct/26/2013		Encana		COU5-00051	
Date	Time 24-hr clock	Treating Pressure PSI	Flow Rate B/M	Density LB/G	Volume BBL	Message				
10/27/2013	00:27:14	225	6.4	9.03	534.8					
10/27/2013	00:29:44	262	6.4	9.01	550.8					
10/27/2013	00:32:14	280	6.4	9.06	566.8					
10/27/2013	00:34:44	273	6.4	9.01	582.8					
10/27/2013	00:36:07					End Lead Slurry				
10/27/2013	00:36:07	198	6.0	8.99	591.6					
10/27/2013	00:37:14	193	4.9	10.00	597.5					
10/27/2013	00:39:44					Start Mixing Tail Slurry				
10/27/2013	00:39:44					Wet Dry Samples				
10/27/2013	00:39:44	213	5.0	12.36	609.6					
10/27/2013	00:39:45					Test = 12.5 ppg				
10/27/2013	00:39:45					Good Returns				
10/27/2013	00:39:45					96 bbl 12.5 Tail				
10/27/2013	00:39:45	216	5.0	12.37	609.7					
10/27/2013	00:42:14	148	4.7	12.54	621.7					
10/27/2013	00:44:44	306	6.5	12.55	635.9					
10/27/2013	00:47:14	309	6.5	12.57	652.3					
10/27/2013	00:49:32					End Tail Slurry				
10/27/2013	00:49:32	291	6.5	12.58	667.3					
10/27/2013	00:49:34					End Cement Slurry				
10/27/2013	00:49:34	298	6.5	12.58	667.5					
10/27/2013	00:49:35					Drop Top Plug				
10/27/2013	00:49:35					Start Displacement				
10/27/2013	00:49:35	298	6.5	12.58	667.6					
10/27/2013	00:49:37					228 bbl Fresh Water				
10/27/2013	00:49:37					Good Returns				
10/27/2013	00:49:37	294	6.5	12.58	667.9					
10/27/2013	00:49:44	300	6.5	12.58	668.6					
10/27/2013	00:52:14	323	6.5	12.42	684.9					
10/27/2013	00:54:44	111	3.6	12.42	697.0					
10/27/2013	00:57:14	87	3.7	8.84	706.1					
10/27/2013	00:59:44	138	5.1	8.40	718.0					
10/27/2013	01:02:14	189	6.5	8.37	731.8					
10/27/2013	01:04:44	191	6.6	8.37	748.2					
10/27/2013	01:07:14	214	6.6	8.37	764.6					
10/27/2013	01:09:44	179	6.6	8.37	781.0					
10/27/2013	01:12:14	195	6.6	8.37	797.4					
10/27/2013	01:14:44	185	6.6	8.37	813.8					
10/27/2013	01:17:14	188	6.6	8.37	830.2					
10/27/2013	01:19:44	218	6.6	8.37	846.6					
10/27/2013	01:22:14	239	6.5	8.37	863.0					
10/27/2013	01:24:44	296	6.5	8.37	879.3					
10/27/2013	01:27:14	387	6.5	8.37	895.6					
10/27/2013	01:29:44	431	6.5	8.37	912.0					
10/27/2013	01:32:14	352	4.0	8.36	924.8					
10/27/2013	01:34:44	626	2.5	8.36	932.9					
10/27/2013	01:37:14	1173	0.0	8.37	933.5					
10/27/2013	01:39:44	1175	0.0	8.37	933.5					
10/27/2013	01:42:14	1177	0.0	8.37	933.5					
10/27/2013	01:44:44	8	0.0	8.37	933.5					
10/27/2013	01:46:00					Bump Top Plug				
10/27/2013	01:46:00	7	0.0	8.37	933.5					
10/27/2013	01:46:01					End Displacement				
10/27/2013	01:46:01	7	0.0	8.37	933.5					

Well			Field		Job Start		Customer		Job Number	
SGU 8516C-33			Story Gulch		Oct/26/2013		Encana		COU5-00051	
Date	Time 24-hr clock	Treating Pressure PSI	Flow Rate B/M	Density LB/G	Volume BBL	Message				
10/27/2013	01:46:04					Floats Held				
10/27/2013	01:46:04					1 1/4 bbl Back				
10/27/2013	01:46:04					320 bbl Cement To Surface				
10/27/2013	01:46:04	8	0.0	8.37	933.5					
10/27/2013	01:46:05					Wait To Pump Parisite Line				
10/27/2013	01:46:05	7	0.0	8.37	933.5					
10/27/2013	01:47:14	7	0.0	8.37	933.5					
10/27/2013	01:49:44	6	0.0	8.37	933.5					
10/27/2013	01:52:14	6	0.0	8.37	933.5					
10/27/2013	01:54:44	59	2.2	8.36	937.9					
10/27/2013	01:57:14	5	0.0	8.36	939.3					
10/27/2013	01:59:44	6	0.0	8.36	939.3					
10/27/2013	02:02:14	6	0.0	8.36	939.3					
10/27/2013	02:04:44	6	0.0	8.37	939.3					
10/27/2013	02:07:14	5	0.0	8.37	939.3					
10/27/2013	02:09:44	5	0.0	8.37	939.3					
10/27/2013	02:12:14	5	0.0	8.37	939.3					
10/27/2013	02:14:44	5	0.0	8.37	939.3					
10/27/2013	02:17:14	5	0.0	8.37	939.3					
10/27/2013	02:19:44	5	0.0	8.37	939.3					
10/27/2013	02:22:14	5	0.0	8.37	939.3					
10/27/2013	02:24:44	5	0.0	8.37	939.3					
10/27/2013	02:27:14	1	0.0	8.37	939.3					
10/27/2013	02:29:44	11	2.2	8.40	943.2					
10/27/2013	02:32:14	170	1.2	8.40	947.7					
10/27/2013	02:34:44	-2	0.0	8.38	952.6					
10/27/2013	02:35:58					Pump Out Parisite Line				
10/27/2013	02:35:58					Pump 13 bbl Sugar Water				
10/27/2013	02:35:58					Rig Down				
10/27/2013	02:35:58	1	0.0	8.38	952.6					
10/27/2013	02:35:59					End Job				
10/27/2013	02:35:59	1	0.0	8.38	952.6					

### Post Job Summary

Average Pump Rates,					Volume of Fluid Injected,			
Slurry	N2	Mud	Maximum Rate		Total Slurry	Mud	Spacer	N2
Treating Pressure Summary,					Breakdown Fluid			
Maximum	Final	Average	Bump Plug to	Breakdown	Type	Volume	Density	
Avg. N2 Percent		Designed Slurry Volume		Displacement	Mix Water Temp	Cement Circulated to Surface?	Volume	
					68 degF	Washed Thru Perfs	To	
Customer or Authorized Representative				Schlumberger Supervisor		Circulation Lost	Job Completed	
Norman Mcreary				Jordan Moreland / Stacy Terry		-	-	