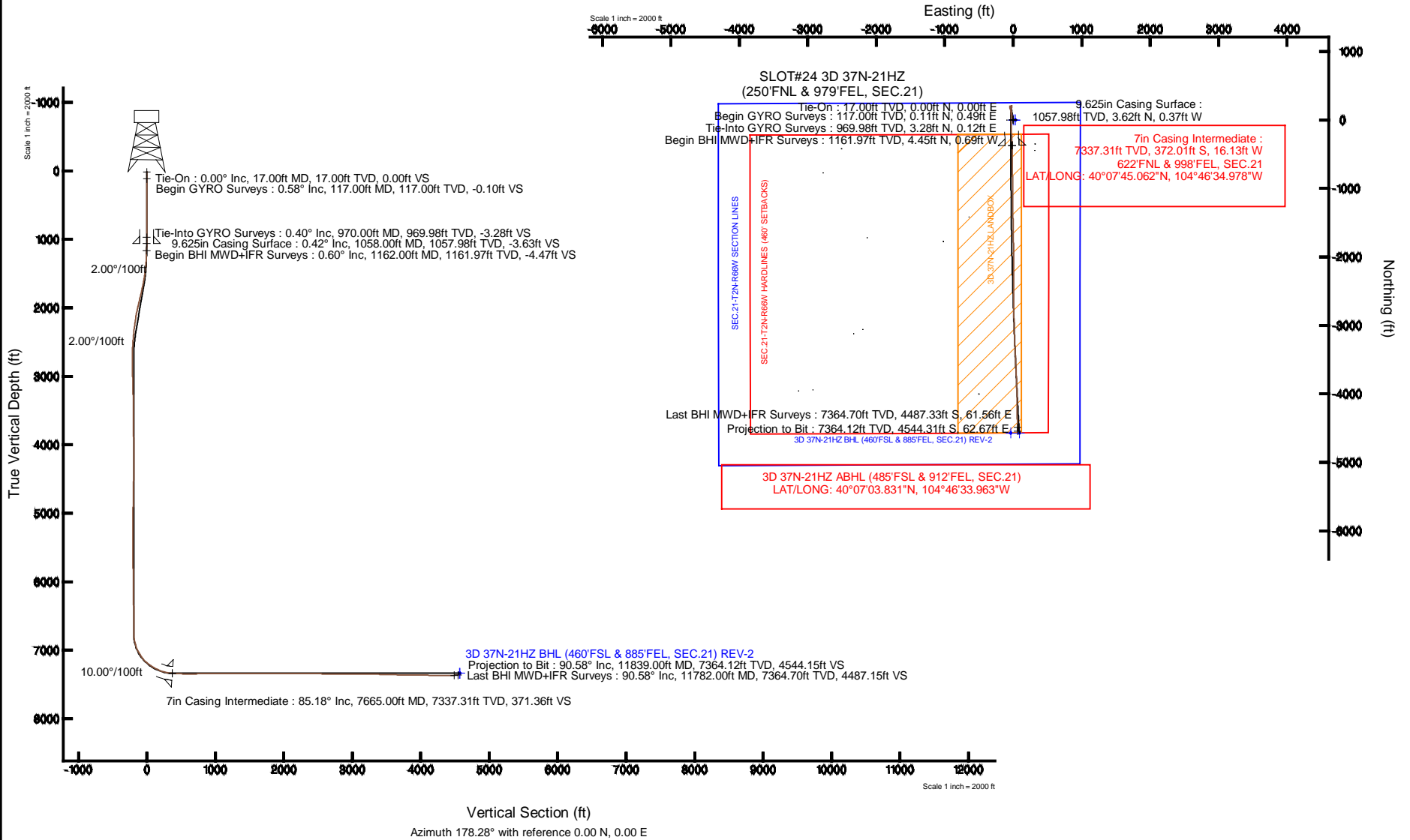


KERR-MCGEE OIL & GAS ONSHORE LP

Location: COLORADO Slot: SLOT#24 3D 37N-21HZ (250'FNL & 979'FEL, SEC.21)
 Field: WELD COUNTY (KERR MCGEE) Well: 3D 37N-21HZ
 Facility: SEC.21-T2N-R66W Wellbore: 3D 37N-21HZ PWB

Plot reference wellpath is 3D 37N-21HZ (REV-B.0) PWP

True vertical depths are referenced to XTREME 8 (17KB) (RKB)	Grid System: NAD83 / Lambert Colorado SP, Northern Zone (501), US feet
Measured depths are referenced to XTREME 8 (17KB) (RKB)	North Reference: True north
XTREME 8 (17KB) (RKB) to Mean Sea Level: 5006 feet	Scale: True distance
Mean Sea Level to Mud line (At Slot: SLOT#24 3D 37N-21HZ (250'FNL & 979'FEL, SEC.21)): 0 feet	Depths are in feet
Coordinates are in feet referenced to Slot	Created by: precain on 13Jan2014



REFERENCE WELLPATH IDENTIFICATION

Operator	KERR-MCGEE OIL & GAS ONSHORE LP	Slot	SLOT#24 3D 37N-21HZ (250'FNL & 979'FEL, SEC.21)
Area	COLORADO	Well	3D 37N-21HZ
Field	WELD COUNTY (KERR MCGEE)	Wellbore	3D 37N-21HZ AWB
Facility	SEC.21-T2N-R66W		

REPORT SETUP INFORMATION

Projection System	NAD83 / Lambert Colorado SP, Northern Zone (501), US feet	Software System	WellArchitect® 4.0.0
North Reference	True	User	Precain
Scale	0.999959	Report Generated	13/Jan/2014 at 14:41
Convergence at slot	n/a	Database/Source file	WellArchitectDB/3D_37N-21HZ_AWB.xml

WELLPATH LOCATION

	Local coordinates		Grid coordinates		Geographic coordinates	
	North[ft]	East[ft]	Easting[US ft]	Northing[US ft]	Latitude	Longitude
Slot Location	350.53	-319.01	3202350.82	1291103.15	40°07'48.738"N	104°46'34.770"W
Facility Reference Pt			3202672.68	1290755.25	40°07'45.274"N	104°46'30.663"W
Field Reference Pt			3197771.84	1268891.29	40°04'09.600"N	104°47'36.000"W

WELLPATH DATUM

Calculation method	Minimum curvature	XTREME 8 (17'KB) (RKB) to Facility Vertical Datum	5006.00ft
Horizontal Reference Pt	Slot	XTREME 8 (17'KB) (RKB) to Mean Sea Level	5006.00ft
Vertical Reference Pt	XTREME 8 (17'KB) (RKB)	XTREME 8 (17'KB) (RKB) to Mud Line at Slot (SLOT#24 3D 37N-21HZ (250'FNL & 979'FEL, SEC.21))	5006.00ft
MD Reference Pt	XTREME 8 (17'KB) (RKB)	Section Origin	N 0.00, E 0.00 ft
Field Vertical Reference	Mean Sea Level	Section Azimuth	178.28°

REFERENCE WELLPATH IDENTIFICATION

Operator	KERR-MCGEE OIL & GAS ONSHORE LP	Slot	SLOT#24 3D 37N-21HZ (250'FNL & 979'FEL, SEC.21)
Area	COLORADO	Well	3D 37N-21HZ
Field	WELD COUNTY (KERR MCGEE)	Wellbore	3D 37N-21HZ AWB
Facility	SEC.21-T2N-R66W		

WELLPATH DATA (115 stations) † = interpolated/extrapolated station

MD [ft]	Inclination [°]	Azimuth [°]	TVD [ft]	Vert Sect [ft]	North [ft]	East [ft]	Latitude	Longitude	DLS [°/100ft]	Comments
0.00†	0.000	77.150	0.00	0.00	0.00	0.00	40°07'48.738"N	104°46'34.770"W	0.00	
17.00	0.000	77.150	17.00	0.00	0.00	0.00	40°07'48.738"N	104°46'34.770"W	0.00	Tie-On
117.00	0.580	77.150	117.00	-0.10	0.11	0.49	40°07'48.739"N	104°46'34.764"W	0.58	Begin GYRO Surveys
217.00	0.530	26.530	216.99	-0.60	0.64	1.19	40°07'48.744"N	104°46'34.755"W	0.48	
317.00	0.660	355.600	316.99	-1.59	1.63	1.36	40°07'48.754"N	104°46'34.753"W	0.34	
417.00	0.410	294.860	416.99	-2.32	2.35	0.99	40°07'48.761"N	104°46'34.757"W	0.58	
517.00	0.120	174.770	516.98	-2.38	2.40	0.67	40°07'48.762"N	104°46'34.761"W	0.48	
617.00	0.310	86.060	616.98	-2.28	2.31	0.95	40°07'48.761"N	104°46'34.758"W	0.33	
717.00	0.350	23.670	716.98	-2.57	2.61	1.34	40°07'48.764"N	104°46'34.753"W	0.34	
817.00	0.440	302.600	816.98	-3.06	3.10	1.14	40°07'48.769"N	104°46'34.755"W	0.52	
917.00	0.390	262.570	916.98	-3.24	3.26	0.48	40°07'48.770"N	104°46'34.764"W	0.29	
970.00	0.400	285.080	969.98	-3.28	3.28	0.12	40°07'48.770"N	104°46'34.768"W	0.29	Tie-Into GYRO Surveys
1162.00	0.600	350.190	1161.97	-4.47	4.45	-0.69	40°07'48.782"N	104°46'34.779"W	0.29	Begin BHI MWD+IFR Surveys
1253.00	2.320	352.420	1252.94	-6.77	6.75	-1.02	40°07'48.805"N	104°46'34.783"W	1.89	
1345.00	4.630	339.630	1344.76	-12.14	12.07	-2.56	40°07'48.857"N	104°46'34.803"W	2.63	
1436.00	6.980	331.590	1435.29	-20.57	20.38	-6.47	40°07'48.939"N	104°46'34.853"W	2.73	
1528.00	9.530	340.430	1526.34	-32.81	32.48	-11.68	40°07'49.059"N	104°46'34.920"W	3.09	
1621.00	10.840	345.840	1617.87	-48.68	48.21	-16.40	40°07'49.214"N	104°46'34.981"W	1.74	
1713.00	12.590	349.530	1707.95	-67.04	66.46	-20.33	40°07'49.395"N	104°46'35.032"W	2.07	
1804.00	13.430	348.800	1796.61	-87.27	86.58	-24.19	40°07'49.594"N	104°46'35.081"W	0.94	
1896.00	13.380	347.570	1886.11	-108.26	107.46	-28.56	40°07'49.800"N	104°46'35.138"W	0.31	
1987.00	13.300	345.980	1974.65	-128.84	127.89	-33.36	40°07'50.002"N	104°46'35.199"W	0.41	
2079.00	11.490	348.480	2064.51	-148.21	147.14	-37.75	40°07'50.192"N	104°46'35.256"W	2.05	
2170.00	9.100	343.190	2154.04	-164.09	162.91	-41.64	40°07'50.348"N	104°46'35.306"W	2.82	
2262.00	8.020	349.010	2245.01	-177.45	176.18	-44.97	40°07'50.479"N	104°46'35.349"W	1.50	
2353.00	6.280	356.130	2335.30	-188.69	187.38	-46.52	40°07'50.590"N	104°46'35.369"W	2.14	
2445.00	5.000	6.870	2426.86	-197.68	196.38	-46.38	40°07'50.679"N	104°46'35.367"W	1.80	
2536.00	4.330	24.270	2517.56	-204.69	203.45	-44.49	40°07'50.748"N	104°46'35.343"W	1.71	
2628.00	2.200	21.710	2609.41	-209.43	208.25	-42.41	40°07'50.796"N	104°46'35.316"W	2.32	
2719.00	0.680	326.150	2700.38	-211.49	210.33	-42.07	40°07'50.816"N	104°46'35.312"W	2.09	
2810.00	0.120	346.110	2791.37	-212.04	210.87	-42.39	40°07'50.822"N	104°46'35.316"W	0.62	
2896.00	1.830	153.150	2877.36	-210.89	209.73	-41.79	40°07'50.811"N	104°46'35.308"W	2.26	
2981.00	1.630	160.520	2962.32	-208.51	207.38	-40.77	40°07'50.787"N	104°46'35.295"W	0.35	
3151.00	1.210	139.560	3132.27	-204.80	203.73	-38.80	40°07'50.751"N	104°46'35.270"W	0.39	
3236.00	2.830	141.620	3217.22	-202.42	201.40	-36.92	40°07'50.728"N	104°46'35.245"W	1.91	
3322.00	2.490	132.680	3303.12	-199.41	198.47	-34.23	40°07'50.699"N	104°46'35.211"W	0.62	
3407.00	0.800	168.190	3388.09	-197.53	196.64	-32.75	40°07'50.681"N	104°46'35.192"W	2.23	
3577.00	0.370	165.900	3558.08	-195.83	194.95	-32.37	40°07'50.664"N	104°46'35.187"W	0.25	
3918.00	0.550	211.080	3899.07	-193.38	192.48	-32.95	40°07'50.640"N	104°46'35.194"W	0.11	
4259.00	0.760	132.960	4240.05	-190.41	189.53	-32.14	40°07'50.611"N	104°46'35.184"W	0.25	
4599.00	2.130	355.160	4579.98	-195.14	194.29	-31.02	40°07'50.658"N	104°46'35.169"W	0.81	
4769.00	0.520	34.040	4749.93	-198.92	198.08	-30.86	40°07'50.695"N	104°46'35.167"W	1.03	
5025.00	1.220	20.840	5005.90	-202.38	201.59	-29.24	40°07'50.730"N	104°46'35.146"W	0.28	
5281.00	0.980	73.420	5261.86	-205.46	204.76	-26.17	40°07'50.761"N	104°46'35.107"W	0.39	
5451.00	0.840	124.880	5431.84	-205.09	204.47	-23.75	40°07'50.759"N	104°46'35.076"W	0.47	

REFERENCE WELLPATH IDENTIFICATION

Operator	KERR-MCGEE OIL & GAS ONSHORE LP	Slot	SLOT#24 3D 37N-21HZ (250'FNL & 979'FEL, SEC.21)
Area	COLORADO	Well	3D 37N-21HZ
Field	WELD COUNTY (KERR MCGEE)	Wellbore	3D 37N-21HZ AWB
Facility	SEC.21-T2N-R66W		

WELLPATH DATA (115 stations) † = interpolated/extrapolated station

MD [ft]	Inclination [°]	Azimuth [°]	TVD [ft]	Vert Sect [ft]	North [ft]	East [ft]	Latitude	Longitude	DLS ["/100ft]	Comments
5707.00	0.800	156.250	5687.82	-202.31	201.76	-21.49	40°07'50.732"N	104°46'35.047"W	0.17	
5878.00	0.900	170.900	5858.80	-199.87	199.34	-20.80	40°07'50.708"N	104°46'35.038"W	0.14	
6219.00	0.700	175.350	6199.77	-195.14	194.62	-20.21	40°07'50.661"N	104°46'35.030"W	0.06	
6559.00	0.430	224.620	6539.75	-192.18	191.64	-20.94	40°07'50.632"N	104°46'35.040"W	0.16	
6730.00	0.950	255.710	6710.74	-191.43	190.83	-22.76	40°07'50.624"N	104°46'35.063"W	0.36	
6772.00	1.490	226.020	6752.73	-190.99	190.37	-23.49	40°07'50.619"N	104°46'35.072"W	1.94	
6815.00	4.720	185.780	6795.66	-188.86	188.22	-24.07	40°07'50.598"N	104°46'35.080"W	8.63	
6857.00	8.930	182.720	6837.36	-183.89	183.24	-24.40	40°07'50.549"N	104°46'35.084"W	10.06	
6900.00	12.540	183.830	6879.60	-175.91	175.25	-24.87	40°07'50.470"N	104°46'35.090"W	8.41	
6942.00	16.600	183.550	6920.24	-165.40	164.70	-25.55	40°07'50.366"N	104°46'35.099"W	9.67	
6985.00	20.620	181.010	6960.98	-151.71	151.00	-26.06	40°07'50.230"N	104°46'35.106"W	9.53	
7028.00	24.980	179.740	7000.61	-135.06	134.34	-26.15	40°07'50.066"N	104°46'35.107"W	10.20	
7070.00	29.130	179.570	7038.01	-115.97	115.24	-26.04	40°07'49.877"N	104°46'35.105"W	9.88	
7113.00	33.370	179.400	7074.76	-93.67	92.94	-25.83	40°07'49.656"N	104°46'35.103"W	9.86	
7155.00	37.990	179.750	7108.87	-69.19	68.45	-25.66	40°07'49.414"N	104°46'35.100"W	11.01	
7198.00	43.190	180.770	7141.51	-41.24	40.48	-25.80	40°07'49.138"N	104°46'35.102"W	12.19	
7241.00	48.140	182.350	7171.55	-10.55	9.75	-26.65	40°07'48.834"N	104°46'35.113"W	11.81	
7283.00	52.110	182.700	7198.48	21.59	-22.44	-28.07	40°07'48.516"N	104°46'35.131"W	9.47	
7326.00	55.840	181.360	7223.76	56.29	-57.19	-29.30	40°07'48.173"N	104°46'35.147"W	9.03	
7369.00	59.180	178.620	7246.86	92.53	-93.45	-29.27	40°07'47.815"N	104°46'35.147"W	9.44	
7411.00	62.340	177.130	7267.37	129.17	-130.07	-27.91	40°07'47.453"N	104°46'35.129"W	8.14	
7454.00	65.720	176.430	7286.20	167.81	-168.66	-25.73	40°07'47.071"N	104°46'35.101"W	8.00	
7497.00	70.120	175.570	7302.36	207.62	-208.40	-22.95	40°07'46.679"N	104°46'35.065"W	10.40	
7539.00	74.130	176.540	7315.25	247.55	-248.27	-20.20	40°07'46.285"N	104°46'35.030"W	9.80	
7582.00	77.580	178.100	7325.76	289.23	-289.91	-18.26	40°07'45.873"N	104°46'35.005"W	8.76	
7626.00	82.830	178.490	7333.24	332.58	-333.23	-16.97	40°07'45.445"N	104°46'34.988"W	11.96	
7665.00†	85.181	179.022	7337.31	371.36	-372.01	-16.13	40°07'45.062"N	104°46'34.978"W	6.18	7" Casing Point
7698.00	87.170	179.470	7339.51	404.28	-404.93	-15.70	40°07'44.736"N	104°46'34.972"W	6.18	
7782.00	88.150	179.390	7342.94	488.19	-488.86	-14.86	40°07'43.907"N	104°46'34.961"W	1.17	
7868.00	89.930	179.390	7344.38	574.16	-574.84	-13.94	40°07'43.057"N	104°46'34.950"W	2.07	
7953.00	90.360	179.310	7344.17	659.14	-659.83	-12.98	40°07'42.217"N	104°46'34.937"W	0.51	
8124.00	90.860	178.630	7342.35	830.12	-830.79	-9.91	40°07'40.528"N	104°46'34.898"W	0.49	
8209.00	90.490	179.330	7341.35	915.11	-915.77	-8.39	40°07'39.688"N	104°46'34.878"W	0.93	
8295.00	89.840	180.270	7341.10	1001.07	-1001.77	-8.09	40°07'38.838"N	104°46'34.874"W	1.33	
8380.00	89.350	179.070	7341.70	1086.05	-1086.76	-7.60	40°07'37.998"N	104°46'34.868"W	1.52	
8465.00	89.900	179.450	7342.26	1171.03	-1171.75	-6.51	40°07'37.159"N	104°46'34.854"W	0.79	
8550.00	89.870	179.200	7342.43	1256.02	-1256.75	-5.51	40°07'36.319"N	104°46'34.841"W	0.30	
8721.00	90.330	179.270	7342.13	1426.99	-1427.73	-3.22	40°07'34.629"N	104°46'34.811"W	0.27	
8806.00	90.210	179.320	7341.73	1511.98	-1512.72	-2.18	40°07'33.789"N	104°46'34.798"W	0.15	
8977.00	90.550	178.510	7340.59	1682.96	-1683.69	1.06	40°07'32.100"N	104°46'34.756"W	0.51	
9062.00	89.380	178.540	7340.65	1767.96	-1768.66	3.25	40°07'31.260"N	104°46'34.728"W	1.38	
9232.00	91.480	179.660	7339.37	1937.93	-1938.62	5.92	40°07'29.580"N	104°46'34.694"W	1.40	
9317.00	90.300	179.780	7338.05	2022.89	-2023.61	6.34	40°07'28.741"N	104°46'34.688"W	1.40	
9403.00	89.720	179.820	7338.03	2108.86	-2109.61	6.64	40°07'27.891"N	104°46'34.685"W	0.68	
9488.00	89.590	180.300	7338.55	2193.81	-2194.60	6.55	40°07'27.051"N	104°46'34.686"W	0.59	

REFERENCE WELLPATH IDENTIFICATION

Operator	KERR-MCGEE OIL & GAS ONSHORE LP	Slot	SLOT#24 3D 37N-21HZ (250'FNL & 979'FEL, SEC.21)
Area	COLORADO	Well	3D 37N-21HZ
Field	WELD COUNTY (KERR MCGEE)	Wellbore	3D 37N-21HZ AWB
Facility	SEC.21-T2N-R66W		

WELLPATH DATA (115 stations)

MD [ft]	Inclination [°]	Azimuth [°]	TVD [ft]	Vert Sect [ft]	North [ft]	East [ft]	Latitude	Longitude	DLS [°/100ft]	Comments
9573.00	89.500	179.400	7339.22	2278.78	-2279.60	6.77	40°07'26.211"N	104°46'34.683"W	1.06	
9658.00	89.380	180.620	7340.05	2363.73	-2364.60	6.75	40°07'25.371"N	104°46'34.683"W	1.44	
9744.00	88.970	179.980	7341.29	2449.67	-2450.58	6.30	40°07'24.521"N	104°46'34.689"W	0.88	
9829.00	88.590	179.660	7343.10	2534.62	-2535.56	6.57	40°07'23.681"N	104°46'34.685"W	0.58	
9914.00	89.720	179.250	7344.35	2619.59	-2620.55	7.38	40°07'22.841"N	104°46'34.675"W	1.41	
9999.00	90.030	179.330	7344.54	2704.58	-2705.54	8.43	40°07'22.002"N	104°46'34.661"W	0.38	
10085.00	90.330	179.250	7344.27	2790.56	-2791.54	9.50	40°07'21.152"N	104°46'34.648"W	0.36	
10170.00	90.030	179.210	7344.00	2875.55	-2876.53	10.64	40°07'20.312"N	104°46'34.633"W	0.36	
10255.00	88.820	177.790	7344.85	2960.54	-2961.49	12.87	40°07'19.472"N	104°46'34.604"W	2.19	
10340.00	90.000	178.620	7345.73	3045.54	-3046.44	15.53	40°07'18.633"N	104°46'34.570"W	1.70	
10426.00	89.500	178.090	7346.11	3131.54	-3132.41	18.00	40°07'17.783"N	104°46'34.538"W	0.85	
10511.00	89.690	177.550	7346.71	3216.53	-3217.34	21.23	40°07'16.944"N	104°46'34.497"W	0.67	
10596.00	88.760	177.430	7347.86	3301.51	-3302.25	24.95	40°07'16.105"N	104°46'34.449"W	1.10	
10681.00	88.090	176.880	7350.19	3386.46	-3387.11	29.17	40°07'15.266"N	104°46'34.395"W	1.02	
10767.00	88.150	176.760	7353.01	3472.39	-3472.93	33.94	40°07'14.418"N	104°46'34.333"W	0.16	
10852.00	88.460	177.550	7355.53	3557.34	-3557.79	38.15	40°07'13.580"N	104°46'34.279"W	1.00	
10937.00	88.720	177.100	7357.62	3642.30	-3642.67	42.12	40°07'12.741"N	104°46'34.228"W	0.61	
11023.00	89.810	178.070	7358.72	3728.28	-3728.59	45.74	40°07'11.892"N	104°46'34.181"W	1.70	
11108.00	88.730	177.460	7359.81	3813.27	-3813.51	49.06	40°07'11.052"N	104°46'34.139"W	1.46	
11278.00	89.250	179.400	7362.80	3983.23	-3983.42	53.71	40°07'09.373"N	104°46'34.079"W	1.18	
11449.00	89.190	179.020	7365.13	4154.20	-4154.38	56.07	40°07'07.684"N	104°46'34.048"W	0.22	
11534.00	89.780	178.860	7365.89	4239.19	-4239.36	57.64	40°07'06.844"N	104°46'34.028"W	0.72	
11704.00	90.520	179.320	7365.45	4409.17	-4409.34	60.34	40°07'05.164"N	104°46'33.993"W	0.51	
11782.00	90.580	178.890	7364.70	4487.15	-4487.33	61.56	40°07'04.394"N	104°46'33.978"W	0.56	Last BHI MWD+IFR Surveys
11839.00	90.580	178.890	7364.12	4544.15	-4544.31	62.67	40°07'03.831"N	104°46'33.963"W	0.00	Projection to Bit

HOLE & CASING SECTIONS - Ref Wellbore: 3D 37N-21HZ AWB Ref Wellpath: 3D 37N-21HZ AWP

String/Diameter	Start MD [ft]	End MD [ft]	Interval [ft]	Start TVD [ft]	End TVD [ft]	Start N/S [ft]	Start E/W [ft]	End N/S [ft]	End E/W [ft]
13.5in Open Hole	17.00	1068.00	1051.00	17.00	1067.97	0.00	0.00	3.68	-0.41
9.625in Casing Surface	17.00	1058.00	1041.00	17.00	1057.98	0.00	0.00	3.62	-0.37
8.75in Open Hole	1068.00	7675.00	6607.00	1067.97	7338.10	3.68	-0.41	-381.98	-15.97
7in Casing Intermediate	17.00	7665.00	7648.00	17.00	7337.31	0.00	0.00	-372.01	-16.13
6.125in Open Hole	7665.00	11839.00	4174.00	7337.31	7364.12	-372.01	-16.13	-4544.31	62.67

REFERENCE WELLPATH IDENTIFICATION			
Operator	KERR-MCGEE OIL & GAS ONSHORE LP	Slot	SLOT#24 3D 37N-21HZ (250'FNL & 979'FEL, SEC.21)
Area	COLORADO	Well	3D 37N-21HZ
Field	WELD COUNTY (KERR MCGEE)	Wellbore	3D 37N-21HZ AWB
Facility	SEC.21-T2N-R66W		

TARGETS									
Name	MD [ft]	TVD [ft]	North [ft]	East [ft]	Grid East [US ft]	Grid North [US ft]	Latitude	Longitude	Shape
3D 37N-21HZ LANDBOX		0.00	0.00	0.00	3202350.82	1291103.15	40°07'48.738"N	104°46'34.770"W	polygon
SEC.21-T2N-R66W HARDLINES (460' SETBACKS)		0.00	0.40	29.90	3202380.72	1291103.80	40°07'48.742"N	104°46'34.385"W	polygon
SEC.21-T2N-R66W SECTION LINES		0.00	0.40	29.90	3202380.72	1291103.80	40°07'48.742"N	104°46'34.385"W	polygon
3D 37N-21HZ BHL (460'FSL & 885'FEL, SEC.21) REV-2		7336.00	-4569.67	89.50	3202477.61	1286534.55	40°07'03.580"N	104°46'33.618"W	point
3D 37N-21HZ BHL ON PLAT (460'FSL & 1010'FEL, SEC.21) REV-1		7336.00	-4569.67	-35.50	3202352.61	1286533.53	40°07'03.580"N	104°46'35.227"W	point

WELLPATH COMPOSITION - Ref Wellbore: 3D 37N-21HZ AWB Ref Wellpath: 3D 37N-21HZ AWP				
Start MD [ft]	End MD [ft]	Positional Uncertainty Model	Log Name/Comment	Wellbore
17.00	970.00	Generic gyro - continuous (Standard)	MS ENERGY SERVICES GYRO SURVEYS <117-970>	3D 37N-21HZ AWB
970.00	7626.00	NaviTrak (MAGCORR,IFR)	BHI MWD+IFR SURVEYS 8 3/4" HOLE <1162-7626	3D 37N-21HZ AWB
7626.00	11782.00	NaviTrak (MAGCORR,IFR)	BHI MWD+IFR SURVEYS 6 1/8" HOLE <7698-11023>	3D 37N-21HZ AWB
11782.00	11839.00	Blind Drilling (std)	Projection to bit	3D 37N-21HZ AWB

Actual Wellpath Report

3D 37N-21HZ AWP

Page 6 of 6

REFERENCE WELLPATH IDENTIFICATION

Operator	KERR-MCGEE OIL & GAS ONSHORE LP	Slot	SLOT#24 3D 37N-21HZ (250'FNL & 979'FEL, SEC.21)
Area	COLORADO	Well	3D 37N-21HZ
Field	WELD COUNTY (KERR MCGEE)	Wellbore	3D 37N-21HZ AWB
Facility	SEC.21-T2N-R66W		

WELLPATH COMMENTS

MD [ft]	Inclination [°]	Azimuth [°]	TVD [ft]	Comment
17.00	0.000	77.150	17.00	Tie-On
117.00	0.580	77.150	117.00	Begin GYRO Surveys
970.00	0.400	285.080	969.98	Tie-Into GYRO Surveys
1162.00	0.600	350.190	1161.97	Begin BHI MWD+IFR Surveys
7665.00	85.181	179.022	7337.31	7" Casing Point
11782.00	90.580	178.890	7364.70	Last BHI MWD+IFR Surveys
11839.00	90.580	178.890	7364.12	Projection to Bit