

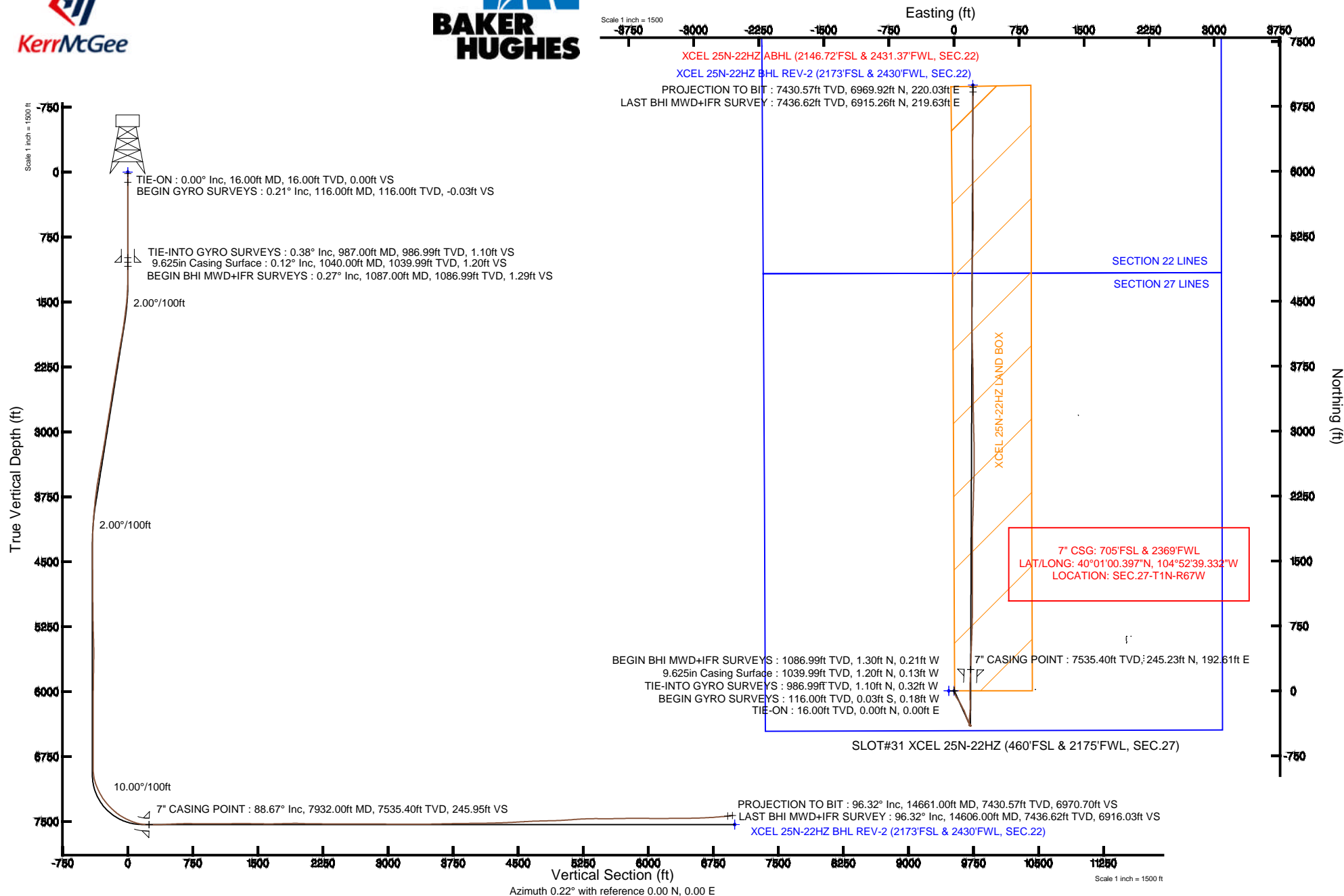
KERR-MCGEE OIL & GAS ONSHORE LP

Location: COLORADO Slot: SLOT#31 XCEL 25N-22HZ (460'FSL & 2175'FWL, SEC.27)
 Field: WELD COUNTY (KERR MCGEE) Well: XCEL 25N-22HZ
 Facility: SEC.27-T1N-R67W Wellbore: XCEL 25N-22HZ PWB



Plot reference wellpath is XCEL 25N-22HZ (REV-A.1) PWP

True vertical depths are referenced to XTREME 24 (16' RKB) (RKB)	Grid System: NAD83 / Lambert Colorado SP, Northern Zone (501), US feet
Measured depths are referenced to XTREME 24 (16' RKB) (RKB)	North Reference: True north
XTREME 24 (16' RKB) (RKB) to Mean Sea Level: 5053 feet	Scale: True distance
Mean Sea Level to Mud line (At Slot: SLOT#31 XCEL 25N-22HZ (460'FSL & 2175'FWL, SEC.27)): 0 feet	Depths are in feet
Coordinates are in feet referenced to Slot	Created by: wiljef02 on 1/27/2014





Actual Wellpath Report

XCEL 25N-22HZ AWP

Page 1 of 6



REFERENCE WELLPATH IDENTIFICATION

Operator	KERR-MCGEE OIL & GAS ONSHORE LP	Slot	SLOT#31 XCEL 25N-22HZ (460'FSL & 2175'FWL, SEC.27)
Area	COLORADO	Well	XCEL 25N-22HZ
Field	WELD COUNTY (KERR MCGEE)	Wellbore	XCEL 25N-22HZ AWB
Facility	SEC.27-T1N-R67W		

REPORT SETUP INFORMATION

Projection System	NAD83 / Lambert Colorado SP, Northern Zone (501), US feet	Software System	WellArchitect® 4.0.0
North Reference	True	User	Wilsjef02
Scale	0.999965	Report Generated	1/27/2014 at 09:13:08
Convergence at slot	n/a	Database/Source file	WellArchitectDB/XCEL_25N-22HZ_AWB.xml

WELLPATH LOCATION

	Local coordinates		Grid coordinates		Geographic coordinates	
	North[ft]	East[ft]	Easting[US ft]	Northing[US ft]	Latitude	Longitude
Slot Location	-3652.37	1011.15	3174134.53	1249323.51	40°00'57.974"N	104°52'41.808"W
Facility Reference Pt			3173097.99	1252968.61	40°01'34.068"N	104°52'54.804"W
Field Reference Pt			3197771.84	1268891.29	40°04'09.600"N	104°47'36.000"W

WELLPATH DATUM

Calculation method	Minimum curvature	XTREME 24 (16' RKB) (RKB) to Facility Vertical Datum	5053.00ft
Horizontal Reference Pt	Slot	XTREME 24 (16' RKB) (RKB) to Mean Sea Level	5053.00ft
Vertical Reference Pt	XTREME 24 (16' RKB) (RKB)	XTREME 24 (16' RKB) (RKB) to Mud Line at Slot (SLOT#31 XCEL 25N-22HZ (460'FSL & 2175'FWL, SEC.27))	5053.00ft
MD Reference Pt	XTREME 24 (16' RKB) (RKB)	Section Origin	N 0.00, E 0.00 ft
Field Vertical Reference	Mean Sea Level	Section Azimuth	1.81°



Actual Wellpath Report

XCEL 25N-22HZ AWP

Page 2 of 6



REFERENCE WELLPATH IDENTIFICATION

Operator	KERR-MCGEE OIL & GAS ONSHORE LP	Slot	SLOT#31 XCEL 25N-22HZ (460'FSL & 2175'FWL, SEC.27)
Area	COLORADO	Well	XCEL 25N-22HZ
Field	WELD COUNTY (KERR MCGEE)	Wellbore	XCEL 25N-22HZ AWB
Facility	SEC.27-T1N-R67W		

WELLPATH DATA (127 stations) † = interpolated/extrapolated station

MD [ft]	Inclination [°]	Azimuth [°]	TVD [ft]	Vert Sect [ft]	North [ft]	East [ft]	Latitude	Longitude	DLS [°/100ft]	Comments
0.00†	0.000	260.810	0.00	0.00	0.00	0.00	40°00'57.974"N	104°52'41.808"W	0.00	
16.00	0.000	260.810	16.00	0.00	0.00	0.00	40°00'57.974"N	104°52'41.808"W	0.00	TIE-ON
116.00	0.210	260.810	116.00	-0.03	-0.03	-0.18	40°00'57.974"N	104°52'41.810"W	0.21	BEGIN GYRO SURVEYS
216.00	0.320	97.120	216.00	-0.10	-0.09	-0.08	40°00'57.973"N	104°52'41.809"W	0.52	
316.00	0.320	51.060	316.00	0.06	0.05	0.41	40°00'57.974"N	104°52'41.803"W	0.25	
416.00	0.320	9.290	416.00	0.52	0.50	0.67	40°00'57.979"N	104°52'41.799"W	0.23	
516.00	0.280	284.220	516.00	0.85	0.83	0.48	40°00'57.982"N	104°52'41.802"W	0.41	
616.00	0.450	283.740	615.99	0.98	0.99	-0.14	40°00'57.984"N	104°52'41.810"W	0.17	
716.00	0.370	276.810	715.99	1.09	1.12	-0.84	40°00'57.985"N	104°52'41.819"W	0.09	
816.00	0.210	119.810	815.99	1.03	1.07	-1.00	40°00'57.985"N	104°52'41.821"W	0.57	
916.00	0.200	76.240	915.99	1.00	1.02	-0.67	40°00'57.984"N	104°52'41.817"W	0.15	
987.00	0.380	75.750	986.99	1.09	1.10	-0.32	40°00'57.985"N	104°52'41.812"W	0.25	TIE-INTO GYRO SURVEYS
1087.00	0.270	297.610	1086.99	1.29	1.30	-0.21	40°00'57.987"N	104°52'41.811"W	0.61	BEGIN BHI MWD+IFR SURVEYS
1181.00	0.260	274.360	1180.99	1.39	1.41	-0.62	40°00'57.988"N	104°52'41.816"W	0.11	
1275.00	1.550	169.600	1274.98	0.16	0.18	-0.60	40°00'57.976"N	104°52'41.816"W	1.74	
1369.00	3.150	166.300	1368.89	-3.57	-3.58	0.24	40°00'57.939"N	104°52'41.805"W	1.71	
1463.00	4.800	167.310	1462.66	-9.87	-9.93	1.71	40°00'57.876"N	104°52'41.786"W	1.76	
1557.00	6.850	169.280	1556.17	-19.15	-19.27	3.62	40°00'57.784"N	104°52'41.761"W	2.19	
1652.00	7.830	156.250	1650.40	-30.52	-30.76	7.28	40°00'57.670"N	104°52'41.714"W	2.03	
1746.00	9.530	155.770	1743.32	-43.29	-43.72	13.05	40°00'57.542"N	104°52'41.640"W	1.81	
1840.00	10.440	151.280	1835.90	-57.62	-58.29	20.34	40°00'57.398"N	104°52'41.547"W	1.27	
1935.00	11.550	150.380	1929.15	-73.15	-74.10	29.18	40°00'57.242"N	104°52'41.433"W	1.18	
2027.00	11.440	148.530	2019.31	-88.63	-89.89	38.49	40°00'57.086"N	104°52'41.313"W	0.42	
2119.00	11.160	147.550	2109.52	-103.62	-105.19	48.03	40°00'56.935"N	104°52'41.191"W	0.37	
2211.00	10.880	148.490	2199.83	-118.23	-120.10	57.35	40°00'56.787"N	104°52'41.071"W	0.36	
2303.00	10.700	148.580	2290.20	-132.63	-134.79	66.34	40°00'56.642"N	104°52'40.955"W	0.20	
2395.00	10.280	148.670	2380.66	-146.65	-149.09	75.06	40°00'56.501"N	104°52'40.843"W	0.46	
2487.00	10.820	154.560	2471.11	-161.20	-163.90	83.04	40°00'56.354"N	104°52'40.741"W	1.31	
2579.00	9.710	153.280	2561.64	-175.70	-178.63	90.23	40°00'56.209"N	104°52'40.648"W	1.23	
2670.00	10.110	154.810	2651.28	-189.55	-192.71	97.08	40°00'56.070"N	104°52'40.560"W	0.53	
2762.00	11.280	150.390	2741.68	-204.43	-207.84	104.97	40°00'55.920"N	104°52'40.459"W	1.55	
2854.00	10.150	149.820	2832.07	-218.98	-222.68	113.49	40°00'55.773"N	104°52'40.349"W	1.23	
2946.00	9.880	160.340	2922.68	-233.21	-237.12	120.22	40°00'55.631"N	104°52'40.263"W	2.01	
3038.00	9.080	160.970	3013.42	-247.34	-251.41	125.24	40°00'55.489"N	104°52'40.198"W	0.88	
3130.00	9.740	157.130	3104.19	-261.19	-265.45	130.63	40°00'55.351"N	104°52'40.129"W	0.99	
3222.00	10.280	162.600	3194.79	-276.02	-280.45	136.11	40°00'55.203"N	104°52'40.059"W	1.19	
3314.00	11.330	161.430	3285.15	-292.24	-296.85	141.45	40°00'55.040"N	104°52'39.990"W	1.17	
3406.00	10.050	163.050	3375.56	-308.31	-313.10	146.66	40°00'54.880"N	104°52'39.923"W	1.43	
3498.00	10.910	156.660	3466.02	-323.80	-328.77	152.45	40°00'54.725"N	104°52'39.849"W	1.57	
3590.00	9.890	157.260	3556.51	-338.86	-344.05	158.96	40°00'54.574"N	104°52'39.765"W	1.11	
3682.00	8.690	159.120	3647.30	-352.46	-357.83	164.49	40°00'54.438"N	104°52'39.694"W	1.34	
3775.00	8.640	142.270	3739.26	-364.33	-369.92	171.27	40°00'54.318"N	104°52'39.607"W	2.72	
3868.00	7.540	141.850	3831.33	-374.40	-380.25	179.31	40°00'54.216"N	104°52'39.503"W	1.18	
3962.00	6.220	143.420	3924.65	-383.12	-389.19	186.16	40°00'54.128"N	104°52'39.415"W	1.42	
4056.00	5.260	143.650	4018.18	-390.50	-396.75	191.75	40°00'54.053"N	104°52'39.344"W	1.02	

REFERENCE WELLPATH IDENTIFICATION

Operator	KERR-MCGEE OIL & GAS ONSHORE LP	Slot	SLOT#31 XCEL 25N-22HZ (460'FSL & 2175'FWL, SEC.27)
Area	COLORADO	Well	XCEL 25N-22HZ
Field	WELD COUNTY (KERR MCGEE)	Wellbore	XCEL 25N-22HZ AWB
Facility	SEC.27-T1N-R67W		

WELLPATH DATA (127 stations) † = interpolated/extrapolated station

MD [ft]	Inclination [°]	Azimuth [°]	TVD [ft]	Vert Sect [ft]	North [ft]	East [ft]	Latitude	Longitude	DLS [°/100ft]	Comments
4149.00	3.080	139.230	4110.93	-395.69	-402.07	195.91	40°00'54.001"N	104°52'39.290"W	2.37	
4244.00	2.360	147.450	4205.82	-399.18	-405.65	198.62	40°00'53.965"N	104°52'39.255"W	0.86	
4337.00	0.470	77.790	4298.79	-400.67	-407.19	200.03	40°00'53.950"N	104°52'39.237"W	2.41	
4618.00	1.110	285.290	4579.78	-399.76	-406.23	198.53	40°00'53.960"N	104°52'39.256"W	0.55	
5044.00	1.550	288.200	5005.66	-397.17	-403.34	189.08	40°00'53.988"N	104°52'39.378"W	0.10	
5470.00	1.910	338.400	5431.49	-389.03	-394.94	180.99	40°00'54.071"N	104°52'39.482"W	0.35	
5555.00	0.810	15.590	5516.47	-387.15	-393.04	180.63	40°00'54.090"N	104°52'39.486"W	1.60	
5640.00	1.090	162.490	5601.46	-387.33	-393.23	181.03	40°00'54.088"N	104°52'39.481"W	2.14	
6067.00	0.590	213.090	6028.42	-393.04	-398.95	181.05	40°00'54.031"N	104°52'39.481"W	0.20	
6492.00	0.280	289.990	6453.41	-394.58	-400.43	178.88	40°00'54.017"N	104°52'39.509"W	0.14	
6833.00	0.500	267.450	6794.40	-394.44	-400.21	176.61	40°00'54.019"N	104°52'39.538"W	0.08	
6919.00	0.590	259.360	6880.40	-394.56	-400.31	175.80	40°00'54.018"N	104°52'39.548"W	0.14	
7004.00	7.630	0.100	6965.15	-389.01	-394.74	175.38	40°00'54.073"N	104°52'39.554"W	9.13	
7046.00	13.360	3.790	7006.43	-381.36	-387.10	175.71	40°00'54.149"N	104°52'39.550"W	13.73	
7089.00	17.330	0.440	7047.89	-369.99	-375.73	176.09	40°00'54.261"N	104°52'39.545"W	9.46	
7132.00	20.800	1.480	7088.52	-355.95	-361.69	176.33	40°00'54.400"N	104°52'39.542"W	8.11	
7174.00	24.680	2.700	7127.25	-339.72	-345.47	176.94	40°00'54.560"N	104°52'39.534"W	9.31	
7217.00	27.920	4.430	7165.80	-320.68	-326.46	178.14	40°00'54.748"N	104°52'39.518"W	7.74	
7259.00	30.030	4.250	7202.54	-300.36	-306.18	179.68	40°00'54.948"N	104°52'39.499"W	5.03	
7302.00	34.150	5.080	7238.96	-277.55	-283.42	181.55	40°00'55.173"N	104°52'39.475"W	9.64	
7345.00	38.660	4.560	7273.56	-252.07	-257.99	183.68	40°00'55.424"N	104°52'39.447"W	10.51	
7387.00	41.840	3.570	7305.61	-224.95	-230.93	185.60	40°00'55.692"N	104°52'39.423"W	7.72	
7430.00	45.470	3.130	7336.72	-195.29	-201.30	187.33	40°00'55.985"N	104°52'39.400"W	8.47	
7473.00	48.060	1.190	7366.17	-163.97	-170.00	188.50	40°00'56.294"N	104°52'39.385"W	6.86	
7515.00	50.400	357.500	7393.60	-132.20	-138.20	188.12	40°00'56.608"N	104°52'39.390"W	8.68	
7558.00	55.140	357.220	7419.61	-98.08	-104.01	186.54	40°00'56.946"N	104°52'39.410"W	11.04	
7600.00	60.070	358.110	7442.10	-62.72	-68.59	185.10	40°00'57.296"N	104°52'39.429"W	11.87	
7643.00	61.770	359.840	7463.00	-25.19	-31.02	184.43	40°00'57.667"N	104°52'39.438"W	5.29	
7686.00	65.100	0.750	7482.23	13.26	7.43	184.64	40°00'58.047"N	104°52'39.435"W	7.97	
7728.00	68.860	0.470	7498.65	51.90	46.08	185.05	40°00'58.429"N	104°52'39.430"W	8.97	
7771.00	72.550	1.990	7512.86	92.47	86.65	185.92	40°00'58.830"N	104°52'39.418"W	9.21	
7813.00	77.270	3.020	7523.79	133.01	127.15	187.70	40°00'59.230"N	104°52'39.396"W	11.48	
7856.00	82.780	2.900	7531.24	175.33	169.42	189.89	40°00'59.648"N	104°52'39.367"W	12.82	
7887.00	87.440	1.870	7533.88	206.21	200.28	191.17	40°00'59.953"N	104°52'39.351"W	15.39	
7932.00†	88.670	1.813	7535.40	251.18	245.23	192.61	40°01'00.397"N	104°52'39.332"W	2.74	7" CASING POINT
8045.00	91.760	1.670	7534.98	364.17	358.16	196.05	40°01'01.513"N	104°52'39.288"W	2.74	
8136.00	92.980	2.020	7531.22	455.09	449.03	198.98	40°01'02.411"N	104°52'39.251"W	1.39	
8228.00	92.310	2.350	7526.97	546.99	540.87	202.48	40°01'03.319"N	104°52'39.206"W	0.81	
8320.00	91.320	2.040	7524.06	638.94	632.75	206.00	40°01'04.227"N	104°52'39.160"W	1.13	
8412.00	88.980	1.730	7523.82	730.93	724.70	209.03	40°01'05.136"N	104°52'39.121"W	2.57	
8596.00	89.780	0.070	7525.81	914.89	908.65	211.92	40°01'06.954"N	104°52'39.084"W	1.00	
8783.00	90.700	0.140	7525.03	1101.80	1095.65	212.26	40°01'08.802"N	104°52'39.080"W	0.49	
8970.00	90.580	0.370	7522.94	1288.72	1282.64	213.09	40°01'10.649"N	104°52'39.069"W	0.14	
9063.00	89.040	359.690	7523.24	1381.67	1375.63	213.14	40°01'11.568"N	104°52'39.068"W	1.81	
9252.00	89.070	359.730	7526.36	1570.52	1564.60	212.18	40°01'13.436"N	104°52'39.081"W	0.03	



Actual Wellpath Report

XCEL 25N-22HZ AWP

Page 4 of 6



REFERENCE WELLPATH IDENTIFICATION

Operator	KERR-MCGEE OIL & GAS ONSHORE LP	Slot	SLOT#31 XCEL 25N-22HZ (460'FSL & 2175'FWL, SEC.27)
Area	COLORADO	Well	XCEL 25N-22HZ
Field	WELD COUNTY (KERR MCGEE)	Wellbore	XCEL 25N-22HZ AWB
Facility	SEC.27-T1N-R67W		

WELLPATH DATA (127 stations)

MD [ft]	Inclination [°]	Azimuth [°]	TVD [ft]	Vert Sect [ft]	North [ft]	East [ft]	Latitude	Longitude	DLS [°/100ft]	Comments
9439.00	92.030	0.170	7524.57	1757.39	1751.57	212.02	40°01'15.284"N	104°52'39.083"W	1.60	
9533.00	91.010	0.930	7522.07	1851.33	1845.54	212.92	40°01'16.212"N	104°52'39.071"W	1.35	
9618.00	90.090	2.660	7521.26	1936.33	1930.49	215.58	40°01'17.052"N	104°52'39.037"W	2.31	
9703.00	87.780	1.680	7522.84	2021.30	2015.40	218.80	40°01'17.891"N	104°52'38.996"W	2.95	
9873.00	90.030	1.590	7526.09	2191.26	2185.29	223.65	40°01'19.570"N	104°52'38.933"W	1.32	
9958.00	88.700	1.340	7527.03	2276.25	2270.26	225.82	40°01'20.409"N	104°52'38.905"W	1.59	
10128.00	90.860	1.780	7527.68	2446.24	2440.18	230.45	40°01'22.089"N	104°52'38.846"W	1.30	
10214.00	89.810	1.010	7527.18	2532.23	2526.15	232.55	40°01'22.938"N	104°52'38.819"W	1.51	
10384.00	89.780	359.850	7527.79	2702.18	2696.14	233.82	40°01'24.618"N	104°52'38.802"W	0.68	
10555.00	89.840	358.690	7528.35	2873.01	2867.13	231.64	40°01'26.308"N	104°52'38.830"W	0.68	
10725.00	89.380	358.500	7529.51	3042.74	3037.07	227.48	40°01'27.987"N	104°52'38.884"W	0.29	
10981.00	90.030	359.590	7530.83	3298.43	3293.03	223.21	40°01'30.517"N	104°52'38.939"W	0.50	
11236.00	91.350	359.620	7527.76	3553.22	3548.00	221.45	40°01'33.036"N	104°52'38.961"W	0.52	
11492.00	90.790	358.520	7522.98	3808.88	3803.91	217.30	40°01'35.565"N	104°52'39.015"W	0.48	
11748.00	90.520	358.520	7520.05	4064.44	4059.81	210.68	40°01'38.094"N	104°52'39.100"W	0.11	
12003.00	92.210	359.490	7513.98	4319.05	4314.69	206.26	40°01'40.613"N	104°52'39.157"W	0.76	
12259.00	93.430	359.870	7501.38	4574.56	4570.37	204.83	40°01'43.140"N	104°52'39.175"W	0.50	
12344.00	92.680	0.750	7496.85	4659.40	4655.25	205.29	40°01'43.978"N	104°52'39.169"W	1.36	
12429.00	91.200	1.070	7493.97	4744.34	4740.18	206.64	40°01'44.818"N	104°52'39.152"W	1.78	
12600.00	91.790	1.860	7489.51	4915.28	4911.07	211.01	40°01'46.507"N	104°52'39.095"W	0.58	
12770.00	93.960	1.900	7480.99	5085.06	5080.75	216.58	40°01'48.183"N	104°52'39.024"W	1.28	
12855.00	94.140	0.910	7474.98	5169.84	5165.51	218.66	40°01'49.021"N	104°52'38.997"W	1.18	
12940.00	92.690	1.370	7469.92	5254.68	5250.34	220.34	40°01'49.859"N	104°52'38.975"W	1.79	
13026.00	91.320	0.300	7466.91	5340.61	5336.28	221.60	40°01'50.709"N	104°52'38.959"W	2.02	
13111.00	89.320	0.120	7466.44	5425.57	5421.27	221.91	40°01'51.549"N	104°52'38.955"W	2.36	
13195.00	89.930	359.690	7466.99	5509.52	5505.27	221.77	40°01'52.379"N	104°52'38.957"W	0.89	
13280.00	90.770	359.270	7466.47	5594.45	5590.26	221.00	40°01'53.219"N	104°52'38.967"W	1.10	
13451.00	91.410	359.600	7463.21	5765.27	5761.22	219.31	40°01'54.908"N	104°52'38.989"W	0.42	
13536.00	90.030	359.360	7462.15	5850.19	5846.21	218.54	40°01'55.748"N	104°52'38.999"W	1.65	
13705.00	88.730	359.820	7463.97	6019.05	6015.19	217.33	40°01'57.418"N	104°52'39.014"W	0.82	
13876.00	90.950	359.190	7464.45	6189.90	6186.17	215.85	40°01'59.108"N	104°52'39.033"W	1.35	
13961.00	89.960	0.510	7463.78	6274.85	6271.17	215.63	40°01'59.947"N	104°52'39.036"W	1.94	
14045.00	90.580	0.310	7463.38	6358.82	6355.16	216.23	40°02'00.778"N	104°52'39.028"W	0.78	
14215.00	91.260	0.490	7460.65	6528.75	6525.14	217.42	40°02'02.457"N	104°52'39.013"W	0.41	
14385.00	92.930	0.200	7454.44	6698.57	6695.01	218.44	40°02'04.136"N	104°52'39.000"W	1.00	
14606.00	96.320	0.420	7436.62	6918.75	6915.26	219.63	40°02'06.313"N	104°52'38.984"W	1.54	LAST BHI MWD+IFR SURVEY
14661.00	96.320	0.420	7430.57	6973.39	6969.92	220.03	40°02'06.853"N	104°52'38.979"W	0.00	PROJECTION TO BIT



Actual Wellpath Report

XCEL 25N-22HZ AWP

Page 5 of 6



REFERENCE WELLPATH IDENTIFICATION

Operator	KERR-MCGEE OIL & GAS ONSHORE LP	Slot	SLOT#31 XCEL 25N-22HZ (460'FSL & 2175'FWL, SEC.27)
Area	COLORADO	Well	XCEL 25N-22HZ
Field	WELD COUNTY (KERR MCGEE)	Wellbore	XCEL 25N-22HZ AWB
Facility	SEC.27-T1N-R67W		

HOLE & CASING SECTIONS - Ref Wellbore: XCEL 25N-22HZ AWB Ref Wellpath: XCEL 25N-22HZ AWP

String/Diameter	Start MD [ft]	End MD [ft]	Interval [ft]	Start TVD [ft]	End TVD [ft]	Start N/S [ft]	Start E/W [ft]	End N/S [ft]	End E/W [ft]
13.5in Open Hole	16.00	1040.00	1024.00	16.00	1039.99	0.00	0.00	1.20	-0.13
9.625in Casing Surface	16.00	1040.00	1024.00	16.00	1039.99	0.00	0.00	1.20	-0.13
8.75in Open Hole	1040.00	7945.00	6905.00	1039.99	7535.67	1.20	-0.13	258.22	193.02
7in Casing Intermediate	16.00	7932.00	7916.00	16.00	7535.40	0.00	0.00	245.23	192.61
6.125in Open Hole	7932.00	14661.00	6729.00	7535.40	7430.57	245.23	192.61	6969.92	220.03

TARGETS

Name	MD [ft]	TVD [ft]	North [ft]	East [ft]	Grid East [US ft]	Grid North [US ft]	Latitude	Longitude	Shape
SEC.22-T1N-R67W SECTION LINES		0.00	0.00	-59.91	3174074.63	1249323.09	40°00'57.974"N	104°52'42.578"W	polygon
SEC.27-T1N-R67W SECTION LINES		0.00	0.00	-59.91	3174074.63	1249323.09	40°00'57.974"N	104°52'42.578"W	polygon
XCEL 25N-22HZ BHL ON PLAT REV-1 (2173'FSL & 2530'FWL, SEC.22)		7534.00	6996.20	318.66	3174404.12	1256321.51	40°02'07.112"N	104°52'37.711"W	point
XCEL 25N-22HZ BHL REV-2 (2173'FSL & 2430'FWL, SEC.22)		7534.00	6996.20	218.66	3174304.13	1256320.82	40°02'07.112"N	104°52'38.997"W	point
XCEL 25N-22HZ LAND BOX		7600.00	0.00	0.00	3174134.53	1249323.51	40°00'57.974"N	104°52'41.808"W	polygon

WELLPATH COMPOSITION - Ref Wellbore: XCEL 25N-22HZ AWB Ref Wellpath: XCEL 25N-22HZ AWP

Start MD [ft]	End MD [ft]	Positional Uncertainty Model	Log Name/Comment	Wellbore
16.00	987.00	Generic gyro - continuous (Standard)	VES GYRODATA SURVEYS <100-987>	XCEL 25N-22HZ AWB
987.00	7887.00	NaviTrak (MAGCORR,IFR)	BHI MWD+IFR SURVEYS 8 3/4" HOLE <1087-7887>	XCEL 25N-22HZ AWB
7887.00	14606.00	NaviTrak (MAGCORR,IFR)	BHI MWD+IFR SURVEYS 6 1/8" HOLE <8045-14606>	XCEL 25N-22HZ AWB
14606.00	14661.00	Blind Drilling (std)	Projection to bit	XCEL 25N-22HZ AWB



Actual Wellpath Report

XCEL 25N-22HZ AWP

Page 6 of 6



REFERENCE WELLPATH IDENTIFICATION

Operator	KERR-MCGEE OIL & GAS ONSHORE LP	Slot	SLOT#31 XCEL 25N-22HZ (460'FSL & 2175'FWL, SEC.27)
Area	COLORADO	Well	XCEL 25N-22HZ
Field	WELD COUNTY (KERR MCGEE)	Wellbore	XCEL 25N-22HZ AWB
Facility	SEC.27-T1N-R67W		

WELLPATH COMMENTS

MD [ft]	Inclination [°]	Azimuth [°]	TVD [ft]	Comment
16.00	0.000	260.810	16.00	TIE-ON
116.00	0.210	260.810	116.00	BEGIN GYRO SURVEYS
987.00	0.380	75.750	986.99	TIE-INTO GYRO SURVEYS
1087.00	0.270	297.610	1086.99	BEGIN BHI MWD+IFR SURVEYS
7932.00	88.670	1.813	7535.40	7" CASING POINT
14606.00	96.320	0.420	7436.62	LAST BHI MWD+IFR SURVEY
14661.00	96.320	0.420	7430.57	PROJECTION TO BIT