

**ANADARKO PETROLEUM CORP - EBUS  
DO NOT MAIL - PO BOX 4995  
THE WOODLANDS, Texas**

Gittlein 4N-28HZ

**MAJORS 42**

## **Post Job Summary**

# **Cement Surface Casing**

Date Prepared: 9/7/2013  
Version: 1

Service Supervisor: PICKELL, CHRISTOPHER

Submitted by: LANSDALE, JUSTIN

**HALLIBURTON**

# HALLIBURTON

## Wellbore Geometry

---

Job Tubulars					MD		Shoe Joint Length ft
Type	Description	Size in	ID in	Wt lbm/ft	Top ft	Bottom ft	
Casing	9 5/8" Surface Casing	9.63	8.921	36.00	0.00	1,306.00	40.00
Open Hole Section	13 1/2" Open Hole Section		13.500		0.00	1,316.00	0.00

# HALLIBURTON

## Pumping Schedule

Stage /Plug #	Fluid #	Fluid Type	Fluid Name	Surface Density lbm/gal	Avg Rate bbl/min	Surface Volume	Downhole Volume
1	1	Spacer	Fresh Water Spacer	8.33	1.00	10.0 bbl	10.0 bbl
1	2	Spacer	MUD FLUSH III	8.40	2.00	12.0 bbl	12.0 bbl
1	3	Spacer	Fresh water Spacer	8.33	2.00	10.0 bbl	10.0 bbl
1	4	Cement Slurry	SwiftCem B2	14.20	5.00	550.0 sacks	550.0 sacks

## Fluids Pumped

**Stage/Plug # 1 Fluid 1:** Fresh Water Spacer  
DUMMY MUD / FLUSH / SPACER SBC MATERIAL

Fluid Density: 8.33 lbm/gal  
Fluid Volume: 10.00 bbl

**Stage/Plug # 1 Fluid 2:** MUD FLUSH III  
MUD FLUSH III - SBM (528788)

Fluid Density: 8.40 lbm/gal  
Fluid Volume: 12.00 bbl

**Stage/Plug # 1 Fluid 3:** Fresh water Spacer  
DUMMY MUD / FLUSH / SPACER SBC MATERIAL

Fluid Density: 8.33 lbm/gal  
Fluid Volume: 10.00 bbl

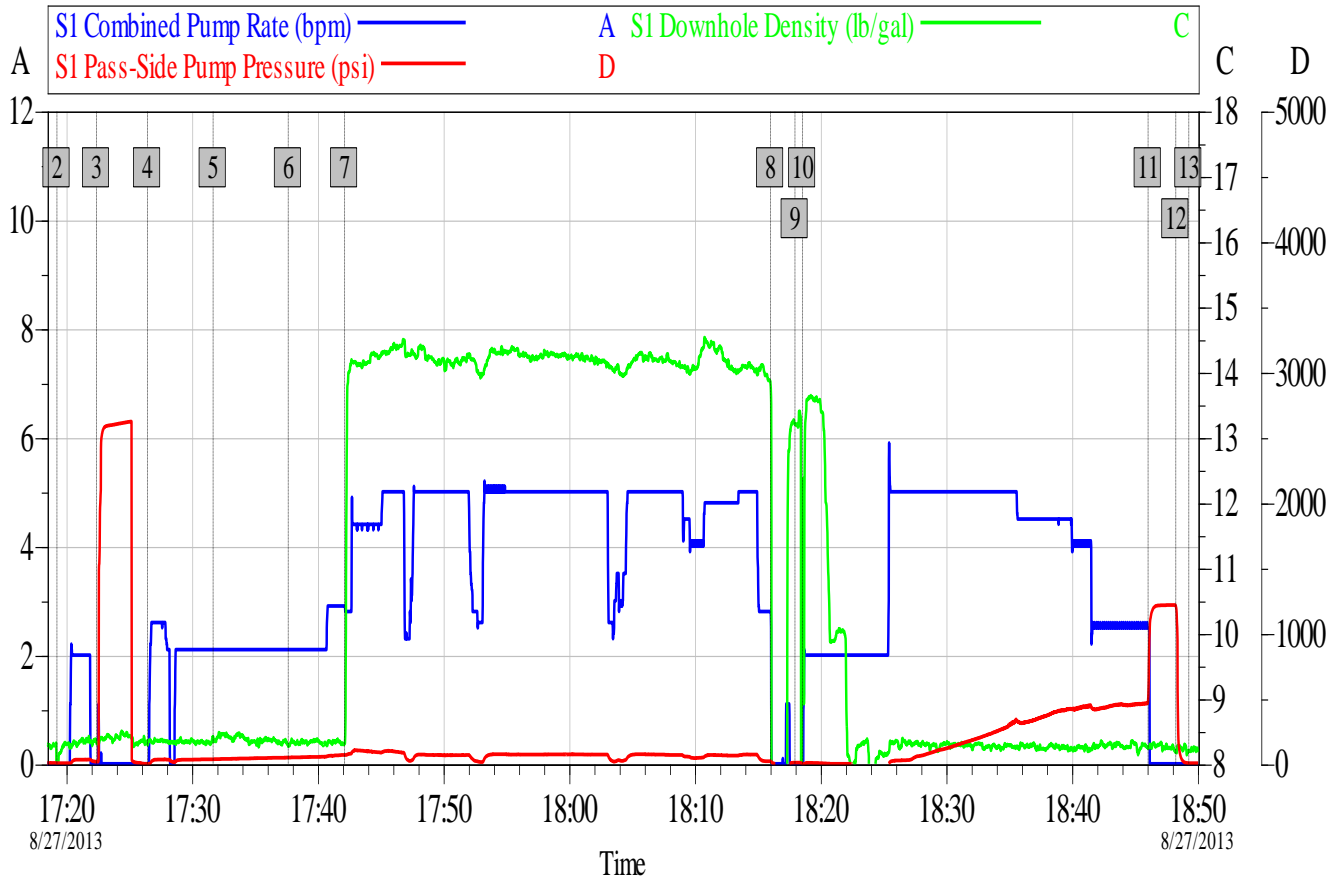
**Stage/Plug # 1 Fluid 4:** SwiftCem B2  
SWIFTCEM (TM) SYSTEM

Fluid Weight: 14.20 lbm/gal  
Slurry Yield: 1.54 ft<sup>3</sup>/sack  
Total Mixing Fluid: 7.68 Gal  
Surface Volume: 550.0 sacks  
Sacks: 550.0 sacks

# HALLIBURTON

## Data Acquisition

### GITTLEIN 4N-28HZ ANADARKO



Global Event Log					
Intersection	SPPP	Intersection	SPPP	Intersection	SPPP
2 Start Job	17:19:16 6.000	3 Test Lines	17:22:24 18.00	4 Pump Water	17:26:28 0.000
5 Pump Mudflush	17:31:41 36.00	6 Pump Water	17:37:40 49.00	7 Pump Swiftcem 14.2#	17:42:09 69.00
8 Shutdown	18:16:02 19.01	9 Drop Top Plug	18:17:59 10.000	10 Pump Displacement	18:18:35 1.000
11 Bump Plug	18:46:04 483.6	12 Check Floats	18:48:16 1211	13 End Job	18:49:18 6.000

Customer: Anadarko	Job Date: 27-Aug-2013	Sales Order #: 900697009
Well Description: Gittlein 4N-28HZ	UWI: 05-123-36385	
Service Supervisor: Christopher Pickell	Service Operator: William Jewell	

OptiCem v6.4.10  
27-Aug-13 19:40

# HALLIBURTON

## Service Supervisor Reports

### Job Log

Date/Time	Chart #	Activity Code	Pump Rate	Cum Vol	Pump	Pressure (psig)	Comments
08/27/2013 14:50		Depart Yard Safety Meeting					SAFTY MEETING AT YARD TO DISCUSS ROUTE TO LOCATION, SAFETY HAZARDS, AND CHECK THAT WE HAVE ALL WE NEED FOR THE JOB
08/27/2013 15:00		Depart from Service Center or Other Site					DEPART THE YARD FOR MAJOR 42
08/27/2013 15:30		Arrive At Loc					ARRIVE AT LOCATION 15 MINUTES EARLY. 1 JOINT OF CASING LEFT TO RUN
08/27/2013 15:35		Pre-Rig Up Safety Meeting					HAZARD HUNT PERFORMED. WATER TEST DONE.
08/27/2013 15:40		Rig-Up Equipment					SPOT IN TRUCKS ON SOUTH EAST SIDE OF THE RIG
08/27/2013 17:05		Pre-Job Safety Meeting					PRE JOB SAFETY MEETING WITH ALL PERSONEL ON LOCATION TO DISCUSS JOB SAFETY AND PROCEDURE
08/27/2013 17:19		Start Job					
08/27/2013 17:22		Test Lines	1	3		3500.0	PRESSURE TEST LINES TO 2500 PSI. CHECK FOR VISIBLE LEAKS AND PRESSURE LOSS
08/27/2013 17:26		Pump Spacer 1	2	10		50.0	PUMP WATER
08/27/2013 17:31		Pump Spacer 2	2	12		65.0	PUMP MUDFLUSH
08/27/2013 17:37		Pump Spacer 1	2	10		80.0	PUMP WATER
08/27/2013 17:42		Pump Cement	5	151		100.0	PUMP EXPANDACEM CEMENT 550 SKS 14.2 PPG 1.54 CUFT/SK 7.66 GAL/SK MIXED WITH RIG WATER
08/27/2013 18:16		Shutdown					WASH PUMPS AND LINES ON TOP OF THE PLUG
08/27/2013 18:17		Drop Top Plug					PLUG PRELOADED. WITNESSED BY COMPANY MAN
08/27/2013 18:18		Pump Displacement	5	97.9		500.0	PUMP DISPLACEMENT USING WATER
08/27/2013 18:46		Bump Plug	2.5			483.0	CALCULATED PRESSURE TO LAND WAS 385. PLUG LANDED WITH 483 PSI GOING 500 PSI OVER TO 1000.
08/27/2013 18:48		Check Floats					PRESSURE WAS HELD FOR 2 MINUTES THEN RELEASED. FLOATS HELD. 1/2 BBL BACK TO TANKS
08/27/2013 18:49		End Job					22.5 BBL OF CEMENT BACK TO SURFACE
08/27/2013 18:50		Pre-Rig Down Safety Meeting					SAFETY MEETING CONDUCTED TO DISCUSS RIG DOWN SAFETY AND PROCEDURE
08/27/2013 18:55		Rig-Down Equipment					WASHED UP PUMP TRUCK THEN BROKE DOWN ALL EQUIPMENT
08/27/2013 19:25		Safety Meeting - Departing Location					SAFETY MEETING TO DISCUSS HAZARDS AND JOURNEY BACK TO THE YARD
08/27/2013 19:30		Depart Location for Service Center or Other Site					DEPART LOCATION FOR FUEL THEN BACK TO THE YARD

**The Road to Excellence Starts with Safety**

<b>Sold To #:</b> 300466		<b>Ship To #:</b> 3097000		<b>Quote #:</b>		<b>Sales Order #:</b> 900697009	
<b>Customer:</b> ANADARKO PETROLEUM CORP - EBUS				<b>Customer Rep:</b> Porter, Bob			
<b>Well Name:</b> Gittlein			<b>Well #:</b> 4N-28HZ		<b>API/UWI #:</b> 05-123-36385		
<b>Field:</b> WATTENBERG		<b>City (SAP):</b> KERSEY		<b>County/Parish:</b> Weld		<b>State:</b> Colorado	
<b>Lat:</b> N 40.088 deg. OR N 40 deg. 5 min. 17.801 secs.				<b>Long:</b> W 104.674 deg. OR W -105 deg. 19 min. 34.003 secs.			
<b>Contractor:</b> MAJORS			<b>Rig/Platform Name/Num:</b> MAJORS 42				
<b>Job Purpose:</b> Cement Surface Casing							
<b>Well Type:</b> Development Well				<b>Job Type:</b> Cement Surface Casing			
<b>Sales Person:</b> FLING, MATTHEW			<b>Srvc Supervisor:</b> PICKELL, CHRISTOPHER			<b>MBU ID Emp #:</b> 396838	

**Job Personnel**

HES Emp Name	Exp Hrs	Emp #	HES Emp Name	Exp Hrs	Emp #	HES Emp Name	Exp Hrs	Emp #
JEWELL, WILLIAM Uris	0.0	503358	PICKELL, CHRISTOPHER Lee	0.0	396838	SIMMONS, KEATON	0.0	524850
SINCLAIR, RICHARD	0.0	368195	TRANCOSO, JEFF	0.0	550472			

**Equipment**

HES Unit #	Distance-1 way	HES Unit #	Distance-1 way	HES Unit #	Distance-1 way	HES Unit #	Distance-1 way
11036298	11 mile	11605597	11 mile	11667703C	11 mile	11748359	11 mile
NA	11 mile						

**Job**

**Job Times**

Formation Name				Date	Time	Time Zone
<b>Formation Depth (MD)</b>	<b>Top</b>	<b>Bottom</b>		<b>Called Out</b>	27 - Aug - 2013	12:00 MST
<b>Form Type</b>	BHST			<b>On Location</b>	27 - Aug - 2013	15:45 MST
<b>Job depth MD</b>	1316. ft	<b>Job Depth TVD</b>	1316. ft	<b>Job Started</b>	27 - Aug - 2013	17:19 MST
<b>Water Depth</b>		<b>Wk Ht Above Floor</b>	5. ft	<b>Job Completed</b>	27 - Aug - 2013	18:49 MST
<b>Perforation Depth (MD)</b>	<b>From</b>	<b>To</b>		<b>Departed Loc</b>	27 - Aug - 2013	19:30 MST

**Well Data**

Description	New / Used	Max pressure psig	Size in	ID in	Weight lbm/ft	Thread	Grade	Top MD ft	Bottom MD ft	Top TVD ft	Bottom TVD ft
13 1/2" Open Hole Section				13.5				.	1316.		
9 5/8" Surface Casing	New		9.625	8.921	36.		J-55	.	1306.		

**Fluid Data**

**Stage/Plug #: 1**

Fluid #	Stage Type	Fluid Name	Qty	Qty uom	Mixing Density lbm/gal	Yield ft <sup>3</sup> /sk	Mix Fluid Gal/sk	Rate bbl/min	Total Mix Fluid Gal/sk
---------	------------	------------	-----	---------	------------------------	---------------------------	------------------	--------------	------------------------

1	Fresh Water Spacer		10.00	bbl	8.33			1	
2	MUD FLUSH III	MUD FLUSH III - SBM (528788)	12.00	bbl	8.4			2	
3	Fresh water Spacer		10.00	bbl	8.33			2	
4	SwiftCem B2	SWIFTCEM (TM) SYSTEM (452990)	550.0	sacks	14.2	1.54	7.68	5	7.68
	7.68 Gal	FRESH WATER							
<b>Rates</b>									
Circulating		Mixing		Displacement				Avg. Job	
Cement Left In Pipe	Amount	40 ft	Reason	Shoe Joint					
Frac Ring # 1 @	ID	Frac ring # 2 @	ID	Frac Ring # 3 @	ID	Frac Ring # 4 @	ID		
The Information Stated Herein Is Correct				Customer Representative Signature					

