



Scale: 5" / 100'
Measured Depth Log

Well Name Wirkner-Vance 35C-1HZ

Location SWSW SEC 36, T3N, R67W

State COLORADO

Country USA

API Number 05-123-37883-0000

Region DJ BASIN

Spud Date 11/19/2013

Surface Coordinates 306' FSL & 861' FWL

Bottom Hole Coordinates 460' FSL & 801' FWL

County WELD

Rig Number ENSIGN 138

Field WATTENBERG

Drilling Completed 11/26/2013

Ground Elevation 4823'
Logged Interval 6733' To 12879'

K.B. Elevation 4836'
Total Depth 12879'

Formation CODELL SANDSTONE

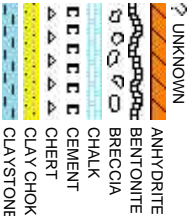
Type of Drilling Fluid H2O, LSND

Company Anadarko

Address Granite Tower
1099 18th St, S
Denver, CO 802

Name Zach Uber & W

Company Columbine Logg
Address 410 17th Street
Denver, CO 802



Operator

uite #1800
202

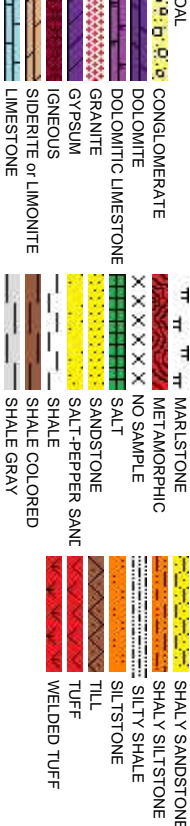
Geologist

hitney Jacks

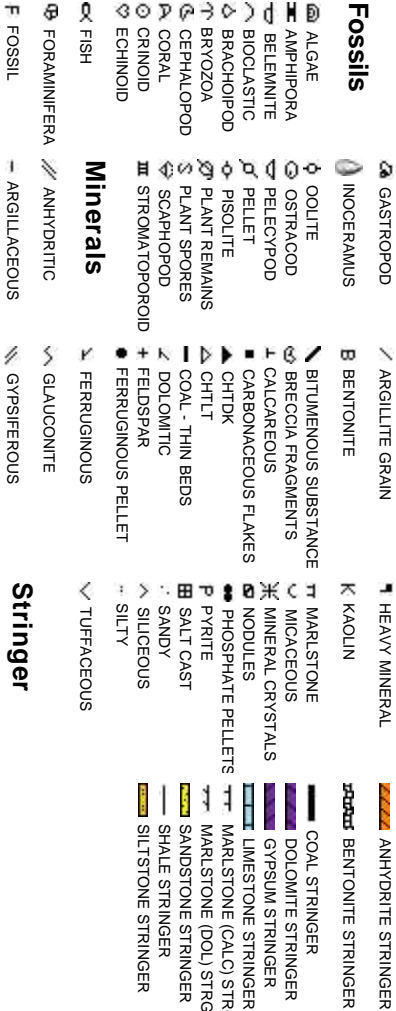
ging, Inc.

, Suite 1500
202

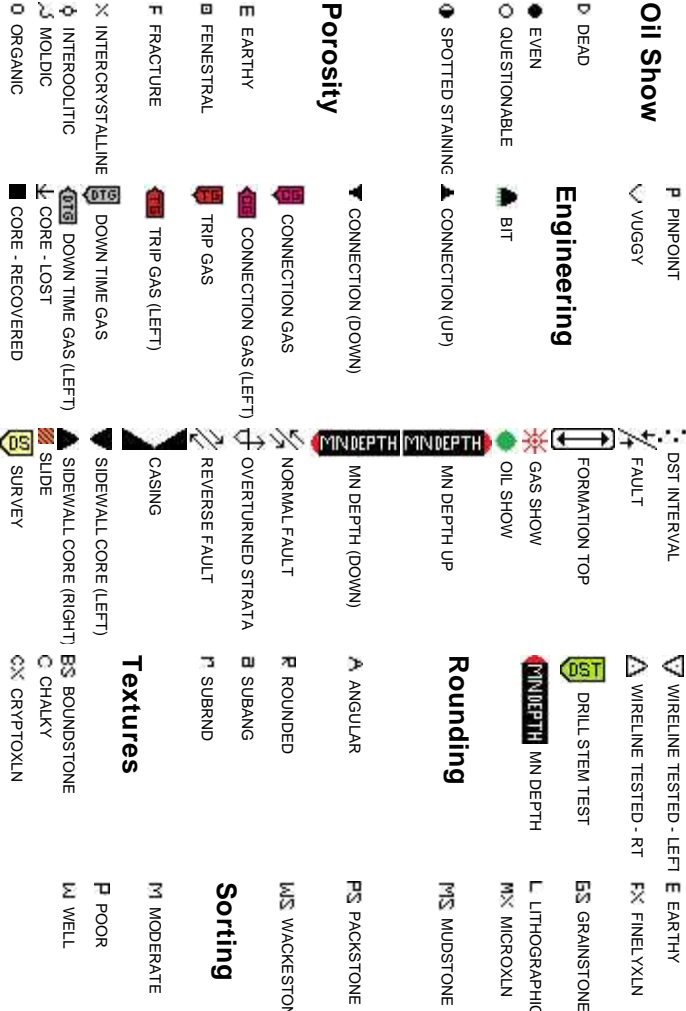
Rock Types



Accessories



Other Symbols



Slide/Rotate

GAMMA SCALE:
50 - 300 API

ROP
ROF
GAMMA

ROP SCALE:
0 - 400 FT/HR

Total Gas & Chromatograph

GAS
C1
C2
C3
C4

TOTAL GAS SCALE:
0 - 4500 UNITS

Depth Labels

% Lith

Well Bore
TVD

Oil Show

Images

EGMTST

COLUMBINE LOGGING RIGGED
UP ON 11/20/2013 USING
MANNED TWO-PERSON
LOGGING WITH BLOOHOUND
GAS CHROMATOGRAPH UNIT
#0551 HZ BEGAN ON
11/20/2013 @ 00:40 HRS MST

100% SLTY SH: lt-dk gy/ blk,sb pty-sb blk,y, frm, rthy-sb wxy, mtx; arg-slty,non-calc

100% SLTY SH: lt-dk gy/ blk,s

Bit Data
Type: Smith/SDi 611
Size: 8.75
Jets: 3x14/3x16

MD: 6,700'
TVD: 6,639.05'
Inclination: 3.9°
Azimuth: 166.5°
VS: -659.65'

MD: 6,795'
TVD: 6,733.57'
Inclination: 7.5°
Azimuth: 177.8°
VS: -650.32'

MD:
TVD (ft)
Incl
Azim
VS:

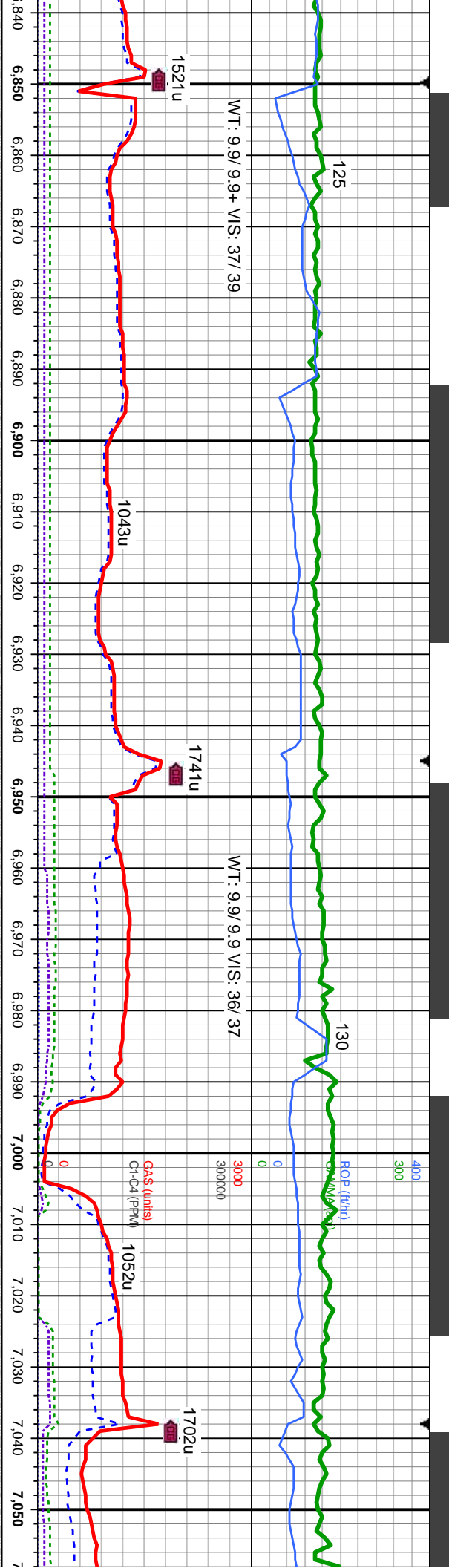
KOP: 6733' MD
100' SAMPLE INTERVALS

6500

WT: 9.9+ / 10.0 V/S: 38/ 39

GAS (units)
C1-C4 (PPM)

1002u



6,842'
6,780.04'
ation: 9.6°
uth: 179.6°
643.34'

MD: 6,889'
TVD: 6,826.13'
Inclination: 12.9°
Azimuth: 178.2°
VS: -634.17'

MD: 6,936'
TVD: 6,871.53'
Inclination: 17°
Azimuth: 178.5°
VS: -622.06'

MD: 6,984'
TVD: 6,916.91'
Inclination: 21°
Azimuth: 179.9°
VS: -606.44'

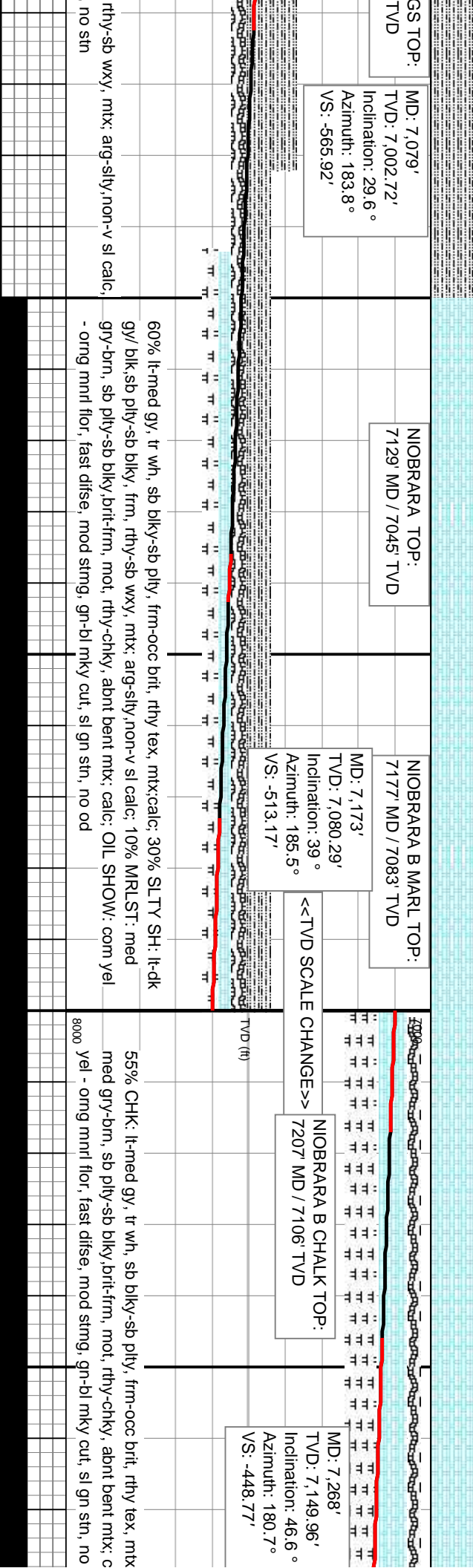
SHARON SPRIN
7062' MD / 6988'

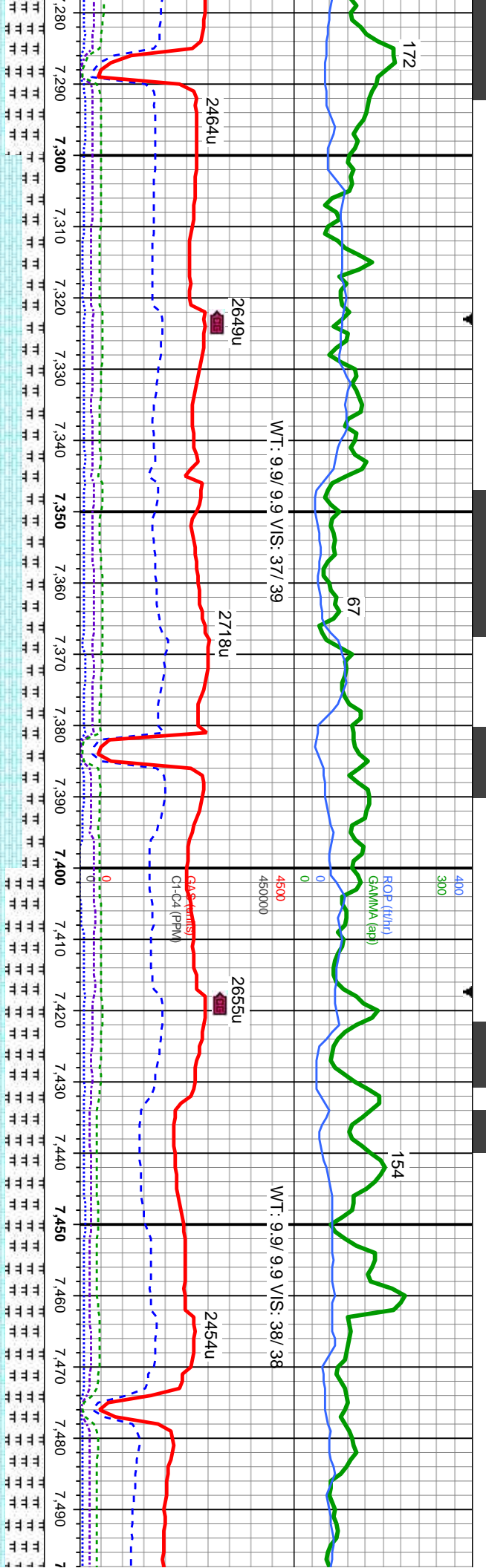
ply-sb blk, frm, rthy-sb wxy, mt; arg-slt, non-calc

100% SLTY SH: lt-dk gy/ blk, sb ply-sb blk, frm, rthy-sb wxy, mt; arg-slt, non-v sl calc

100% SLTY SH: lt-dk gy/ blk, sb ply-sb blk, frm, mod bent; OIL SHOW: thn yel-gn cut, no min flor.







Fort Hays Top:
7594' MD/7314'

MD: 7,315'
TVD: 7,181.38'
Inclination: 49.5 °
Azimuth: 178.2 °
VS: -413.83'

NIOBRARA C CHALK TOP:
7304' MD / 7174' TVD

MD: 7,362'
TVD: 7,211.15'
Inclination: 51.9 °
Azimuth: 177.7 °
VS: -377.5'

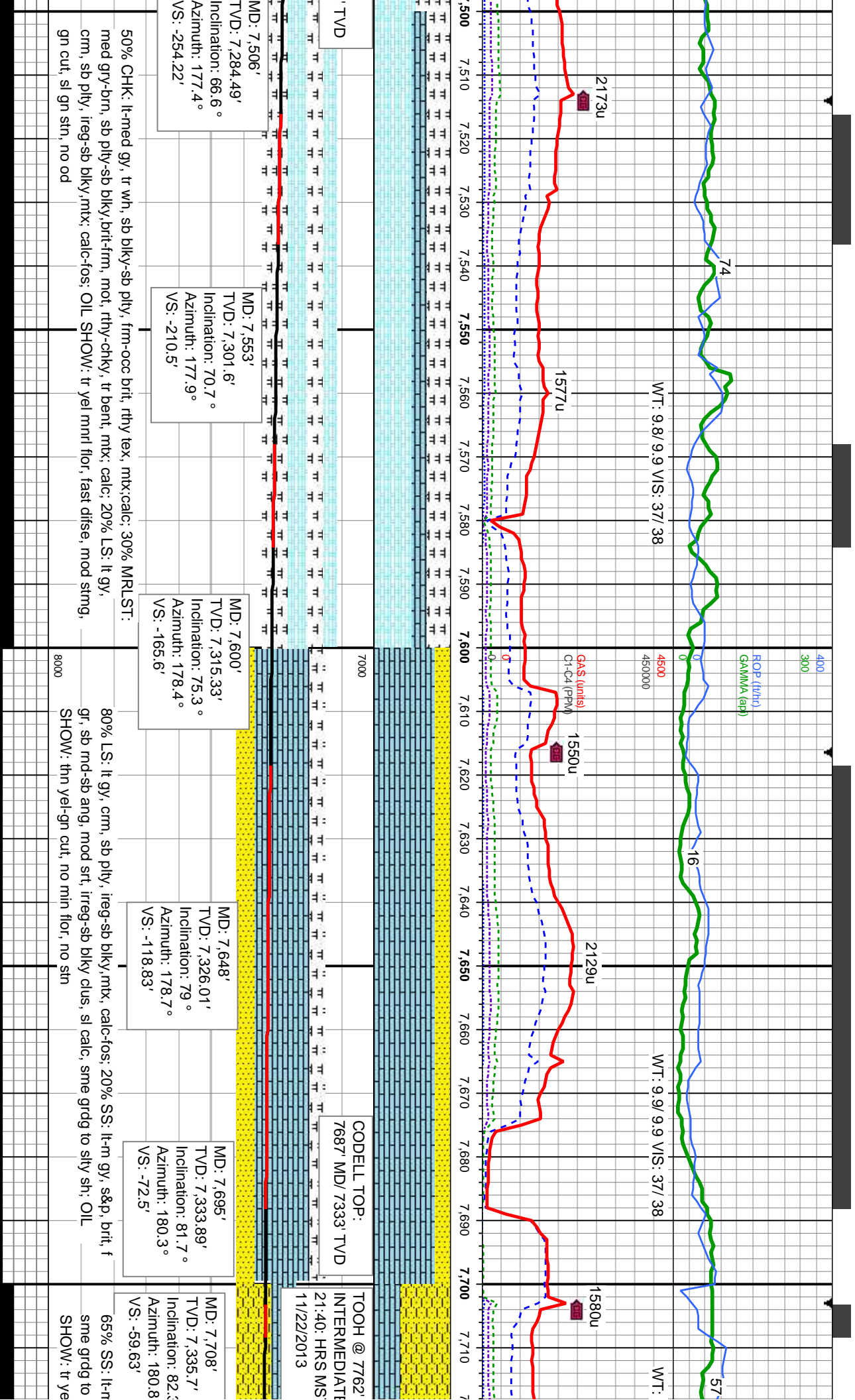
MD: 7,409'
TVD: 7,238.63'
Inclination: 56.5 °
Azimuth: 177.3 °
VS: -339.43'

MD: 7,459'
TVD: 7,264.15'
Inclination: 62.1 °
Azimuth: 177.3 °
VS: -296.52'

75% CHK: lt-med gy, tr wh, sb blk-y-sb ply, frm-occ brit, rthy tex, mt-x;calc; 25% MRLST: med gry-brn, sb ply-sb blk-y,brit-frm, mot, rthy-chky, tr bent, mt-x; calc; OIL SHOW: bl-gn string cut, fast dfise, tr-mod yel min flor, solid gn resd sin, no od

55% CHK: lt-med gy, tr wh, sb blk-y-sb ply, frm-occ brit, rthy tex, mt-x;calc; 45% MRLST: med gry-brn, sb ply-sb blk-y,brit-frm, mot, rthy-chky, tr bent, mt-x; calc; OIL SHOW: tr yel mnrl flor, fast dfise, mod string, gn cut, sl gn sin, no od





50% CHK: lt-med gy, tr wh, sb blk-y-sb pty, frm-occ brit, rthy tex, mix;calc; 30% MRLST: med gry-brn, sb pty-sb blk-y, brit-fm, mot, rthy-chky, tr bent, mix; calc; 20% LS: lt gy, cm, sb pty, irreg-sb blk-y,mix; calc-fos; OIL SHOW: tr yel mnrl flr, fast difse, mod stimg, gn cut, sl gn sin, no od

80% LS: lt gy, cm, sb pty, irreg-sb blk-y,mix, calc-fos; 20% SS: lt-m gy, s&p, brit, f gr, sb md-sb ang, mod srt, irreg-sb blk-y clus, sl calc, sme grdg to silty sh; OIL SHOW: thn yel-gn cut, no min flr, no sin

65% SS: lt-rn sme grdg to SHOW: tr ye



MINDEPTH

11/23/13-11/24/13

87

GAMMA (cp)

ROP (ft/hr)

116

9.9/ 9.9 VIS: 38/ 38

WT: 10.1/ 10.1 VIS: 38/ 38

WT: 9.6+ 9.7 VIS: 34/ 35

2993u

1696u

GAS (units)
CL (CLPPM)

1532u

7,720 7,730 7,740 7,750 7,760 7,770 7,780 7,790 7,800 7,810 7,820 7,830 7,840 7,850 7,860 7,870 7,880 7,890 7,900 7,910 7,920 7,930

MD FOR
E CASING @
TION

RESUMED LATERAL @ 16:03
HRS MST ON 11/24/13

<<TVD SCALE CHANGE>>

6900

MD: 7,883'
TVD: 7,344.69'
Inclination: 89.2 °
Azimuth: 181.4 °
VS: 114.98'

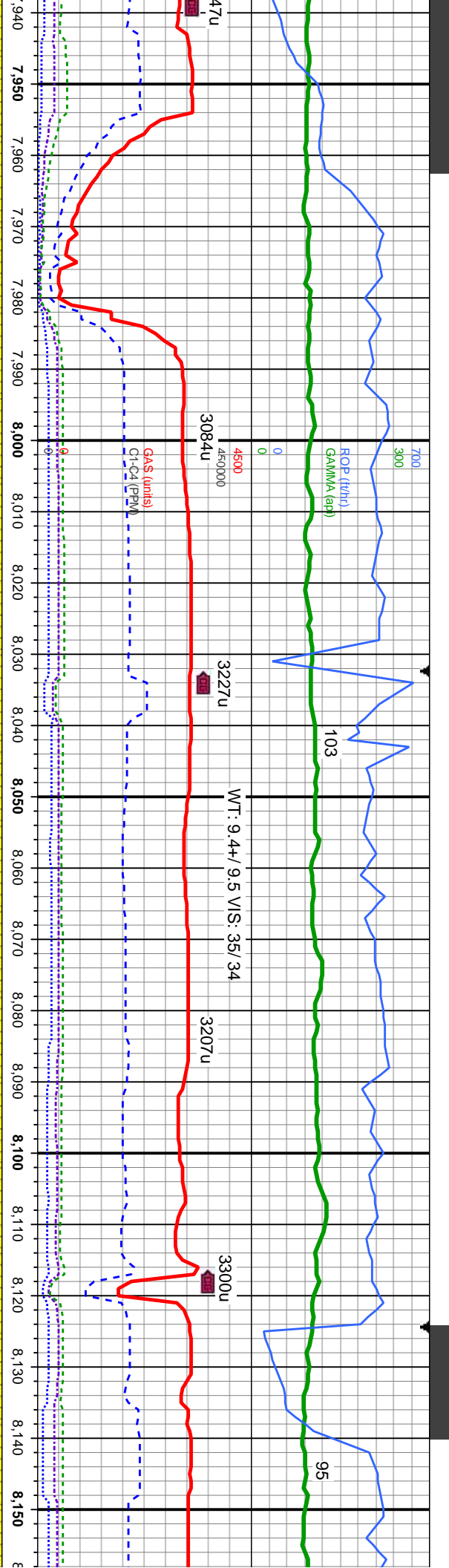
MD: 7,789'
TVD: 7,342.47'
Inclination: 88.1 °
Azimuth: 181.9 °
VS: 21.04'

gy, s&p, brt, f gr, sb rnd-sb ang, mod srt, irreg-sb blkly clus, sl calc,
sistly sh; 35% LS, lt gy, cm, sb ply, irreg-sb blkly,mtx, calc-fos; OIL
l mnt flr, fast difse, mod sting, gn cut, sl gn str, no od

100% SHY SS: med brn - gy brn, occ dk gy brn, trns l - clr gr, vt - f gr, sb rnd - sb ang,
hd, brt - fri, w srt, mod - p cons ip, tt clus, arg mtx ip, mod calc; OIL SHOW: tr yel mnt
flr, fast difse, mod sting, gn cut, sl gn str, no od

100% SHY SS: med gy brn, occ l
brt - fri, w srt, mod cons, tt clus, e
sting cut, fast difse, tr-mod yel m



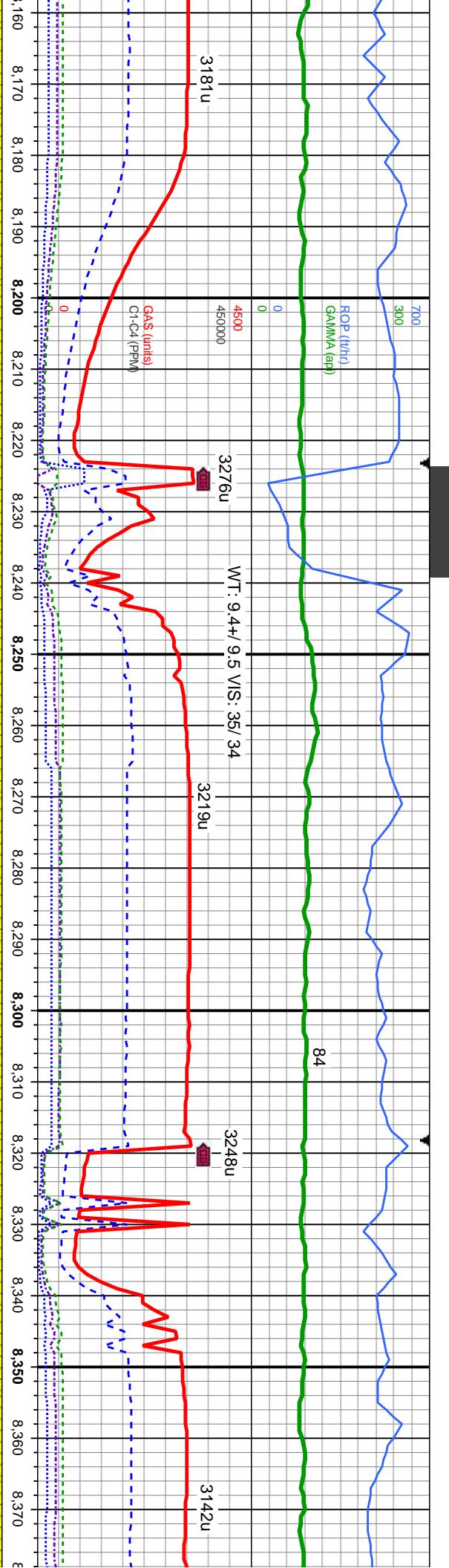


MD: 7,978'
TVD: 7,345.02'
Inclination: 90.4 °
Azimuth: 181.3 °
VS: 209.97'

MD: 8,072'
TVD: 7,343.54'
Inclination: 91.4 °
Azimuth: 182.1 °
VS: 303.92'

| | | |
|---|--|---|
| gy brn, trnsl - clr gr, vf - f gr, sb rnd - sb ang, mod hd, arg mtx, mod calc, tr pyr, tr silty sh; OIL SHOW: bl-gn n flr, solid gn resd sln, no od | 100% SHY SS: med gy brn, occ lt gy brn, trnsl - clr gr, vf - f gr, sb rnd - sb ang, mod hd, brt - fri, w srt, mod cons, tt clus, arg mtx, mod calc, tr pyr, tr silty sh; OIL SHOW: mod difse, mod bl-wh stmg, bl-wh mky cut, n flr sln or od | 100% SHY SS: med gy brn, occ lt gy brn, trnsl - clr gr, brt - fri, w srt, mod cons, tt clus, arg mtx, mod calc, difse, mod bl-wh stmg, bl-wh mky cut, n flr sln or od |
|---|--|---|



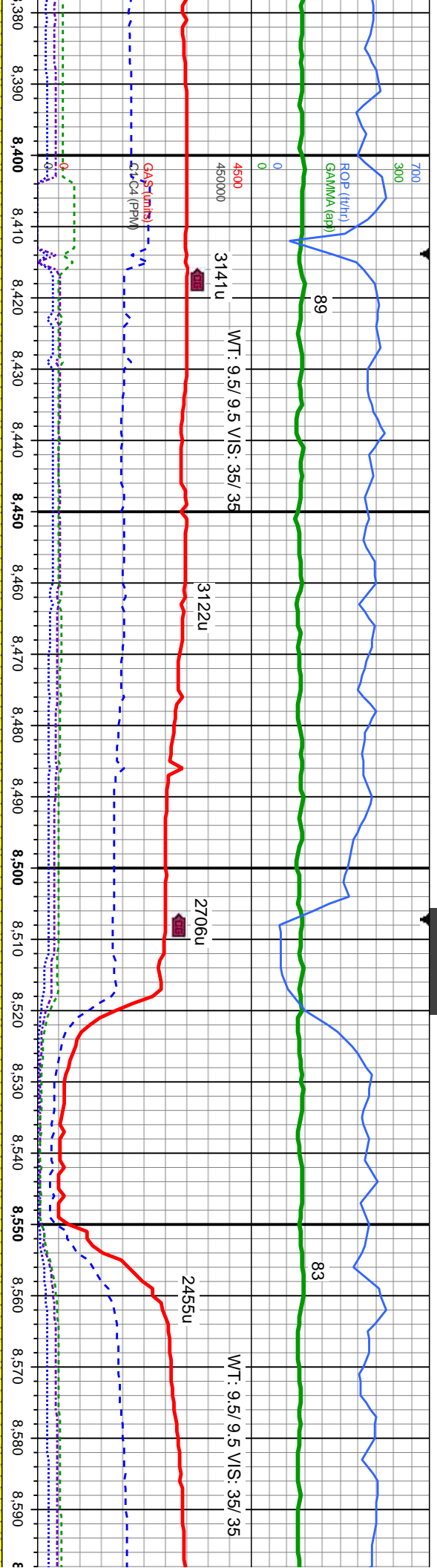


| | | |
|--|------|---|
| MD: 8,167' VD: 7,341.38' Inclination: 91.2° Azimuth: 183.4° S: 398.81' | 6900 | MD: 8,263' TVD: 7,340.3' Inclination: 90.1° Azimuth: 182.2° VS: 494.71' |
|--|------|---|

MD (ft)

| | | | |
|--|--|------|--|
| gr, vf - f gr, sb rnd - sb ang, mod hd, tr pyr, tr silty sn; OIL SHOW: mod | 100% SHY SS: lt - med brn, occ wh, trns; clr gr, vf - f gr, sb rnd - sb ang, hd, brit, mod srt, cons, tt clus, arg mtx, sl calc; OIL SHOW: mod-fast difse, mod bl-wh string, bl-wh mky cut, n flor sin or od | 7900 | 100% SHY SS: lt - med brn, occ wh, trns; clr gr, vf - f gr, sb rnd - sb ang, hd, brit, mod srt, cons, tt clus, arg mtx, sl calc; OIL SHOW: mod-fast difse, mod bl-wh mky cut, n flor sin or od |
|--|--|------|--|



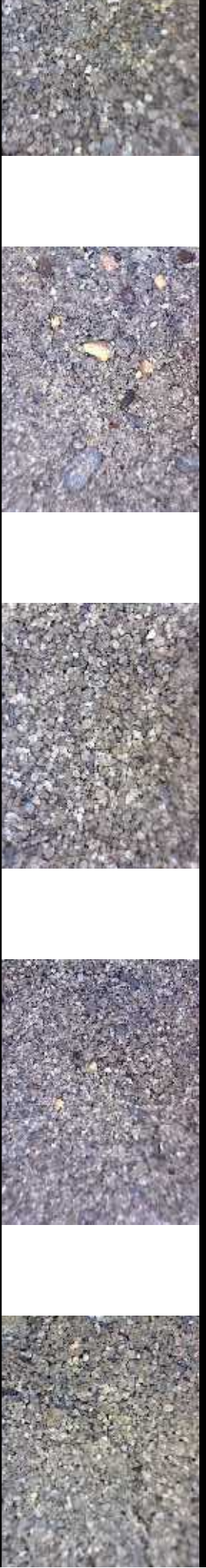


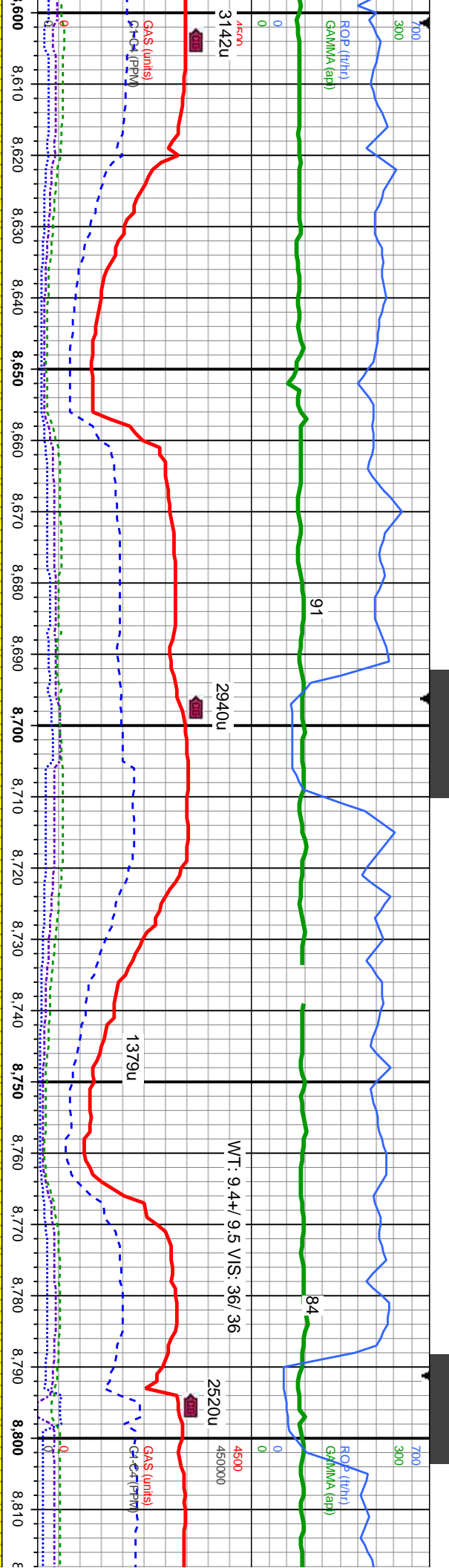
MD: 8,452'
TVD: 7,339.3'
Inclination: 91.1 °
Azimuth: 180.8 °
VS: 683.68'

MD: 8,546'
TVD: 7,338.4'
Inclination: 90 °
Azimuth: 179.6 °
VS: 777.68'

g, hd, brit, mod
stmg, bl-wh
100% SHY SS: lt - med brn, occ wh, trnsi - clr gr, vf - f gr, sb rnd - sb ang, hd, brit, mod srt, cons, tt clus, arg mtz, tr sh, sl calc; OIL SHOW: mod-fast difse, mod bl-wh
stmg, bl-wh mky cut, n flor stn or od
7900

100% SHY SS: lt - med brn, occ wh, trnsi - clr gr, vf - f gr, sb rnd - sb ang, hd, brit, mod srt, cons, tt clus, arg mtz, tr sh, sl calc; OIL SHOW: bl-gn stmg cut, fast difse, tr-mod yel min flor, solid gn resd stn, no od





MD: 8,641'
TVD: 7,337.9'
Inclination: 90.6 °
Azimuth: 179.3 °
VS: 872.66'

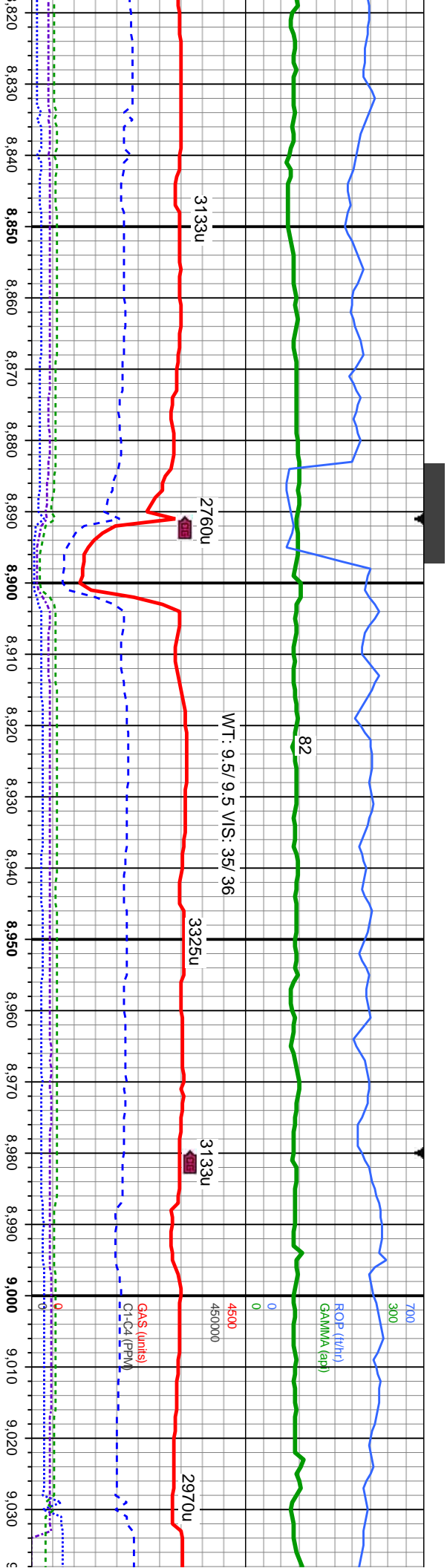
MD: 8,736'
TVD: 7,337.4'
Inclination: 90 °
Azimuth: 179.1 °
VS: 967.64'

SHY SS: lt - med brn, ofwht, trnsi - clr gr, vf - f gr, sb rnd - sb ang, mod - v hd, brit - fri ip, mod srt, cons, tt clus, mod cnt, sl calic ip, tr fy initiam silty sn; OIL SHOW: bl-gn stmg cut, fast dfise, tr-mod yel min flor, solid gn resdl sn, no od

100% SHY SS: lt - med brn, ofwht, trnsi - clr gr, vf - f gr, sb rnd - sb ang, mod - v hd, brit - fri ip, mod srt, cons, tt clus, mod cnt, sl calic ip, tr fy initiam silty sn; OIL SHOW: bl-gn stmg cut, fast dfise, tr-mod yel min flor, solid gn resdl sn, no od

100% SHY
mod srt, cor
tr-mod yel n

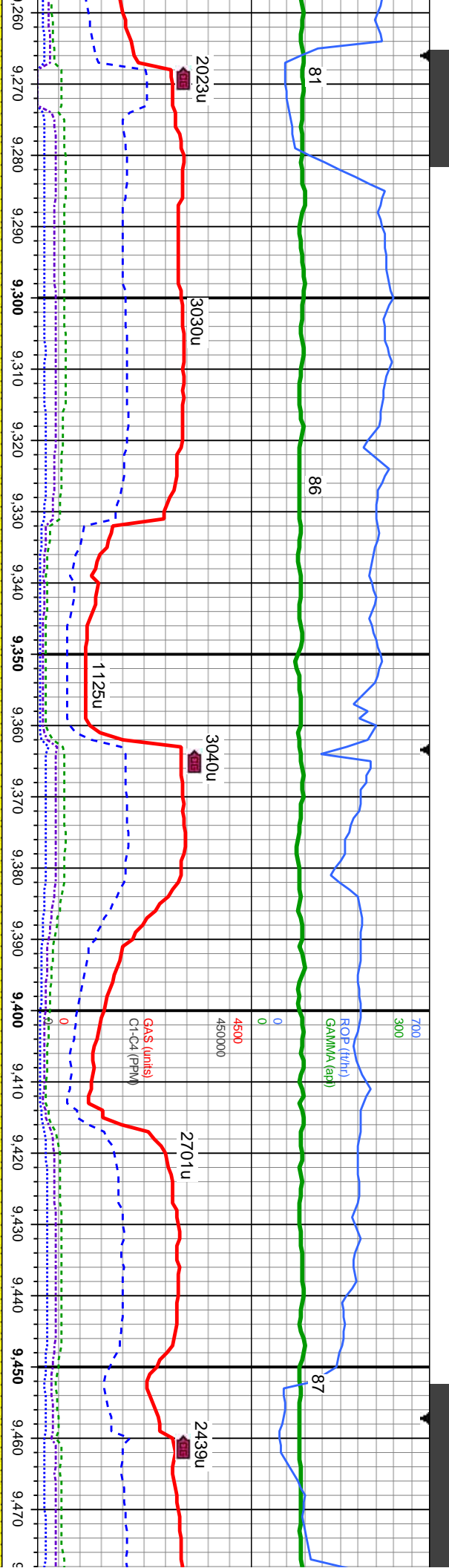




| | |
|--------------------|--------------------|
| MD: 8,830' | MD: 8,924' |
| TVD: 7,337.57' | TVD: 7,338.31' |
| Inclination: 89.8° | Inclination: 89.3° |
| Azimuth: 179.2° | Azimuth: 179.3° |
| VS: 1,061.62' | VS: 1,155.6' |

| | |
|--|---|
| SS: lt - med brn, occ wh, trnsf - clr gr, vf - f gr, sb md - sb ang, hd, brit, ss, tt clus, arg mtx, tr sh, sl calc; OIL SHOW: bl-gn string cut, fast difse, thin flor, solid gn resd stn, no od | 100% SHY SS: lt - med brn, occ wh, trnsf - clr gr, vf - f gr, sb md - sb ang, hd, brit, mod srt, cons, tt clus, arg mtx, tr sh, sl calc; OIL SHOW: tr yel mnrl flor, fast difse, mod string, gn cut, sl gn stn, no od |
|--|---|



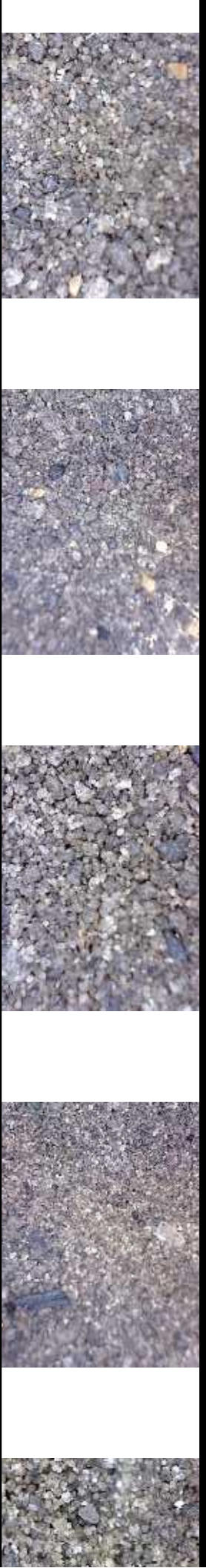


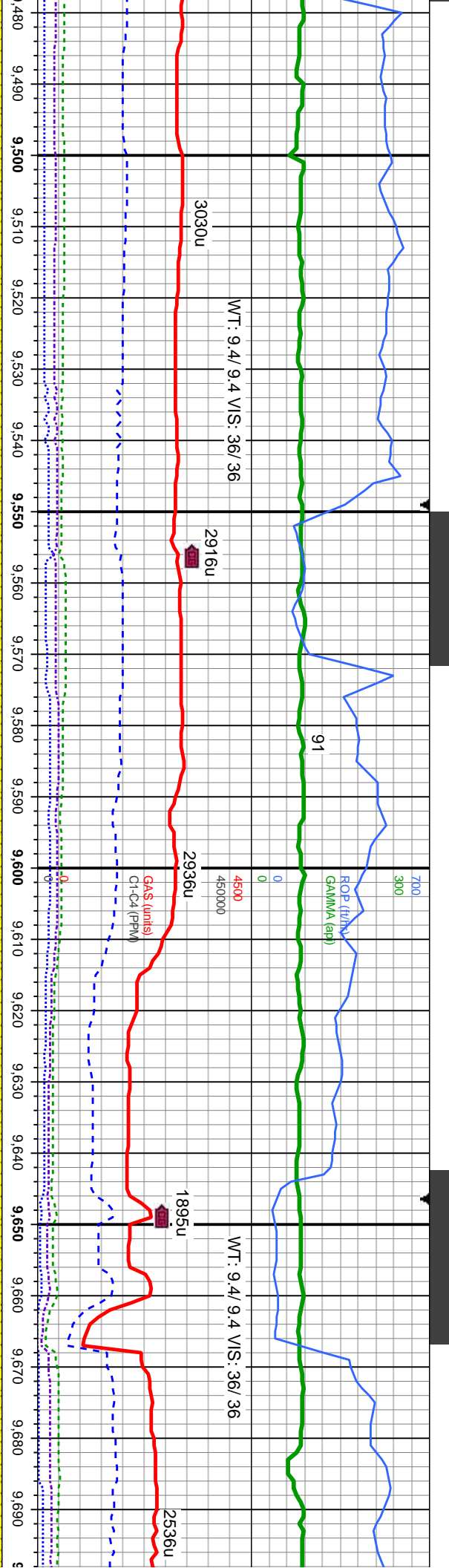
MD: 9,304'
TVD: 7,341.21'
Inclination: 90 °
Azimuth: 179.6 °
VS: 1,535.46'

MD: 9,399'
TVD: 7,342.54'
Inclination: 88.4 °
Azimuth: 177 °
VS: 1,630.38'

cll gr, vf - f gr, sb md - sb ang, mod
d calc, tr slty sh; OIL SHOW: fast
100% SHY SS: lt - dk brn, gy brn, tmsl - clr gr, vf - f gr, sb md - sb ang, v hd, brit, mod srt,
cons, tt clus, sl-calc; OIL SHOW: mod difse, tr yel min flr, bl-wh string, bl-wh mky cut,
mod gn-bl stn, no od

100% SHY SS: lt - dk brn, gy brn, tmsl - clr gr, vf - f gr, sb md - sb e
srt, cons, tt clus, sl-calc; OIL SHOW: mod difse, tr yel min flr, bl-wh
mky cut, mod gn-bl stn, no od





MD: 9,494'
TVD: 7,343.86'
Inclination: 90 °
Azimuth: 177.7 °
VS: 1,725.24'

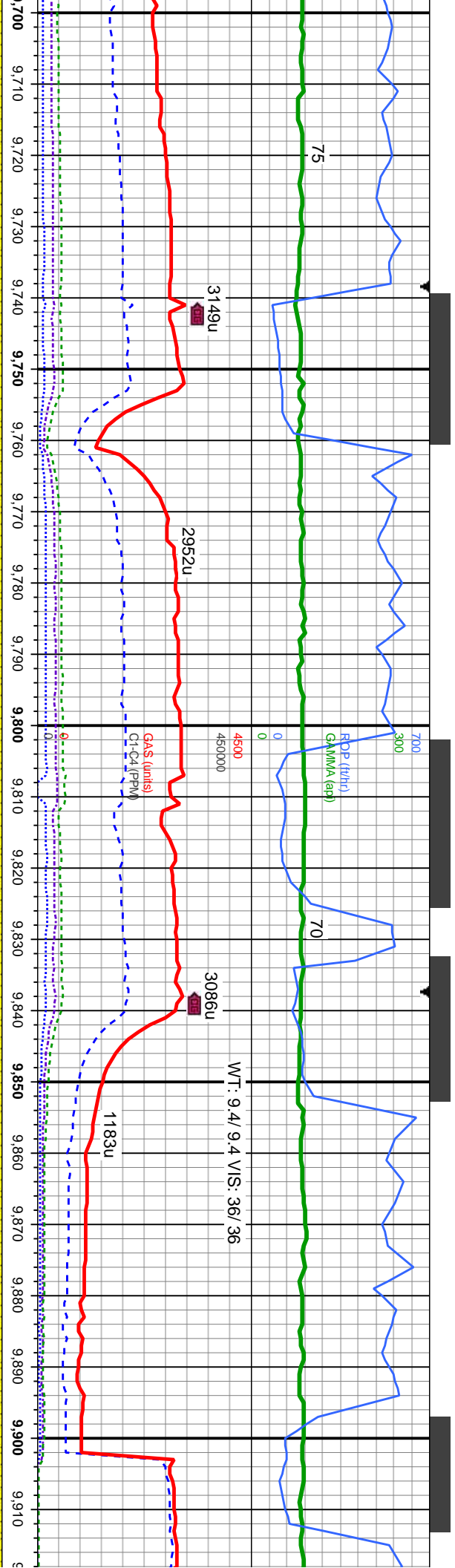
MD: 9,588'
TVD: 7,343.62'
Inclination: 90.3 °
Azimuth: 178 °
VS: 1,819.15'

MD: 9,683'
TVD: 7,344.78'
Inclination: 88.3 °
Azimuth: 177.1 °
VS: 1,914.03'

100% SHY SS: lt - dk brn, gy brn, trns l - clr gr, vf - f gr, sb md - sb ang, v hd, brit, mod srt, cons, tt clus, sl-calc; OIL SHOW: bl-gn string cut, fast difse, tr-mod yel min flr, solid gn resd stn, no od

100% SHY SS: lt - med brn, offwht, trns l - clr gr, vf - f gr, sb md - sb ang, mod - v hd, brit - fri ip, mod srt, cons, tt clus, mod cnt, sl calc ip, tr fy intam slty sh; OIL SHOW: mod difse, tr yel min flr, bl-wh string, bl-wh mky cut, mod gn-bl stn, no od





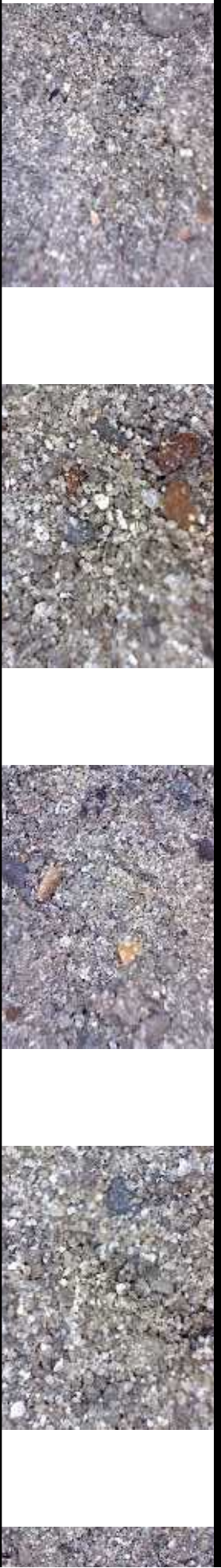
MD: 9,778'
TVD: 7,346.43'
Inclination: 89.7 °
Azimuth: 177.9 °
VS: 2,008.89'

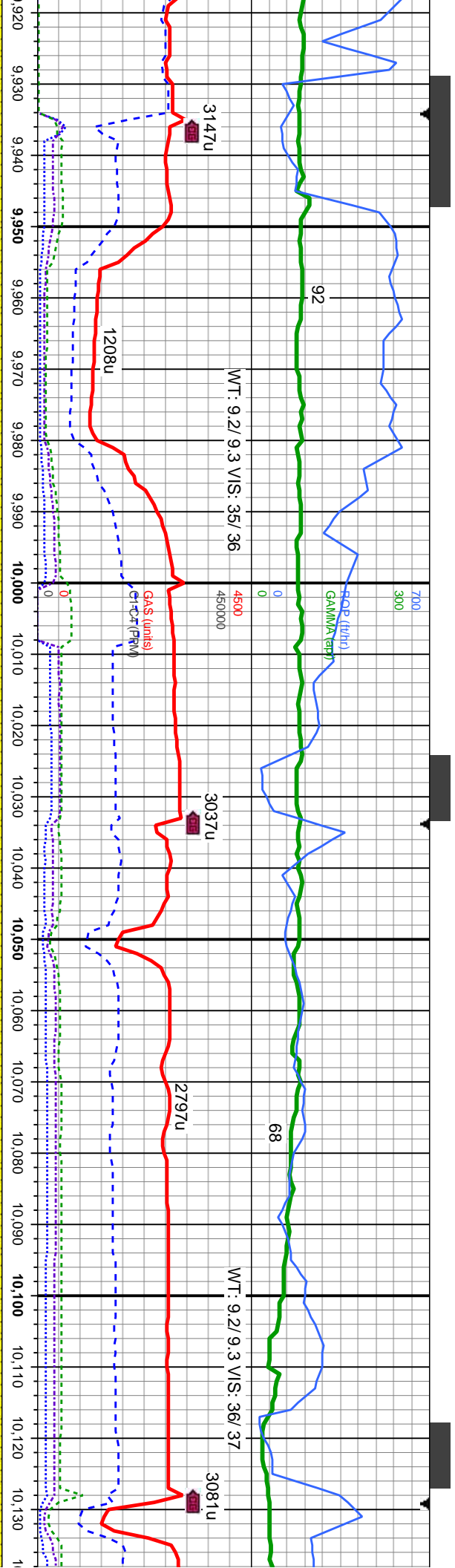
MD: 9,873'
TVD: 7,346.27'
Inclination: 90.5 °
Azimuth: 179.6 °
VS: 2,103.85'

100% SHY SS: lt - med brn, offwht, trns - clr gr, vf - f gr, sb rnd - sb ang, mod - v hd, brit - fri ip, mod srt, cons, tt clus, mod cnt, si calc ip, tr fy intlam silty sh; OIL SHOW: bl-gn string cut, fast dfise, tr-mod yel min flor, solid gn resdl shn, no od

100% SHY SS: lt - med brn, offwht, trns - clr gr, vf - f gr, sb rnd - sb ang, mod - v hd, brit - fri ip, mod srt, cons, tt clus, mod cnt, si calc ip; OIL SHOW: bl-gn string cut, fast dfise, tr-mod yel min flor, solid gn resdl shn, no od

100% SHY SS: - fri ip, mod srt, tr-mod yel min





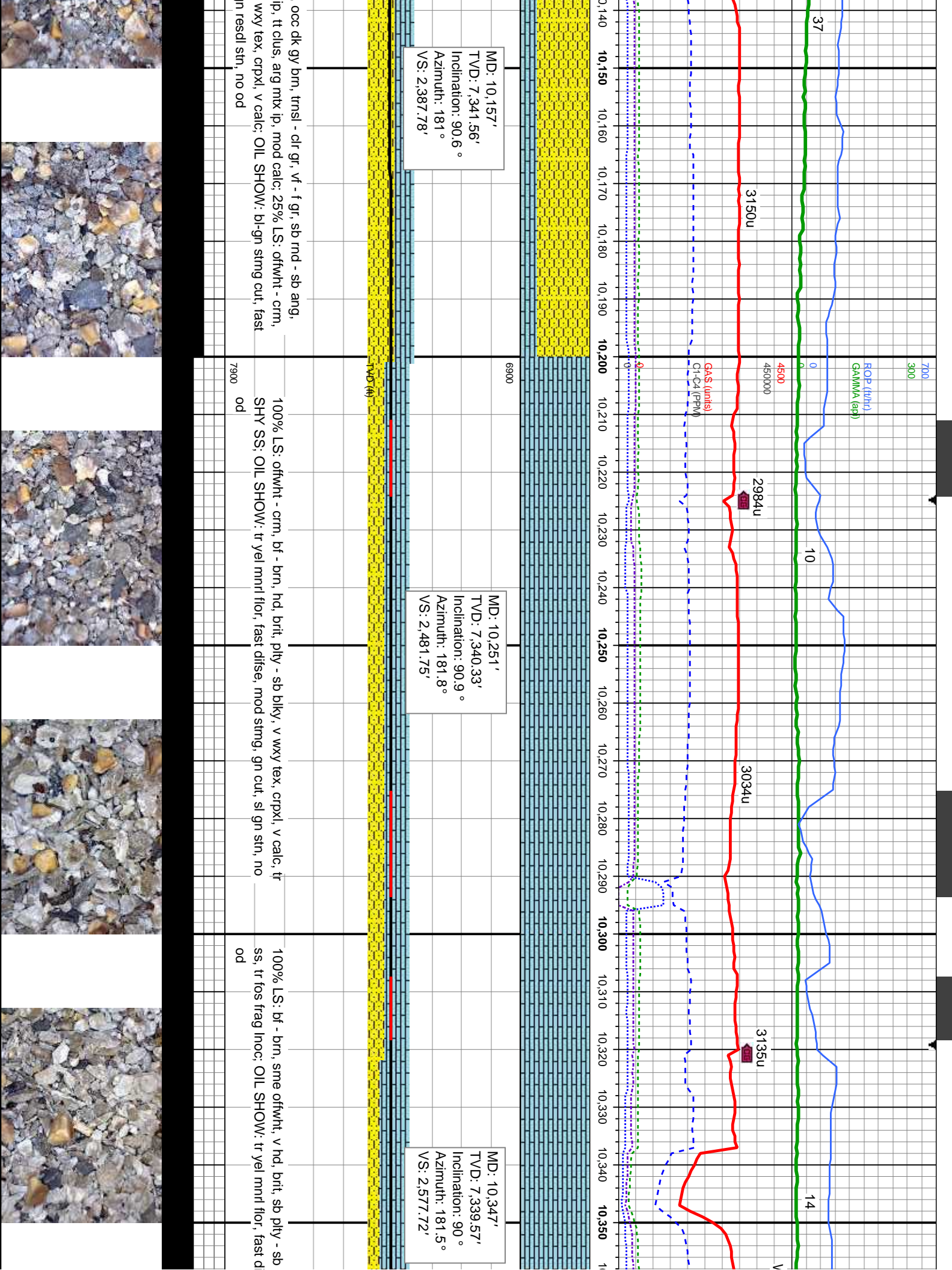
MD: 9,969'
TVD: 7,344.68'
Inclination: 91.4°
Azimuth: 181.7°
VS: 2,199.83'

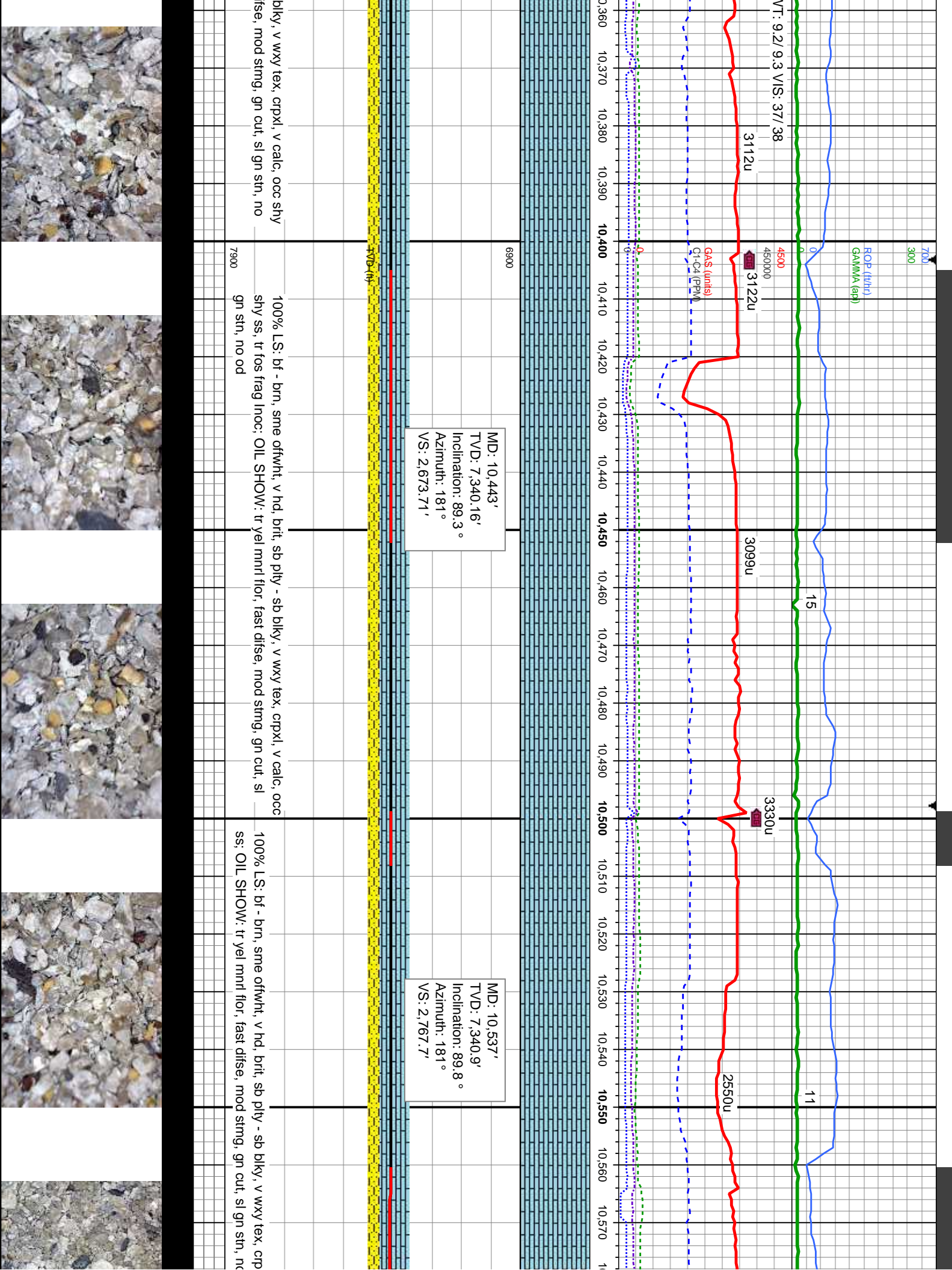
MD: 10,063'
TVD: 7,342.79'
Inclination: 90.9°
Azimuth: 181.2°
VS: 2,293.79'

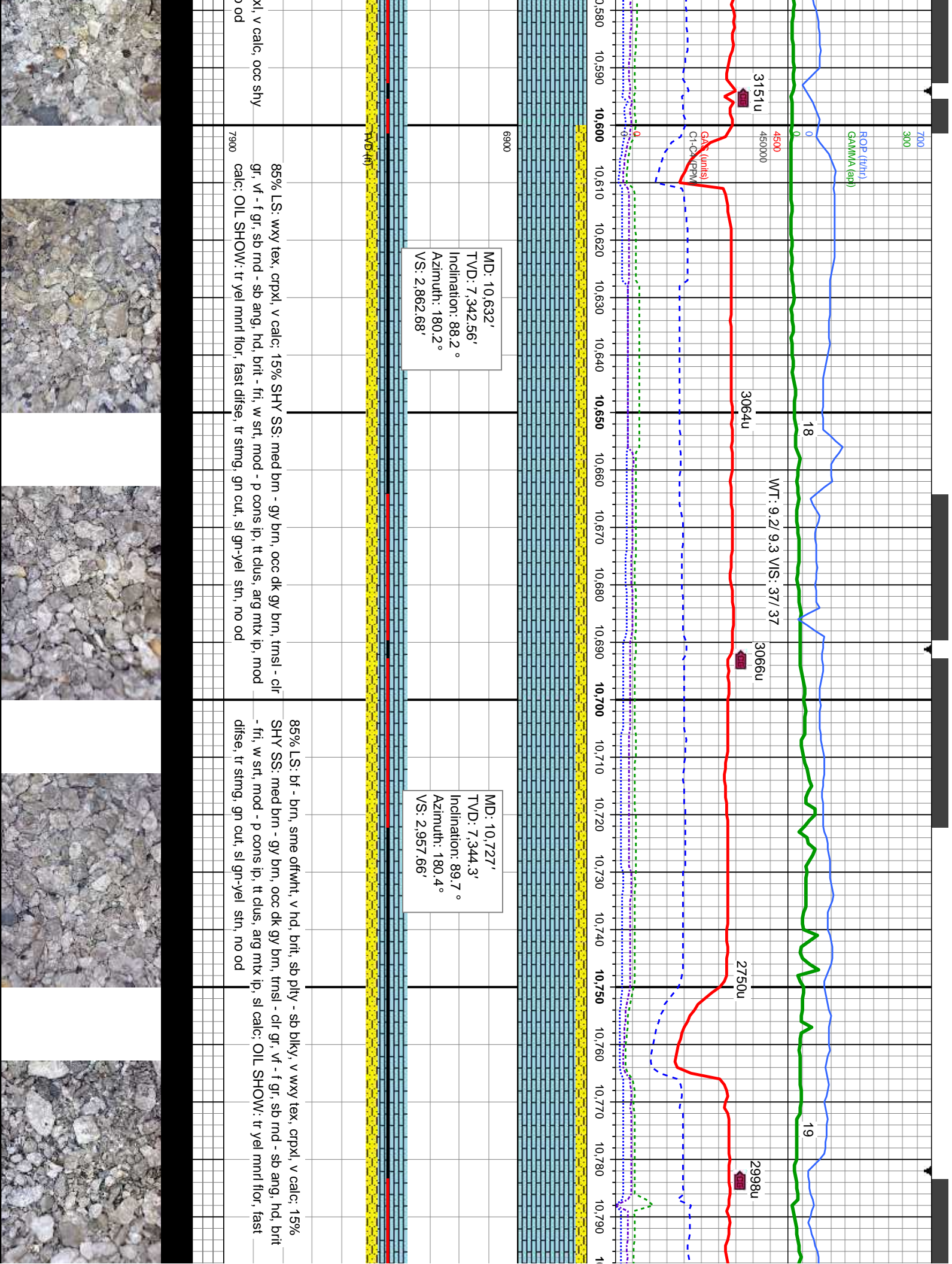
lt - med brn, offwht, trns - clr gr, vf - f gr, sb rnd - sb ang, mod - v hd, brit
cons, tt clus, mod cmt, sl calc ip: OIL SHOW: gn stmg cut, fast difse,
flor, solid gn resdl str, no od

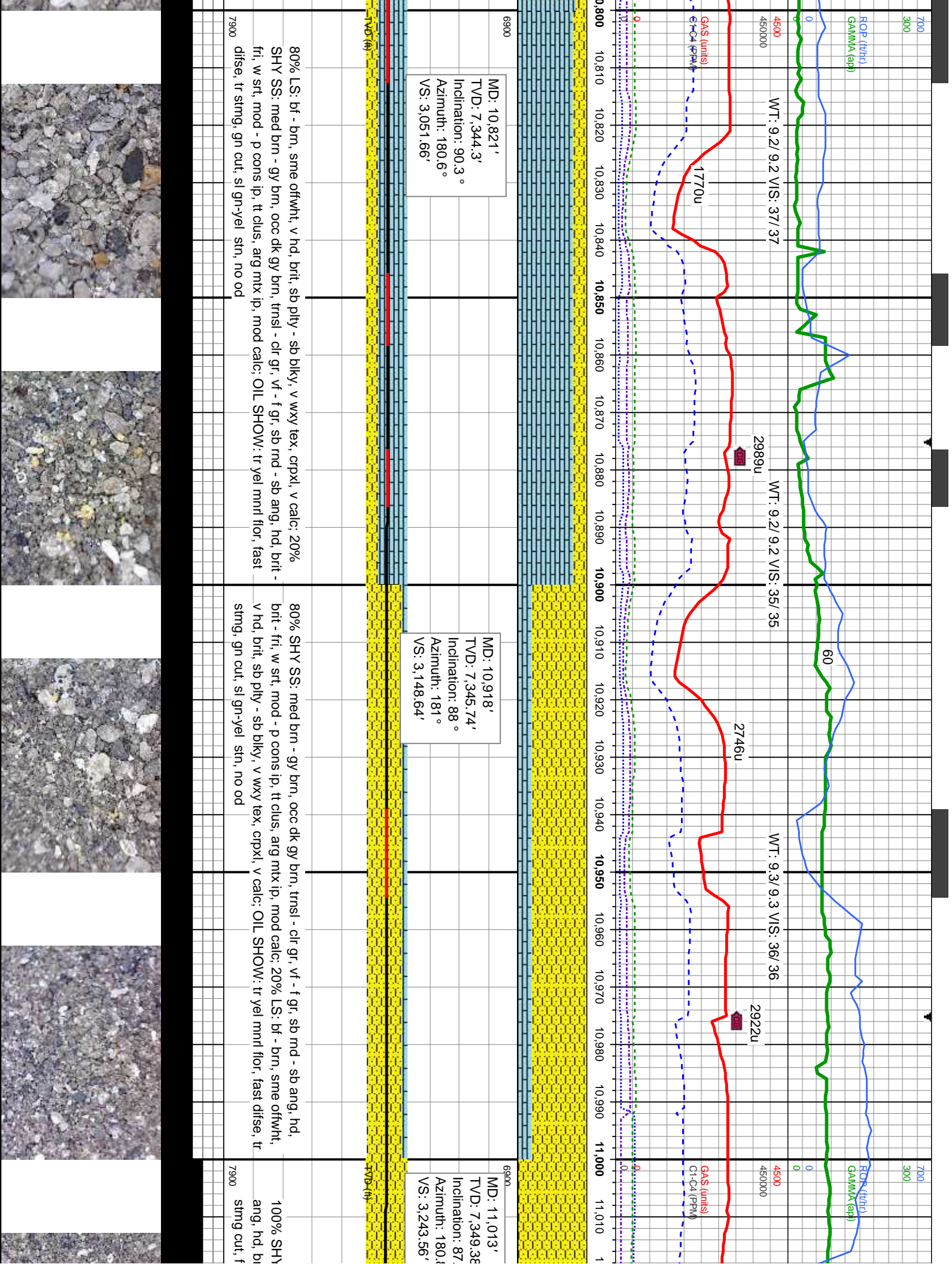
100% SHY SS: med brn - gy brn, ooc dk gy brn, trns - clr gr, vf - f gr, sb rnd - sb ang,
hd, brit - fri, w srt, mod - p cons ip, tt clus, ang mtr ip, mod calc: OIL SHOW: br-gn
stmg cut, fast difse, tr-mod yel mln flor, solid gn resdl str, no od

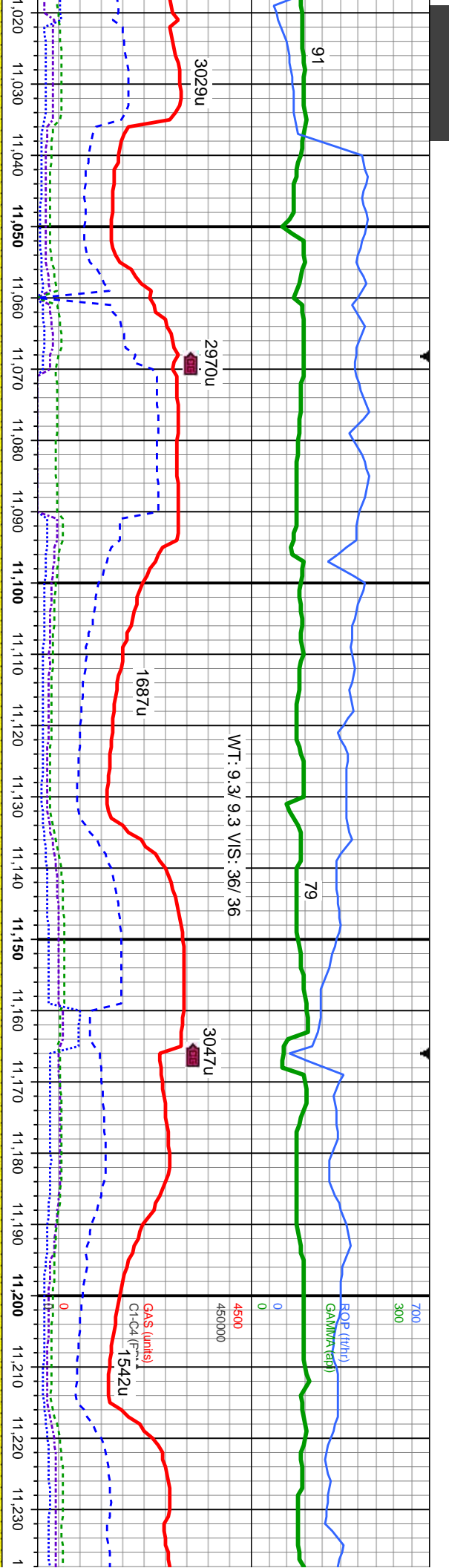












6.°
3.°

MD: 11,107'
TVD: 7,351.76'
Inclination: 89.5 °
Azimuth: 181.2 °
VS: 3,337.52'

MD: 11,203'
TVD: 7,351.93'
Inclination: 90.3 °
Azimuth: 181.2 °
VS: 3,433.51'

SS: med brn - gy brn, occ dk gy brn, trns l - clr gr, v f - f gr, sb rnd - sb
it - fri, w srt, mod - p cons ip, tt clus, arg mix ip, sl calc; OIL SHOW: bl-gn
east difse, tr-mod yel min flor, solid gn resd stn, no od

100% SHY SS: med brn - gy brn, occ dk gy brn, trns l - clr gr, v f - f gr, sb rnd - sb ang, hd,
brit - fri, w srt, mod - p cons ip, tt clus, arg mix ip, sl calc; OIL SHOW: mod difse, tr yel min
flor, bl-wh string, bl-wh mky cut, mod gn-bl stn, no od

100% SHY SS: med brn - gy b
hd, brit - fri, w srt, mod - p cons
difse, tr yel min flor, bl-wh string



MINDEPTH

11/26/13

ROP (ft/hr)
GAMMA (api)

77

76

12

IS: 37/ 37

WT: 9.3/ 9.3 VIS: 37/ 37

WT: 9.3/ 9.3 VIS: 37/ 37

WT: 9.2+/ 9.3 VIS: 37/ 38

4500

450000

2442u

GAS (units)
Cl-C4 (PPM)

2474u

2262u

1933u

11,460 11,470 11,480 11,490 11,500 11,510 11,520 11,530 11,540 11,550 11,560 11,570 11,580 11,590 11,600 11,610 11,620 11,630 11,640 11,650 11,660 11,670 1

MD: 11,488'

TVD: 7,346.79'

Inclination: 90.7°

Azimuth: 181.6°

VS: 3,718.42'

MD: 11,583'

TVD: 7,346.71'

Inclination: 89.4°

Azimuth: 181.7°

VS: 3,813.39'

6900

MD: 11,67

TVD: 7,34

Inclination:

Azimuth: 1

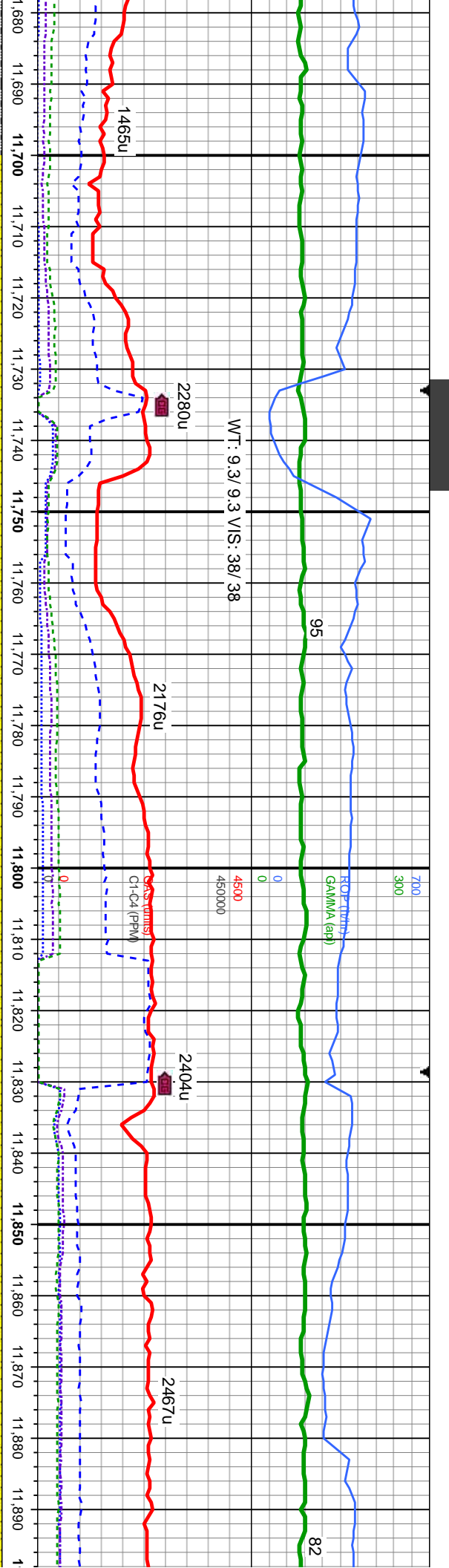
VS: 3,907.

tnsl - clr gr, vf - f gr, sb rnd - sb ang,
x lp, mod calc; OIL SHOW: bl-gn
resd sln, no od

100% SHY SS: med brn - gy brn, occ dk gy brn, tnsl - clr gr, vf - f gr, sb rnd - sb ang, hd,
brit - fri, w srt, mod - p cons lp, tt clus, arg mlt ip, mod calc, tr ls; OIL SHOW: bl-gn string
cut, fast dfse, tr-mod yel mln flor, solid gn resd sln, no od

100% SHY SS: med brn - gy brn, occ dk gy brn, tnsl - clr gr, vf - f gr, sb rnd - sb ang, hd, brit - fri, w srt, mod - p cons lp, tt clus, arg mlt ip, mod calc
bl-gn string cut, fast dfse, tr-mod yel mln flor, solid gn resd sln, no od





7'
3.17'
87.6 °
80.2 °
35'

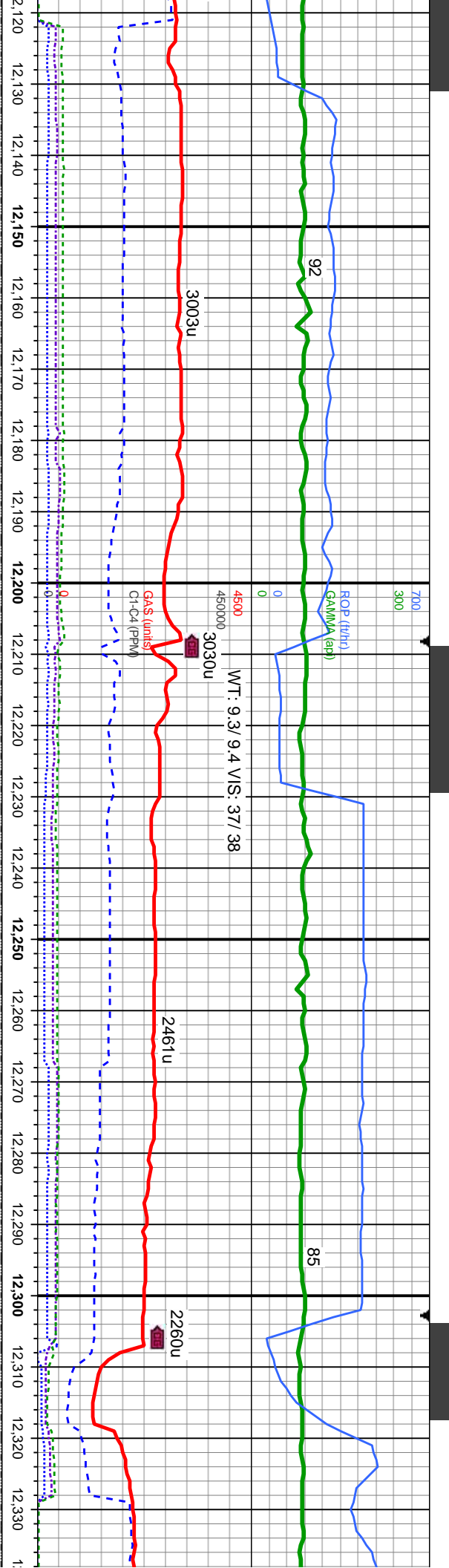
MD: 11,773'
TVD: 7,352.02'
Inclination: 89 °
Azimuth: 180.1 °
VS: 4,003.31'

MD: 11,869'
TVD: 7,352.6'
Inclination: 90.3 °
Azimuth: 179.8 °
VS: 4,099.3'

100% SHY SS: med brn - gy brn, occ dk gy brn, trnsi - clr gr, vf - f gr, sb rnd - sb ang, hd, brit - fri, w srt, mod - p cons ip, tt clus, arg mtx ip, mod calc, tr ls; OIL SHOW: gn stmg cut, mod dfse, tr-mod yel-gn min flor, solid gn resd sh, no od

100% SHY SS: med brn - gy brn, occ dk gy brn, trnsi - clr gr, vf - f gr, sb rnd - sb ang, hd, brit - fri, w srt, mod - p cons ip, tt clus, arg mtx ip, mod calc; OIL SHOW: gn stmg cut, mod dfse, tr-mod yel-gn min flor, solid gn resd sh, no od





MD: 12,153'
TVD: 7,353.18'
Inclination: 90 °
Azimuth: 180.6°
VS: 4,383.29'

MD: 12,248'
TVD: 7,353.43'
Inclination: 89.7 °
Azimuth: 180.8°
VS: 4,478.29'

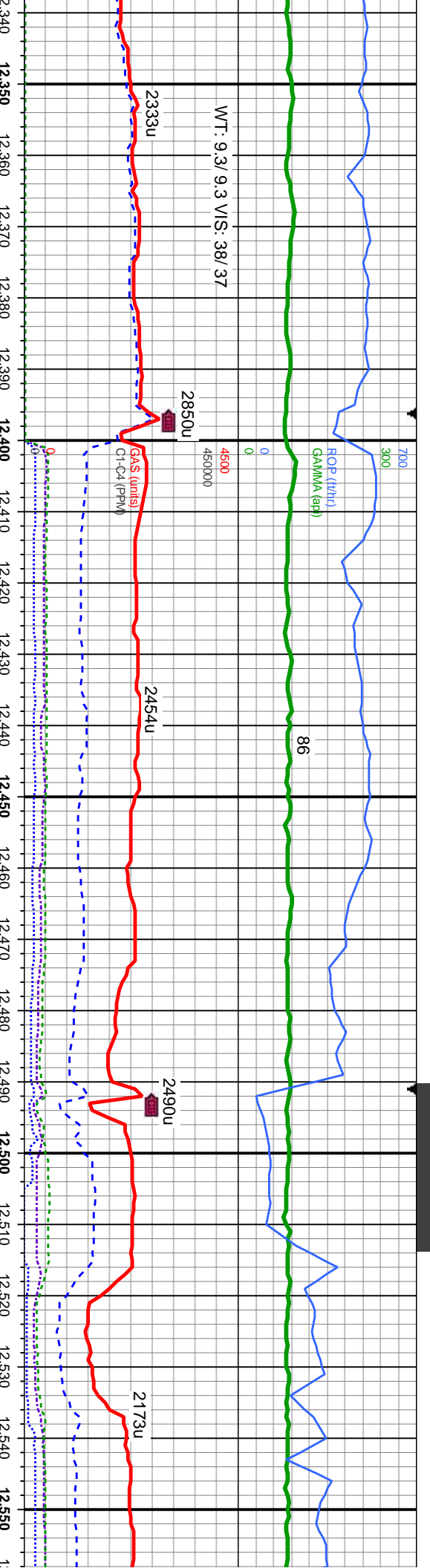
MD: 1
TVD: 1
Inclin:
Azimu
VS: 4

- med brn, occ wh, tmsl - clr gr, vf - f gr, sb md - sb ang, mod - v hd, brit - fri
s, tt clus, mod cmt, 10% SLTY SH: dk - med gy, sdy ip, frm, brit, sb ply - sb
sily mtx, pred non calc, sl calc ip

90% SHY SS: lt - med brn, occ wh, tmsl - clr gr, vf - f gr, sb md - sb ang, mod - v hd,
brit - fri ip, mod srt, cons, tt clus, mod cmt, 10% SLTY SH: dk - med gy, sdy ip, frm, brit,
sb ply - sb blk, gt tex, arg - sily mtx, pred non calc, sl calc ip; OIL SHOW: gn stmg cut,
mod dfse, tr-mod yel-gn min flr, solid gn resd sh, no od

90% SHY SS: lt - med brn, occ wh
- fri ip, mod srt, cons, tt clus, mod
ply - sb blk, gt tex, arg - sily mtx
mod dfse, tr-mod yel-gn min flr,





2,342'
7,354.08'
Inclination: 89.5 °
Azimuth: 180.4 °
VS: 572.29'

MD: 12,436'
TV/D: 7,353.76'
Inclination: 90.9 °
Azimuth: 180 °
VS: 4,666.28'

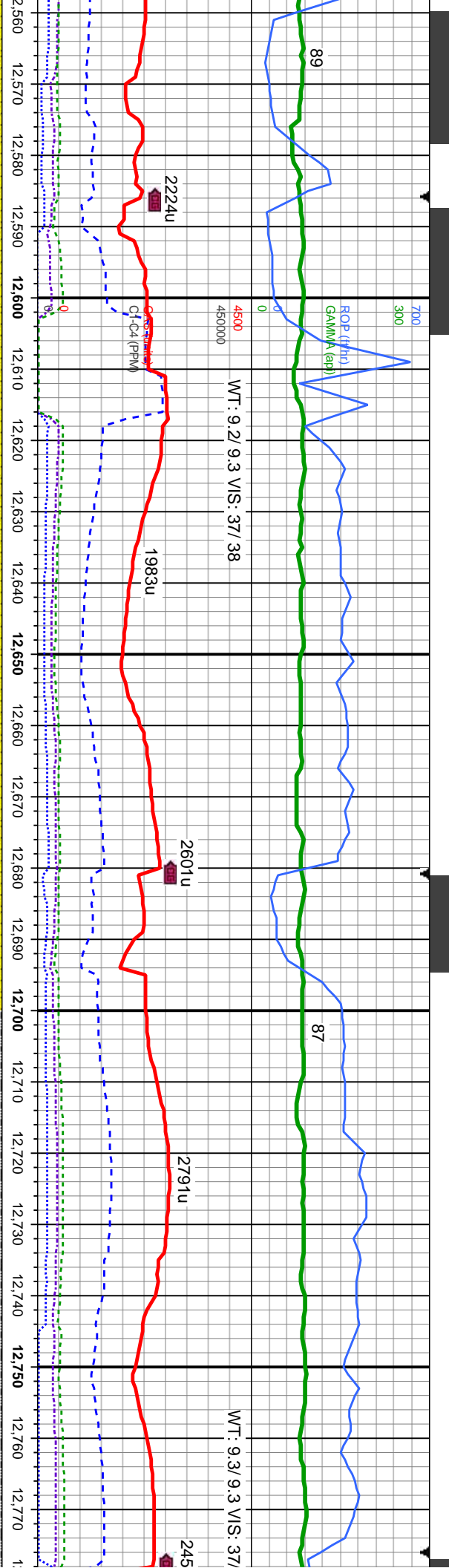
MD: 12,531'
TV/D: 7,352.43'
Inclination: 90.7 °
Azimuth: 180.2 °
VS: 4,761.27'

h, trnsl - clr gr, vf - f gr, sb rnd - sb ang, mod - v hd, brit
cnt, 10% SLTY SH: dk - med gy, sdy ip, frm, brit, sb
, pred non calc, sl calc ip; OIL SHOW: gn stmg cut,
solid gn resdl stn, no od

100% SHY SS: med brn - gy brn, occ dk gy brn, trnsl - clr gr, vf - f gr, sb rnd - sb ang,
hd, brit - fri, w srl, mod - p cons ip, tt clus, sl-mod calc; OIL SHOW: gn-bi stmg cut,
mod-fast difse, tr-mod yel-gn mln flor, solid gn resdl stn, no od

100% SHY SS: med brn - gy brn, occ dk gy brn, trnsl - clr gr, vf - f gr, sb rnd - sb ang,
hd, brit - fri, w srl, mod - p cons ip, tt clus, sl-mod calc; OIL SHOW: gn-bi stmg cut,
mod-fast difse, tr-mod yel-gn mln flor, solid gn resdl



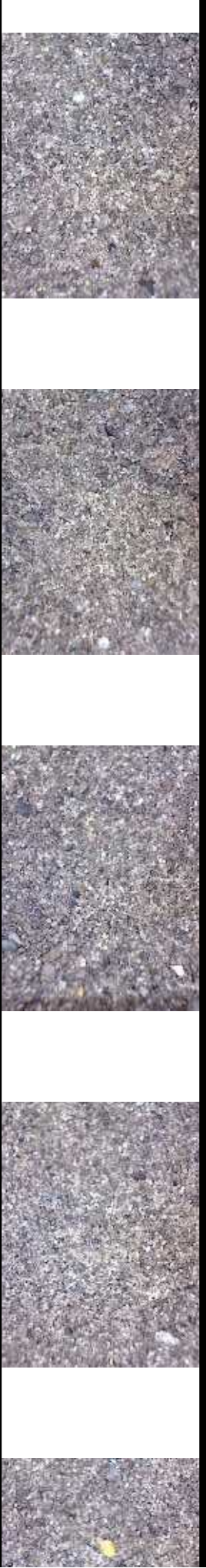


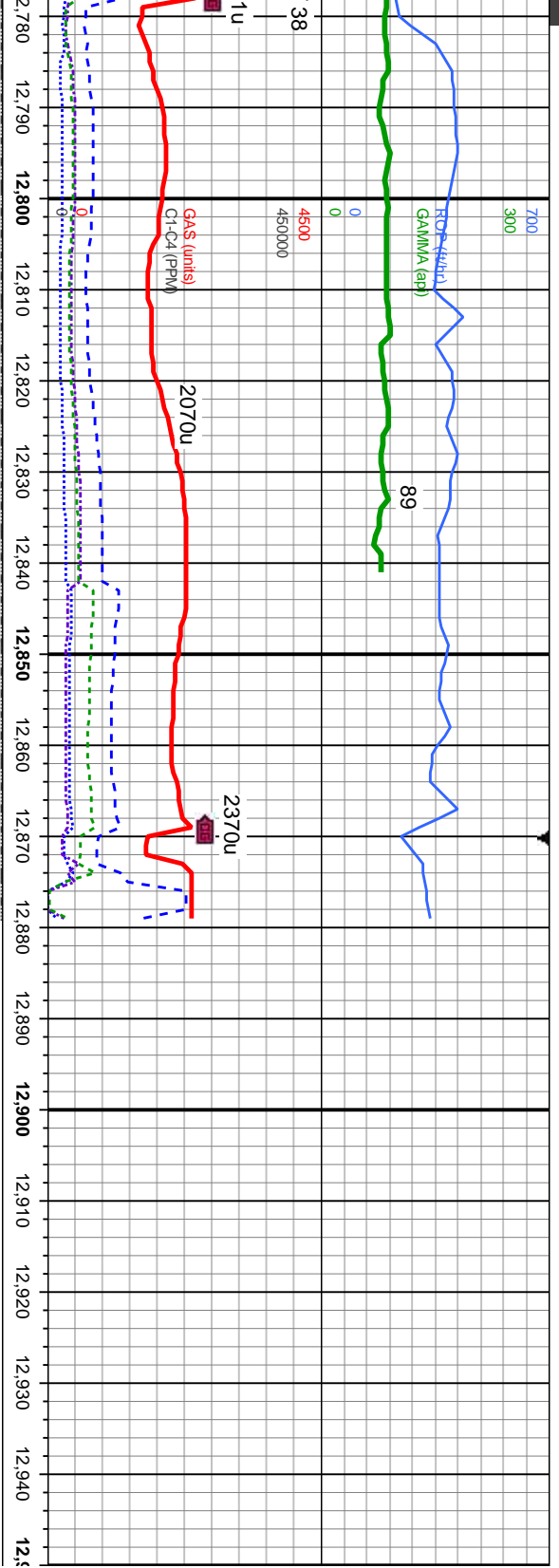
MD: 12,625'
TVD: 7,352.68'
Inclination: 89 °
Azimuth: 181.1 °
VS: 4,855.27'

MD: 12,720'
TVD: 7,354.75'
Inclination: 88.5 °
Azimuth: 181 °
VS: 4,950.24'

sl - clr gr, vf - f gr, sb rnd - sb ang, 100% SHY SS: med brn - gy brn, occ dk gy brn, trns - clr gr, vf - f gr, sb rnd - sb ang, hd, brit - fri, w srt, mod - p cons ip, tt clus, mod calc; OIL SHOW: mod difse, tr yel min
stn, no od
7900
flor, bl-wh stmg, bl-wh mky cut, mod gn-bl stn, no od

90% SHY SS: lt - med brn, occ wh, trns - clr gr, vf - f gr, sb rnd - sb ar - fri ip, mod srt, cons, tt clus, mod cmt, 10% SLTY SH: dk - med gy, sc pty - sb blk, gt tex, arg - silty mt, pred non calc, sl calc ip, com dissr SHOW: mod difse, tr yel min flor, bl-wh stmg, bl-wh mky cut, mod gn-bl





BIT PROJECTION:

MD: 12,823'
TVD: 7,356.46'
Inclination: 89.6 °
Azimuth: 181.2°
VS: 5,053.21'

MD: 12,879'
TVD: 7,356.8'
Inclination: 89.6 °
Azimuth: 181.2°

Wilkner-Vance 35C-1HZ Wellbore TD @
12879' MD @ 11:00 HRS MST on 11/26/13

Thank you for using Columbine Logging, Inc.

90% SHY SS: lt - med brn, occ wh, trns l - clr gr, vf - f gr, sb rnd - sb ang, mod - v hd, brit
- fri ip, mod srt, cons, tt clus, mod cmt, 10% SLTY SH: dk - med gy, sdy ip, frm, brit, sb
ply - sb blk, gt tex, arg - silty mt, pred non calc, sl calc ip, com diss pyr, tr glau: OIL
SHOW: mod dtse, tr yel min flr, bl-wh stng, bl-wh mky cut, mod gn-bl stn, no od

