

**ANADARKO PETROLEUM CORP - EBUS
DO NOT MAIL - PO BOX 4995
THE WOODLANDS, Texas**

Wirkner Vance 35C-1HZ

MAJORS 42

Post Job Summary **Cement Surface Casing**

Prepared for:
Date Prepared: 10/24/2013
Version: 1

Service Supervisor: BARRAS, JOSEPH

Submitted by: FINNEY, SEAN

HALLIBURTON

HALLIBURTON

Wellbore Geometry

Job Tubulars					MD		Shoe Joint Length ft
Type	Description	Size in	ID in	Wt lbm/ft	Top ft	Bottom ft	
Casing	9 5/8" Surface Casing	9.63	8.921	36.00	0.00	1,011.00	42.00
Open Hole Section	13 1/2" Open Hole Section		13.500		0.00	1,011.00	0.00

HALLIBURTON

Pumping Schedule

Stage / Plug #	Fluid #	Fluid Type	Fluid Name	Surface Density lbm/gal	Avg Rate bbl/min	Surface Volume	Downhole Volume
1	1	Spacer	Fresh Water Spacer	8.33	4.00	10.0 bbl	10.0 bbl
1	2	Spacer	Mud Flush	8.40	4.00	12.0 bbl	12.0 bbl
1	1	Spacer	Fresh Water Spacer	8.33	4.00	10.0 bbl	10.0 bbl
1	3	Cement Slurry	SwiftCem B2	14.20	5.00	382.0 sacks	382.0 sacks

Fluids Pumped

Stage/Plug # 1 Fluid 1: Fresh Water Spacer
DUMMY MUD / FLUSH / SPACER SBC MATERIAL

Fluid Density: 8.33 lbm/gal
Pump Rate: 4.00 bbl/min

Stage/Plug # 1 Fluid 2: Mud Flush
DUMMY MUD / FLUSH / SPACER SBC MATERIAL
3.33 lbm/bbl Mud Flush III
42 gal/bbl Mud Flush III

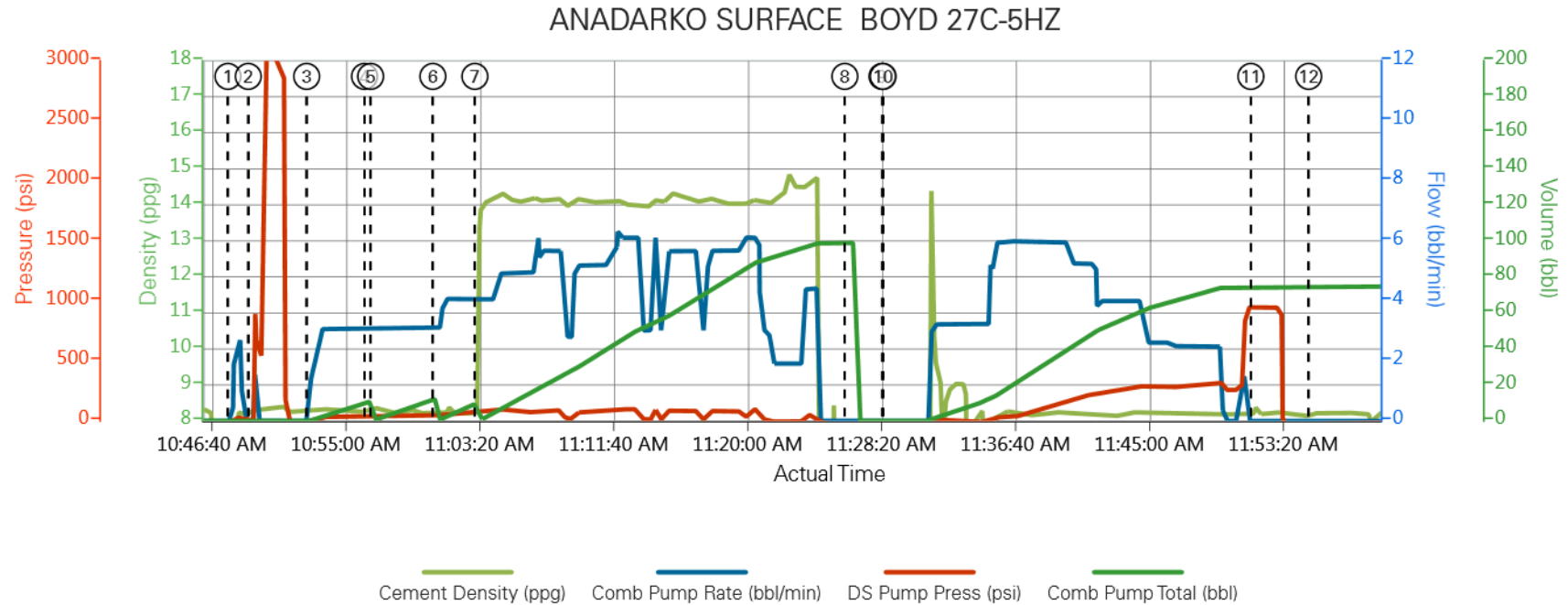
Fluid Density: 8.40 lbm/gal
Fluid Volume: 12.00 bbl
Pump Rate: 4.00 bbl/min

Stage/Plug # 1 Fluid 3: SwiftCem B2
SWIFTCEM (TM) SYSTEM

Fluid Weight: 14.20 lbm/gal
Slurry Yield: 1.54 ft³/sack
Total Mixing Fluid: 7.66 Gal
Surface Volume: 382.0 sacks
Sacks: 382.0 sacks
Calculated Fill: 900.00 ft
Calculated Top of Fluid: 0.00 ft

HALLIBURTON

Data Acquisition



HALLIBURTON

Service Supervisor Reports

Job Log

Date/Time	Chart #	Activity Code	Pump Rate	Cum Vol	Pump		Pressure (psig)	Comments
10/12/2013 18:10		Arrive at Location from Service Center						rig starting to run casing due to breakdown
10/12/2013 18:15		Rig-Up Equipment						rigging up HES trucks
10/12/2013 19:10		Rig-Up Completed						
10/12/2013 21:00		Casing on Bottom						
10/12/2013 21:20		Safety Meeting - Pre Job						with HES and rig crew
10/12/2013 21:37		Start Job						
10/12/2013 21:39		Test Lines						test lines to 2000 psi noi visible leaks
10/12/2013 21:43		Pump Spacer 1	4	10			47.0	rig water
10/12/2013 21:46		Pump Spacer 2	4	12			51.0	rig water with mud flush
10/12/2013 21:50		Pump Spacer 1	4	10			51.0	rig water
10/12/2013 21:53		Pump Cement	5	105			102.0	mixed with rig water @ 14.2 ppg /382 sks of swiftcem 1.54 yeild/7.66 gal/sk
10/12/2013 22:19		Shutdown						
10/12/2013 22:20		Drop Top Plug						loaded in casing / pumped with quick-latch swedge
10/12/2013 22:23		Pump Displacement	5	75			368.0	rig water with cement back to surface @ 60 bbl into displacing
10/12/2013 22:44		Bump Plug	2				941.0	
10/12/2013 22:46		Check Floats						held with 1 bbl back
10/12/2013 22:47		End Job						
10/12/2013 22:50		Safety Meeting - Pre Rig-Down						with HES
10/12/2013 23:00		Rig-Down Equipment						
10/12/2013 23:59		Return to Service Center from Job						

The Road to Excellence Starts with Safety

Sold To #: 300466	Ship To #: 3110496	Quote #:	Sales Order #: 900816975
Customer: ANADARKO PETROLEUM CORP - EBUS		Customer Rep: Porter, Bob	
Well Name: Wirkner Vance		Well #: 35C-1HZ	API/UWI #:
Field: WATTENBERG	City (SAP): FORT LUPTON	County/Parish: Weld	State: Colorado
Contractor: MAJORS		Rig/Platform Name/Num: MAJORS 42	
Job Purpose: Cement Surface Casing			
Well Type: Development Well		Job Type: Cement Surface Casing	
Sales Person: FLING, MATTHEW	Srvc Supervisor: BARRAS, JOSEPH		MBU ID Emp #: 405168

Job Personnel

HES Emp Name	Exp Hrs	Emp #	HES Emp Name	Exp Hrs	Emp #	HES Emp Name	Exp Hrs	Emp #
BANUELOS, GUADALUPE	0.0	372277	BARRAS, JOSEPH Corey	0.0	405168			

Equipment

HES Unit #	Distance-1 way	HES Unit #	Distance-1 way	HES Unit #	Distance-1 way	HES Unit #	Distance-1 way
11398319	15 mile	11488570C	15 mile	11562546C	15 mile		

Job Hours

Date	On Location Hours	Operating Hours	Date	On Location Hours	Operating Hours	Date	On Location Hours	Operating Hours
TOTAL			Total is the sum of each column separately					

Job

Job Times

Formation Name					Date	Time	Time Zone
Formation Depth (MD)	Top		Bottom		Called Out	12 - Oct - 2013	15:00
Form Type		BHST			On Location		
Job depth MD	1011. ft	Job Depth TVD	1011. ft		Job Started	12 - Oct - 2013	21:37
Water Depth		Wk Ht Above Floor	5. ft		Job Completed	12 - Oct - 2013	22:47
Perforation Depth (MD)	From		To		Departed Loc	12 - Oct - 2013	00:00

Well Data

Description	New / Used	Max pressure psig	Size in	ID in	Weight lbm/ft	Thread	Grade	Top MD ft	Bottom MD ft	Top TVD ft	Bottom TVD ft
13 1/2" Open Hole Section				13.5				.	1011.		
9 5/8" Surface Casing	Unknown		9.625	8.921	36.		J-55	.	1011.		

Sales/Rental/3rd Party (HES)

Description	Qty	Qty uom	Depth	Supplier
CMT CASING EQUIPMENT BOM	1	JOB		
MILEAGE FOR CEMENTING CREW,ZI	30	MI		
ZI FUEL SURCHG-CARS/PICKUPS<1 1/2TON	30	MI		
KIT,HALL WELD-A	1	EA		
CNTRLZR, 9 5/8"x13 3/4',#500-0963-1375	7	EA		
BASKET - CEMENT - 9-5/8 CSG X 12-1/4	1	EA		
PLUG,CMTG,TOP,9 5/8,HWE,8.16 MIN/9.06 MA	1	EA		
Description	Qty	Qty uom	Depth	Supplier

COLLAR-STOP-9 5/8"-FRICTION-HINGED					2	EA			
Fluid Data									
Stage/Plug #: 1									
Fluid #	Stage Type	Fluid Name	Qty	Qty uom	Mixing Density lbm/gal	Yield ft ³ /sk	Mix Fluid Gal/sk	Rate bbl/min	Total Mix Fluid Gal/sk
1	Fresh Water Spacer		10.0	bbl	8.33			4.0	
2	Mud Flush		12.00	bbl	8.4			4.0	
3.33 lbm/bbl		MUD FLUSH III, 40 LB SACK (101633304)							
42 gal/bbl		MUD FLUSH III - SBM (528788)							
3	SwiftCem B2	SWIFTCM (TM) SYSTEM (452990)	382.0	sacks	14.2	1.54	7.66	5.0	7.66
7.66 Gal		FRESH WATER							
Calculated Values		Pressures		Volumes					
Displacement		Shut In: Instant		Lost Returns		Cement Slurry		Pad	
Top Of Cement		5 Min		Cement Returns		Actual Displacement	75.0	Treatment	
Frac Gradient		15 Min		Spacers		Load and Breakdown		Total Job	
Rates									
Circulating		Mixing		Displacement		Avg. Job			
Cement Left In Pipe	Amount	42 ft	Reason	Shoe Joint					
Frac Ring # 1 @	ID	Frac ring # 2 @	ID	Frac Ring # 3 @	ID	Frac Ring # 4 @	ID		
The Information Stated Herein Is Correct				Customer Representative Signature					

