

BILL BARRETT CORP

WELD COUNTY, COLORADO

Anschutz State 4-62-2 Pad

Anschutz State 4-62-2-1721BH2

Wellbore #1

Plan: Design #1

Standard Planning Report

13 January, 2014



Bill Barrett Corporation

COMPANY DETAILS: BILL BARRETT CORP

Calculation Method: Minimum Curvature
Error System: ISCWSA
Scan Method: Closest Approach 3D
Error Surface: Elliptical Conic
Warning Method: Error Ratio

REFERENCE INFORMATION

Co-ordinate (N/E) Reference: Well Anschutz State 4-62-2-1721BH2, True North
Vertical (TVD) Reference: KB @ 4566.0ft (Original Well Elev)
Section (VS) Reference: Slot - (0.0N, 0.0E)
Measured Depth Reference: KB @ 4566.0ft (Original Well Elev)
Calculation Method: Minimum Curvature

WELL DETAILS: Anschutz State 4-62-2-1721BH2

+N/-S	+E/-W	Northing	Easting	Latitude	Longitude
0.0	0.0	1370686.79	3333996.95	40° 20' 41.070 N	104° 18' 6.170 W

SECTION DETAILS

Sec	MD	Inc	Azi	TVD	+N/-S	+E/-W	DLeg	TFace	VSec	Target
1	0.0	0.00	0.00	0.0	0.0	0.0	0.00	0.00	0.0	
2	1000.0	0.00	0.00	1000.0	0.0	0.0	0.00	0.00	0.0	
3	1158.0	3.16	258.83	1157.9	-0.8	-4.3	2.00	258.83	-4.3	
4	5211.8	3.16	258.83	5205.6	-44.1	-223.5	0.00	0.00	-224.1	
5	5369.9	0.00	88.96	5363.5	-45.0	-227.8	2.00	180.00	-228.4	
6	5619.9	0.00	88.96	5613.5	-45.0	-227.8	0.00	88.96	-228.4	
7	6372.0	90.25	88.96	6091.0	-36.3	251.7	12.00	88.96	251.2	AS 2-1721BH2 LP
8	14324.3	90.25	88.96	6056.0	107.5	8202.6	0.00	0.00	8203.3	AS 2-1721BH2 PBHL

PROJECT DETAILS: WELD COUNTY, COLORADO

Geodetic System: US State Plane 1983
Datum: North American Datum 1983
Ellipsoid: GRS 1980
Zone: Colorado Northern Zone

FORMATION TOP DETAILS

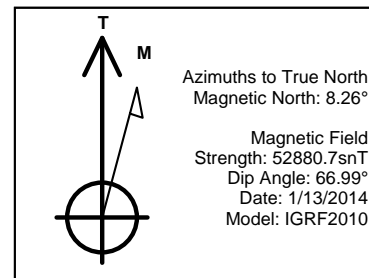
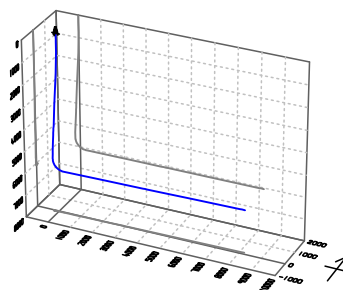
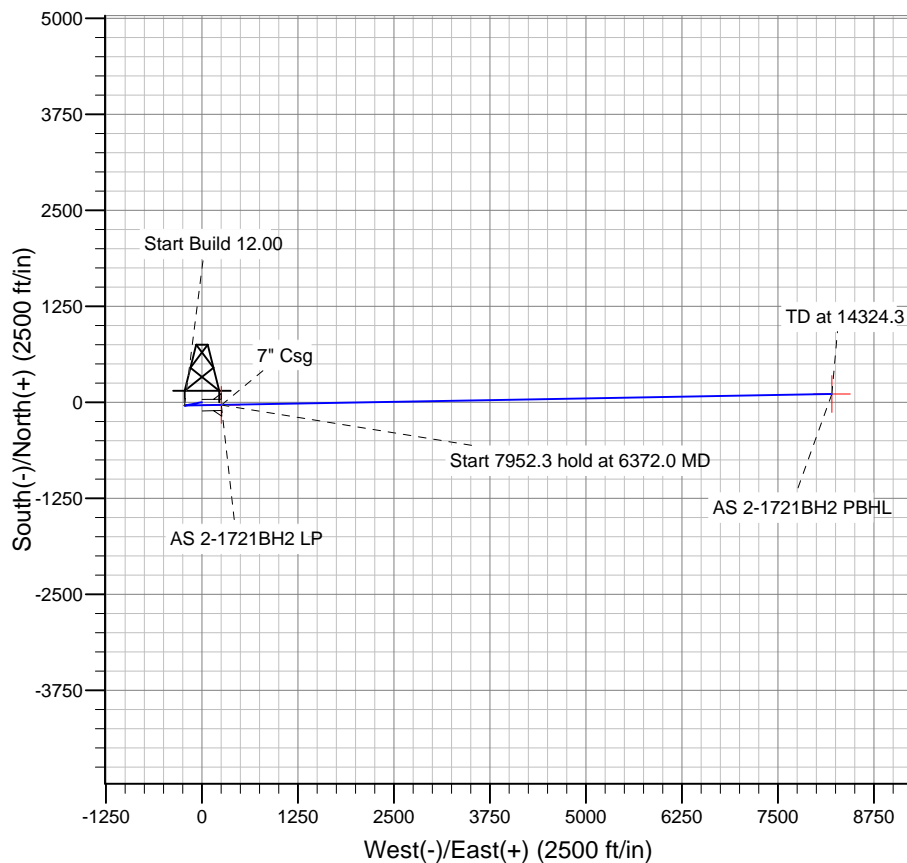
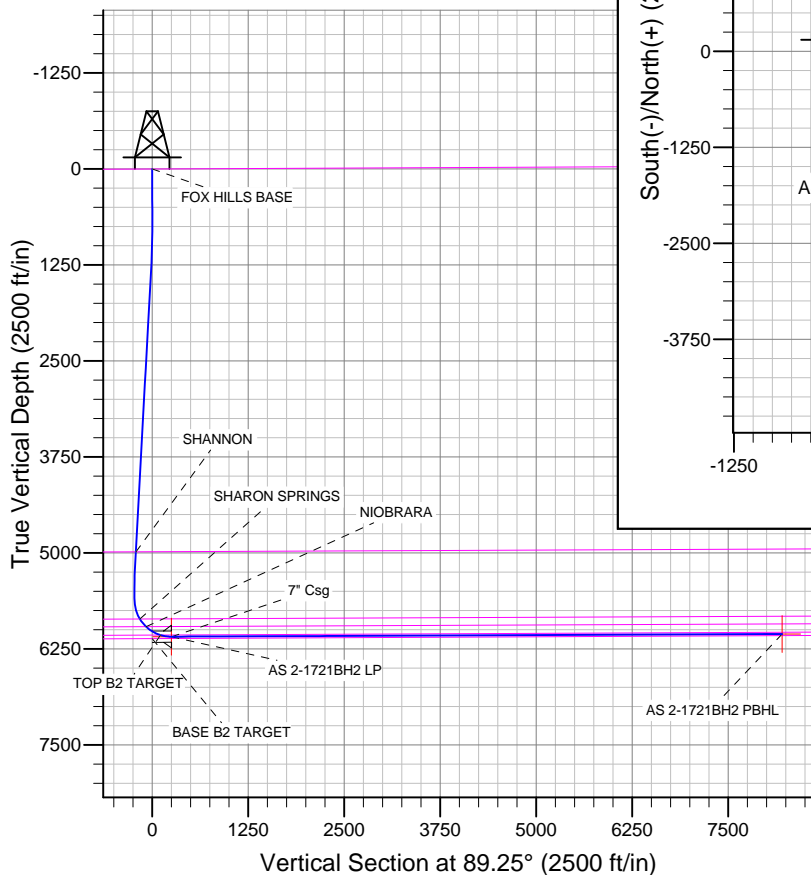
TVDPath	MDPath	Formation
		BASE B2 TARGET
		FOX HILLS BASE
4987.9	4993.8	SHANNON
5861.7	5880.8	SHARON SPRINGS
5961.3	6009.5	NIOBRARA
6069.5	6226.1	TOP B2 TARGET

WELLBORE TARGET DETAILS

Name	TVD	+N/-S	+E/-W	Shape
AS 2-1721BH2 PBHL	6056.0	107.5	8202.6	Point
AS 2-1721BH2 LP	6091.0	-36.3	251.7	Point

CASING DETAILS

TVD	MD	Name	Size
6091.0	6375.0	7" Csg	7



Bill Barrett Corp

Planning Report

Database:	Compass	Local Co-ordinate Reference:	Well Anschutz State 4-62-2-1721BH2
Company:	BILL BARRETT CORP	TVD Reference:	KB @ 4566.0ft (Original Well Elev)
Project:	WELD COUNTY, COLORADO	MD Reference:	KB @ 4566.0ft (Original Well Elev)
Site:	Anschutz State 4-62-2 Pad	North Reference:	True
Well:	Anschutz State 4-62-2-1721BH2	Survey Calculation Method:	Minimum Curvature
Wellbore:	Wellbore #1		
Design:	Design #1		

Project	WELD COUNTY, COLORADO		
Map System:	US State Plane 1983	System Datum:	Mean Sea Level
Geo Datum:	North American Datum 1983		
Map Zone:	Colorado Northern Zone		

Site		Anschutz State 4-62-2 Pad			
Site Position:		Northing:	1,370,746.63ft	Latitude:	40° 20' 41.662 N
From:	Lat/Long	Easting:	3,333,993.88ft	Longitude:	104° 18' 6.199 W
Position Uncertainty:	0.0 ft	Slot Radius:	"	Grid Convergence:	0.77 °

Well	Anschutz State 4-62-2-1721BH2					
Well Position	+N-S	-59.9 ft	Northing:	1,370,686.79 ft	Latitude:	40° 20' 41.070 N
	+E-W	2.3 ft	Easting:	3,333,996.95 ft	Longitude:	104° 18' 6.170 W
Position Uncertainty		0.0 ft	Wellhead Elevation:	ft	Ground Level:	4,544.0 ft

Wellbore	Wellbore #1				
Magnetics	Model Name	Sample Date	Declination (°)	Dip Angle (°)	Field Strength (nT)
	IGRF2010	1/13/2014	8.26	66.99	52,881

Design	Design #1			
Audit Notes:				
Version:	Phase:	PLAN	Tie On Depth:	0.0
Vertical Section:	Depth From (TVD) (ft)	+N/-S (ft)	+E/-W (ft)	Direction (°)
	0.0	0.0	0.0	89.25

Plan Sections										
Measured Depth (ft)	Inclination (°)	Azimuth (°)	Vertical Depth (ft)	+N/-S (ft)	+E/-W (ft)	Dogleg Rate (°/100ft)	Build Rate (°/100ft)	Turn Rate (°/100ft)	TFO (°)	Target
0.0	0.00	0.00	0.0	0.0	0.0	0.00	0.00	0.00	0.00	
1,000.0	0.00	0.00	1,000.0	0.0	0.0	0.00	0.00	0.00	0.00	
1,158.0	3.16	258.83	1,157.9	-0.8	-4.3	2.00	2.00	0.00	258.83	
5,211.8	3.16	258.83	5,205.6	-44.1	-223.5	0.00	0.00	0.00	0.00	
5,369.9	0.00	88.96	5,363.5	-45.0	-227.8	2.00	-2.00	0.00	180.00	
5,619.9	0.00	88.96	5,613.5	-45.0	-227.8	0.00	0.00	0.00	88.96	
6,372.0	90.25	88.96	6,091.0	-36.3	251.7	12.00	12.00	0.00	88.96	AS 2-1721BH2 LP
14,324.3	90.25	88.96	6,056.0	107.5	8,202.6	0.00	0.00	0.00	0.00	AS 2-1721BH2 PB

Bill Barrett Corp

Planning Report

Database:	Compass	Local Co-ordinate Reference:	Well Anschutz State 4-62-2-1721BH2
Company:	BILL BARRETT CORP	TVD Reference:	KB @ 4566.0ft (Original Well Elev)
Project:	WELD COUNTY, COLORADO	MD Reference:	KB @ 4566.0ft (Original Well Elev)
Site:	Anschutz State 4-62-2 Pad	North Reference:	True
Well:	Anschutz State 4-62-2-1721BH2	Survey Calculation Method:	Minimum Curvature
Wellbore:	Wellbore #1		
Design:	Design #1		

Planned Survey									
Measured Depth (ft)	Inclination (°)	Azimuth (°)	Vertical Depth (ft)	+N/-S (ft)	+E/-W (ft)	Vertical Section (ft)	Dogleg Rate (°/100ft)	Build Rate (°/100ft)	Turn Rate (°/100ft)
0.0	0.00	0.00	0.0	0.0	0.0	0.0	0.00	0.00	0.00
100.0	0.00	0.00	100.0	0.0	0.0	0.0	0.00	0.00	0.00
200.0	0.00	0.00	200.0	0.0	0.0	0.0	0.00	0.00	0.00
300.0	0.00	0.00	300.0	0.0	0.0	0.0	0.00	0.00	0.00
400.0	0.00	0.00	400.0	0.0	0.0	0.0	0.00	0.00	0.00
500.0	0.00	0.00	500.0	0.0	0.0	0.0	0.00	0.00	0.00
600.0	0.00	0.00	600.0	0.0	0.0	0.0	0.00	0.00	0.00
700.0	0.00	0.00	700.0	0.0	0.0	0.0	0.00	0.00	0.00
800.0	0.00	0.00	800.0	0.0	0.0	0.0	0.00	0.00	0.00
900.0	0.00	0.00	900.0	0.0	0.0	0.0	0.00	0.00	0.00
1,000.0	0.00	0.00	1,000.0	0.0	0.0	0.0	0.00	0.00	0.00
1,100.0	2.00	258.83	1,100.0	-0.3	-1.7	-1.7	2.00	2.00	0.00
1,158.0	3.16	258.83	1,157.9	-0.8	-4.3	-4.3	2.00	2.00	0.00
1,200.0	3.16	258.83	1,199.9	-1.3	-6.5	-6.6	0.00	0.00	0.00
1,300.0	3.16	258.83	1,299.7	-2.4	-12.0	-12.0	0.00	0.00	0.00
1,400.0	3.16	258.83	1,399.6	-3.4	-17.4	-17.4	0.00	0.00	0.00
1,500.0	3.16	258.83	1,499.4	-4.5	-22.8	-22.8	0.00	0.00	0.00
1,600.0	3.16	258.83	1,599.2	-5.6	-28.2	-28.3	0.00	0.00	0.00
1,700.0	3.16	258.83	1,699.1	-6.6	-33.6	-33.7	0.00	0.00	0.00
1,800.0	3.16	258.83	1,798.9	-7.7	-39.0	-39.1	0.00	0.00	0.00
1,900.0	3.16	258.83	1,898.8	-8.8	-44.4	-44.5	0.00	0.00	0.00
2,000.0	3.16	258.83	1,998.6	-9.8	-49.8	-49.9	0.00	0.00	0.00
2,100.0	3.16	258.83	2,098.5	-10.9	-55.2	-55.4	0.00	0.00	0.00
2,200.0	3.16	258.83	2,198.3	-12.0	-60.6	-60.8	0.00	0.00	0.00
2,300.0	3.16	258.83	2,298.2	-13.0	-66.0	-66.2	0.00	0.00	0.00
2,400.0	3.16	258.83	2,398.0	-14.1	-71.5	-71.6	0.00	0.00	0.00
2,500.0	3.16	258.83	2,497.9	-15.2	-76.9	-77.1	0.00	0.00	0.00
2,600.0	3.16	258.83	2,597.7	-16.2	-82.3	-82.5	0.00	0.00	0.00
2,700.0	3.16	258.83	2,697.6	-17.3	-87.7	-87.9	0.00	0.00	0.00
2,800.0	3.16	258.83	2,797.4	-18.4	-93.1	-93.3	0.00	0.00	0.00
2,900.0	3.16	258.83	2,897.3	-19.4	-98.5	-98.7	0.00	0.00	0.00
3,000.0	3.16	258.83	2,997.1	-20.5	-103.9	-104.2	0.00	0.00	0.00
3,100.0	3.16	258.83	3,097.0	-21.6	-109.3	-109.6	0.00	0.00	0.00
3,200.0	3.16	258.83	3,196.8	-22.6	-114.7	-115.0	0.00	0.00	0.00
3,300.0	3.16	258.83	3,296.7	-23.7	-120.1	-120.4	0.00	0.00	0.00
3,400.0	3.16	258.83	3,396.5	-24.8	-125.5	-125.9	0.00	0.00	0.00
3,500.0	3.16	258.83	3,496.4	-25.8	-131.0	-131.3	0.00	0.00	0.00
3,600.0	3.16	258.83	3,596.2	-26.9	-136.4	-136.7	0.00	0.00	0.00
3,700.0	3.16	258.83	3,696.1	-28.0	-141.8	-142.1	0.00	0.00	0.00
3,800.0	3.16	258.83	3,795.9	-29.1	-147.2	-147.5	0.00	0.00	0.00
3,900.0	3.16	258.83	3,895.7	-30.1	-152.6	-153.0	0.00	0.00	0.00
4,000.0	3.16	258.83	3,995.6	-31.2	-158.0	-158.4	0.00	0.00	0.00
4,100.0	3.16	258.83	4,095.4	-32.3	-163.4	-163.8	0.00	0.00	0.00
4,200.0	3.16	258.83	4,195.3	-33.3	-168.8	-169.2	0.00	0.00	0.00
4,300.0	3.16	258.83	4,295.1	-34.4	-174.2	-174.7	0.00	0.00	0.00
4,400.0	3.16	258.83	4,395.0	-35.5	-179.6	-180.1	0.00	0.00	0.00
4,500.0	3.16	258.83	4,494.8	-36.5	-185.0	-185.5	0.00	0.00	0.00
4,600.0	3.16	258.83	4,594.7	-37.6	-190.5	-190.9	0.00	0.00	0.00
4,700.0	3.16	258.83	4,694.5	-38.7	-195.9	-196.3	0.00	0.00	0.00
4,800.0	3.16	258.83	4,794.4	-39.7	-201.3	-201.8	0.00	0.00	0.00
4,900.0	3.16	258.83	4,894.2	-40.8	-206.7	-207.2	0.00	0.00	0.00
4,993.8	3.16	258.83	4,987.9	-41.8	-211.8	-212.3	0.00	0.00	0.00
SHANNON									
5,000.0	3.16	258.83	4,994.1	-41.9	-212.1	-212.6	0.00	0.00	0.00

Bill Barrett Corp

Planning Report

Database:	Compass	Local Co-ordinate Reference:	Well Anschutz State 4-62-2-1721BH2
Company:	BILL BARRETT CORP	TVD Reference:	KB @ 4566.0ft (Original Well Elev)
Project:	WELD COUNTY, COLORADO	MD Reference:	KB @ 4566.0ft (Original Well Elev)
Site:	Anschutz State 4-62-2 Pad	North Reference:	True
Well:	Anschutz State 4-62-2-1721BH2	Survey Calculation Method:	Minimum Curvature
Wellbore:	Wellbore #1		
Design:	Design #1		

Planned Survey									
Measured Depth (ft)	Inclination (°)	Azimuth (°)	Vertical Depth (ft)	+N/-S (ft)	+E/-W (ft)	Vertical Section (ft)	Dogleg Rate (°/100ft)	Build Rate (°/100ft)	Turn Rate (°/100ft)
5,100.0	3.16	258.83	5,093.9	-42.9	-217.5	-218.0	0.00	0.00	0.00
5,200.0	3.16	258.83	5,193.8	-44.0	-222.9	-223.5	0.00	0.00	0.00
5,211.8	3.16	258.83	5,205.6	-44.1	-223.5	-224.1	0.00	0.00	0.00
5,300.0	1.40	258.83	5,293.7	-44.8	-227.0	-227.6	2.00	-2.00	0.00
5,369.9	0.00	88.96	5,363.5	-45.0	-227.8	-228.4	2.00	-2.00	0.00
5,400.0	0.00	88.96	5,393.7	-45.0	-227.8	-228.4	0.00	0.00	0.00
5,500.0	0.00	88.96	5,493.7	-45.0	-227.8	-228.4	0.00	0.00	0.00
5,600.0	0.00	88.96	5,593.7	-45.0	-227.8	-228.4	0.00	0.00	0.00
5,619.9	0.00	88.96	5,613.5	-45.0	-227.8	-228.4	0.00	0.00	0.00
5,700.0	9.62	88.96	5,693.3	-44.8	-221.1	-221.7	12.00	12.00	0.00
5,800.0	21.62	88.96	5,789.4	-44.4	-194.2	-194.8	12.00	12.00	0.00
5,880.8	31.31	88.96	5,861.7	-43.7	-158.3	-158.8	12.00	12.00	0.00
SHARON SPRINGS									
5,900.0	33.62	88.96	5,877.9	-43.5	-148.0	-148.5	12.00	12.00	0.00
6,000.0	45.62	88.96	5,954.8	-42.4	-84.3	-84.9	12.00	12.00	0.00
6,009.5	46.76	88.96	5,961.3	-42.3	-77.5	-78.0	12.00	12.00	0.00
NIOBRARA									
6,100.0	57.62	88.96	6,016.7	-41.0	-6.1	-6.7	12.00	12.00	0.00
6,200.0	69.62	88.96	6,061.1	-39.3	83.3	82.8	12.00	12.00	0.00
6,226.1	72.75	88.96	6,069.5	-38.9	108.0	107.5	12.00	12.00	0.00
TOP B2 TARGET									
6,300.0	81.62	88.96	6,085.9	-37.6	180.0	179.5	12.00	12.00	0.00
6,372.0	90.25	88.96	6,091.0	-36.3	251.7	251.2	12.00	12.00	0.00
AS 2-1721BH2 LP									
6,375.0	90.25	88.96	6,091.0	-36.2	254.7	254.2	0.00	0.00	0.00
7" Csg									
6,400.0	90.25	88.96	6,090.9	-35.8	279.7	279.2	0.00	0.00	0.00
6,500.0	90.25	88.96	6,090.4	-34.0	379.7	379.2	0.00	0.00	0.00
6,600.0	90.25	88.96	6,090.0	-32.2	479.7	479.2	0.00	0.00	0.00
6,700.0	90.25	88.96	6,089.6	-30.4	579.6	579.2	0.00	0.00	0.00
6,800.0	90.25	88.96	6,089.1	-28.6	679.6	679.2	0.00	0.00	0.00
6,900.0	90.25	88.96	6,088.7	-26.8	779.6	779.2	0.00	0.00	0.00
7,000.0	90.25	88.96	6,088.2	-24.9	879.6	879.2	0.00	0.00	0.00
7,100.0	90.25	88.96	6,087.8	-23.1	979.6	979.2	0.00	0.00	0.00
7,200.0	90.25	88.96	6,087.4	-21.3	1,079.6	1,079.2	0.00	0.00	0.00
7,300.0	90.25	88.96	6,086.9	-19.5	1,179.5	1,179.2	0.00	0.00	0.00
7,400.0	90.25	88.96	6,086.5	-17.7	1,279.5	1,279.2	0.00	0.00	0.00
7,500.0	90.25	88.96	6,086.0	-15.9	1,379.5	1,379.2	0.00	0.00	0.00
7,600.0	90.25	88.96	6,085.6	-14.1	1,479.5	1,479.2	0.00	0.00	0.00
7,700.0	90.25	88.96	6,085.2	-12.3	1,579.5	1,579.2	0.00	0.00	0.00
7,800.0	90.25	88.96	6,084.7	-10.5	1,679.5	1,679.2	0.00	0.00	0.00
7,900.0	90.25	88.96	6,084.3	-8.7	1,779.4	1,779.2	0.00	0.00	0.00
8,000.0	90.25	88.96	6,083.8	-6.9	1,879.4	1,879.2	0.00	0.00	0.00
8,100.0	90.25	88.96	6,083.4	-5.1	1,979.4	1,979.2	0.00	0.00	0.00
8,200.0	90.25	88.96	6,083.0	-3.2	2,079.4	2,079.2	0.00	0.00	0.00
8,300.0	90.25	88.96	6,082.5	-1.4	2,179.4	2,179.2	0.00	0.00	0.00
8,400.0	90.25	88.96	6,082.1	0.4	2,279.4	2,279.2	0.00	0.00	0.00
8,500.0	90.25	88.96	6,081.6	2.2	2,379.3	2,379.2	0.00	0.00	0.00
8,600.0	90.25	88.96	6,081.2	4.0	2,479.3	2,479.2	0.00	0.00	0.00
8,700.0	90.25	88.96	6,080.8	5.8	2,579.3	2,579.2	0.00	0.00	0.00
8,800.0	90.25	88.96	6,080.3	7.6	2,679.3	2,679.2	0.00	0.00	0.00
8,900.0	90.25	88.96	6,079.9	9.4	2,779.3	2,779.1	0.00	0.00	0.00
9,000.0	90.25	88.96	6,079.4	11.2	2,879.2	2,879.1	0.00	0.00	0.00

Bill Barrett Corp

Planning Report

Database:	Compass	Local Co-ordinate Reference:	Well Anschutz State 4-62-2-1721BH2
Company:	BILL BARRETT CORP	TVD Reference:	KB @ 4566.0ft (Original Well Elev)
Project:	WELD COUNTY, COLORADO	MD Reference:	KB @ 4566.0ft (Original Well Elev)
Site:	Anschutz State 4-62-2 Pad	North Reference:	True
Well:	Anschutz State 4-62-2-1721BH2	Survey Calculation Method:	Minimum Curvature
Wellbore:	Wellbore #1		
Design:	Design #1		

Planned Survey									
Measured Depth (ft)	Inclination (°)	Azimuth (°)	Vertical Depth (ft)	+N/-S (ft)	+E/-W (ft)	Vertical Section (ft)	Dogleg Rate (°/100ft)	Build Rate (°/100ft)	Turn Rate (°/100ft)
9,100.0	90.25	88.96	6,079.0	13.0	2,979.2	2,979.1	0.00	0.00	0.00
9,200.0	90.25	88.96	6,078.6	14.8	3,079.2	3,079.1	0.00	0.00	0.00
9,300.0	90.25	88.96	6,078.1	16.6	3,179.2	3,179.1	0.00	0.00	0.00
9,400.0	90.25	88.96	6,077.7	18.5	3,279.2	3,279.1	0.00	0.00	0.00
9,500.0	90.25	88.96	6,077.2	20.3	3,379.2	3,379.1	0.00	0.00	0.00
9,600.0	90.25	88.96	6,076.8	22.1	3,479.1	3,479.1	0.00	0.00	0.00
9,700.0	90.25	88.96	6,076.4	23.9	3,579.1	3,579.1	0.00	0.00	0.00
9,800.0	90.25	88.96	6,075.9	25.7	3,679.1	3,679.1	0.00	0.00	0.00
9,900.0	90.25	88.96	6,075.5	27.5	3,779.1	3,779.1	0.00	0.00	0.00
10,000.0	90.25	88.96	6,075.0	29.3	3,879.1	3,879.1	0.00	0.00	0.00
10,100.0	90.25	88.96	6,074.6	31.1	3,979.1	3,979.1	0.00	0.00	0.00
10,200.0	90.25	88.96	6,074.2	32.9	4,079.0	4,079.1	0.00	0.00	0.00
10,300.0	90.25	88.96	6,073.7	34.7	4,179.0	4,179.1	0.00	0.00	0.00
10,400.0	90.25	88.96	6,073.3	36.5	4,279.0	4,279.1	0.00	0.00	0.00
10,500.0	90.25	88.96	6,072.8	38.3	4,379.0	4,379.1	0.00	0.00	0.00
10,600.0	90.25	88.96	6,072.4	40.2	4,479.0	4,479.1	0.00	0.00	0.00
10,700.0	90.25	88.96	6,072.0	42.0	4,579.0	4,579.1	0.00	0.00	0.00
10,800.0	90.25	88.96	6,071.5	43.8	4,678.9	4,679.1	0.00	0.00	0.00
10,900.0	90.25	88.96	6,071.1	45.6	4,778.9	4,779.1	0.00	0.00	0.00
11,000.0	90.25	88.96	6,070.6	47.4	4,878.9	4,879.1	0.00	0.00	0.00
11,100.0	90.25	88.96	6,070.2	49.2	4,978.9	4,979.1	0.00	0.00	0.00
11,200.0	90.25	88.96	6,069.8	51.0	5,078.9	5,079.1	0.00	0.00	0.00
11,300.0	90.25	88.96	6,069.3	52.8	5,178.8	5,179.1	0.00	0.00	0.00
11,400.0	90.25	88.96	6,068.9	54.6	5,278.8	5,279.1	0.00	0.00	0.00
11,500.0	90.25	88.96	6,068.4	56.4	5,378.8	5,379.1	0.00	0.00	0.00
11,600.0	90.25	88.96	6,068.0	58.2	5,478.8	5,479.1	0.00	0.00	0.00
11,700.0	90.25	88.96	6,067.6	60.0	5,578.8	5,579.1	0.00	0.00	0.00
11,800.0	90.25	88.96	6,067.1	61.9	5,678.8	5,679.1	0.00	0.00	0.00
11,900.0	90.25	88.96	6,066.7	63.7	5,778.7	5,779.1	0.00	0.00	0.00
12,000.0	90.25	88.96	6,066.2	65.5	5,878.7	5,879.1	0.00	0.00	0.00
12,100.0	90.25	88.96	6,065.8	67.3	5,978.7	5,979.1	0.00	0.00	0.00
12,200.0	90.25	88.96	6,065.3	69.1	6,078.7	6,079.1	0.00	0.00	0.00
12,300.0	90.25	88.96	6,064.9	70.9	6,178.7	6,179.1	0.00	0.00	0.00
12,400.0	90.25	88.96	6,064.5	72.7	6,278.7	6,279.1	0.00	0.00	0.00
12,500.0	90.25	88.96	6,064.0	74.5	6,378.6	6,379.1	0.00	0.00	0.00
12,600.0	90.25	88.96	6,063.6	76.3	6,478.6	6,479.1	0.00	0.00	0.00
12,700.0	90.25	88.96	6,063.1	78.1	6,578.6	6,579.1	0.00	0.00	0.00
12,800.0	90.25	88.96	6,062.7	79.9	6,678.6	6,679.1	0.00	0.00	0.00
12,900.0	90.25	88.96	6,062.3	81.7	6,778.6	6,779.1	0.00	0.00	0.00
13,000.0	90.25	88.96	6,061.8	83.6	6,878.6	6,879.1	0.00	0.00	0.00
13,100.0	90.25	88.96	6,061.4	85.4	6,978.5	6,979.1	0.00	0.00	0.00
13,200.0	90.25	88.96	6,060.9	87.2	7,078.5	7,079.1	0.00	0.00	0.00
13,300.0	90.25	88.96	6,060.5	89.0	7,178.5	7,179.1	0.00	0.00	0.00
13,400.0	90.25	88.96	6,060.1	90.8	7,278.5	7,279.0	0.00	0.00	0.00
13,500.0	90.25	88.96	6,059.6	92.6	7,378.5	7,379.0	0.00	0.00	0.00
13,600.0	90.25	88.96	6,059.2	94.4	7,478.5	7,479.0	0.00	0.00	0.00
13,700.0	90.25	88.96	6,058.7	96.2	7,578.4	7,579.0	0.00	0.00	0.00
13,800.0	90.25	88.96	6,058.3	98.0	7,678.4	7,679.0	0.00	0.00	0.00
13,900.0	90.25	88.96	6,057.9	99.8	7,778.4	7,779.0	0.00	0.00	0.00
14,000.0	90.25	88.96	6,057.4	101.6	7,878.4	7,879.0	0.00	0.00	0.00
14,100.0	90.25	88.96	6,057.0	103.4	7,978.4	7,979.0	0.00	0.00	0.00
14,200.0	90.25	88.96	6,056.5	105.3	8,078.3	8,079.0	0.00	0.00	0.00
14,300.0	90.25	88.96	6,056.1	107.1	8,178.3	8,179.0	0.00	0.00	0.00
14,324.3	90.25	88.96	6,056.0	107.5	8,202.6	8,203.3	0.00	0.00	0.00

Bill Barrett Corp

Planning Report

Database:	Compass	Local Co-ordinate Reference:	Well Anschutz State 4-62-2-1721BH2
Company:	BILL BARRETT CORP	TVD Reference:	KB @ 4566.0ft (Original Well Elev)
Project:	WELD COUNTY, COLORADO	MD Reference:	KB @ 4566.0ft (Original Well Elev)
Site:	Anschutz State 4-62-2 Pad	North Reference:	True
Well:	Anschutz State 4-62-2-1721BH2	Survey Calculation Method:	Minimum Curvature
Wellbore:	Wellbore #1		
Design:	Design #1		

Planned Survey									
Measured Depth (ft)	Inclination (°)	Azimuth (°)	Vertical Depth (ft)	+N/-S (ft)	+E/-W (ft)	Vertical Section (ft)	Dogleg Rate (°/100ft)	Build Rate (°/100ft)	Turn Rate (°/100ft)
AS 2-1721BH2 PBHL									

Casing Points					
Measured Depth (ft)	Vertical Depth (ft)	Name	Casing Diameter (")	Hole Diameter (")	
6,375.0	6,091.0	7" Csg	7	8-3/4	

Formations						
Measured Depth (ft)	Vertical Depth (ft)	Name	Lithology	Dip (°)	Dip Direction (°)	
	0.0	FOX HILLS BASE		-0.25	88.96	
4,993.8	4,987.0	SHANNON		-0.25	88.96	
5,880.8	5,861.0	SHARON SPRINGS		-0.25	88.96	
6,009.5	5,961.0	NIOBRARA		-0.25	88.96	
6,226.1	6,070.0	TOP B2 TARGET		-0.25	88.96	
	6,115.0	BASE B2 TARGET		-0.25	88.96	