

T10N, R57W, 6th P.M.

WHITING OIL & GAS CORP.

1917 GLO Brass
Cap, 0.5' High,
Lat: 40.846303°
Long: 103.765944°

1917 GLO Brass
Cap, 0.9' High,
Lat: 40.846347°
Long: 103.756331°

1917 GLO Brass Cap,
Flush w/Ground,
Lat: 40.846392°
Long: 103.746725°

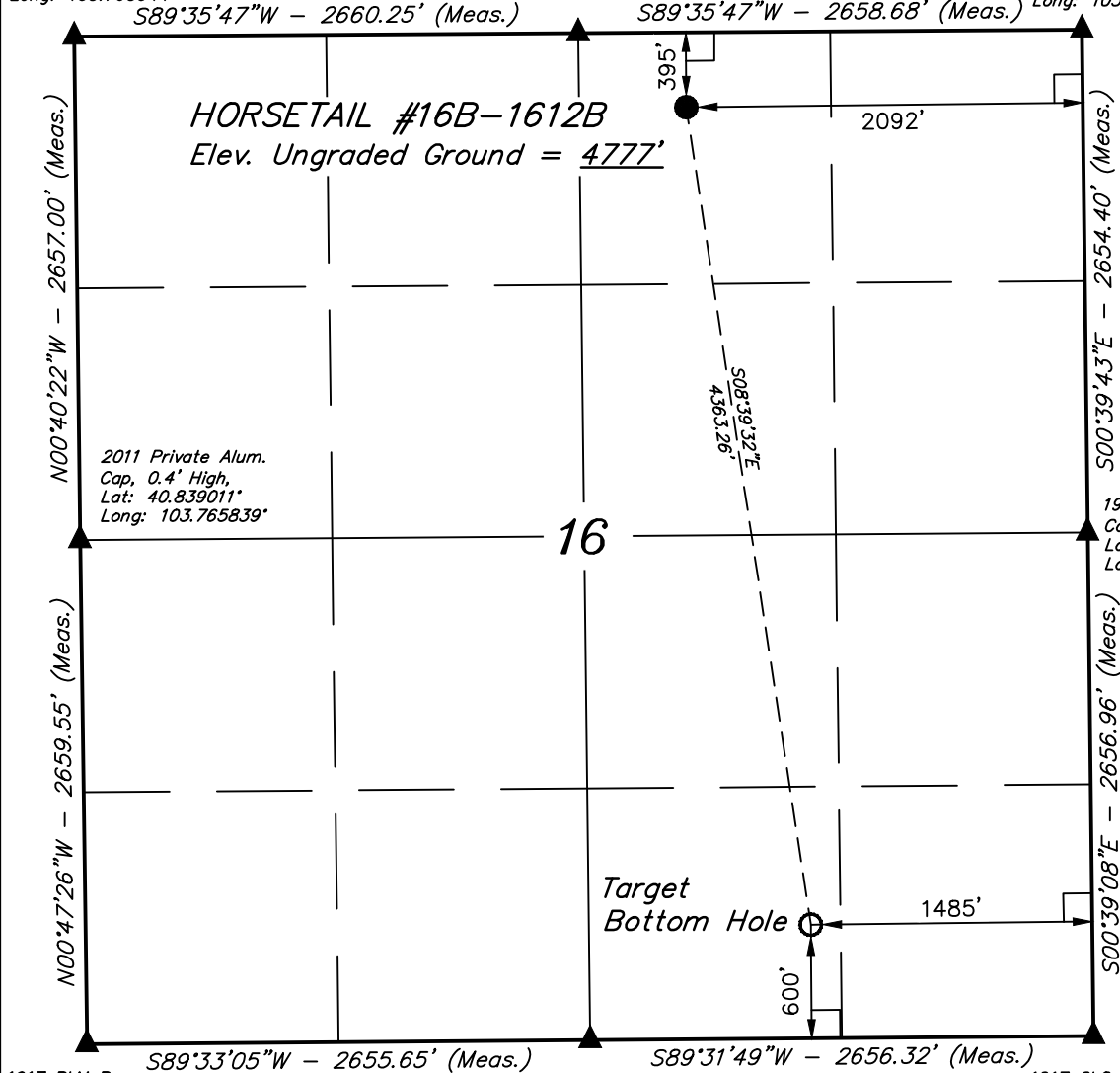
Well location, HORSETAIL #16B-1612B, located as shown in the NW 1/4 NE 1/4 of Section 16, T10N, R57W, 6th P.M., Weld County, Colorado.

BASIS OF ELEVATION

SPOT ELEVATION LOCATED AT THE NORTHEAST CORNER OF SECTION 15, T9N, R58W, 6th P.M. TAKEN FROM THE GATEHOOK SPRING, QUADRANGLE, COLORADO, WELD COUNTY, 7.5 MINUTE QUAD (TOPOGRAPHIC MAP) PUBLISHED BY THE UNITED STATES DEPARTMENT OF THE INTERIOR, GEOLOGICAL SURVEY. SAID ELEVATION IS MARKED AS BEING 4679 FEET.

BASIS OF BEARINGS

BASIS OF BEARINGS IS A G.P.S. OBSERVATION.



1917 BLM Brass
Cap, 0.6' High,
Lat: 40.831714°
Long: 103.765714°

1917 GLO Brass Cap,
Flush w/Ground,
Lat: 40.831764°
Long: 103.756119°

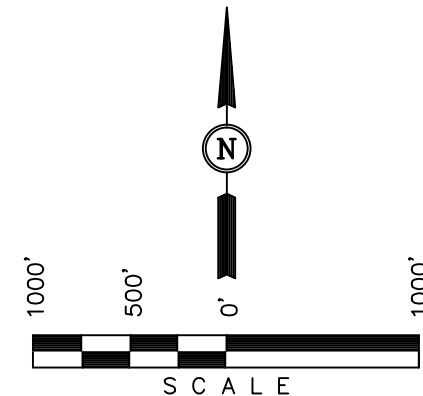
1917 GLO Brass Cap,
Flush w/Ground,
Lat: 40.831817°
Long: 103.746525°

LEGEND:

- └─┘ = 90° SYMBOL
- = PROPOSED WELL HEAD.
- ▲ = SECTION CORNERS LOCATED.

PDOP = 1.5

NAD 83 (TARGET BOTTOM HOLE)	NAD 83 (SURFACE LOCATION)
LATITUDE = 40°50'00.36" (40.833433)	LATITUDE = 40°50'42.98" (40.845272)
LONGITUDE = 103°45'06.88" (103.751911)	LONGITUDE = 103°45'15.37" (103.754269)
NAD 27 TARGET BOTTOM HOLE	NAD 27 (SURFACE LOCATION)
LATITUDE = 40°50'00.41" (40.833447)	LATITUDE = 40°50'43.03" (40.845286)
LONGITUDE = 103°45'05.08" (103.751411)	LONGITUDE = 103°45'13.57" (103.753769)



CERTIFICATE

THIS IS TO CERTIFY THAT THE ABOVE PLAT WAS PREPARED FROM FIELD NOTES OF ACTUAL SURVEYS MADE BY ME OR UNDER MY SUPERVISION AND THAT THE SAME ARE TRUE AND CORRECT TO THE BEST OF MY KNOWLEDGE AND BELIEF.

REGISTERED LAND SURVEYOR
REGISTRATION NO. 17492
STATE OF COLORADO
04-08-13

UINTAH ENGINEERING & LAND SURVEYING
85 SOUTH 200 EAST - VERNAL, UTAH 84078
(435) 789-1017

SCALE 1" = 1000'	DATE SURVEYED: 04-01-13	DATE DRAWN: 04-02-13
PARTY D.N. G.W. J.W.	REFERENCES G.L.O. PLAT	
WEATHER COOL	FILE WHITING OIL & GAS CORP.	