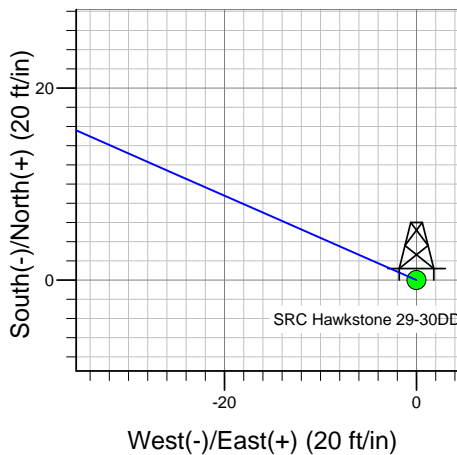
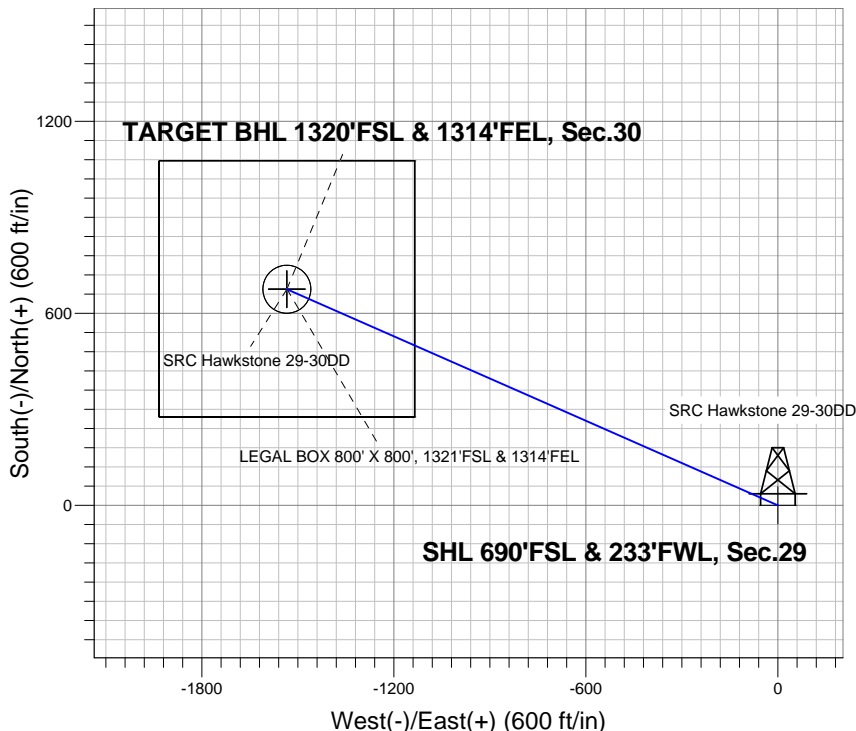
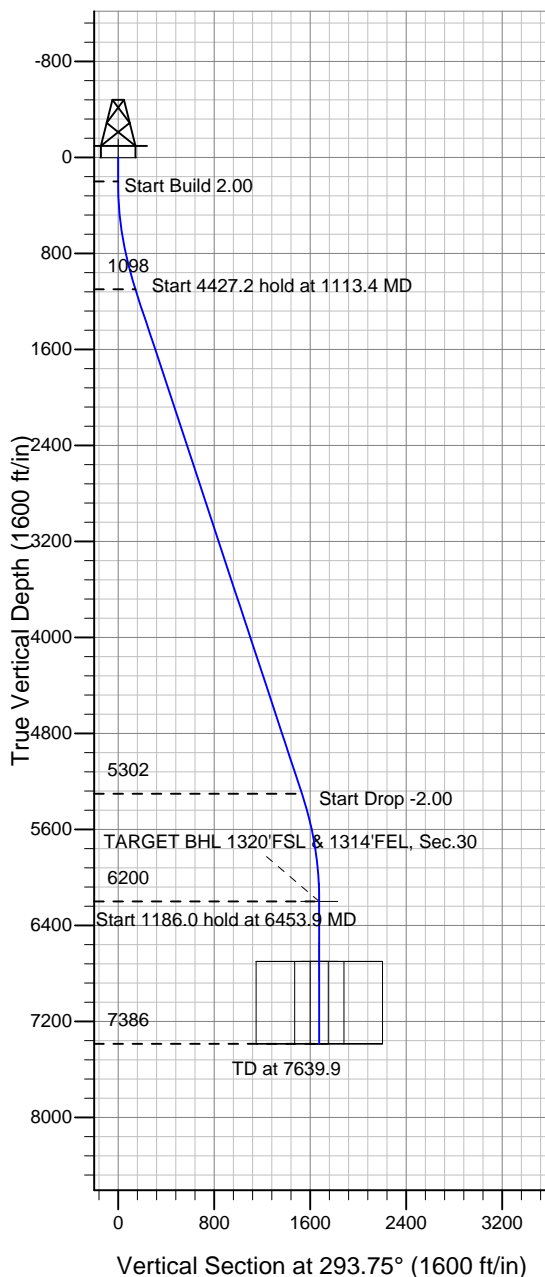


Synergy Resources



SRC Hawkstone 29-30DD
 Plan #1 (12-30-13)
 12:51, December 30 2013



Azimuths to True North
 Magnetic North: 8.50°

Magnetic Field
 Strength: 52943.6nT
 Dip Angle: 67.09°
 Date: 12/30/2013
 Model: IGRF2010

WELLBORE TARGET DETAILS (LAT/LONG)

Name	TVD	+N/-S	+E/-W	Latitude	Longitude	Shape
SHL 690'FSL & 233'FWL, Sec.29	1.0	0.0	0.0	40.540633	-104.695816	Point
TARGET BHL 1320'FSL & 1314'FEL, Sec.30	6200.0	675.1	-1534.5	40.542486	-104.701337	Point
LEGAL BOX 800' X 800', 1321'FSL & 1314'FEL	6700.0	676.1	-1534.5	40.542489	-104.701337	Rectangle (Sides: L800.0 W800.0)
TARGET CIRCLE 1320'FSL & 1314'FEL	6700.0	675.1	-1534.5	40.542486	-104.701337	Circle (Radius: 75.0)

SECTION DETAILS

Sec	MD	Inc	Azi	TVD	+N/-S	+E/-W	DLeg	TFace	VSec	Target
1	0.0	0.00	0.00	0.0	0.0	0.0	0.00	0.00	0.0	
2	200.0	0.00	0.00	200.0	0.0	0.0	0.00	0.00	0.0	
3	1113.4	18.27	293.75	1098.0	58.1	-132.1	2.00	293.75	144.4	
4	5540.5	18.27	293.75	5302.0	617.0	-1402.3	0.00	0.00	1532.1	
5	6453.9	0.00	0.00	6200.0	675.1	-1534.5	2.00	180.00	1676.4	TARGET BHL 1320'FSL & 1314'FEL, Sec.30
6	7639.9	0.00	0.00	7386.0	675.1	-1534.5	0.00	0.00	1676.4	



Synergy Resources

SEC.29-T7N-R65W

SRC Hawkstone 29-30DD Pad Sec.29-T7N-R65W

SRC Hawkstone 29-30DD

Wellbore #1

Plan: Plan #1 (12-30-13)

Standard Planning Report

30 December, 2013

Database:	Landmark	Local Co-ordinate Reference:	Well SRC Hawkstone 29-30DD
Company:	Synergy Resources	TVD Reference:	WELL @ 4896.0ft (RKB - 13')
Project:	SEC.29-T7N-R65W	MD Reference:	WELL @ 4896.0ft (RKB - 13')
Site:	SRC Hawkstone 29-30DD Pad Sec.29-T7N-R65W	North Reference:	True
Well:	SRC Hawkstone 29-30DD	Survey Calculation Method:	Minimum Curvature
Wellbore:	Wellbore #1		
Design:	Plan #1 (12-30-13)		

Project	SEC.29-T7N-R65W, Weld County, CO		
Map System:	US State Plane 1983	System Datum:	Mean Sea Level
Geo Datum:	North American Datum 1983		Using Well Reference Point
Map Zone:	Colorado Northern Zone		Using geodetic scale factor

Site	SRC Hawkstone 29-30DD Pad Sec.29-T7N-R65W		
Site Position:		Northing:	1,440,806.88 ft
From:	Lat/Long	Easting:	3,223,505.88 ft
Position Uncertainty:	0.0 ft	Slot Radius:	"
		Latitude:	40.540633
		Longitude:	-104.695816
		Grid Convergence:	0.52 °

Well	SRC Hawkstone 29-30DD		
Well Position	+N/-S	0.0 ft	Northing:
	+E/-W	0.0 ft	Easting:
Position Uncertainty		0.0 ft	Wellhead Elevation:
			Latitude:
			Longitude:
			Ground Level:

Wellbore	Wellbore #1				
Magnetics	Model Name	Sample Date	Declination (°)	Dip Angle (°)	Field Strength (nT)
	IGRF2010	12/30/2013	8.50	67.09	52,944

Design	Plan #1 (12-30-13)			
Audit Notes:				
Version:	Phase:	PROTOTYPE	Tie On Depth:	0.0
Vertical Section:	Depth From (TVD) (ft)	+N/-S (ft)	+E/-W (ft)	Direction (°)
	0.0	0.0	0.0	293.75

Plan Sections										
Measured Depth (ft)	Inclination (°)	Azimuth (°)	Vertical Depth (ft)	+N/-S (ft)	+E/-W (ft)	Dogleg Rate (°/100ft)	Build Rate (°/100ft)	Turn Rate (°/100ft)	TFO (°)	Target
0.0	0.00	0.00	0.0	0.0	0.0	0.00	0.00	0.00	0.00	
200.0	0.00	0.00	200.0	0.0	0.0	0.00	0.00	0.00	0.00	
1,113.4	18.27	293.75	1,098.0	58.1	-132.1	2.00	2.00	0.00	293.75	
5,540.5	18.27	293.75	5,302.0	617.0	-1,402.3	0.00	0.00	0.00	0.00	
6,453.9	0.00	0.00	6,200.0	675.1	-1,534.5	2.00	-2.00	0.00	180.00	TARGET BHL 132C
7,639.9	0.00	0.00	7,386.0	675.1	-1,534.5	0.00	0.00	0.00	0.00	

Database:	Landmark	Local Co-ordinate Reference:	Well SRC Hawkstone 29-30DD
Company:	Synergy Resources	TVD Reference:	WELL @ 4896.0ft (RKB - 13')
Project:	SEC.29-T7N-R65W	MD Reference:	WELL @ 4896.0ft (RKB - 13')
Site:	SRC Hawkstone 29-30DD Pad Sec.29-T7N-R65W	North Reference:	True
Well:	SRC Hawkstone 29-30DD	Survey Calculation Method:	Minimum Curvature
Wellbore:	Wellbore #1		
Design:	Plan #1 (12-30-13)		

Planned Survey									
Measured Depth (ft)	Inclination (°)	Azimuth (°)	Vertical Depth (ft)	+N/-S (ft)	+E/-W (ft)	Vertical Section (ft)	Dogleg Rate (°/100ft)	Build Rate (°/100ft)	Turn Rate (°/100ft)
0.0	0.00	0.00	0.0	0.0	0.0	0.0	0.00	0.00	0.00
40.0	0.00	0.00	40.0	0.0	0.0	0.0	0.00	0.00	0.00
80.0	0.00	0.00	80.0	0.0	0.0	0.0	0.00	0.00	0.00
120.0	0.00	0.00	120.0	0.0	0.0	0.0	0.00	0.00	0.00
160.0	0.00	0.00	160.0	0.0	0.0	0.0	0.00	0.00	0.00
200.0	0.00	0.00	200.0	0.0	0.0	0.0	0.00	0.00	0.00
240.0	0.80	293.75	240.0	0.1	-0.3	0.3	2.00	2.00	0.00
280.0	1.60	293.75	280.0	0.4	-1.0	1.1	2.00	2.00	0.00
320.0	2.40	293.75	320.0	1.0	-2.3	2.5	2.00	2.00	0.00
360.0	3.20	293.75	359.9	1.8	-4.1	4.5	2.00	2.00	0.00
400.0	4.00	293.75	399.8	2.8	-6.4	7.0	2.00	2.00	0.00
440.0	4.80	293.75	439.7	4.0	-9.2	10.0	2.00	2.00	0.00
480.0	5.60	293.75	479.6	5.5	-12.5	13.7	2.00	2.00	0.00
520.0	6.40	293.75	519.3	7.2	-16.3	17.9	2.00	2.00	0.00
560.0	7.20	293.75	559.1	9.1	-20.7	22.6	2.00	2.00	0.00
600.0	8.00	293.75	598.7	11.2	-25.5	27.9	2.00	2.00	0.00
640.0	8.80	293.75	638.3	13.6	-30.9	33.7	2.00	2.00	0.00
680.0	9.60	293.75	677.8	16.2	-36.7	40.1	2.00	2.00	0.00
720.0	10.40	293.75	717.1	19.0	-43.1	47.1	2.00	2.00	0.00
760.0	11.20	293.75	756.4	22.0	-49.9	54.6	2.00	2.00	0.00
800.0	12.00	293.75	795.6	25.2	-57.3	62.6	2.00	2.00	0.00
840.0	12.80	293.75	834.7	28.7	-65.2	71.2	2.00	2.00	0.00
880.0	13.60	293.75	873.6	32.3	-73.5	80.3	2.00	2.00	0.00
920.0	14.40	293.75	912.4	36.2	-82.4	90.0	2.00	2.00	0.00
960.0	15.20	293.75	951.1	40.4	-91.7	100.2	2.00	2.00	0.00
1,000.0	16.00	293.75	989.6	44.7	-101.6	111.0	2.00	2.00	0.00
1,040.0	16.80	293.75	1,028.0	49.2	-111.9	122.3	2.00	2.00	0.00
1,080.0	17.60	293.75	1,066.2	54.0	-122.7	134.1	2.00	2.00	0.00
1,113.4	18.27	293.75	1,098.0	58.1	-132.1	144.4	2.00	2.00	0.00
1,120.0	18.27	293.75	1,104.3	59.0	-134.1	146.5	0.00	0.00	0.00
1,160.0	18.27	293.75	1,142.3	64.0	-145.5	159.0	0.00	0.00	0.00
1,200.0	18.27	293.75	1,180.2	69.1	-157.0	171.5	0.00	0.00	0.00
1,240.0	18.27	293.75	1,218.2	74.1	-168.5	184.1	0.00	0.00	0.00
1,280.0	18.27	293.75	1,256.2	79.2	-180.0	196.6	0.00	0.00	0.00
1,320.0	18.27	293.75	1,294.2	84.2	-191.4	209.1	0.00	0.00	0.00
1,360.0	18.27	293.75	1,332.2	89.3	-202.9	221.7	0.00	0.00	0.00
1,400.0	18.27	293.75	1,370.2	94.3	-214.4	234.2	0.00	0.00	0.00
1,440.0	18.27	293.75	1,408.1	99.4	-225.9	246.8	0.00	0.00	0.00
1,480.0	18.27	293.75	1,446.1	104.4	-237.3	259.3	0.00	0.00	0.00
1,520.0	18.27	293.75	1,484.1	109.5	-248.8	271.8	0.00	0.00	0.00
1,560.0	18.27	293.75	1,522.1	114.5	-260.3	284.4	0.00	0.00	0.00
1,600.0	18.27	293.75	1,560.1	119.6	-271.8	296.9	0.00	0.00	0.00
1,640.0	18.27	293.75	1,598.1	124.6	-283.2	309.4	0.00	0.00	0.00
1,680.0	18.27	293.75	1,636.0	129.7	-294.7	322.0	0.00	0.00	0.00
1,720.0	18.27	293.75	1,674.0	134.7	-306.2	334.5	0.00	0.00	0.00
1,760.0	18.27	293.75	1,712.0	139.8	-317.7	347.1	0.00	0.00	0.00
1,800.0	18.27	293.75	1,750.0	144.8	-329.1	359.6	0.00	0.00	0.00
1,840.0	18.27	293.75	1,788.0	149.9	-340.6	372.1	0.00	0.00	0.00
1,880.0	18.27	293.75	1,826.0	154.9	-352.1	384.7	0.00	0.00	0.00
1,920.0	18.27	293.75	1,864.0	160.0	-363.6	397.2	0.00	0.00	0.00
1,960.0	18.27	293.75	1,901.9	165.0	-375.1	409.7	0.00	0.00	0.00
2,000.0	18.27	293.75	1,939.9	170.1	-386.5	422.3	0.00	0.00	0.00
2,040.0	18.27	293.75	1,977.9	175.1	-398.0	434.8	0.00	0.00	0.00

Database:	Landmark	Local Co-ordinate Reference:	Well SRC Hawkstone 29-30DD
Company:	Synergy Resources	TVD Reference:	WELL @ 4896.0ft (RKB - 13')
Project:	SEC.29-T7N-R65W	MD Reference:	WELL @ 4896.0ft (RKB - 13')
Site:	SRC Hawkstone 29-30DD Pad	North Reference:	True
	Sec.29-T7N-R65W		
Well:	SRC Hawkstone 29-30DD	Survey Calculation Method:	Minimum Curvature
Wellbore:	Wellbore #1		
Design:	Plan #1 (12-30-13)		

Planned Survey										
Measured Depth (ft)	Inclination (°)	Azimuth (°)	Vertical Depth (ft)	+N/-S (ft)	+E/-W (ft)	Vertical Section (ft)	Dogleg Rate (°/100ft)	Build Rate (°/100ft)	Turn Rate (°/100ft)	
2,080.0	18.27	293.75	2,015.9	180.2	-409.5	447.4	0.00	0.00	0.00	
2,120.0	18.27	293.75	2,053.9	185.2	-421.0	459.9	0.00	0.00	0.00	
2,160.0	18.27	293.75	2,091.9	190.3	-432.4	472.4	0.00	0.00	0.00	
2,200.0	18.27	293.75	2,129.8	195.3	-443.9	485.0	0.00	0.00	0.00	
2,240.0	18.27	293.75	2,167.8	200.4	-455.4	497.5	0.00	0.00	0.00	
2,280.0	18.27	293.75	2,205.8	205.4	-466.9	510.1	0.00	0.00	0.00	
2,320.0	18.27	293.75	2,243.8	210.5	-478.3	522.6	0.00	0.00	0.00	
2,360.0	18.27	293.75	2,281.8	215.5	-489.8	535.1	0.00	0.00	0.00	
2,400.0	18.27	293.75	2,319.8	220.6	-501.3	547.7	0.00	0.00	0.00	
2,440.0	18.27	293.75	2,357.7	225.6	-512.8	560.2	0.00	0.00	0.00	
2,480.0	18.27	293.75	2,395.7	230.7	-524.2	572.7	0.00	0.00	0.00	
2,520.0	18.27	293.75	2,433.7	235.7	-535.7	585.3	0.00	0.00	0.00	
2,560.0	18.27	293.75	2,471.7	240.8	-547.2	597.8	0.00	0.00	0.00	
2,600.0	18.27	293.75	2,509.7	245.8	-558.7	610.4	0.00	0.00	0.00	
2,640.0	18.27	293.75	2,547.7	250.9	-570.1	622.9	0.00	0.00	0.00	
2,680.0	18.27	293.75	2,585.7	255.9	-581.6	635.4	0.00	0.00	0.00	
2,720.0	18.27	293.75	2,623.6	261.0	-593.1	648.0	0.00	0.00	0.00	
2,760.0	18.27	293.75	2,661.6	266.0	-604.6	660.5	0.00	0.00	0.00	
2,800.0	18.27	293.75	2,699.6	271.1	-616.1	673.0	0.00	0.00	0.00	
2,840.0	18.27	293.75	2,737.6	276.1	-627.5	685.6	0.00	0.00	0.00	
2,880.0	18.27	293.75	2,775.6	281.2	-639.0	698.1	0.00	0.00	0.00	
2,920.0	18.27	293.75	2,813.6	286.2	-650.5	710.7	0.00	0.00	0.00	
2,960.0	18.27	293.75	2,851.5	291.3	-662.0	723.2	0.00	0.00	0.00	
3,000.0	18.27	293.75	2,889.5	296.3	-673.4	735.7	0.00	0.00	0.00	
3,040.0	18.27	293.75	2,927.5	301.4	-684.9	748.3	0.00	0.00	0.00	
3,080.0	18.27	293.75	2,965.5	306.4	-696.4	760.8	0.00	0.00	0.00	
3,120.0	18.27	293.75	3,003.5	311.4	-707.9	773.3	0.00	0.00	0.00	
3,160.0	18.27	293.75	3,041.5	316.5	-719.3	785.9	0.00	0.00	0.00	
3,200.0	18.27	293.75	3,079.4	321.5	-730.8	798.4	0.00	0.00	0.00	
3,240.0	18.27	293.75	3,117.4	326.6	-742.3	811.0	0.00	0.00	0.00	
3,280.0	18.27	293.75	3,155.4	331.6	-753.8	823.5	0.00	0.00	0.00	
3,320.0	18.27	293.75	3,193.4	336.7	-765.2	836.0	0.00	0.00	0.00	
3,360.0	18.27	293.75	3,231.4	341.7	-776.7	848.6	0.00	0.00	0.00	
3,400.0	18.27	293.75	3,269.4	346.8	-788.2	861.1	0.00	0.00	0.00	
3,440.0	18.27	293.75	3,307.4	351.8	-799.7	873.7	0.00	0.00	0.00	
3,480.0	18.27	293.75	3,345.3	356.9	-811.1	886.2	0.00	0.00	0.00	
3,520.0	18.27	293.75	3,383.3	361.9	-822.6	898.7	0.00	0.00	0.00	
3,560.0	18.27	293.75	3,421.3	367.0	-834.1	911.3	0.00	0.00	0.00	
3,600.0	18.27	293.75	3,459.3	372.0	-845.6	923.8	0.00	0.00	0.00	
3,640.0	18.27	293.75	3,497.3	377.1	-857.1	936.3	0.00	0.00	0.00	
3,680.0	18.27	293.75	3,535.3	382.1	-868.5	948.9	0.00	0.00	0.00	
3,720.0	18.27	293.75	3,573.2	387.2	-880.0	961.4	0.00	0.00	0.00	
3,760.0	18.27	293.75	3,611.2	392.2	-891.5	974.0	0.00	0.00	0.00	
3,800.0	18.27	293.75	3,649.2	397.3	-903.0	986.5	0.00	0.00	0.00	
3,840.0	18.27	293.75	3,687.2	402.3	-914.4	999.0	0.00	0.00	0.00	
3,880.0	18.27	293.75	3,725.2	407.4	-925.9	1,011.6	0.00	0.00	0.00	
3,920.0	18.27	293.75	3,763.2	412.4	-937.4	1,024.1	0.00	0.00	0.00	
3,960.0	18.27	293.75	3,801.1	417.5	-948.9	1,036.6	0.00	0.00	0.00	
4,000.0	18.27	293.75	3,839.1	422.5	-960.3	1,049.2	0.00	0.00	0.00	
4,040.0	18.27	293.75	3,877.1	427.6	-971.8	1,061.7	0.00	0.00	0.00	
4,080.0	18.27	293.75	3,915.1	432.6	-983.3	1,074.3	0.00	0.00	0.00	
4,120.0	18.27	293.75	3,953.1	437.7	-994.8	1,086.8	0.00	0.00	0.00	
4,160.0	18.27	293.75	3,991.1	442.7	-1,006.2	1,099.3	0.00	0.00	0.00	

Database:	Landmark	Local Co-ordinate Reference:	Well SRC Hawkstone 29-30DD
Company:	Synergy Resources	TVD Reference:	WELL @ 4896.0ft (RKB - 13')
Project:	SEC.29-T7N-R65W	MD Reference:	WELL @ 4896.0ft (RKB - 13')
Site:	SRC Hawkstone 29-30DD Pad	North Reference:	True
	Sec.29-T7N-R65W		
Well:	SRC Hawkstone 29-30DD	Survey Calculation Method:	Minimum Curvature
Wellbore:	Wellbore #1		
Design:	Plan #1 (12-30-13)		

Planned Survey									
Measured Depth (ft)	Inclination (°)	Azimuth (°)	Vertical Depth (ft)	+N/-S (ft)	+E/-W (ft)	Vertical Section (ft)	Dogleg Rate (°/100ft)	Build Rate (°/100ft)	Turn Rate (°/100ft)
4,200.0	18.27	293.75	4,029.1	447.8	-1,017.7	1,111.9	0.00	0.00	0.00
4,240.0	18.27	293.75	4,067.0	452.8	-1,029.2	1,124.4	0.00	0.00	0.00
4,280.0	18.27	293.75	4,105.0	457.9	-1,040.7	1,136.9	0.00	0.00	0.00
4,320.0	18.27	293.75	4,143.0	462.9	-1,052.1	1,149.5	0.00	0.00	0.00
4,360.0	18.27	293.75	4,181.0	468.0	-1,063.6	1,162.0	0.00	0.00	0.00
4,400.0	18.27	293.75	4,219.0	473.0	-1,075.1	1,174.6	0.00	0.00	0.00
4,440.0	18.27	293.75	4,257.0	478.1	-1,086.6	1,187.1	0.00	0.00	0.00
4,480.0	18.27	293.75	4,294.9	483.1	-1,098.1	1,199.6	0.00	0.00	0.00
4,520.0	18.27	293.75	4,332.9	488.2	-1,109.5	1,212.2	0.00	0.00	0.00
4,560.0	18.27	293.75	4,370.9	493.2	-1,121.0	1,224.7	0.00	0.00	0.00
4,600.0	18.27	293.75	4,408.9	498.3	-1,132.5	1,237.3	0.00	0.00	0.00
4,640.0	18.27	293.75	4,446.9	503.3	-1,144.0	1,249.8	0.00	0.00	0.00
4,680.0	18.27	293.75	4,484.9	508.4	-1,155.4	1,262.3	0.00	0.00	0.00
4,720.0	18.27	293.75	4,522.8	513.4	-1,166.9	1,274.9	0.00	0.00	0.00
4,760.0	18.27	293.75	4,560.8	518.5	-1,178.4	1,287.4	0.00	0.00	0.00
4,800.0	18.27	293.75	4,598.8	523.5	-1,189.9	1,299.9	0.00	0.00	0.00
4,840.0	18.27	293.75	4,636.8	528.6	-1,201.3	1,312.5	0.00	0.00	0.00
4,880.0	18.27	293.75	4,674.8	533.6	-1,212.8	1,325.0	0.00	0.00	0.00
4,920.0	18.27	293.75	4,712.8	538.7	-1,224.3	1,337.6	0.00	0.00	0.00
4,960.0	18.27	293.75	4,750.8	543.7	-1,235.8	1,350.1	0.00	0.00	0.00
5,000.0	18.27	293.75	4,788.7	548.8	-1,247.2	1,362.6	0.00	0.00	0.00
5,040.0	18.27	293.75	4,826.7	553.8	-1,258.7	1,375.2	0.00	0.00	0.00
5,080.0	18.27	293.75	4,864.7	558.9	-1,270.2	1,387.7	0.00	0.00	0.00
5,120.0	18.27	293.75	4,902.7	563.9	-1,281.7	1,400.2	0.00	0.00	0.00
5,160.0	18.27	293.75	4,940.7	569.0	-1,293.1	1,412.8	0.00	0.00	0.00
5,200.0	18.27	293.75	4,978.7	574.0	-1,304.6	1,425.3	0.00	0.00	0.00
5,240.0	18.27	293.75	5,016.6	579.1	-1,316.1	1,437.9	0.00	0.00	0.00
5,280.0	18.27	293.75	5,054.6	584.1	-1,327.6	1,450.4	0.00	0.00	0.00
5,320.0	18.27	293.75	5,092.6	589.2	-1,339.1	1,462.9	0.00	0.00	0.00
5,360.0	18.27	293.75	5,130.6	594.2	-1,350.5	1,475.5	0.00	0.00	0.00
5,400.0	18.27	293.75	5,168.6	599.3	-1,362.0	1,488.0	0.00	0.00	0.00
5,440.0	18.27	293.75	5,206.6	604.3	-1,373.5	1,500.6	0.00	0.00	0.00
5,480.0	18.27	293.75	5,244.5	609.4	-1,385.0	1,513.1	0.00	0.00	0.00
5,520.0	18.27	293.75	5,282.5	614.4	-1,396.4	1,525.6	0.00	0.00	0.00
5,540.5	18.27	293.75	5,302.0	617.0	-1,402.3	1,532.1	0.00	0.00	0.00
5,560.0	17.88	293.75	5,320.5	619.4	-1,407.9	1,538.1	2.00	-2.00	0.00
5,600.0	17.08	293.75	5,358.7	624.3	-1,418.9	1,550.1	2.00	-2.00	0.00
5,640.0	16.28	293.75	5,397.0	628.9	-1,429.4	1,561.6	2.00	-2.00	0.00
5,680.0	15.48	293.75	5,435.5	633.3	-1,439.4	1,572.5	2.00	-2.00	0.00
5,720.0	14.68	293.75	5,474.1	637.5	-1,448.9	1,582.9	2.00	-2.00	0.00
5,760.0	13.88	293.75	5,512.9	641.5	-1,457.9	1,592.8	2.00	-2.00	0.00
5,800.0	13.08	293.75	5,551.8	645.2	-1,466.5	1,602.1	2.00	-2.00	0.00
5,840.0	12.28	293.75	5,590.8	648.8	-1,474.5	1,610.9	2.00	-2.00	0.00
5,880.0	11.48	293.75	5,629.9	652.1	-1,482.0	1,619.1	2.00	-2.00	0.00
5,920.0	10.68	293.75	5,669.2	655.2	-1,489.1	1,626.8	2.00	-2.00	0.00
5,960.0	9.88	293.75	5,708.5	658.0	-1,495.6	1,634.0	2.00	-2.00	0.00
6,000.0	9.08	293.75	5,748.0	660.7	-1,501.6	1,640.6	2.00	-2.00	0.00
6,040.0	8.28	293.75	5,787.5	663.1	-1,507.2	1,646.6	2.00	-2.00	0.00
6,080.0	7.48	293.75	5,827.2	665.3	-1,512.2	1,652.1	2.00	-2.00	0.00
6,120.0	6.68	293.75	5,866.9	667.3	-1,516.7	1,657.0	2.00	-2.00	0.00
6,160.0	5.88	293.75	5,906.6	669.1	-1,520.7	1,661.4	2.00	-2.00	0.00
6,200.0	5.08	293.75	5,946.4	670.6	-1,524.2	1,665.2	2.00	-2.00	0.00
6,240.0	4.28	293.75	5,986.3	671.9	-1,527.2	1,668.5	2.00	-2.00	0.00

Database:	Landmark	Local Co-ordinate Reference:	Well SRC Hawkstone 29-30DD
Company:	Synergy Resources	TVD Reference:	WELL @ 4896.0ft (RKB - 13')
Project:	SEC.29-T7N-R65W	MD Reference:	WELL @ 4896.0ft (RKB - 13')
Site:	SRC Hawkstone 29-30DD Pad	North Reference:	True
	Sec.29-T7N-R65W		
Well:	SRC Hawkstone 29-30DD	Survey Calculation Method:	Minimum Curvature
Wellbore:	Wellbore #1		
Design:	Plan #1 (12-30-13)		

Planned Survey									
Measured Depth (ft)	Inclination (°)	Azimuth (°)	Vertical Depth (ft)	+N/-S (ft)	+E/-W (ft)	Vertical Section (ft)	Dogleg Rate (°/100ft)	Build Rate (°/100ft)	Turn Rate (°/100ft)
6,280.0	3.48	293.75	6,026.2	673.0	-1,529.6	1,671.2	2.00	-2.00	0.00
6,320.0	2.68	293.75	6,066.2	673.9	-1,531.6	1,673.3	2.00	-2.00	0.00
6,360.0	1.88	293.75	6,106.1	674.5	-1,533.1	1,674.9	2.00	-2.00	0.00
6,400.0	1.08	293.75	6,146.1	674.9	-1,534.0	1,675.9	2.00	-2.00	0.00
6,440.0	0.28	293.75	6,186.1	675.1	-1,534.4	1,676.4	2.00	-2.00	0.00
6,453.9	0.00	0.00	6,200.0	675.1	-1,534.5	1,676.4	2.00	-2.00	0.00
6,480.0	0.00	0.00	6,226.1	675.1	-1,534.5	1,676.4	0.00	0.00	0.00
6,520.0	0.00	0.00	6,266.1	675.1	-1,534.5	1,676.4	0.00	0.00	0.00
6,560.0	0.00	0.00	6,306.1	675.1	-1,534.5	1,676.4	0.00	0.00	0.00
6,600.0	0.00	0.00	6,346.1	675.1	-1,534.5	1,676.4	0.00	0.00	0.00
6,640.0	0.00	0.00	6,386.1	675.1	-1,534.5	1,676.4	0.00	0.00	0.00
6,680.0	0.00	0.00	6,426.1	675.1	-1,534.5	1,676.4	0.00	0.00	0.00
6,720.0	0.00	0.00	6,466.1	675.1	-1,534.5	1,676.4	0.00	0.00	0.00
6,760.0	0.00	0.00	6,506.1	675.1	-1,534.5	1,676.4	0.00	0.00	0.00
6,800.0	0.00	0.00	6,546.1	675.1	-1,534.5	1,676.4	0.00	0.00	0.00
6,840.0	0.00	0.00	6,586.1	675.1	-1,534.5	1,676.4	0.00	0.00	0.00
6,880.0	0.00	0.00	6,626.1	675.1	-1,534.5	1,676.4	0.00	0.00	0.00
6,920.0	0.00	0.00	6,666.1	675.1	-1,534.5	1,676.4	0.00	0.00	0.00
6,960.0	0.00	0.00	6,706.1	675.1	-1,534.5	1,676.4	0.00	0.00	0.00
7,000.0	0.00	0.00	6,746.1	675.1	-1,534.5	1,676.4	0.00	0.00	0.00
7,040.0	0.00	0.00	6,786.1	675.1	-1,534.5	1,676.4	0.00	0.00	0.00
7,080.0	0.00	0.00	6,826.1	675.1	-1,534.5	1,676.4	0.00	0.00	0.00
7,120.0	0.00	0.00	6,866.1	675.1	-1,534.5	1,676.4	0.00	0.00	0.00
7,160.0	0.00	0.00	6,906.1	675.1	-1,534.5	1,676.4	0.00	0.00	0.00
7,200.0	0.00	0.00	6,946.1	675.1	-1,534.5	1,676.4	0.00	0.00	0.00
7,240.0	0.00	0.00	6,986.1	675.1	-1,534.5	1,676.4	0.00	0.00	0.00
7,280.0	0.00	0.00	7,026.1	675.1	-1,534.5	1,676.4	0.00	0.00	0.00
7,320.0	0.00	0.00	7,066.1	675.1	-1,534.5	1,676.4	0.00	0.00	0.00
7,360.0	0.00	0.00	7,106.1	675.1	-1,534.5	1,676.4	0.00	0.00	0.00
7,400.0	0.00	0.00	7,146.1	675.1	-1,534.5	1,676.4	0.00	0.00	0.00
7,440.0	0.00	0.00	7,186.1	675.1	-1,534.5	1,676.4	0.00	0.00	0.00
7,480.0	0.00	0.00	7,226.1	675.1	-1,534.5	1,676.4	0.00	0.00	0.00
7,520.0	0.00	0.00	7,266.1	675.1	-1,534.5	1,676.4	0.00	0.00	0.00
7,560.0	0.00	0.00	7,306.1	675.1	-1,534.5	1,676.4	0.00	0.00	0.00
7,600.0	0.00	0.00	7,346.1	675.1	-1,534.5	1,676.4	0.00	0.00	0.00
7,639.9	0.00	0.00	7,386.0	675.1	-1,534.5	1,676.4	0.00	0.00	0.00

Database:	Landmark	Local Co-ordinate Reference:	Well SRC Hawkstone 29-30DD
Company:	Synergy Resources	TVD Reference:	WELL @ 4896.0ft (RKB - 13')
Project:	SEC.29-T7N-R65W	MD Reference:	WELL @ 4896.0ft (RKB - 13')
Site:	SRC Hawkstone 29-30DD Pad	North Reference:	True
	Sec.29-T7N-R65W		
Well:	SRC Hawkstone 29-30DD	Survey Calculation Method:	Minimum Curvature
Wellbore:	Wellbore #1		
Design:	Plan #1 (12-30-13)		

Targets									
Target Name									
- hit/miss target	Dip Angle	Dip Dir.	TVD	+N/-S	+E/-W	Northing	Easting	Latitude	Longitude
- Shape	(°)	(°)	(ft)	(ft)	(ft)	(ft)	(ft)		
LEGAL BOX 800' X 800'	0.00	0.00	6,700.0	676.1	-1,534.5	1,441,469.00	3,221,965.36	40.542489	-104.701337
- plan misses target center by 1.0ft at 6953.9ft MD (6700.0 TVD, 675.1 N, -1534.5 E)									
- Rectangle (sides W800.0 H800.0 D686.0)									
TARGET BHL 1320'F	0.00	0.00	6,200.0	675.1	-1,534.5	1,441,468.05	3,221,965.40	40.542486	-104.701337
- plan hits target center									
- Point									
TARGET CIRCLE 1320'F	0.00	0.00	6,700.0	675.1	-1,534.5	1,441,468.05	3,221,965.40	40.542486	-104.701337
- plan hits target center									
- Circle (radius 75.0)									
SHL 690'FSL & 233'F	0.00	0.00	1.0	0.0	0.0	1,440,806.88	3,223,505.88	40.540633	-104.695816
- plan hits target center									
- Point									