

Scale: 5" / 100'
Measured Depth Log

Well Name Pavistma SW #2

Location 1651' FSL, 190' FWL NWSW Sec. 32 T6N R67W

State Colorado

Country USA

API Number 05-123-36652-0000

Region DJ Basin

Spud Date 9-07-13

Surface Coordinates Lat: 40.440500
Long: -104.924820

Drilling Completed 9-10-13

County Weld

Rig Number Frontier #10

Field Wattenburg

Bottom Hole Coordinates (At completion of Lateral)

Lat:40.44056
Long: -104.90845

Ground Elevation 4,954'

K.B. Elevation 4,976.5'

Logged Interval 5,000'

To 7,743'

Total Depth TBD

Formation Codell

Type of Drilling Fluid Fresh Water

Company Tekton Windsor LLC

Address 640 Plaza Drive #290
Highlands Ranch, CO 80122

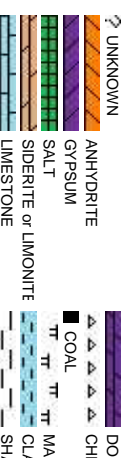
Name Dominic Pitre / Dan Scott

Company Empirica

6741 Satsuma Dr.
Houston, TX 77041
(713)-466-7400

ML-056

2 Man Logging Services
Start Date: 8-26-13
Release Date: TBD



Rd

Operator

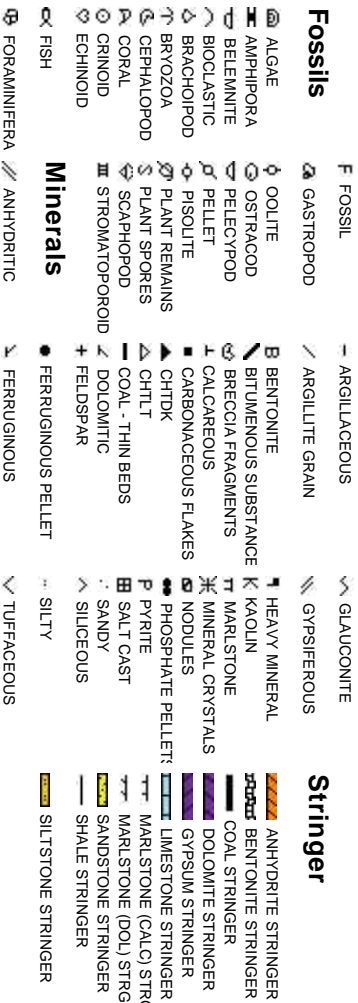
Geologist

Other

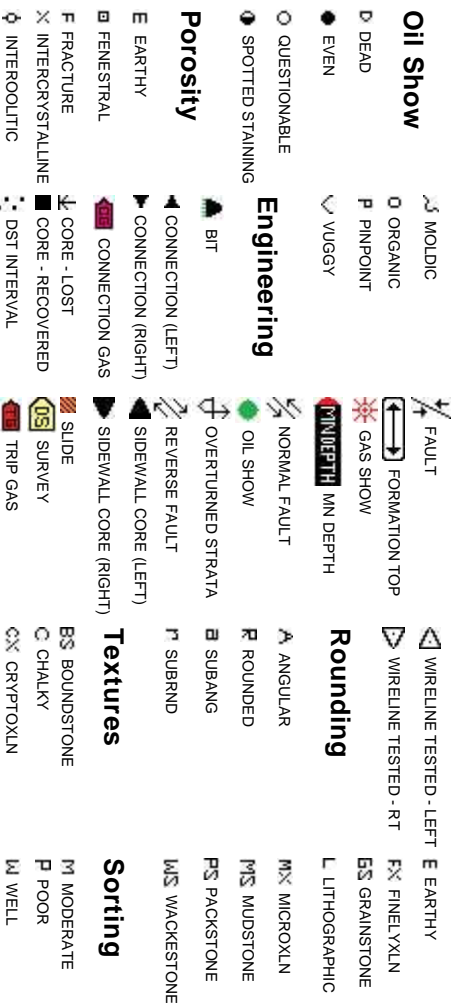
Rock Types



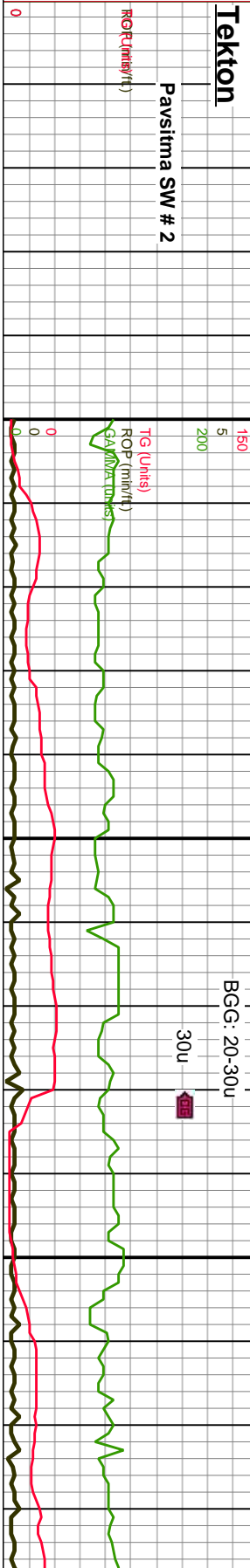
Accessories



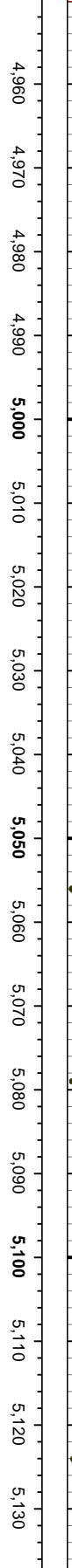
Other Symbols



ROP
 TG ———
 ROF ———
 GAMMA ———

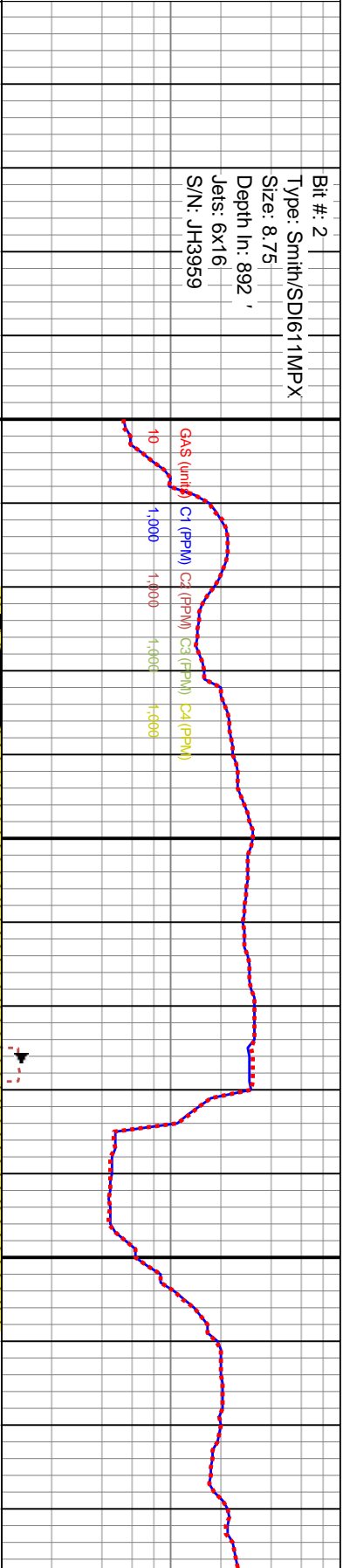


Slide/Rotate
 Depth Labels



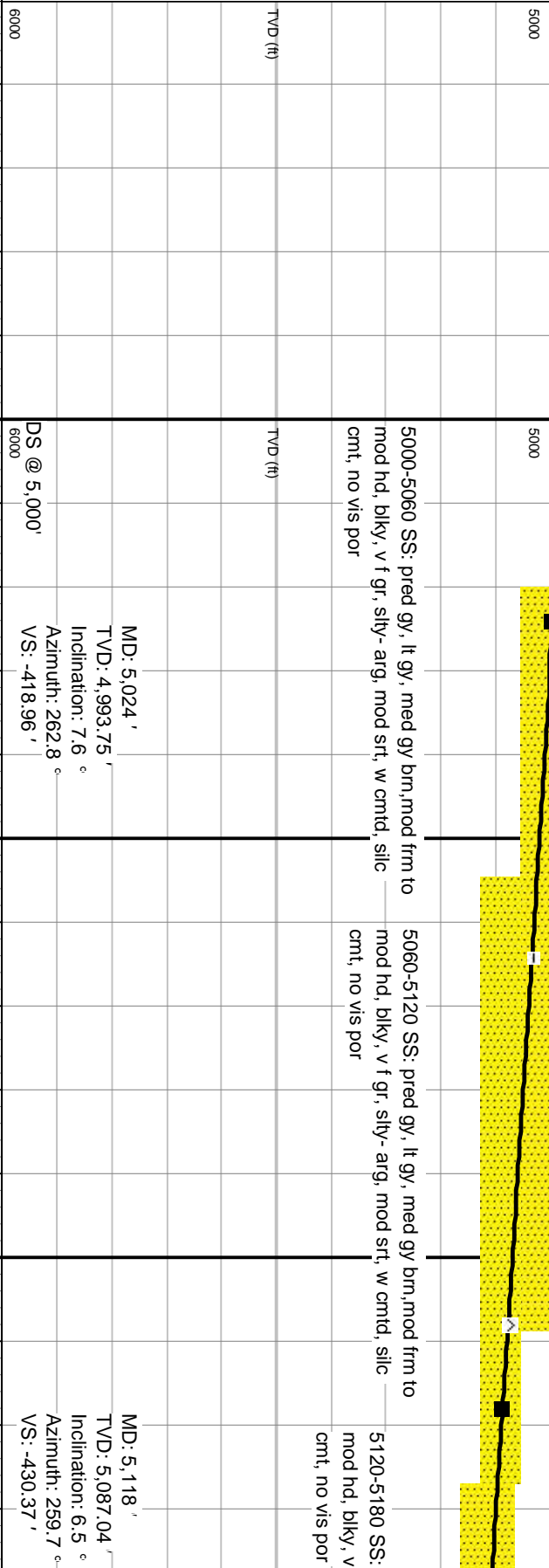
Total Gas & Chromatograph

GAS ———
 C1 ———
 C2 ———
 C3 ———
 C4 ———



Bit #: 2
 Type: Smith/SDI611MPX
 Size: 8.75
 Depth In: 892'
 Jets: 6x16
 S/N: JH3959

Well Bore
 TVD ———



5000-5060 SS: pred gy, lt gy, med gy brn, mod frm to mod hd, blk, v f gr, slty- arg, mod srt, w cmt, silic cmt, no vis por

5060-5120 SS: pred gy, lt gy, med gy brn, mod frm to mod hd, blk, v f gr, slty- arg, mod srt, w cmt, silic cmt, no vis por

5120-5180 SS: f mod hd, blk, v f cmt, no vis por

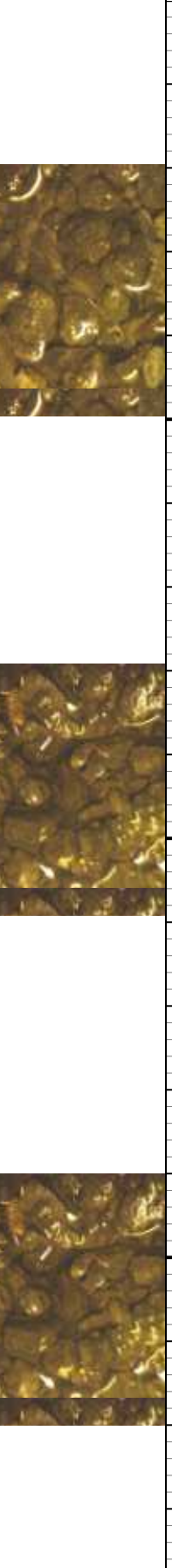
MD: 5.024'
 TVD: 4.993.75'
 Inclination: 7.6 °
 Azimuth: 262.8 °
 VS: -418.96'

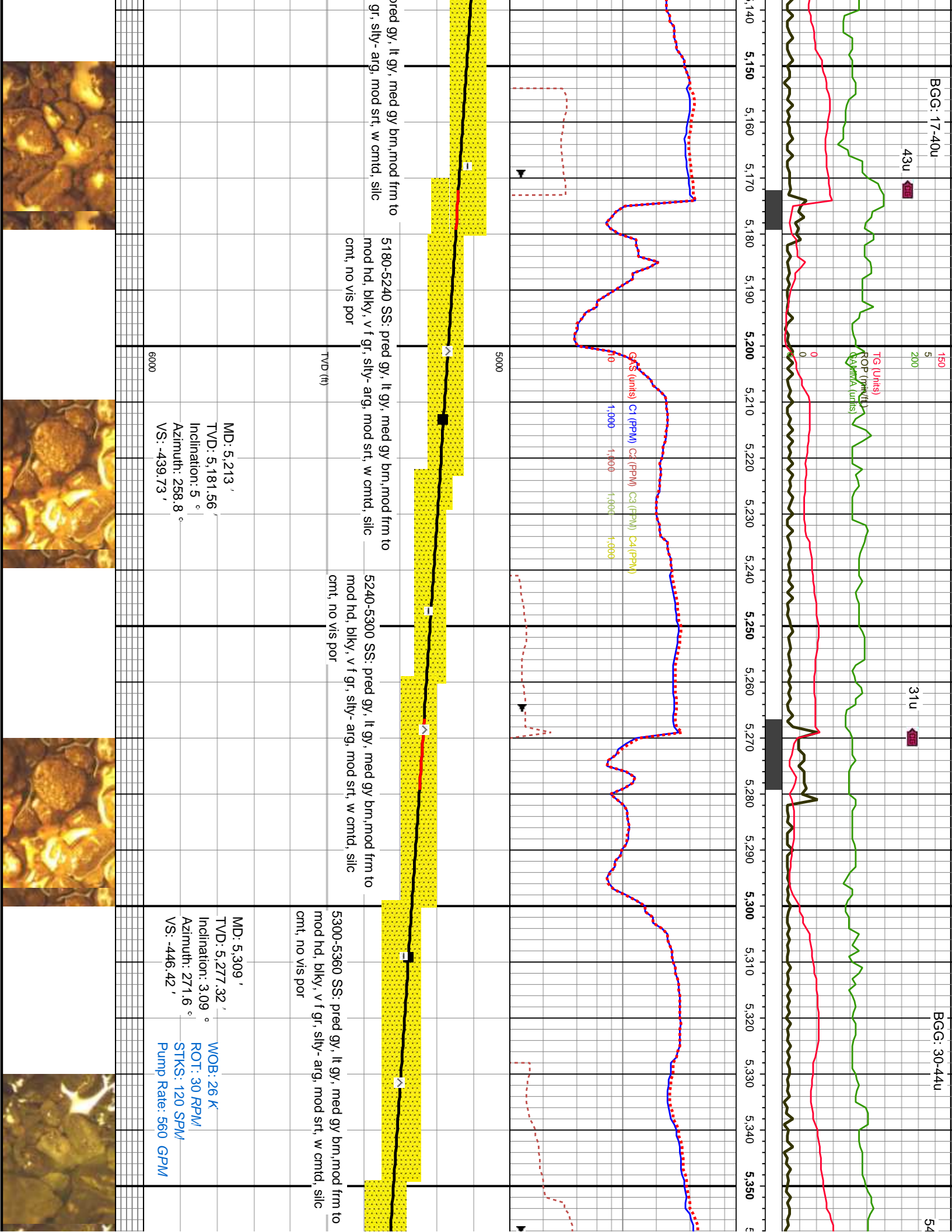
MD: 5.118'
 TVD: 5.087.04'
 Inclination: 6.5 °
 Azimuth: 259.7 °
 VS: -430.37'

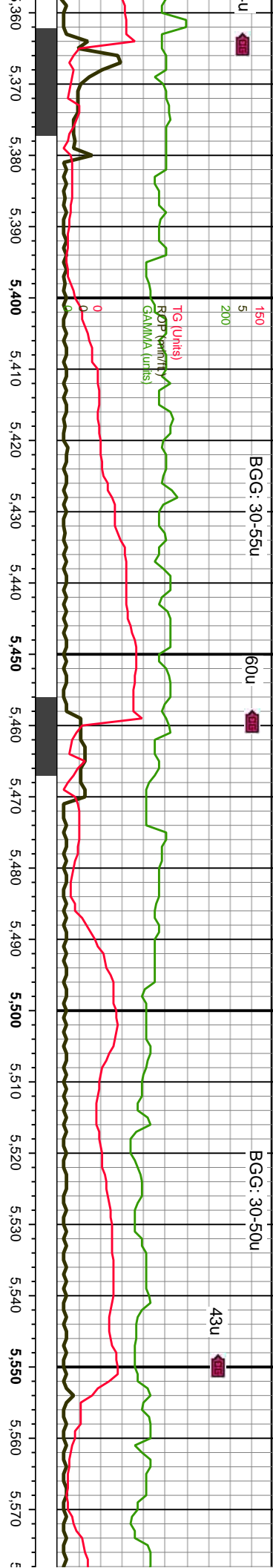
Oil Show



Images





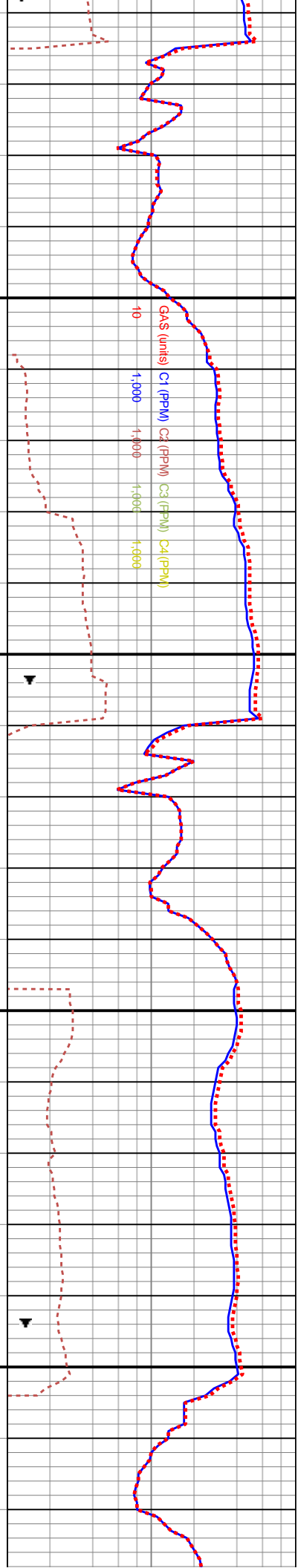


BGG: 30-55u

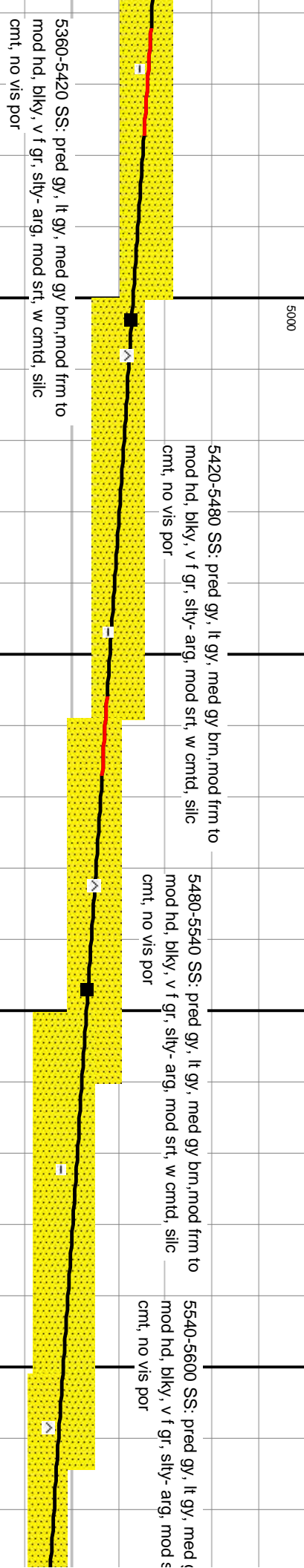
60u

BGG: 30-50u

43u



5000



5360-5420 SS: pred gy, lt gy, med gy brn, mod frm to mod hd, blkly, v f gr, slty- arg, mod srt, w cmtid, silic cmt, no vis por

5420-5480 SS: pred gy, lt gy, med gy brn, mod frm to mod hd, blkly, v f gr, slty- arg, mod srt, w cmtid, silic cmt, no vis por

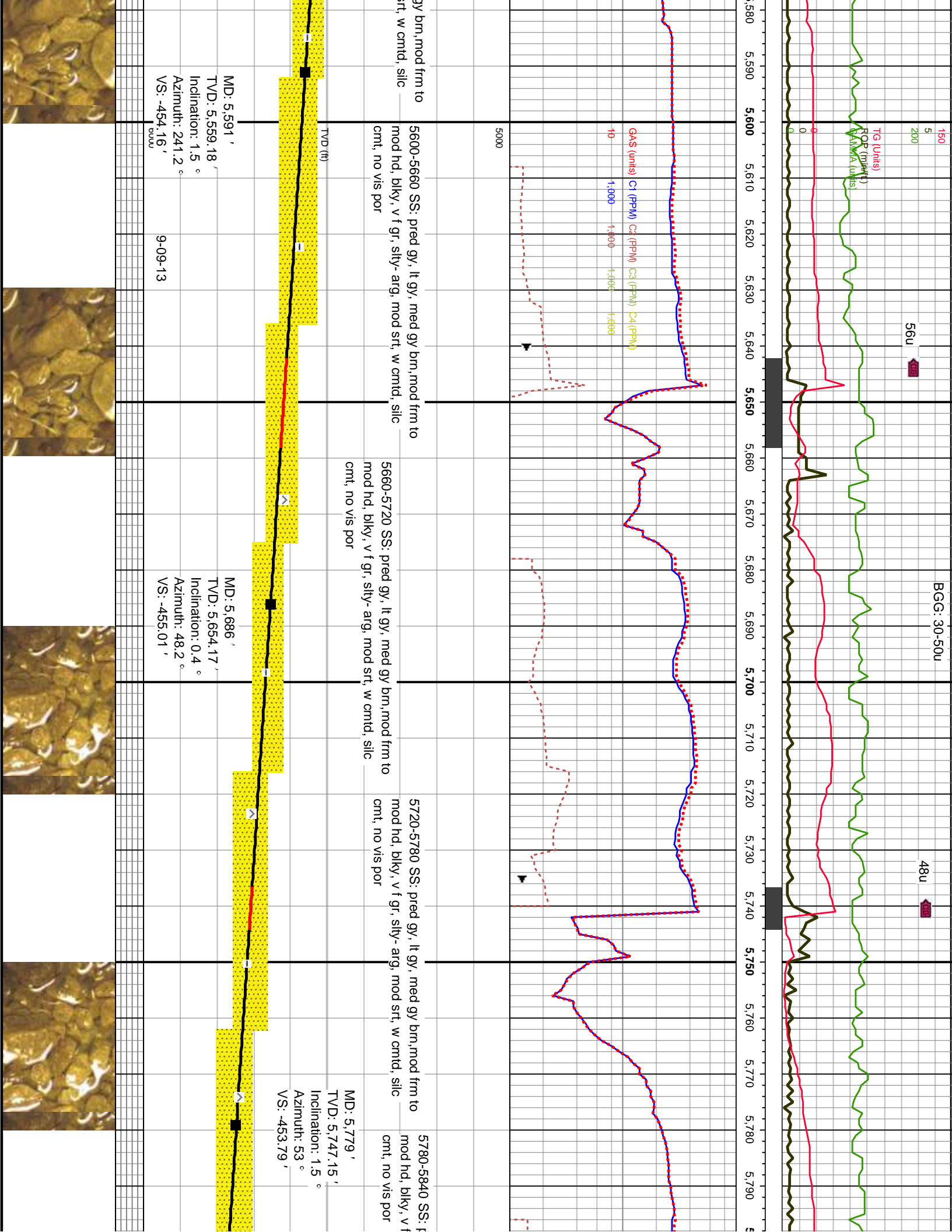
5480-5540 SS: pred gy, lt gy, med gy brn, mod frm to mod hd, blkly, v f gr, slty- arg, mod srt, w cmtid, silic cmt, no vis por

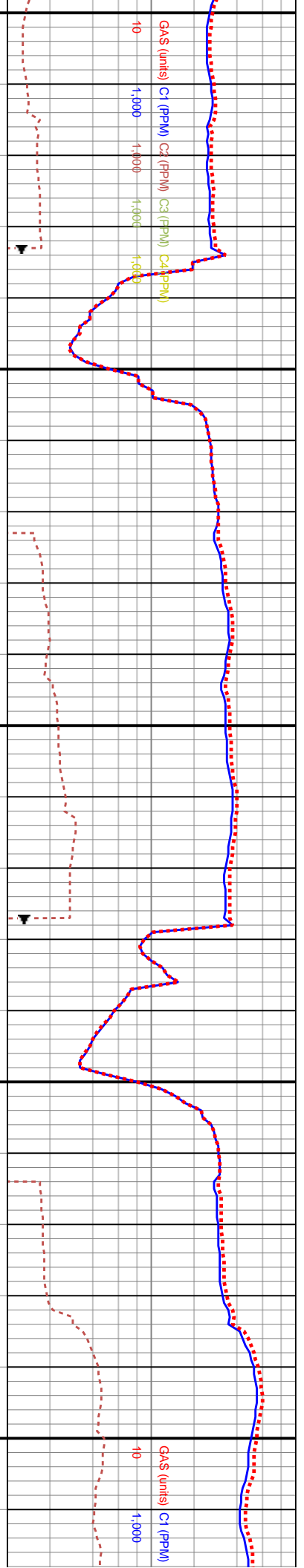
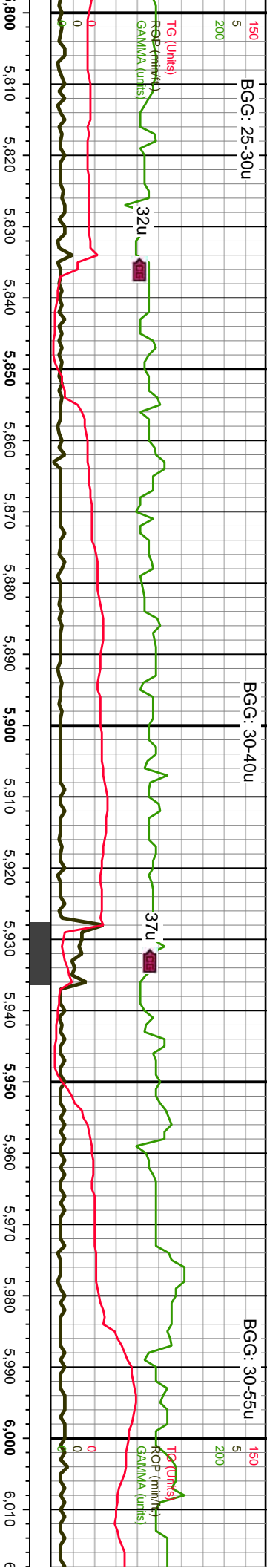
5540-5600 SS: pred gy, lt gy, med gy brn, mod frm to mod hd, blkly, v f gr, slty- arg, mod srt, w cmtid, silic cmt, no vis por

MD: 5.403 '
 TVD: 5.371.23 '
 Inclination: 1.9 °
 Azimuth: 283.9 °
 VS: -450.46 ' 600u

MD: 5.497 '
 TVD: 5.465.2 '
 Inclination: 1.1 °
 Azimuth: 217.5 °
 VS: -452.53 ' 600u







WOB: 26 K
 ROT: 37 RPM
 STKS: 118 SPM
 Pump Rate: 550 GPM

pred gy, lt gy, med gy brn, mod frm to
 gr, slty-arg, mod srt, w cmtid, silc

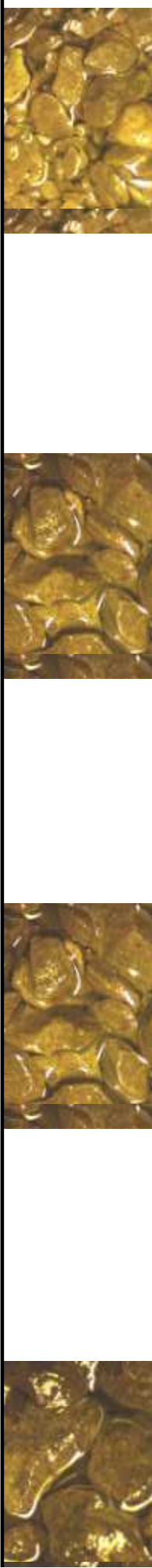
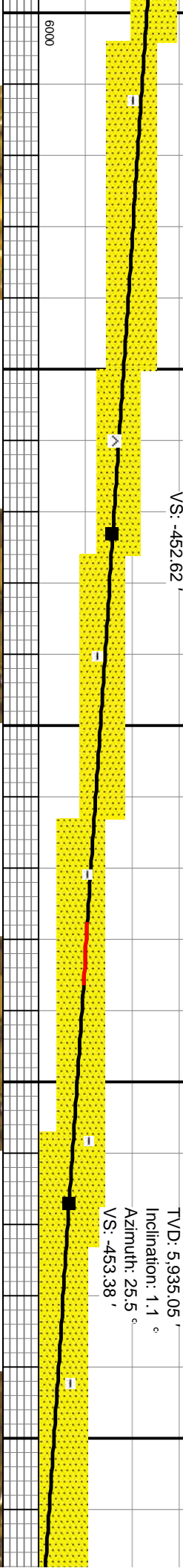
5840-5900 SS: pred gy, lt gy, med gy brn, mod frm to
 mod hd, blkly, v f gr, slty-arg, mod srt, w cmtid, silc
 cmt, no vis por

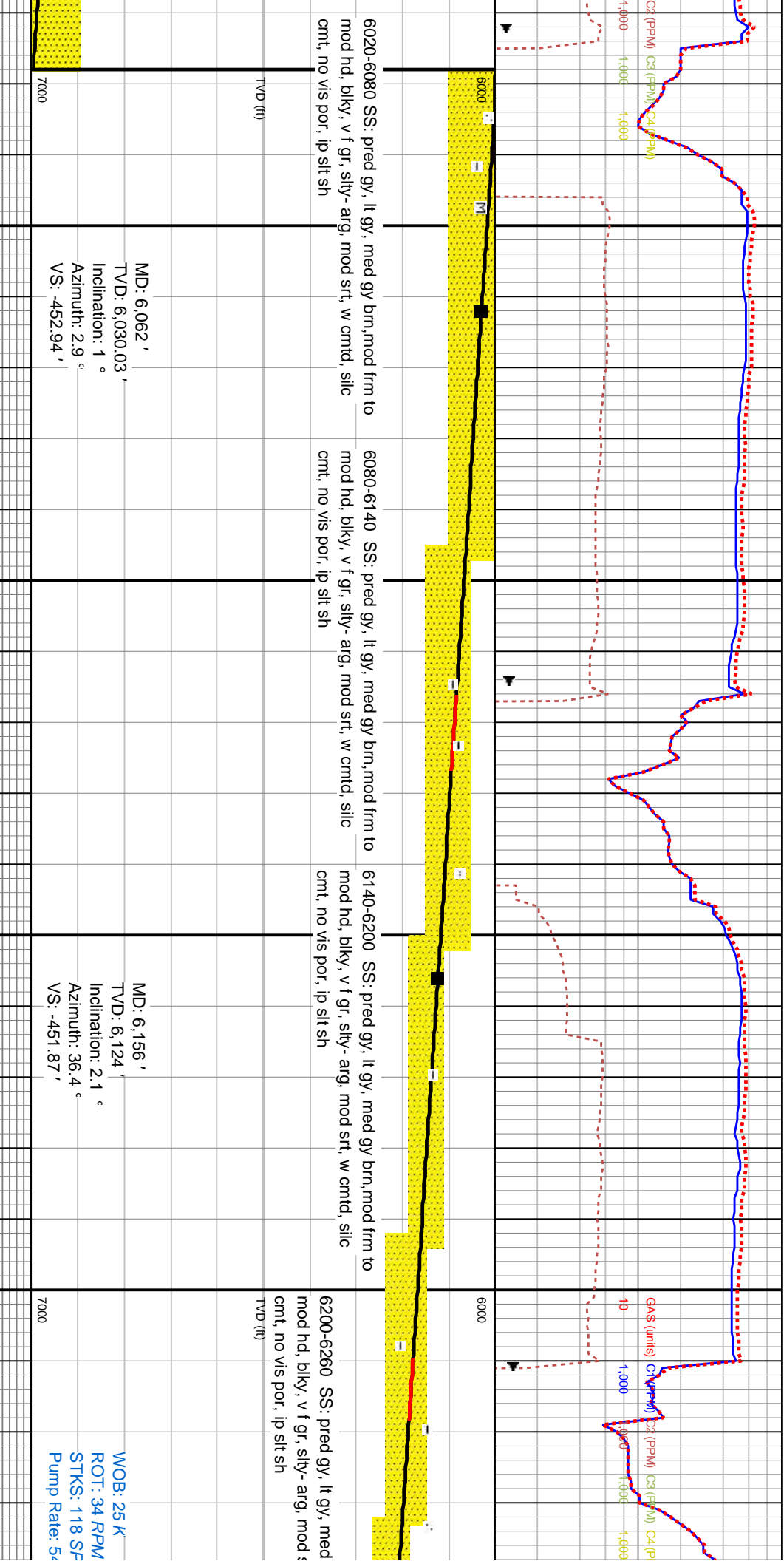
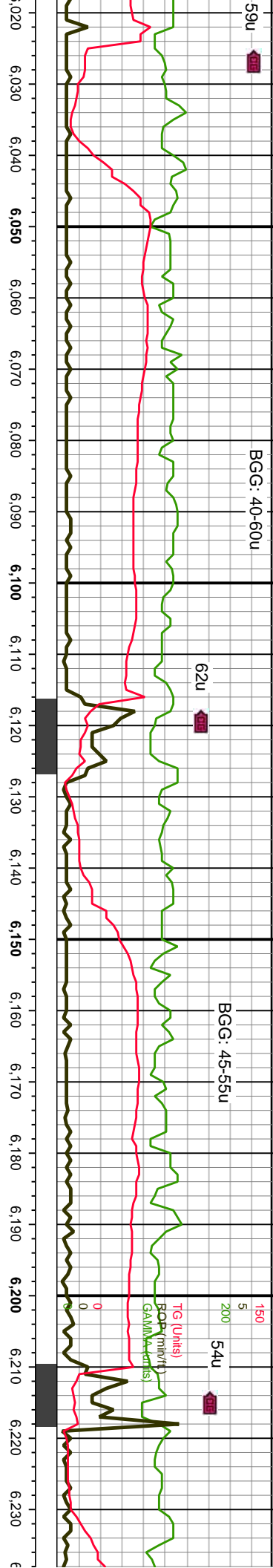
5900-5960 SS: pred gy, lt gy, med gy brn, mod frm to
 mod hd, blkly, v f gr, slty-arg, mod srt, w cmtid, silc
 cmt, no vis por, ip slty sh

5960-6020 SS: pred gy, lt gy, med gy brn, mod frm to
 mod hd, blkly, v f gr, slty-arg, mod srt, w cmtid, silc
 cmt, no vis por, ip slt sh

MD: 5,873 '
 TVD: 5,841.14 '
 Inclination: 0.6 °
 Azimuth: 21.5 °
 VS: -452.62 '

MD: 5,967 '
 TVD: 5,935.05 '
 Inclination: 1.1 °
 Azimuth: 25.5 °
 VS: -453.38 '

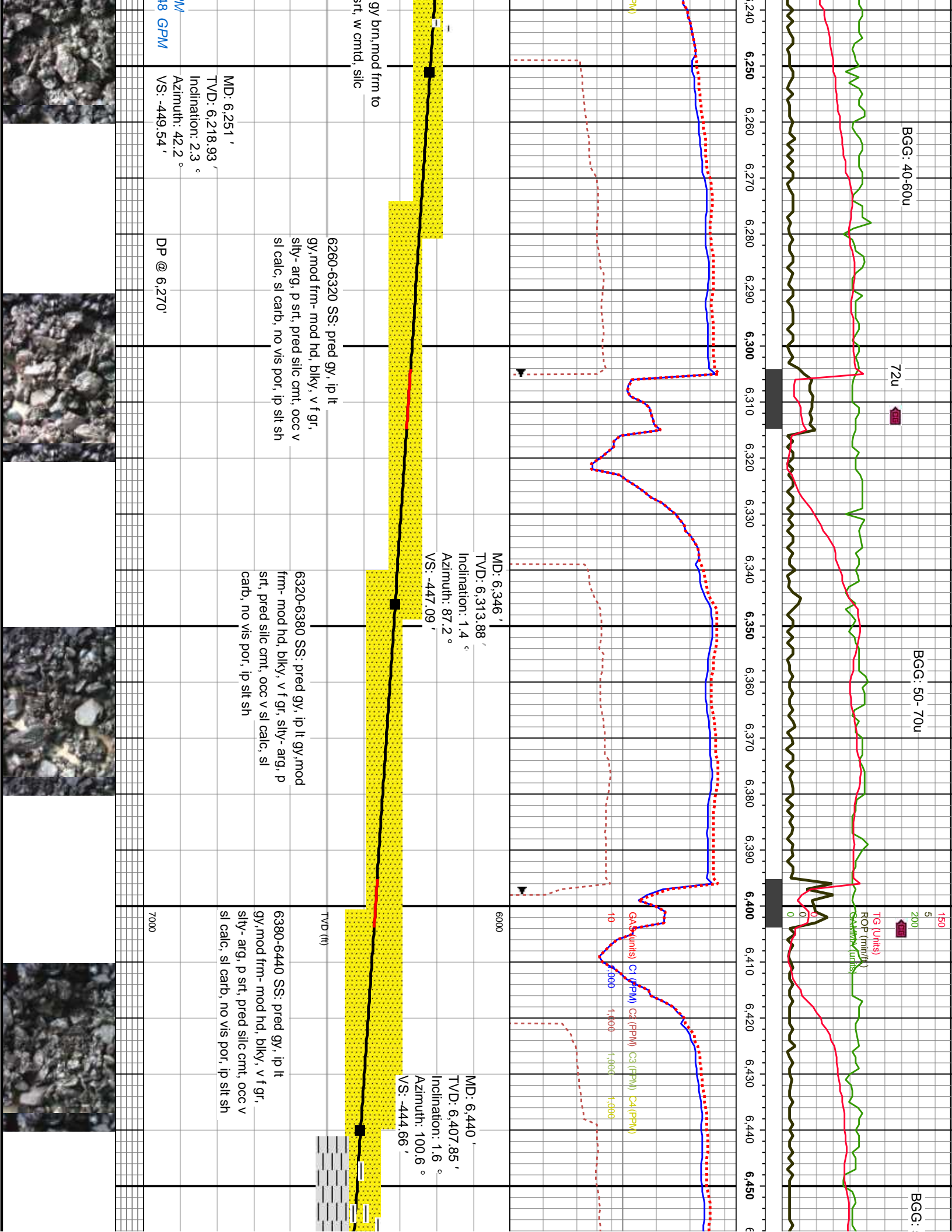


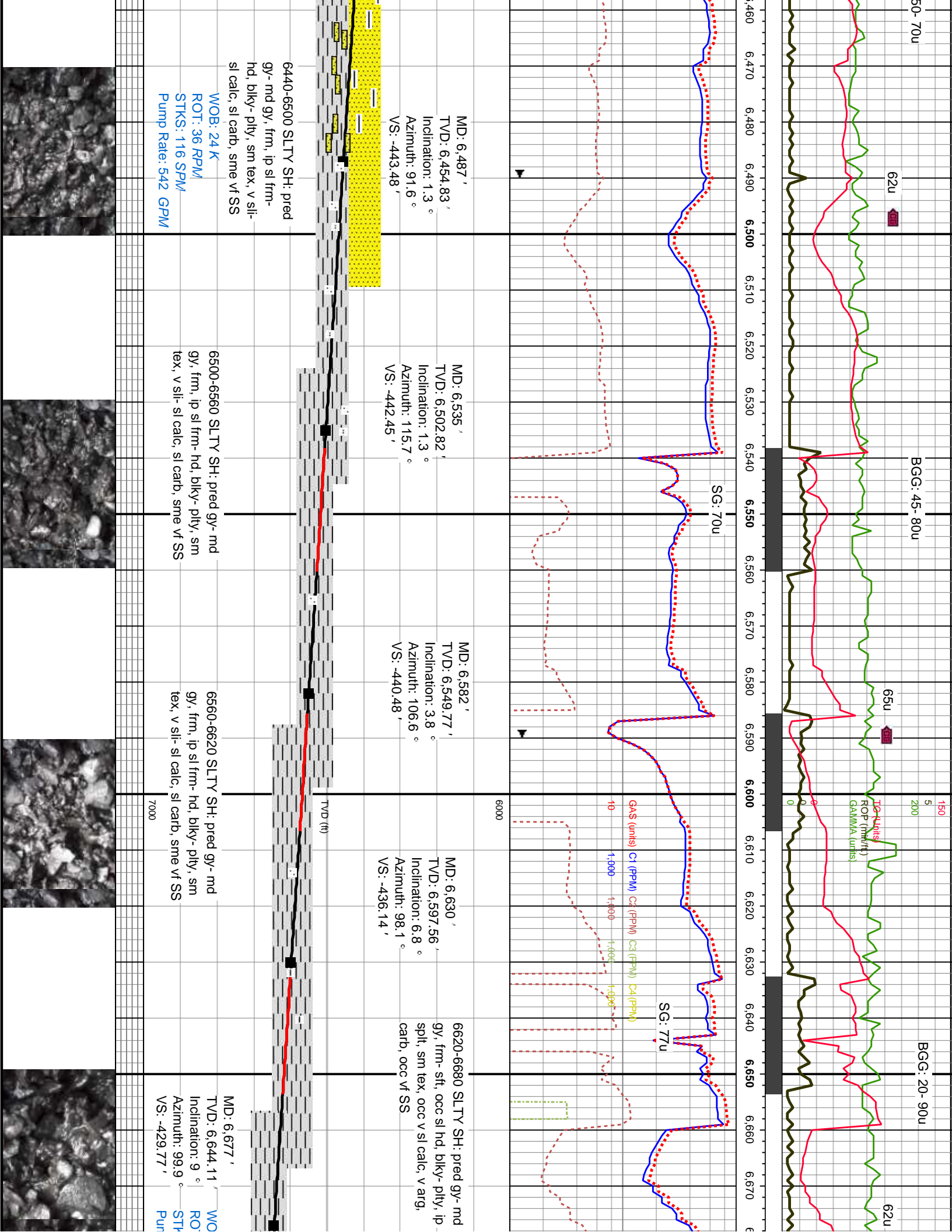


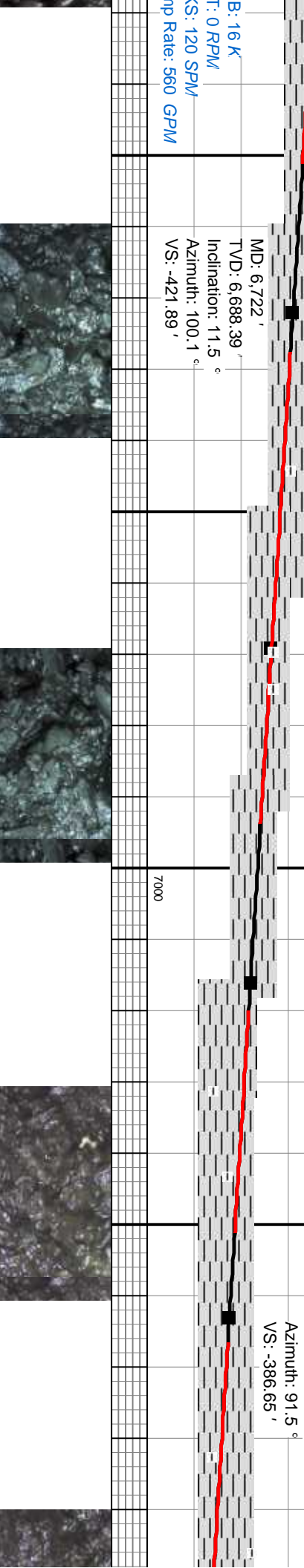
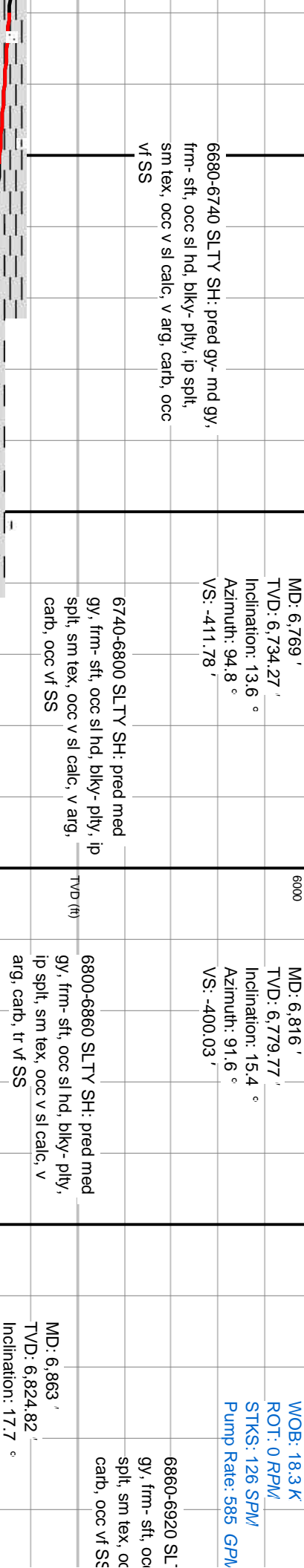
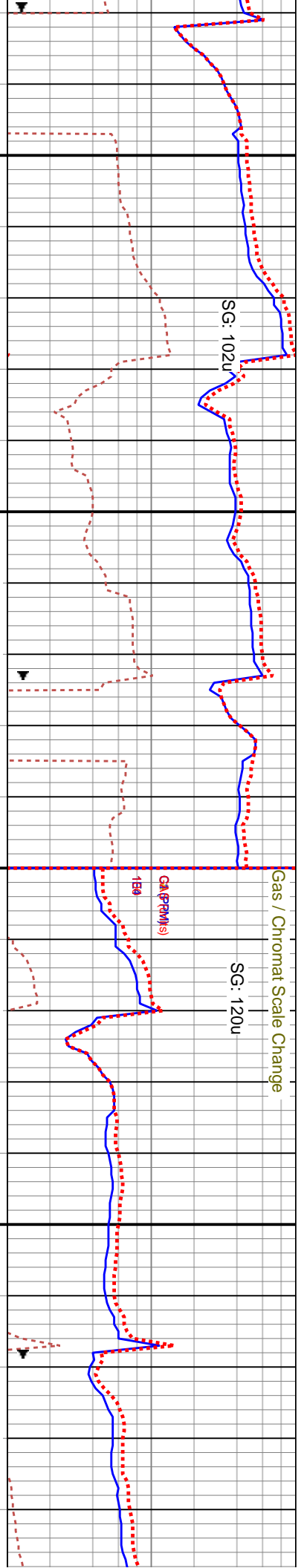
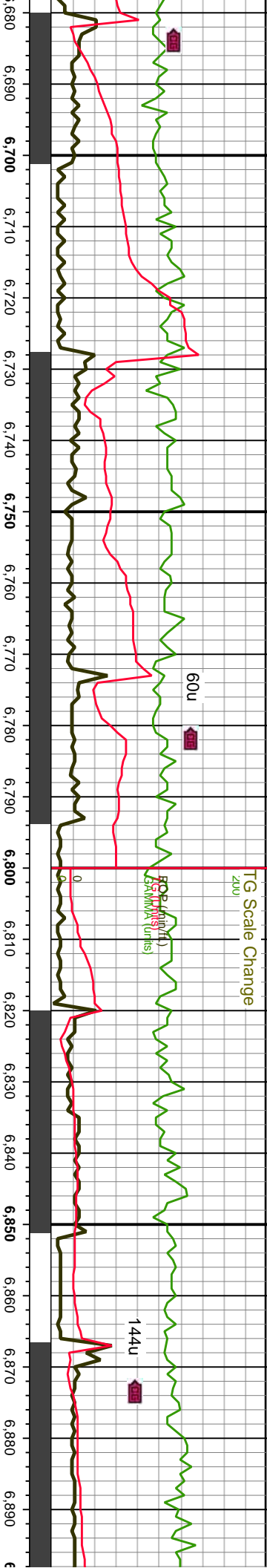
MD: 6,062 '
 TVD: 6,030.03 '
 Inclination: 1 °
 Azimuth: 2.9 °
 VS: -452.94 '

MD: 6,156 '
 TVD: 6,124 '
 Inclination: 2.1 °
 Azimuth: 36.4 °
 VS: -451.87 '

WOB: 25 K
 ROT: 34 RPM
 STKS: 118 SF
 Pump Rate: 5







B: 16 K
 T: 0 RPM
 S: 120 SPM
 Pump Rate: 560 GPM

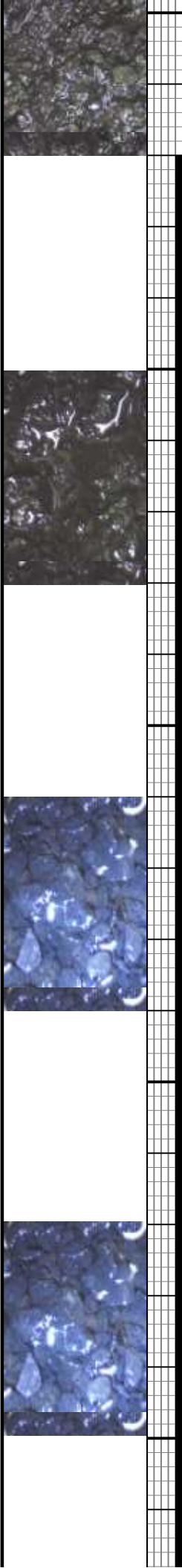
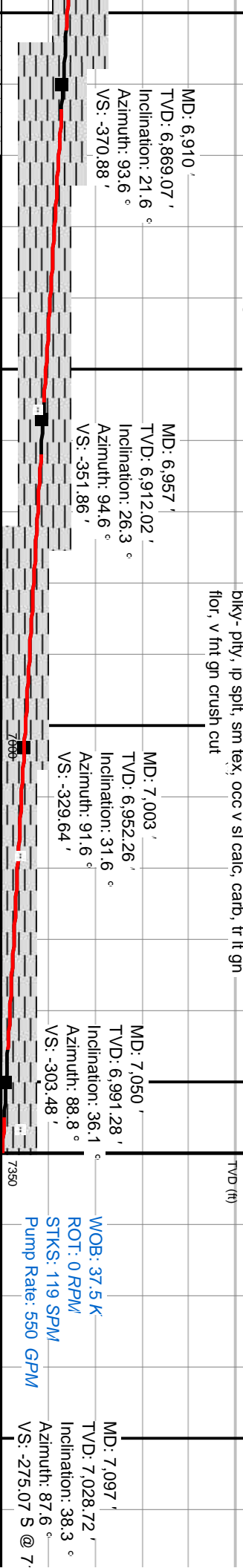
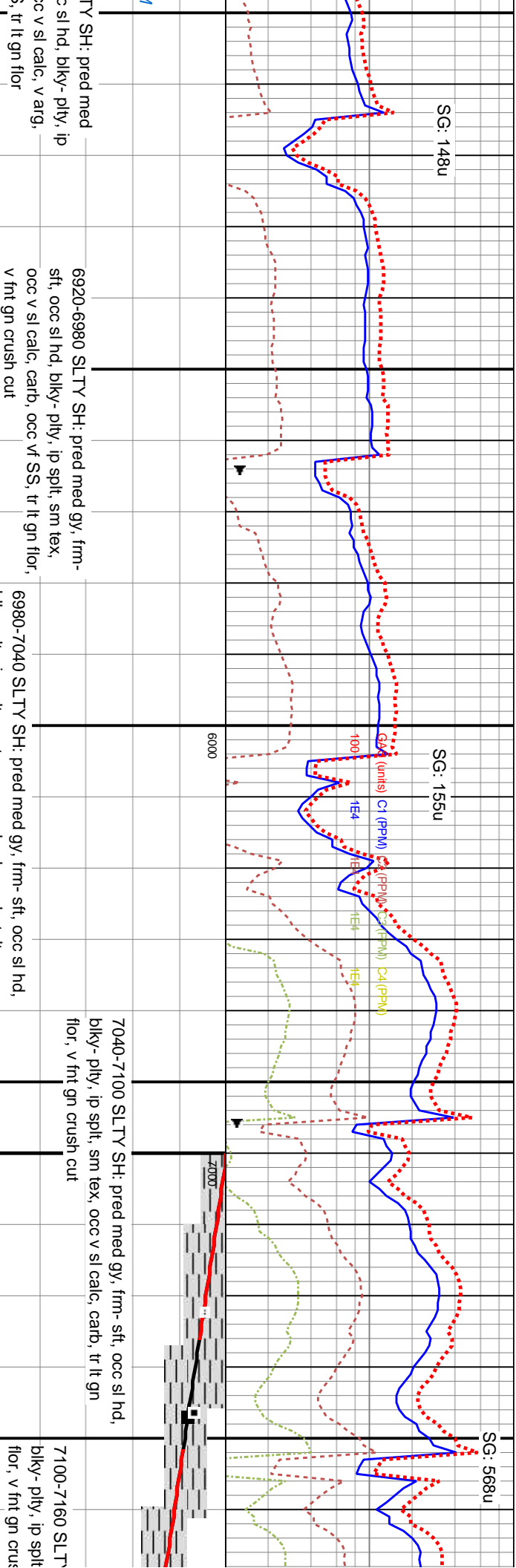
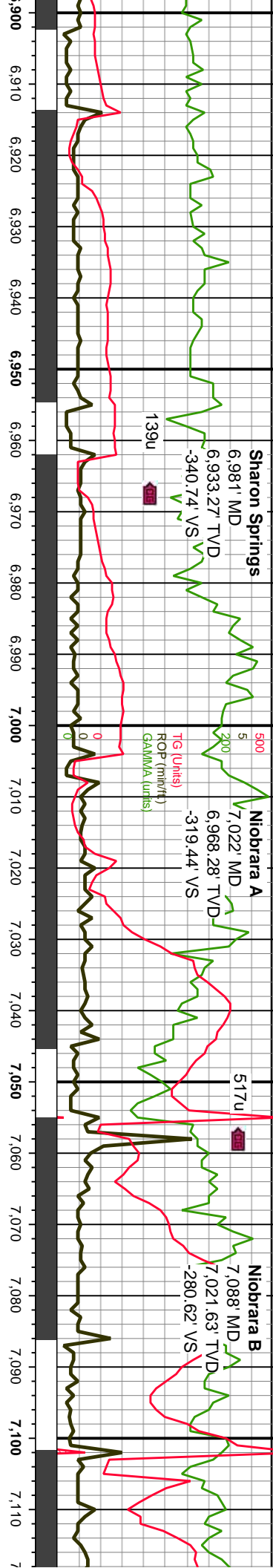
MD: 6,722'
 TVD: 6,688.39'
 Inclination: 11.5°
 Azimuth: 100.1°
 VS: -421.89'

MD: 6,769'
 TVD: 6,734.27'
 Inclination: 13.6°
 Azimuth: 94.8°
 VS: -411.78'

MD: 6,816'
 TVD: 6,779.77'
 Inclination: 15.4°
 Azimuth: 91.6°
 VS: -400.03'

MD: 6,863'
 TVD: 6,824.82'
 Inclination: 17.7°
 Azimuth: 91.5°
 VS: -386.65'

WOB: 18.3 K
 ROT: 0 RPM
 STKS: 126 SPM
 Pump Rate: 585 GPM



MD: 6,910'
 TVD: 6,869.07'
 Inclination: 21.6°
 Azimuth: 93.6°
 VS: -370.88'

MD: 6,957'
 TVD: 6,912.02'
 Inclination: 26.3°
 Azimuth: 94.6°
 VS: -351.86'

MD: 7,003'
 TVD: 6,952.26'
 Inclination: 31.6°
 Azimuth: 91.6°
 VS: -329.64'

MD: 7,050'
 TVD: 6,991.28'
 Inclination: 36.1°
 Azimuth: 88.8°
 VS: -303.48'

MD: 7,097'
 TVD: 7,028.72'
 Inclination: 38.3°
 Azimuth: 87.6°
 VS: -275.07 S @ 7

WOB: 37.5 K
 ROT: 0 RPM
 STKS: 119 SPM
 Pump Rate: 550 GPM

6920-6980 SLTY SH: pred med gy, frm-sft, occ sl hd, blk-pty, ip spl, sm tex, occ v sl calc, carb, occ v fnt gn crush cut

6980-7040 SLTY SH: pred med gy, frm-sft, occ sl hd, blk-pty, ip spl, sm tex, occ v sl calc, carb, tr lt gn flr, v fnt gn crush cut

7040-7100 SLTY SH: pred med gy, frm-sft, occ sl hd, blk-pty, ip spl, sm tex, occ v sl calc, carb, tr lt gn flr, v fnt gn crush cut

7100-7160 SLTY SH: pred med gy, frm-sft, occ sl hd, blk-pty, ip spl, sm tex, occ v sl calc, carb, tr lt gn flr, v fnt gn crush cut

7160-7220 SLTY SH: pred med gy, frm-sft, occ sl hd, blk-pty, ip spl, sm tex, occ v sl calc, carb, tr lt gn flr, v fnt gn crush cut

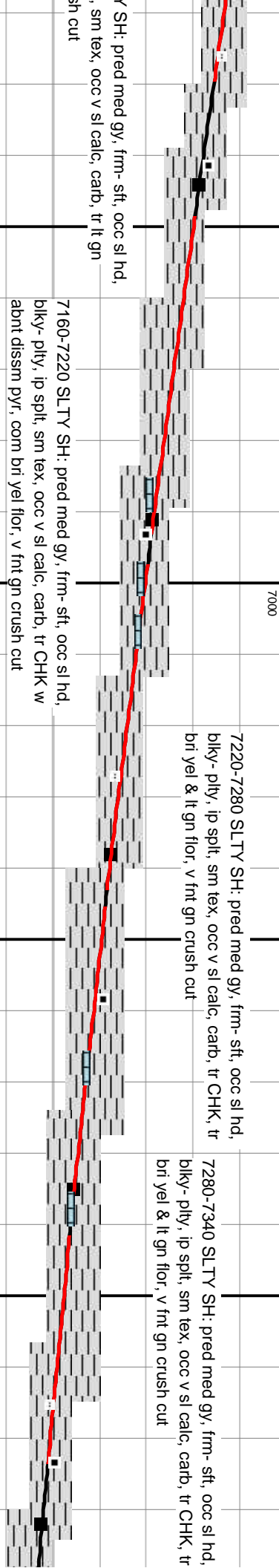
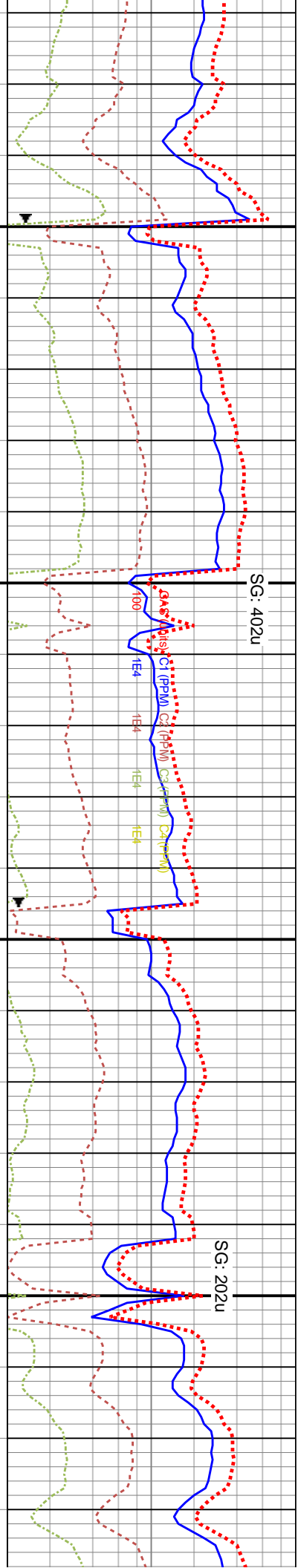
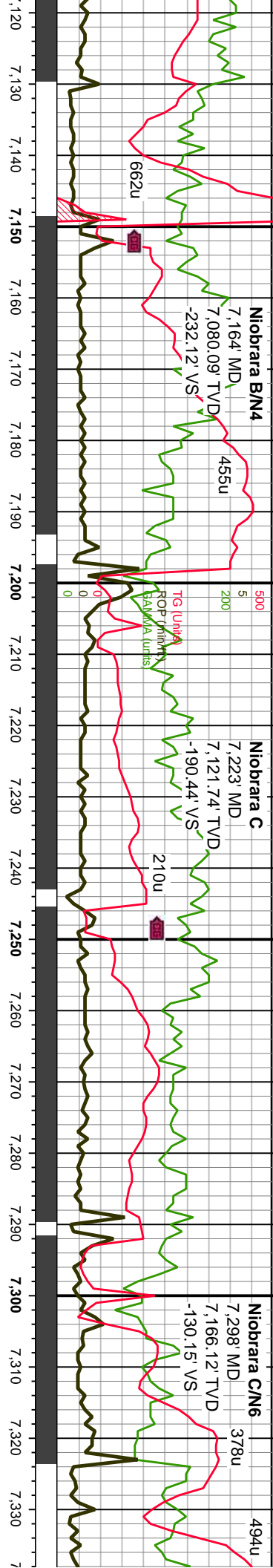
TY SH: pred med gy, frm-sft, occ sl hd, blk-pty, ip spl, sm tex, occ v sl calc, carb, occ v fnt gn crush cut

TY SH: pred med gy, frm-sft, occ sl hd, blk-pty, ip spl, sm tex, occ v sl calc, carb, occ v fnt gn crush cut

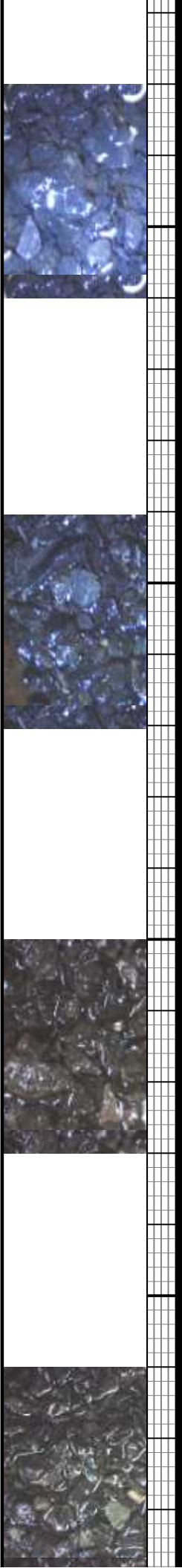
TY SH: pred med gy, frm-sft, occ sl hd, blk-pty, ip spl, sm tex, occ v sl calc, carb, tr lt gn flr, v fnt gn crush cut

TY SH: pred med gy, frm-sft, occ sl hd, blk-pty, ip spl, sm tex, occ v sl calc, carb, tr lt gn flr, v fnt gn crush cut

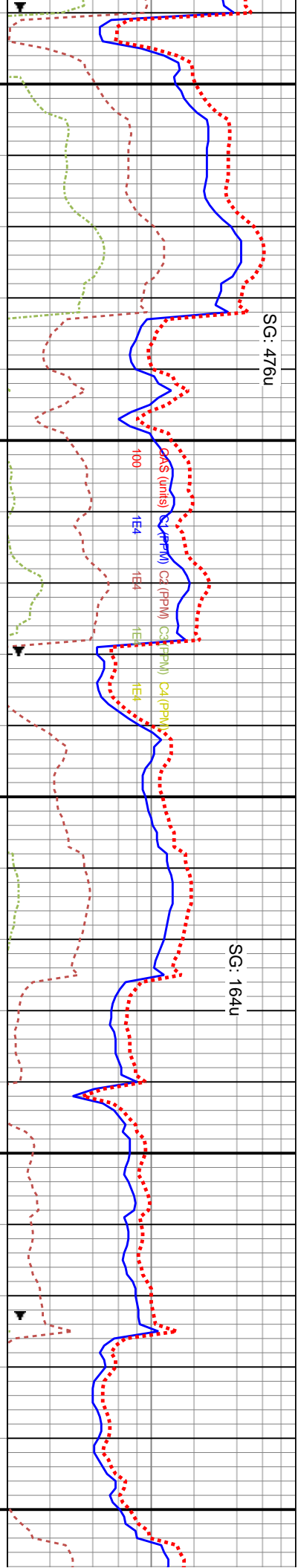
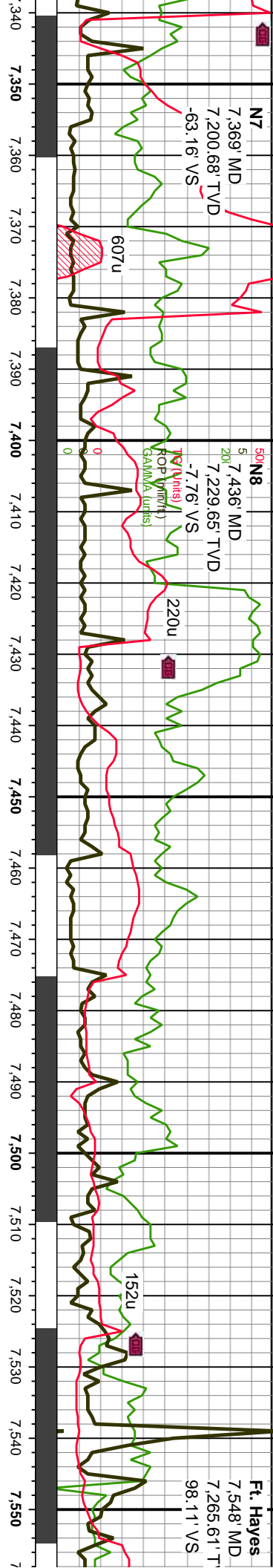
TY SH: pred med gy, frm-sft, occ sl hd, blk-pty, ip spl, sm tex, occ v sl calc, carb, tr lt gn flr, v fnt gn crush cut



MD	TVD	Inclination	Azimuth	VS
7,144'	7,065.06'	40.4°	87.2°	-245.3'
7,191'	7,099.73'	44.5°	86.4°	-213.63'
7,238'	7,131.47'	50.5°	86.5°	-179.05'
7,285'	7,159.18'	57.2°	89°	-141.14'



DS @ 7,140'



7340-7400 SLTY SH: pred med gy, frm- sft, occ sl hd, blkly- ply, ip spl, sm tex, occ v sl calc, carb, tr CHK, com bri yel flor & tr lt gn flor, v fnt gn crush cut

7400-7460 SLTY SH: pred med gy, lt gy, frm- sft, occ sl hd, blkly- ply, ip spl, sm tex, occ v sl calc, carb, com CHK, com bri yel flor & tr lt gn flor, v fnt gn crush cut

7460-7490 SLTY SH: pred med gy, lt gy, frm- sft, occ sl hd, blkly- ply, ip spl, sm tex, occ v sl calc, carb, com CHK, com bri yel flor & tr lt gn flor, v fnt gn crush cut

7490-7520 LS: mudst, crm-off wh, lt gy bm, microxin, frm, dns, rthy-cky tex, com bri yel flor, tr lt gn flor, no cut, no visible por, SLTY SH: AA

7520-7580 LS: mudst, crm-off wh, l frm, dns, rthy-cky tex, v tr lt gn flor

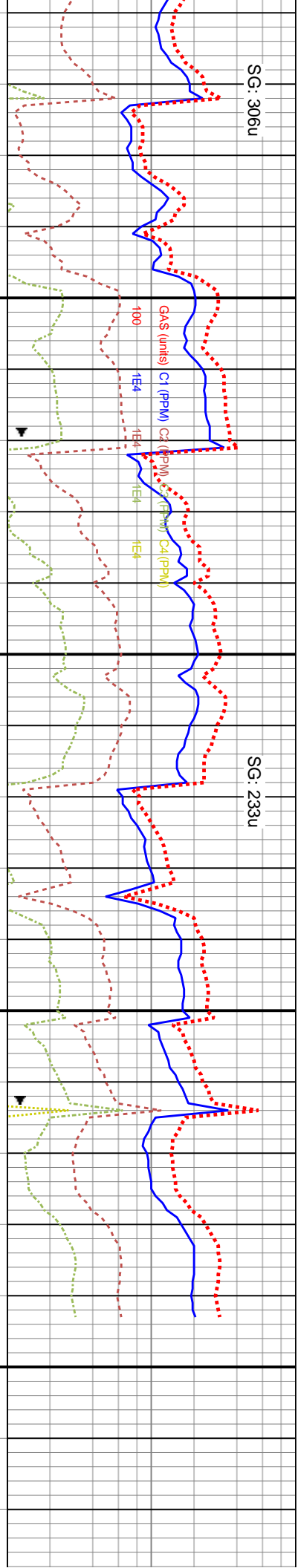
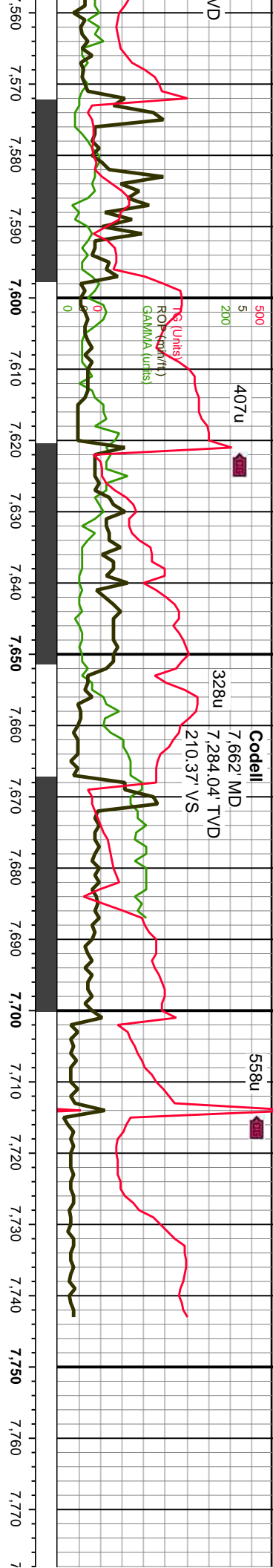
MD: 7,332' TVD: 7,203.87' Inclination: 63.1° Azimuth: 88.6° VS: -61.93'

MD: 7,423' TVD: 7,224.32' Inclination: 65.3° Azimuth: 90° VS: -19.62'

MD: 7,471' TVD: 7,242.88' Inclination: 69.2° Azimuth: 91.5° VS: 24.63'

MD: 7,518' TVD: 7,257.79' Inclination: 73.8° Azimuth: 91.6° VS: 69.17'





7580-7640 L.S.: mudst, crm-off wh, buff, lt gy brn, microxin, frm, dns, rthy-chky tex, v tr lt gn flor, no cut, no visible por

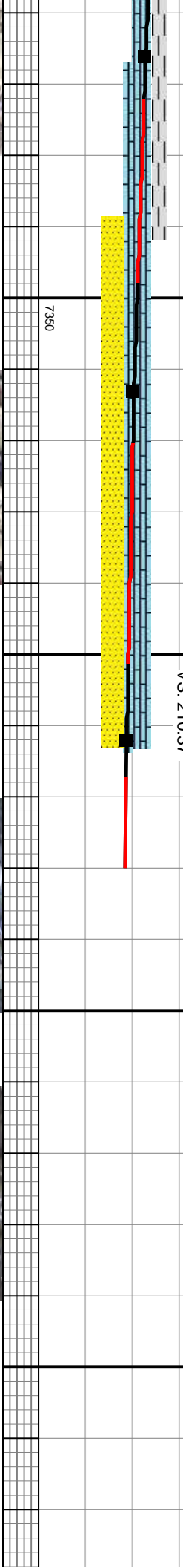
7640-7700 SS.: med gy brn, lt gy-lt gy brn, trnsi qtz grns, v-f-grnd, fir-firm, sb md-rnd, w srd, calc cntd, ply cntd, tr intrgr por, tr bri yel flor, LS: mudst, crm-off wh, buff, lt gy brn, microxin, frm, dns, rthy-chky tex, v tr lt gn flor, no cut, no visible por

7700-7730 SS.: med gy brn, lt gy-lt gy brn, trnsi qtz grns, v-f-grnd, fir-firm, sb rnd-rnd, w srd, calc cntd, ply cntd, tr intrgr por, tr bri yel flor

ID: 7,566 '
 VD: 7,269.77 '
 Inclination: 77.3 °
 Azimuth: 92.2 °
 VS: 115.61 '

MD: 7,613 '
 TVD (th)TVD: 7,278.49 '
 Inclination: 81.3 °
 Azimuth: 92.5 °
 VS: 161.73 '

MD: 7,662 '
 TVD: 7,284.04 '
 Inclination: 85.7 °
 Azimuth: 91.3 °
 VS: 210.37 '



**TD of Curve reached at
 on 9/10/13 at a depth of**

