

The Road to Excellence Starts with Safety

Sold To #: 345242	Ship To #: 2253980	Quote #:	Sales Order #: 900687486
Customer: NOBLE ENERGY INC E-BUSINESS		Customer Rep: Monaghan, Kevin	
Well Name: Trebor	Well #: B11-03	API/UWI #:	
Field: Wattenberg	City (SAP): GREELEY	County/Parish: Weld	State: Colorado
Contractor:		Rig/Platform Name/Num: Workover Leed 711	
Job Purpose: Recement Service			
Well Type: Development Well		Job Type: Recement Service	
Sales Person: FLING, MATTHEW		Srv Supervisor: BULINSKI, MATTHEW	MBU ID Emp #: 483865

Job Personnel

HES Emp Name	Exp Hrs	Emp #	HES Emp Name	Exp Hrs	Emp #	HES Emp Name	Exp Hrs	Emp #
ALVARADO, JOSE Angel	3	505918	BULINSKI, MATTHEW J	3	483865	BULINSKI, MATTHEW J	3	483865
OSBORNE, DANIEL Ryan	3	551419	TRANCOSO, JEFFREY Donald	1.5	550472	Wiley, James	1.5	

Equipment

HES Unit #	Distance-1 way	HES Unit #	Distance-1 way	HES Unit #	Distance-1 way	HES Unit #	Distance-1 way
10866497 C	45 mile	11542778	45 mile	11605598	45 mile	11764737	45 mile

Job Hours

Date	On Location Hours	Operating Hours	Date	On Location Hours	Operating Hours	Date	On Location Hours	Operating Hours
8-23-13	3	1						
TOTAL			Total is the sum of each column separately					

Job

Formation Name	Formation Depth (MD)	Top	Bottom	Form Type	Job depth MD	Job Depth TVD	Water Depth	Perforation Depth (MD)	From	To	Job Times	Date	Time	Time Zone
				BHST	1500. ft	1500. ft	Wk Ht Above Floor				Called Out	23 - Aug - 2013	07:00	MST
											On Location	23 - Aug - 2013	00:00	MST
											Job Started	23 - Aug - 2013	00:00	MST
											Job Completed	23 - Aug - 2013	00:00	MST
											Departed Loc	23 - Aug - 2013	00:00	MST

Well Data

Description	New / Used	Max pressure psig	Size in	ID in	Weight lbm/ft	Thread	Grade	Top MD ft	Bottom MD ft	Top TVD ft	Bottom TVD ft
4 1/2" Production Casing	Unknown		4.5	3.826	15.1	BTC	J-55	.	1500.		
1 1/4" CSI Tubing Drill Pipe	Unknown		1.25	.671	3.02	8 RD	P-110	.	1500.		

Tools and Accessories

Type	Size	Qty	Make	Depth	Type	Size	Qty	Make	Depth	Type	Size	Qty	Make
Guide Shoe					Packer					Top Plug			
Float Shoe					Bridge Plug					Bottom Plug			
Float Collar					Retainer					SSR plug set			
Insert Float										Plug Container			
Stage Tool										Centralizers			

Miscellaneous Materials

Gelling Agt	Conc	Surfactant	Conc	Acid Type	Qty	Conc	%
Treatment Fld	Conc	Inhibitor	Conc	Sand Type	Size	Qty	

Fluid Data

Stage/Plug #: 1

Fluid #	Stage Type	Fluid Name	Qty	Qty uom	Mixing Density lbm/gal	Yield ft ³ /sk	Mix Fluid Gal/sk	Rate bbl/min	Total Mix Fluid Gal/sk
1	15.8# Cement	HALCEM (TM) SYSTEM (452986)	380.0	sacks	15.8	1.15	5.0		5.0
	5 Gal	FRESH WATER							
Calculated Values		Pressures		Volumes					
Displacement	1.25	Shut In: Instant		Lost Returns	0	Cement Slurry	82	Pad	
Top Of Cement	442	5 Min		Cement Returns	0	Actual Displacement	1.25	Treatment	
Frac Gradient		15 Min		Spacers	5	Load and Breakdown		Total Job	88.25
Rates									
Circulating		Mixing		Displacement		Avg. Job			
Cement Left In Pipe	Amount	0 ft	Reason	Shoe Joint					
Frac Ring # 1 @	ID	Frac ring # 2 @	ID	Frac Ring # 3 @	ID	Frac Ring # 4 @	ID		
The Information Stated Herein Is Correct				Customer Representative Signature					

The Road to Excellence Starts with Safety

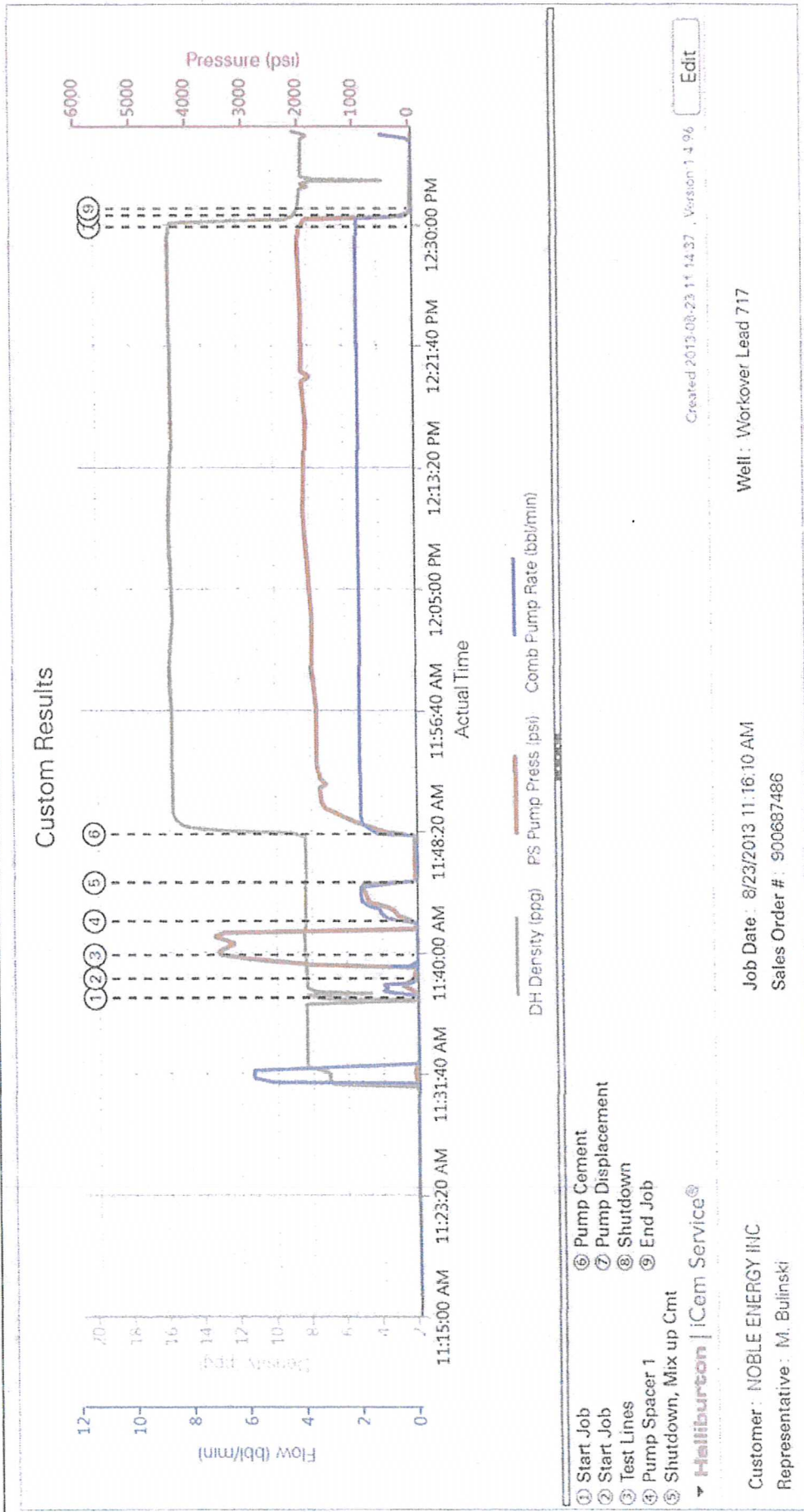
Sold To #: 345242		Ship To #: 2253980		Quote #:		Sales Order #: 900687486	
Customer: NOBLE ENERGY INC E-BUSINESS				Customer Rep: Monagham, Kevin			
Well Name: Trebor			Well #: B11-03		API/UWI #:		
Field: Wattenberg		City (SAP): GREELEY		County/Parish: Weld		State: Colorado	
Legal Description:							
Lat:				Long:			
Contractor:			Rig/Platform Name/Num: Workover Leed 711				
Job Purpose: Recement Service						Ticket Amount:	
Well Type: Development Well			Job Type: Recement Service				
Sales Person: FLING, MATTHEW			Srv Supervisor: BULINSKI, MATTHEW/MBU ID Emp #: 483865				

Activity Description	Date/Time	Cht #	Rate bbl/ min	Volume bbl		Pressure psig		Comments
				Stage	Total	Tubing	Casing	
Depart Yard Safety Meeting	08/23/2013 09:00							JSA on Pre-Tripping trucks and driving to Location
Arrive at Location from Service Center	08/23/2013 10:30							Arrived to Location 60 mins early and rig is waiting on HES ready to go.....
Assessment Of Location Safety Meeting	08/23/2013 10:35							Hazard Hunt on Location before spotting in trucks
Safety Meeting - Pre Rig-Up	08/23/2013 10:40							JSA on rigging up Bulk trucks and Iron to rig
Rig-Up Equipment	08/23/2013 10:45							
Rig-Up Completed	08/23/2013 11:15							
Safety Meeting - Pre Job	08/23/2013 11:15							JSA with company man, rig hands and HES hands on job schedual
Start Job	08/23/2013 11:38							
Test Lines	08/23/2013 11:39							3500psi Pressure Test Lines to Rig Floor
Pump Spacer 1	08/23/2013 11:42		2	5		971.0		H2O spacer to catch returns
Shutdown	08/23/2013 11:44							Weigh up Cmt 15.8ppg
Pump Cement	08/23/2013 11:48		2	82	87	2032.0		400sks Premium-Mtn G, 15.8ppg, 1.15yield, 5.00gal/sk, Mixed with water off Tanker truck provided by rig and # verify by pressurized mud scales
Pump Displacement	08/23/2013 12:29		2	1.25	88.25	2000.0		H2O displacment

Activity Description	Date/Time	Cht #	Rate bbl/ min	Volume bbl		Pressure psig		Comments
				Stage	Total	Tubing	Casing	
Shutdown	08/23/2013 12:30							
End Job	08/23/2013 12:31							
Safety Meeting - Pre Rig- Down	08/23/2013 12:32							Safety Huddle by supervisor truck on rigging down bulk trucks and iron from rig
Rig-Down Equipment	08/23/2013 12:40							
Rig-Down Completed	08/23/2013 13:25							
Safety Meeting - Departing Location	08/23/2013 13:30							JSA on Pre-tripping trucks and driving back to Brighton Yard

2.0 Custom Graphs

2.1 Custom Graph



1.1 Job Event Log

Time	Description	Graph Label	Downhole Density (ppg)	Pass-Side Pump Pressure (psi)	Combined Pump Rate (bb/min)	Comment
11:37:01	Start Job	Start Job	8.39	-5.00	0.00	
11:38:22	Start Job	Start Job	8.37	29.00	0.00	
11:39:58	Test Lines	Test Lines	8.36	3591.00	0.00	3500psi Pressure Test Lines
11:42:18	Pump Spacer 1	Pump Spacer 1	8.34	151.00	1.00	5bbis H2O spacer
11:44:57	Shutdown	Shutdown, Mix up Cmt	8.35	43.00	0.00	Mix up Cmt
11:48:17	Pump Cement	Pump Cement	12.47	566.00	1.50	400sk G cmt, 15.8ppg, 1.15yield, 5.0gal/sk
12:29:59	Pump Displacement	Pump Displacement	15.80	2018.00	2.00	1.25bbis H2O
12:30:46	Shutdown	Shutdown	8.62	41.00	0.00	Release psi
12:31:15	End Job	End Job	8.42	0.00	0.00	