



NABORS

**COMPLETION
& PRODUCTION
SERVICES CO.**

SONIC LOG

Company		MULL DRILLING COMPANY, INC.	
Well	DICKEY "A" #1-14		
Field			
County	CHEYENNE	State	COLORADO
Location:	APL # : 05-017-07776-0000 1927' FNL & 1119' FEL		Other Services CDL/CNL/PE DIL/MEL
Permanent Datum	SEC 14	TWP 16S	RGE 45W
Log Measured From	GROUND LEVEL		Elevation 4368
Drilling Measured From	KELLY BUSHING 11' A.G.L.		Elevation K.B. 4379 D.F. 4377 G.L. 4368
Date	1/5/14		
Run Number	TWO		
Depth Driller	5560		
Depth Logger	5562		
Bottom Logged Interval	5552		
Top Log Interval	600		
Casing Driller	8 5/8" @ 647		
Casing Logger	640		
Bit Size	7 7/8"		
Type Fluid in Hole	CHEMICAL MUD		CHLORIDES 5000 PPM
Density / Viscosity	9.1/54		
pH / Fluid Loss	10.0/8.0		
Source of Sample	FLOWLINE		
Rm @ Meas. Temp	.70 @ 50F		
Rmt @ Meas. Temp	.52 @ 50F		
Rmc @ Meas. Temp	.84 @ 50F		
Source of Rmt / Rmc	MEASUREMENT		
Rm @ BHT	.26 @ 130F		
Time Circulation Stopped	2 HOURS		
Time Logger on Bottom			
Maximum Recorded Temperature	130F		
Equipment Number	4010		
Location	HAYS, KANSAS		
Recorded By	JASON CAPPELLUCCI		
Witnessed By	PHIL ASKEY		

<<< Fold Here >>>

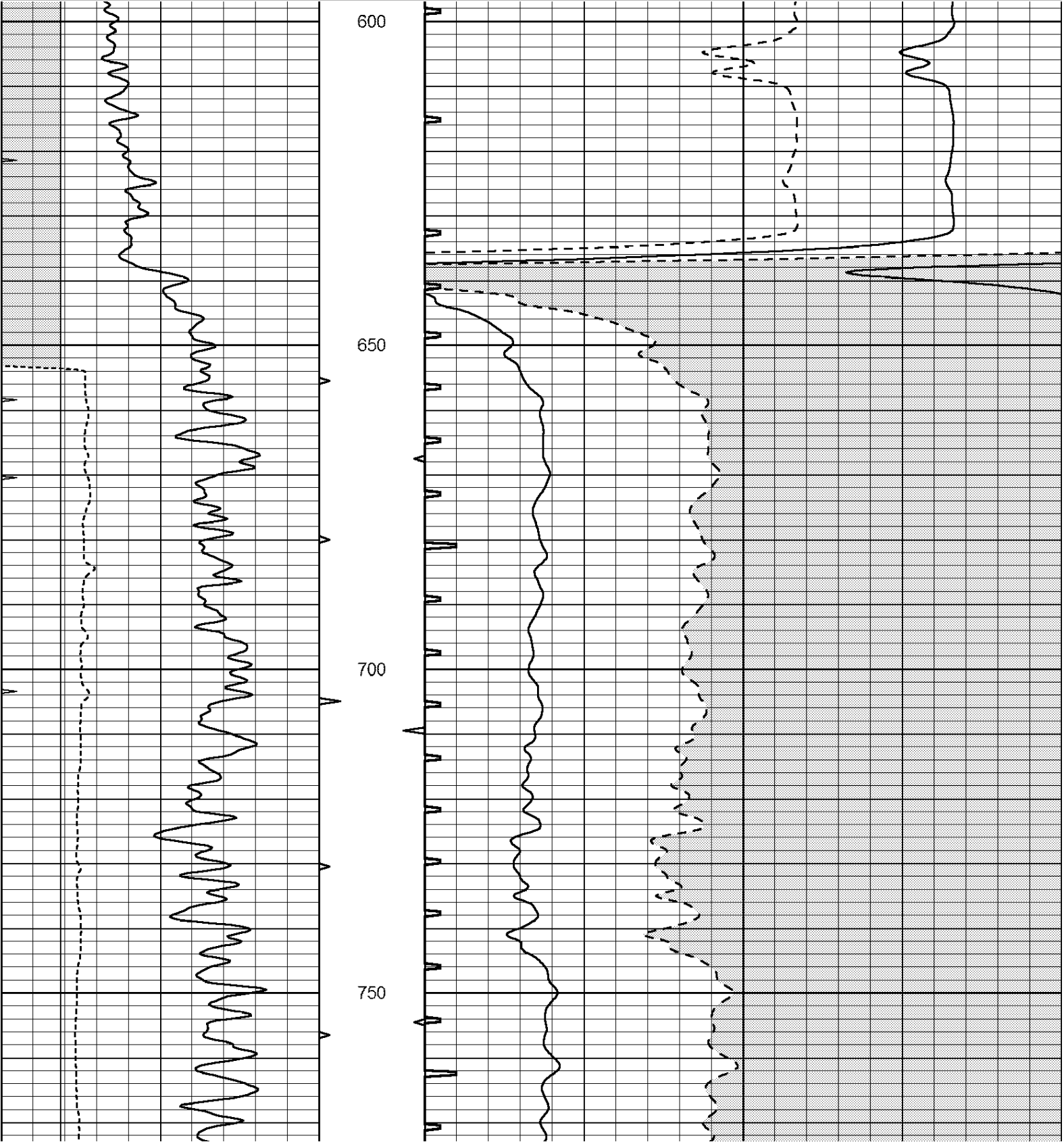
All interpretations are opinions based on inferences from electrical or other measurements and we cannot and do not guarantee the accuracy or correctness of any interpretation, and we shall not, except in the case of gross or willful negligence on our part, be liable or responsible for any loss, costs, damages, or expenses incurred or sustained by anyone resulting from any interpretation made by any of our officers, agents or employees. These interpretations are also subject to our general terms and conditions set out in our current Price Schedule.

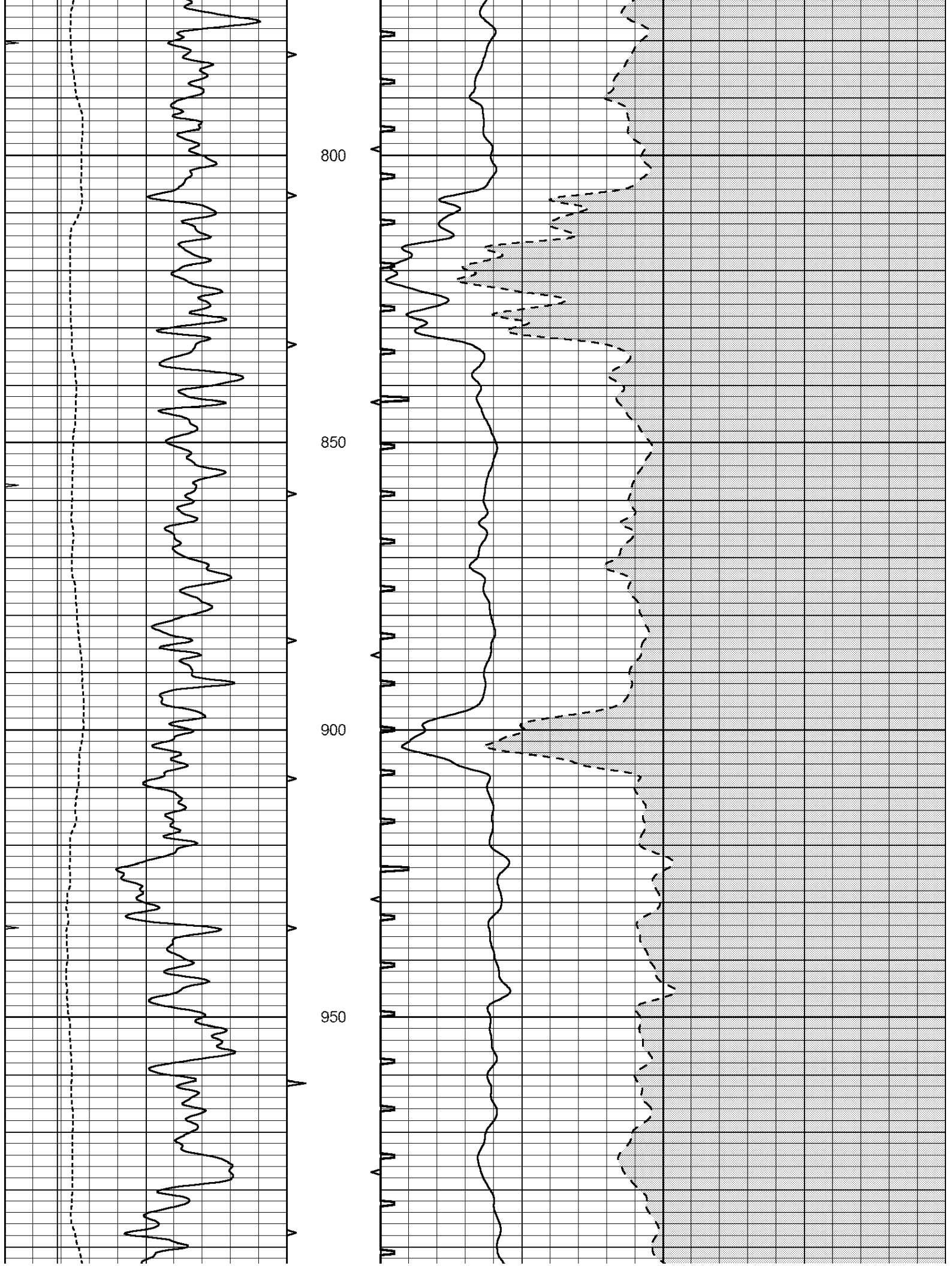
Comments

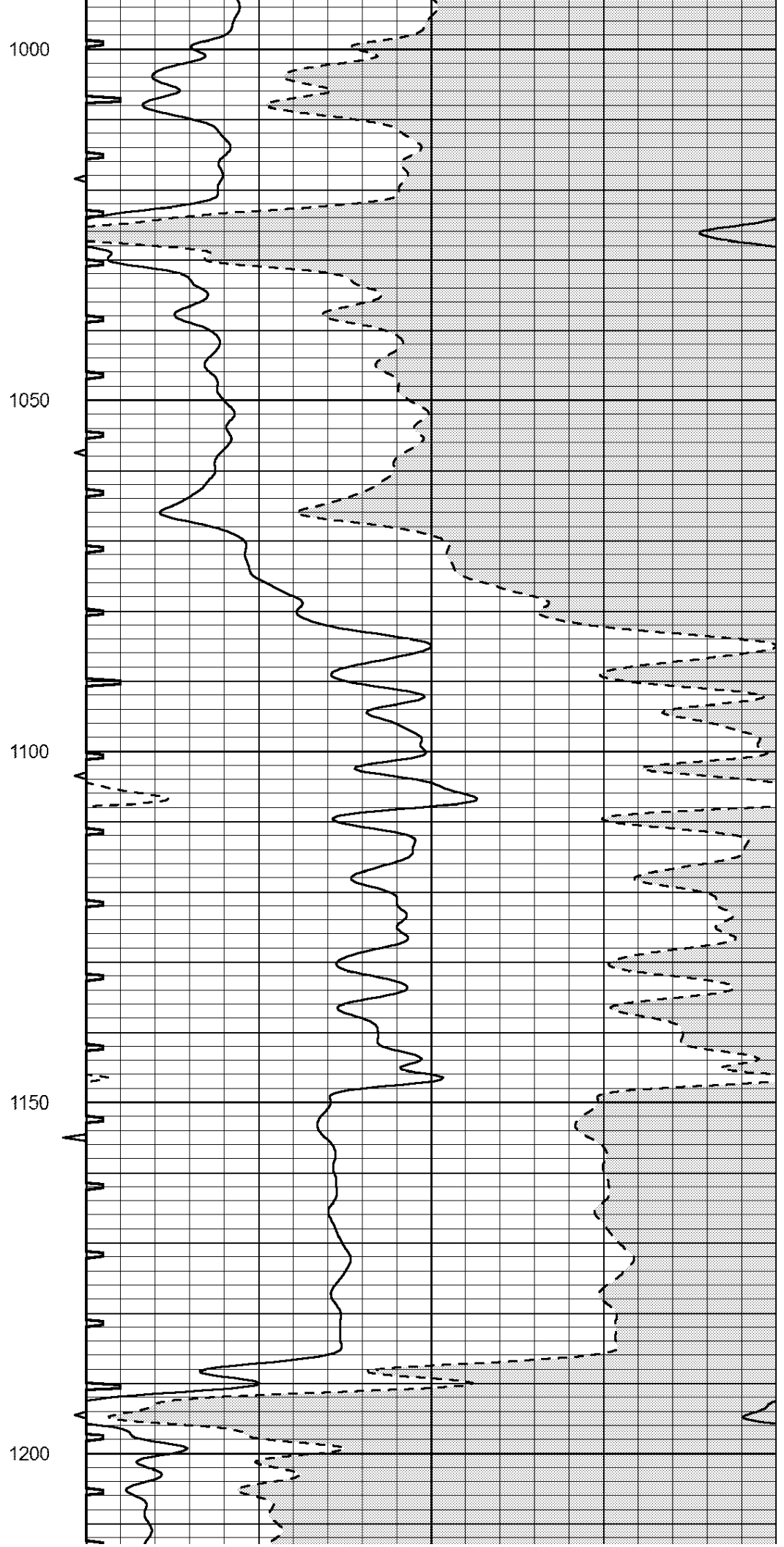
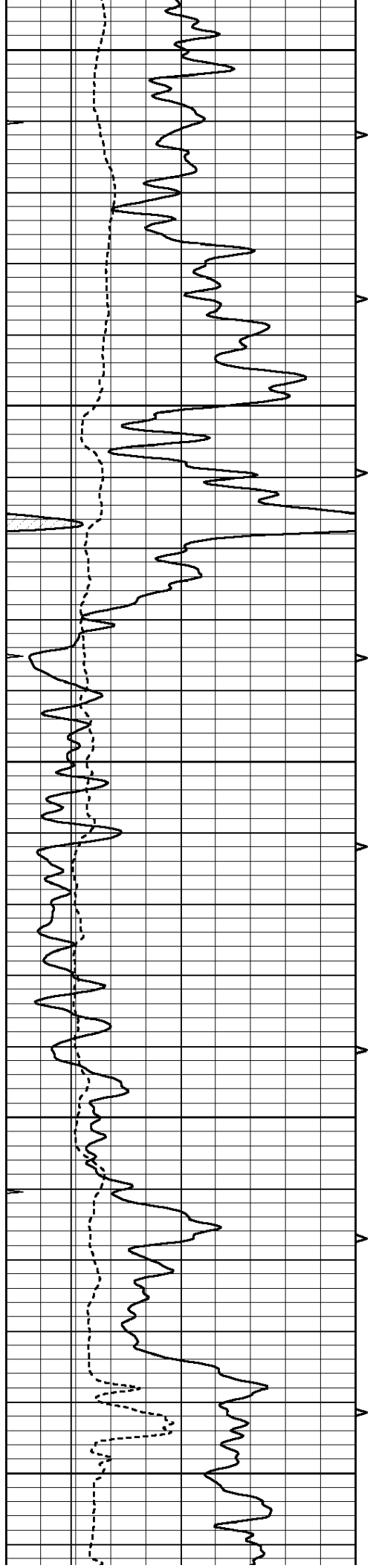
THANK YOU FOR USING NABORS, HAYS, KS. (785) 628-6395
DIRECTIONS:
CHEYENNE WELLS, CO. - 9 SOUTH TO RD G - 6 WEST - 3 SOUTH - 1 MILE EAST INTO

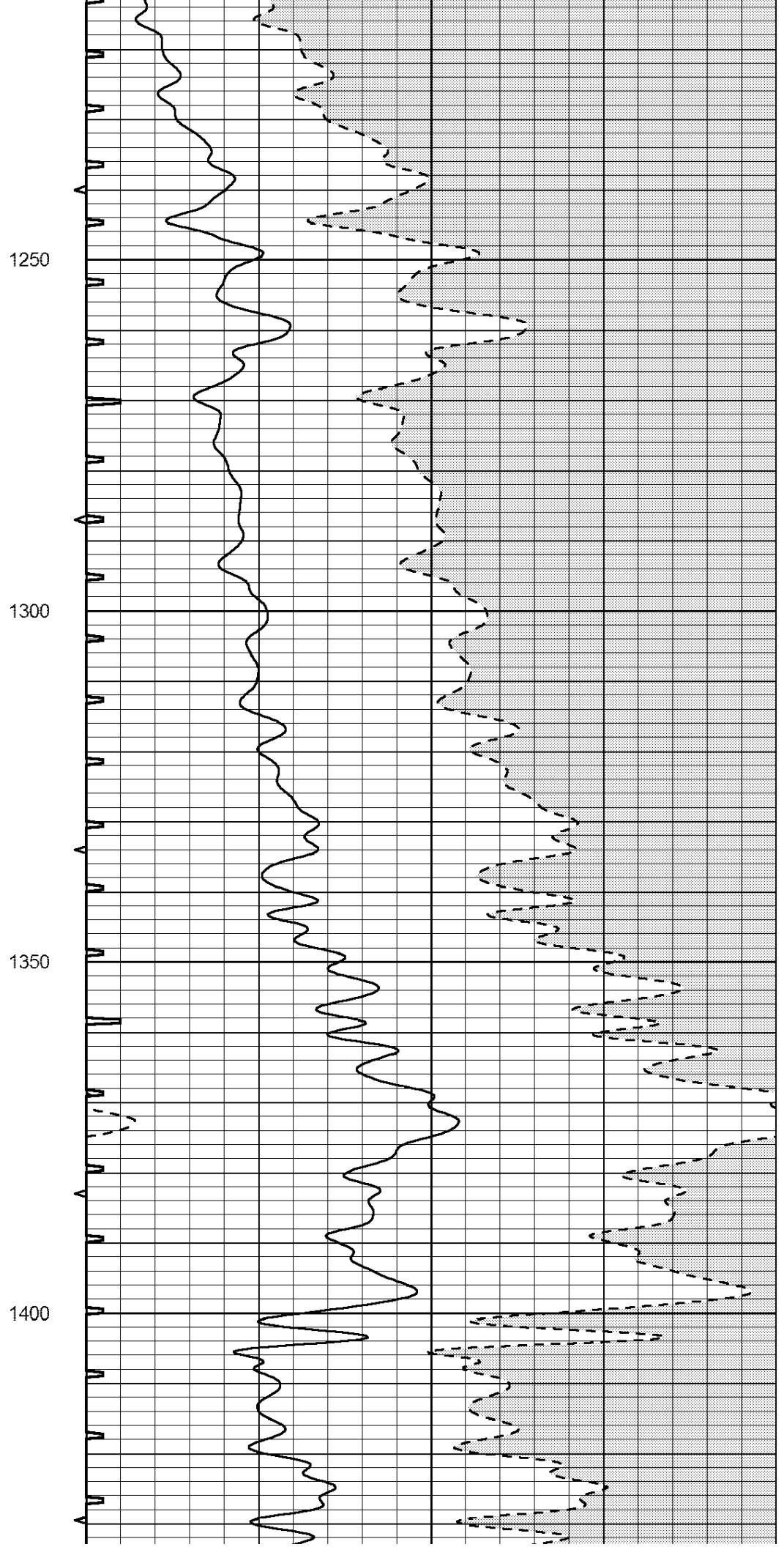
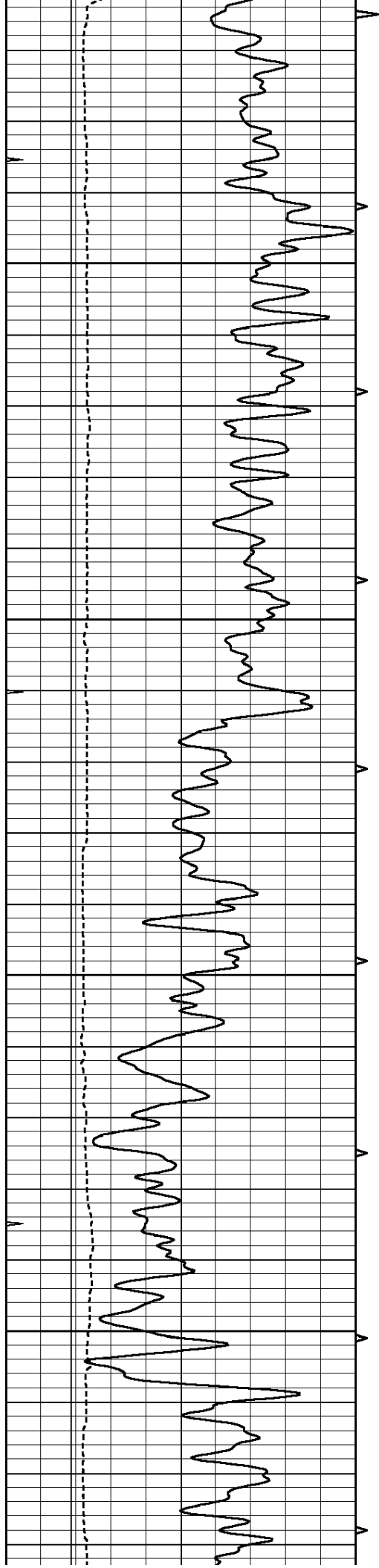
Database File: 22117pe.db
Dataset Pathname: pass7.2
Presentation Format: _slt
Dataset Creation: Sun Jan 05 17:22:22 2014 by Calc Open-Cased 090629
Charted by: Depth in Feet scaled 1:240

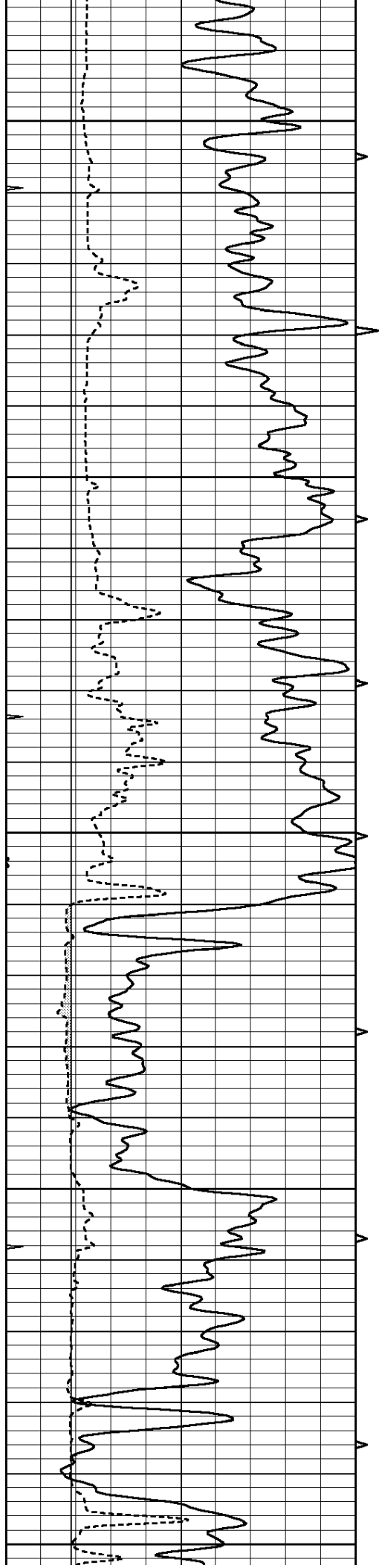
0	GAMMA RAY (GAPI)	150	ABHV	140	DELTA TIME (usec/ft)	40
6	CALIPER (in)	16	10 (ft3) 0	30	SONIC POROSITY (pu)	-10
0	MINMK	20	TBHV	0	ITT (msec)	20
			0 (ft3) 10			











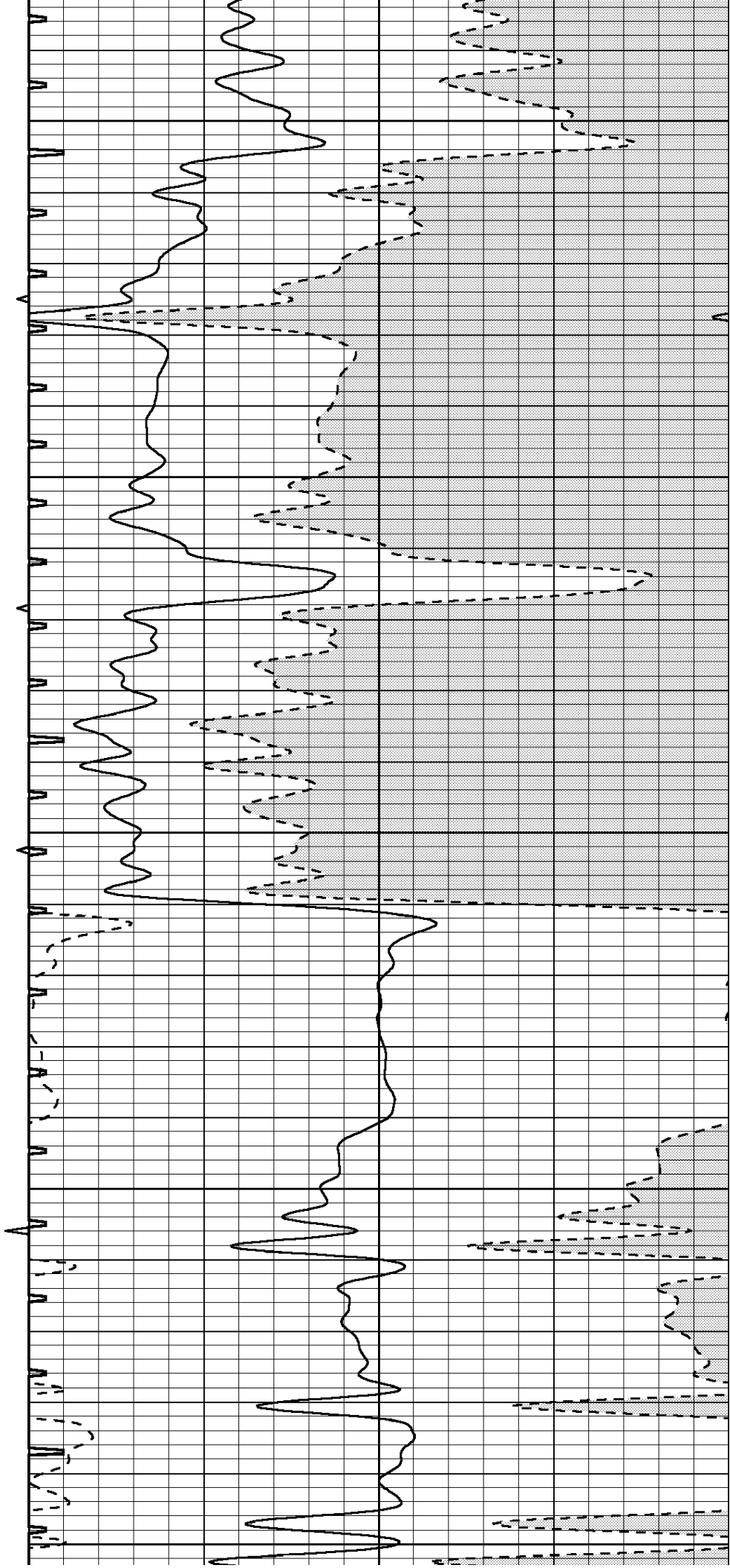
1450

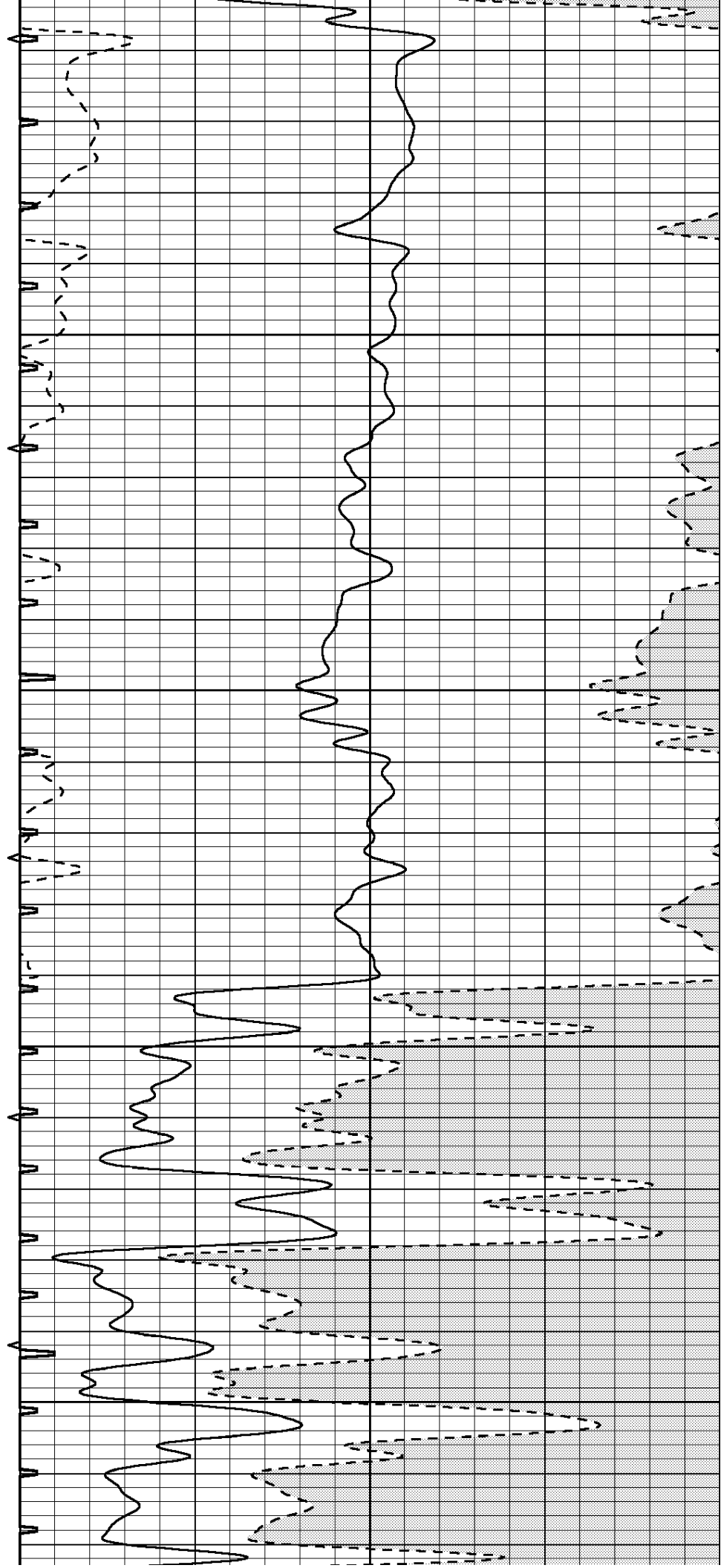
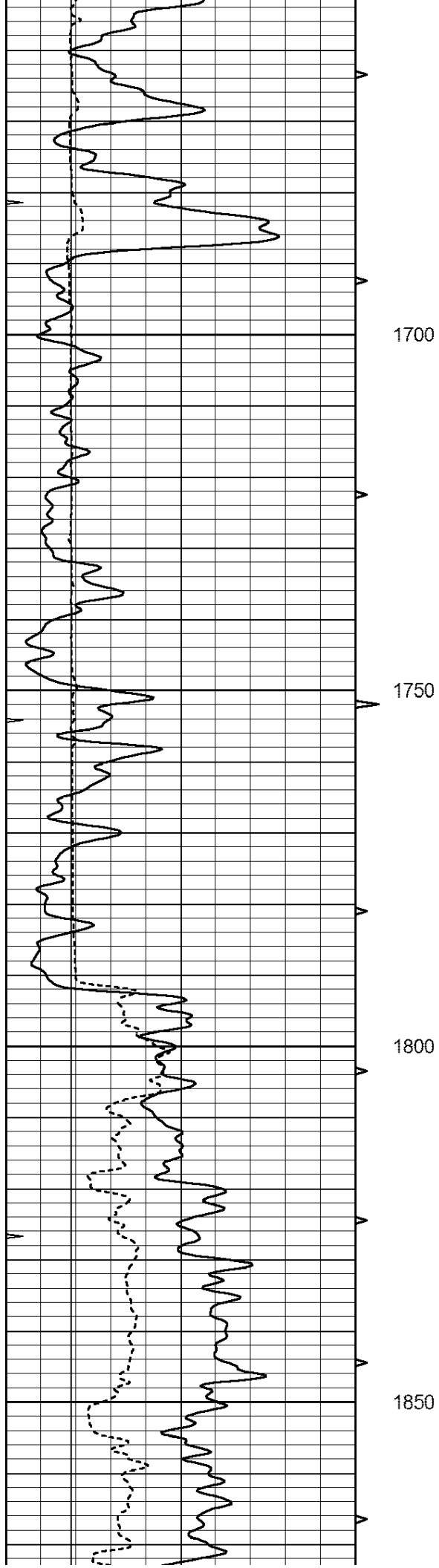
1500

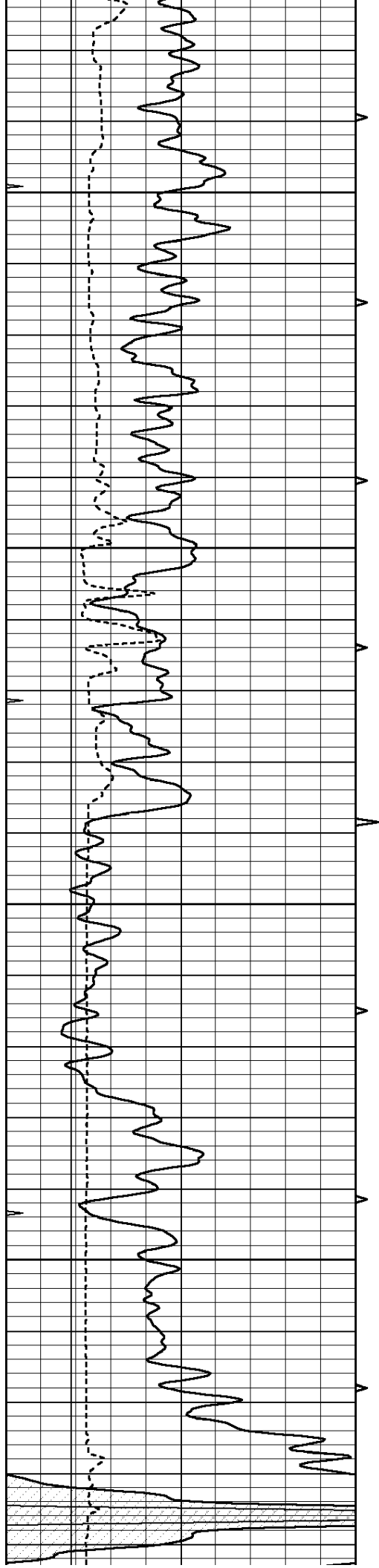
1550

1600

1650





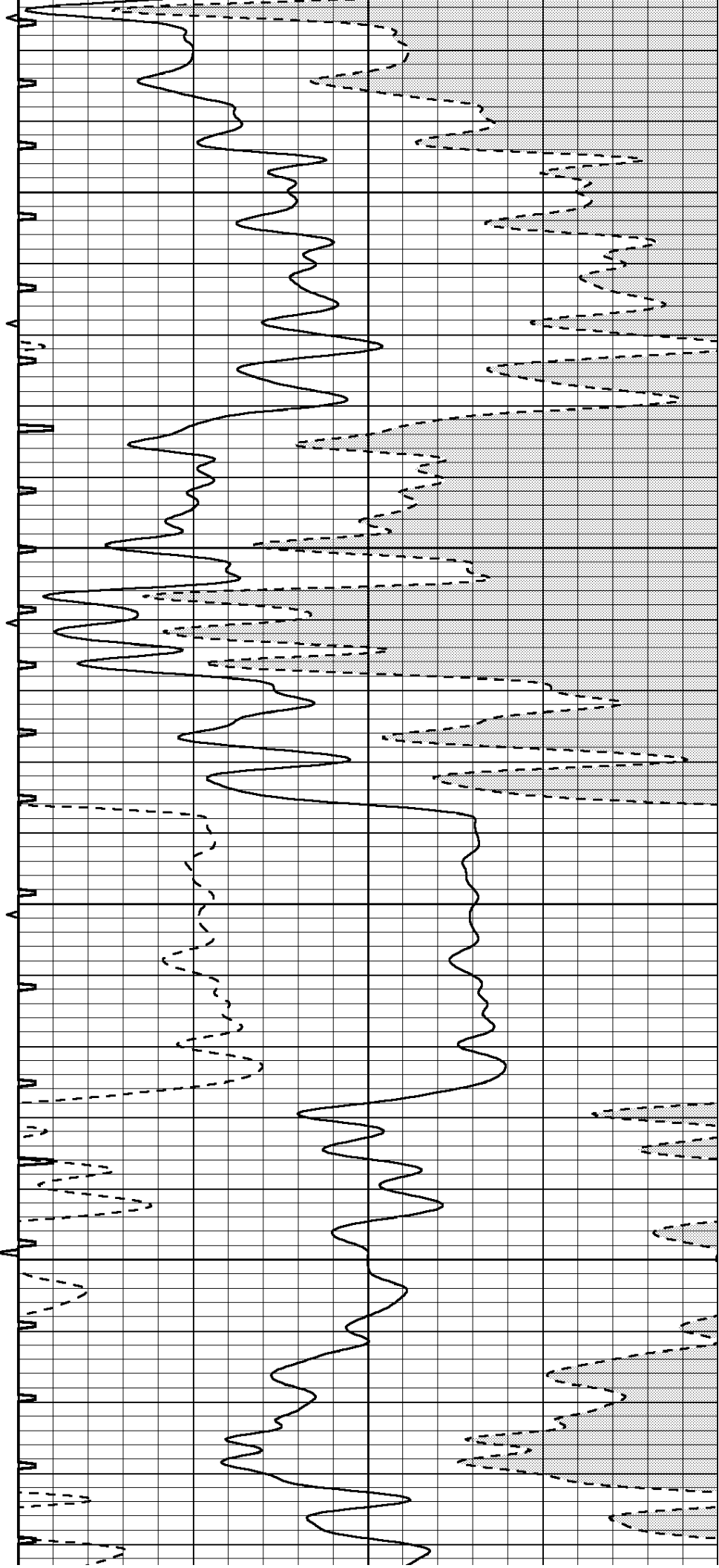


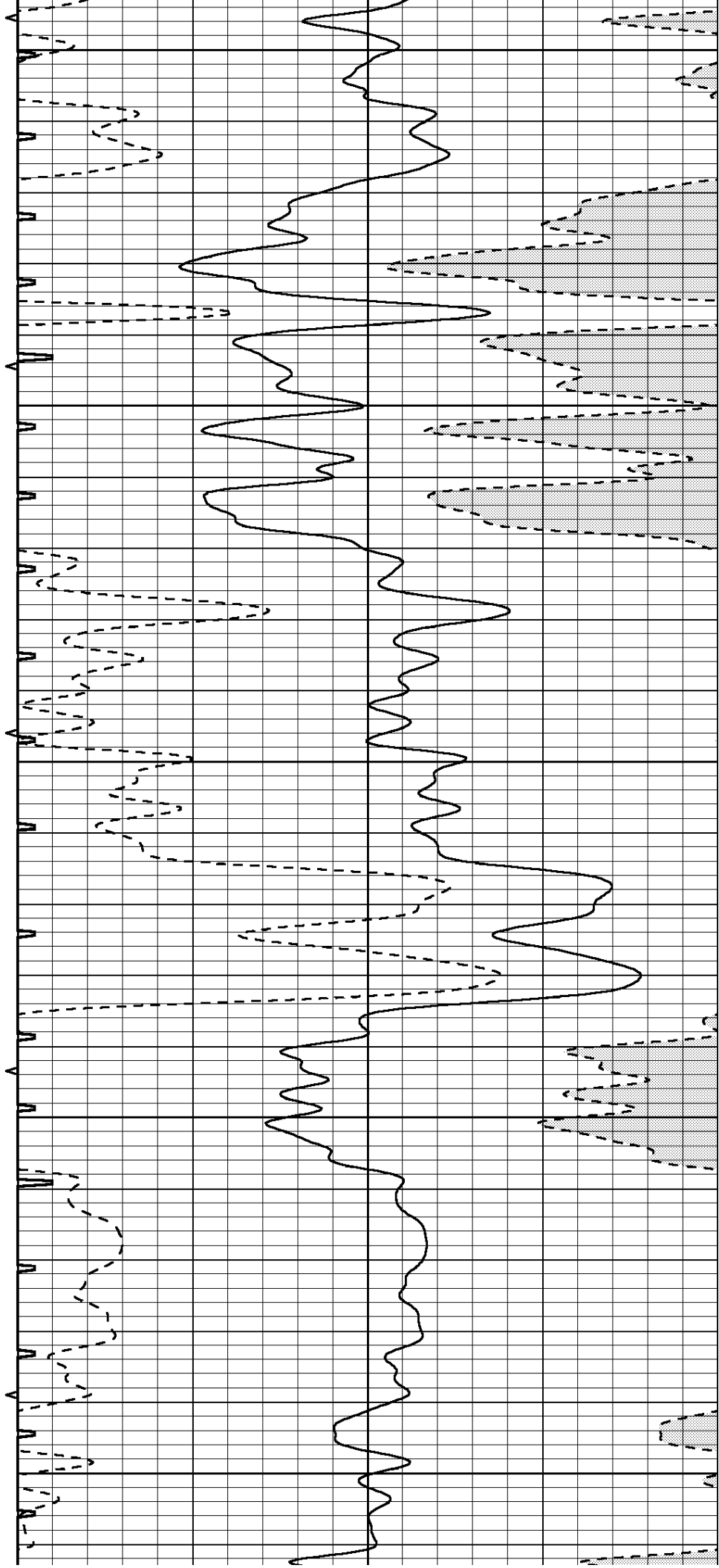
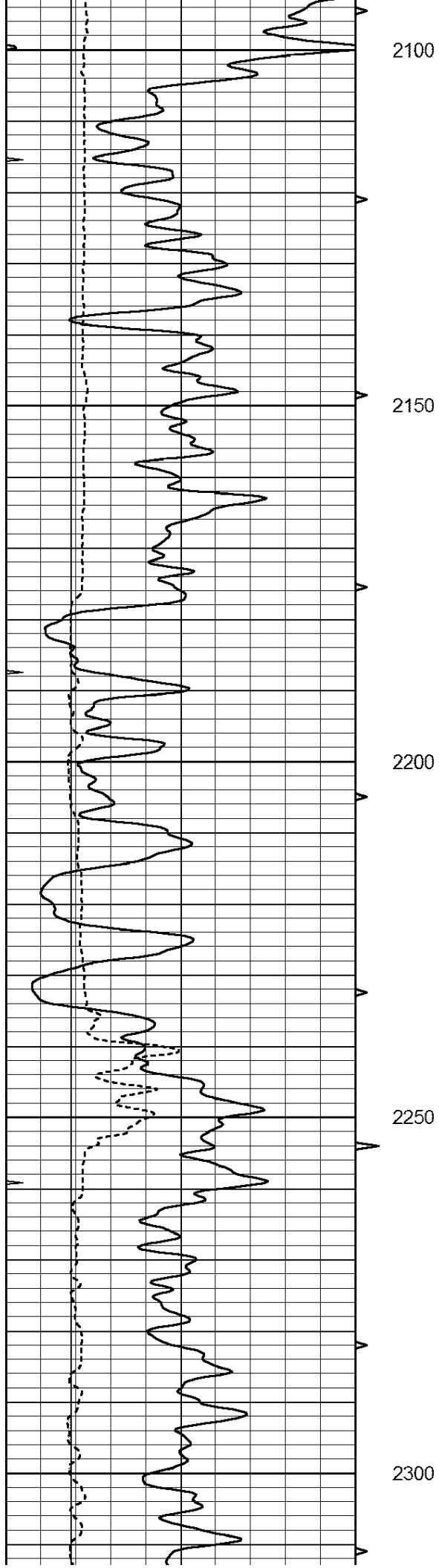
1900

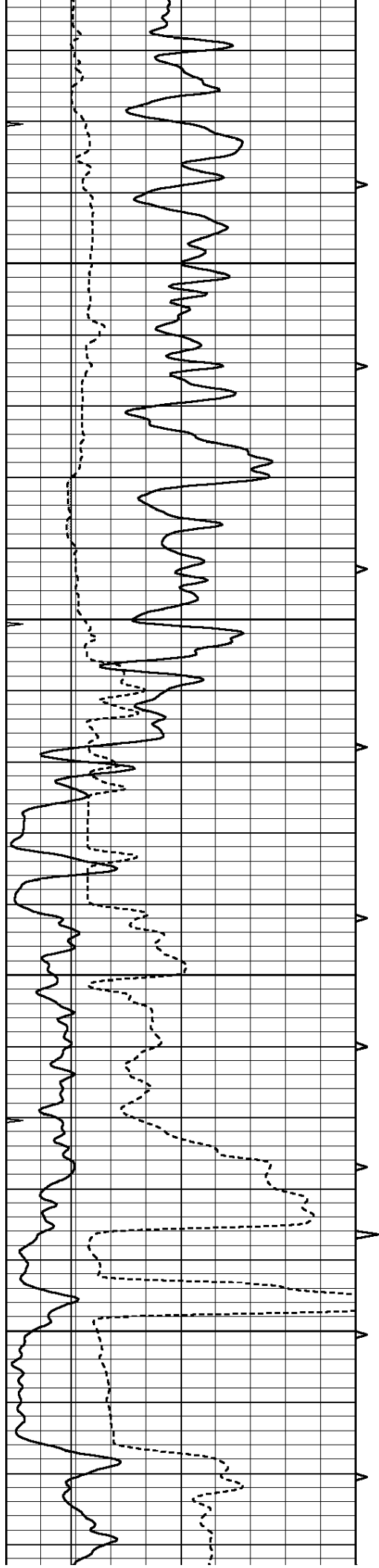
1950

2000

2050





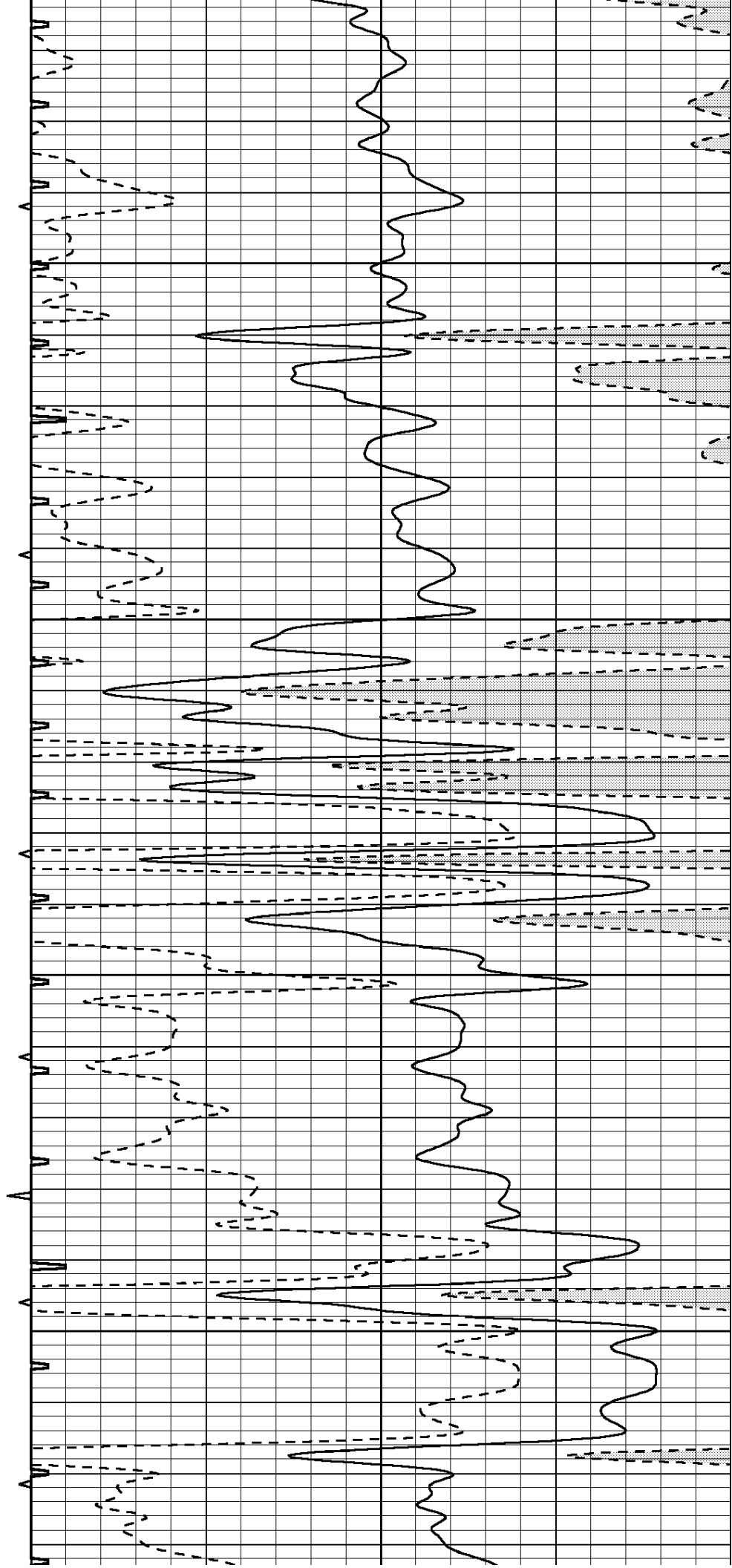


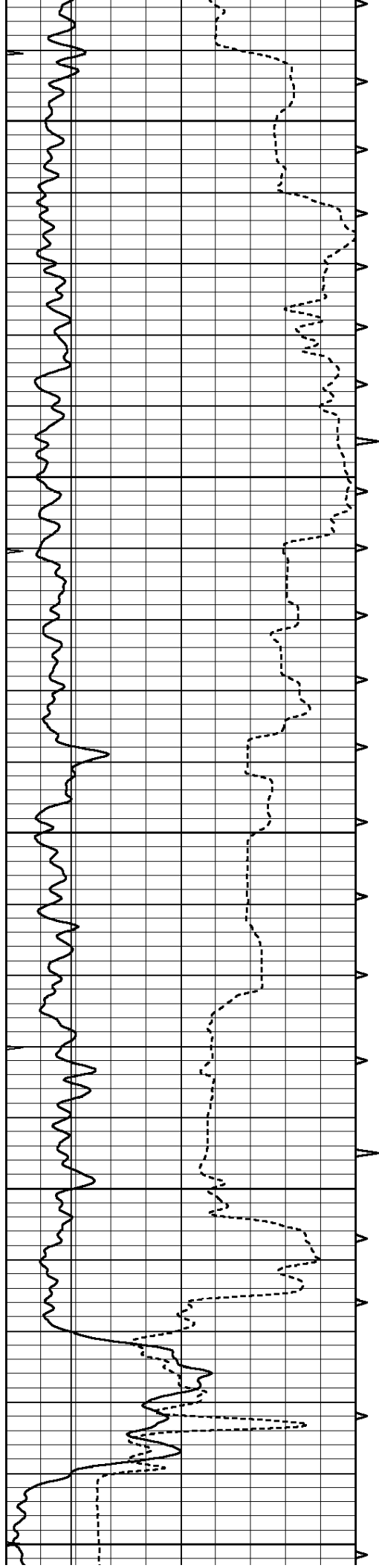
2350

2400

2450

2500





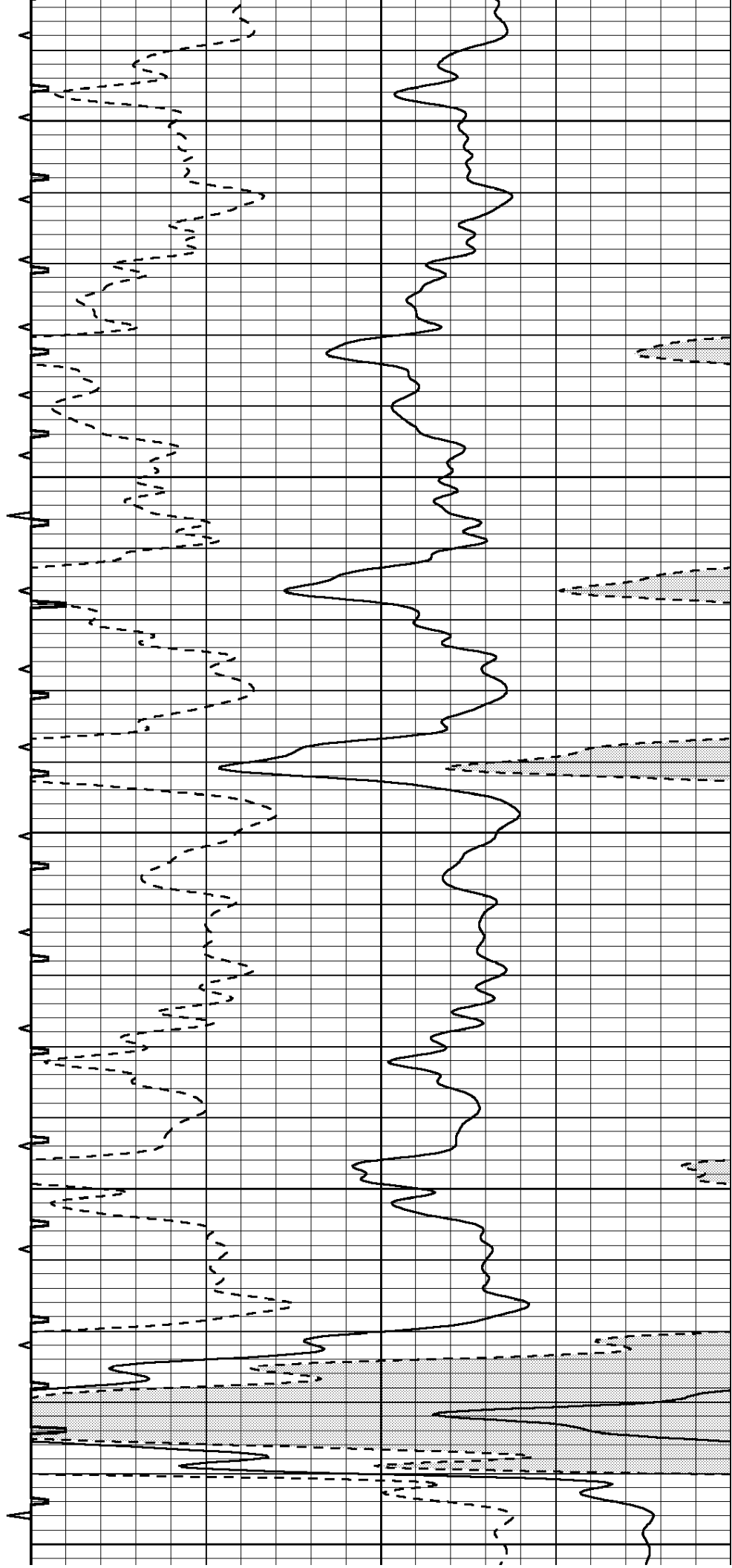
2550

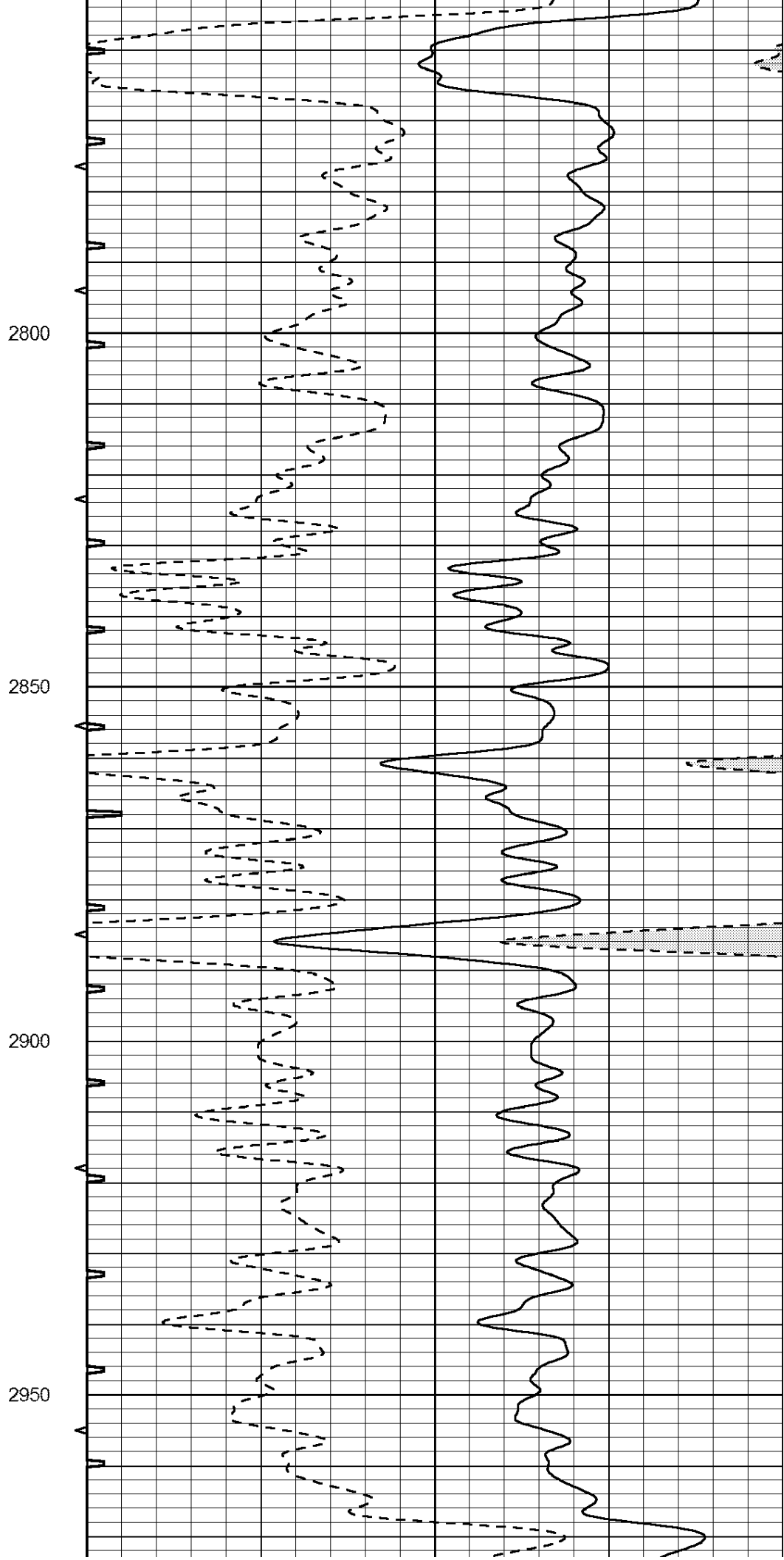
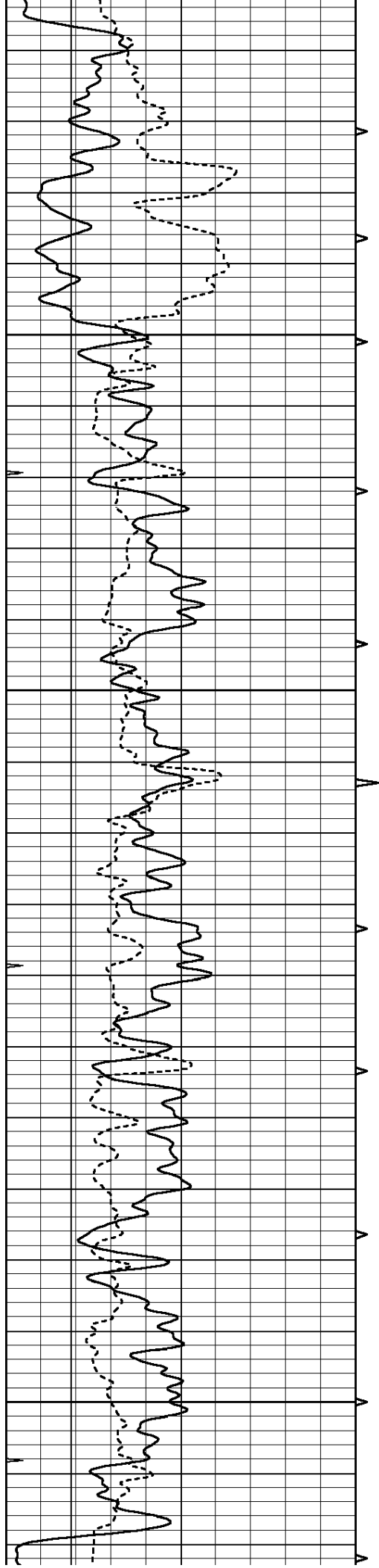
2600

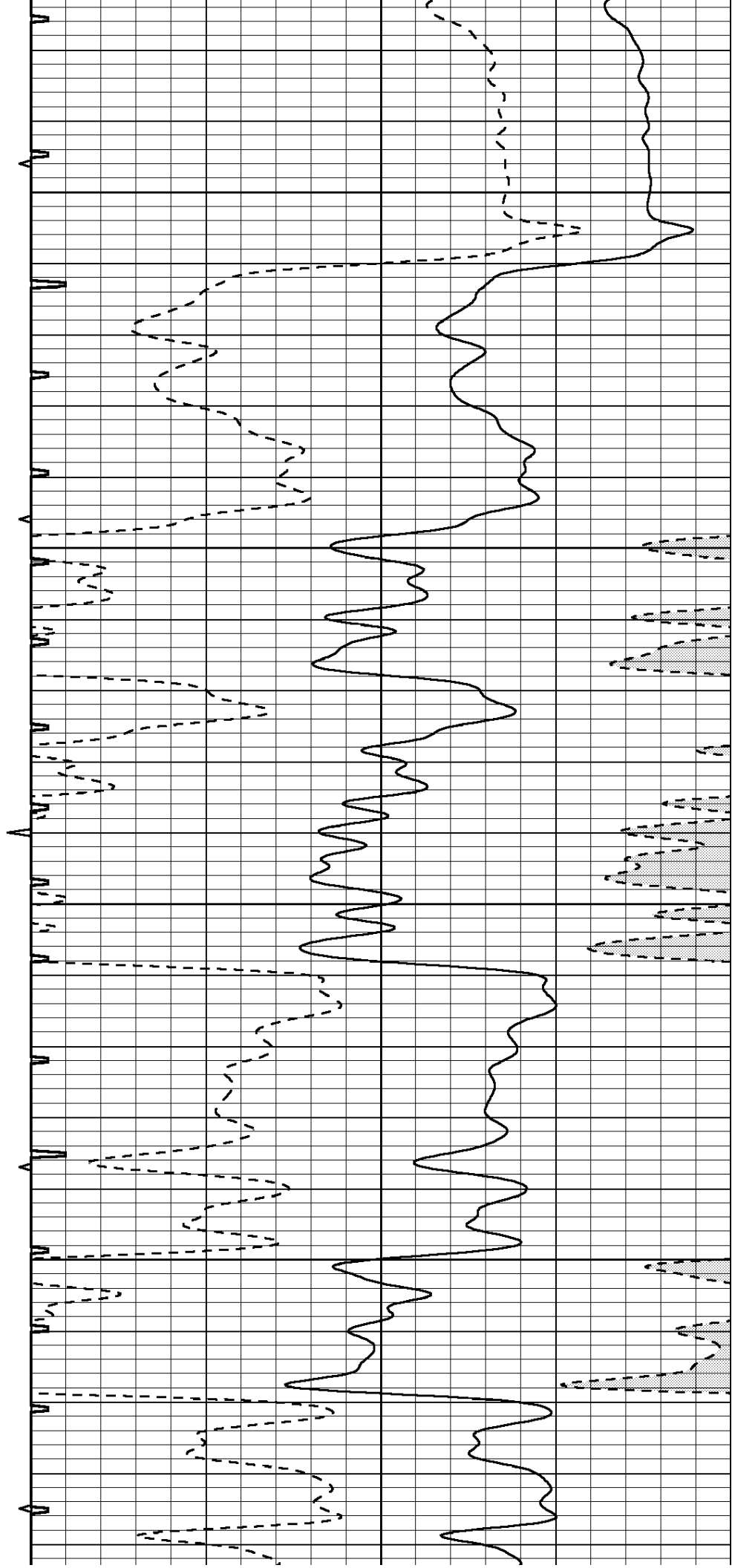
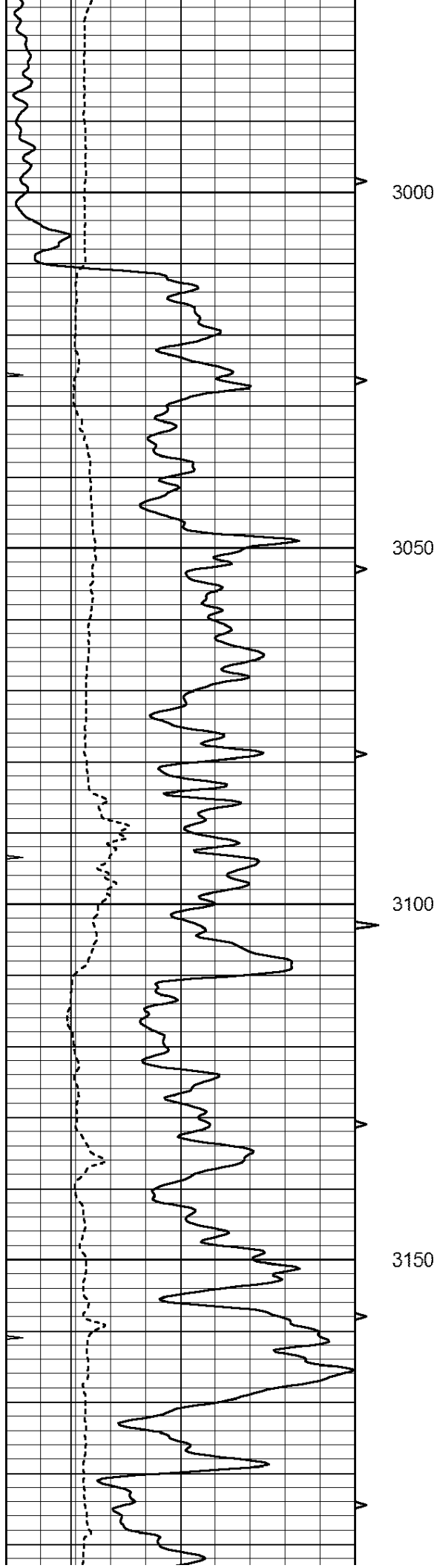
2650

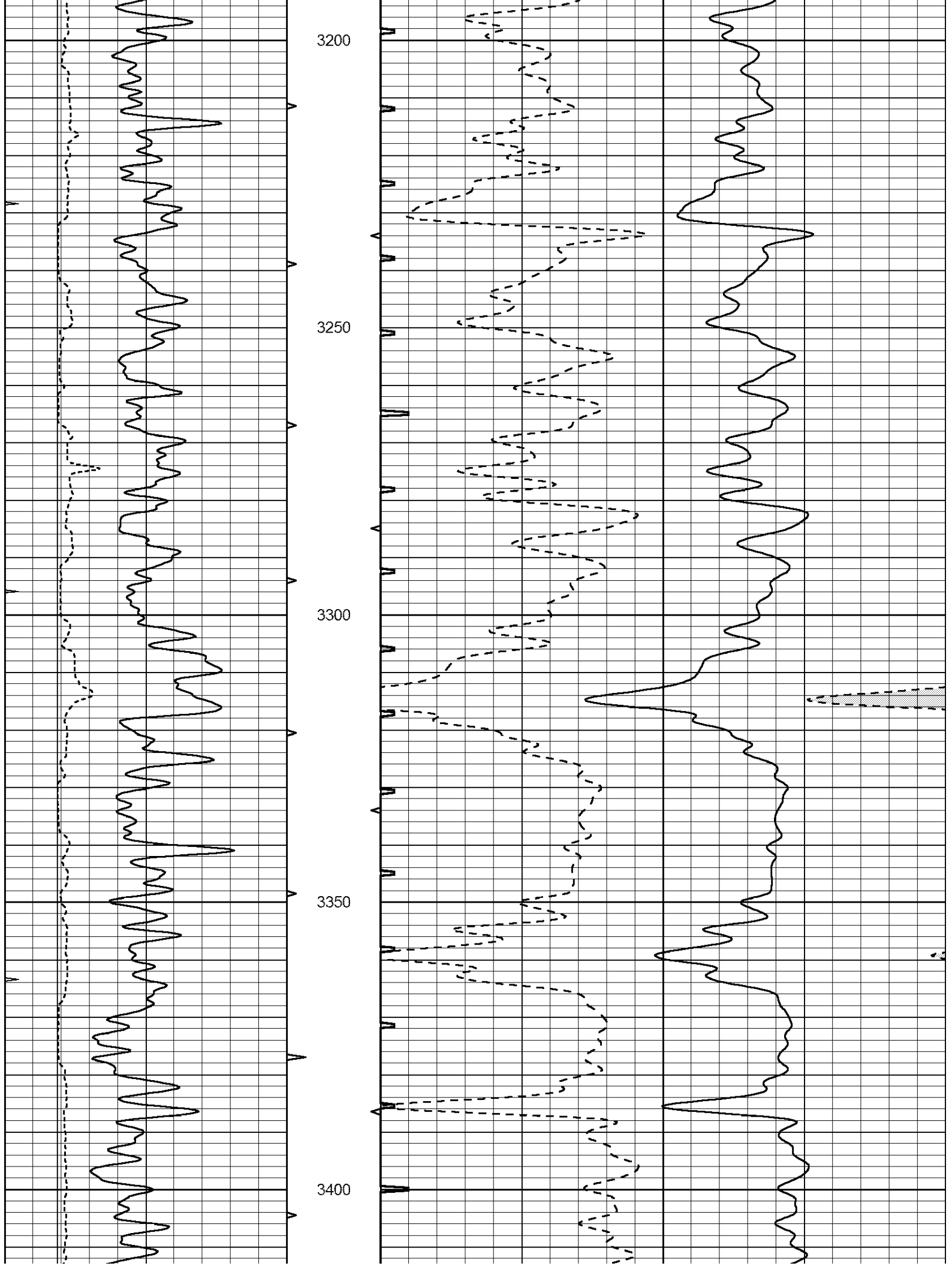
2700

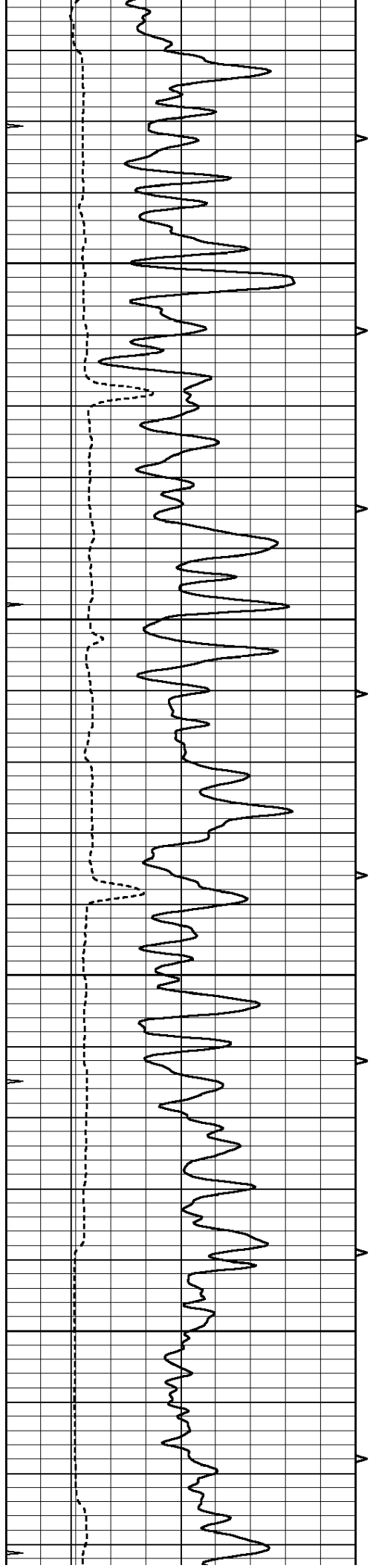
2750









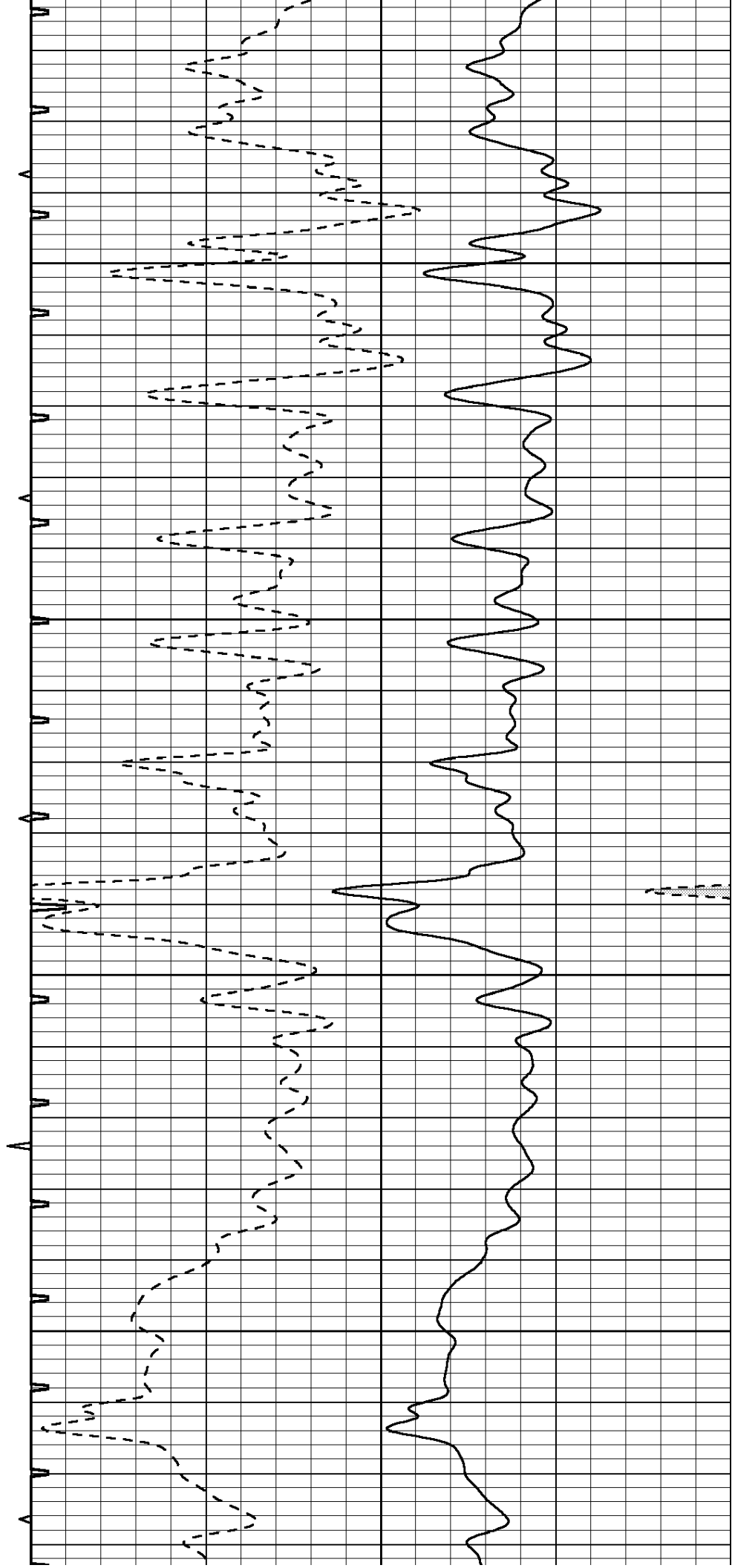


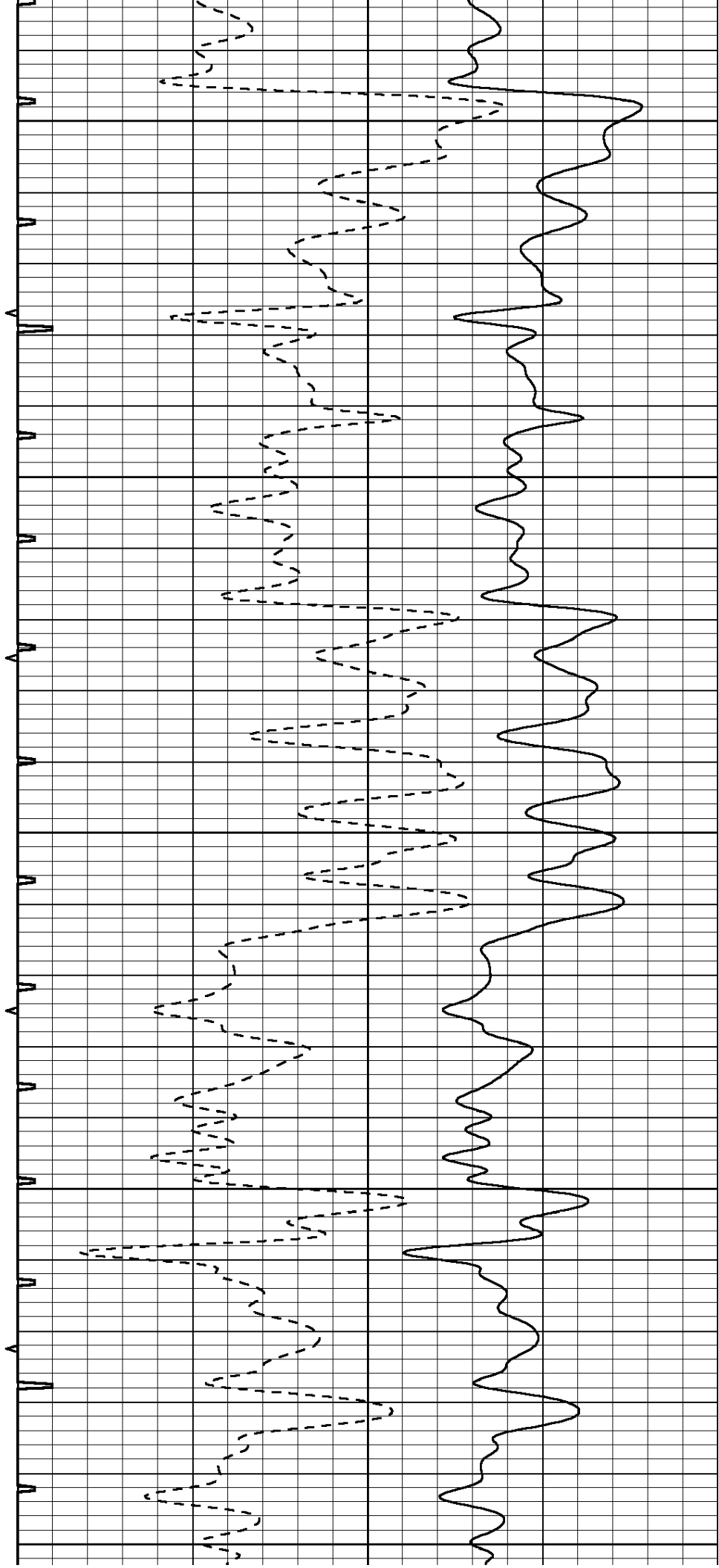
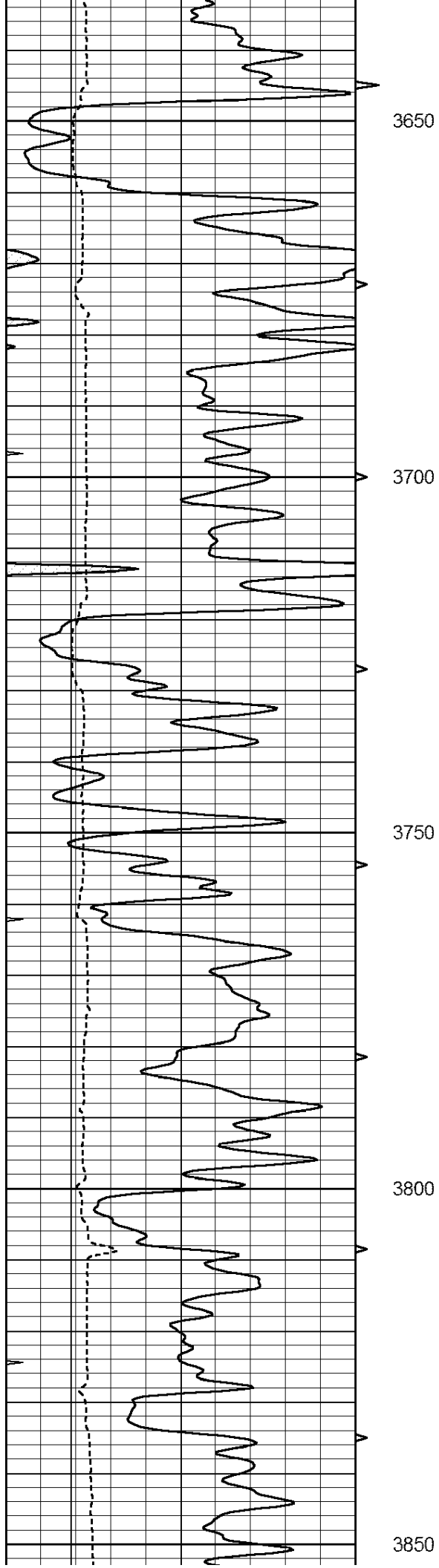
3450

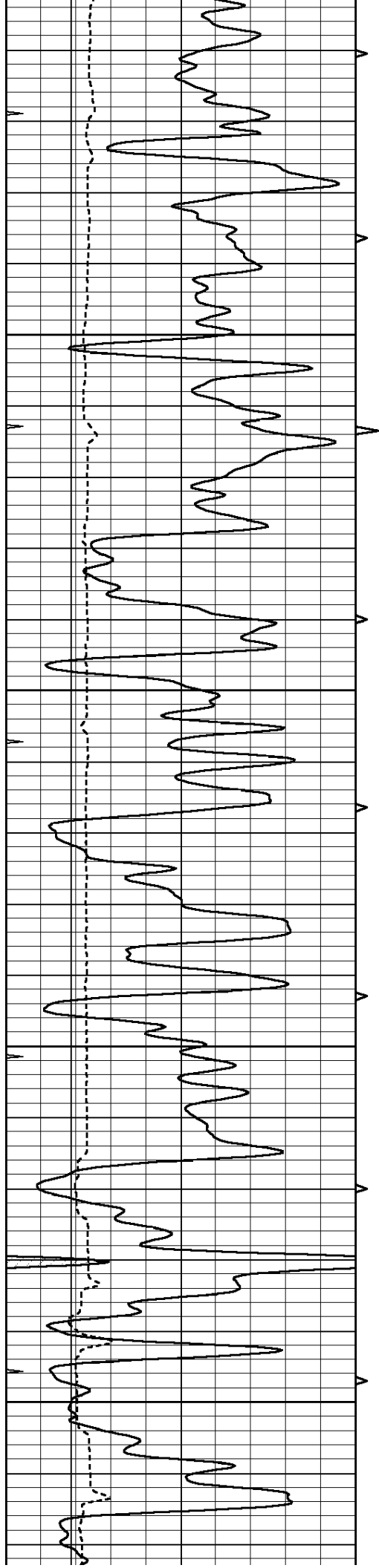
3500

3550

3600





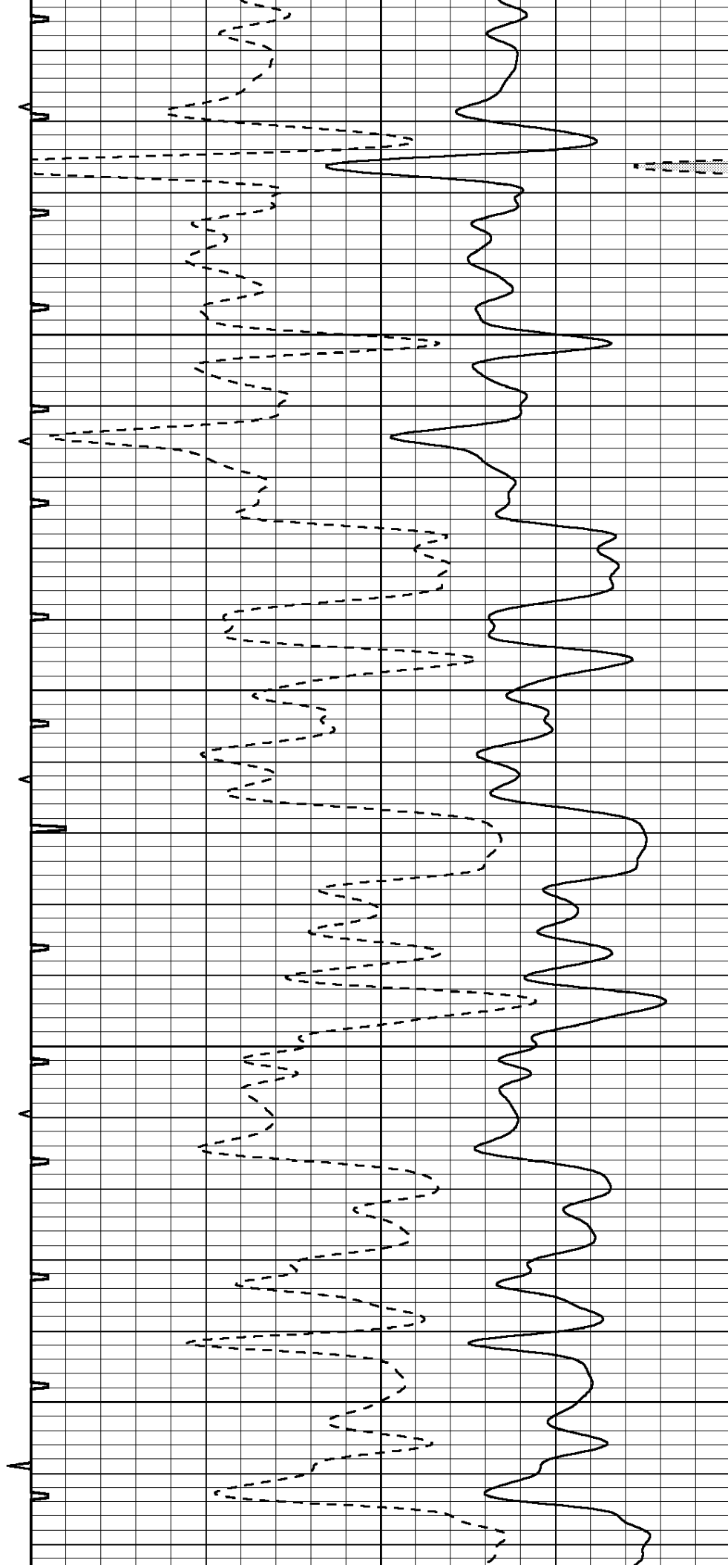


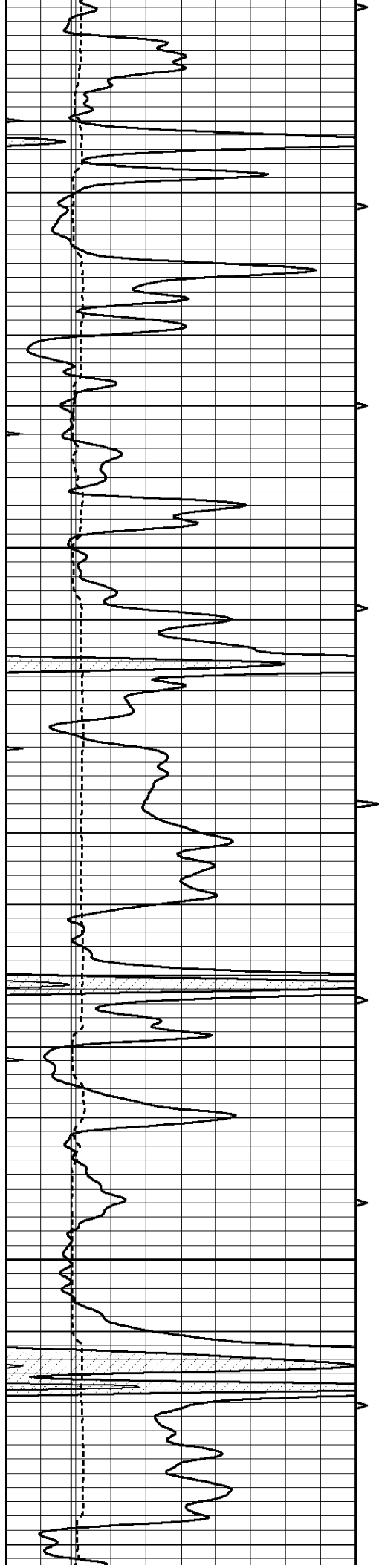
3900

3950

4000

4050



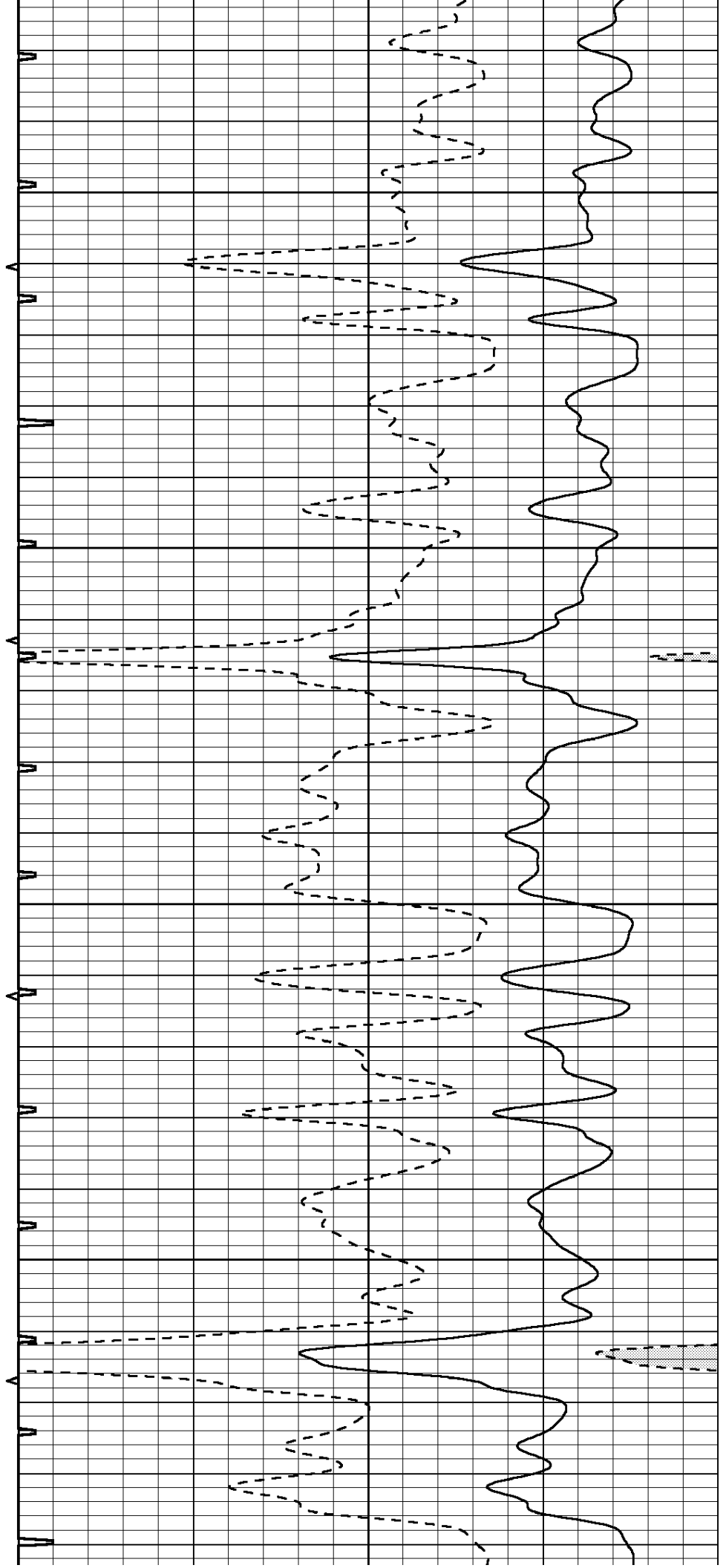


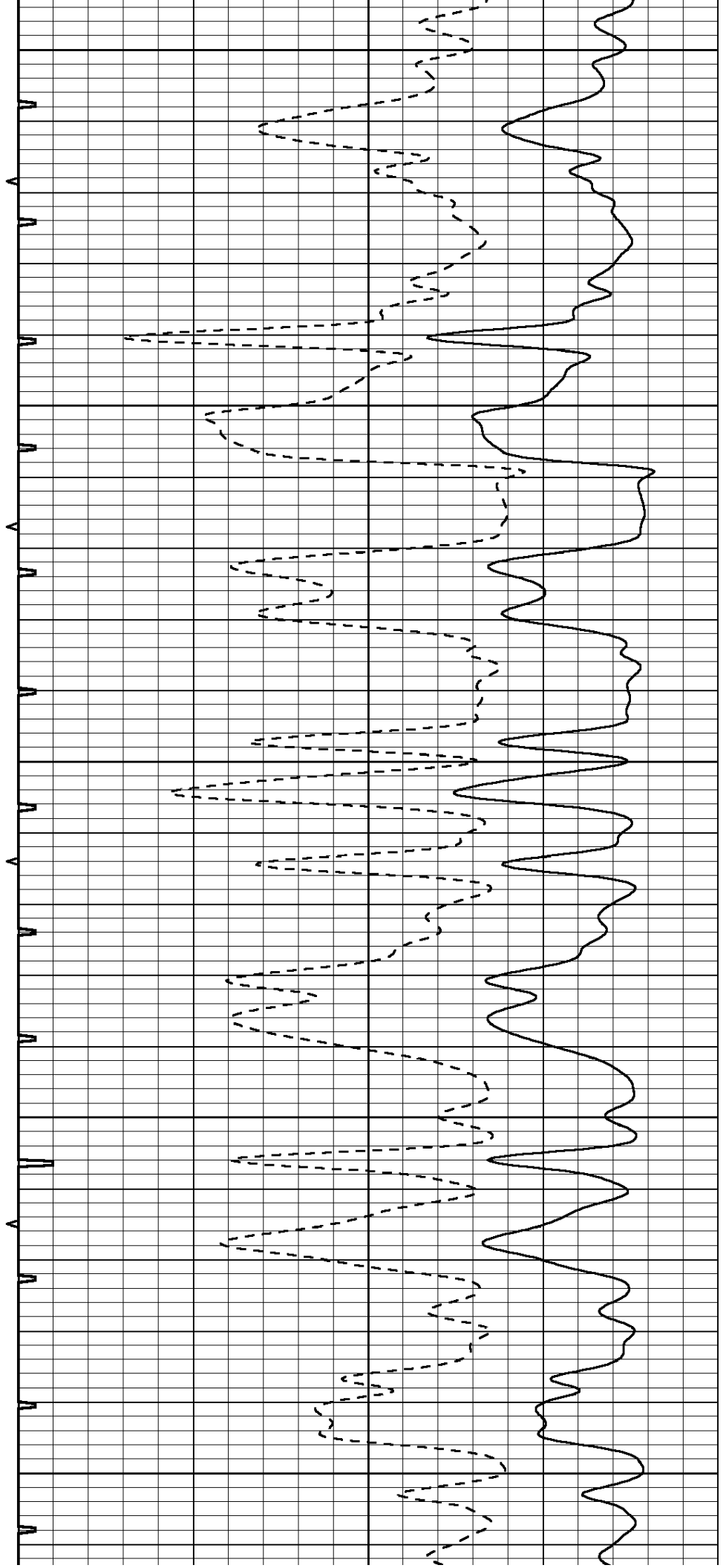
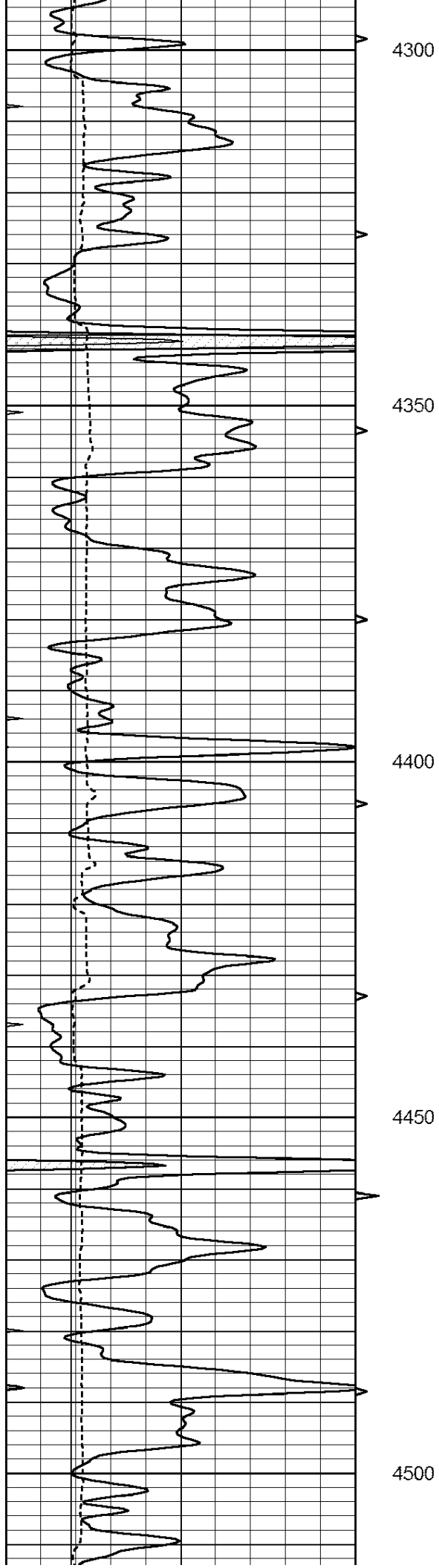
4100

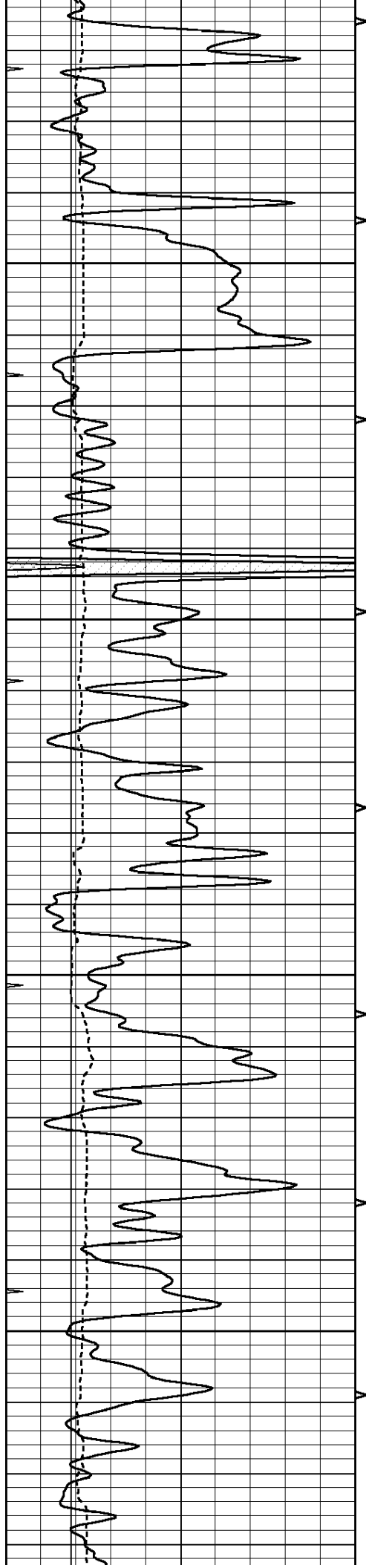
4150

4200

4250





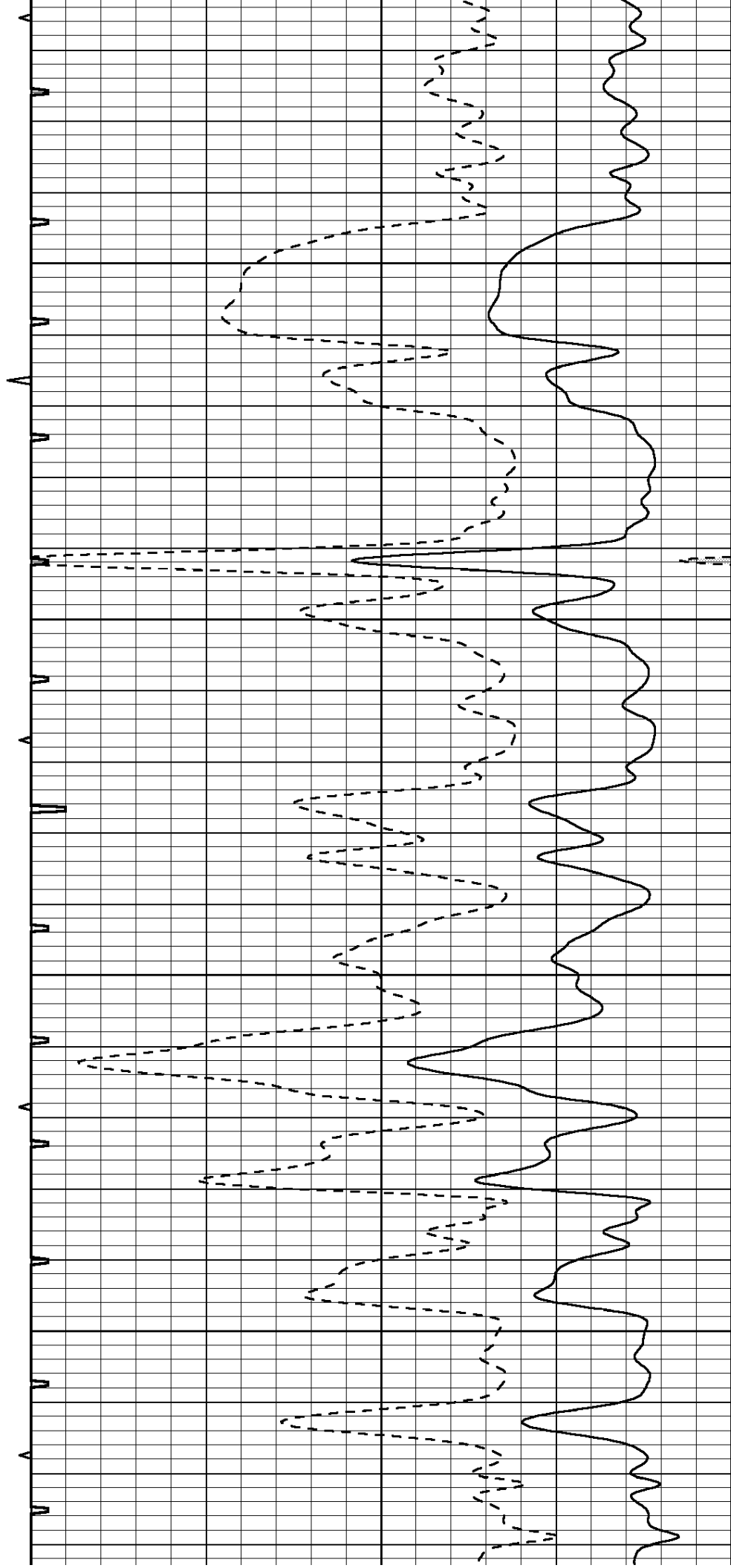


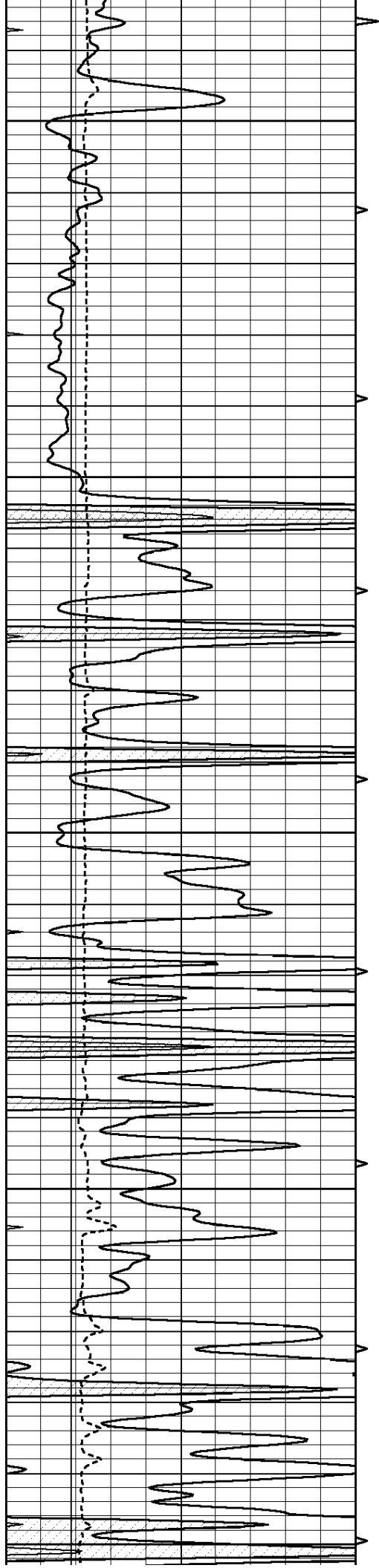
4550

4600

4650

4700





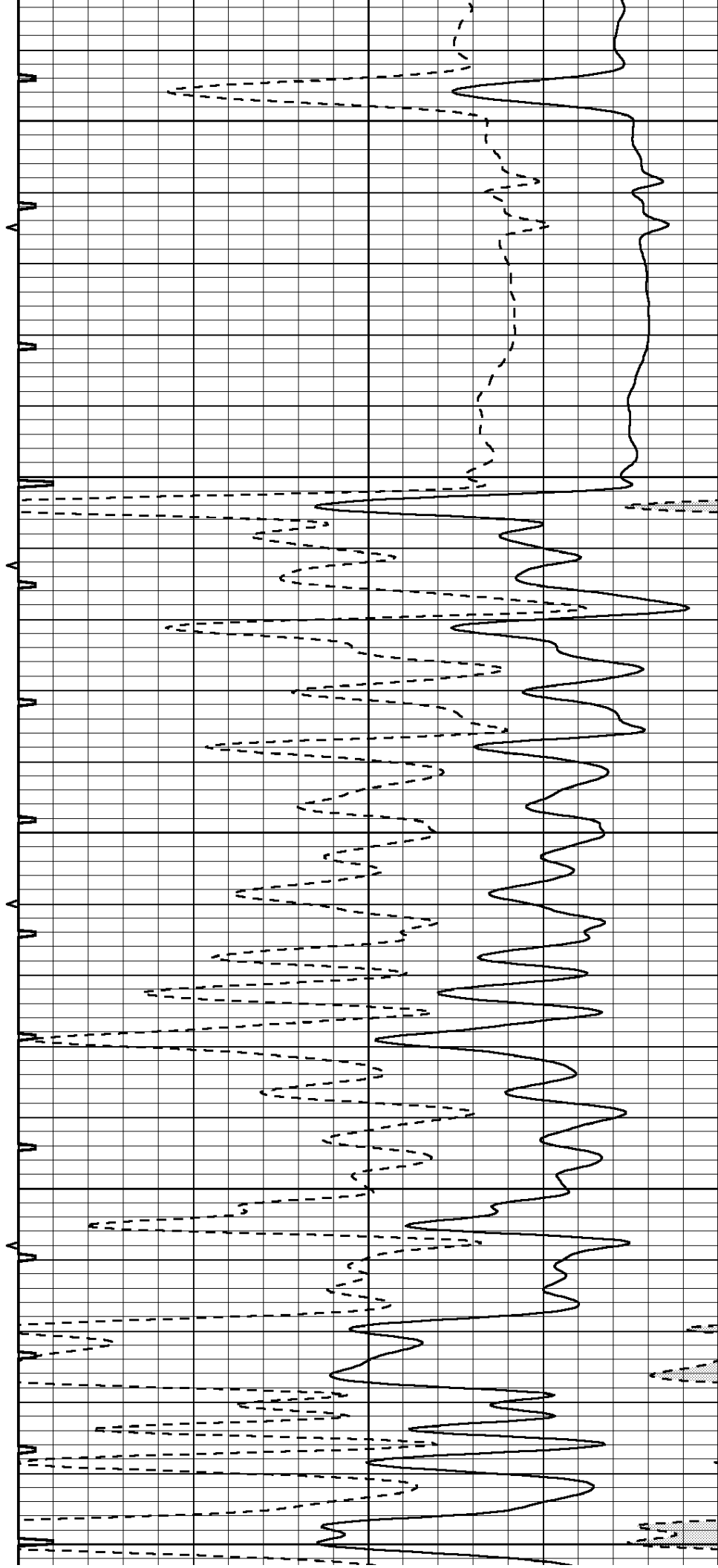
4750

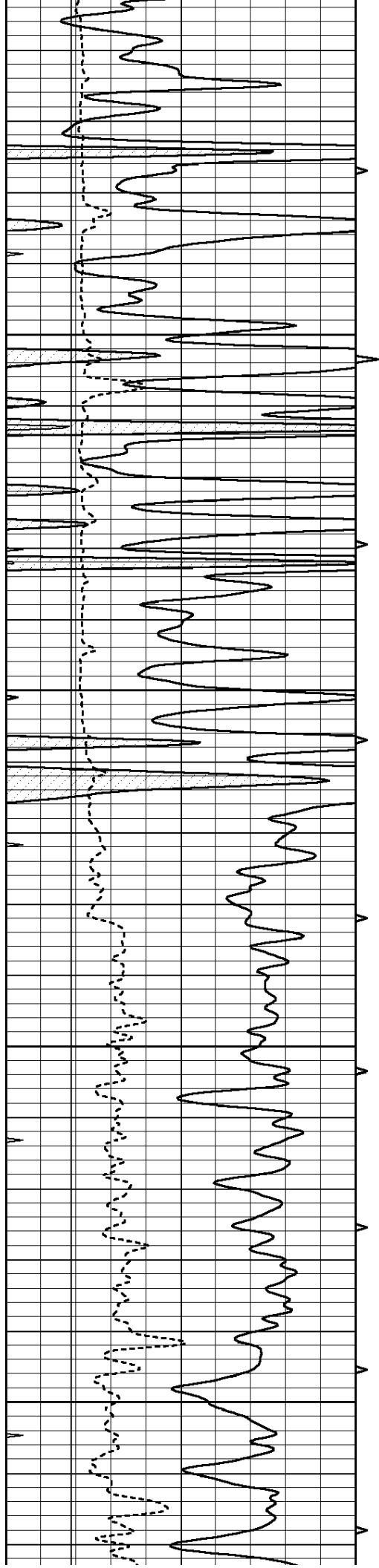
4800

4850

4900

4950



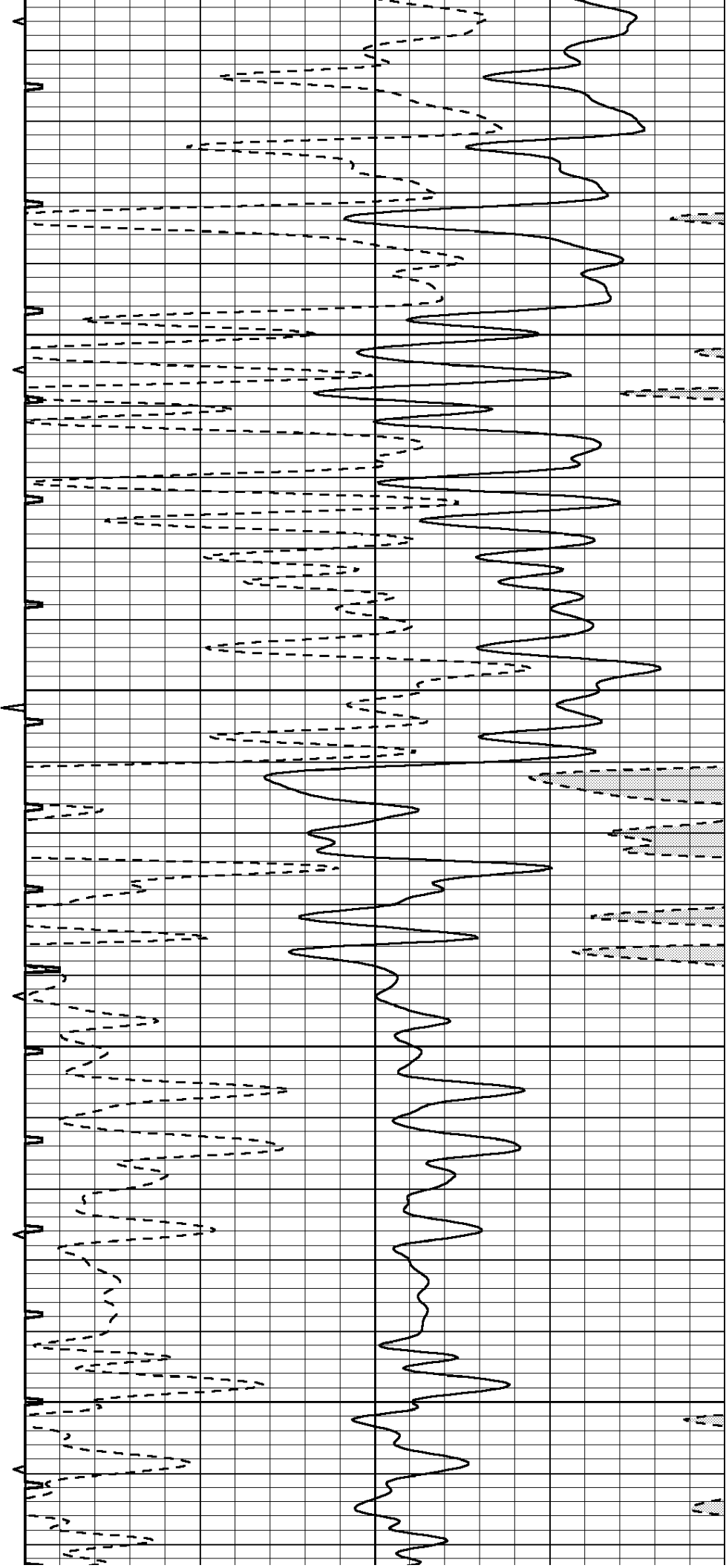


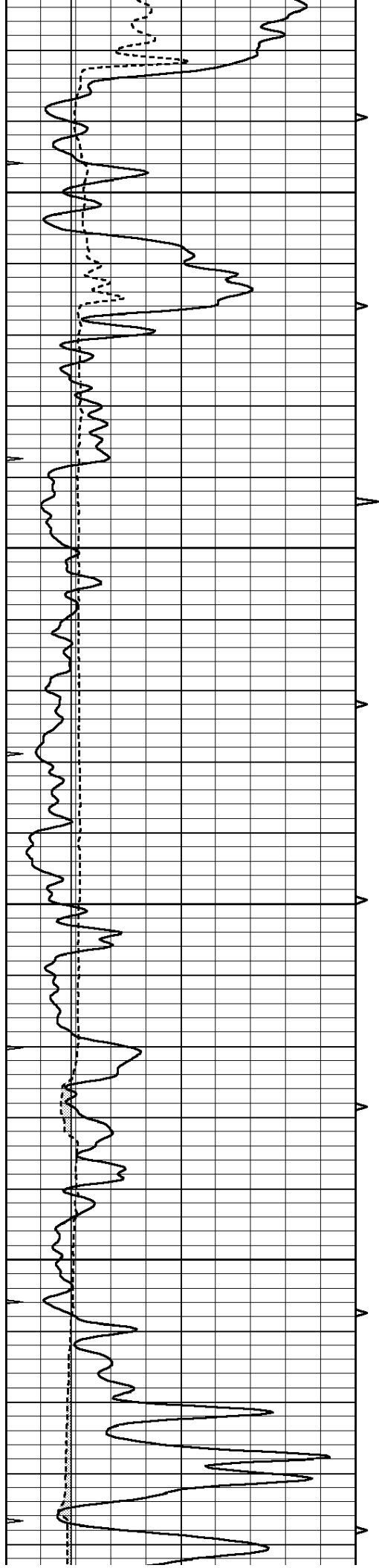
5000

5050

5100

5150



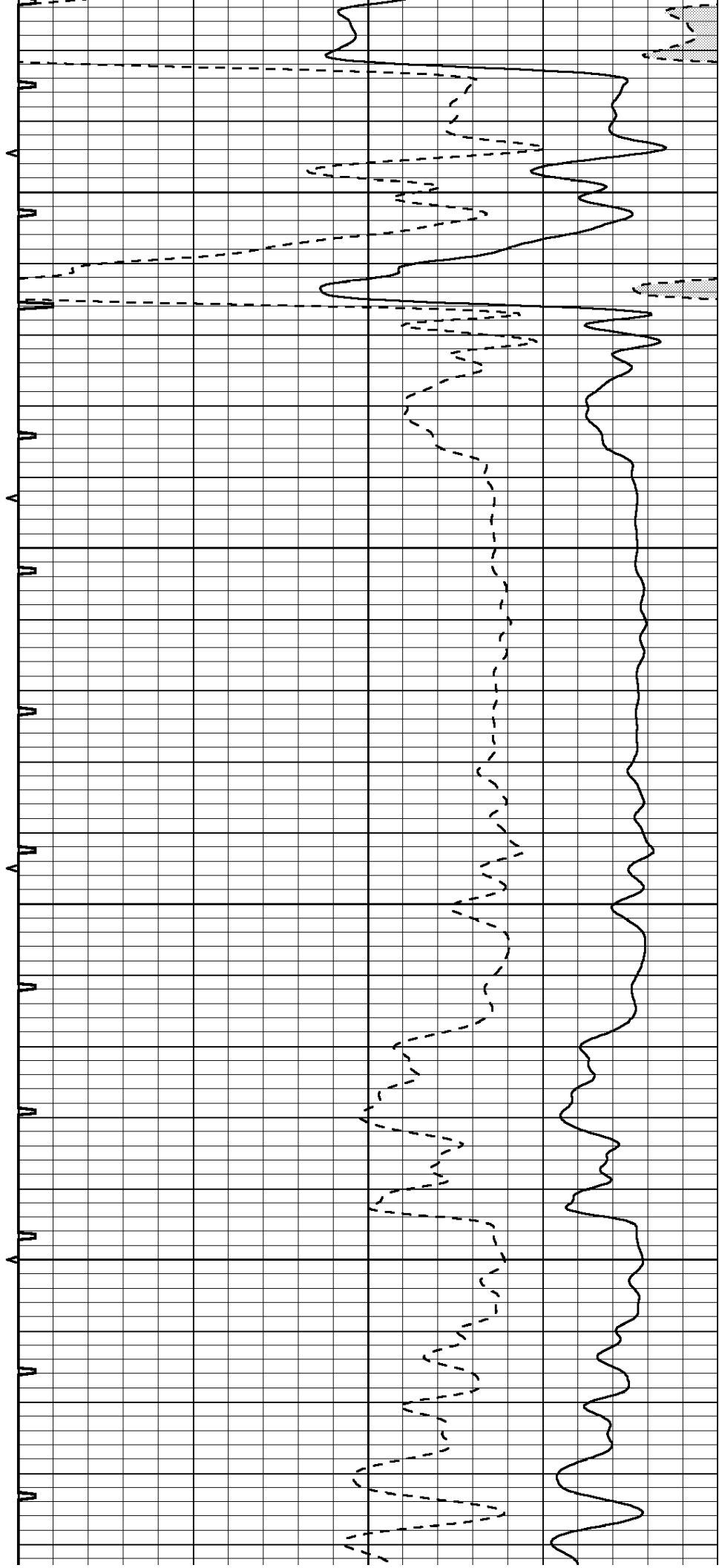


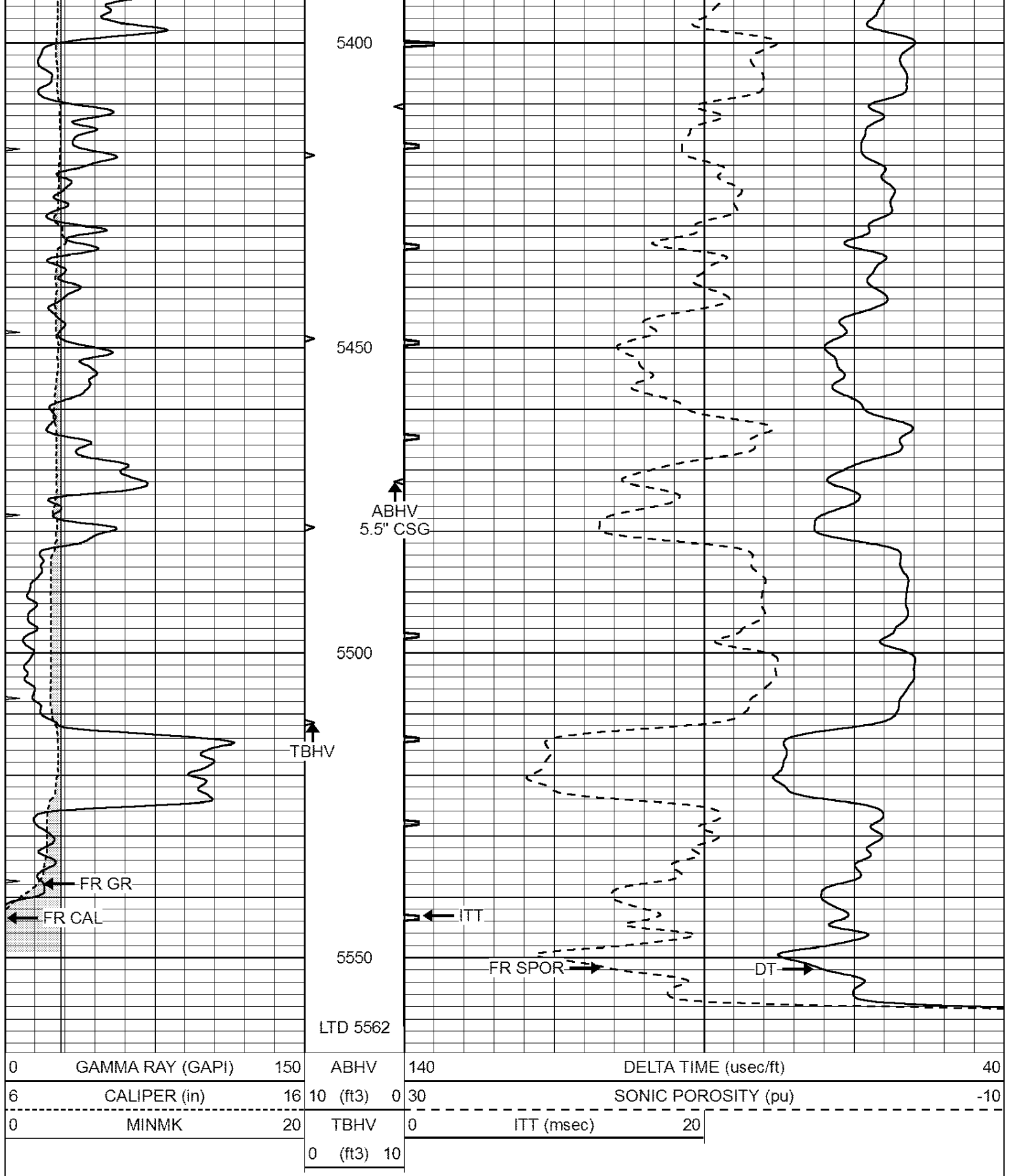
5200

5250

5300

5350





Database File: 22117pe.db
Dataset Pathname: pass6.1
Presentation Format: _slt
Dataset Creation: Sun Jan 05 16:36:39 2014 by Calc Open-Cased 090629
Charted by: Depth in Feet scaled 1:240

0	GAMMA RAY (GAPI)	150	ABHV	140	DELTA TIME (usec/ft)	40
6	CALIPER (in)	16	10 (ft3) 0	30	SONIC POROSITY (pu)	-10
0	MINMK	20	TBHV	0	ITT (msec)	20
			0 (ft3) 10			

