



NABORS

**COMPLETION
& PRODUCTION
SERVICES CO.**

MICRO LOG

Company	MULL DRILLING COMPANY, INC.		
Well	DICKEY "A" #1-14		
Field			
County	CHEYENNE	State	COLORADO
Location:	AP1 #: 05-017-07776-0000 1927' FNL & 1119' FEL		Other Services CDL/CNL/PE DIL/SON
Permanent Datum	SEC 14 TWP 16S RGE 45W	Elevation	
Log Measured From	GROUND LEVEL	Elevation	4368
Drilling Measured From	KELLY BUSHING 11' A.G.L.	K.B. 4379 D.F. 4377 G.L. 4368	
Date	1/5/14		
Run Number	TWO		
Depth Driller	5560		
Depth Logger	5562		
Bottom Logged Interval	5544		
Top Log Interval	3850		
Casing Driller	8 5/8" @ 847		
Casing Logger	640		
Bit Size	7 7/8"		
Type Fluid in Hole	CHEMICAL MUD	CHLORIDES 5000 PPM	
Density / Viscosity	9.1/54		
pH / Fluid Loss	10.0/8.0		
Source of Sample	FLOWLINE		
Rm @ Meas. Temp	.70 @ 50F		
Rmt @ Meas. Temp	.52 @ 50F		
Rmc @ Meas. Temp	.84 @ 50F		
Source of Rmt / Rmc	MEASUREMENT		
Rm @ BHT	.26 @ 130F		
Time Circulation Stopped	2 HOURS		
Time Logger on Bottom			
Maximum Recorded Temperature	130F		
Equipment Number	4010		
Location	HAYS, KANSAS		
Recorded By	JASON CAPPELLUCCI		
Witnessed By	PHIL ASKEY		

<<< Fold Here >>>

All interpretations are opinions based on inferences from electrical or other measurements and we cannot and do not guarantee the accuracy or correctness of any interpretation, and we shall not, except in the case of gross or willful negligence on our part, be liable or responsible for any loss, costs, damages, or expenses incurred or sustained by anyone resulting from any interpretation made by any of our officers, agents or employees. These interpretations are also subject to our general terms and conditions set out in our current Price Schedule.

Comments

THANK YOU FOR USING NABORS, HAYS, KS. (785) 628-6395
DIRECTIONS:
CHEYENNE WELLS, CO. - 9 SOUTH TO RD G - 6 WEST - 3 SOUTH - 1 MILE EAST INTO

Database File:

22117pe.db

Dataset Pathname:

pass7.1.1

Presentation Format:

_micro

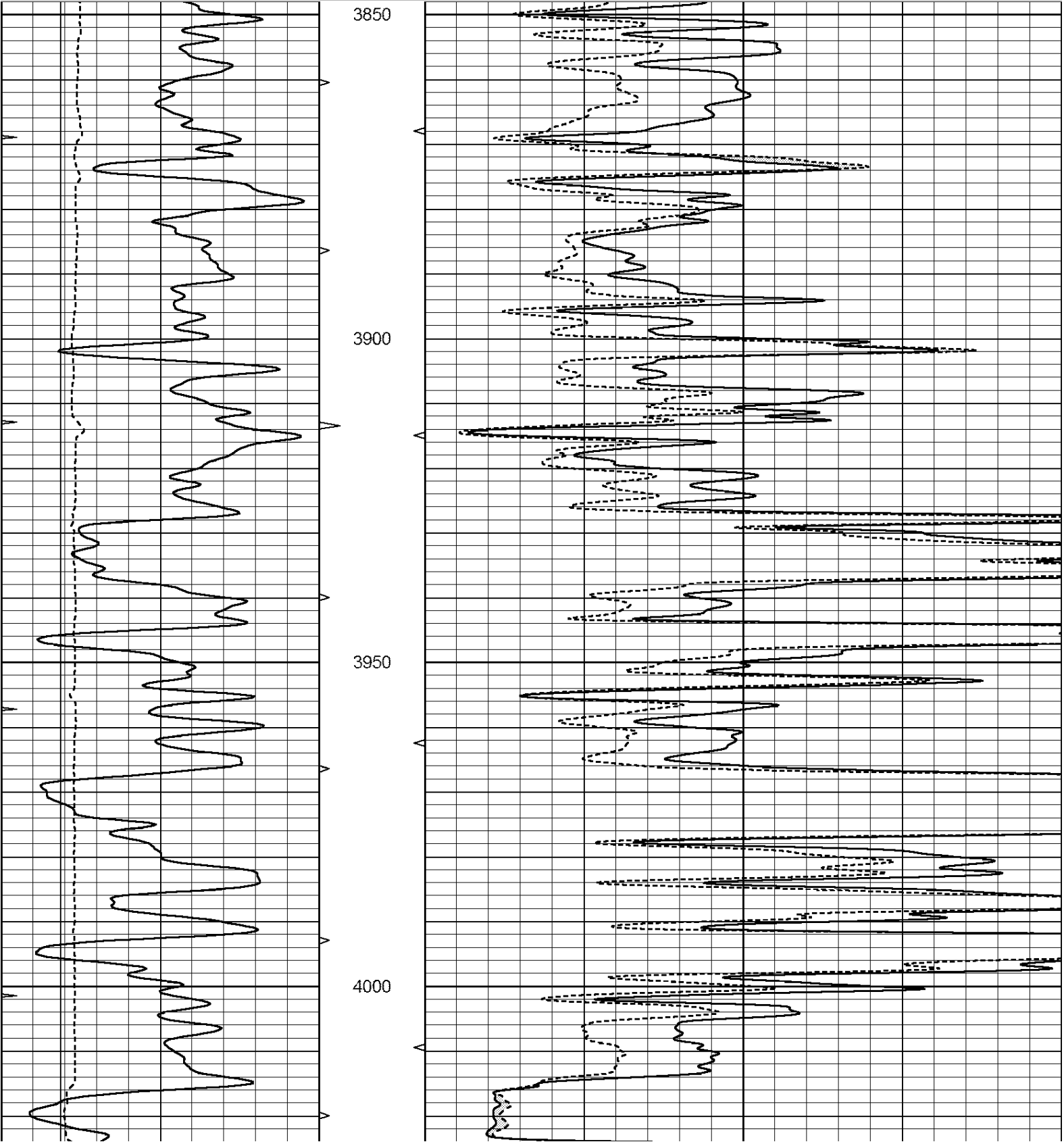
Dataset Creation:

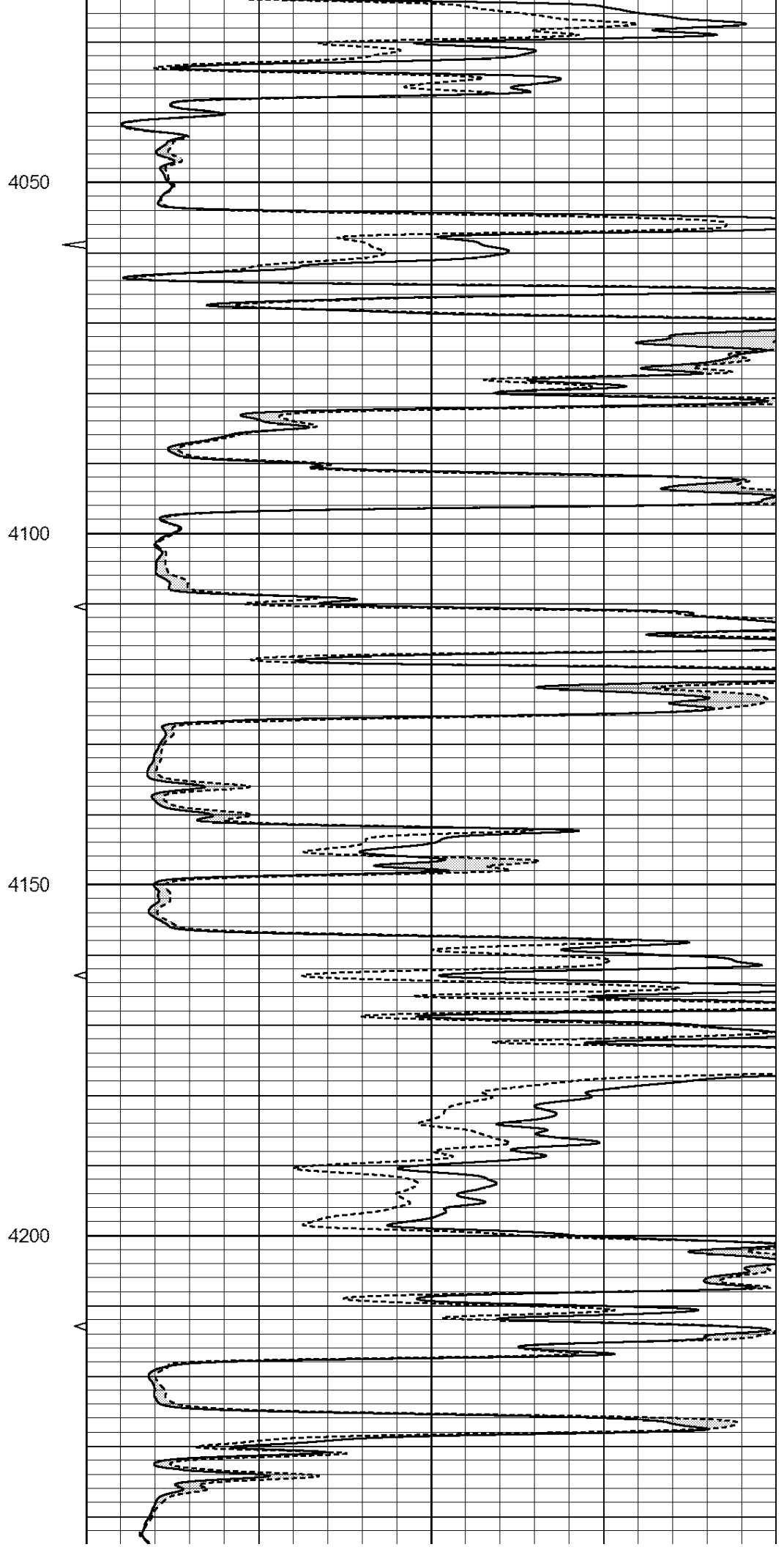
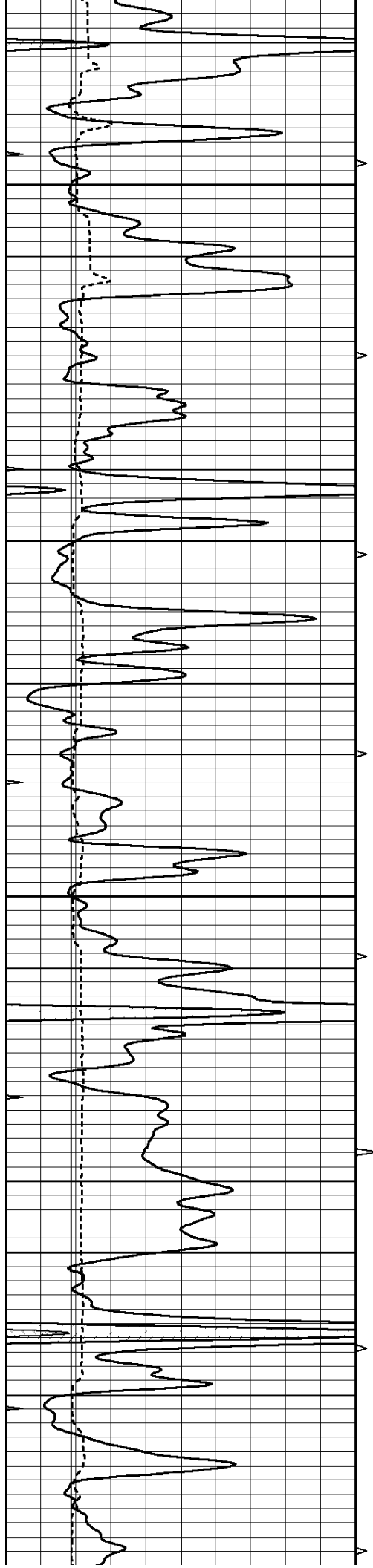
Sun Jan 05 16:45:45 2014

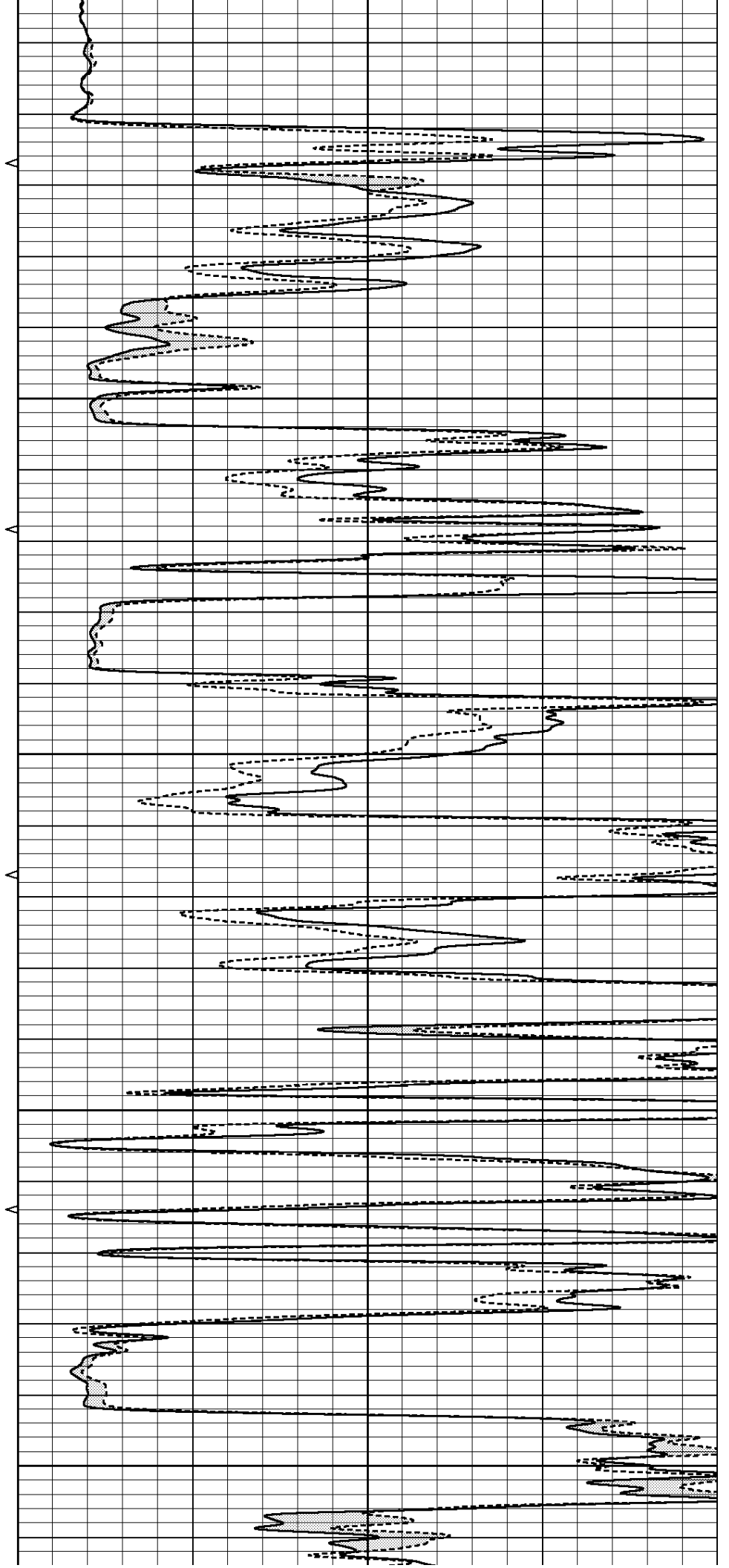
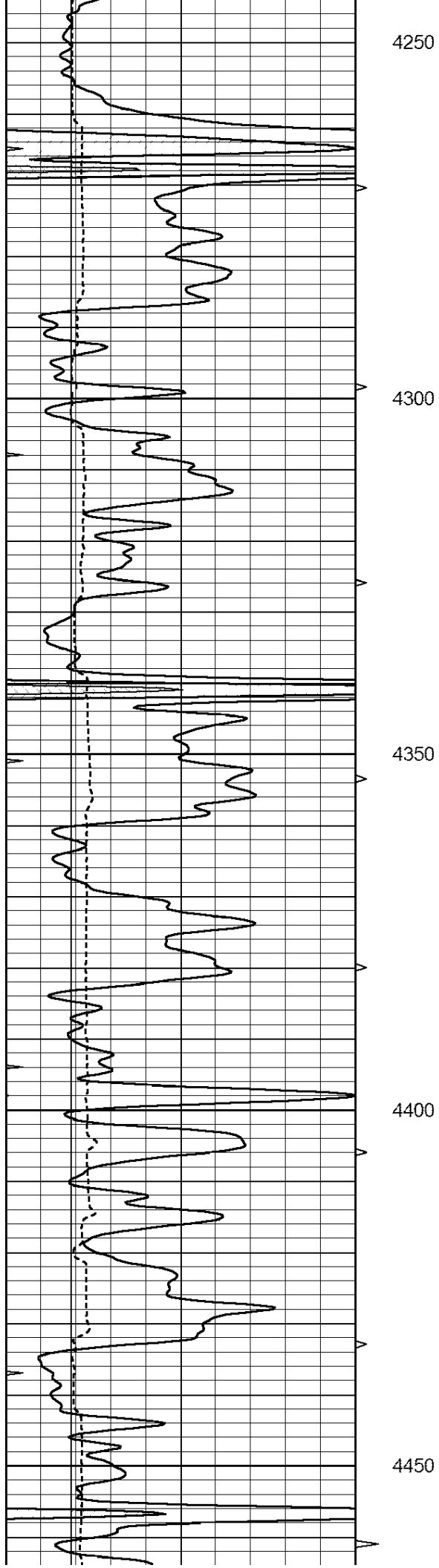
Charted by:

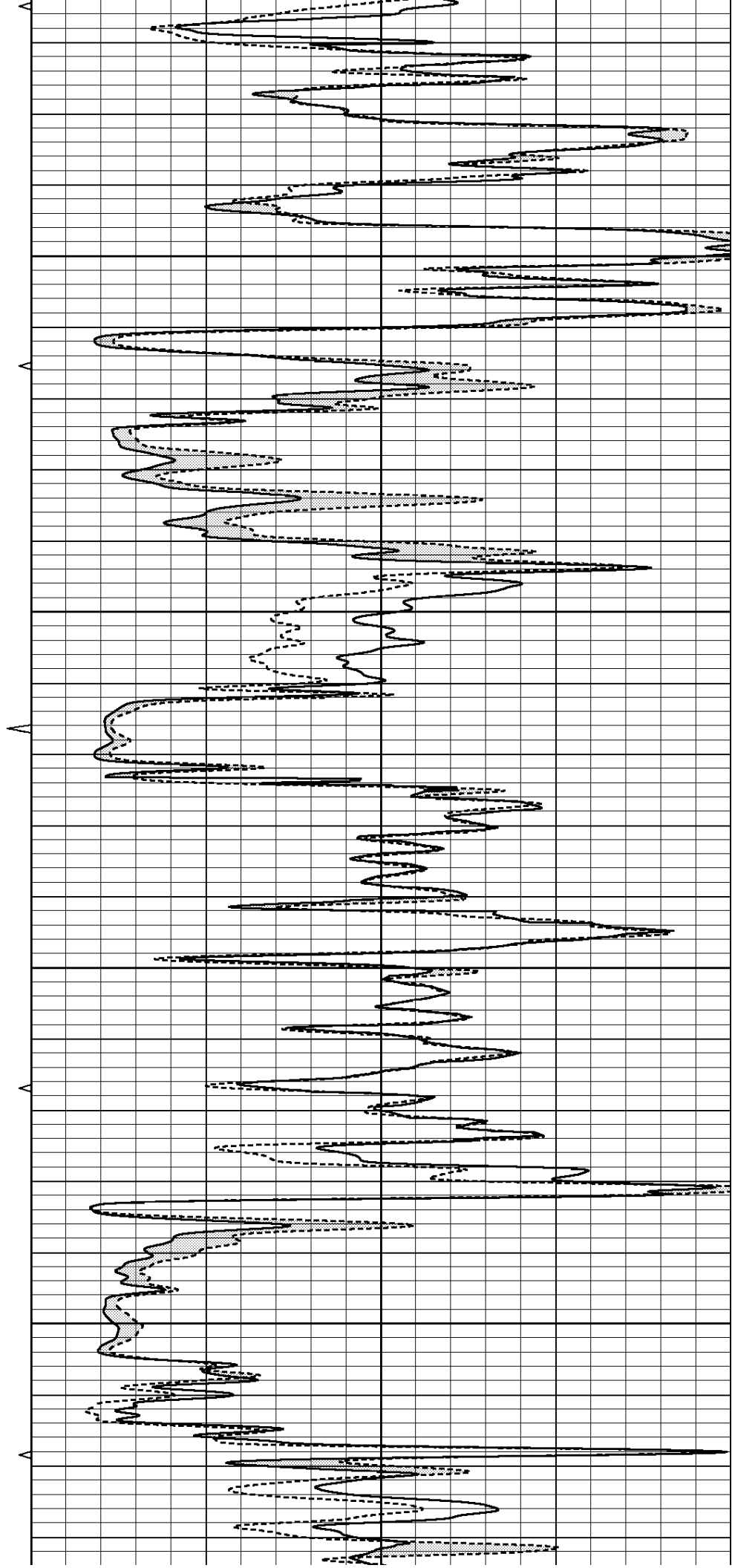
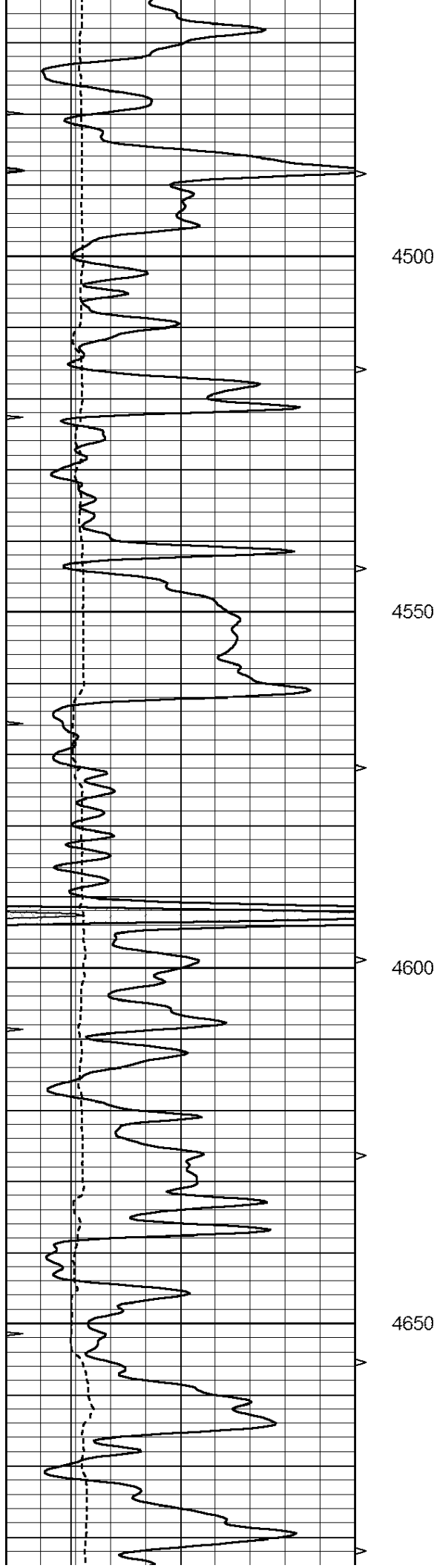
Depth in Feet scaled 1:240

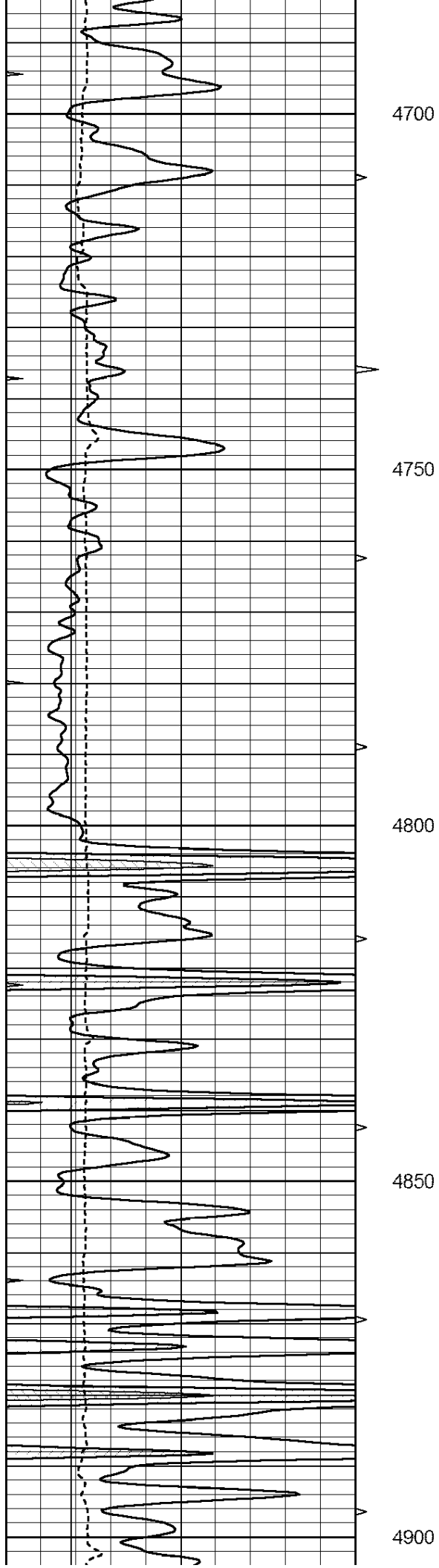
0	GAMMA RAY (GAPI)	150	ABHV	0	MEL1.5 (Ohm-m)	40
6	CALIPER (in)	16	10 (ft3)	0	MEL2.0 (Ohm-m)	40
0	MINMK	20	TBHV			
			0 (ft3)	10		











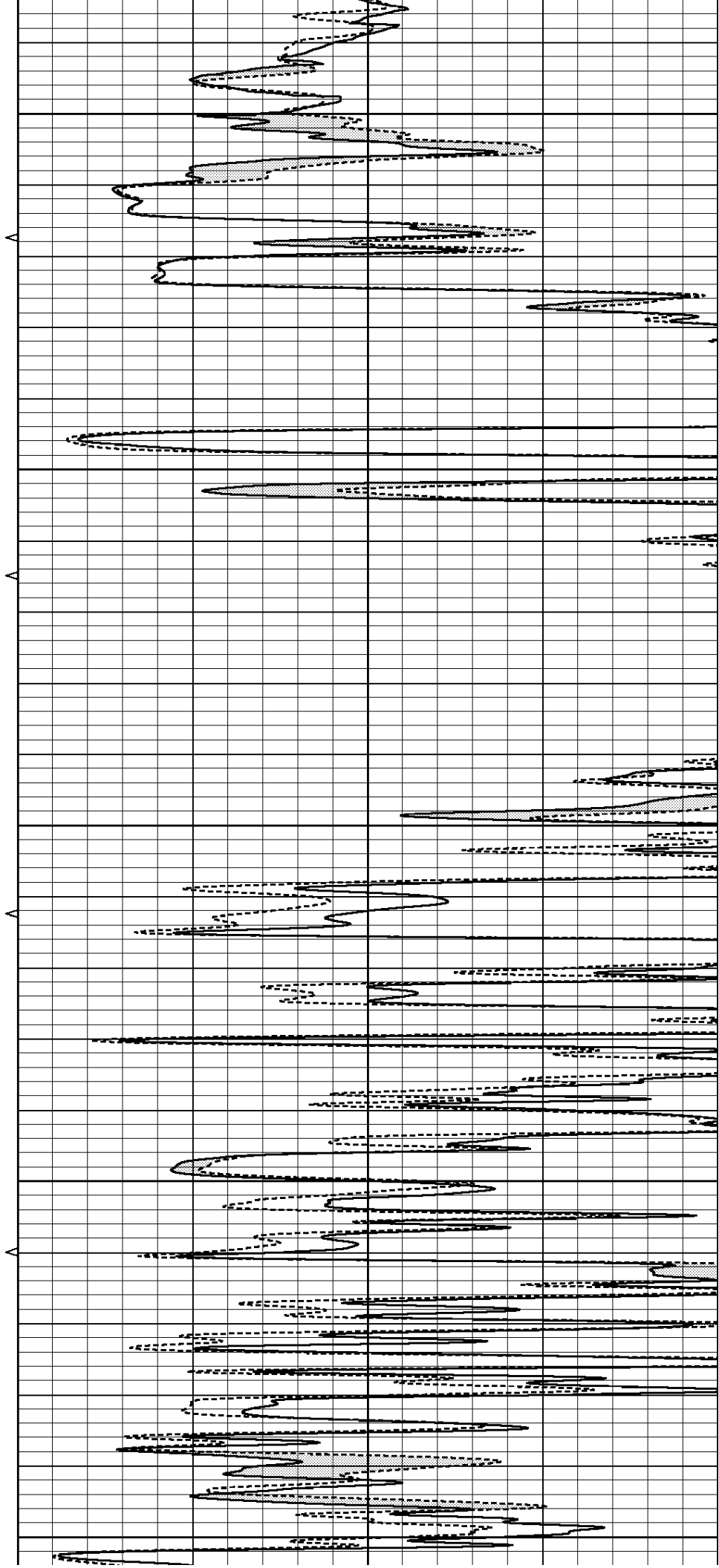
4700

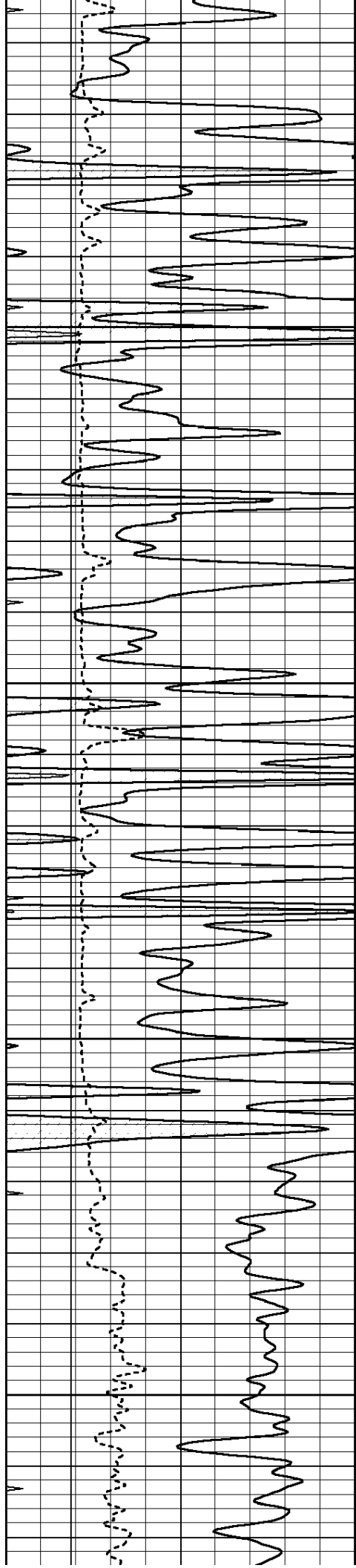
4750

4800

4850

4900



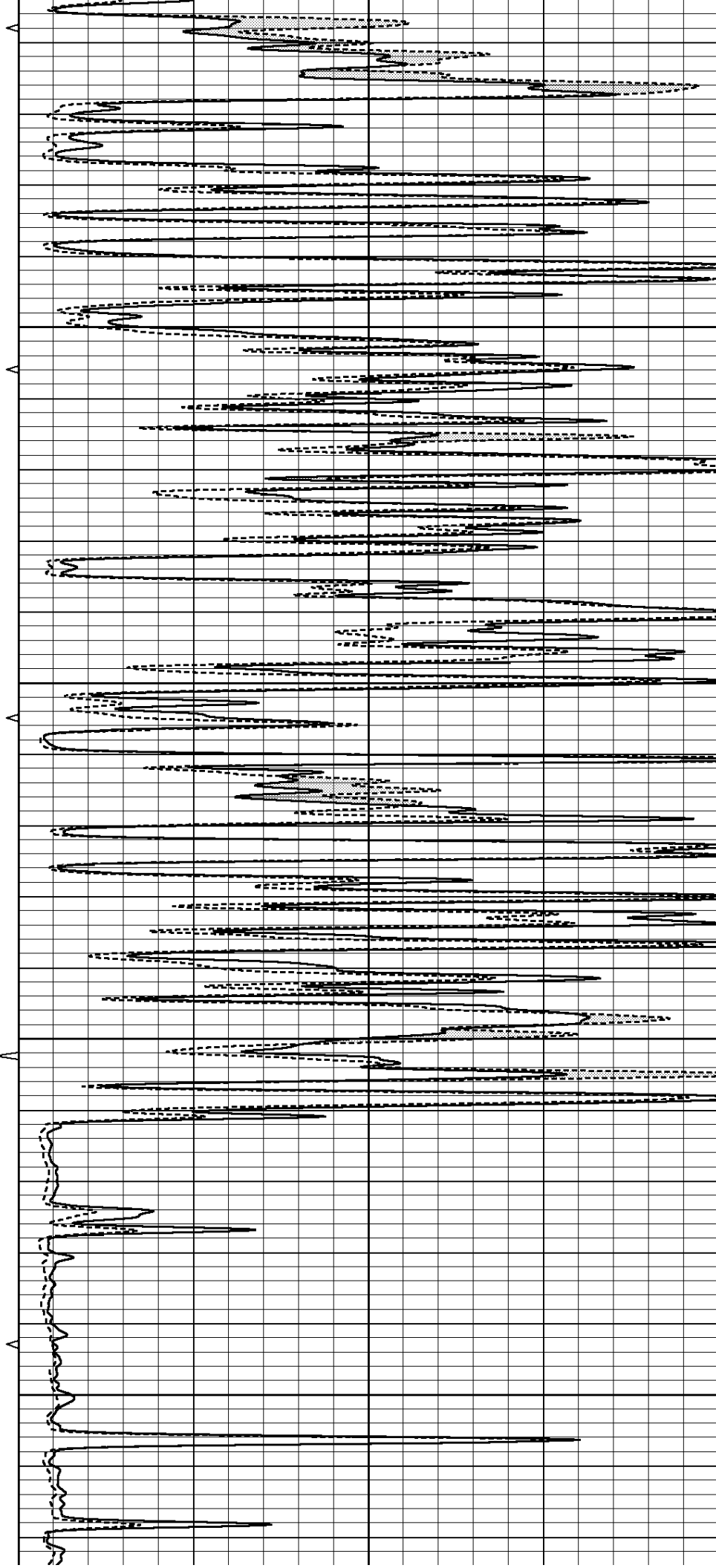


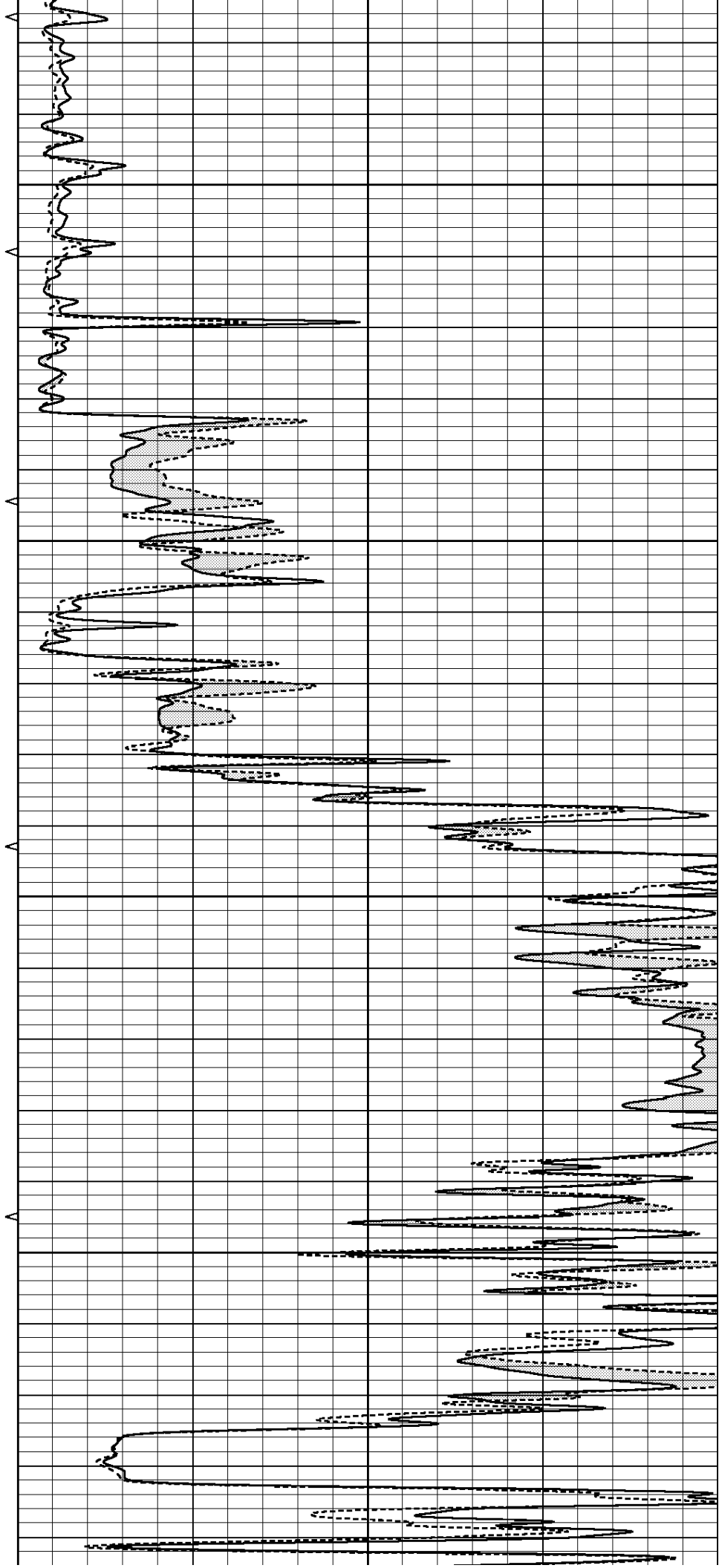
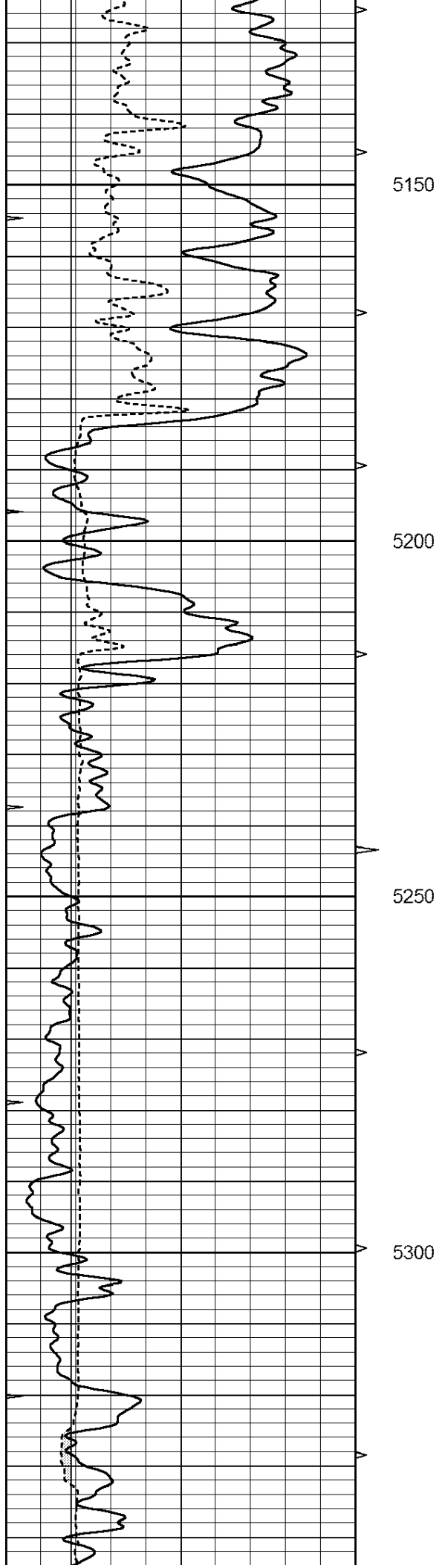
4950

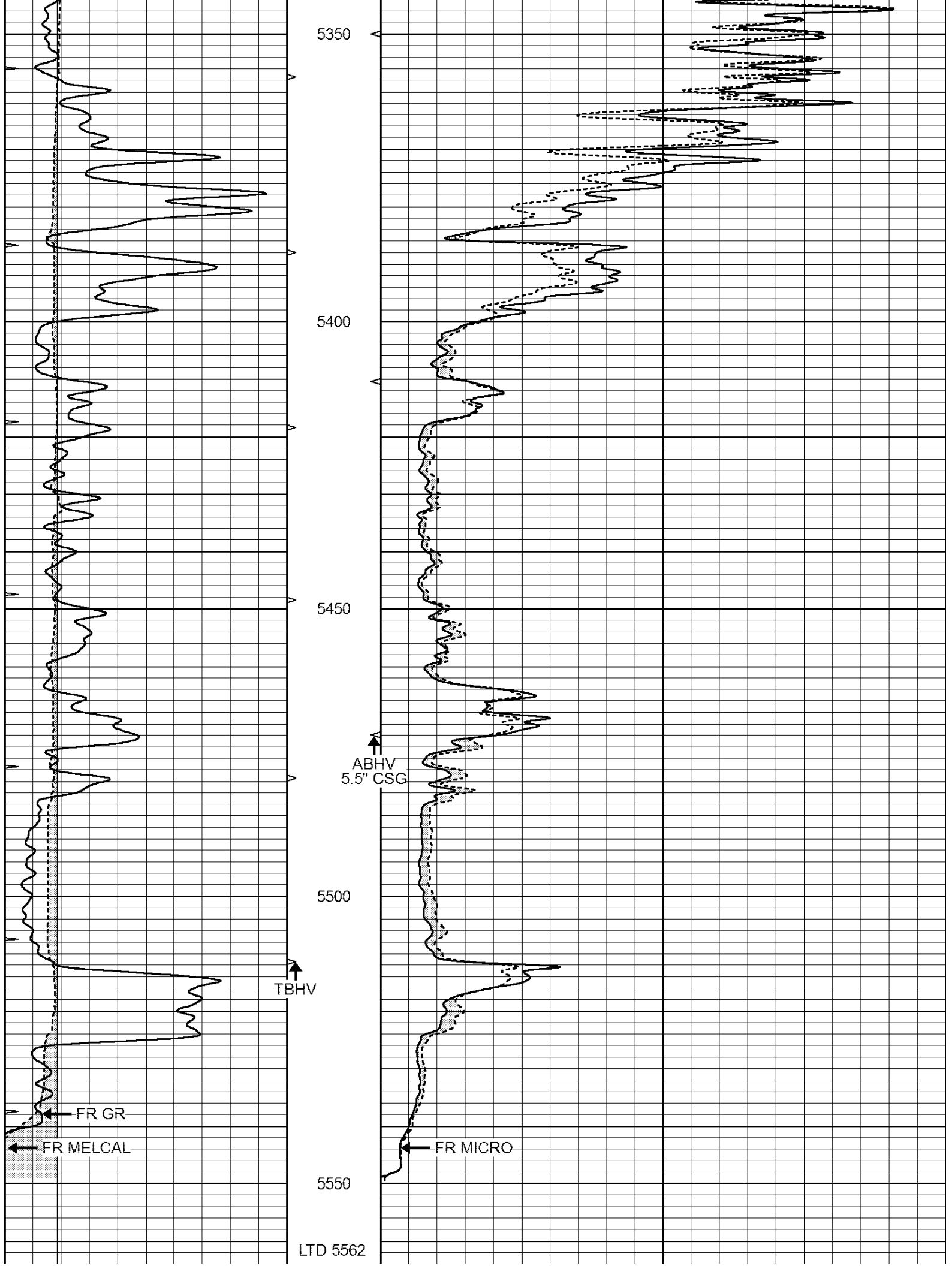
5000

5050

5100







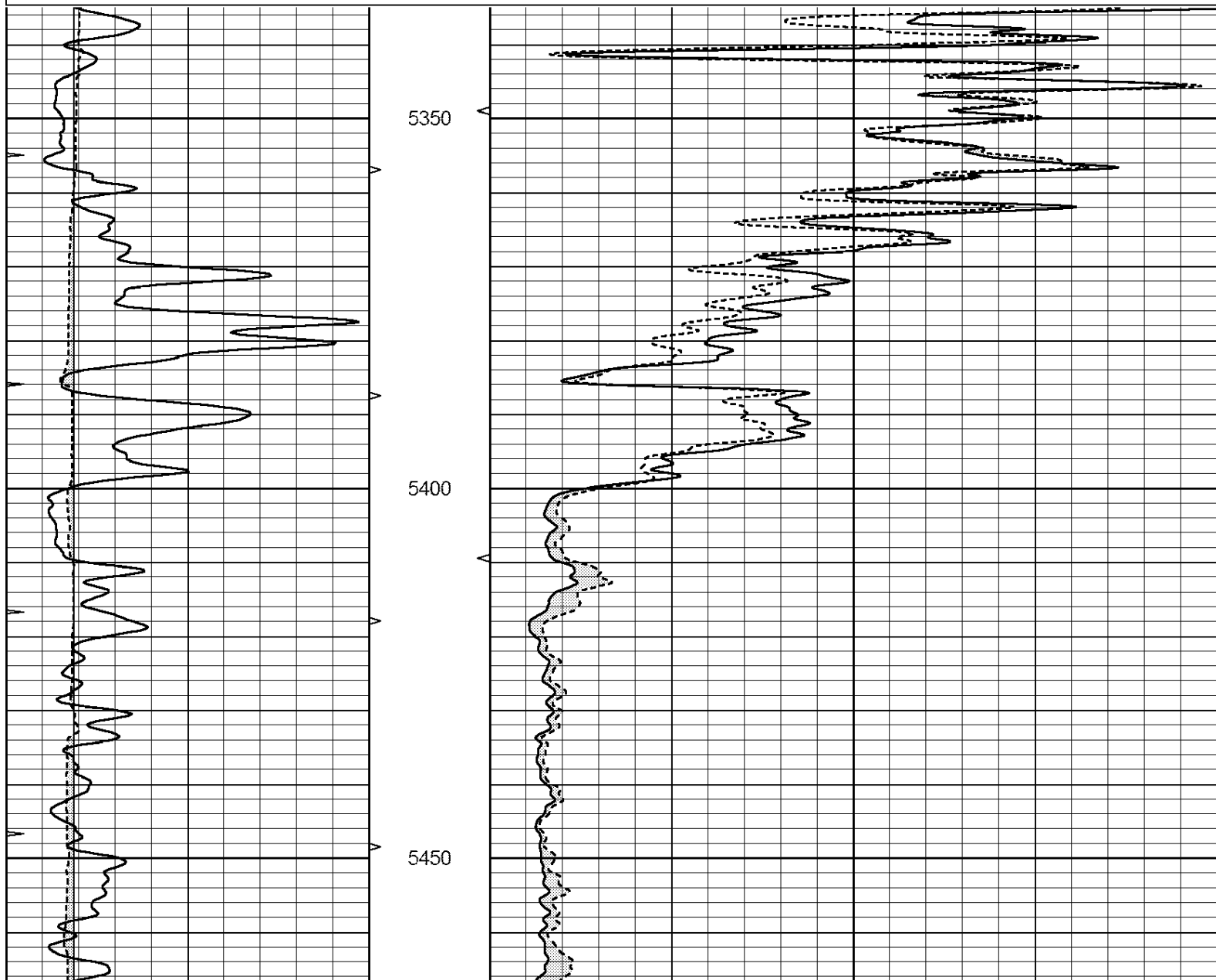
0	GAMMA RAY (GAPI)	150	ABHV	0	MEL1.5 (Ohm-m)	40
6	CALIPER (in)	16	10 (ft3)	0	MEL2.0 (Ohm-m)	40
0	MINMK	20	TBHV			
			0 (ft3)	10		

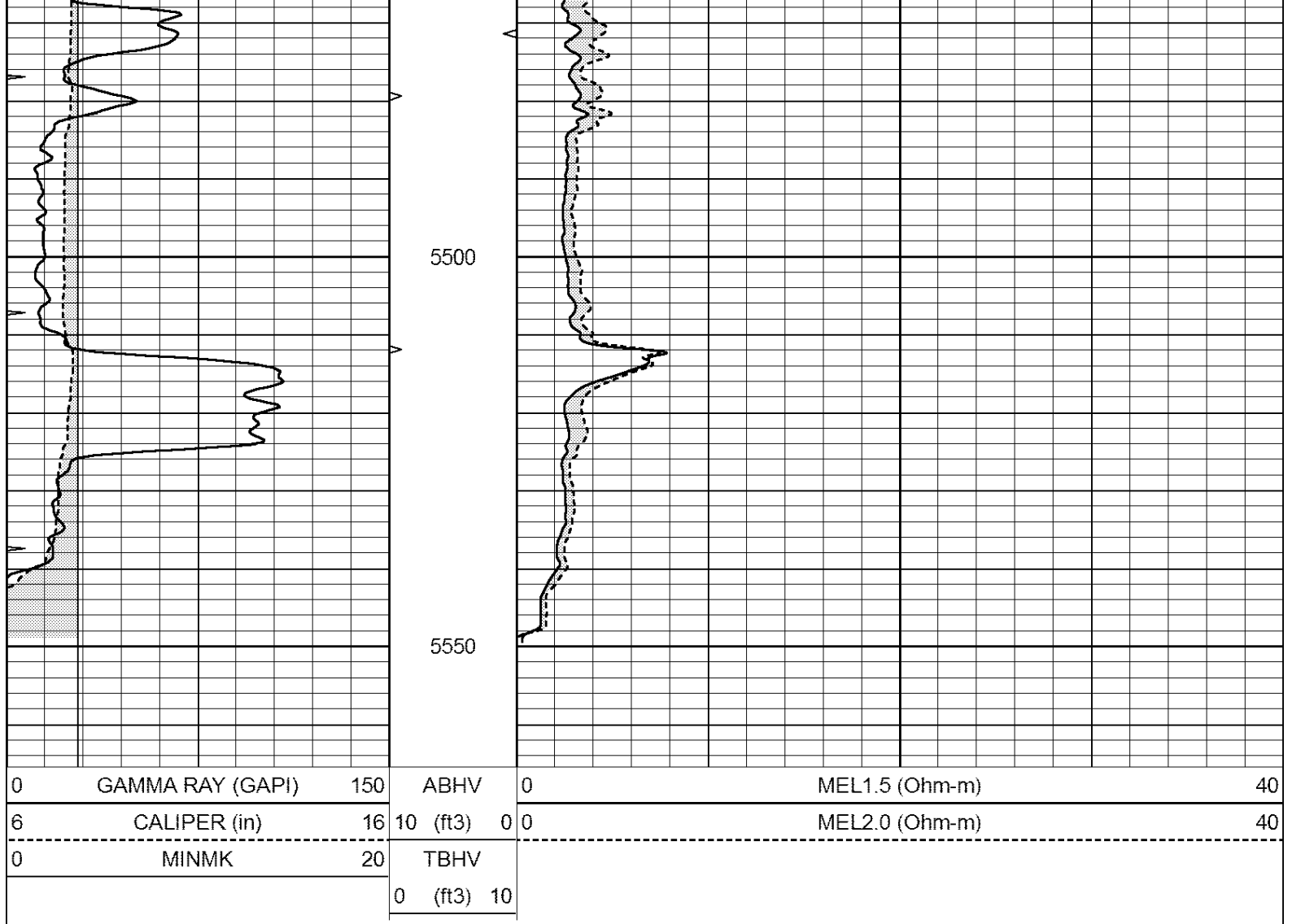


REPEAT SECTION

Database File: 22117pe.db
Dataset Pathname: pass6.1
Presentation Format: _micro
Dataset Creation: Sun Jan 05 16:36:39 2014 by Calc Open-Cased 090629
Charted by: Depth in Feet scaled 1:240

0	GAMMA RAY (GAPI)	150	ABHV	0	MEL1.5 (Ohm-m)	40
6	CALIPER (in)	16	10 (ft3)	0	MEL2.0 (Ohm-m)	40
0	MINMK	20	TBHV			
			0 (ft3)	10		





Calibration Report			
Database File:	22117pe.db		
Dataset Pathname:	pass6.1		
Dataset Creation:	Sun Jan 05 16:36:39 2014 by Calc Open-Cased 090629		
MICRO Calibration Report			
Serial Number:	MICRO6		
Tool Model:	PROBE		
Performed:	Thu Jan 02 15:52:11 2014		
Caliper Calibration:	Gain=5.542	Offset=-0.720	
	Low Cal	High Cal	
References	8.000	14.000	
Readings	1.431	2.513	
1.5" Calibration:	Gain=38.075	Offset=0.300	
	Low Cal	High Cal	
References	0.000	20.000	
Readings	0.004	1.196	
2" Calibration:	Gain=35.041	Offset=0.000	
	Low Cal	High Cal	
References	0.000	20.000	
Readings	0.006	0.913	
Gamma Ray Calibration Report			

Serial Number:	GR6	
Tool Model:	OPEN	
Performed:	Fri Nov 29 08:34:37 2013	

Calibrator Value:	150.0	GAPI
-------------------	-------	------

Background Reading:	0.0	cps
Calibrator Reading:	276.0	cps

Sensitivity:	0.6035	GAPI/cps
--------------	--------	----------