



**RADIAL CEMENT BOND LOG**  
**GAMMA RAY**  
**CCL**

Company Kerr McGee Oil and Gas  
Well Bultaup 21-6  
Field Wattenberg  
County WELD State CO

Location: SW NE  
API # : 05-123-26883  
Other Services

SEC 6 TWP 1N RGE 68W  
Permanent Datum GL Elevation 4972  
Log Measured From KB 14'  
Drilling Measured From KB  
Elevation  
K.B. 4986  
D.F. 4985  
G.L. 4972

Company Kerr McGee Oil and Gas  
Well Bultaup 21-6  
Field Wattenberg  
County WELD  
State CO

Date 1-13-2014

Run Number ONE  
Depth Driller 7853  
Depth Logger 3830  
Bottom Logged Interval 3830  
Top Log Interval 800  
Open Hole Size 7.875  
Type Fluid WATER  
Density / Viscosity 1.0  
Max. Recorded Temp. 960  
Estimated Cement Top 960  
Time Well Ready  
Time Logger on Bottom 3812  
Equipment Number GREELEY  
Location J.J. Bullard  
Recorded By J.J. Bullard  
Witnessed By J.Chandler

Borehole Record  
Run Number Bit From To Size Weight From To  
ONE 12.25 0 815  
TWO 8.875 815 7853

Casing Record Size Wgt/Ft Top Bottom  
Surface String  
Prot. String  
Production String  
Liner

<<< Fold Here >>>

All interpretations are opinions based on inferences from electrical or other measurements and we cannot and do not guarantee the accuracy or correctness of any interpretation, and we shall not, except in the case of gross or willful negligence on our part, be liable or responsible for any loss, costs, damages, or expenses incurred or sustained by anyone resulting from any interpretation made by any of our officers, agents or employees. These interpretations are also subject to our general terms and conditions set out in our current Price Schedule.

Comments

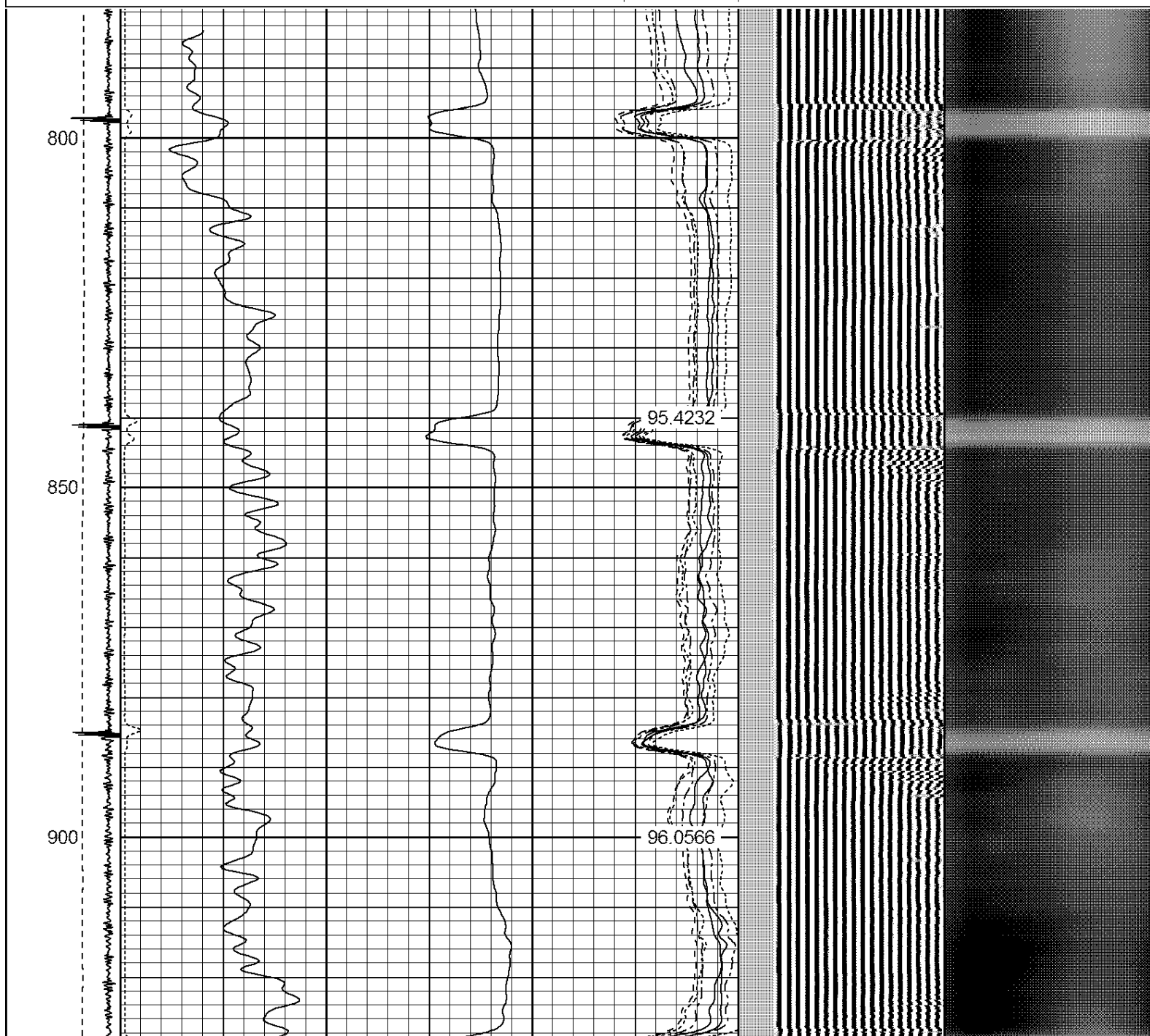
THANK YOU FOR USING WARRIOR ENERGY!!!!

Sensor	Offset (ft)	Schematic	Description	Len (ft)	OD (in)	Wt (lb)



Database File: jay.db  
 Dataset Pathname: pass3  
 Presentation Format: ips\_rbt  
 Dataset Creation: Mon Jan 13 08:06:43 2014 by Log 7.0 B1  
 Charted by: Depth in Feet scaled 1:240

-9	CCL	1	250	TT (usec)	950	0	AMP (mV)	100	0	AMPS1	100	200	VDL	1200	1	Cement Map	8
LSPD			0	GR (GAPI)	200	0	AMPx5 (mV)	20	0	AMPS2	100				1		100
(ft/min)			200	GR (GAPI)	400				0	AMPS4	100						
0		250							0	AMPS5	100						
									0	AMPS6	100						
									0	AMPS7	100						
									0	AMPS8	100						
										IntTemp							
										(degF)							



950

Top of Cement →

96.7081

1000

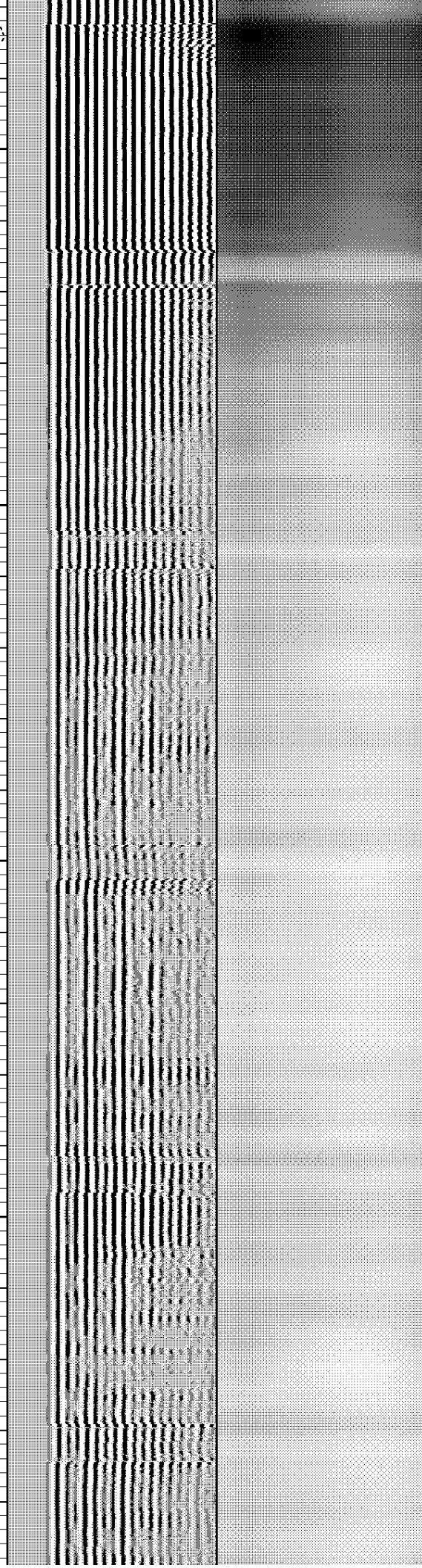
97.221

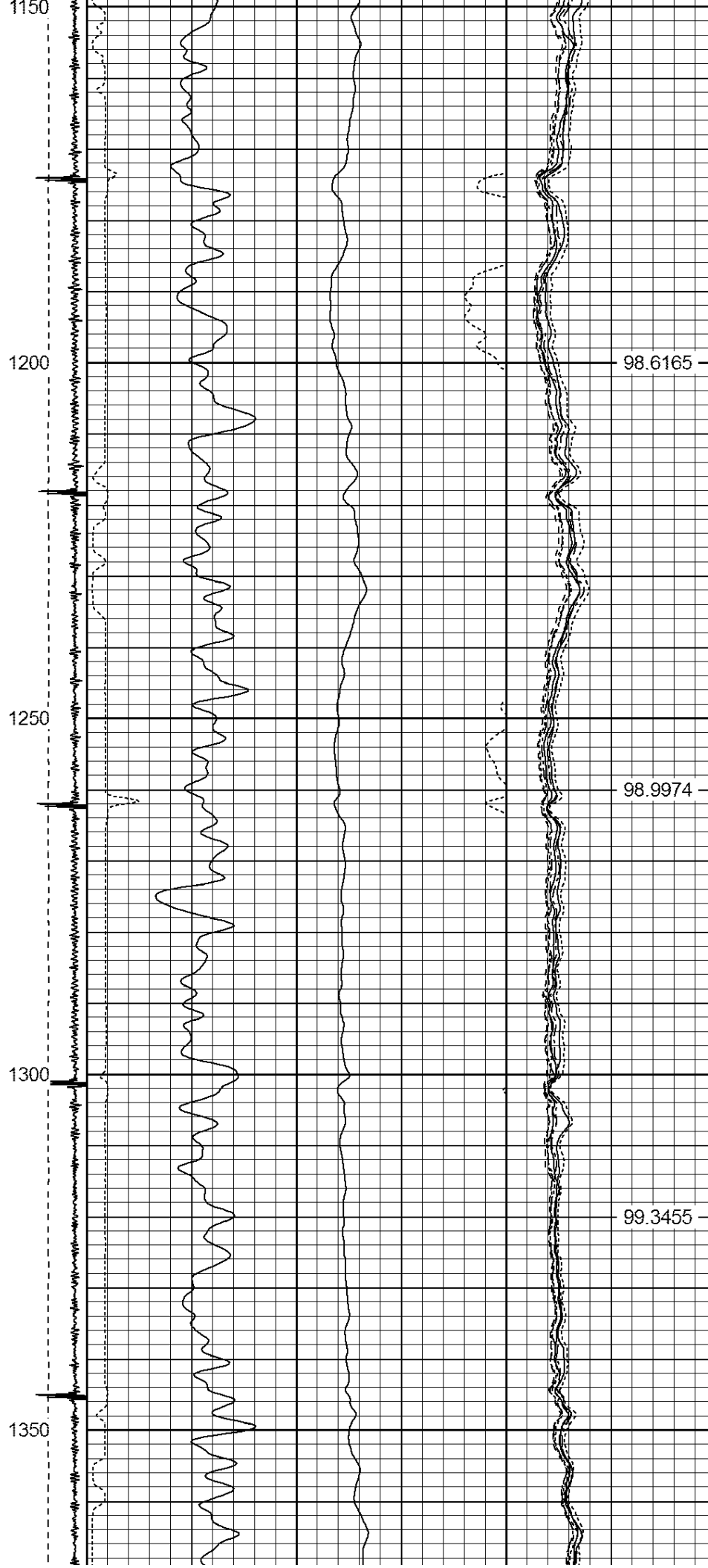
1050

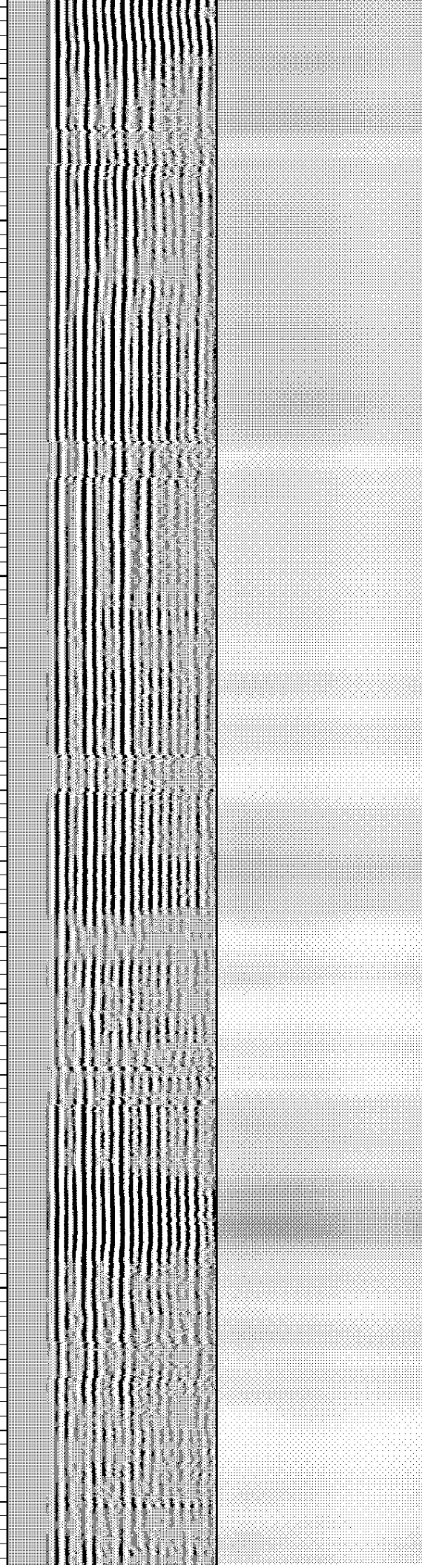
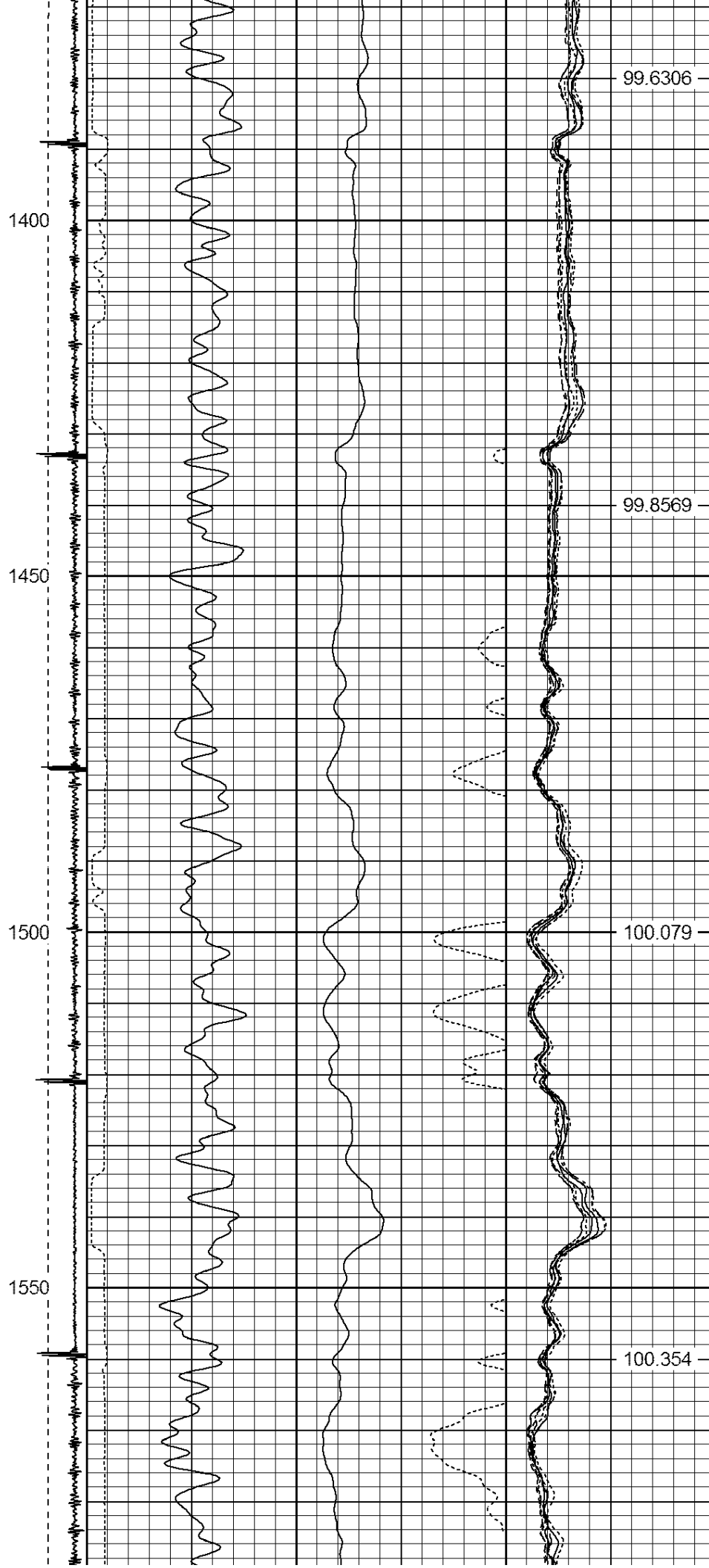
97.7373

1100

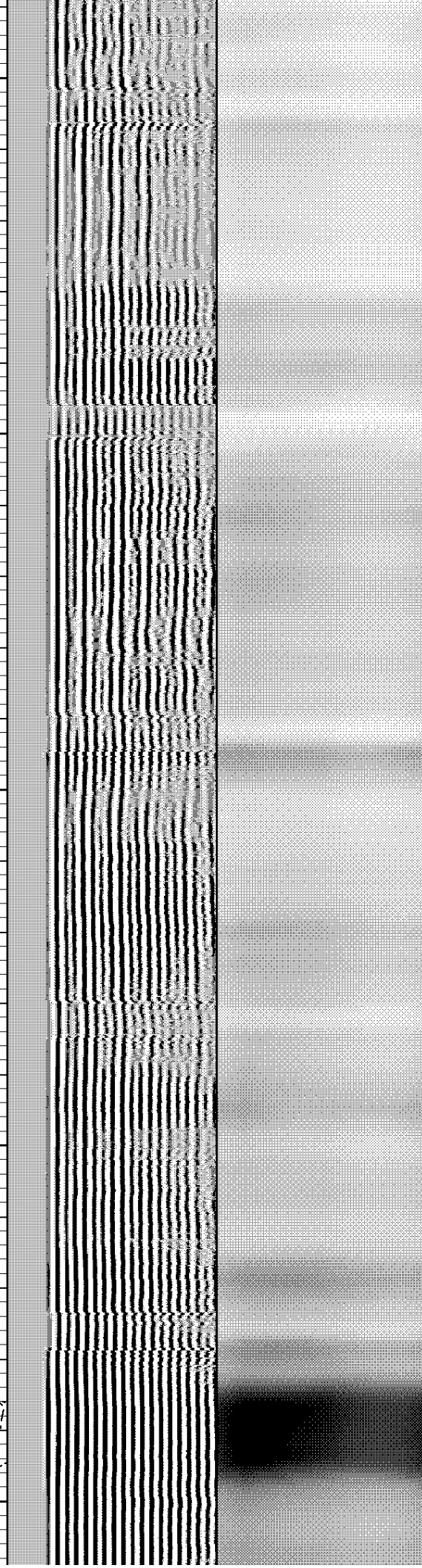
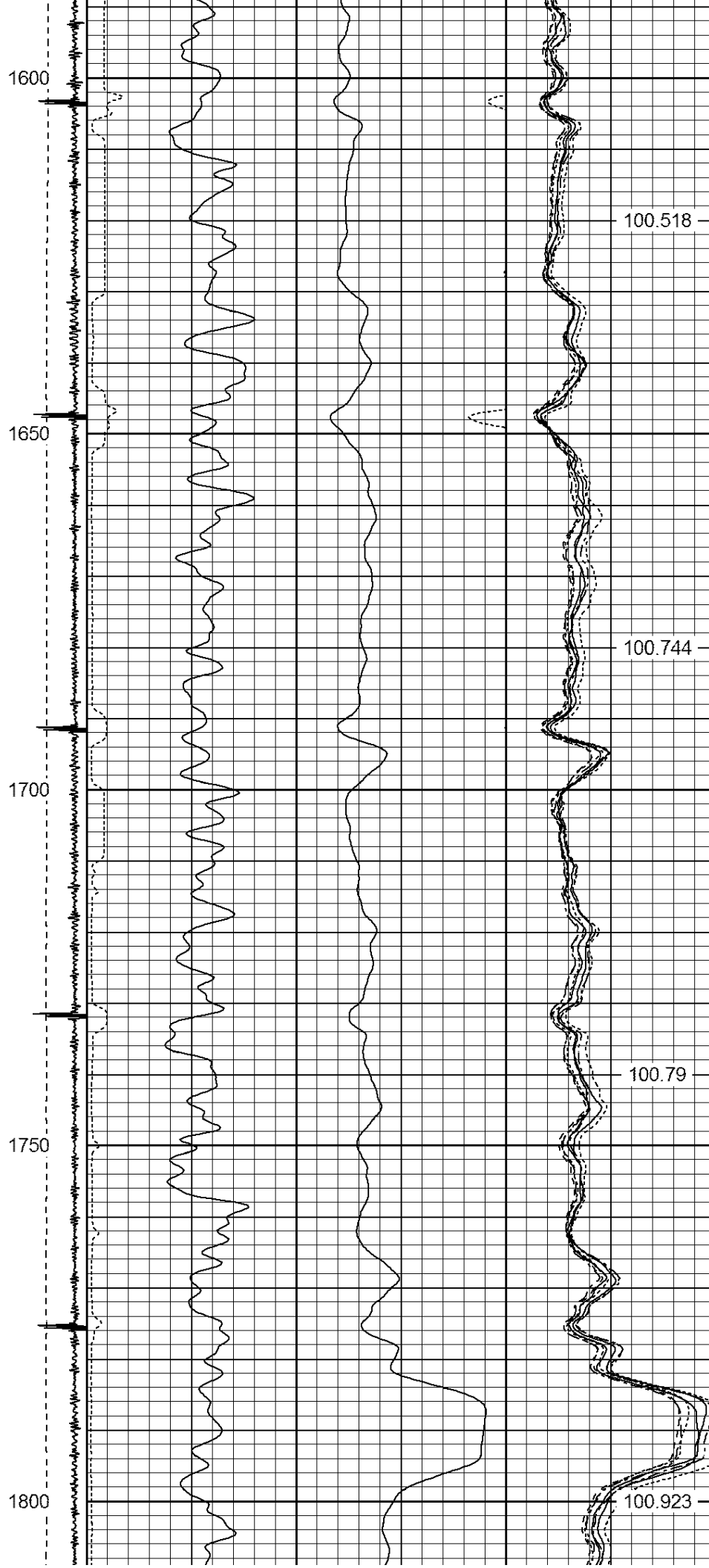
98.1873

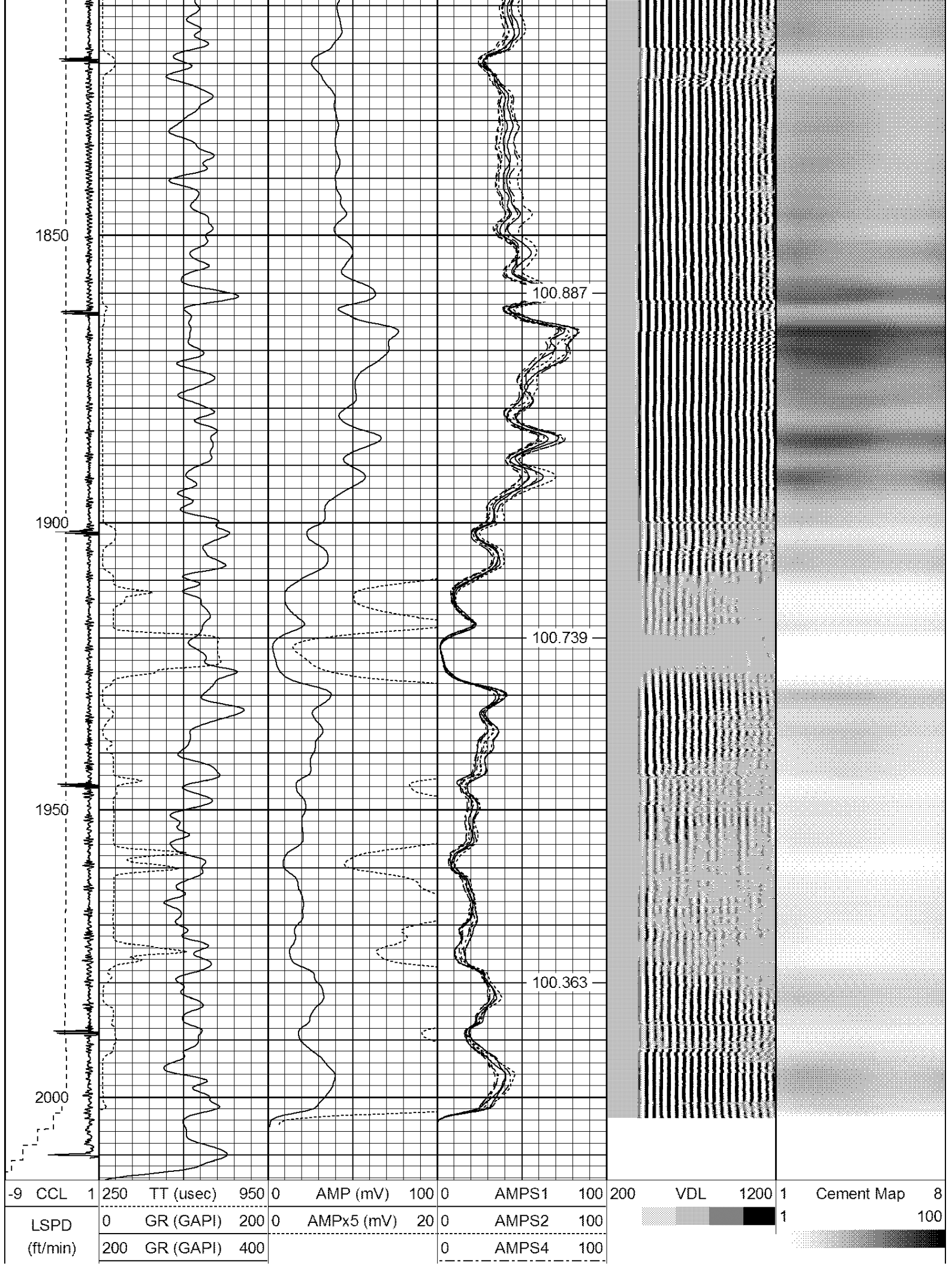










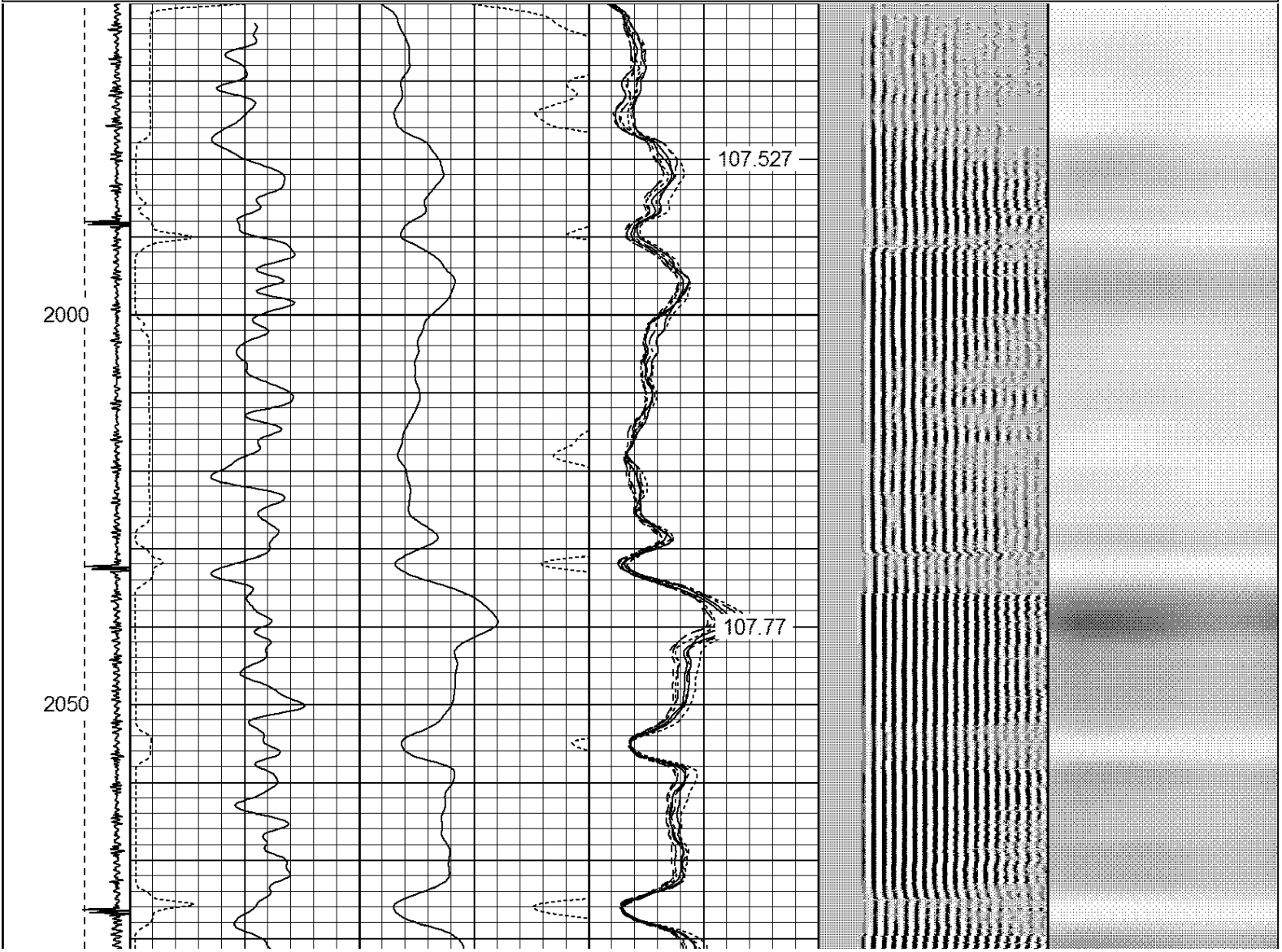


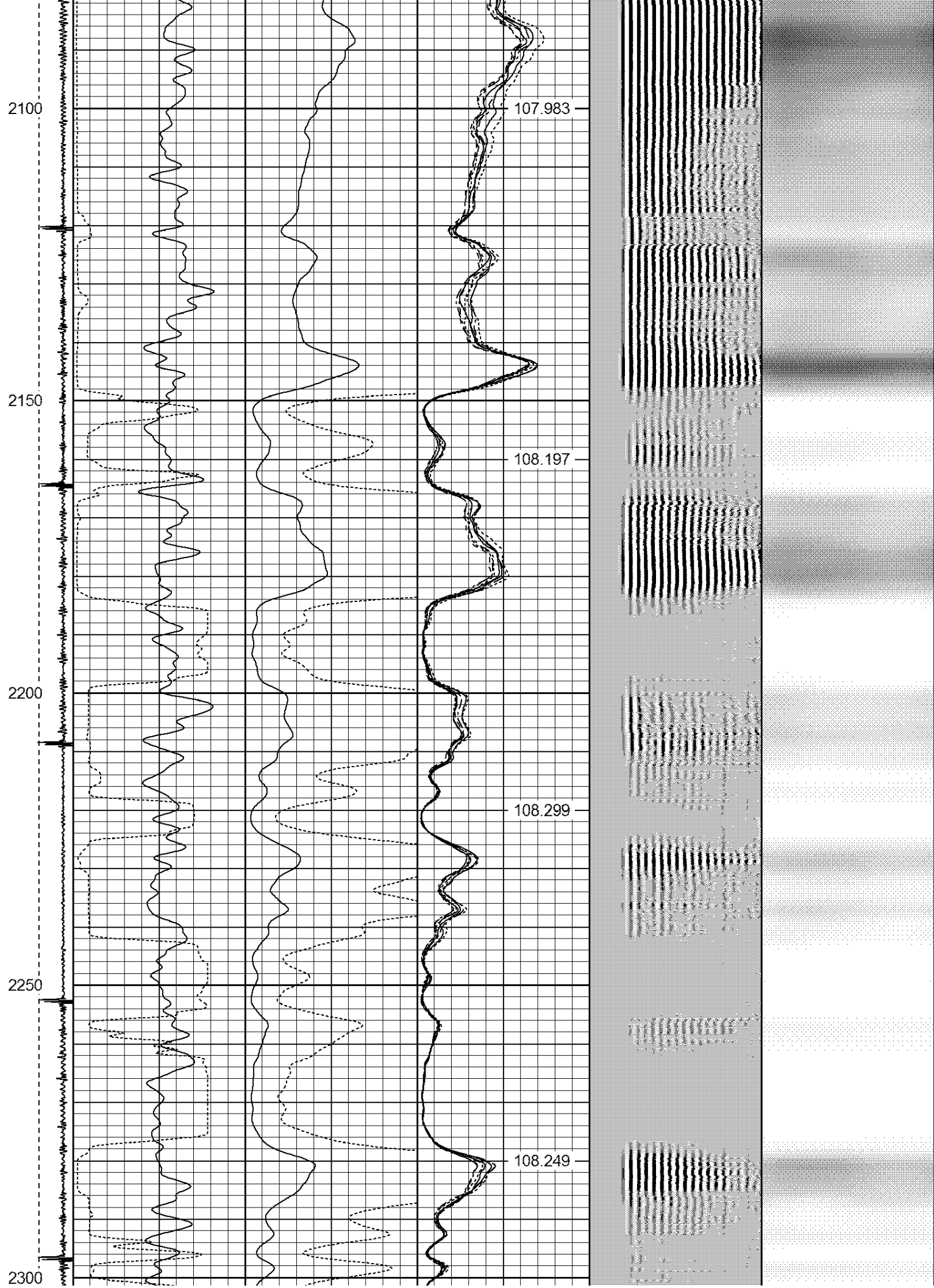




0	250	0	AMPS5	100
		0	AMPS6	100
		0	AMPS7	100
		0	AMPS8	100
			IntTemp	
			(degF)	

Database File: jay.db																	
Dataset Pathname: pass2																	
Presentation Format: ips_rbt																	
Dataset Creation: Mon Jan 13 07:47:57 2014 by Log 7.0 B1																	
Charted by: Depth in Feet scaled 1:240																	
-9	CCL	1	250	TT (usec)	950	0	AMP (mV)	100	0	AMPS1	100	200	VDL	1200	1	Cement Map	8
LSPD (ft/min)			0	GR (GAPI)	200	0	AMPx5 (mV)	20	0	AMPS2	100	 1100					
			200	GR (GAPI)	400				0	AMPS4	100						
0250									0	AMPS5	100						
									0	AMPS6	100						
									0	AMPS7	100						
									0	AMPS8	100						
											IntTemp (degF)						





2350

2400

2450

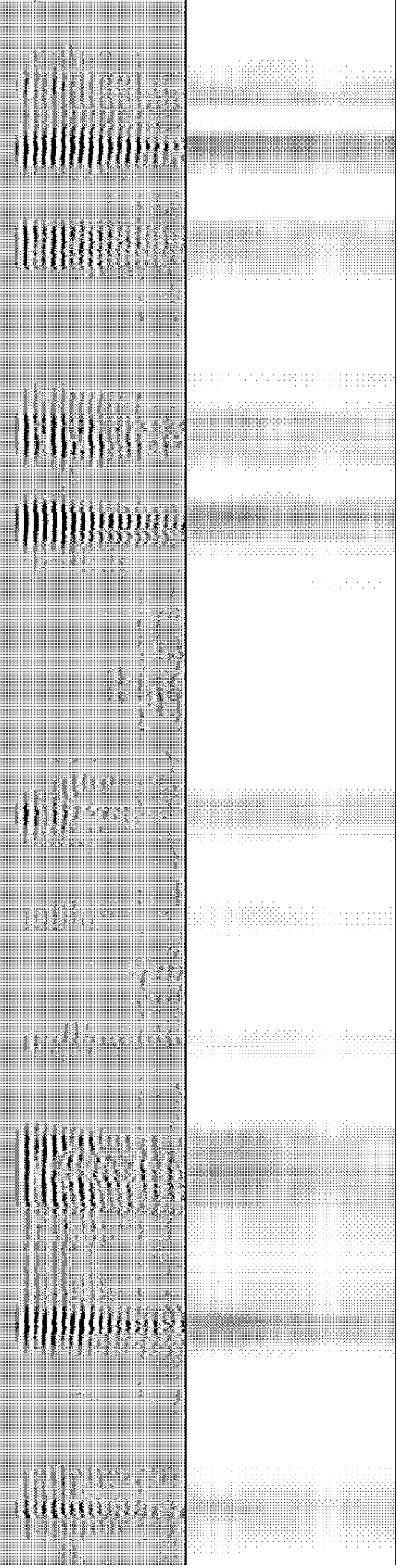
2500

108.237

108.043

107.85

107.617



2550

2600

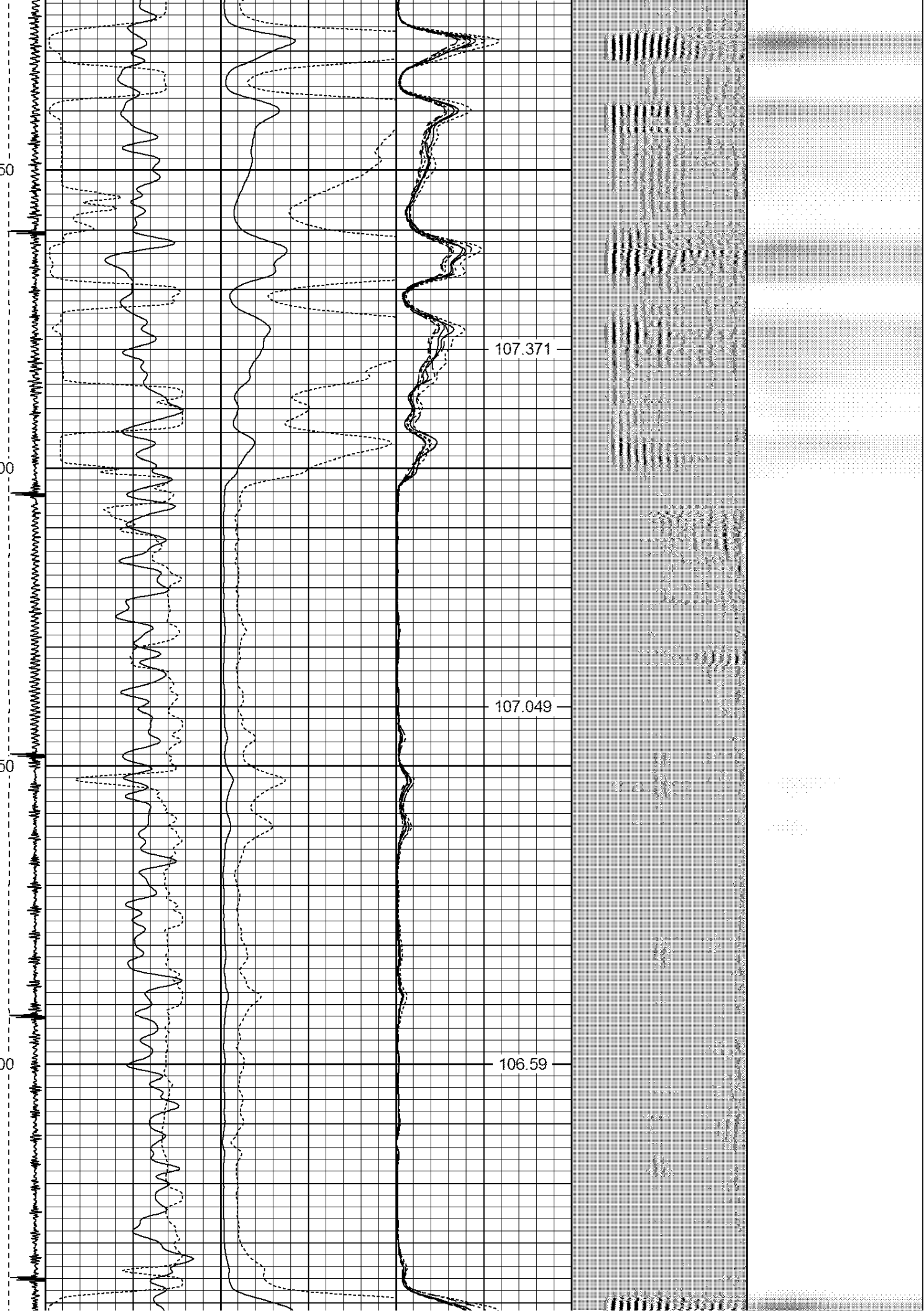
2650

2700

107.371

107.049

106.59



2750

2800

2850

2900

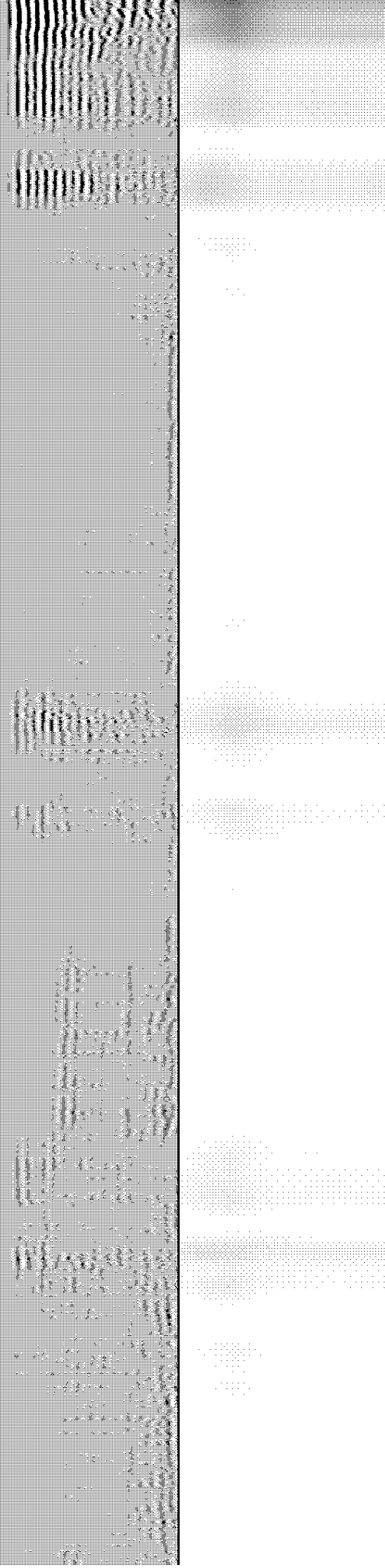
2950

106.096

105.58

104.865

104.091





3000

3050

3100

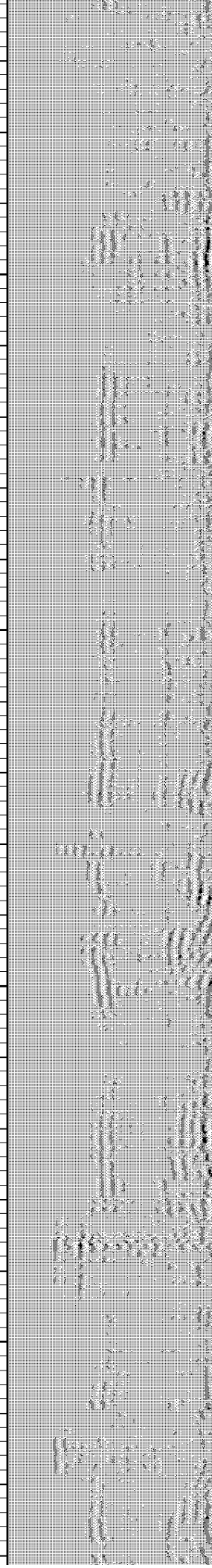
3150

103.297

102.276

101.284

100.205



3200

3250

3300

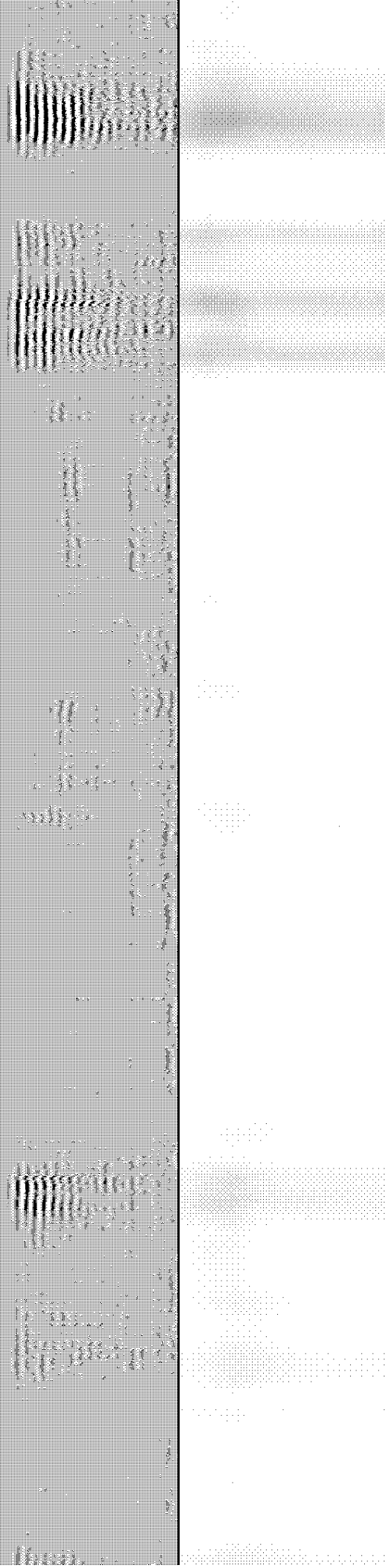
3350

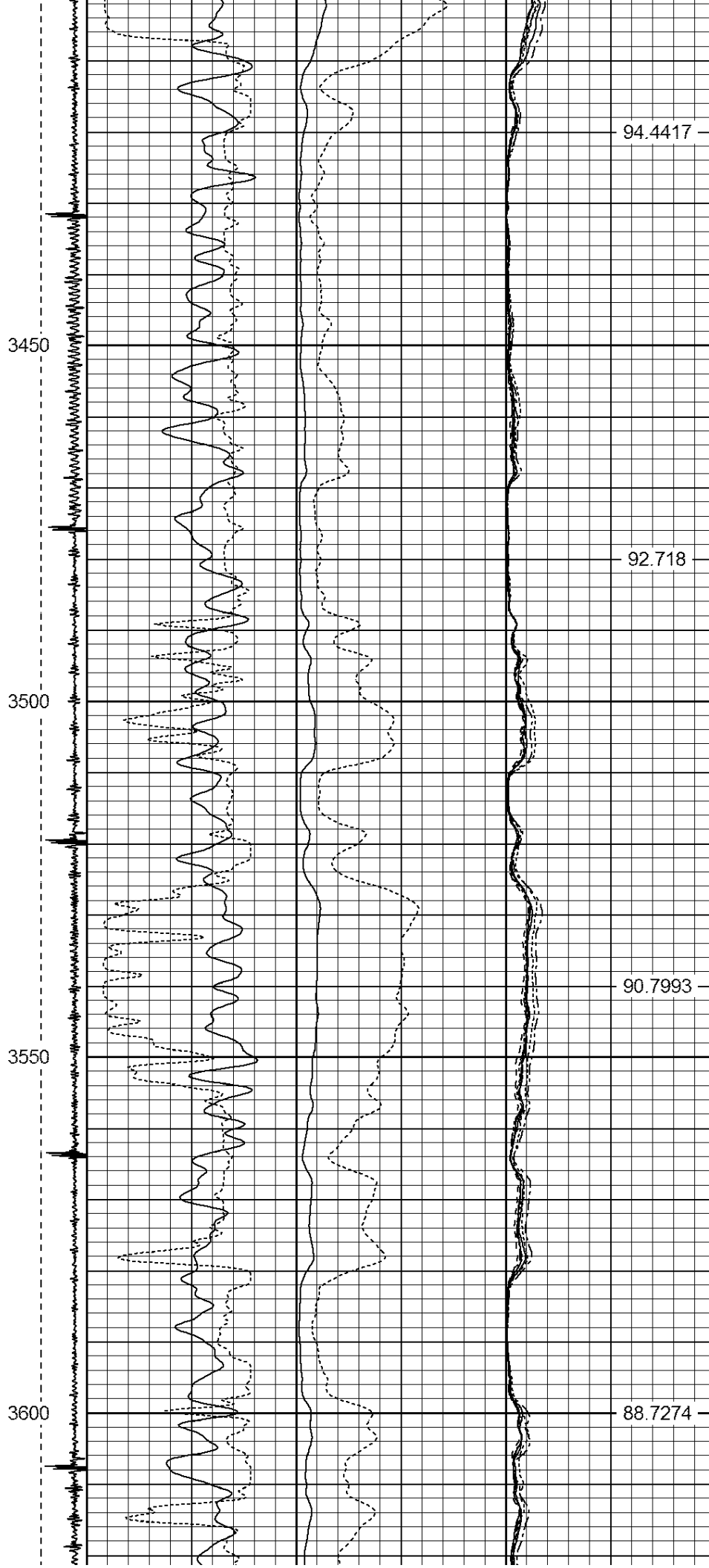
3400

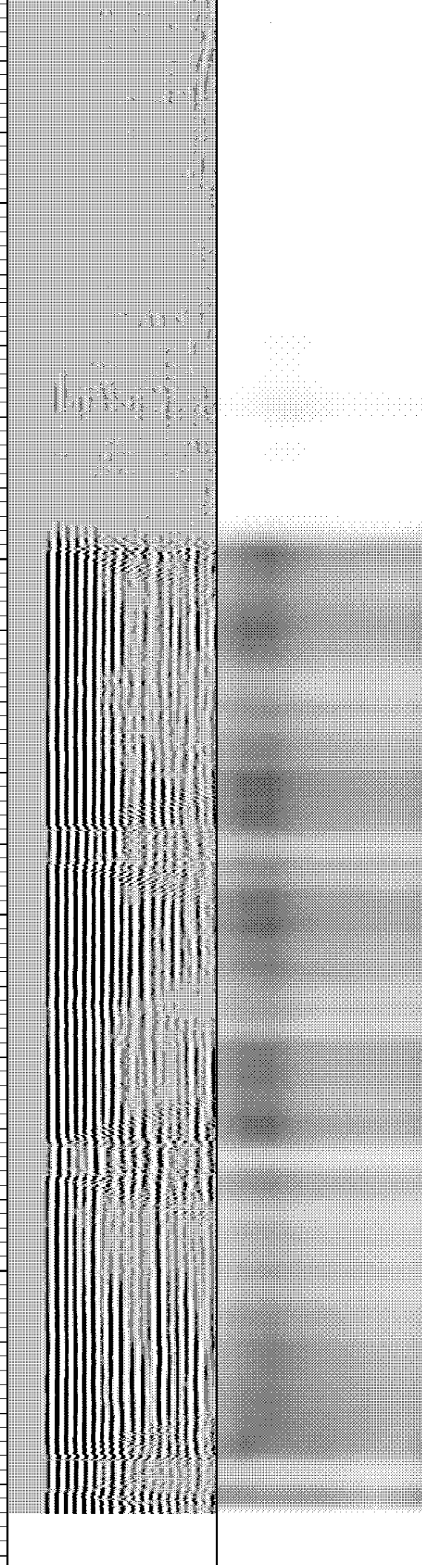
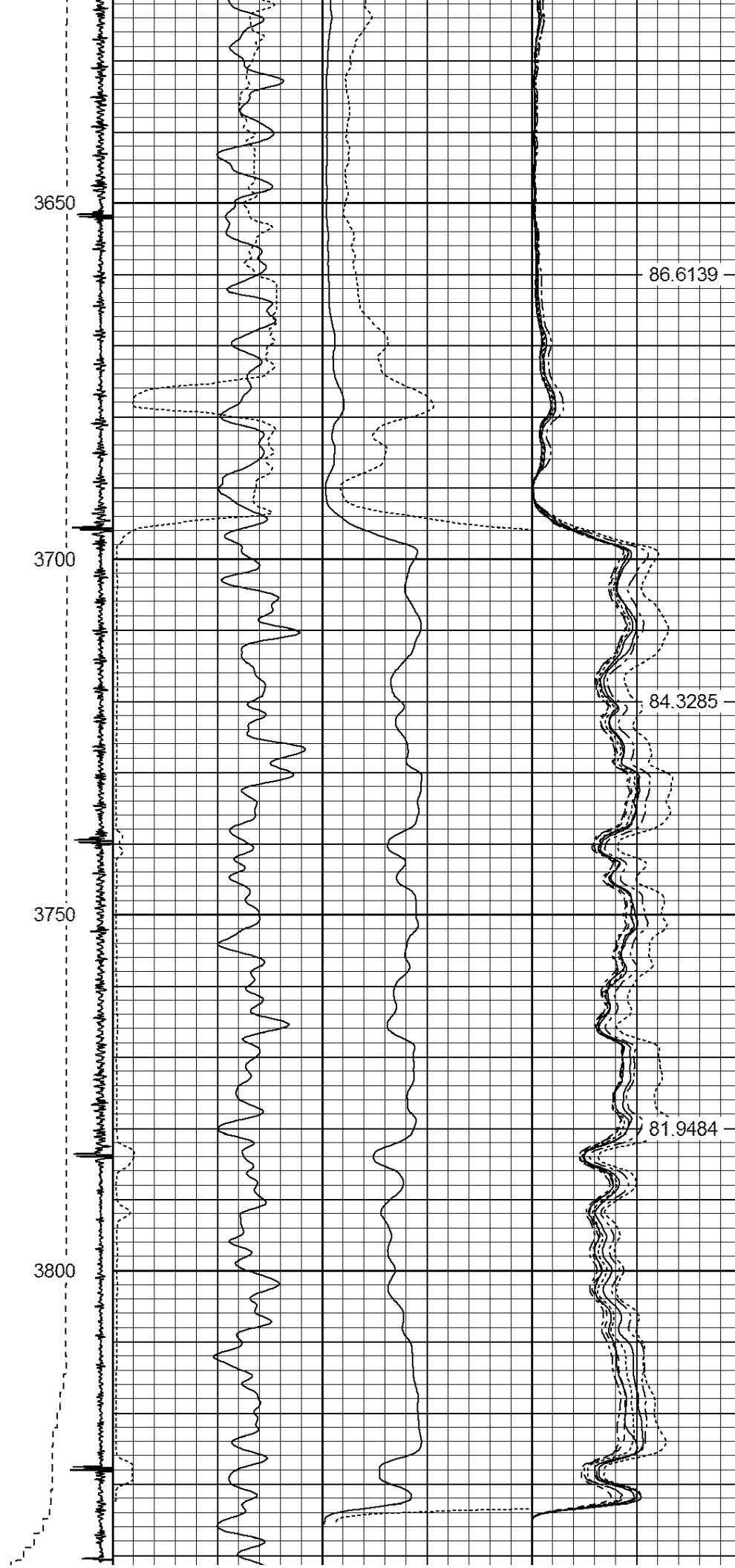
98.9328

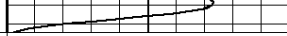


97.5619

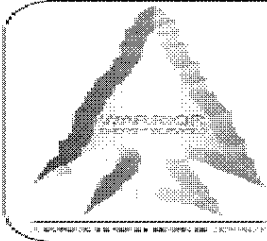
96.1136







-9 CCL		1																				
250		TT (usec)		950		0	AMP (mV)		100	0	AMPS1		100	200	VDL		1200	1	Cement Map	8		
0		GR (GAPI)		200		0	AMPx5 (mV)		20	0	AMPS2		100							1	100	
LSPD												0		AMPS4		100						
(ft/min)				200		GR (GAPI)		400				0		AMPS5		100						
0		250										0		AMPS6		100						
												0		AMPS7		100						
												0		AMPS8		100						
														IntTemp								
														(degF)								



**WARRIOR**  
ENERGY SERVICES

Company Kerr McGee Oil and Gas

Well Bulthaupt 21-6

Field Wattenberg

County WELD

State CO