



DDC
3222 N. 6th Mile Road
Casper, WY 82604

RM-13808

1":100' - MD

10/21/2013 5:02:46 PM

Oper. Company: NOBLE ENERGY
Country: UNITED STATES
State / Province: COLORADO
County / Parish: WELD
Started: 10/17/2013 05:30 AM

API/UWI: 05-123-37527
Field: WATTENBERG
Well: ROHN STATE LD09-65-1HN
Rig: H&P #326
Ended: 10/21/2013 04:28 PM

Personnel

Day Hand: Bob Kubistek
Night Hand: Chris Abbott
Comp. Emp: DDC

Location

Latitude: 40° 45' 51.876 N
Longitude: 103° 51' 41.940 W
Elev. GL: 4,716'
Elev. DF: 30'
Elev. KB: 4,746'

Hole Data

Size	From	To
13 3/4"	0	1299
8 3/4"	1299	6081
6 1/8"	6081	9710

Casing Data

Size	From	To
9 5/8"	0	1299
7"	0	6081
4 1/2"	0	9710

Bit Sizes

Size	From	To
13 3/4"	0	1299
8 3/4"	1299	6081
6 1/8"	6081	9710

Mud Data

Type	Weight	Density	Viscosity	Rm	Rmf	Rmc	From	To
LSND	10.5		35				0	0

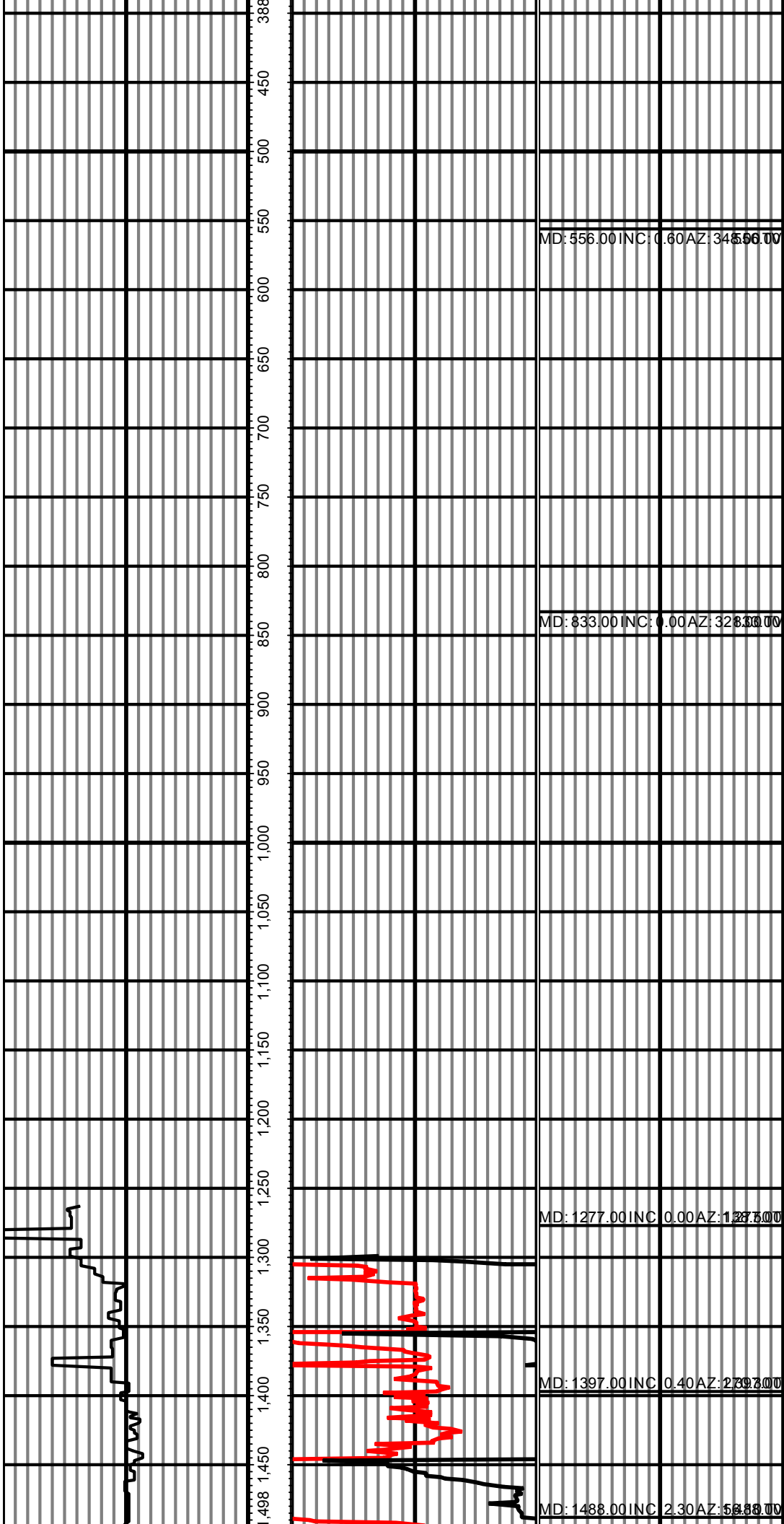
Tool Run Data

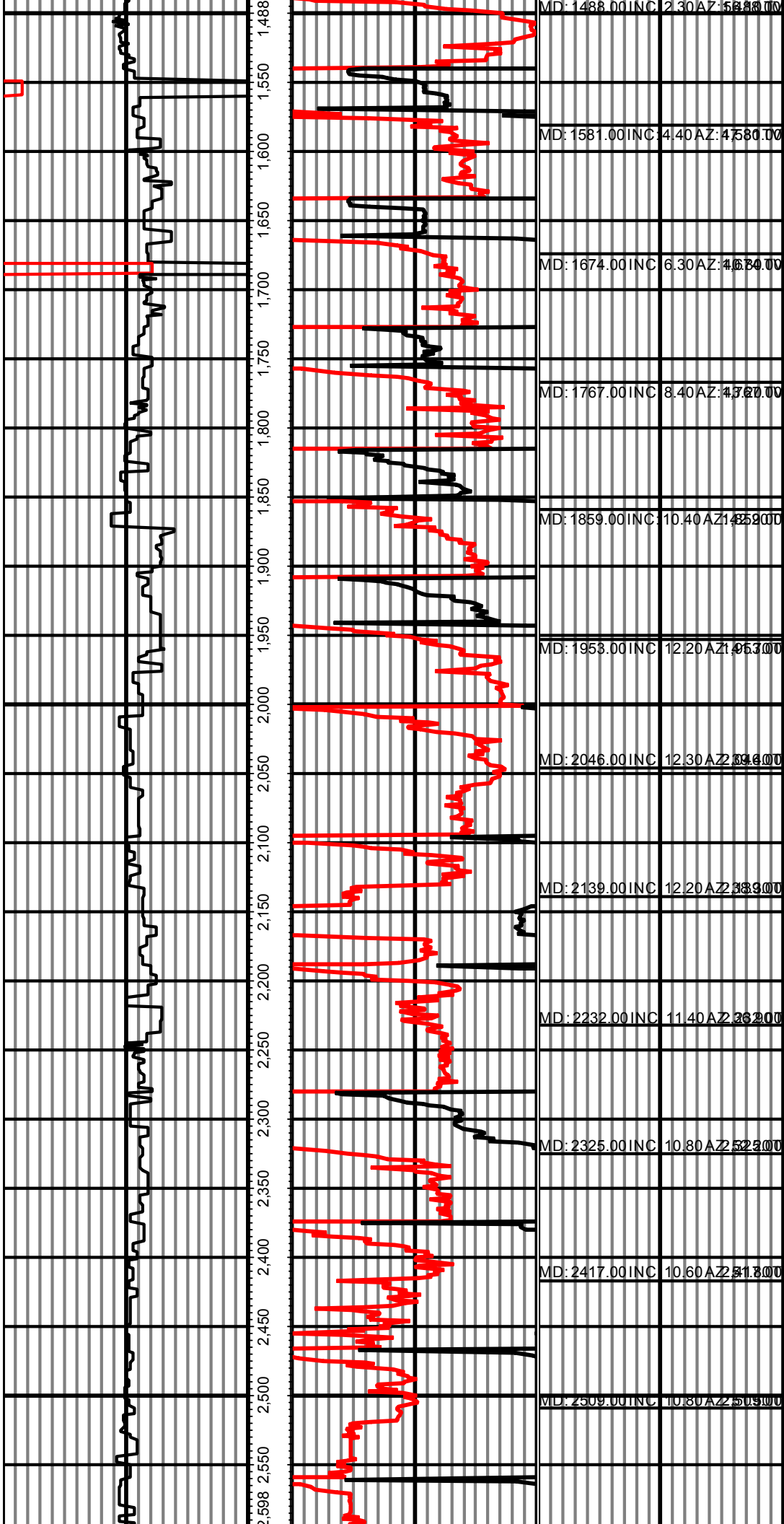
Serial Number	Gamma Offset	Resist. Offset	Start Time	Start Depth	End Time	End Depth
1563	36	0	10/17/2013 4:00:18 AM	1299	10/21/2013 7:32:18 AM	4983
1563	44	0	10/18/2013 1:00:48 AM	4983	10/18/2013 7:00:48 PM	6081
1563	51	0	10/19/2013 5:30:34 PM	6081	10/20/2013 4:30:34 PM	7358
4581	51	0	10/20/2013 4:30:17 PM	7358	10/21/2013 7:57:17 AM	9710

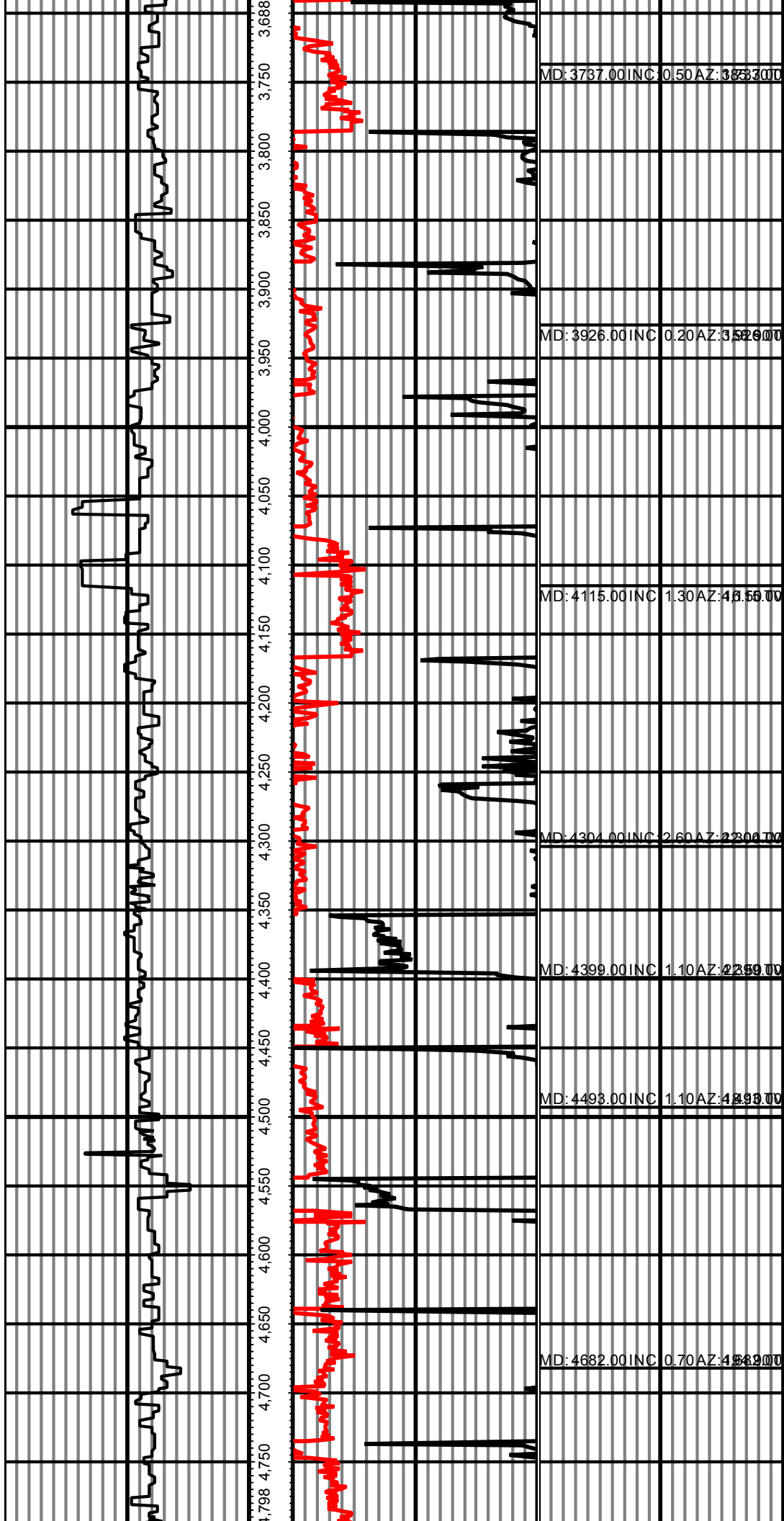
All interpretations are opinions based on inferences from electrical or other measurements and we cannot and do not guarantee the accuracy or correctness of any interpretation, and we shall not except in the case of gross or willful negligence on our part, be liable or responsible for any loss, cost damages or expenses incurred or sustained by anyone resulting from an interpretation made by any of our officers, agents, or employees.

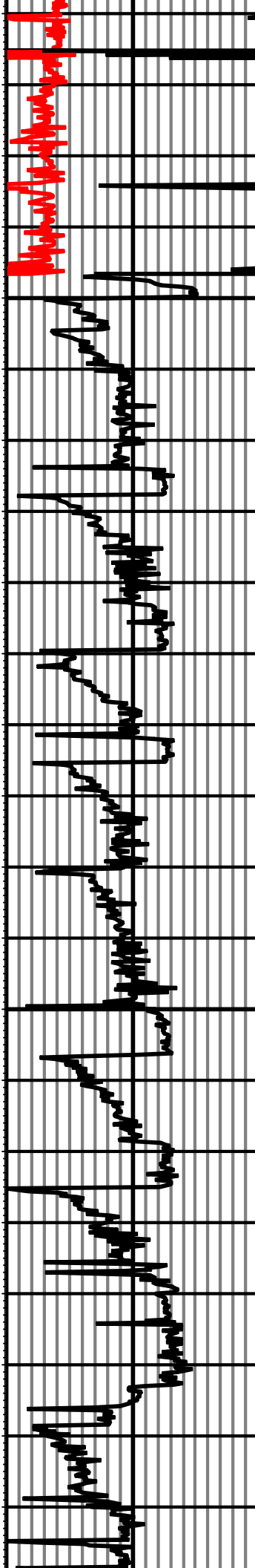
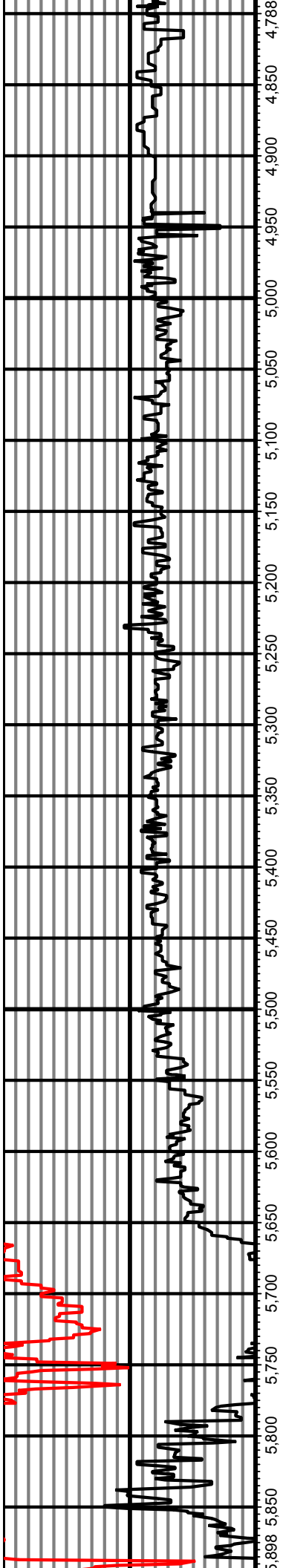
3.00 Counts(mG) 128.00 MD 0.00 ROP(FT/HR) 645.74 Surveys (MD/INC/AZ/TVD/VS)
128.00 2 253.00 FT 645.74 2 1,291.49

279	MD: 279.00 INC: 0.40 AZ: 312.00
300	
350	
400	

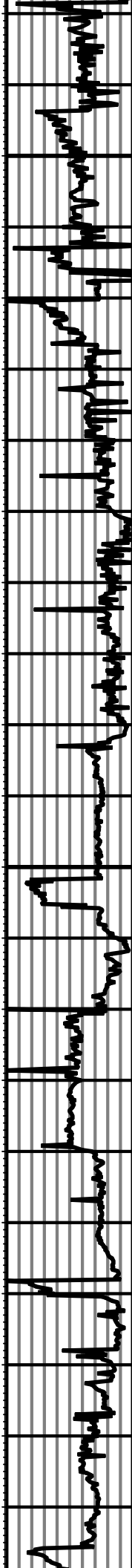
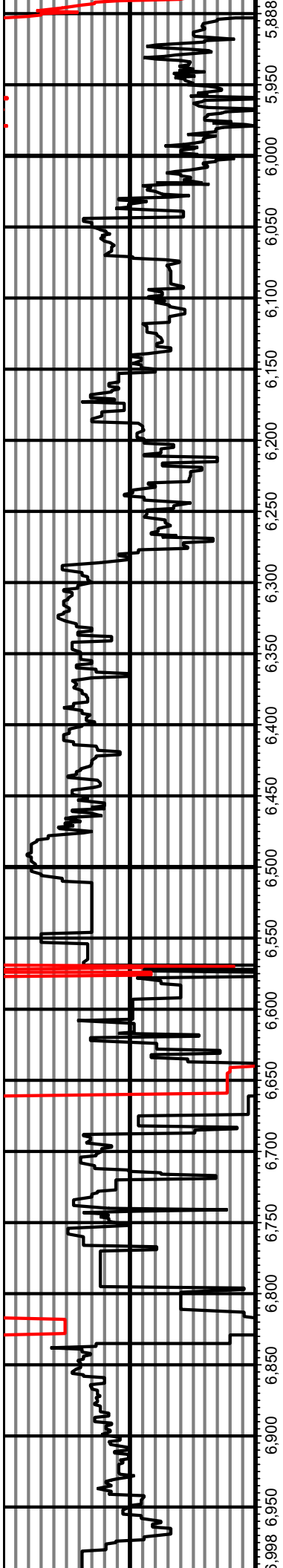








MD: 4871.00 INC	0.90 AZ: 4.587.900
MD: 4943.00 INC	0.90 AZ: 4.673.00
MD: 4966.00 INC	1.10 AZ: 4.966.00
MD: 5060.00 INC	7.30 AZ: 2.660.00
MD: 5155.00 INC	16.60 AZ: 2.455.40
MD: 5249.00 INC	22.30 AZ: 2.449.00
MD: 5344.00 INC	28.20 AZ: 2.448.90
MD: 5438.00 INC	38.70 AZ: 2.438.20
MD: 5533.00 INC	46.30 AZ: 2.533.10
MD: 5627.00 INC	53.80 AZ: 2.527.30
MD: 5722.00 INC	59.40 AZ: 2.722.20
MD: 5817.00 INC	61.50 AZ: 2.817.10



MD: 5911.00 INC 63.80 AZ 274.60

MD: 6006.00 INC 75.80 AZ 269.80

MD: 6024.00 INC 78.40 AZ 269.50

MD: 6098.00 INC 86.30 AZ 268.00

MD: 6159.00 INC 89.00 AZ 279.30

MD: 6252.00 INC 89.30 AZ 272.30

MD: 6347.00 INC 89.00 AZ 270.00

MD: 6441.00 INC 88.60 AZ 269.50

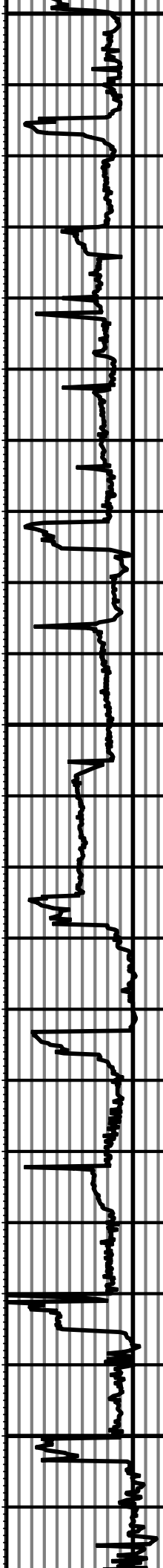
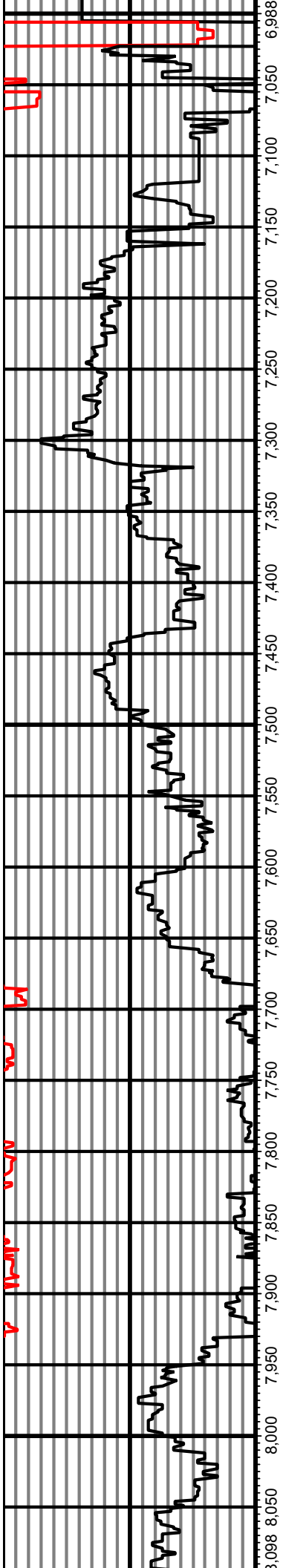
MD: 6536.00 INC 90.70 AZ 268.80

MD: 6630.00 INC 90.60 AZ 268.60

MD: 6725.00 INC 90.20 AZ 265.60

MD: 6819.00 INC 90.60 AZ 279.70

MD: 6914.00 INC 90.50 AZ 269.50



MD: 7009.00 INC 89.60 AZ 2709.00

MD: 7104.00 INC 88.20 AZ 2704.00

MD: 7199.00 INC 88.10 AZ 2709.00

MD: 7272.00 INC 88.10 AZ 2702.00

MD: 7367.00 INC 89.20 AZ 2707.00

MD: 7461.00 INC 90.50 AZ 2700.00

MD: 7556.00 INC 91.00 AZ 2708.00

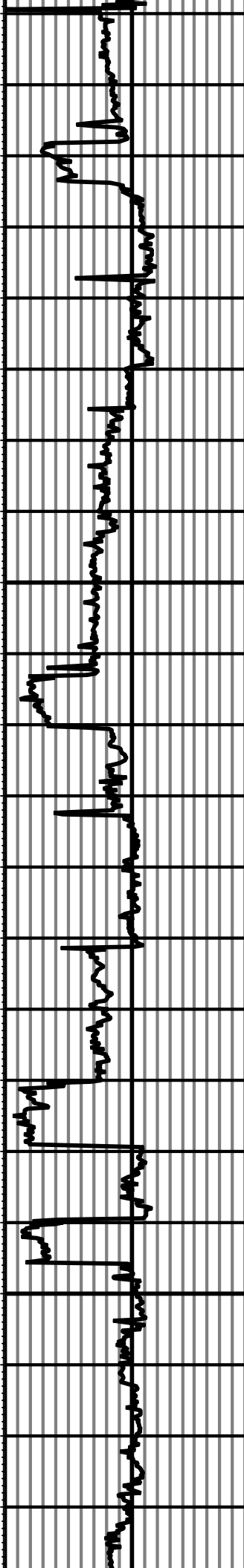
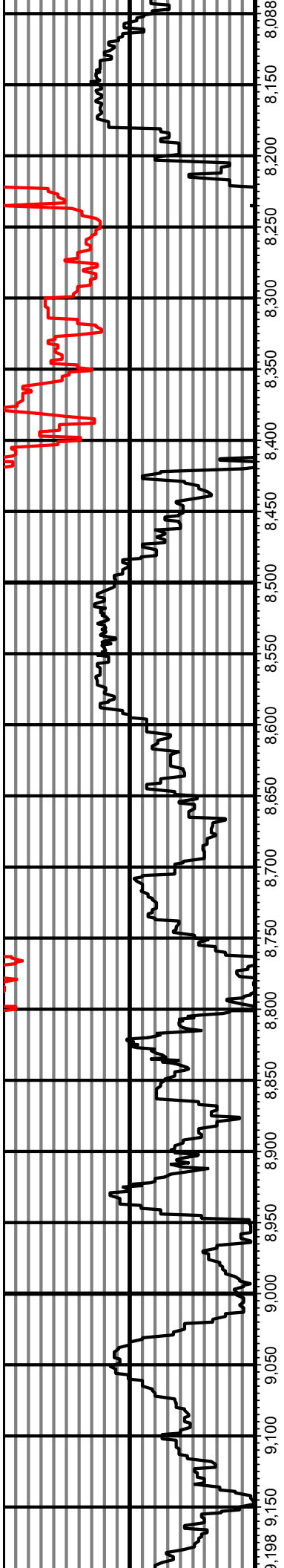
MD: 7651.00 INC 89.90 AZ 2708.10

MD: 7746.00 INC 88.30 AZ 2700.00

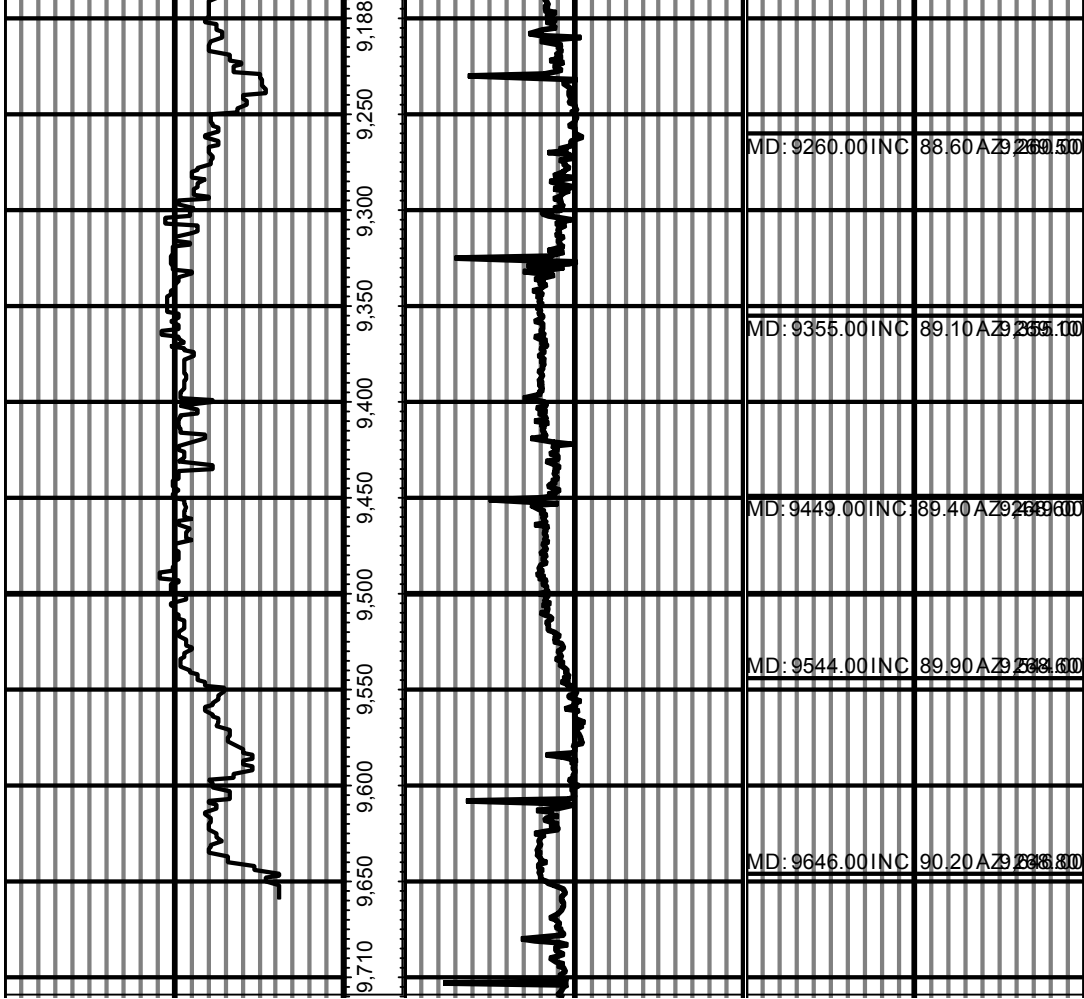
MD: 7841.00 INC 90.00 AZ 2708.20

MD: 7935.00 INC 88.40 AZ 2705.00

MD: 8030.00 INC 88.40 AZ 2705.00



MD: 8125.00 INC	88.30 AZB	265.80
MD: 8219.00 INC	89.30 AZB	268.40
MD: 8314.00 INC	89.00 AZB	267.90
MD: 8409.00 INC	88.60 AZB	267.70
MD: 8504.00 INC	88.50 AZB	267.00
MD: 8598.00 INC	90.80 AZB	268.90
MD: 8693.00 INC	91.30 AZB	268.80
MD: 8787.00 INC	92.00 AZB	267.90
MD: 8882.00 INC	91.90 AZB	268.00
MD: 8976.00 INC	88.80 AZB	276.30
MD: 9071.00 INC	88.30 AZB	269.60
MD: 9166.00 INC	88.50 AZB	266.50



3.00 Counts(mG) 128.00 MD 0.00 ROP(FT/HR) 645.74 Surveys(MD/INC/AZ/TVD/MS)
128.00 2 253.00 FT 645.74 2 1,291.49